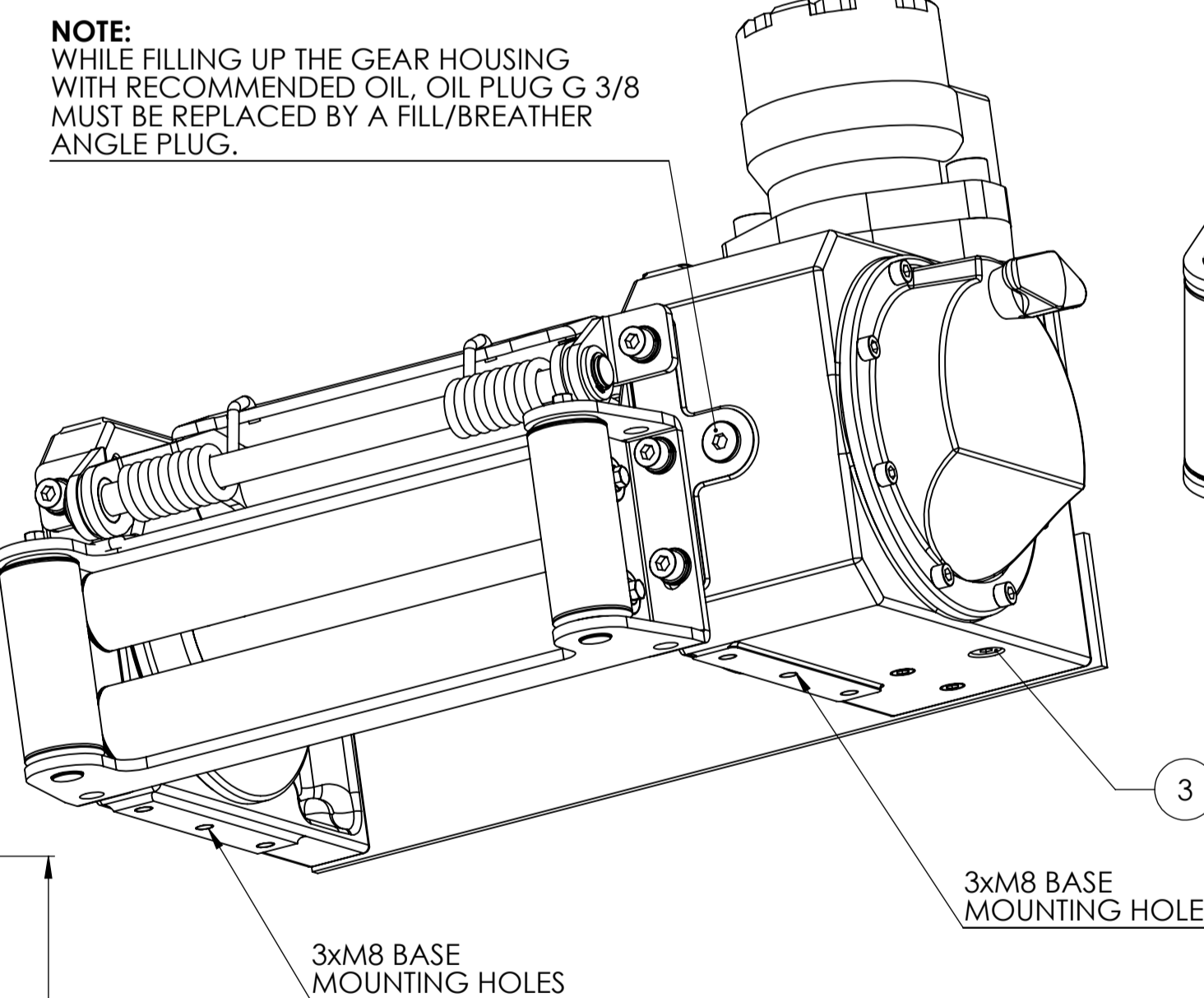
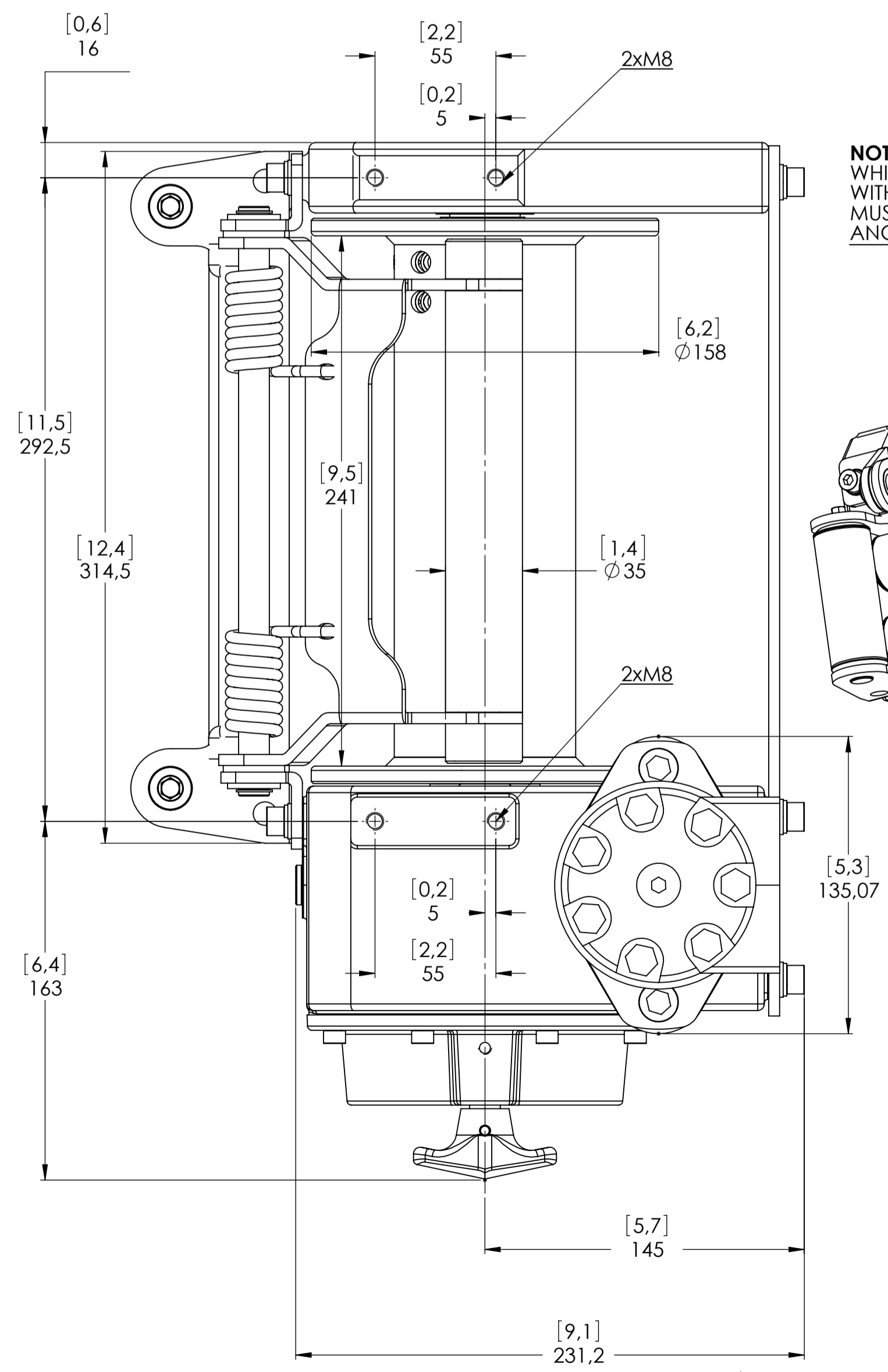
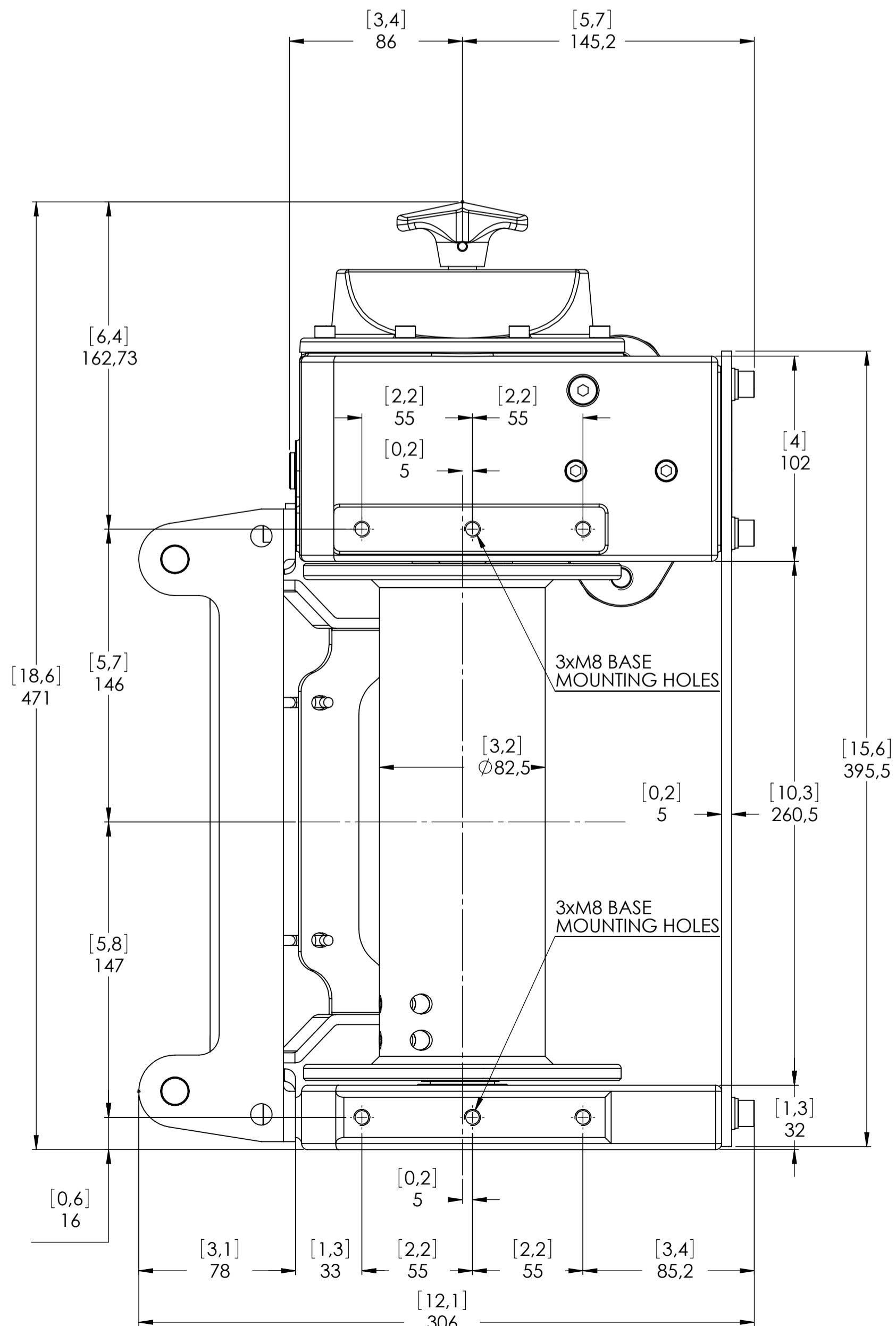
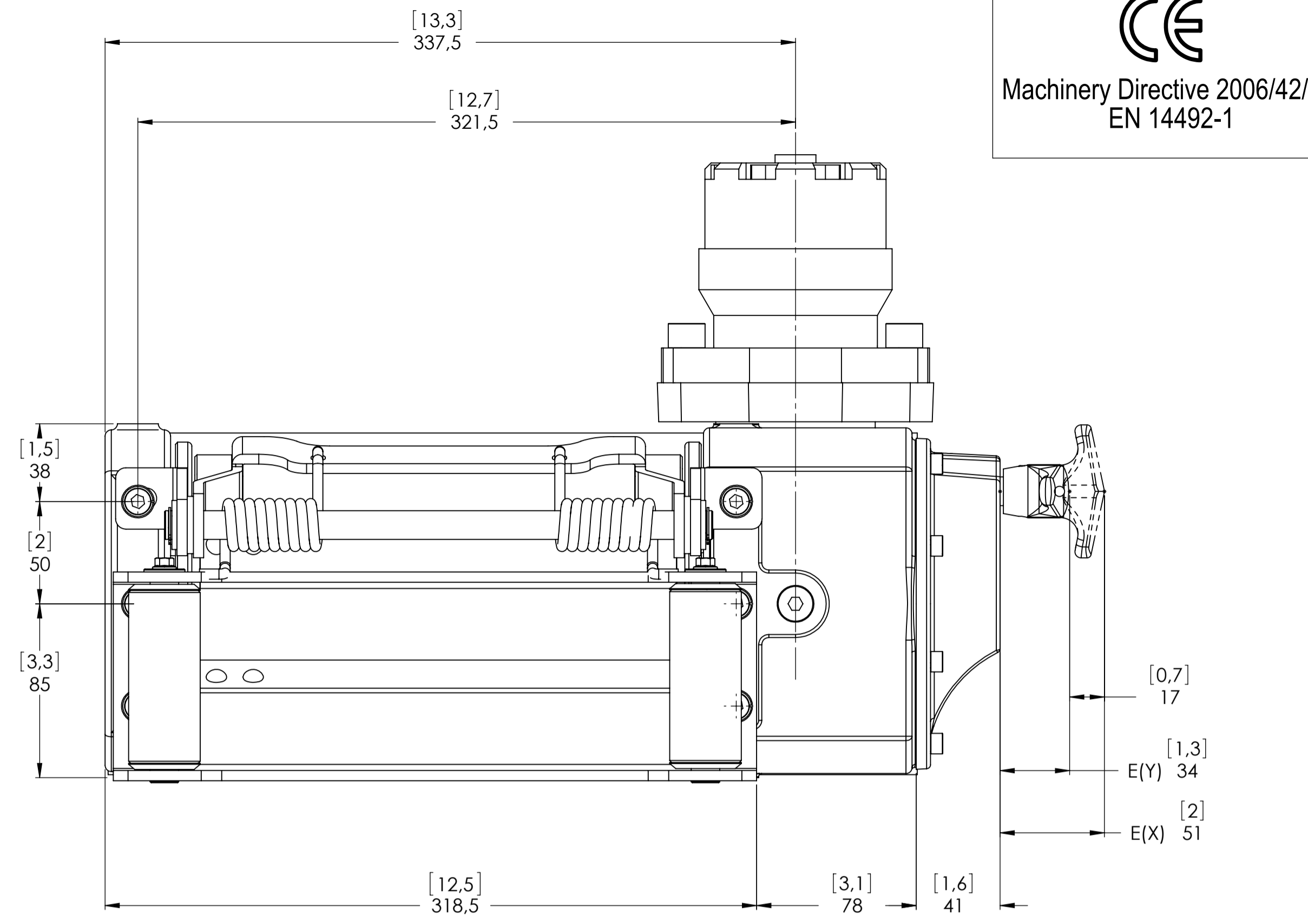
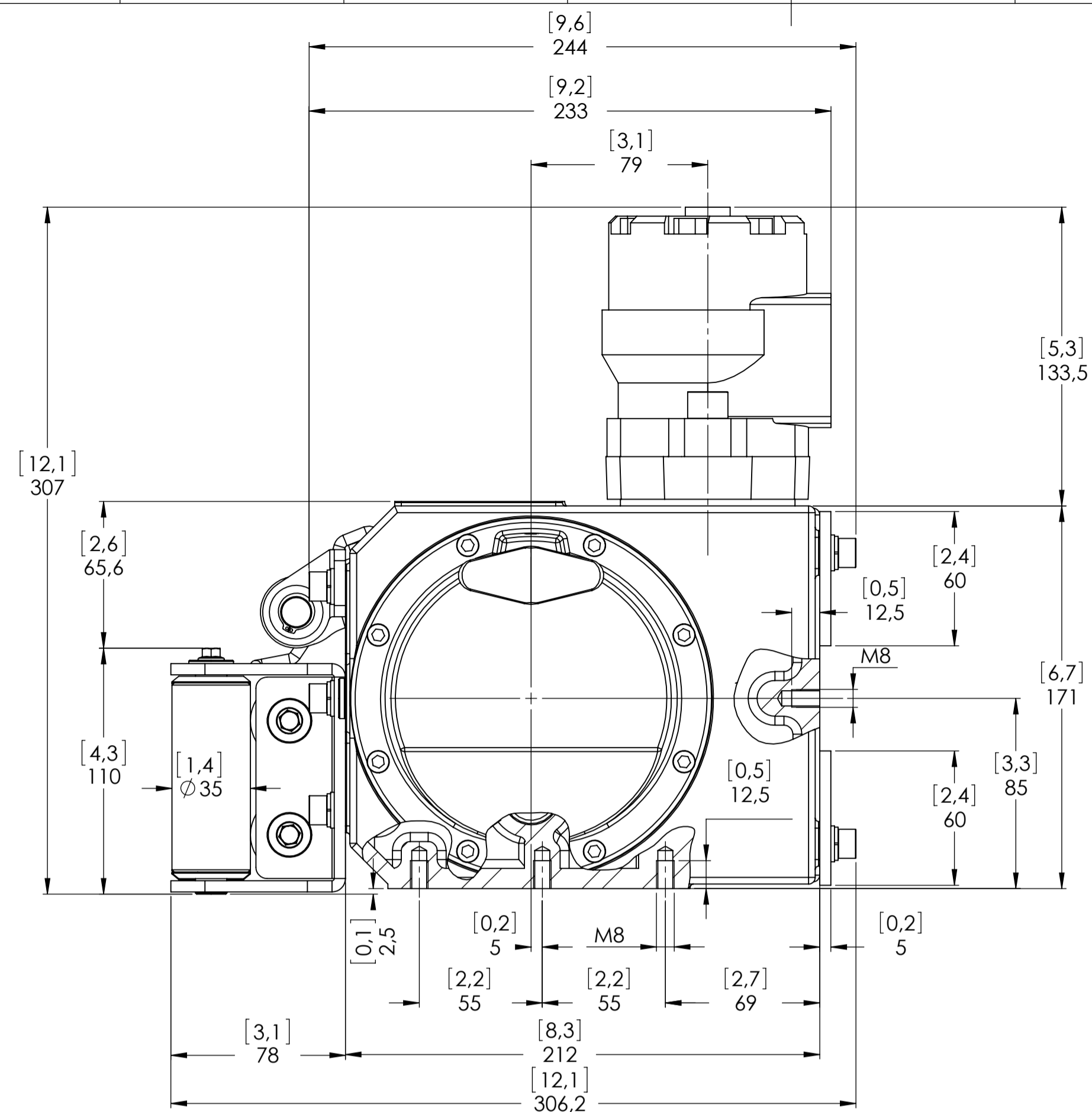
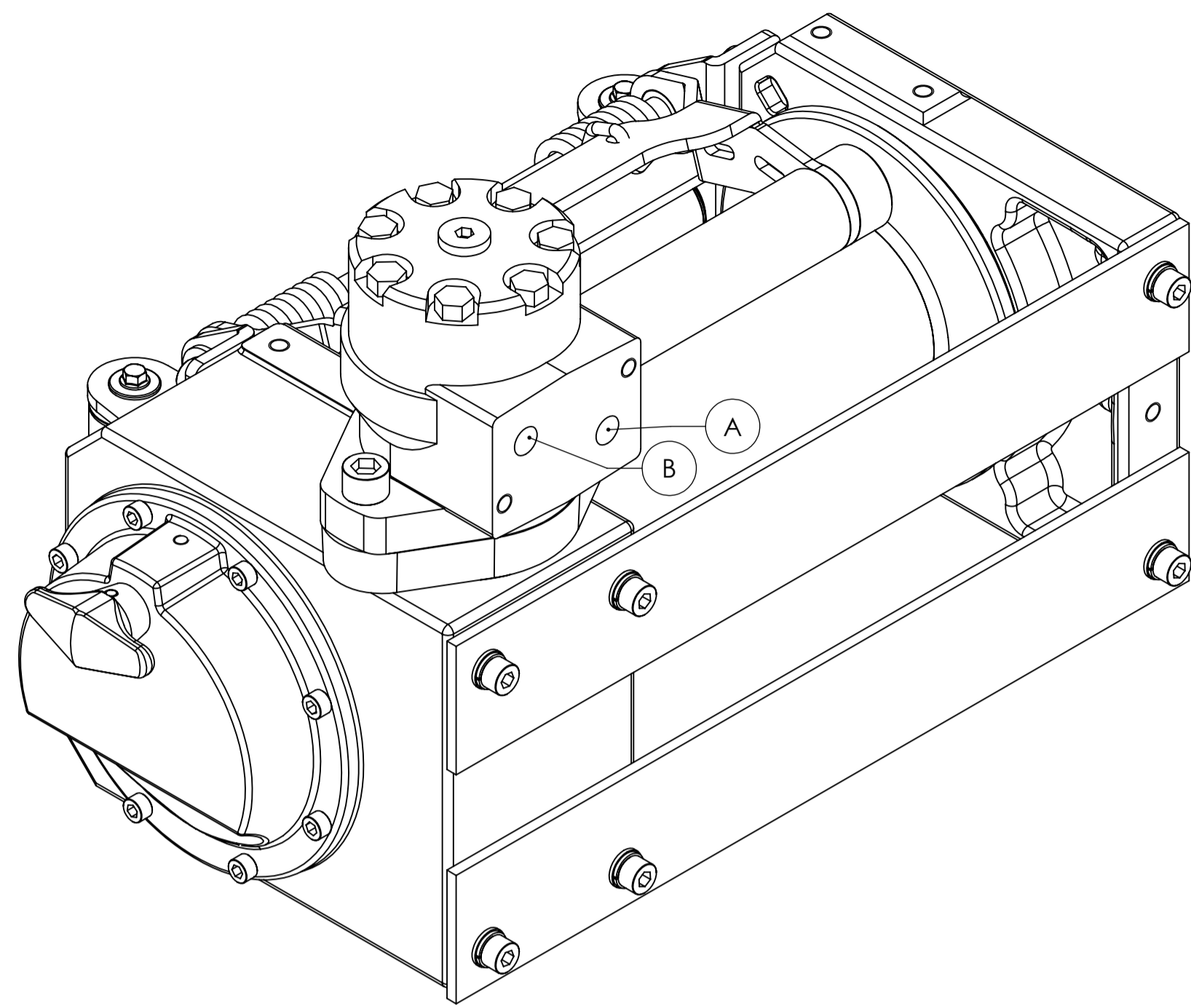


Machinery Directive 2006/42/CE  
EN 14492-1



**NOTE:**  
WHILE FILLING UP THE GEAR HOUSING WITH RECOMMENDED OIL, OIL PLUG G 3/8 MUST BE REPLACED BY A FILL/BREATHER ANGLE PLUG.

WINCH MODEL	ZHL	WINCH GROUP	WORM GEAR
Pulling capacity	2200(3000) Kg	Date	Modification
Max.Oil flow	40 Lt./Min.	<b> DANGEROUS:</b> Do not use winch to lift support or transport personnel.	
Speed Line - first layer	5.5(4,2) Mt./Min.		
Speed Line - top layer	9.4(7,5) Mt./Min.	SCALE 1:2	

Gear ratio	1/38 (1/50)
Orbital hydr. motor	50 cc
Working pressure	130 bar
Drum size	240 mm
Drum clutch	Manual

**The Quality is Transparent** VIME Industrial reserves the right to improve its products through changes in designed or materials as it may seem considerable without notice

DATE 18/11/2015

CONNECTIONS	
A	1/2" G
B	1/2" G
C	-----
E (X) DISENGAGED	-----
E (Y) ENGAGED	-----

PLUGS	
1.Fill	-----
2.Level	-----
3.Drain	1/8" G

WEIGHTS	
Winch (without oil)	29 Kg
Heavy-duty Roller fairlead	4,8 Kg
Rope tensioner	2,2 Kg

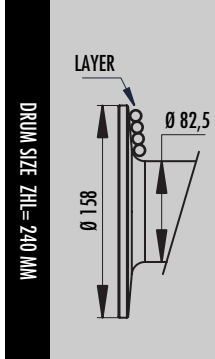
CODE ZHL22K50GRP7  
ZHL30K50GRP7

### 1.4.3 ZHL 2200 WINCH TECHNICAL DATA

RATIO	WIRE ROPE SIZE [MM]	LAYER	LINE PULL [KG]
38:1	8*	1	2.200
		2	1.870
		3	1.625
		4	1.440
		5	1.290

OIL SUPPLY [LT/MIN]	DRUM REVOLUTION [RPM]	LINE SPEED [MT/MIN]				
		1	2	3	4	5
20	8,0	2,3	2,7	3,1	3,5	3,9
30	14,5	4,1	4,8	5,6	6,3	7,0
40	19,3	5,5	6,4	7,4	8,4	9,4


WIRE ROPE MINIMUM BREAKING LOAD EN 14492-1 [KG]	4.400
---	-------




LAYER	DRUM DIAMETER [MM]		WIRE ROPE ON LAYER [MT]		WIRE ROPE QUANTITY [MT]	
	00 MM	8 MM	00 MM	8 MM	00 MM	8 MM
	5	-	154,5	-	14,1	-
4	-	138,5	-	12,6	-	41,7
3	-	122,5	-	11,2	-	29,1
2	-	106,5	-	9,7	-	17,9
1	-	90,5	-	8,2	-	8,2
0	-	82,5	-	-	-	-

WIRE ROPE CAPACITY [MT]		MAX. WIRE ROPE CAPACITY EN 14492-1 [MT]		MAX. WIRE ROPE CAPACITY [MT]	
00 MM	8 MM	00 MM	8 MM	00 MM	8 MM
-	25	-	29**	-	55

DESCRIPTION	WEIGHTS
	[KGS.]
WINCH (WITHOUT CABLE)	29
ACCESSORY : ROLLERFAILREAD	3,5
ACCESSORY : CABLE TENSIONER	2,2

**NOTE** 

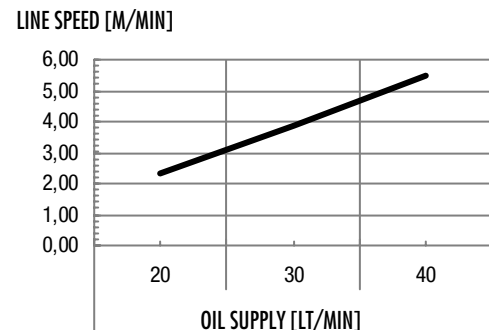
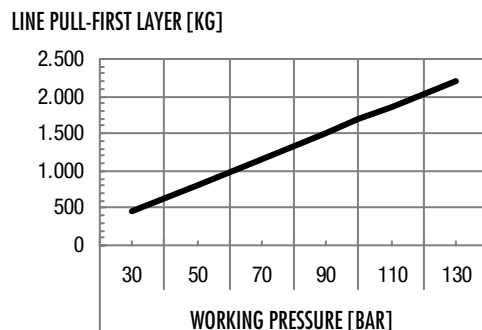
Specifications are subject to change without notification and without incurring obligation. Specifications in this publication are theoretical and may vary depending on hydraulic system, environment, etc.

**NOTE** 

\*Wire rope size must be respected. Recommended wire rope min. tensile strength 2160 N/mm<sup>2</sup>.  
Wire rope minimum breaking load must be at least double of winch max. pulling capacity.

\*\* Max. wire rope capacity according with EN 14492-1.

### 1.4.4 ZHL 2200 WINCH PERFORMANCE CHARTS AT THE 1<sup>ST</sup> LAYER

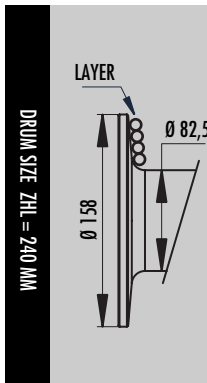


## 1.4.7 ZHL 3000 WINCH TECHNICAL DATA

RATIO	WIRE ROPE SIZE [MM]	LAYER	LINE PULL [KG]
50:1	9*	1	3.000
		2	2.510
		3	2.155
		4	1.890
		5	1.680

OIL SUPPLY [LT/MIN]	DRUM REVOLUTION [RPM]	LINE SPEED [MT/MIN]				
		1	2	3	4	5
20	6,1	1,8	2,1	2,4	2,8	3,1
30	10,9	3,2	3,8	4,4	5,0	5,6
40	14,7	4,2	5,0	5,9	6,7	7,5


WIRE ROPE MINIMUM BREAKING LOAD EN 14492-1 [KG]	6.000
---	-------




LAYER	DRUM DIAMETER [MM]		WIRE ROPE ON LAYER [MT]		WIRE ROPE QUANTITY [MT]	
	00 MM	9 MM	00 MM	9 MM	00 MM	9 MM
	5	-	163,5	-	13,2	-
4	-	145,5	-	11,7	-	38,2
3	-	127,5	-	10,3	-	26,5
2	-	109,5	-	8,8	-	16,2
1	-	91,5	-	7,4	-	7,4
0	-	82,5	-	-	-	-

WIRE ROPE CAPACITY [MT]		MAX. WIRE ROPE CAPACITY EN 14492-1 [MT]		MAX. WIRE ROPE CAPACITY [MT]	
00 MM	9 MM	00 MM	9 MM	00 MM	9 MM
-	25	-	26**	-	38

DESCRIPTION	WEIGHTS
	[KGS.]
WINCH (WITHOUT CABLE)	29
ACCESSORY : ROLLERFAILREAD	3,5
ACCESSORY : CABLE TENSIONER	2,2

**NOTE** 

Specifications are subject to change without notification and without incurring obligation. Specifications in this publication are theoretical and may vary depending on hydraulic system, environment, etc.

**NOTE** 

\*Wire rope size must be respected. Recommended wire rope min. tensile strength 2160 N/mm<sup>2</sup>.  
Wire rope minimum breaking load must be at least double of winch max. pulling capacity.

\*\* Max. wire rope capacity according with EN 14492-1.

## 1.4.8 ZHL 3000 WINCH PERFORMANCE CHARTS AT THE 1<sup>ST</sup> LAYER

