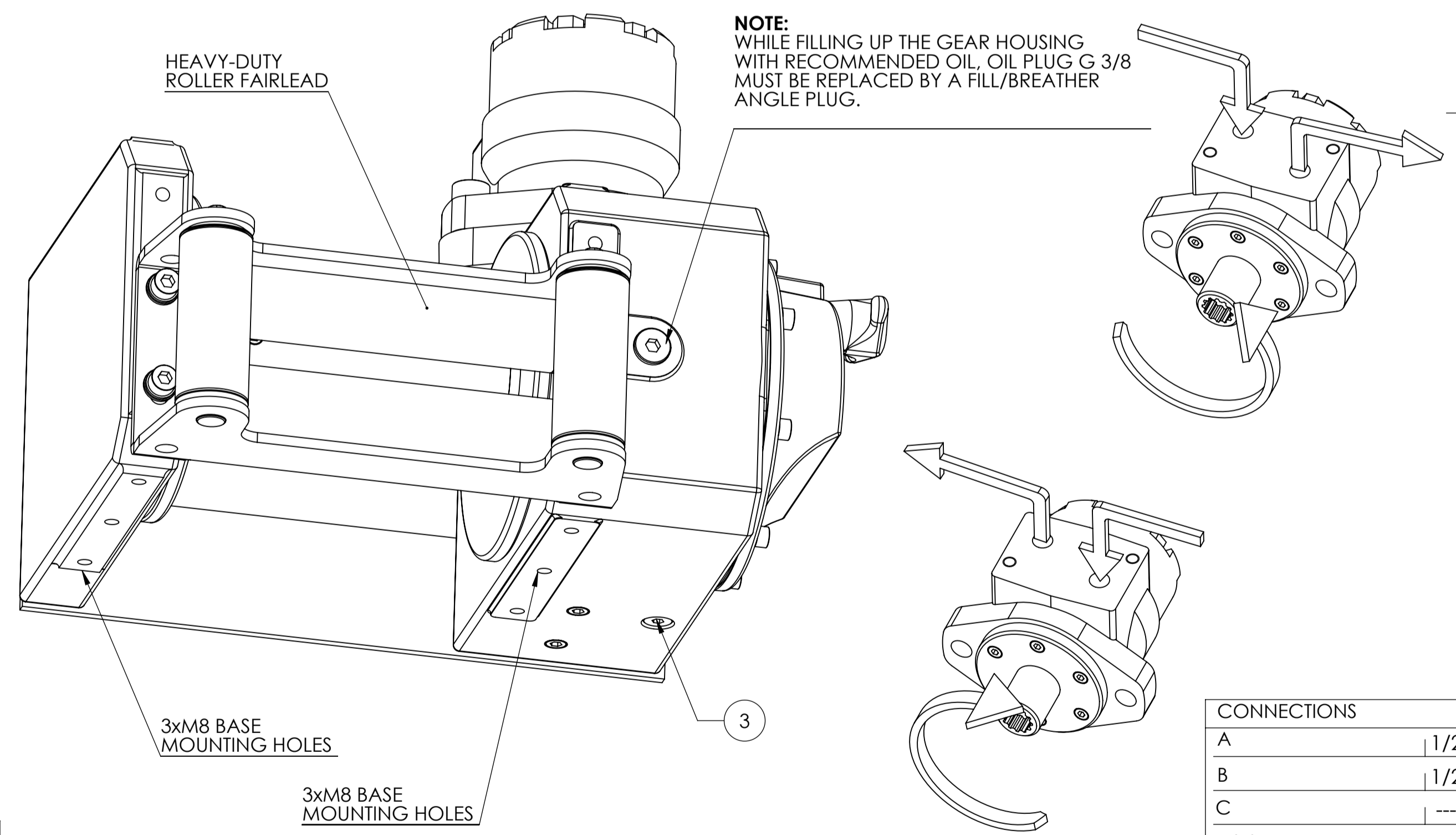
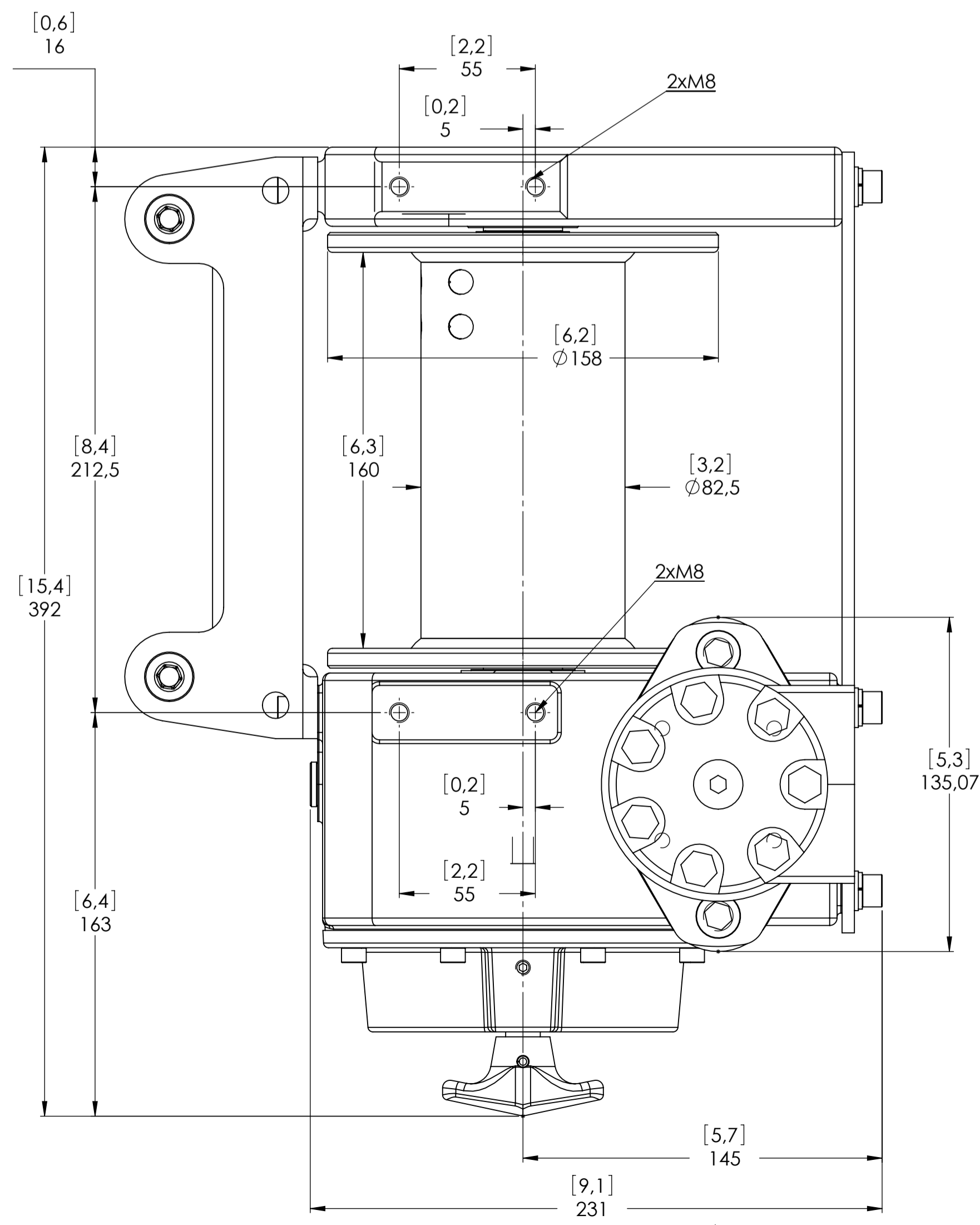
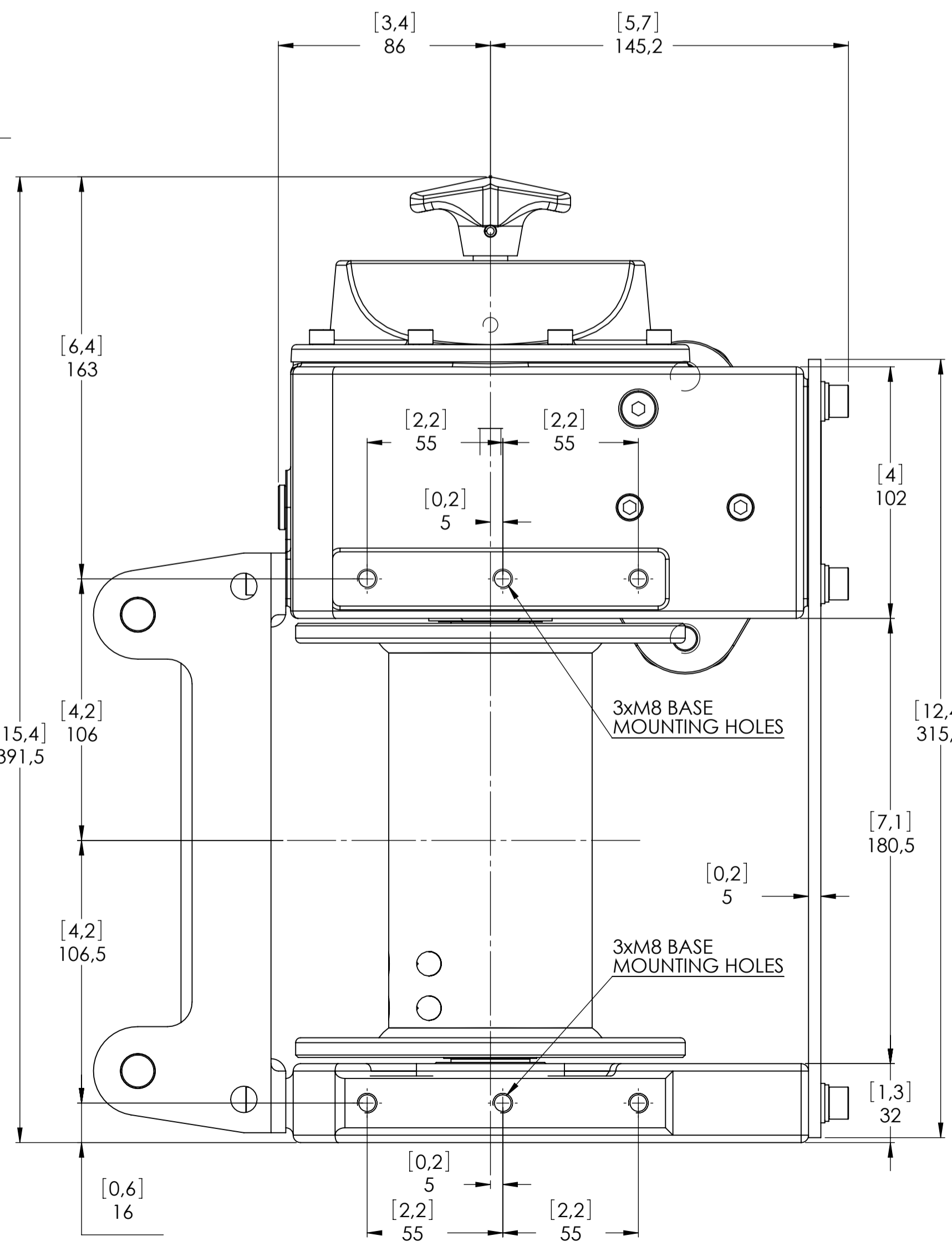
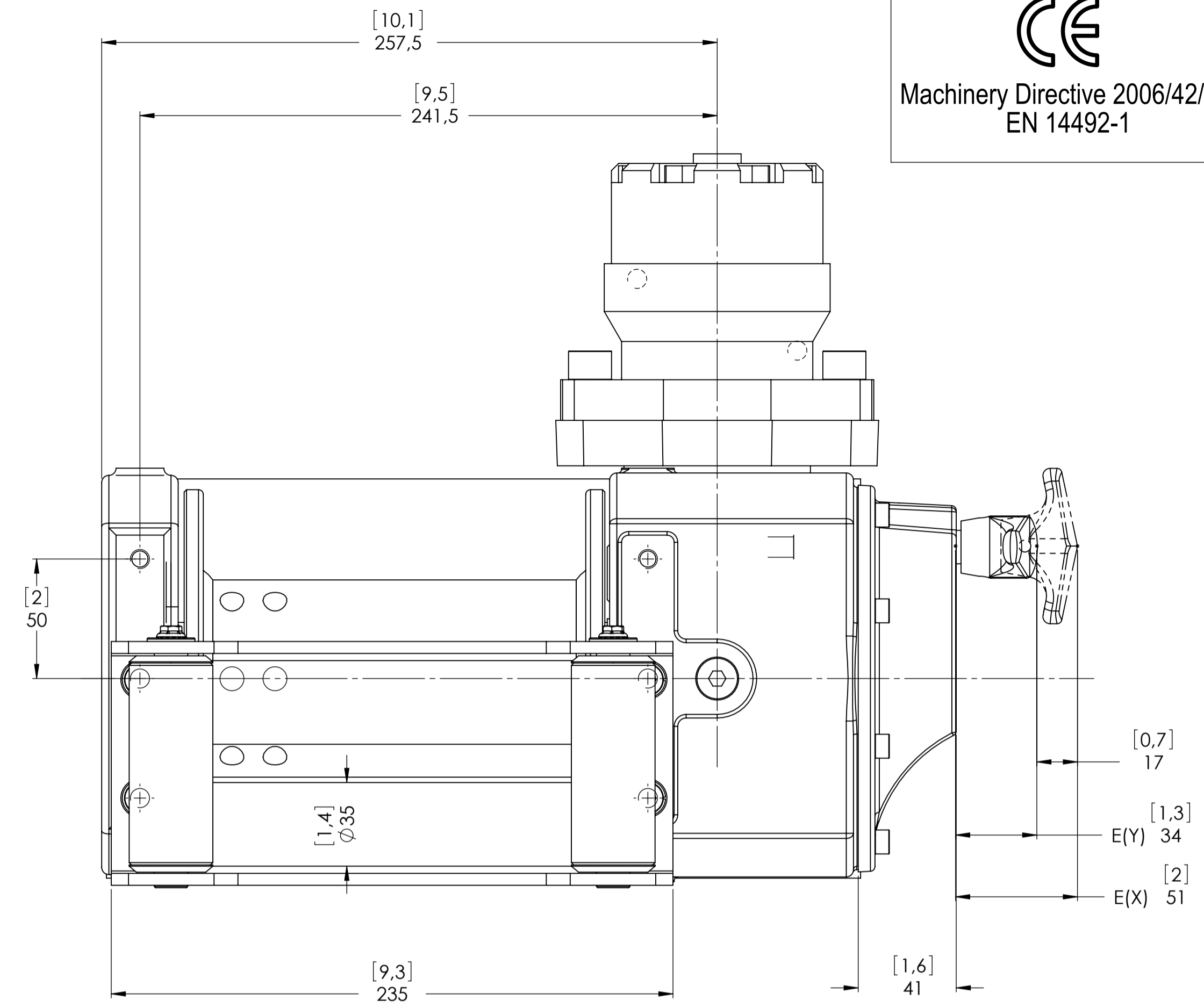
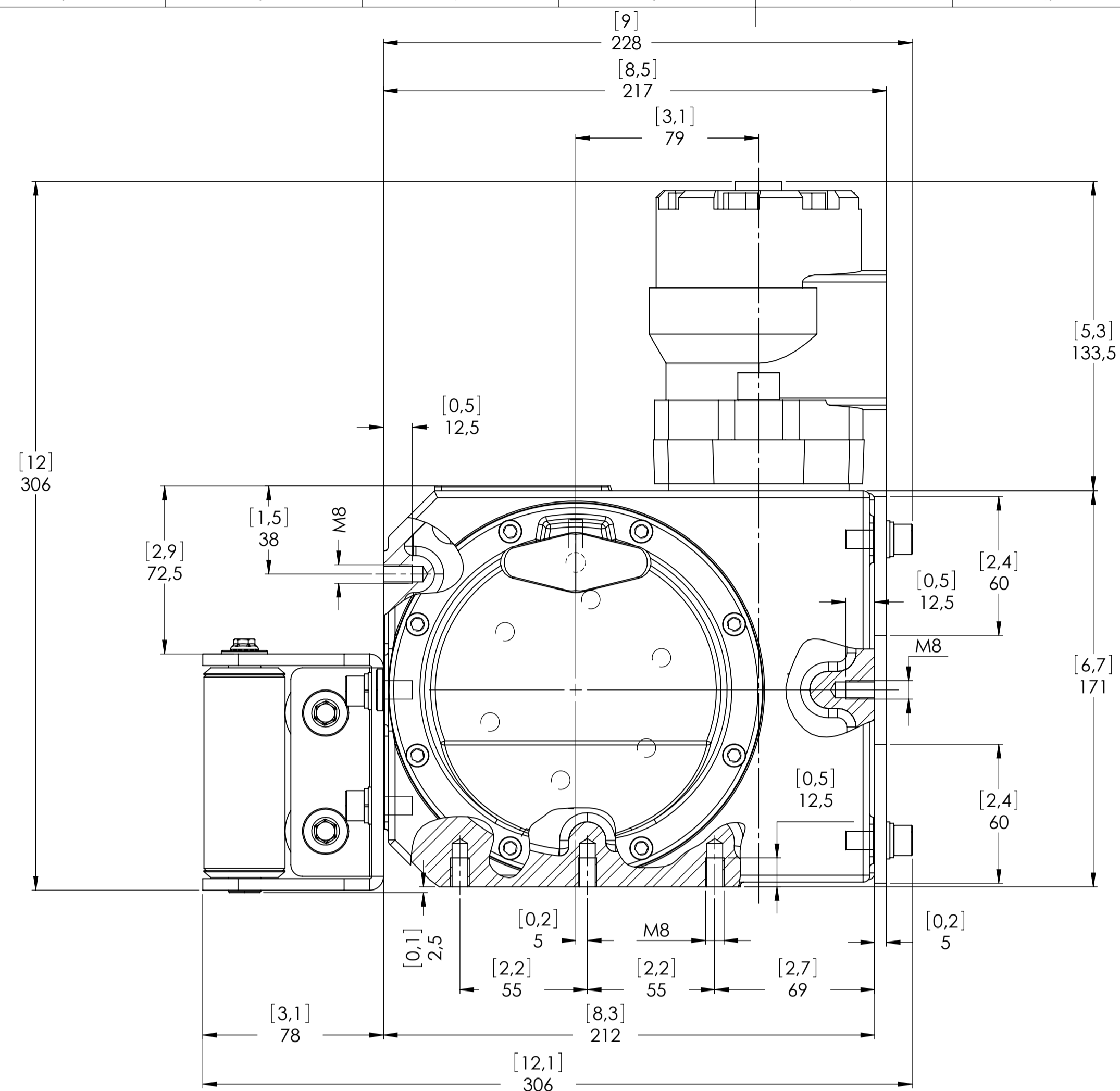
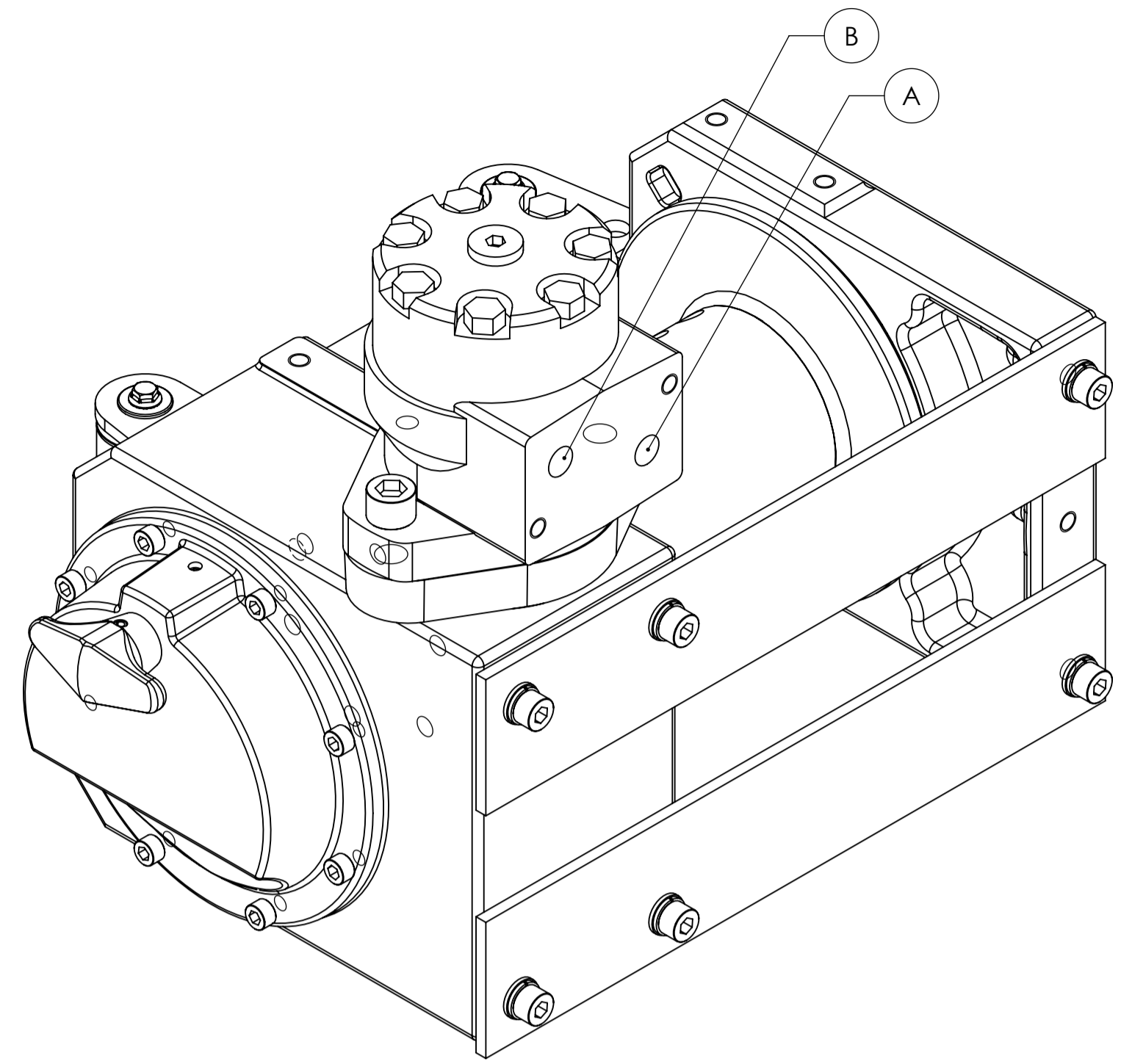


Machinery Directive 2006/42/CE  
EN 14492-1



CONNECTIONS	
A	1/2" G
B	1/2" G
C	-----
E (X) DISENGAGED	-----
E (Y) ENGAGED	-----

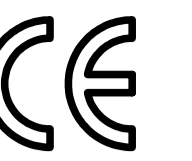
WINCH MODEL	ZHC	WINCH GROUP	WORM GEAR	PLUGS
Pulling capacity	2200(3000) Kg	Date	Modification	1.Fill -----
Max.Oil flow	40 Lt./Min.			2.Level -----
Speed Line - first layer	5.5(4.2) Mt./Min.			3.Drain 1/8" G
Speed Line - top layer	9.4(7.5) Mt./Min.	<b>DANGEROUS:</b> Do not use winch to lift support or transport personnel.		
				SCALE 1:1.7
				WEIGHTS
				Winch (without oil) 23 Kg
				Standard
				Roller fairlead 3.9 Kg
				Rope tensioner -----
				CODE ZHC22K50GR7 ZHC30K50GR7
				DATE 30/10/2013



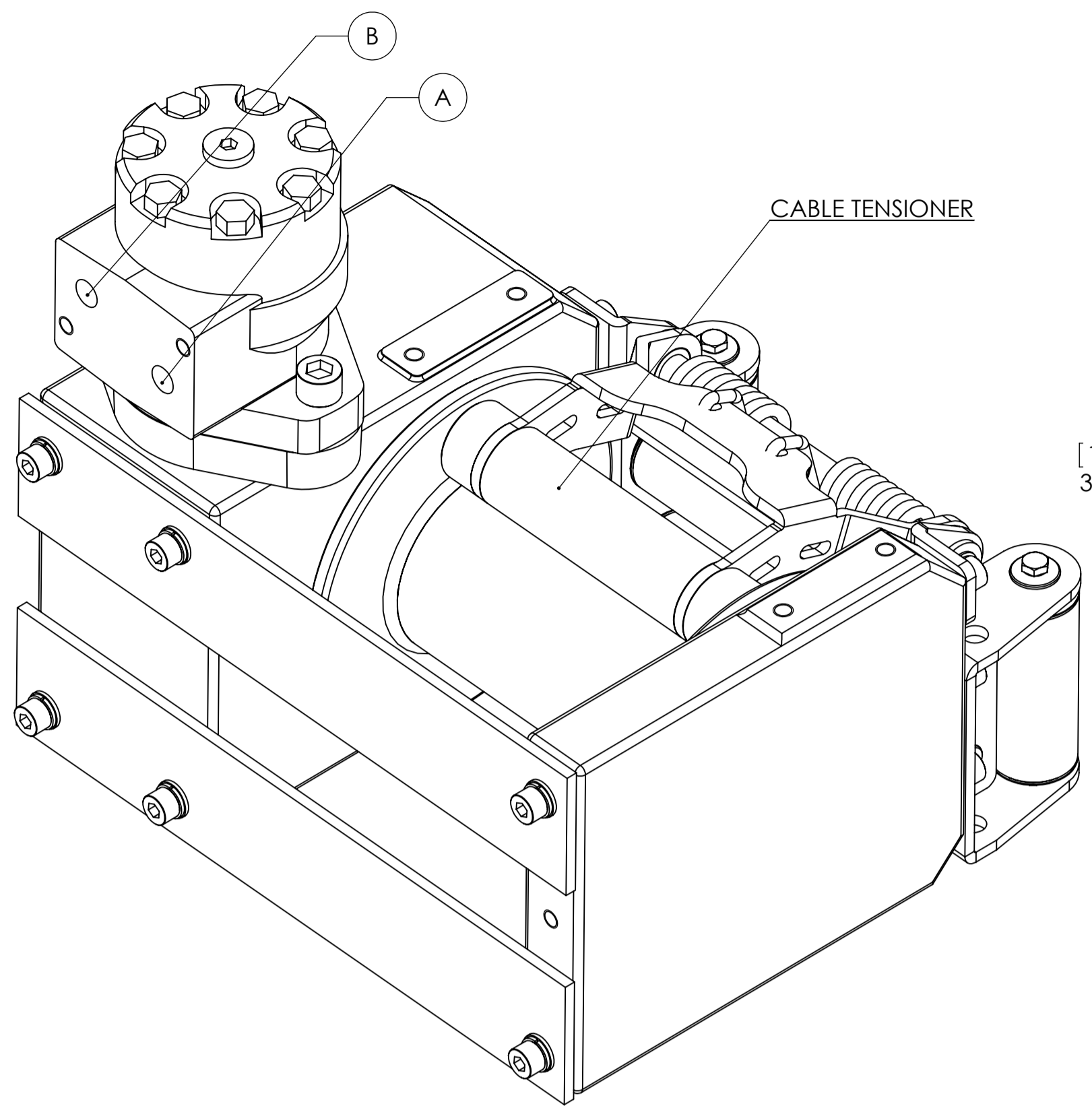
Funo - Bologna (Italy)  
www.vimeindustrial.com

The Quality is Transparent

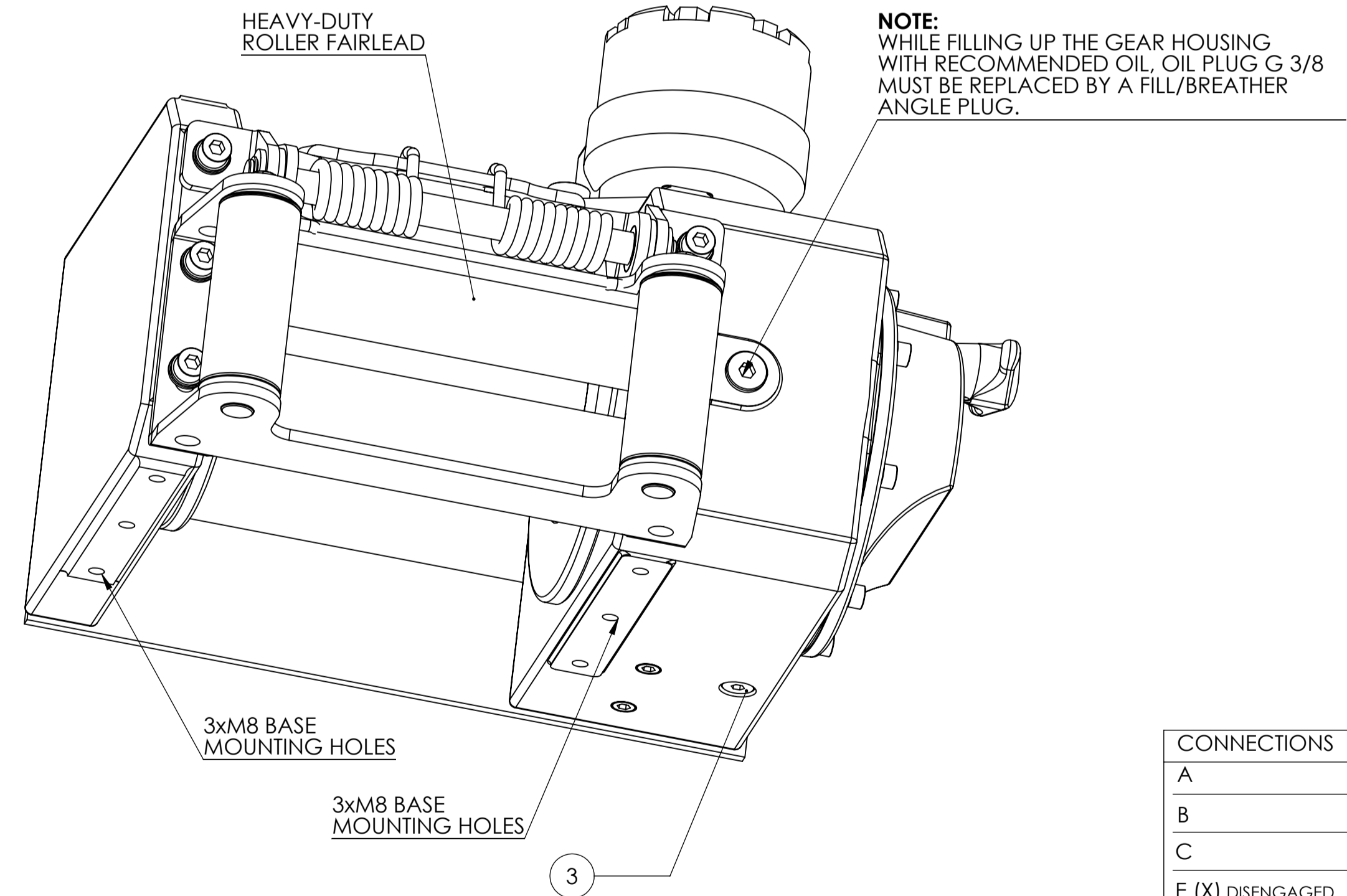
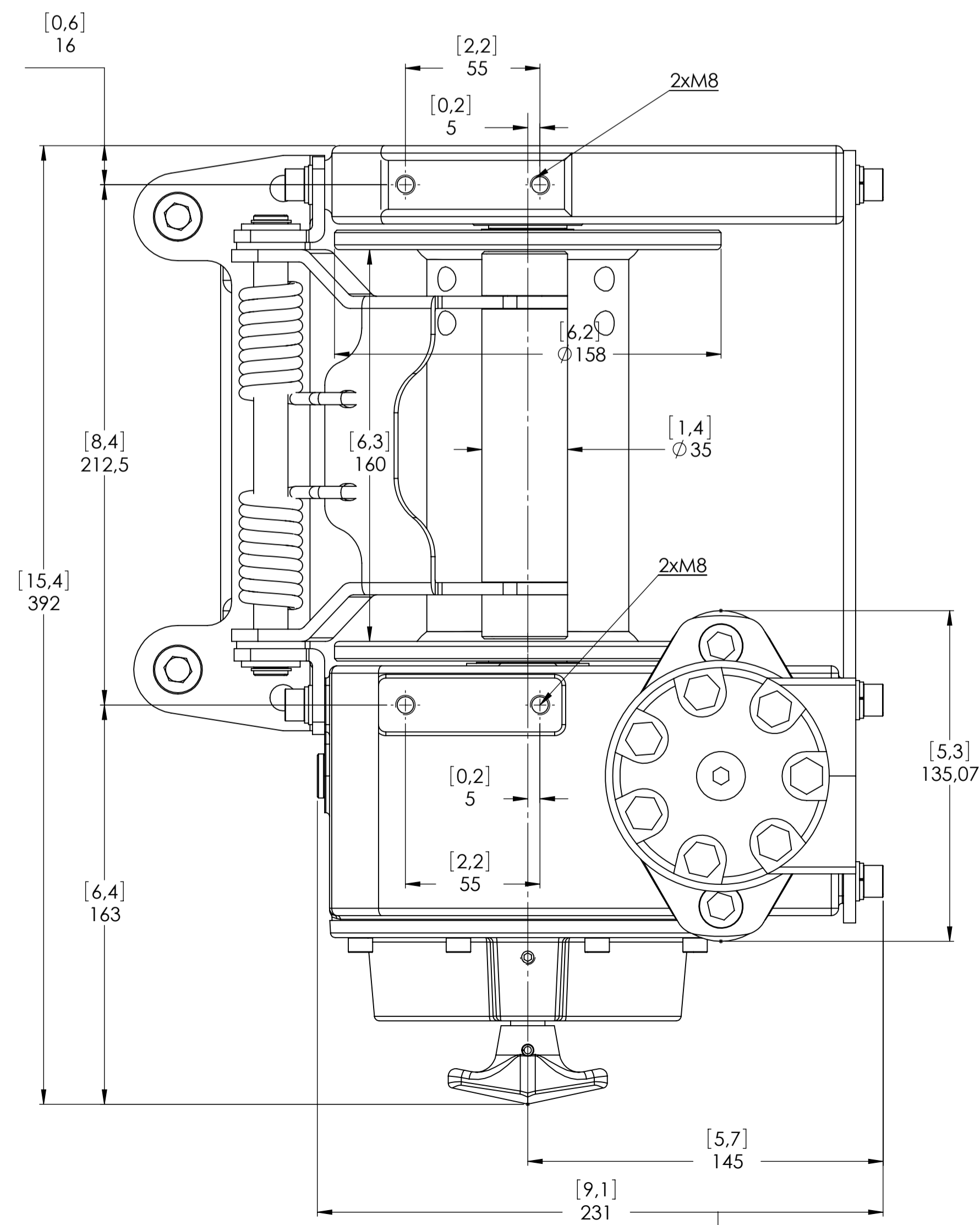
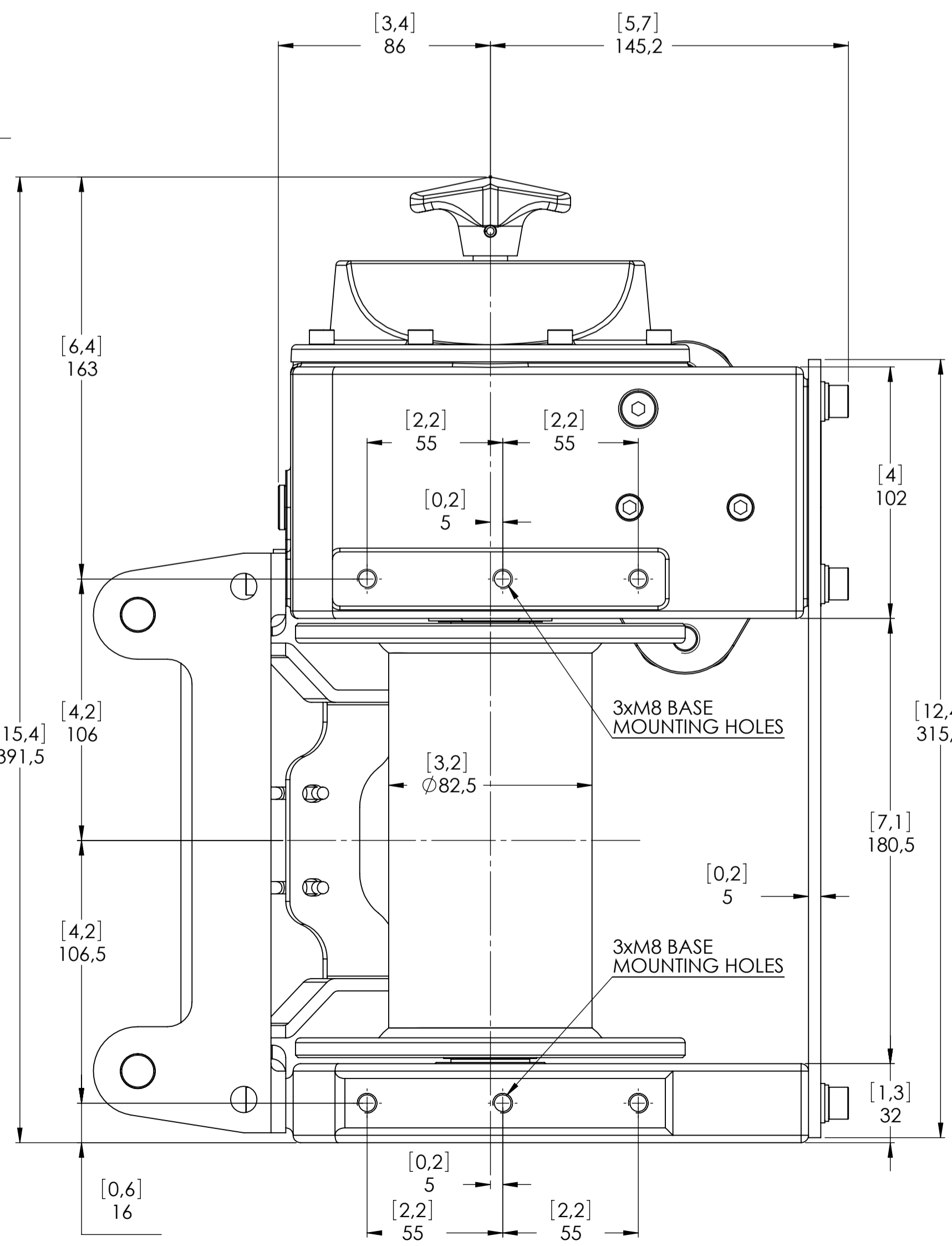
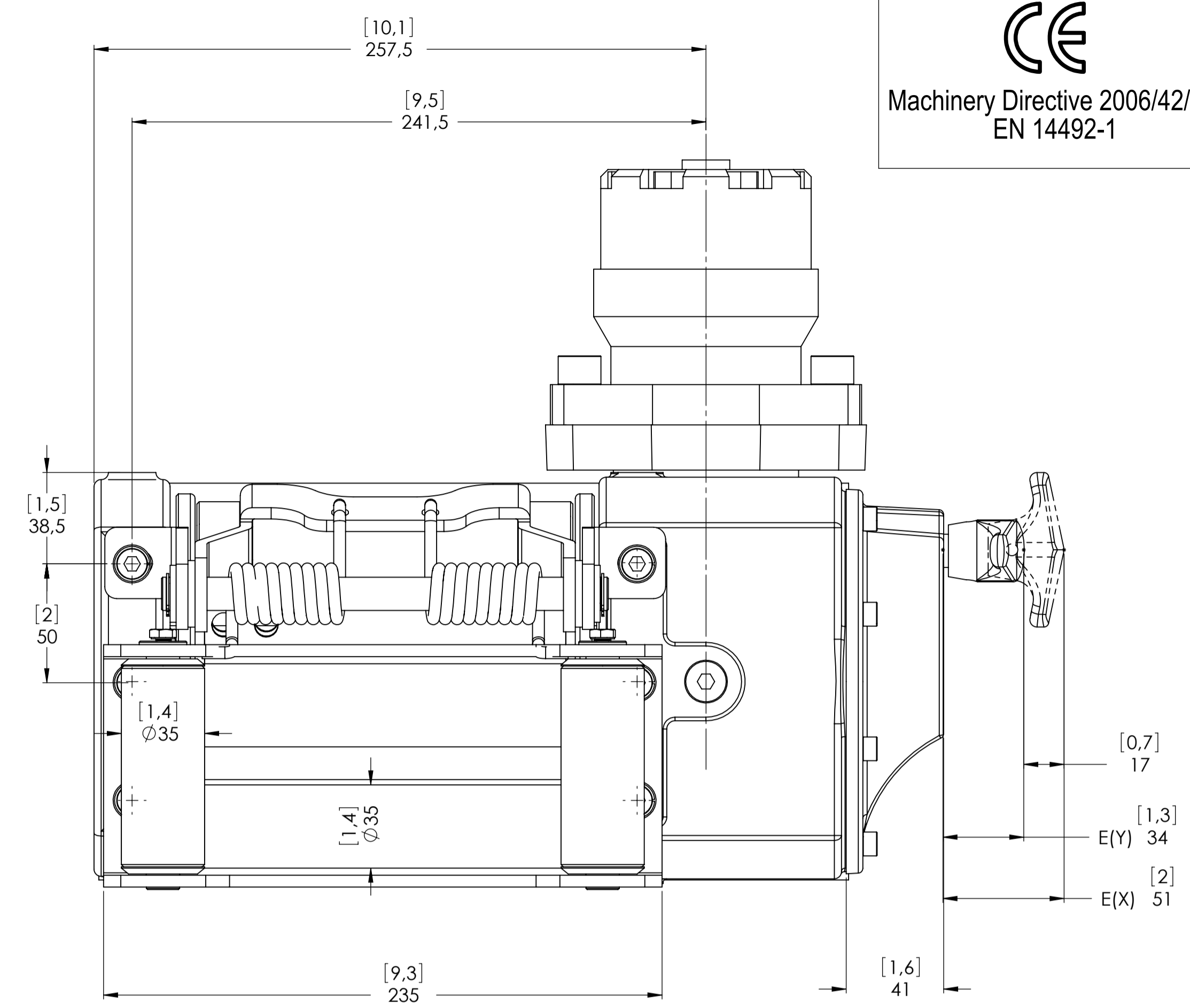
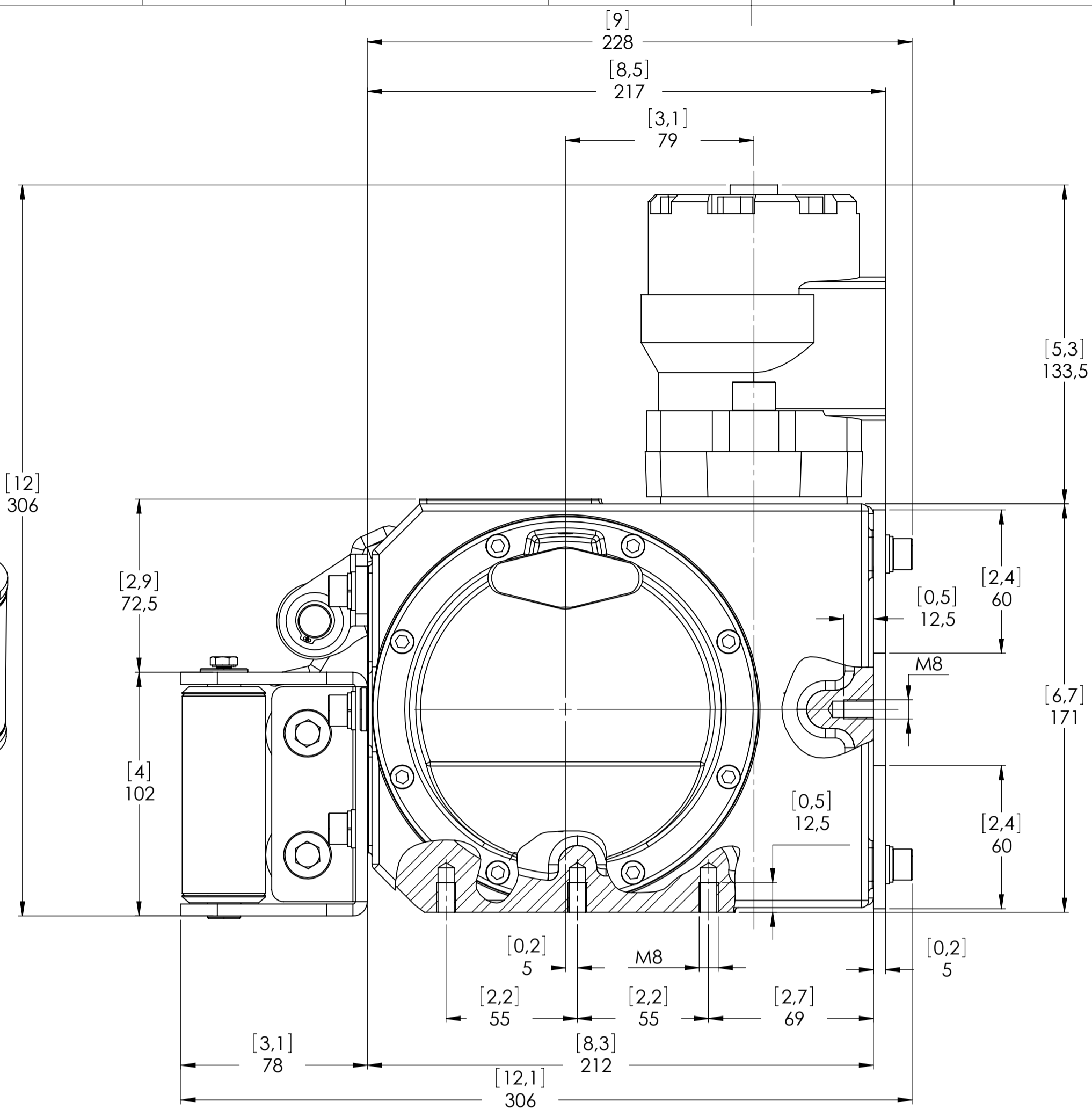
Gear ratio 1/38 (1/50)  
Orbital hydr. motor 50 cc  
Working pressure 130 bar  
Drum size 160 mm  
Drum clutch Manual  
VIME Industrial reserves the right to improve its products through changes in designed or materials as it may seem considerable without notice



Machinery Directive 2006/42/CE  
EN 14492-1



CABLE TENSIONER



**NOTE:**  
WHILE FILLING UP THE GEAR HOUSING WITH RECOMMENDED OIL, OIL PLUG G 3/8 MUST BE REPLACED BY A FILL/BREATHER ANGLE PLUG.

CONNECTIONS	
A	1/2" G
B	1/2" G
C	-----
E (X) DISENGAGED	-----
E (Y) ENGAGED	-----

WINCH MODEL	ZHC	WINCH GROUP	WORM GEAR
Pulling capacity	2200(3000) Kg	Date	Modification
Max.Oil flow	40 Lt./Min.		
Speed Line - first layer	5.5(4.2) Mt./Min.	<b>DANGEROUS:</b> Do not use winch to lift support or transport personnel.	
Speed Line - top layer	9.4(7.5) Mt./Min.		
Gear ratio		1/38 (1/50)	
Orbital hydr. motor		50 cc	
Working pressure		130 bar	
Drum size		160 mm	
Drum clutch		Manual	
Funo - Bologna (Italy) www.vimeindustrial.com		DATE 30/10/2013	
<b>The Quality is Transparent</b>		VIME Industrial reserves the right to improve its products through changes in designed or materials as it may seem desirable without notice.	

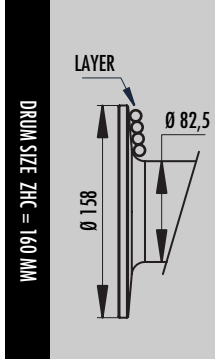
PLUGS	SCALE	WEIGHTS
1.Fill	1:1.7	Winch (without oil) 23 Kg
2.Level		Standard
3.Drain		Roller fairlead 3.9 Kg
		Rope tensioner 1.8 Kg
CODE ZHC22K50GRP7		
ZHC30K50GRP7		

## 1.4.1 ZHC 2200 WINCH TECHNICAL DATA

RATIO	WIRE ROPE SIZE [MM]	LAYER	LINE PULL [KG]
38:1	8*	1	2.200
		2	1.870
		3	1.625
		4	1.440
		5	1.290

OIL SUPPLY [LT/MIN]	DRUM REVOLUTION [RPM]	LINE SPEED [MT/MIN]				
		1	2	3	4	5
20	8,0	2,3	2,7	3,1	3,5	3,9
30	14,5	4,1	4,8	5,6	6,3	7,0
40	19,3	5,5	6,4	7,4	8,4	9,4


WIRE ROPE MINIMUM BREAKING LOAD EN 14492-1 [KG]	4.400
---	-------




LAYER	DRUM DIAMETER [MM]		WIRE ROPE ON LAYER [MT]		WIRE ROPE QUANTITY [MT]	
	00 MM	8 MM	00 MM	8 MM	00 MM	8 MM
	5	-	154,5	-	9,2	-
4	-	138,5	-	8,3	-	27,3
3	-	122,5	-	7,3	-	19,1
2	-	106,5	-	6,4	-	11,8
1	-	90,5	-	5,4	-	5,4
0	-	82,5	-	-	-	-

WIRE ROPE CAPACITY [MT]		MAX. WIRE ROPE CAPACITY EN 14492-1 [MT]		MAX. WIRE ROPE CAPACITY [MT]	
00 MM	8 MM	00 MM	8 MM	00 MM	8 MM
-	15	-	19**	-	36

DESCRIPTION	WEIGHTS
	[KGS.]
WINCH (WITHOUT CABLE)	23
ACCESSORY : ROLLERFAIRLEAD	3,9
ACCESSORY : CABLE TENSIONER	1,8

**NOTE** 

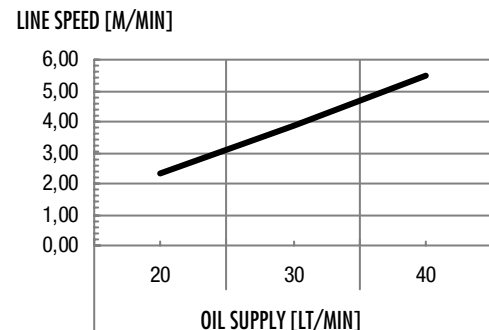
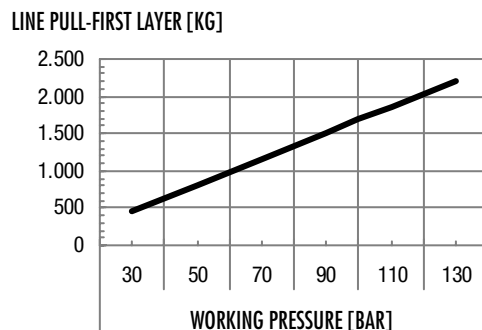
Specifications are subject to change without notification and without incurring obligation. Specifications in this publication are theoretical and may vary depending on hydraulic system, environment, etc.

**NOTE** 

\*Wire rope size must be respected. Recommended wire rope min. tensile strength 2160 N/mm<sup>2</sup>.  
Wire rope minimum breaking load must be at least double of winch max. pulling capacity.

\*\* Max. wire rope capacity according with EN 14492-1.

## 1.4.2 ZHC 2200 WINCH PERFORMANCE CHARTS AT THE 1<sup>ST</sup> LAYER

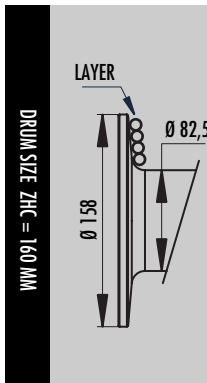


## 1.4.5 ZHC 3000 WINCH TECHNICAL DATA

RATIO	WIRE ROPE SIZE [MM]	LAYER	LINE PULL [KG]
50:1	9*	1	3.000
		2	2.510
		3	2.155
		4	1.890
		5	1.680

OIL SUPPLY [LT/MIN]	DRUM REVOLUTION [RPM]	LINE SPEED [MT/MIN]				
		1	2	3	4	5
20	6,1	1,8	2,1	2,4	2,8	3,1
30	10,9	3,2	3,8	4,4	5,0	5,6
40	14,7	4,2	5,0	5,9	6,7	7,5

WIRE ROPE MINIMUM BREAKING LOAD EN 14492-1 [KG]	6.000
---	-------



LAYER	DRUM DIAMETER [MM]		WIRE ROPE ON LAYER [MT]		WIRE ROPE QUANTITY [MT]	
	00 MM	9 MM	00 MM	9 MM	00 MM	9 MM
	5	-	163,5	-	8,6	-
4	-	145,5	-	7,7	-	25,1
3	-	127,5	-	6,7	-	17,4
2	-	109,5	-	5,8	-	10,6
1	-	91,5	-	4,8	-	4,8
0	-	82,5	-	-	-	-

WIRE ROPE CAPACITY [MT]		MAX. WIRE ROPE CAPACITY EN 14492-1 [MT]		MAX. WIRE ROPE CAPACITY [MT]	
00 MM	9 MM	00 MM	9 MM	00 MM	9 MM
-	15	-	17**	-	26

DESCRIPTION	WEIGHTS
	[KGS.]
WINCH (WITHOUT CABLE)	23
ACCESSORY : ROLLERFAIRLEAD	3,9
ACCESSORY : CABLE TENSIONER	1,8

### NOTE

Specifications are subject to change without notification and without incurring obligation. Specifications in this publication are theoretical and may vary depending on hydraulic system, environment, etc.

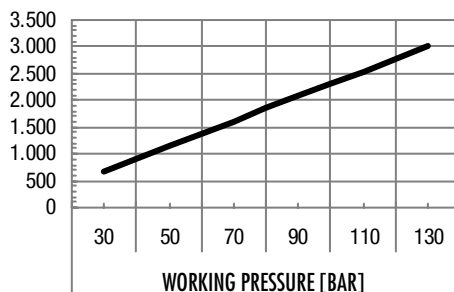
### NOTE

\*Wire rope size must be respected. Recommended wire rope min. tensile strength 2160 N/mm<sup>2</sup>.  
Wire rope minimum breaking load must be at least double of winch max. pulling capacity.

\*\* Max. wire rope capacity according with EN 14492-1.

## 1.4.6 ZHC 3000 WINCH PERFORMANCE CHARTS AT THE 1<sup>ST</sup> LAYER

LINE PULL-FIRST LAYER [KG]



LINE SPEED [M/MIN]

