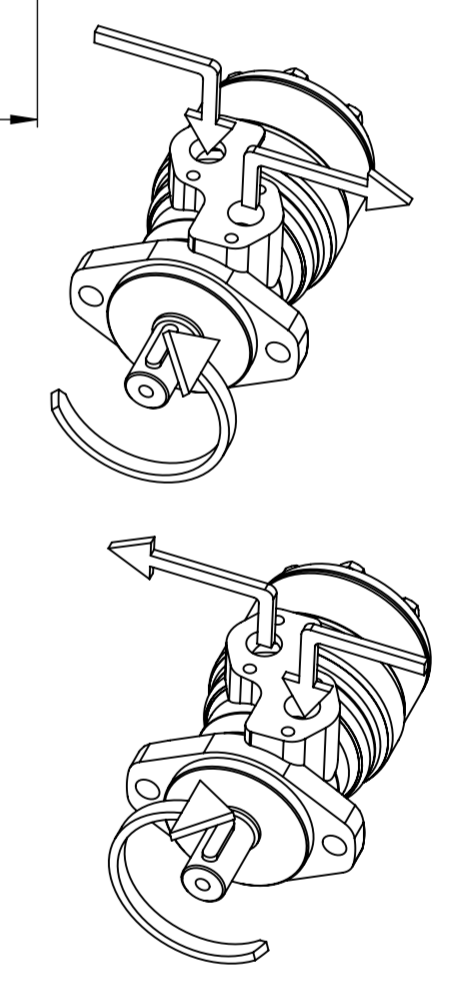
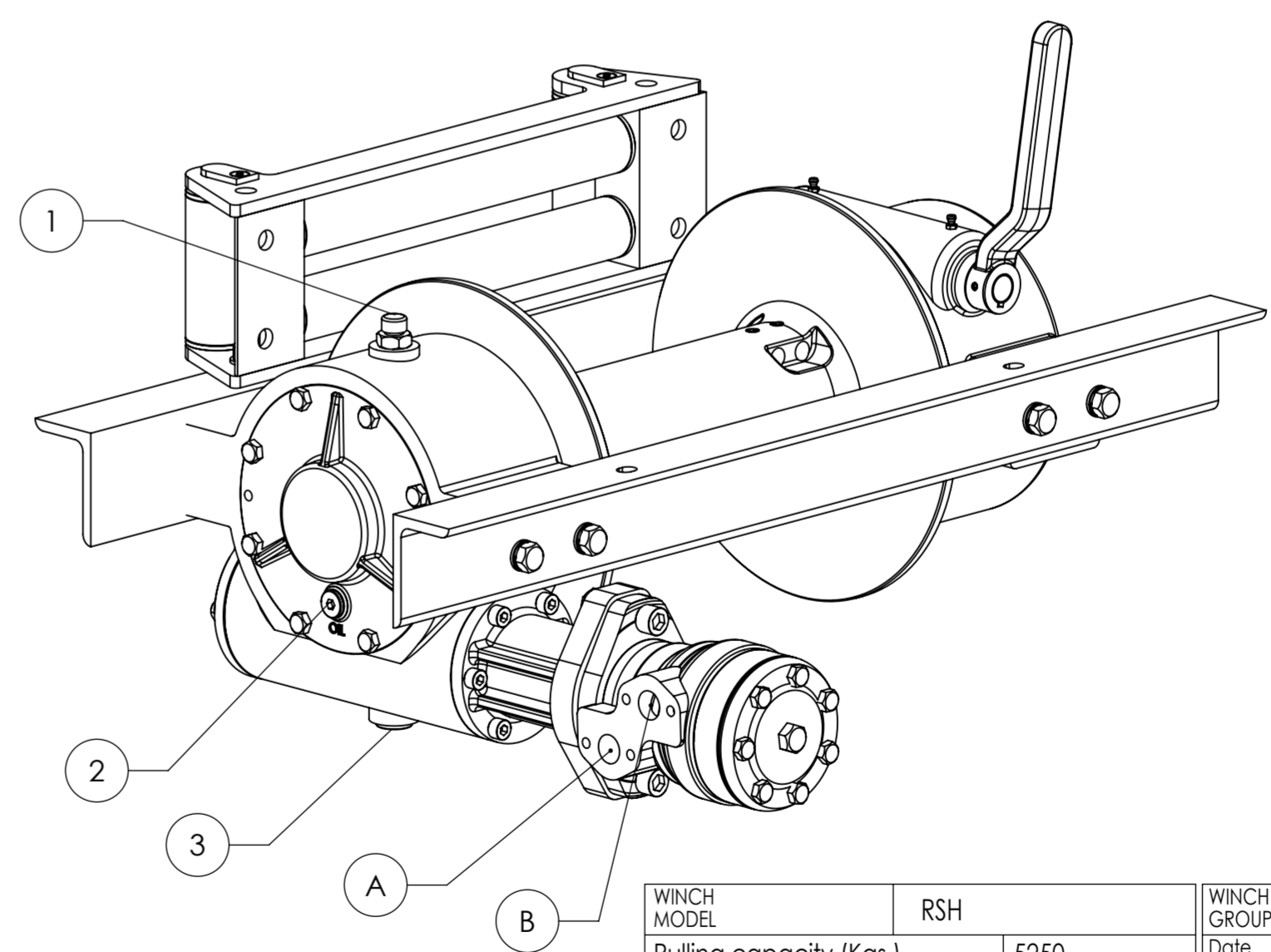
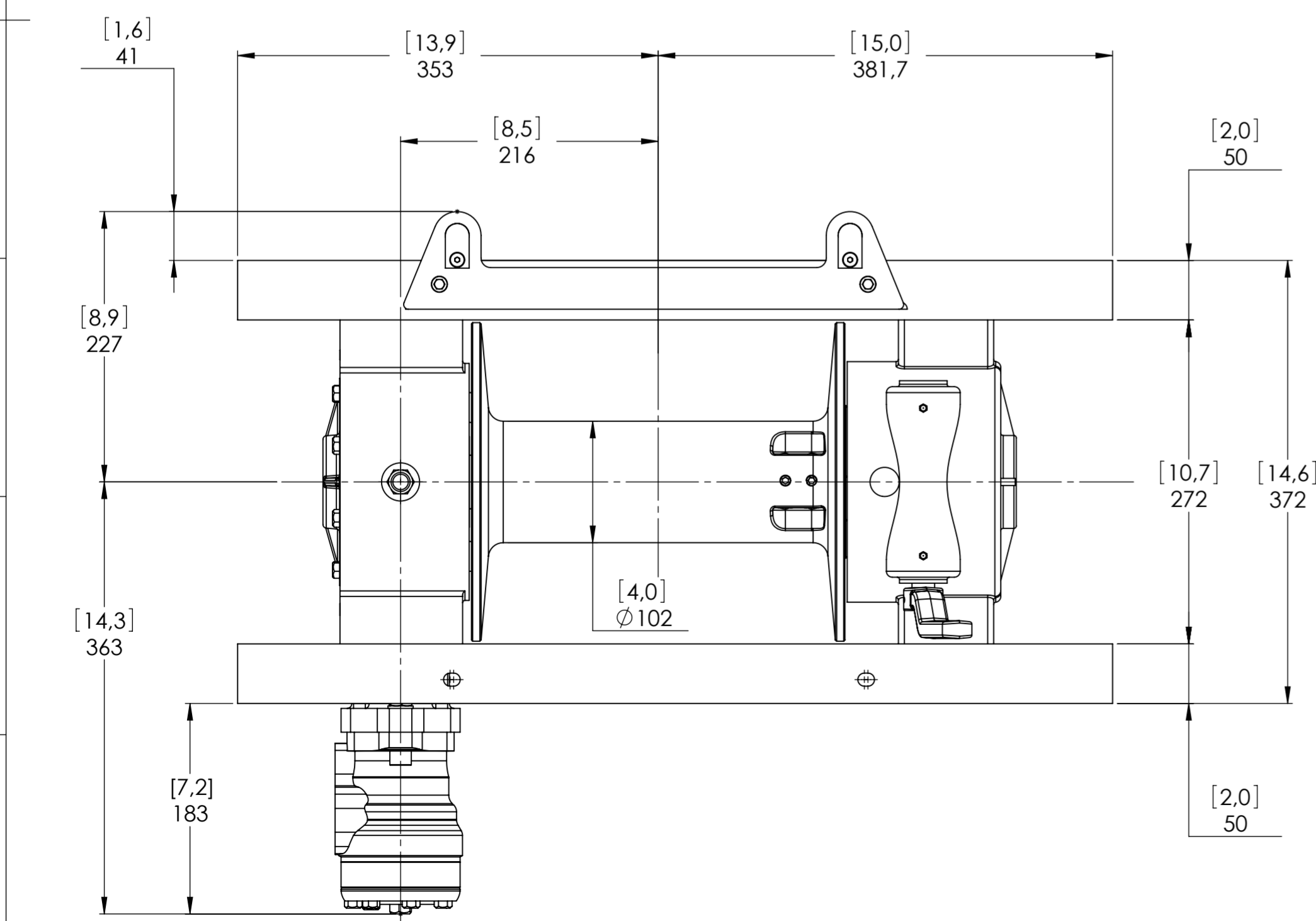
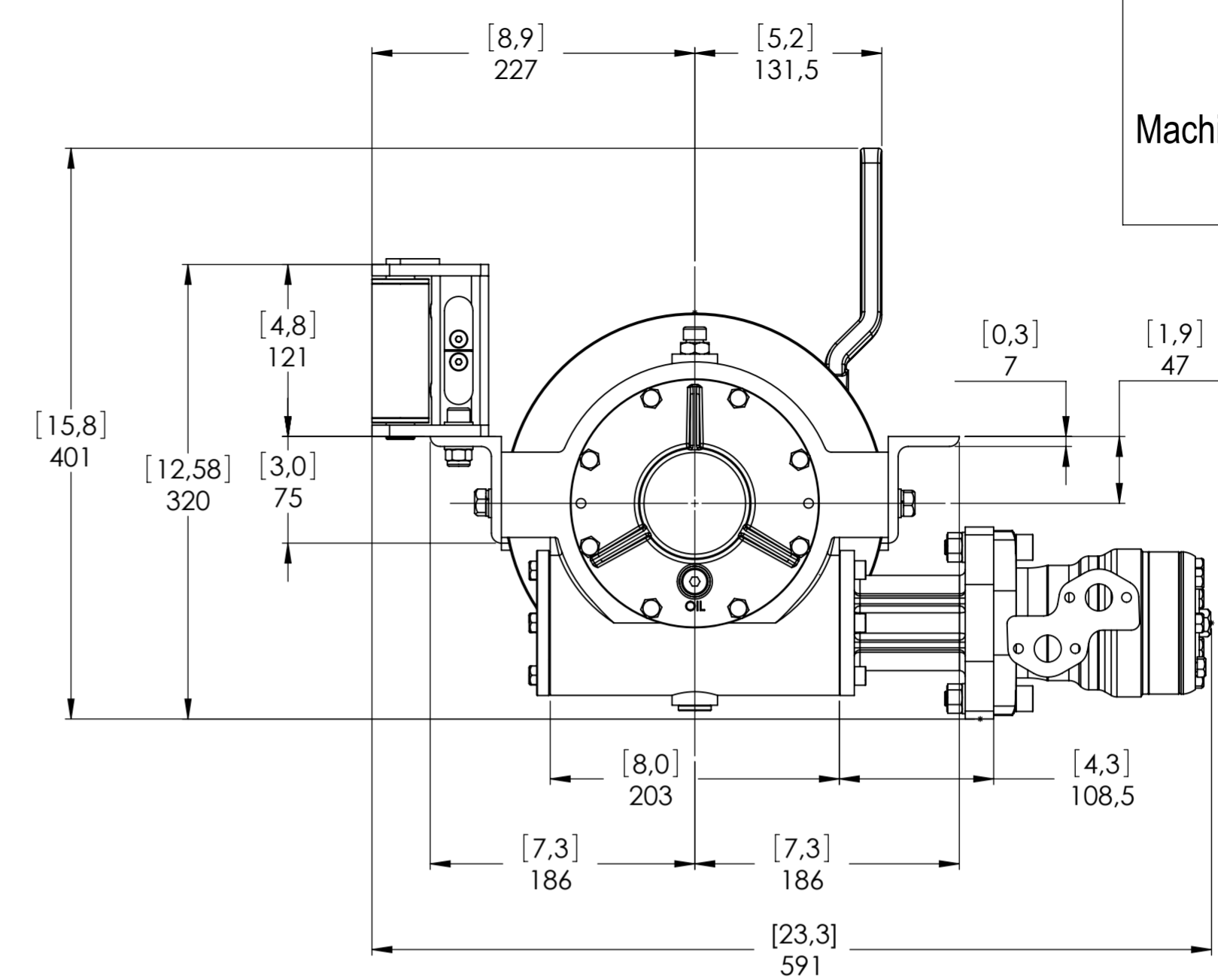
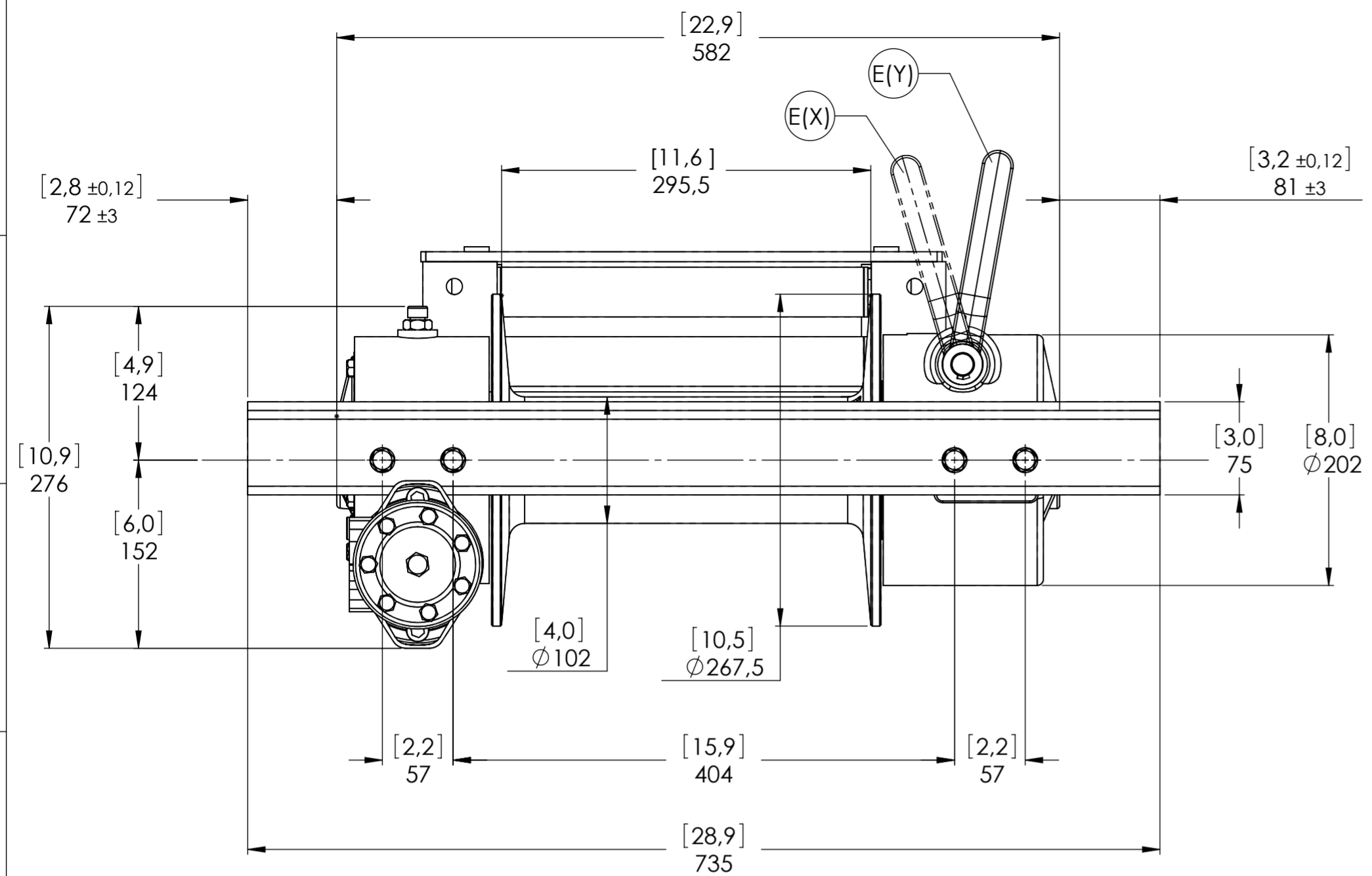


Machinery Directive 2006/42/CE  
EN 14492-1



CONNECTIONS	
A	1/2" G
B	1/2" G
C	-----
E (X) DISENGAGED	-----
E (Y) ENGAGED	-----

PLUGS	
1.Fill	3/8" G
2.Level	1/4" G
3.Drain	3/8" G

SCALE 1:4

WEIGHTS	
Winch (without oil)	60 Kgs.
Roller fairlead	-----
Heavy-duty roller fairlead	9,6 Kgs.
Rope tensiometer	2,2 Kgs.

CODE RSH52D160GR

WINCH MODEL	RSH	WINCH GROUP	WORM GEAR
Pulling capacity (Kgs.)	5250	Date	Modification
Max.Oil flow	60 Lt./Min.		
Speed Line - first layer	4,3 Mt./Min.		
Speed Line - top layer	7,6 Mt./Min.		

**DANGEROUS:** Do not use winch to lift support or transport personnel.

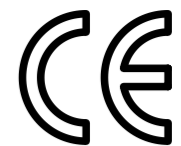
Gear ratio	29:1
Orbital hydr. motor	160 cc
Working pressure	140 bar
Drum size	295,5 mm
Drum clutch	Manual

**VIME INDUSTRIAL**  
Funo - Bologna (Italy)  
www.vimeindustrial.com

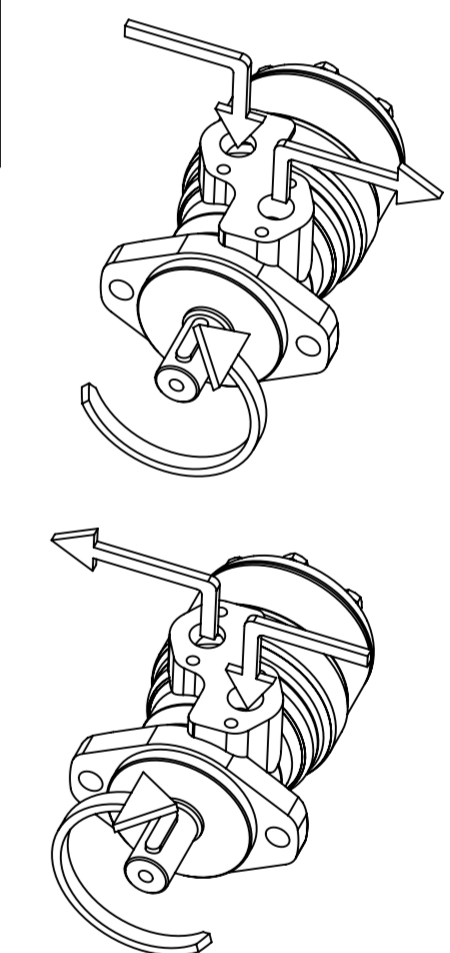
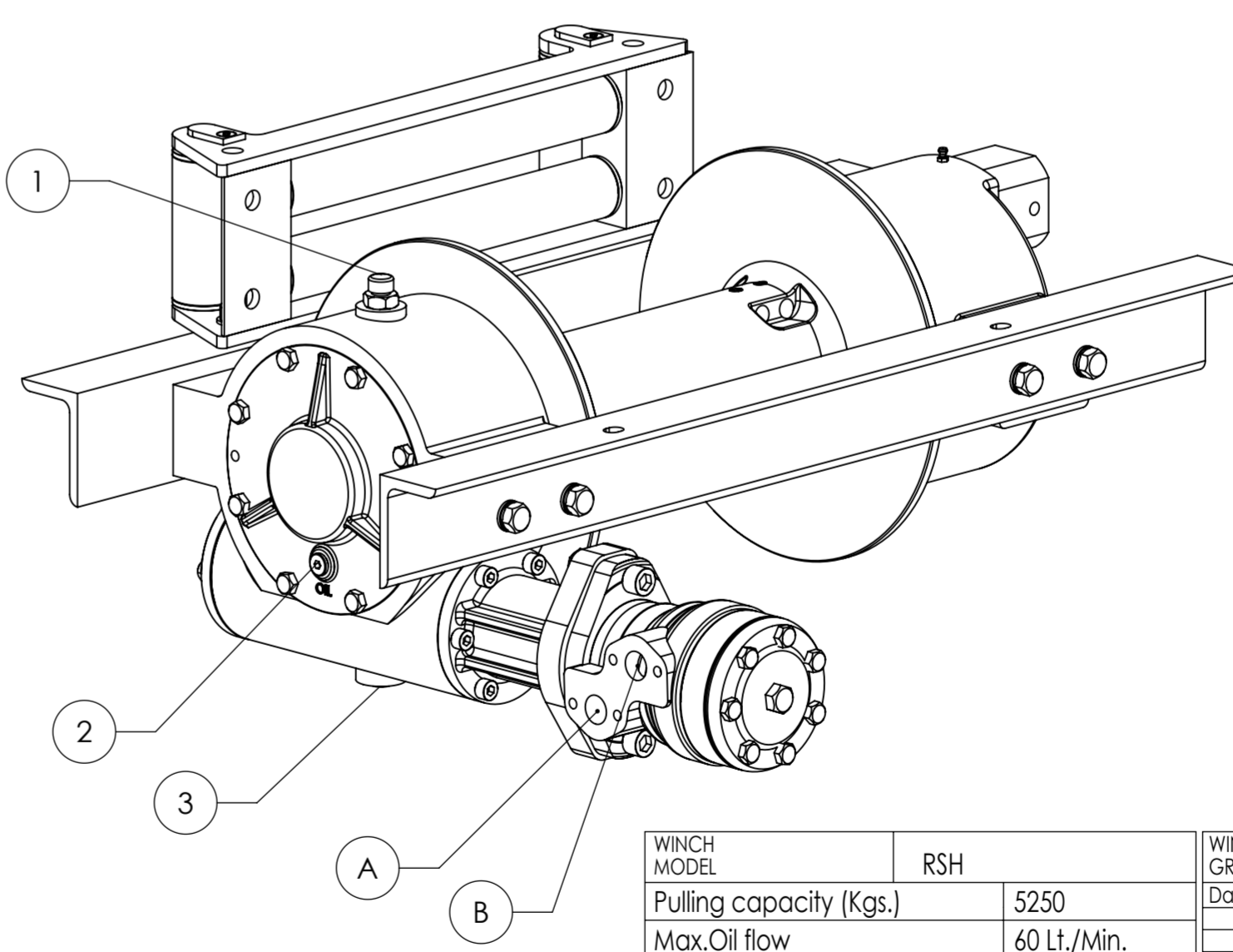
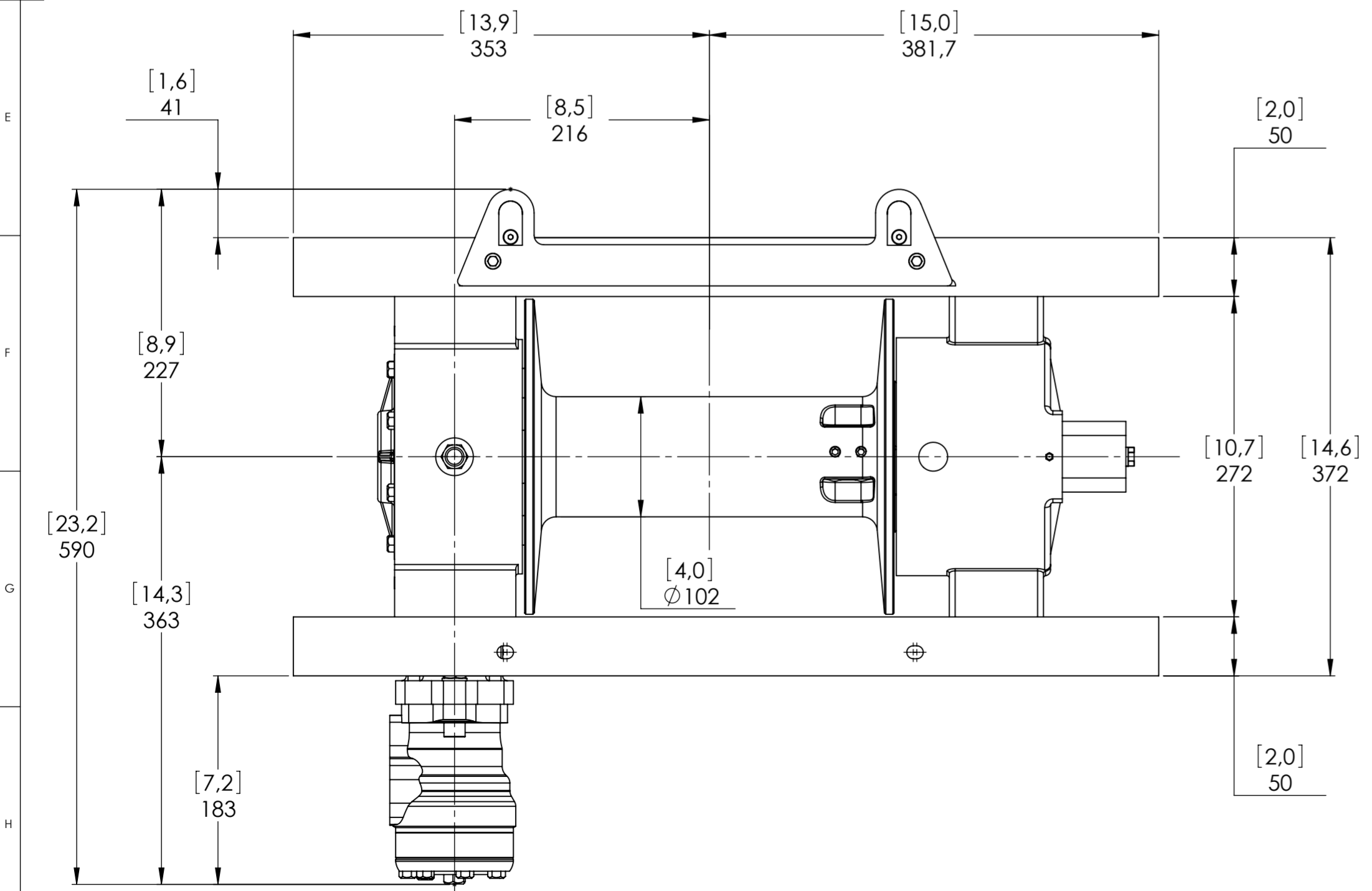
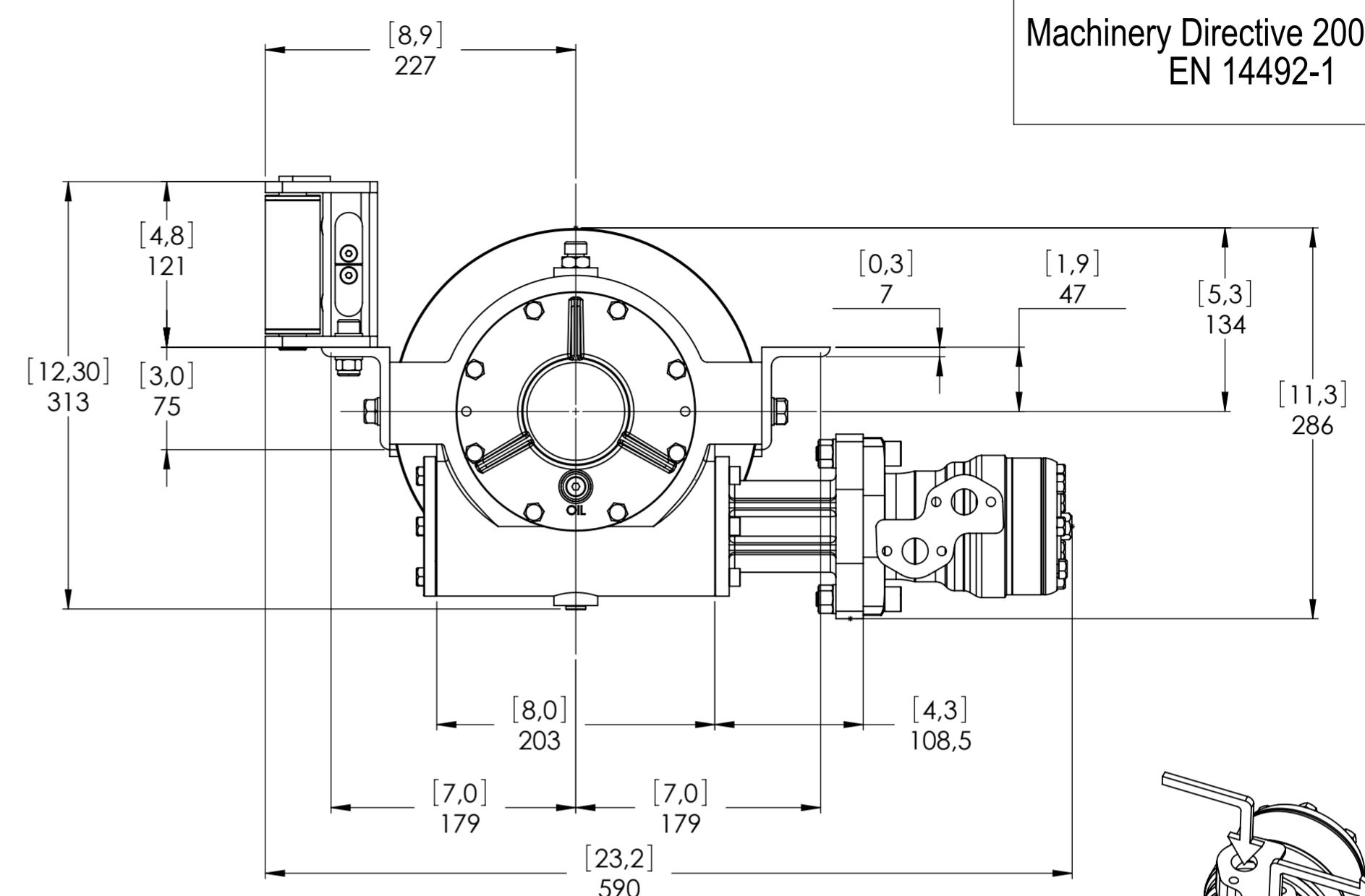
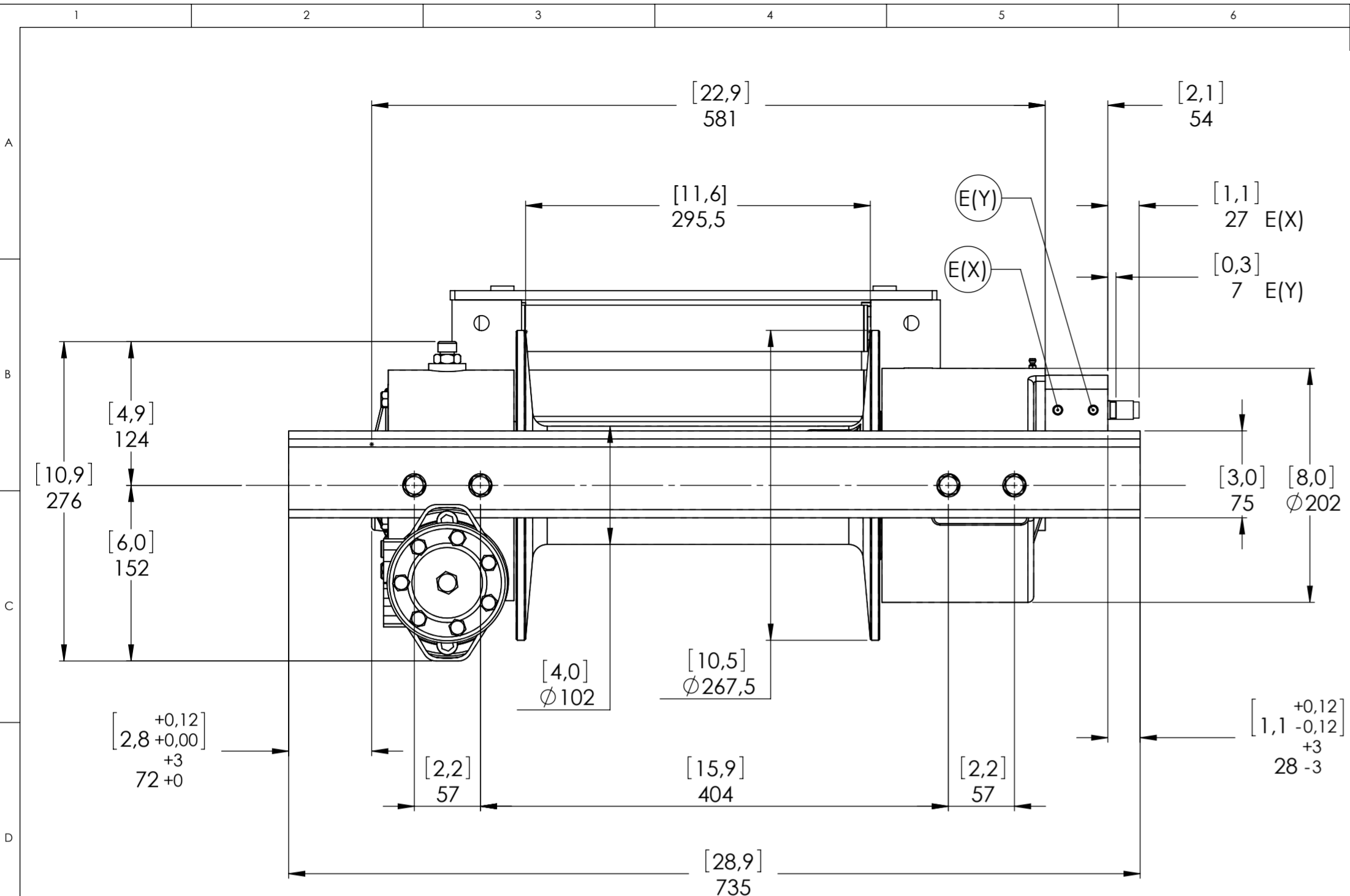
*The Quality is Transparent*

VIME Industrial reserves the right to improve its products through changes in designed or materials as it may seem desirable without notice.

DATE 09/06/2010



Machinery Directive 2006/42/CE  
EN 14492-1



WINCH MODEL	RSH	WINCH GROUP	WORM GEAR
Pulling capacity (Kgs.)	5250	Date	Modification
Max.Oil flow	60 Lt./Min.		
Speed Line - first layer	4,3 Mt./Min.		
Speed Line - top layer	7,6 Mt./Min.		

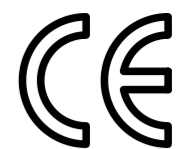
CONNECTIONS	
A	1/2"G
B	1/2"G
C	-----
E (X) DISENGAGED	1/8"G
E (Y) ENGAGED	1/8"G

PLUGS	
1.Fill	3/8"G
2.Level	1/4"G
3.Drain	3/8"G
SCALE 1:4	
WEIGHTS	
Winch (without oil)	60 Kgs.
Roller fairlead	-----
Heavy-duty roller fairlead	9,6 Kgs.
Rope tensioner	2,2 Kgs.
DATE 12/05/2010	

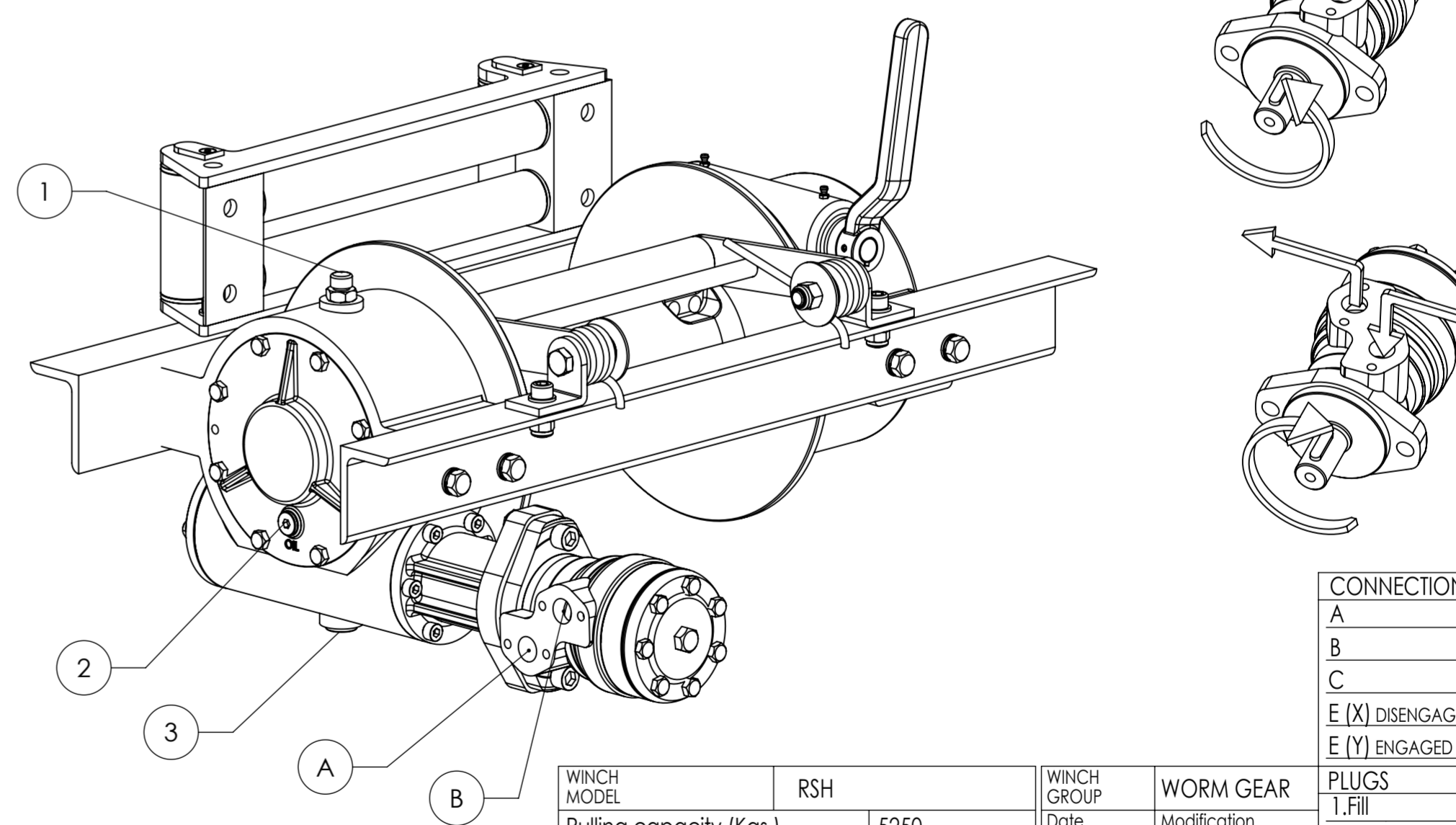
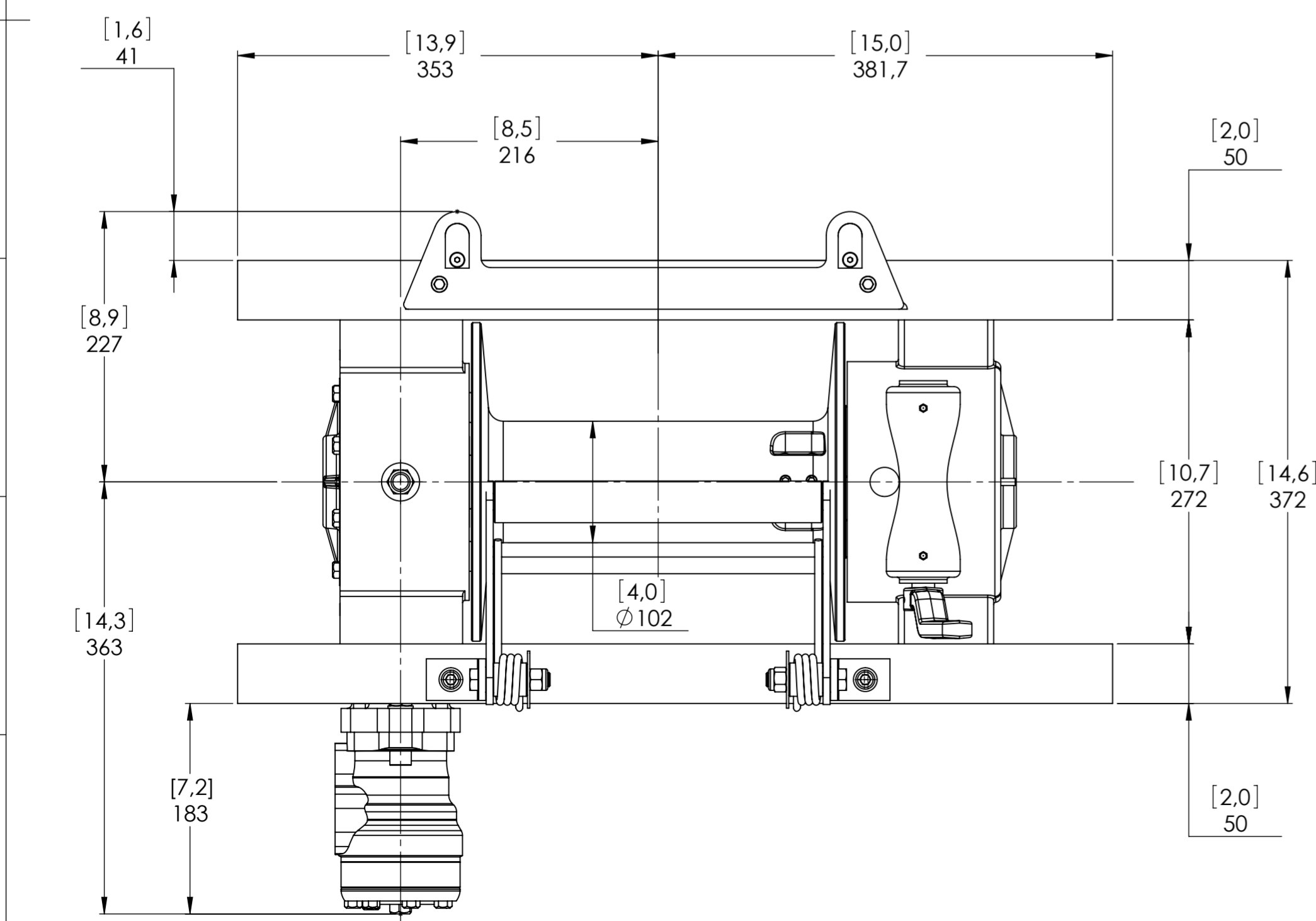
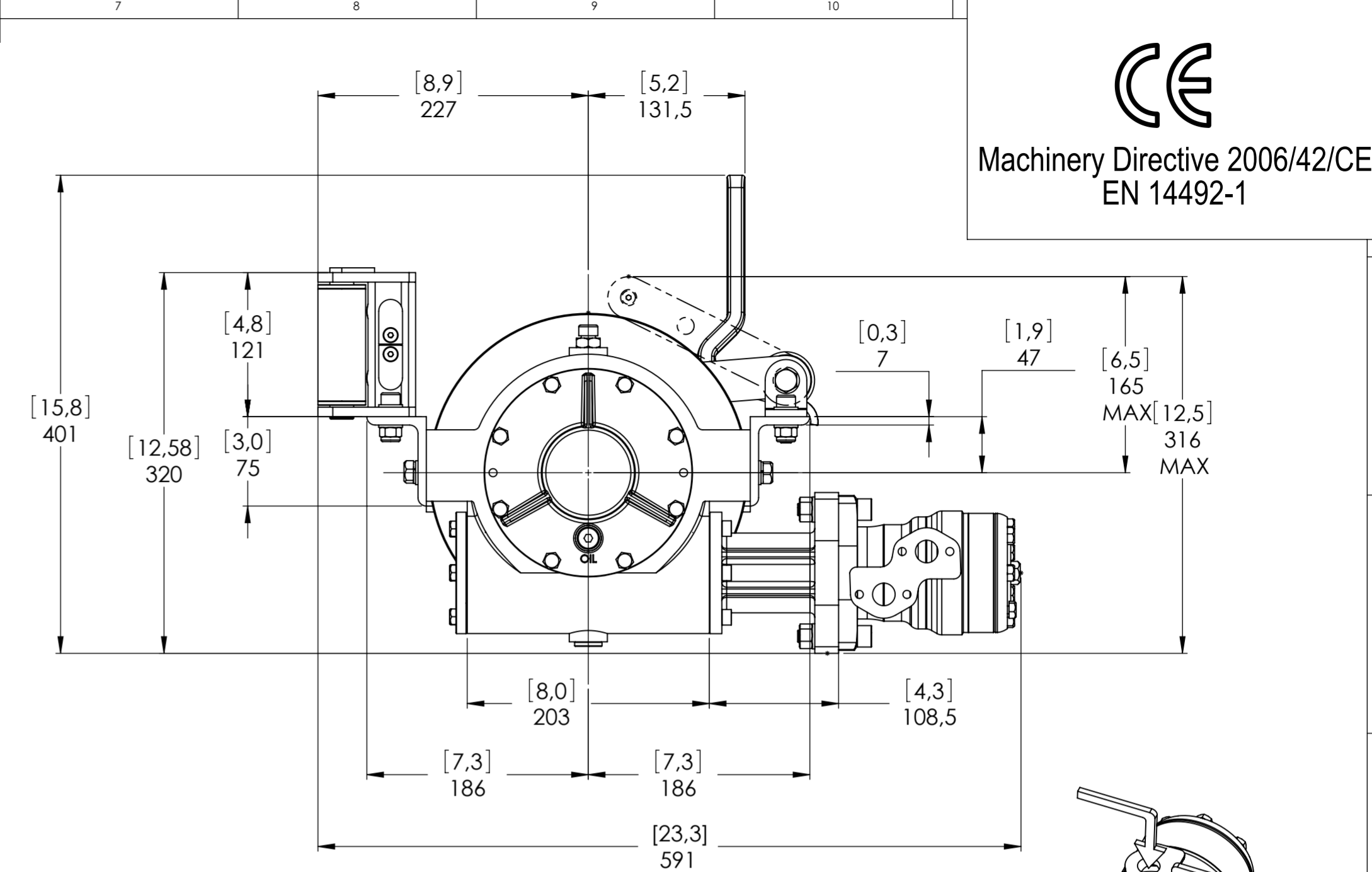
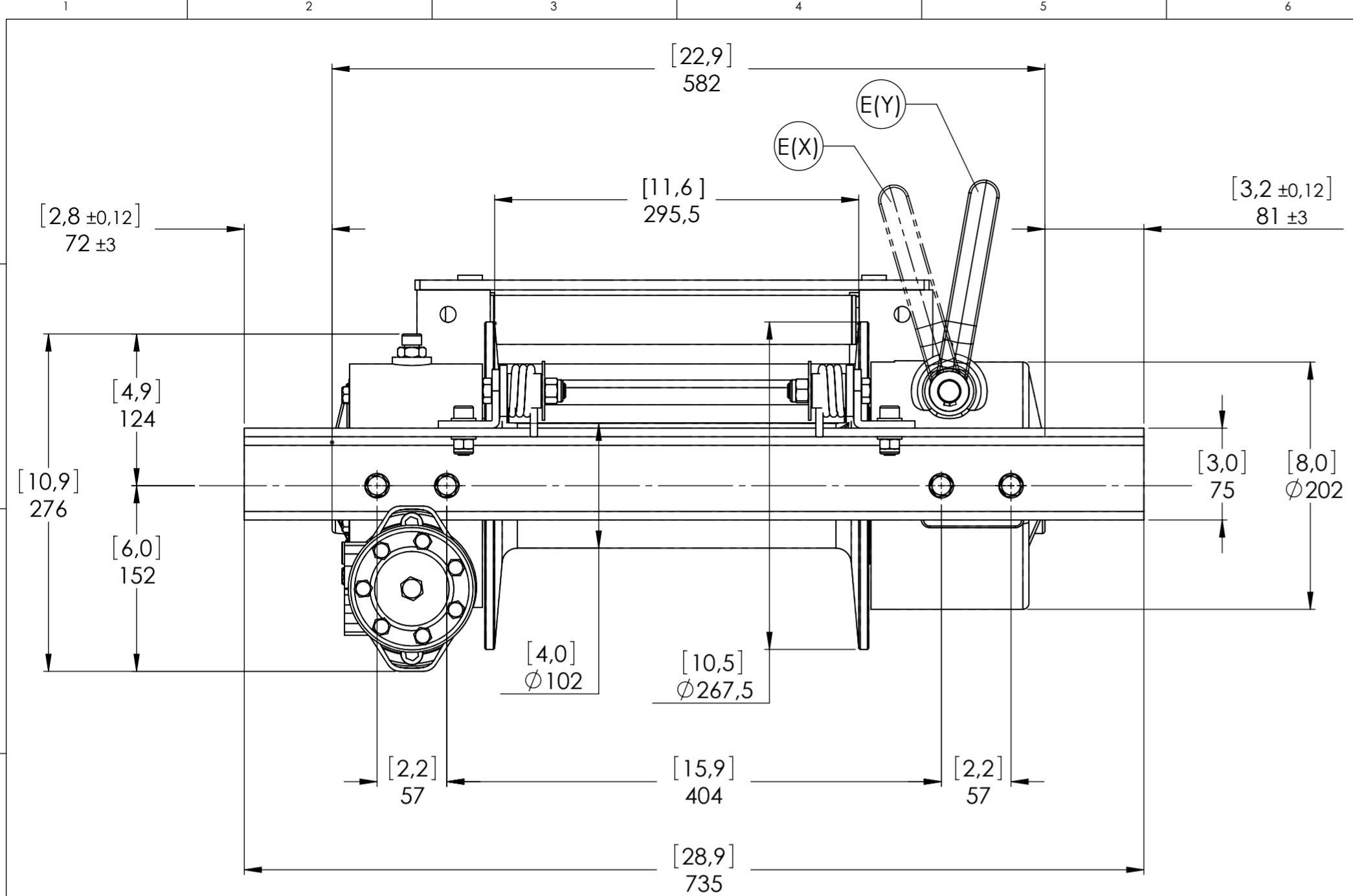
**VIME INDUSTRIAL**  
Funo - Bologna (Italy)  
www.vimeindustrial.com  
*The Quality is Transparent*

Gear ratio	29:1
Orbital hydr. motor	160 cc
Working pressure	140 bar
Drum size	295,5 mm
Drum clutch	Air-operated
VIME Industrial : reserves the right to improve its products through changes in designed or materials as it may seem desirable without notice	

CONNECTIONS	
A	1/2"G
B	1/2"G
C	-----
E (X) DISENGAGED	1/8"G
E (Y) ENGAGED	1/8"G
PLUGS	
1.Fill	3/8"G
2.Level	1/4"G
3.Drain	3/8"G
SCALE 1:4	
WEIGHTS	
Winch (without oil)	60 Kgs.
Roller fairlead	-----
Heavy-duty roller fairlead	9,6 Kgs.
Rope tensioner	2,2 Kgs.
CODE	RSH52D160AGR



Machinery Directive 2006/42/CE  
EN 14492-1



CONNECTIONS	
A	1/2" G
B	1/2" G
C	-----
E (X) DISENGAGED	-----
E (Y) ENGAGED	-----

PLUGS	
1.Fill	3/8" G
2.Level	1/4" G
3.Drain	3/8" G

SCALE 1:4

WEIGHTS	
Winch (without oil)	60 Kgs.
Roller fairlead	-----
Heavy-duty roller fairlead	9,6 Kgs.
Rope tensioner	2,2 Kgs.

CODE RSH52D160GRP

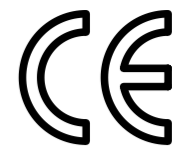
WINCH MODEL	RSH	WINCH GROUP	WORM GEAR
Pulling capacity (Kgs.)	5250	Date	Modification
Max.Oil flow	60 Lt./Min.		
Speed Line - first layer	4,3 Mt./Min.		
Speed Line - top layer	7,6 Mt./Min.		

**DANGEROUS:** Do not use winch to lift support or transport personnel.

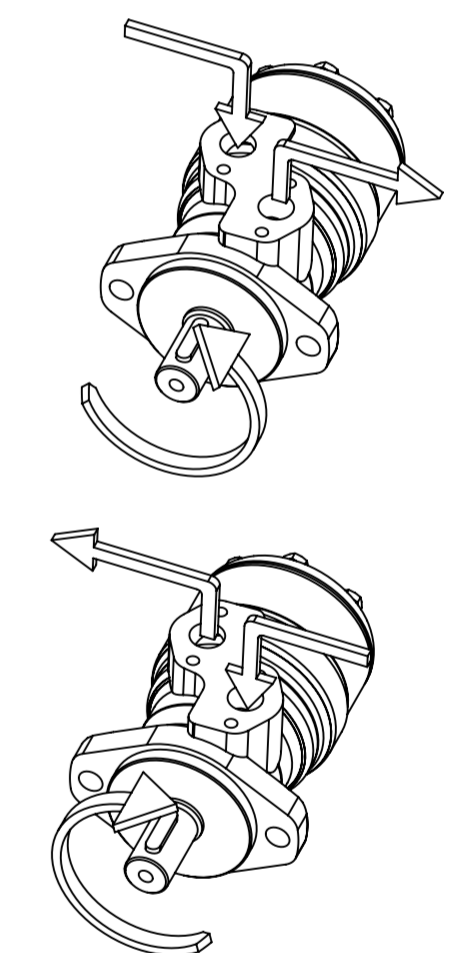
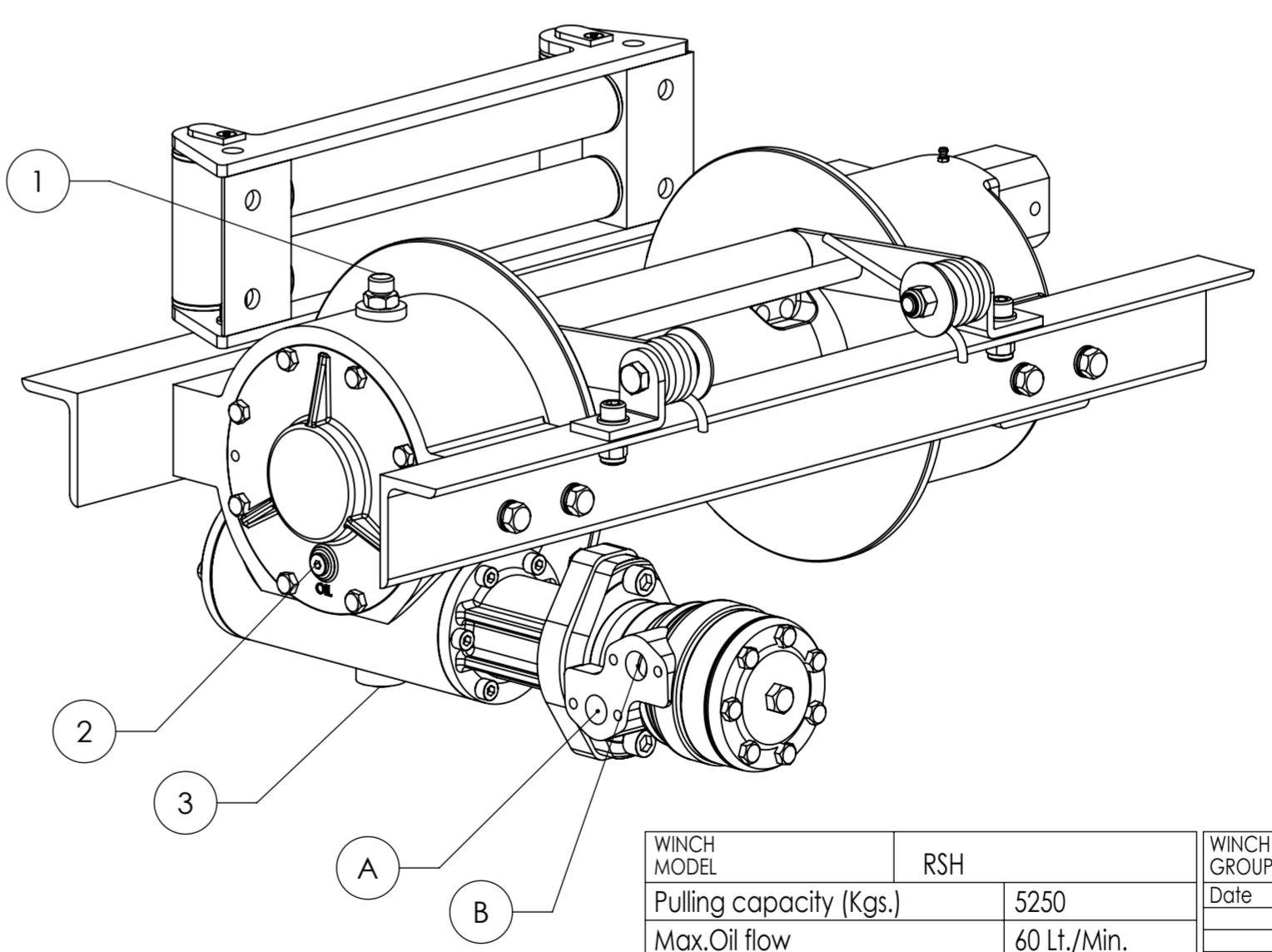
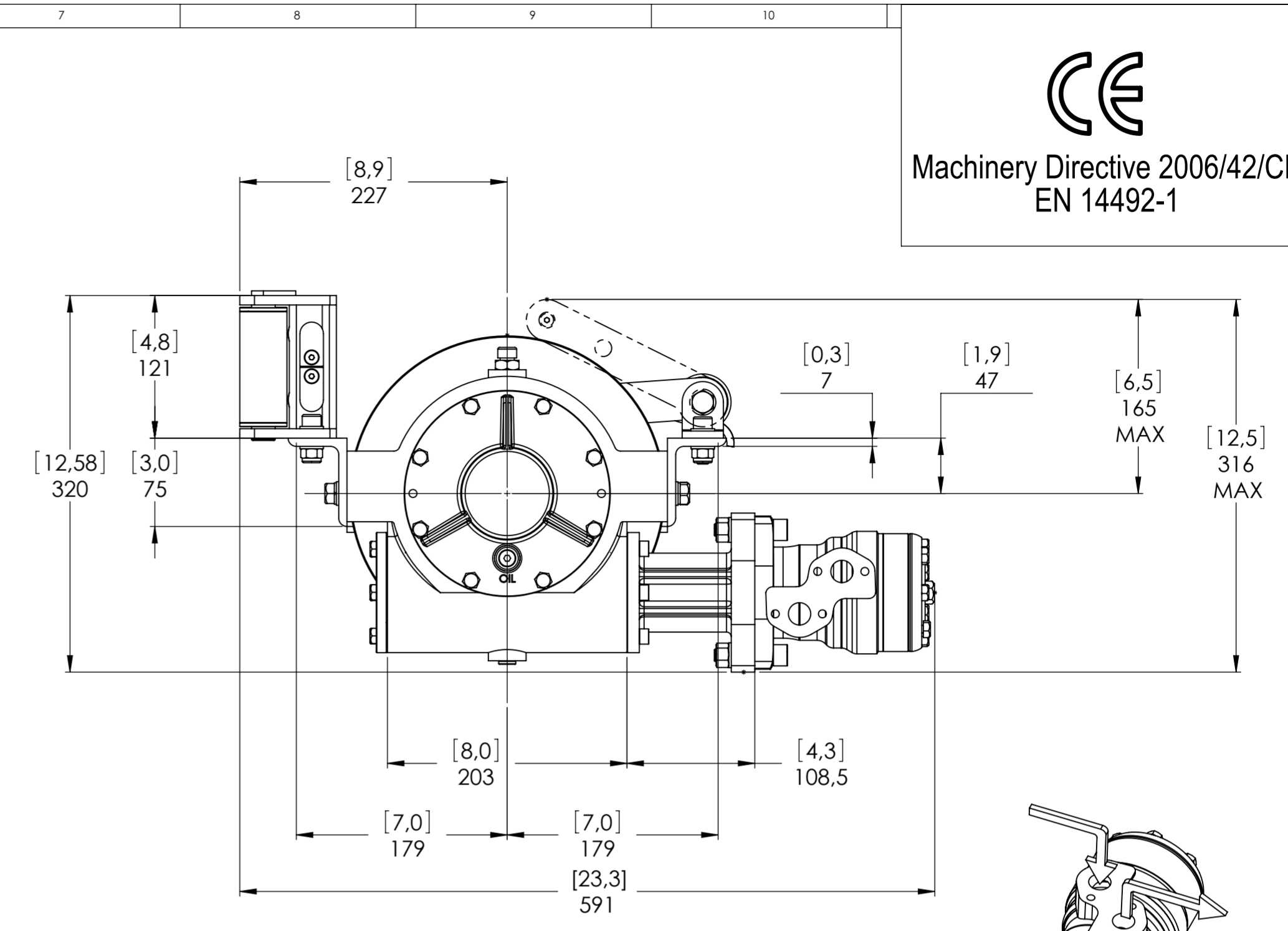
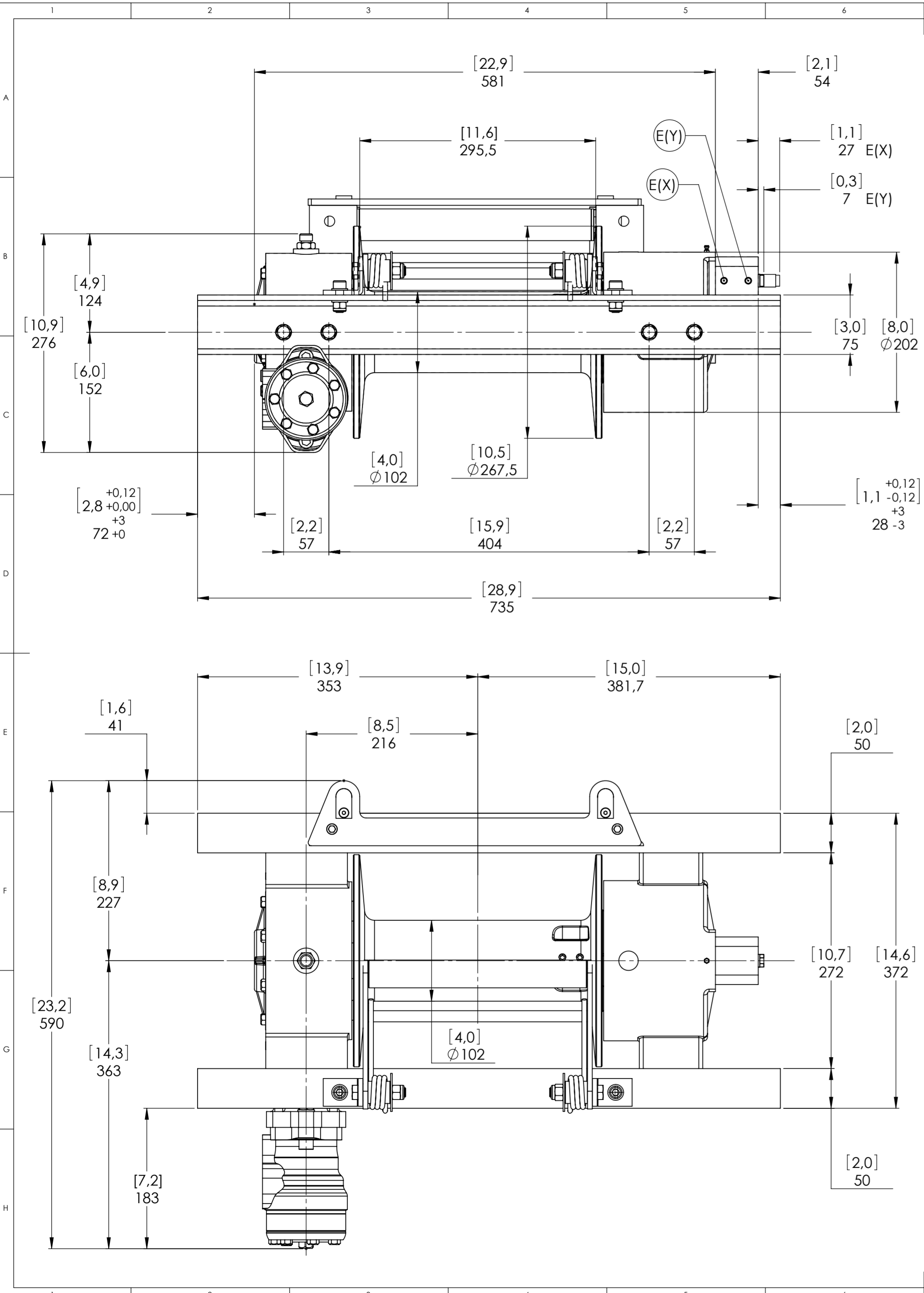
Gear ratio	29:1
Orbital hydr. motor	160 cc
Working pressure	140 bar
Drum size	295,5 mm
Drum clutch	Manual

**VIME INDUSTRIAL**  
Funo - Bologna (Italy)  
www.vimeindustrial.com  
*The Quality is Transparent*

VIME Industrial reserves the right to improve its products through changes in designed or materials as it may seem desirable without notice. DATE 09/06/2010



Machinery Directive 2006/42/CE  
EN 14492-1



WINCH MODEL	RSH	WINCH GROUP	WORM GEAR
Pulling capacity (Kgs.)	5250	Date	Modification
Max.Oil flow	60 Lt./Min.		
Speed Line - first layer	4,3 Mt./Min.		
Speed Line - top layer	7,6 Mt./Min.		

<b>DANGEROUS:</b> Do not use winch to lift support or transport personnel.	
Gear ratio	29:1
Orbital hydr. motor	160 cc
Working pressure	140 bar
Drum size	295,5 mm
Drum clutch	Air-operated

**VIME INDUSTRIAL**  
Funo - Bologna (Italy)  
www.vimeindustrial.com  
*The Quality is Transparent*

SCALE	1:4
WEIGHTS	
Winch (without oil)	60 Kgs.
Roller fairlead	-----
Heavy-duty roller fairlead	9,6 Kgs.
Rope tensioner	2,2 Kgs.
DATE	09/06/2010

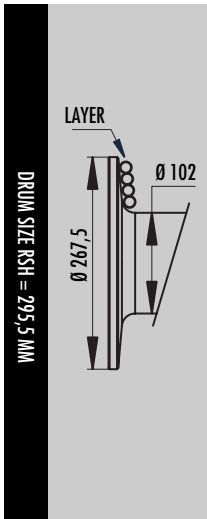
CONNECTIONS	
A	1/2"G
B	1/2"G
C	-----
E (X) DISENGAGED	1/8"G
E (Y) ENGAGED	1/8"G
PLUGS	
1.Fill	3/8"G
2.Level	1/4"G
3.Drain	3/8"G
CODE RSH52D160AGRP	

### 1.4.9 RSH 5250 WINCH TECHNICAL DATA

RATIO	WIRE ROPE SIZE [MM]	LAYER	LINE PULL
			[KGS]
29:1	11*	1	5.250
		2	4.395
		3	3780
		4	3315
		5	2950

OIL SUPPLY [LT/MIN]	DRUM REVOLUTION [RPM]	LINE SPEED [MT/MIN]				
		1	2	3	4	5
30	7,3	1,8	2,2	2,6	2,9	3,3
40	9,7	2,8	3,4	4,0	4,5	5,1
60	14,9	4,3	5,1	5,9	6,8	7,6

WIRE ROPE MIN. BREAKING LOAD EN 14492-1 [KGS.]	10.500
--	--------



LAYER	DRUM DIAMETER		WIRE ROPE ON LAYER		WIRE ROPE QUANTITY	
	Ø MM	-	[MT]		[MT]	
			11 MM	00 MM	11 MM	00 MM
8	267	-	21,7	-	123,5	-
7	245	-	19,9	-	101,8	-
6	223	-	18,1	-	81,9	-
5	201	-	16,3	-	63,8	-
4	179	-	14,5	-	47,5	-
3	157	-	12,8	-	32,9	-
2	135	-	11,0	-	20,2	-
1	113	-	9,2	-	9,2	-
0	102	-	-	-	-	-

WIRE ROPE CAPACITY [MT]		MAX. WIRE ROPE CAPACITY EN 14492-1 [MT]		MAX. WIRE ROPE CAPACITY [MT]	
11 MM	00 MM	11 MM	00 MM	11 MM	00 MM
30	00	81**	00	123	00

DESCRIPTION	WEIGHTS
	[KG]
WINCH (WITHOUT CABLE)	60
ACCESSORY : ROLLER FAIRLEAD	9,6
ACCESSORY : CABLE TENSIONER	2,2

#### NOTES

Specifications are subject to change without notification and without incurring obligation. Specifications in this publication are theoretical and may vary depending on hydraulic system, environment, etc.

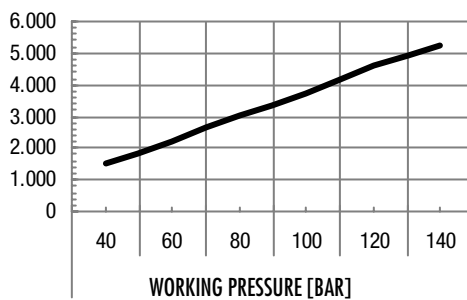
#### NOTES

\*Wire rope size must be respected. Recommended wire rope min. tensile strength 2160 N/mm<sup>2</sup>.  
Wire rope minimum breaking load must be at least double of winch max. pulling capacity.

\*\* Max. wire rope capacity according with EN 14492-1.

### 1.4.10 RSH 5250 WINCH PERFORMANCE CHARTS AT THE 1<sup>ST</sup> LAYER

LINE PULL-FIRST LAYER [KG]



LINE SPEED [MT/MIN]

