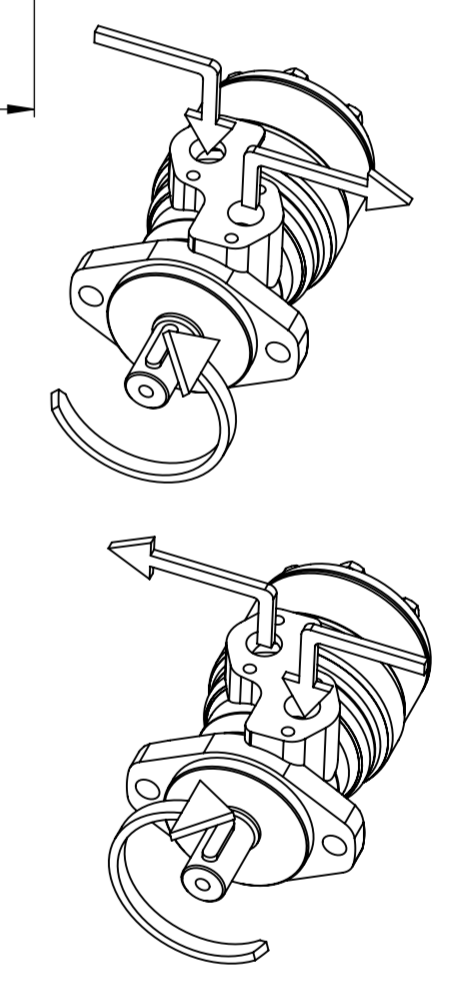
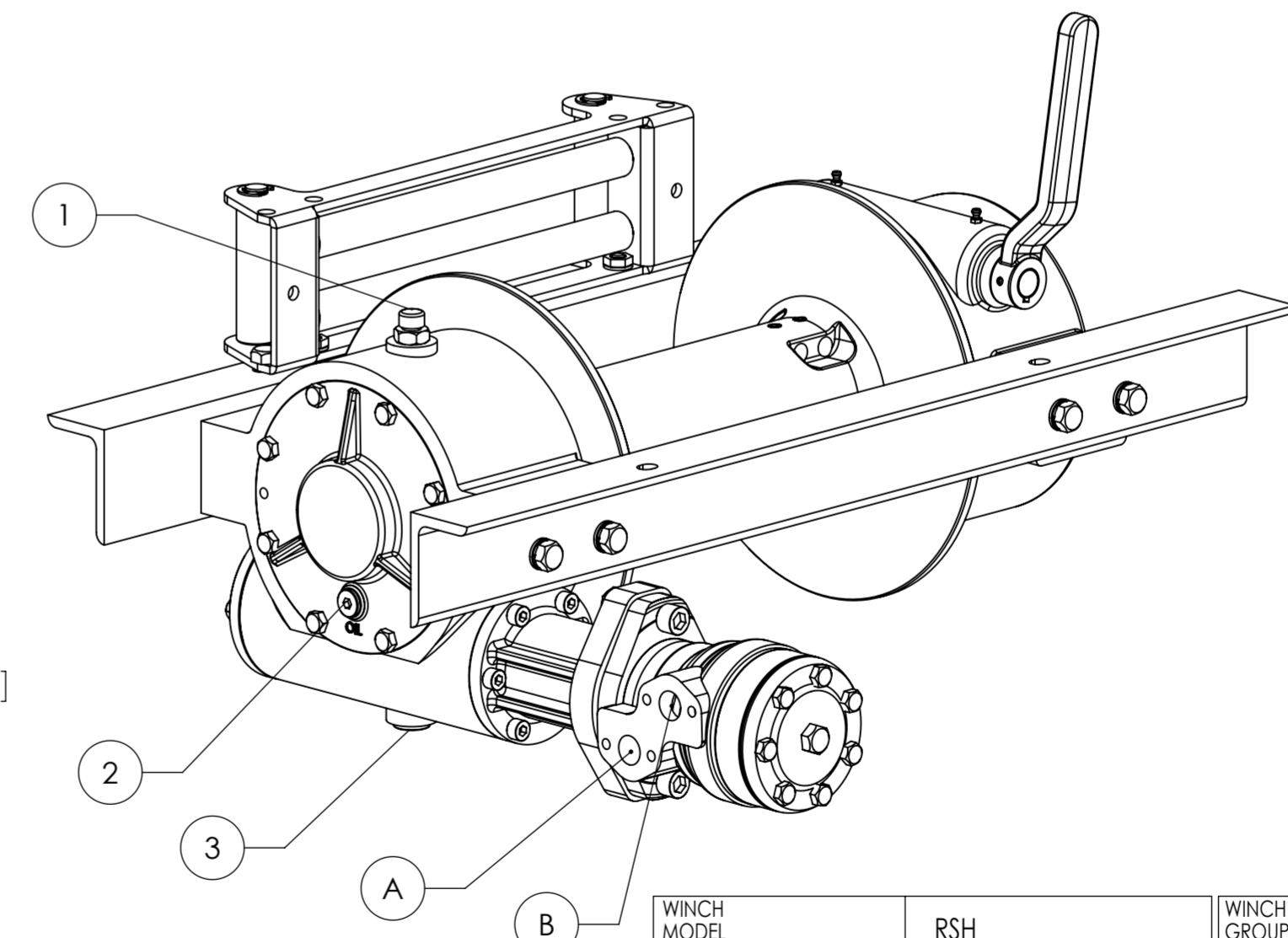
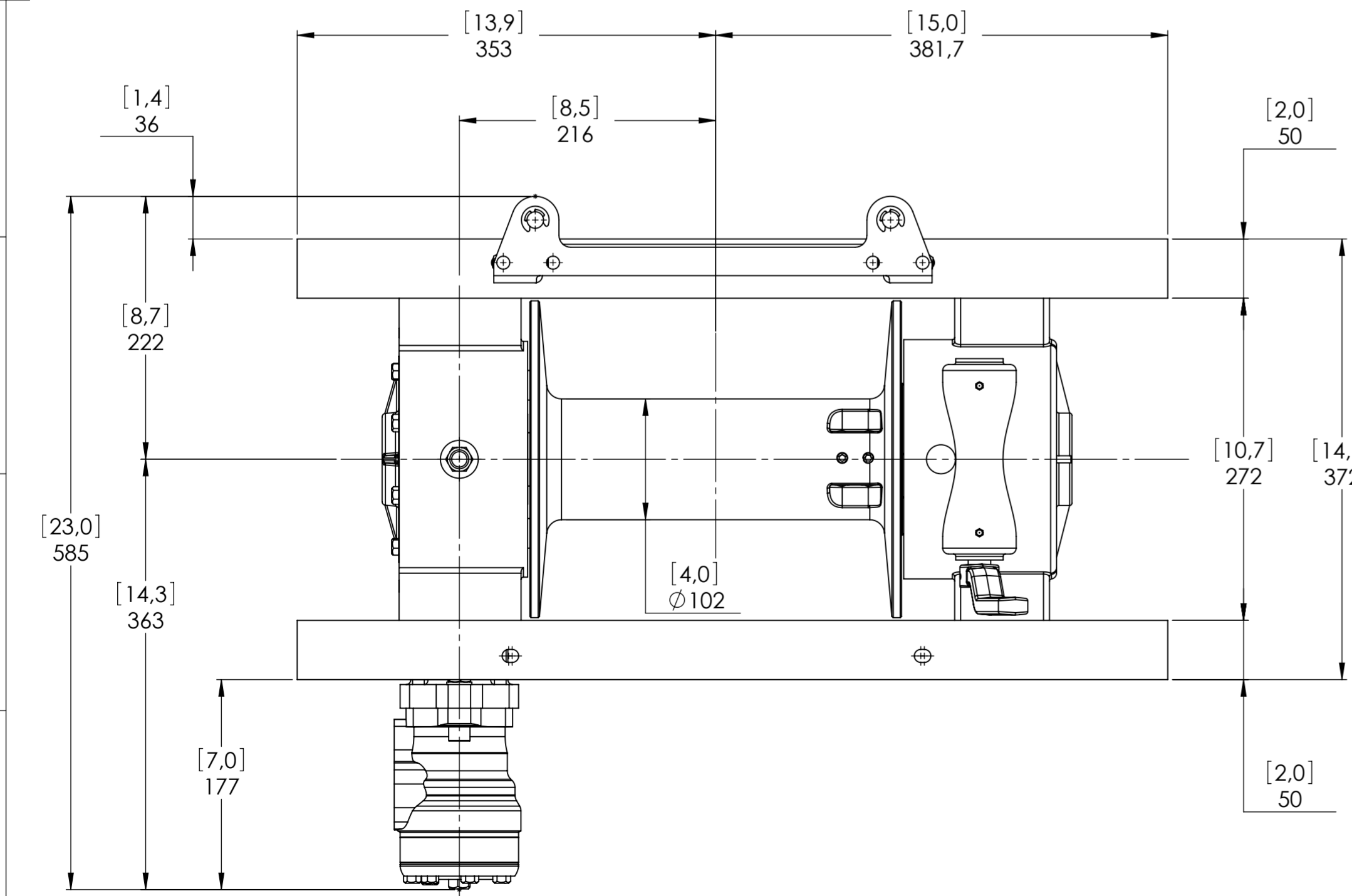
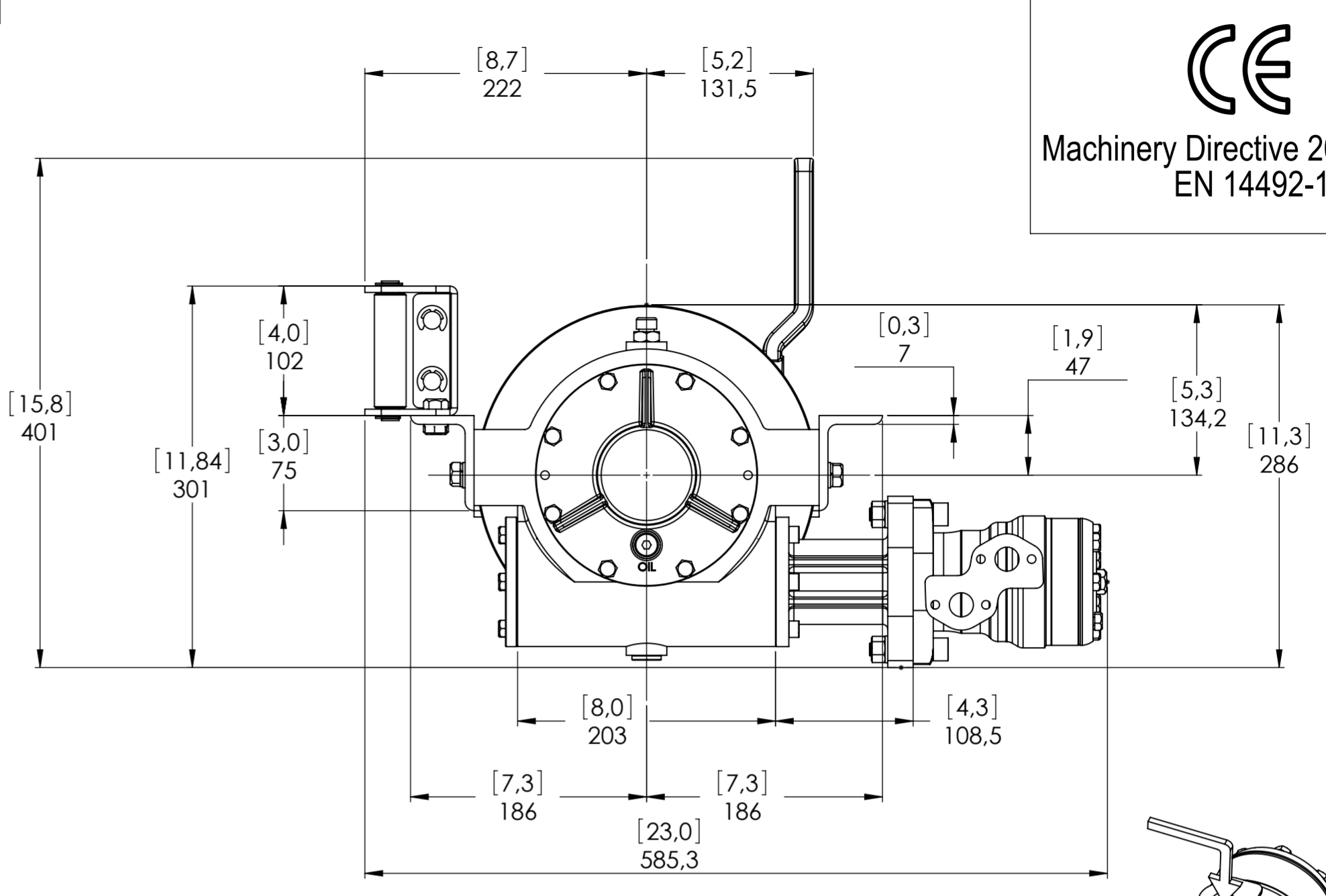
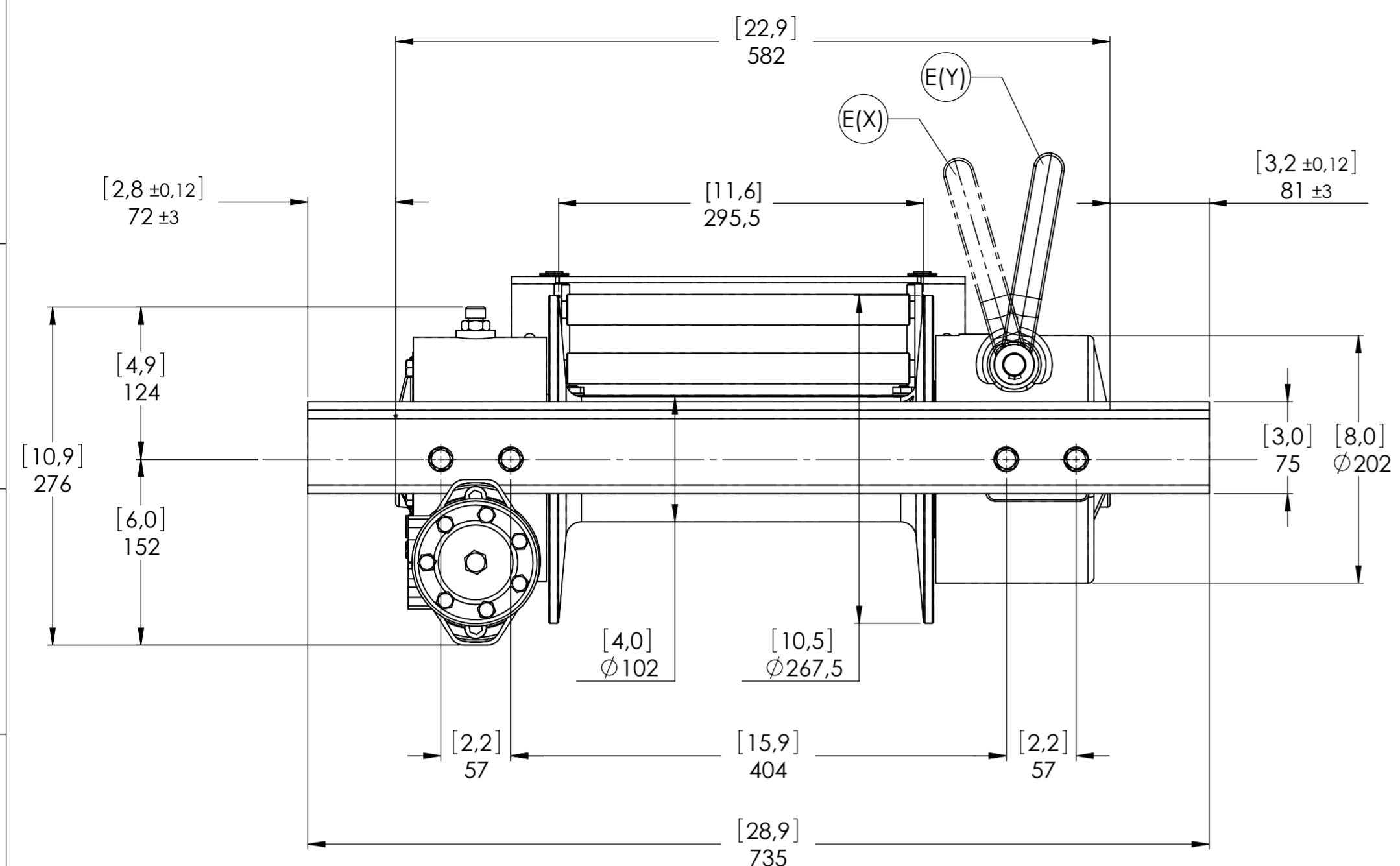


Machinery Directive 2006/42/CE
EN 14492-1



WINCH MODEL	RSH	WINCH GROUP	WORM GEAR
Pulling capacity (Kgs.)	4500	Date	Modification
Max.Oil flow	60 Lt./Min.		
Speed Line - first layer	5,3 Mt./Min.		
Speed Line - top layer	9,4 Mt./Min.		

DANGEROUS: Do not use winch to lift support or transport personnel.	
Gear ratio	29:1
Orbital hydr. motor	125 cc
Working pressure	150 bar
Drum size	295,5 mm
Drum clutch	Manual

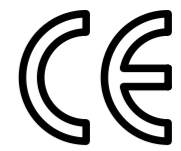
VIME INDUSTRIAL
Funo - Bologna (Italy)
www.vimeindustrial.com
The Quality is Transparent

DATE	09/06/2010
SCALE	1:4
WEIGHTS	
Winch (without oil)	60 Kgs.
Roller fairlead	4,4 Kgs.
Heavy-duty roller fairlead	----
Rope tensioner	2,2 Kgs.

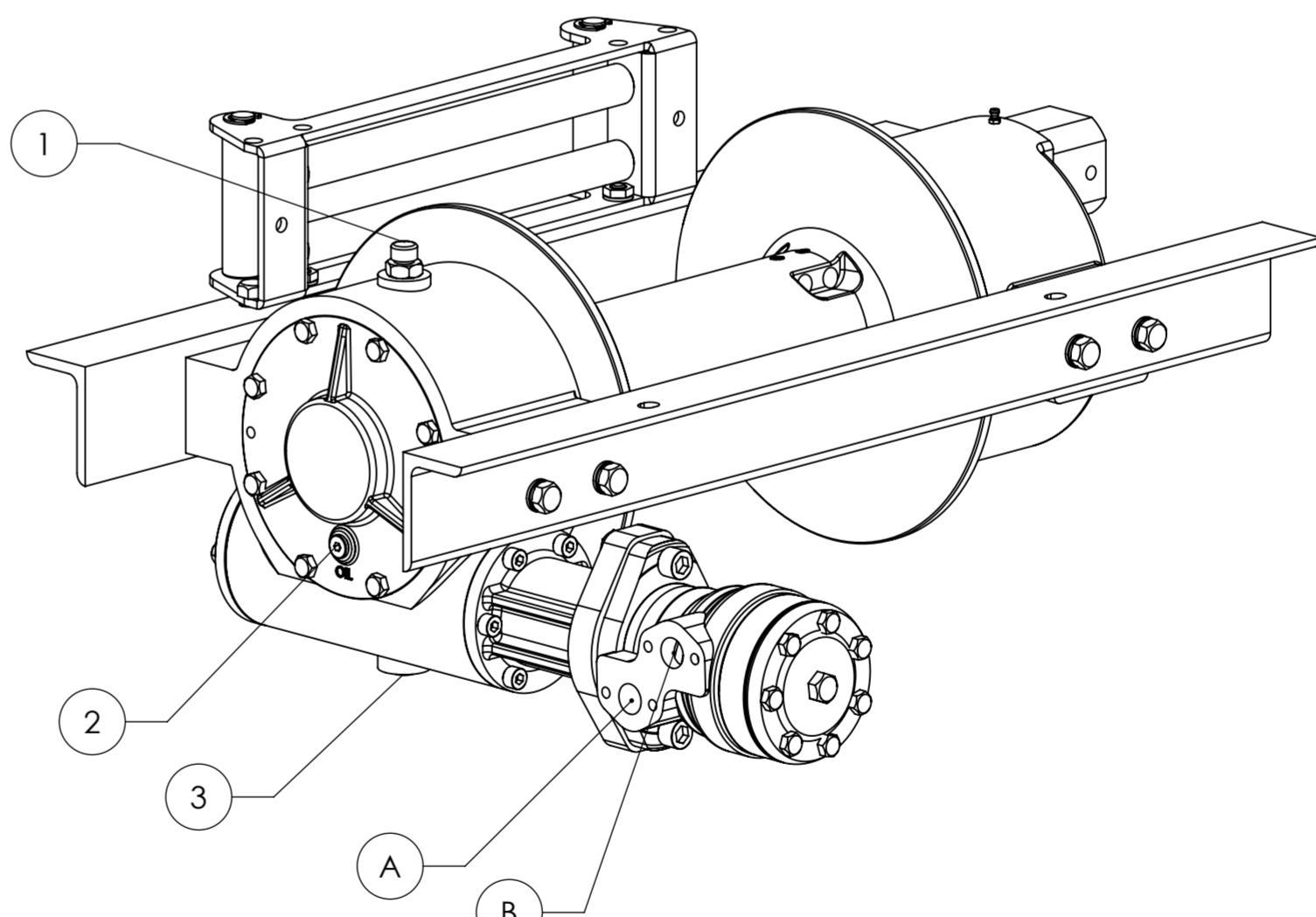
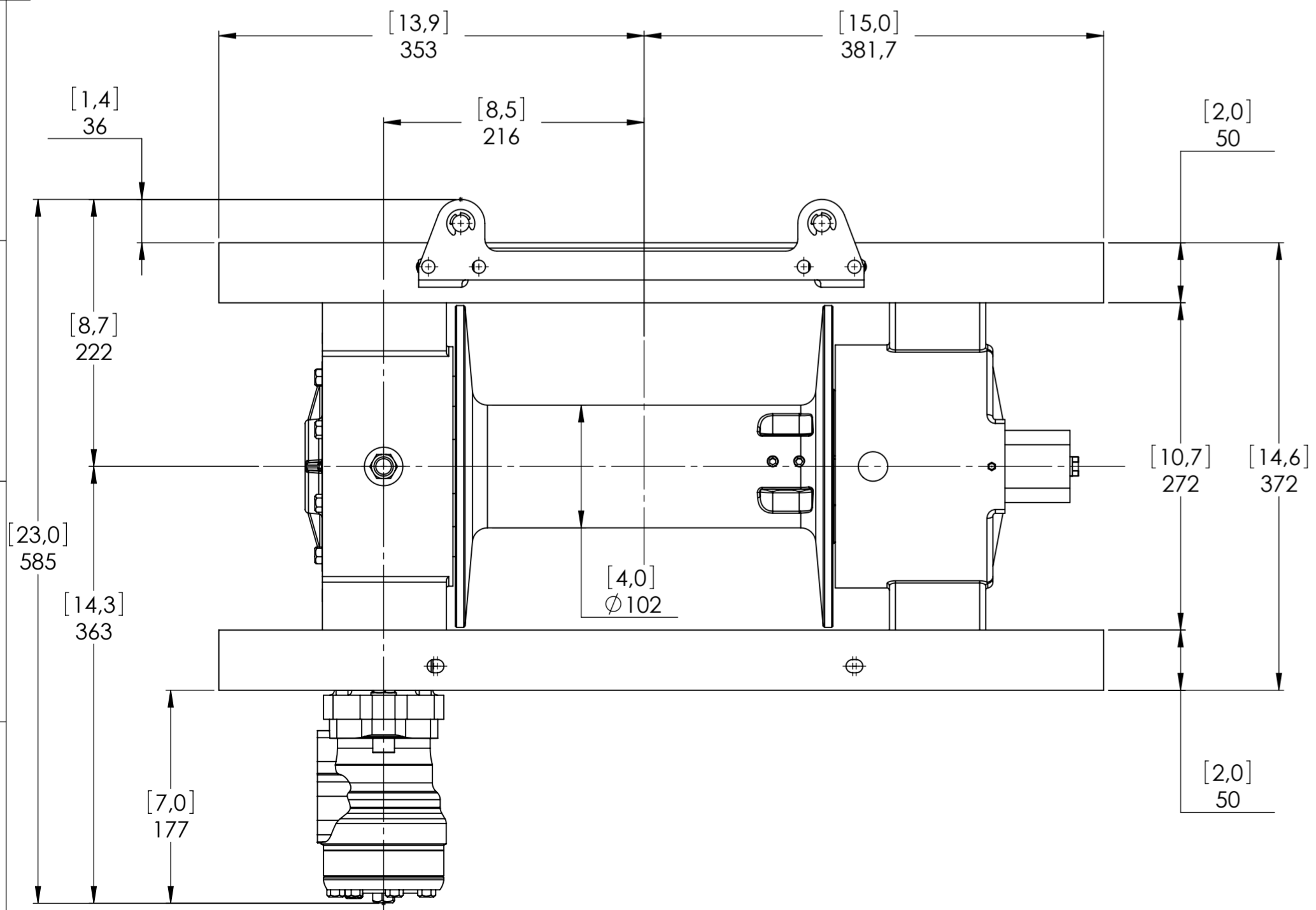
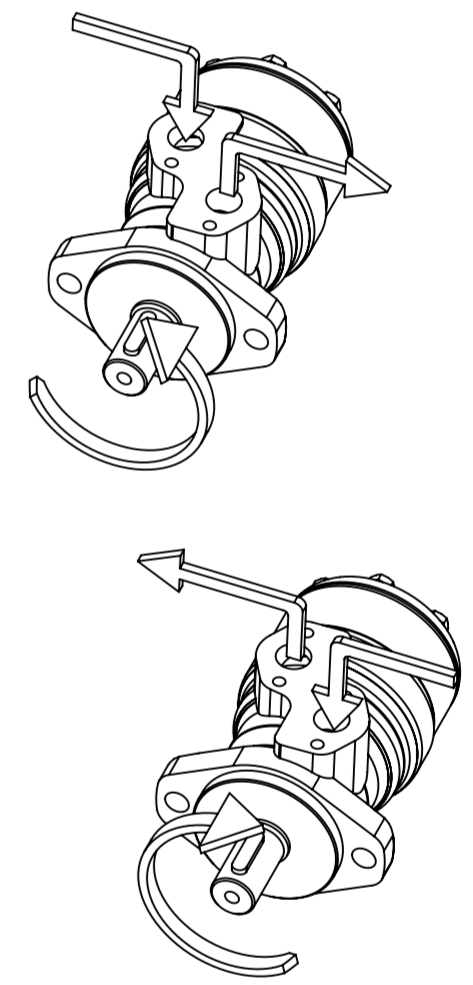
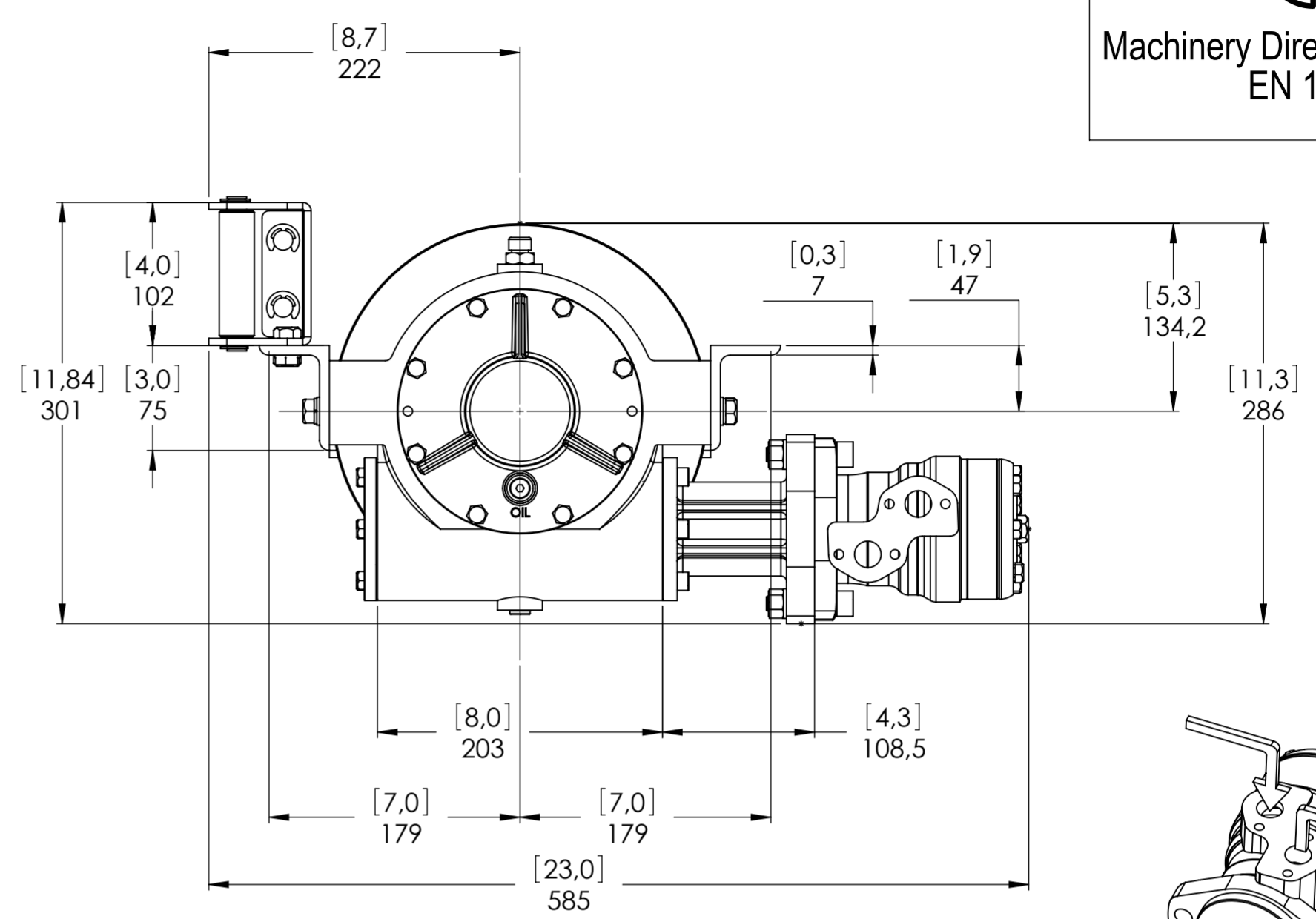
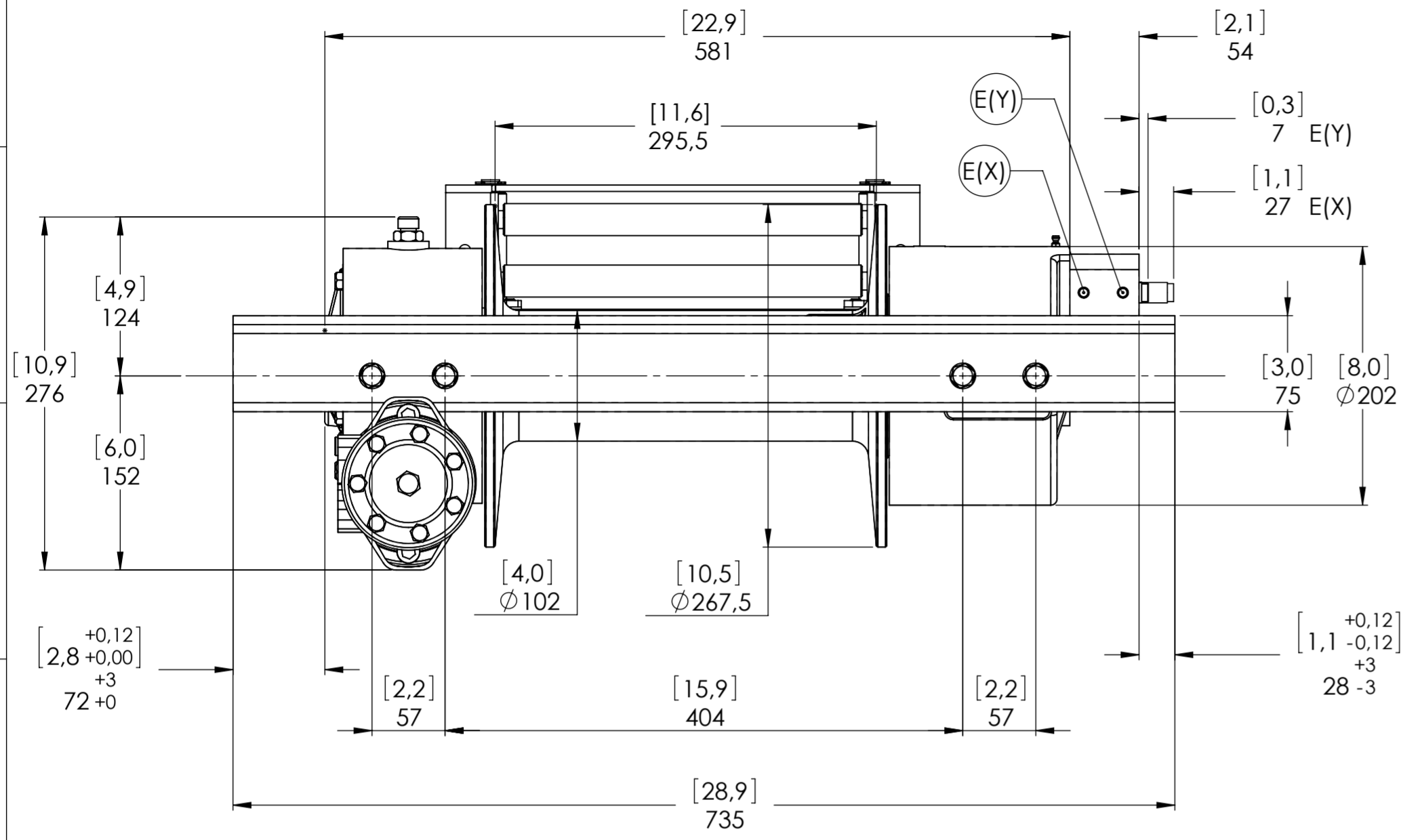
CONNECTIONS	
A	1/2"G
B	1/2"G
C	-----
E (X) DISENGAGED	-----
E (Y) ENGAGED	-----

PLUGS	
1.Fill	3/8"G
2.Level	1/4"G
3.Drain	3/8"G

CODE	RSH45D125G
------	------------



Machinery Directive 2006/42/CE
EN 14492-1



CONNECTIONS	
A	1/2" G
B	1/2" G
C	-----
E (X) DISENGAGED	1/8" G
E (Y) ENGAGED	1/8" G

PLUGS	
1.Fill	3/8" G
2.Level	1/4" G
3.Drain	3/8" G

SCALE 1:4

WEIGHTS	
Winch (without oil)	60 Kgs.
Roller fairlead	4,4 Kgs.
Heavy-duty roller fairlead	----
Rope tensioner	2,2 Kgs.

WINCH MODEL	RSH	WINCH GROUP	WORM GEAR
Pulling capacity (Kgs.)	4500	Date	Modification
Max.Oil flow	60 Lt./Min.		
Speed Line - first layer	5,3 Mt./Min.		
Speed Line - top layer	9,4 Mt./Min.		

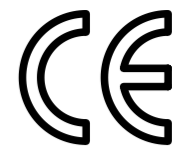
DANGEROUS: Do not use winch to lift support or transport personnel.

Gear ratio	29:1
Orbital hydr. motor	125 cc
Working pressure	150 bar
Drum size	295,5 mm
Drum clutch	Air-operated

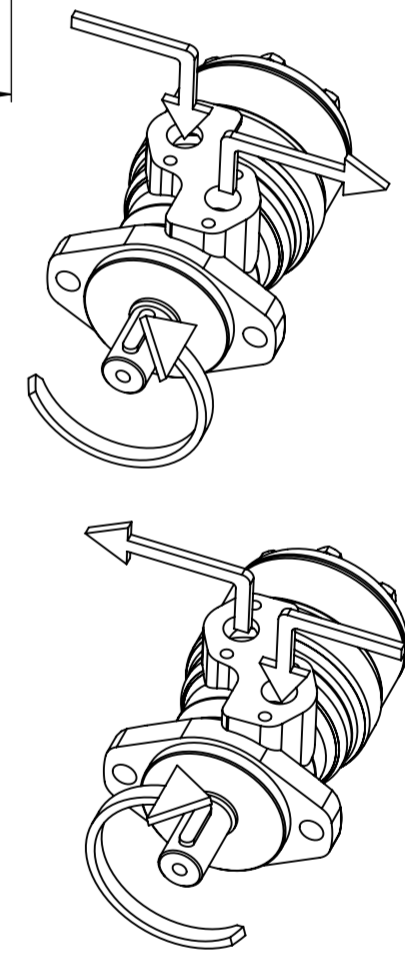
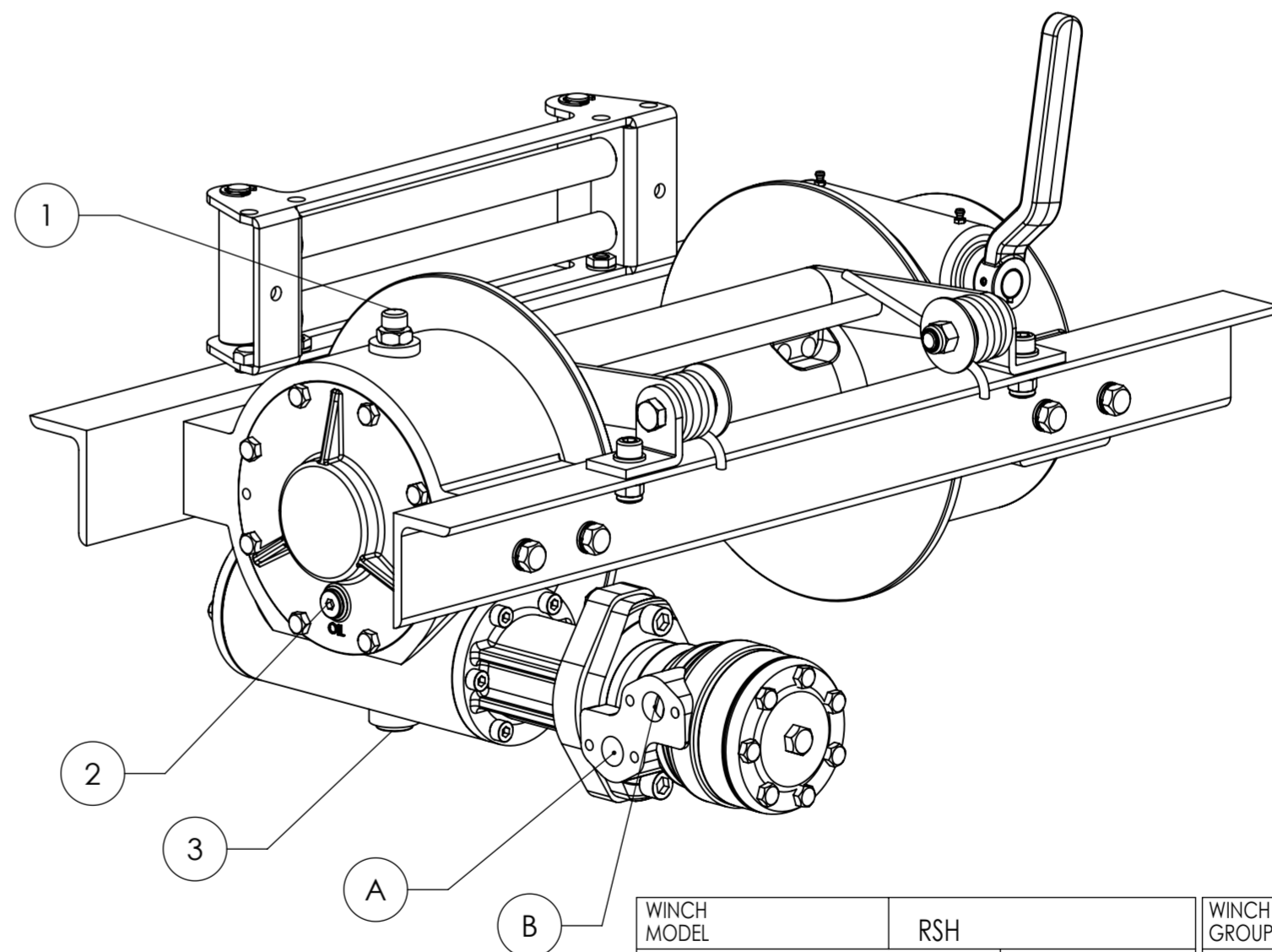
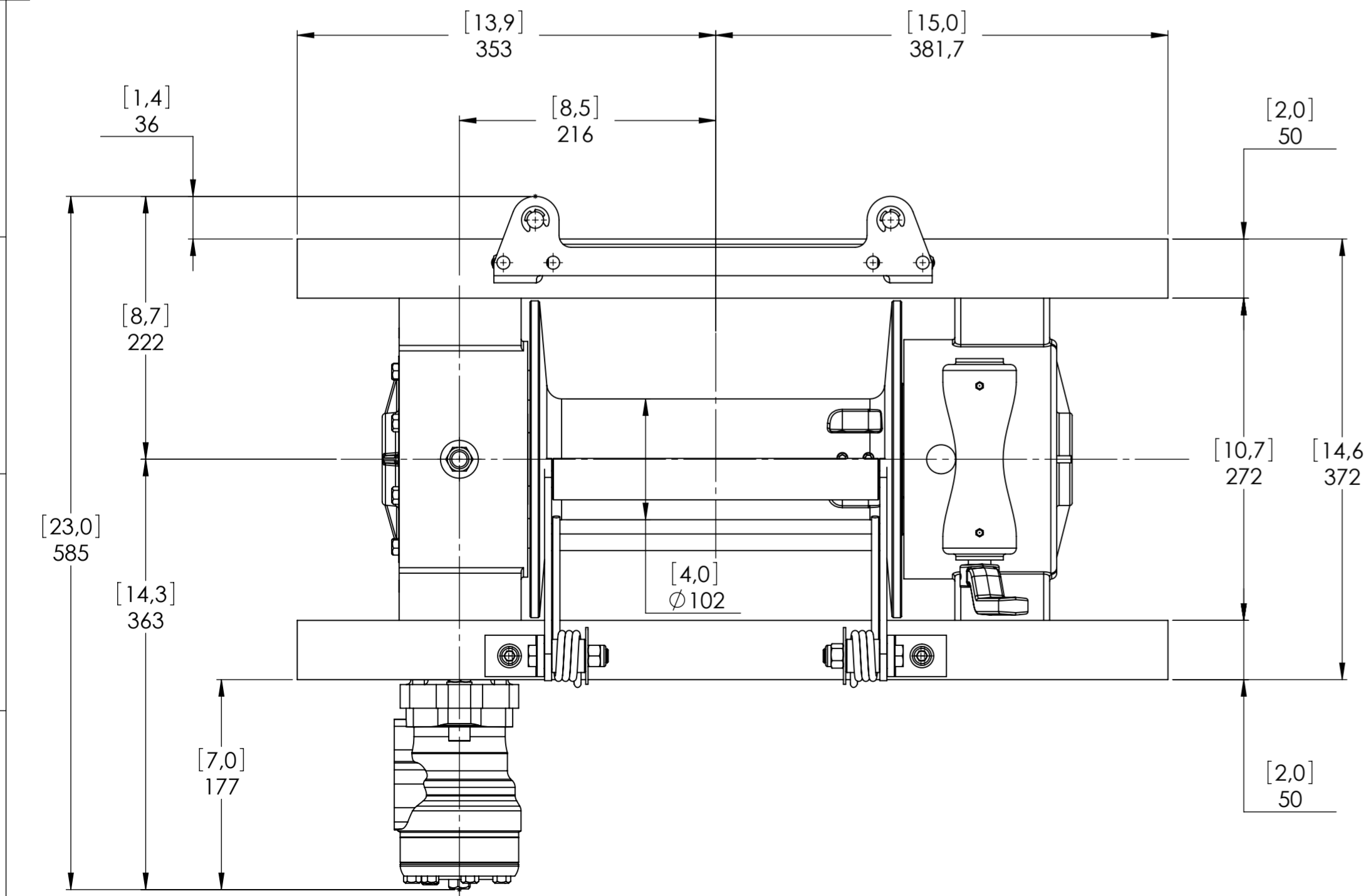
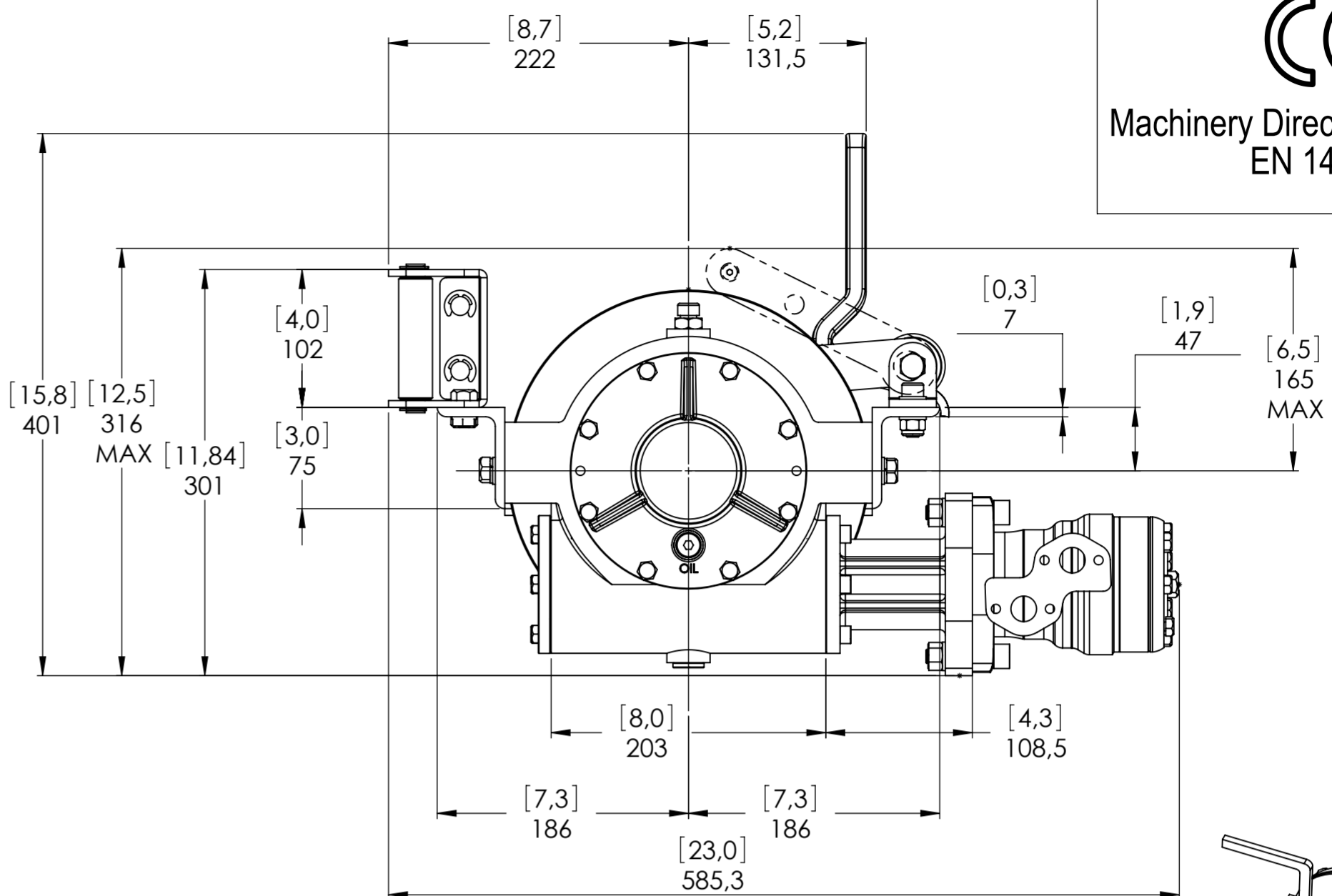
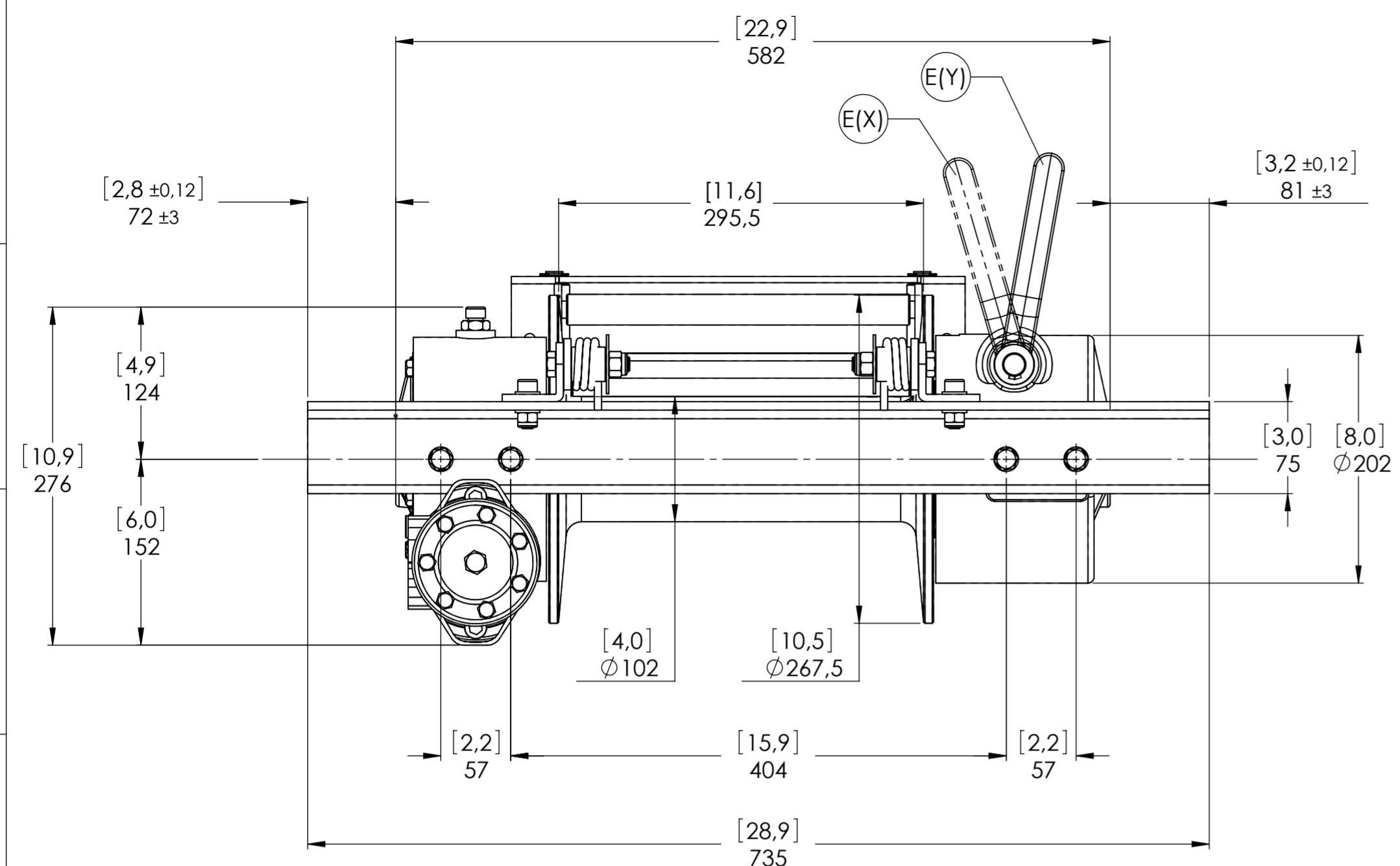
VIME INDUSTRIAL
Funo - Bologna (Italy)
www.vimeindustrial.com
The Quality is Transparent

VIME Industrial reserves the right to improve its products through changes in designed or materials as it may seem desirable without notice.
DATE 09/06/2010

CODE RSH45D125AG



Machinery Directive 2006/42/CE
EN 14492-1



WINCH MODEL	RSH	WINCH GROUP	WORM GEAR
Pulling capacity (Kgs.)	4500	Date	Modification
Max.Oil flow	60 Lt./Min.	DANGEROUS: Do not use winch to lift support or transport personnel.	
Speed Line - first layer	5,3 Mt./Min.		
Speed Line - top layer	9,4 Mt./Min.		

Gear ratio	29:1
Orbital hydr. motor	125 cc
Working pressure	150 bar
Drum size	295,5 mm
Drum clutch	Manual

Funo - Bologna (Italy)
www.vimeindustrial.com

The Quality is Transparent

VIME Industrial : reserves the right to improve its products through changes in designed or materials as it may seem desirable without notice

DATE 09/06/2010

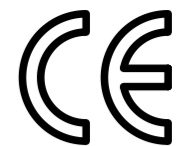
CONNECTIONS	
A	1/2"G
B	1/2"G
C	-----
E (X) DISENGAGED	-----
E (Y) ENGAGED	-----

PLUGS	
1.Fill	3/8"G
2.Level	1/4"G
3.Drain	3/8"G

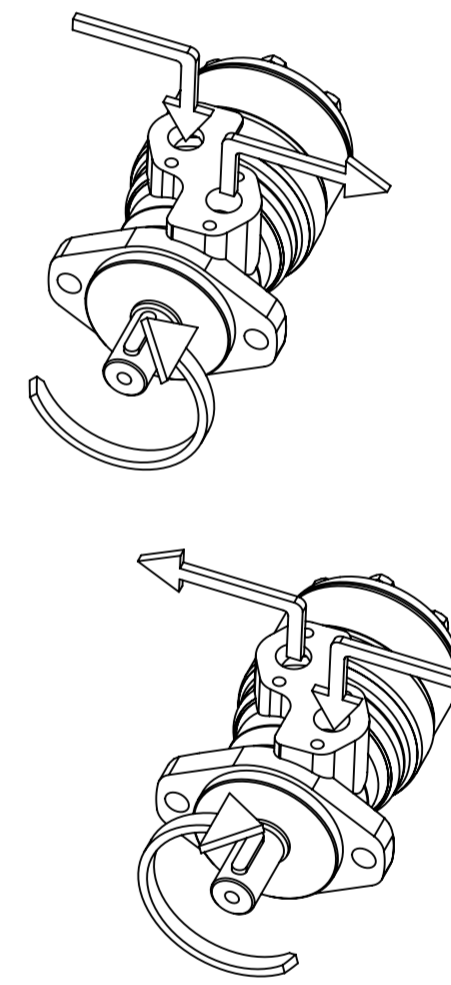
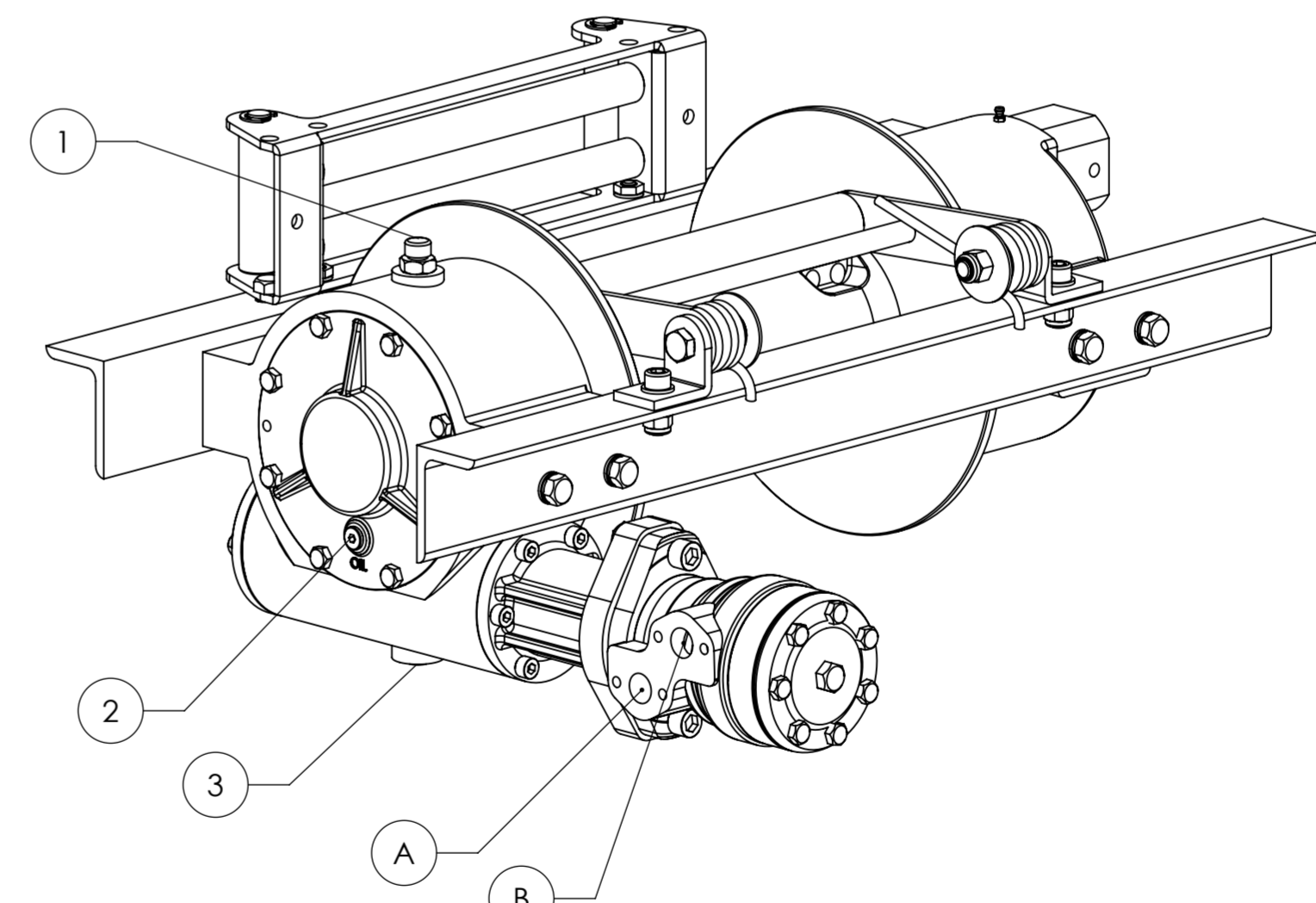
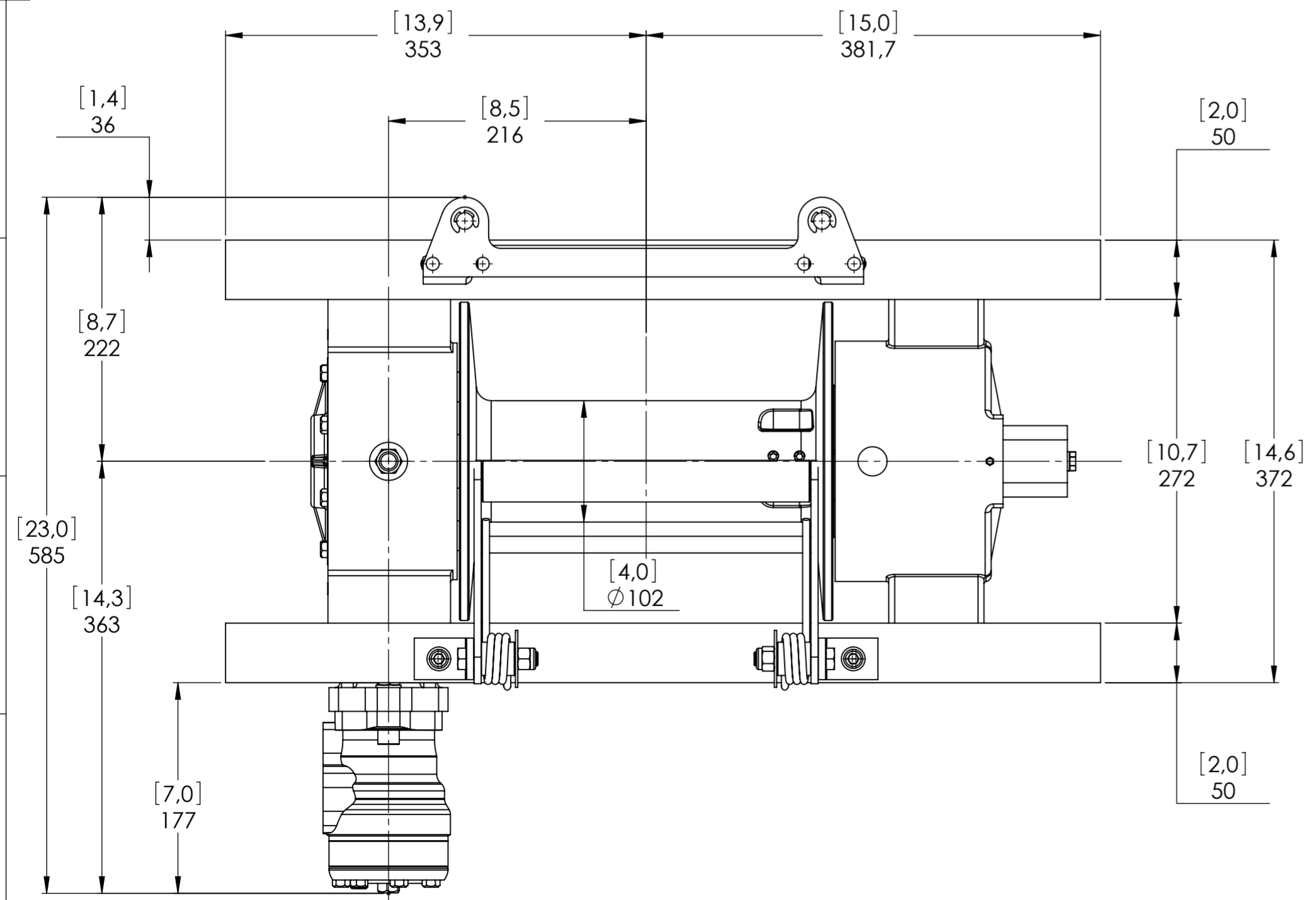
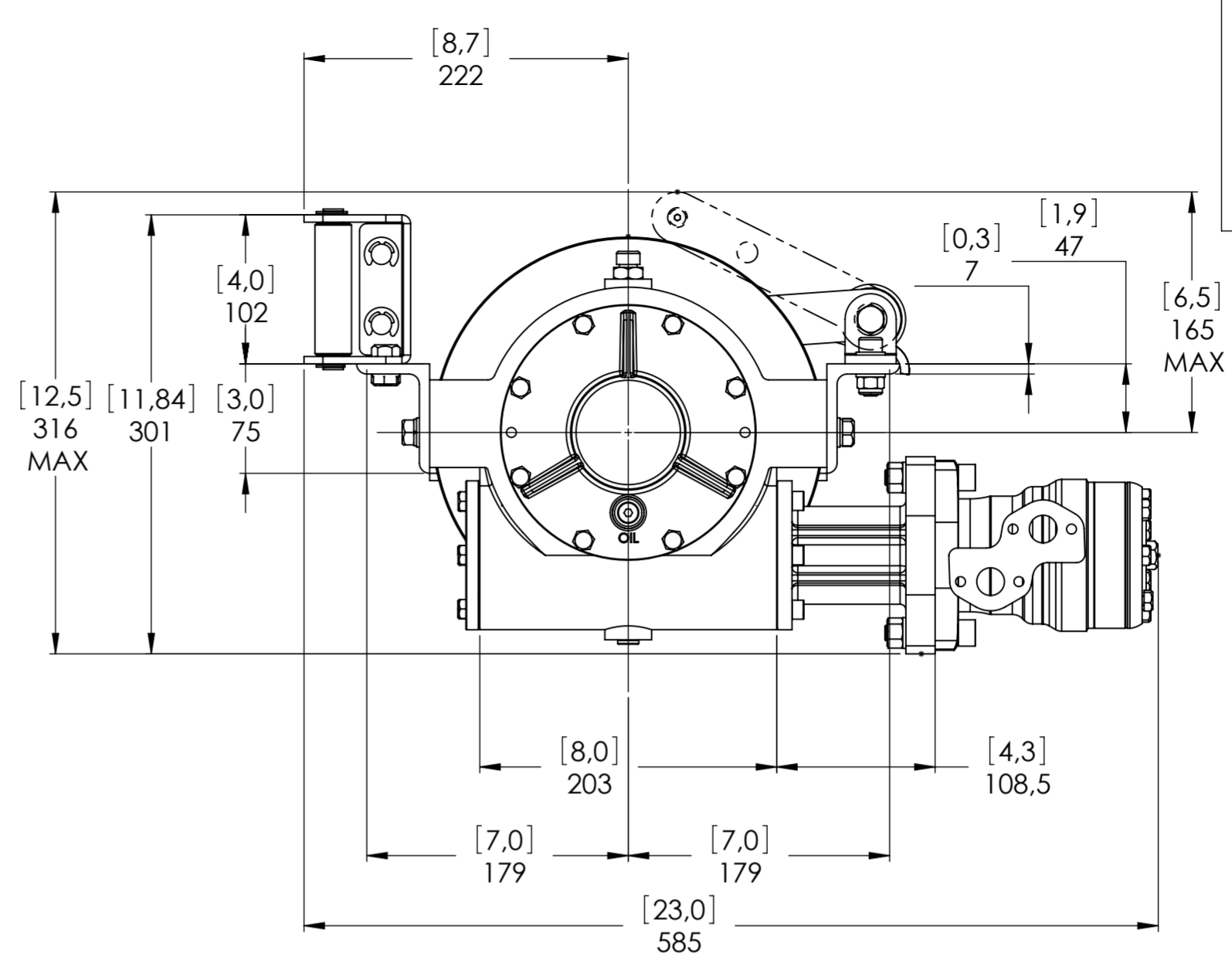
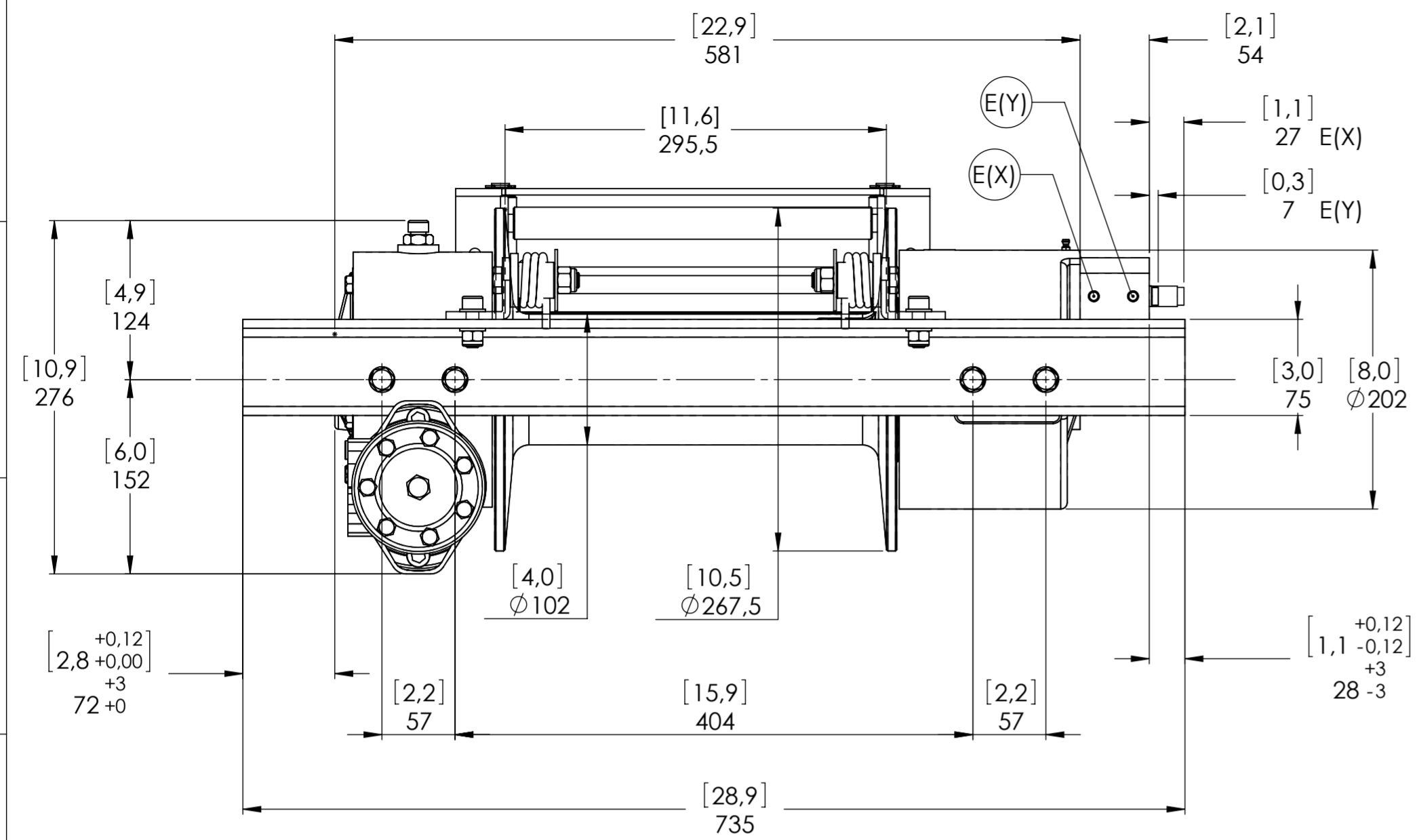
SCALE	1:4
-------	-----

WEIGHTS	
Winch (without oil)	60 Kgs.
Roller fairlead	4,4 Kgs.
Heavy-duty roller fairlead	-----
Rope tensioner	2,2 Kgs.

CODE	RSH45D125GP
------	-------------



Machinery Directive 2006/42/CE
EN 14492-1



CONNECTIONS	
A	1/2" G
B	1/2" G
C	-----
E (X) DISENGAGED	1/8" G
E (Y) ENGAGED	1/8" G

PLUGS	
1.Fill	3/8" G
2.Level	1/4" G
3.Drain	3/8" G

SCALE 1:4

WEIGHTS	
Winch (without oil)	60 Kgs.
Roller fairlead	4,4 Kgs.
Heavy-duty roller fairlead	-----
Rope tensioner	2,2 Kgs.

CODE RSH45D125AGP

WINCH MODEL	RSH	WINCH GROUP	WORM GEAR
Pulling capacity (Kgs.)	4500	Date	Modification
Max.Oil flow	60 Lt./Min.		
Speed Line - first layer	5,3 Mt./Min.	DANGEROUS: Do not use winch to lift support or transport personnel.	
Speed Line - top layer	9,4 Mt./Min.		

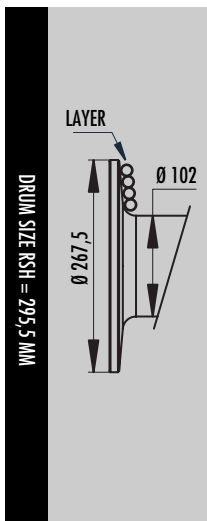
Gear ratio	29:1
Orbital hydr. motor	125 cc
Working pressure	150 bar
Drum size	295,5 mm
Drum clutch	Air-operated
Funo - Bologna (Italy) www.vimeindustrial.com	
<i>The Quality is Transparent</i>	
VIME Industrial : reserves the right to improve its products through changes in designed or materials as it may seem desirable without notice	
DATE	09/06/2010

1.4.6 RSH 4500 WINCH TECHNICAL DATA

RATIO	WIRE ROPE SIZE [MM]	LAYER	LINE PULL
			[KGS.]
29:1	11*	1	4.500
		2	3.770
		3	3.240
		4	2.840
		5	2.530

OIL SUPPLY [LT/MIN]	DRUM REVOLUTION [RPM]	LINE SPEED [MT/MIN]				
		1	2	3	4	5
30	7,3	2,6	3,1	3,6	4,1	4,6
40	9,7	3,4	4,1	4,8	5,5	6,1
60	14,9	5,3	6,3	7,3	8,4	9,4

WIRE ROPE MIN. BREAKING LOAD EN 14492-1 [KGS.]	9.000
--	-------



LAYER	DRUM DIAMETER		WIRE ROPE ON LAYER [MT]		WIRE ROPE QUANTITY [MT]	
	Ø MM	-	11 MM	00 MM	11 MM	00 MM
8	267	-	21,7	-	123,5	-
7	245	-	19,9	-	101,8	-
6	223	-	18,1	-	81,9	-
5	201	-	16,3	-	63,8	-
4	179	-	14,5	-	47,5	-
3	157	-	12,8	-	32,9	-
2	135	-	11,0	-	20,2	-
1	113	-	9,2	-	9,2	-
0	102	-	-	-	-	-

WIRE ROPE CAPACITY [MT]		MAX. WIRE ROPE CAPACITY EN 14492-1 [MT]		MAX. WIRE ROPE CAPACITY [MT]	
11 MM	00 MM	11 MM	00 MM	11 MM	00 MM
30	00	81**	00	123	00

DESCRIPTION	WEIGHTS
	[KG]
WINCH (WITHOUT CABLE)	60
ACCESSORY : ROLLER FAIRLEAD	9,6
ACCESSORY : CABLE TENSIONER	2,2

NOTES

Specifications are subject to change without notification and without incurring obligation. Specifications in this publication are theoretical and may vary depending on hydraulic system, environment, etc.

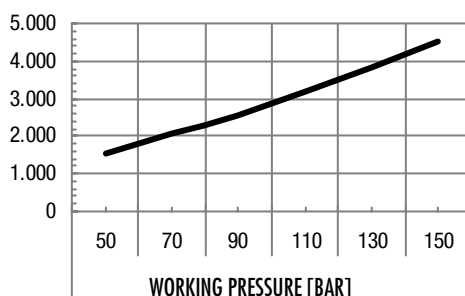
NOTES

*Wire rope size must be respected. Recommended wire rope min. tensile strength 2160 N/mm².
Wire rope minimum breaking load must be at least double of winch max. pulling capacity.

** Max. wire rope capacity according with EN 14492-1.

1.4.7 RSH 4500 WINCH PERFORMANCE CHARTS AT THE 1ST LAYER

LINE PULL-FIRST LAYER [KG]



LINE SPEED [MT/MIN]

