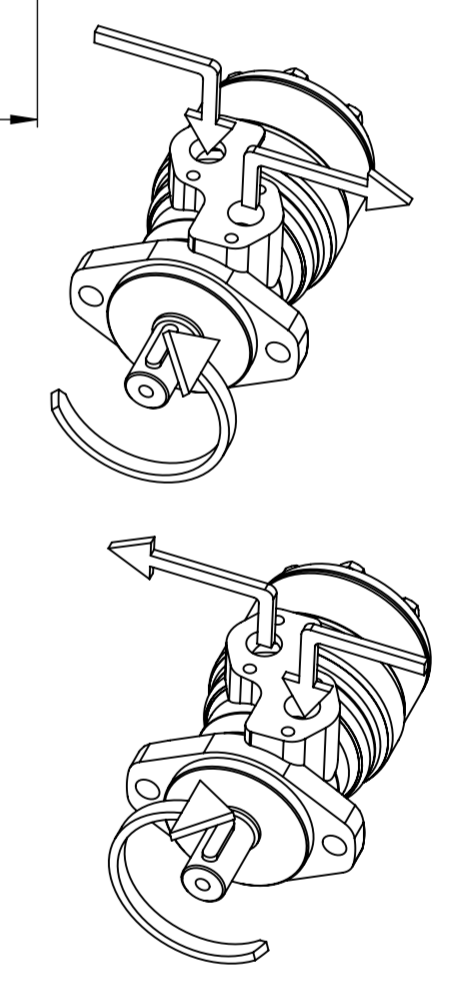
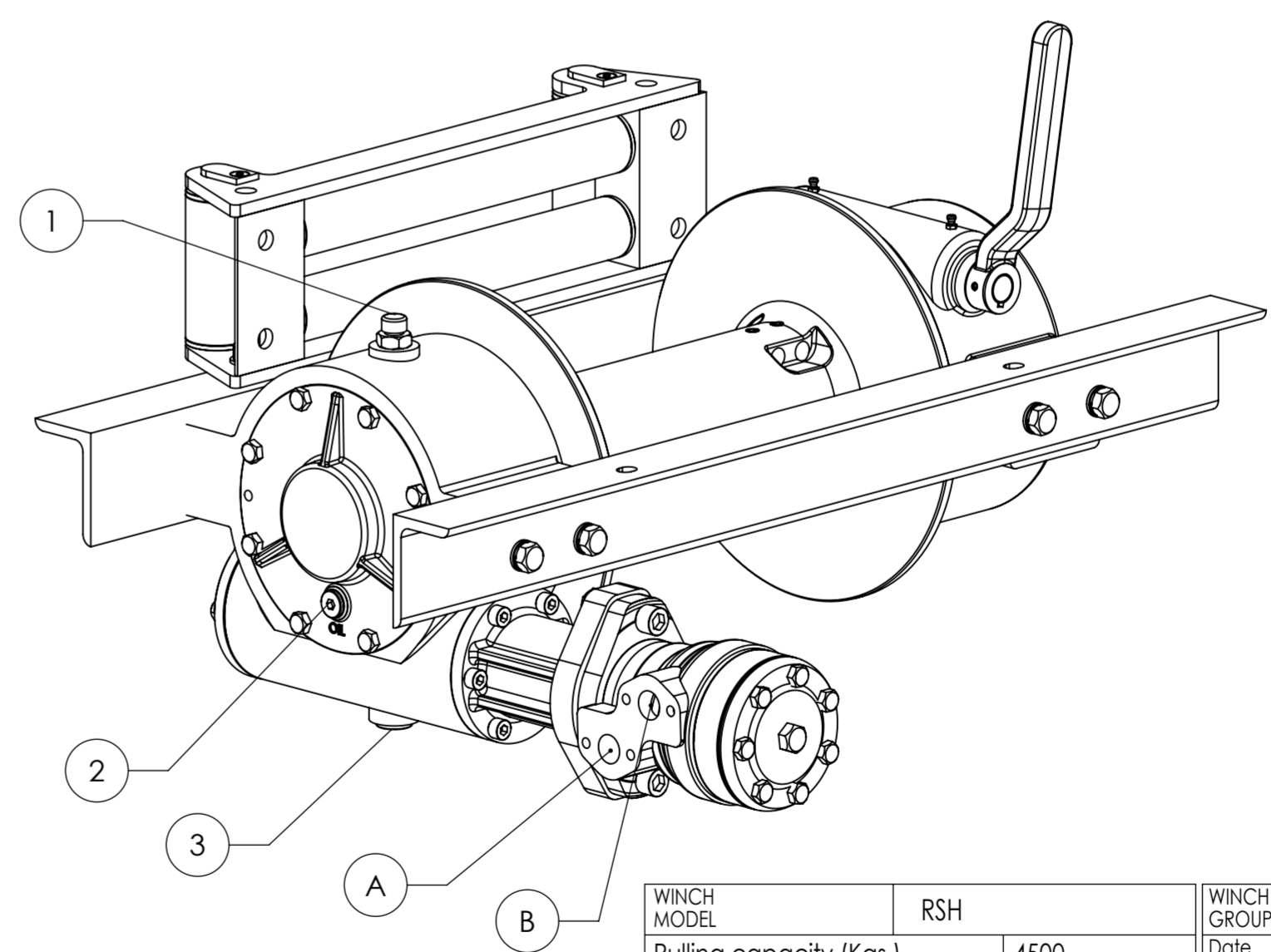
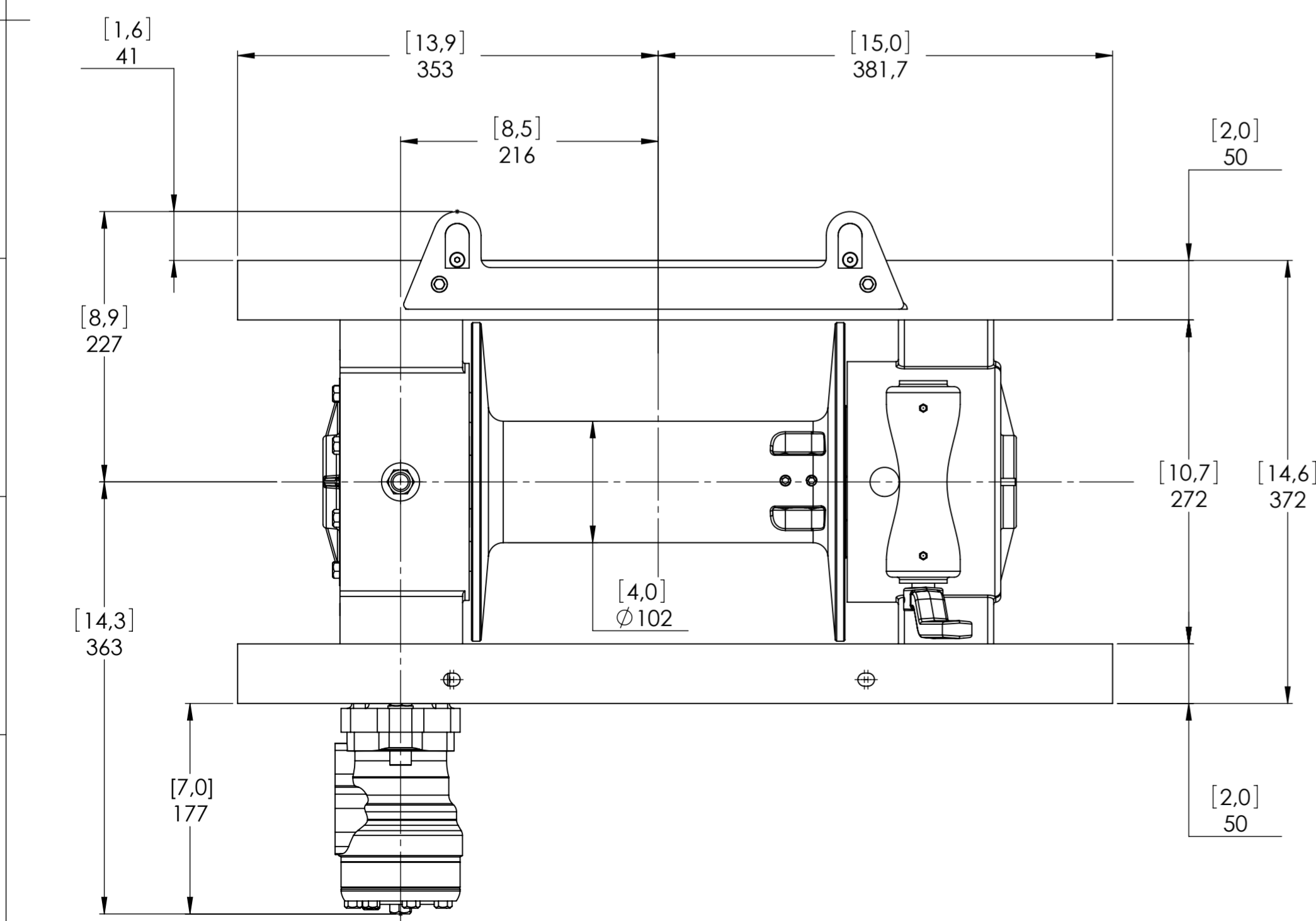
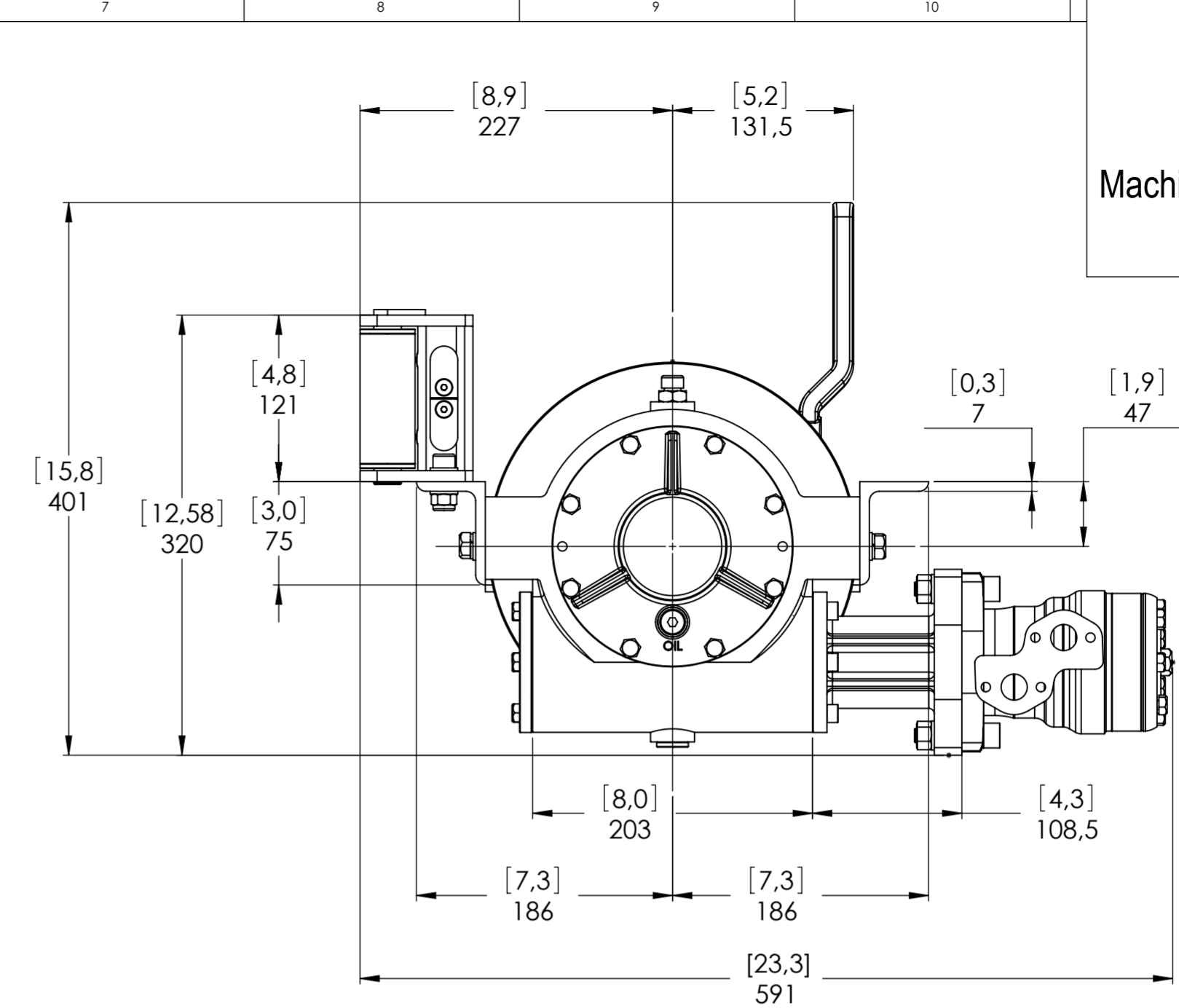
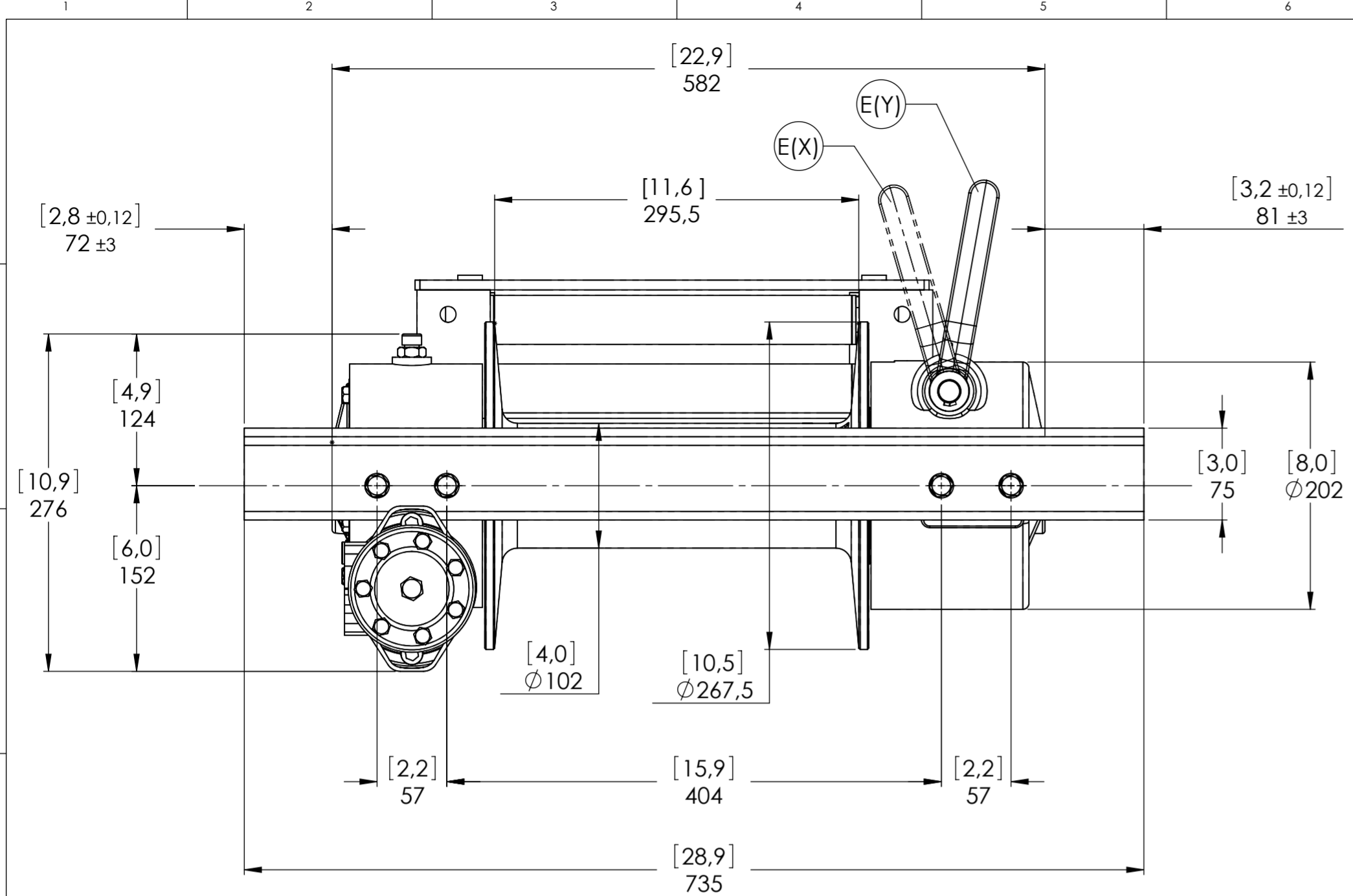


Machinery Directive 2006/42/CE
EN 14492-1



WINCH MODEL	RSH	WINCH GROUP	WORM GEAR
Pulling capacity (Kgs.)	4500	Date	Modification
Max.Oil flow	60 Lt./Min.		
Speed Line - first layer	5,3 Mt./Min.		
Speed Line - top layer	9,4 Mt./Min.		

DANGEROUS: Do not use winch to lift support or transport personnel.

WINCH MODEL	RSH	WINCH GROUP	WORM GEAR
Gear ratio	29:1		
Orbital hydr. motor	125 cc		
Working pressure	150 bar		
Drum size	295,5 mm		
Drum clutch	Manual		

VIME INDUSTRIAL
Funo - Bologna (Italy)
www.vimeindustrial.com
The Quality is Transparent

VIME Industrial reserves the right to improve its products through changes in designed or materials as it may seem desirable without notice.
DATE 09/06/2010

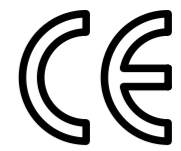
CONNECTIONS	
A	1/2"G
B	1/2"G
C	-----
E (X) DISENGAGED	-----
E (Y) ENGAGED	-----

PLUGS	
1.Fill	3/8"G
2.Level	1/4"G
3.Drain	3/8"G

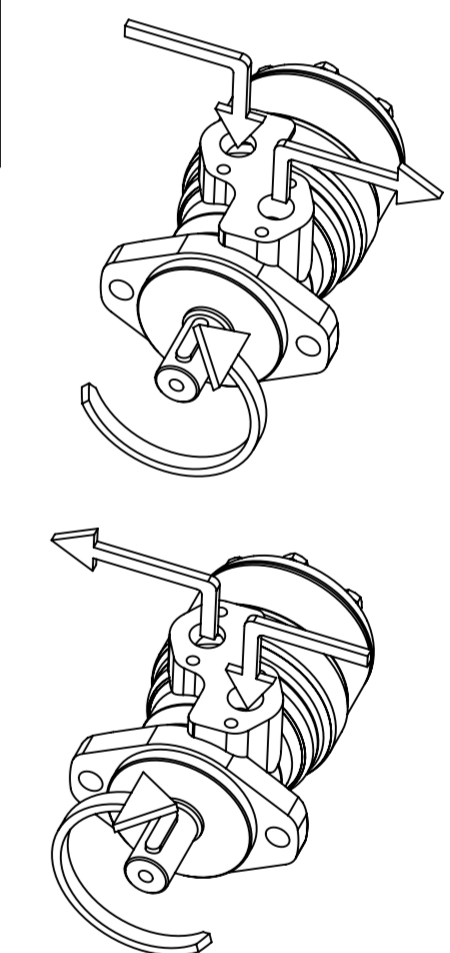
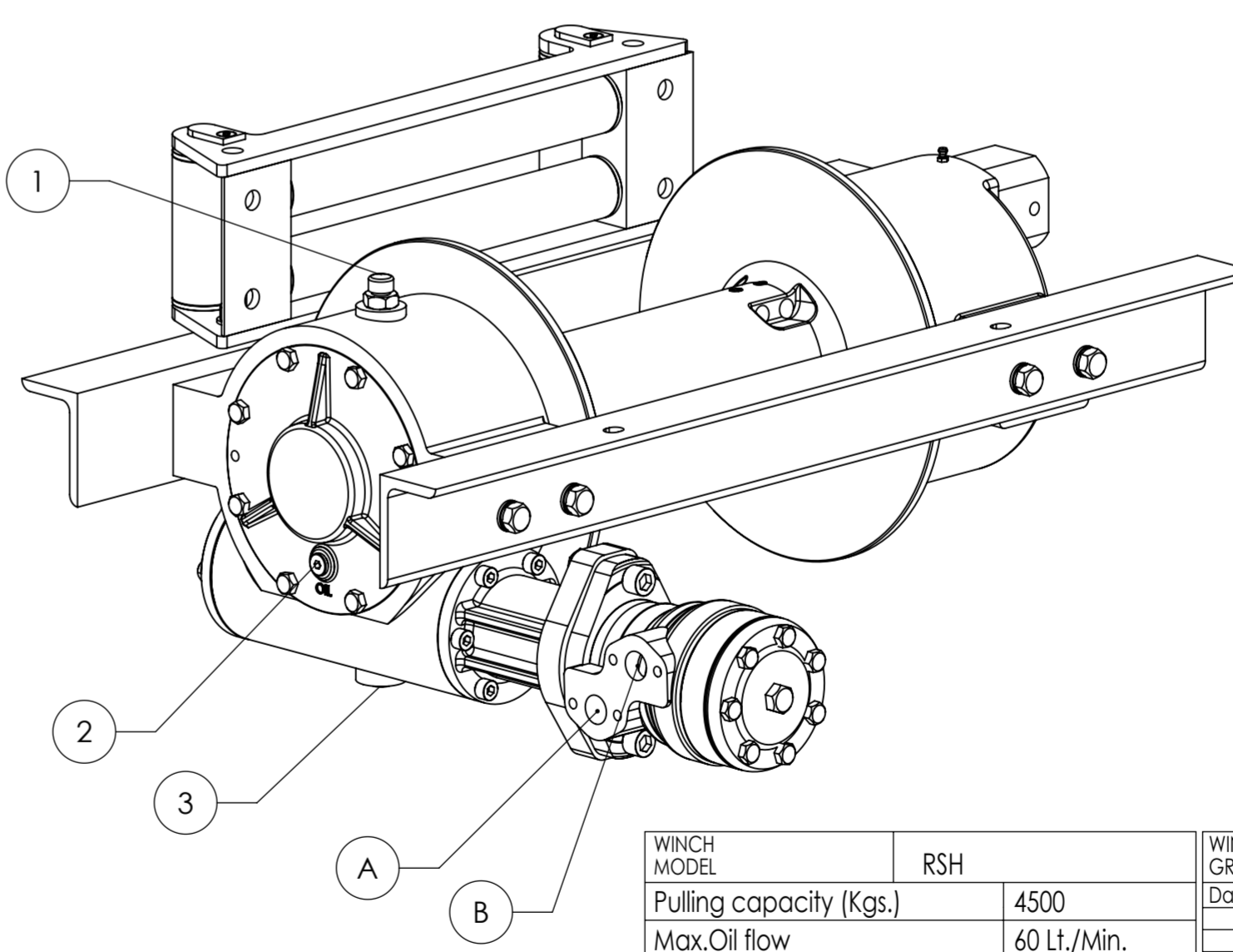
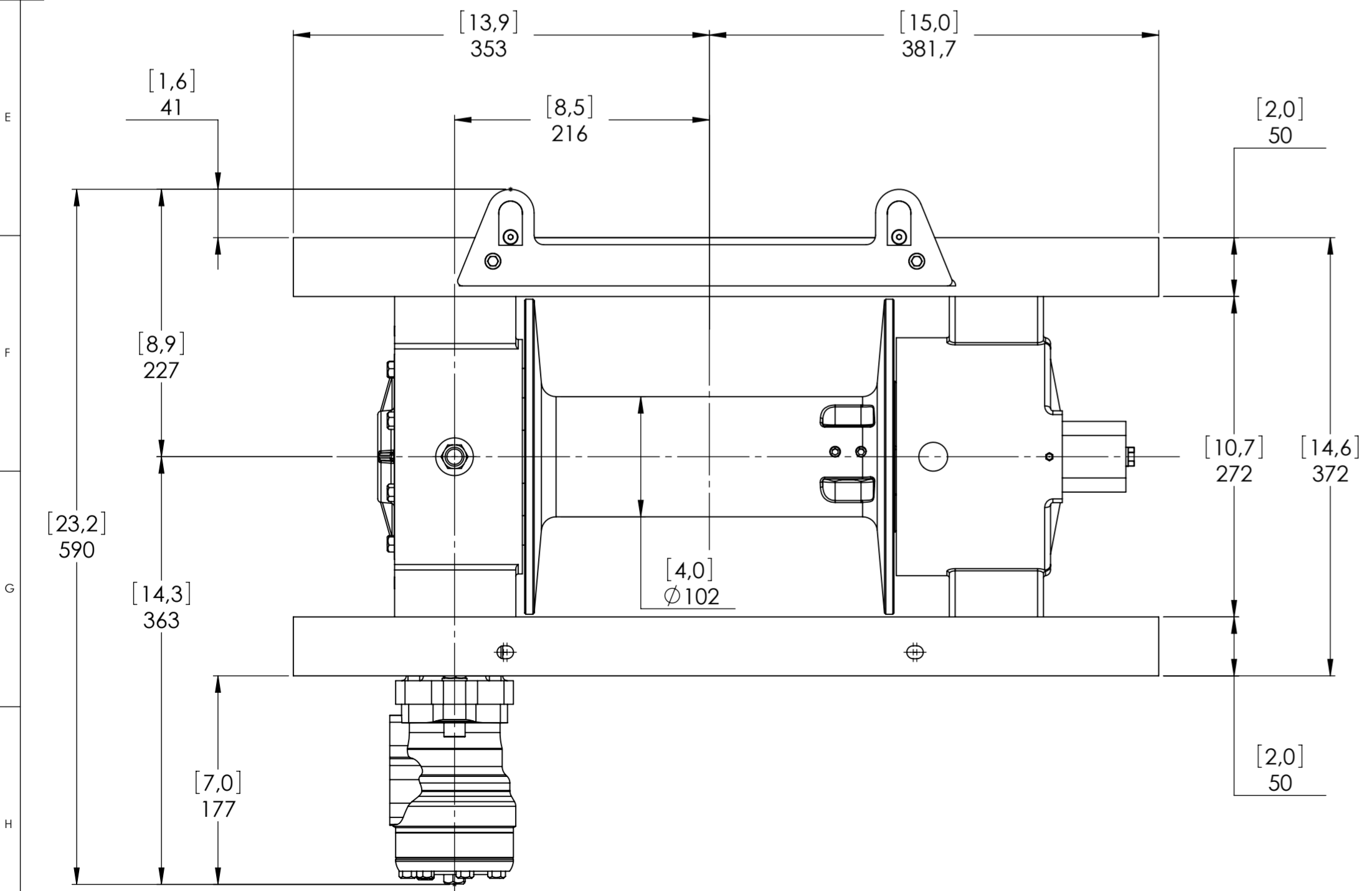
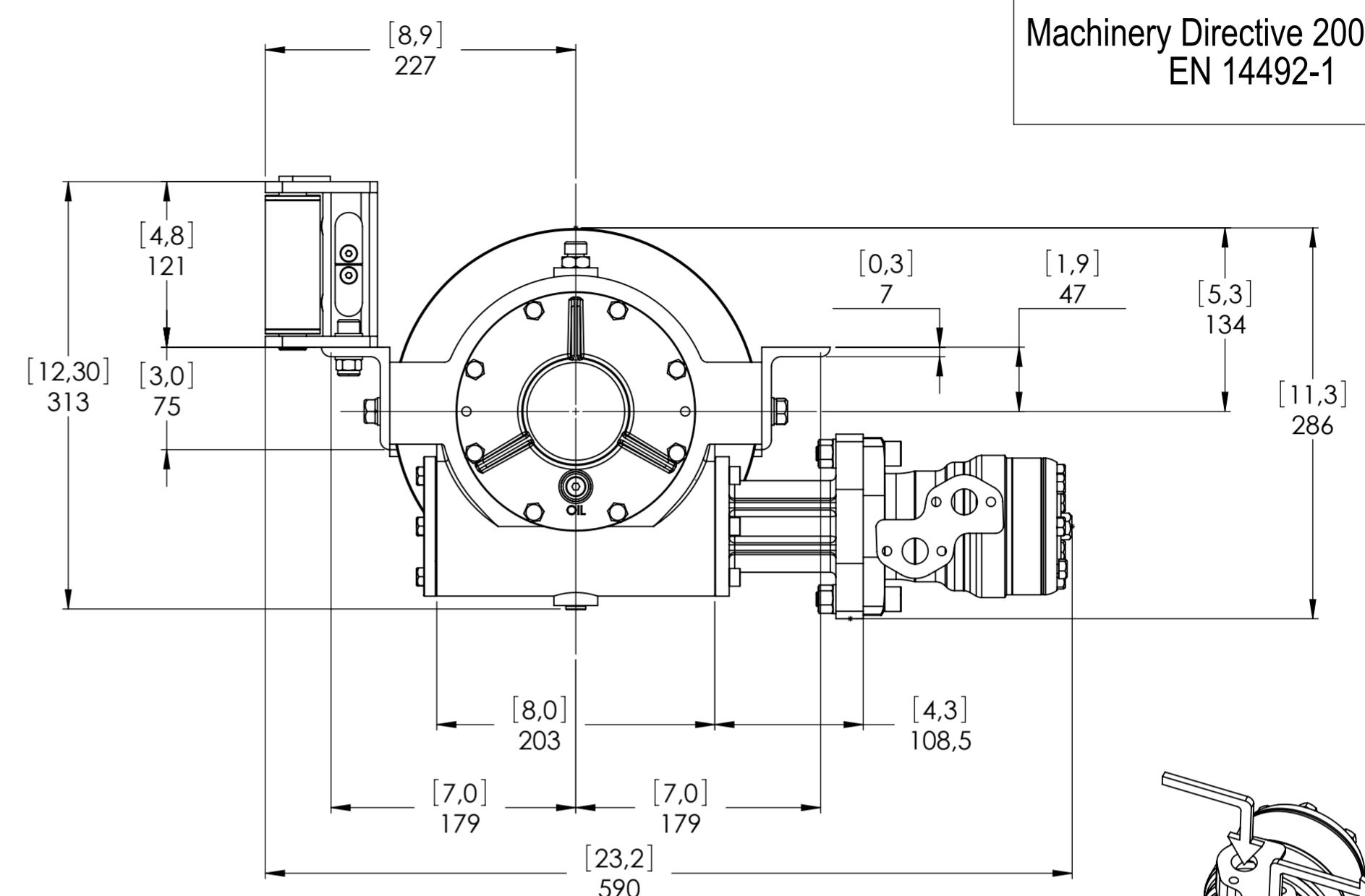
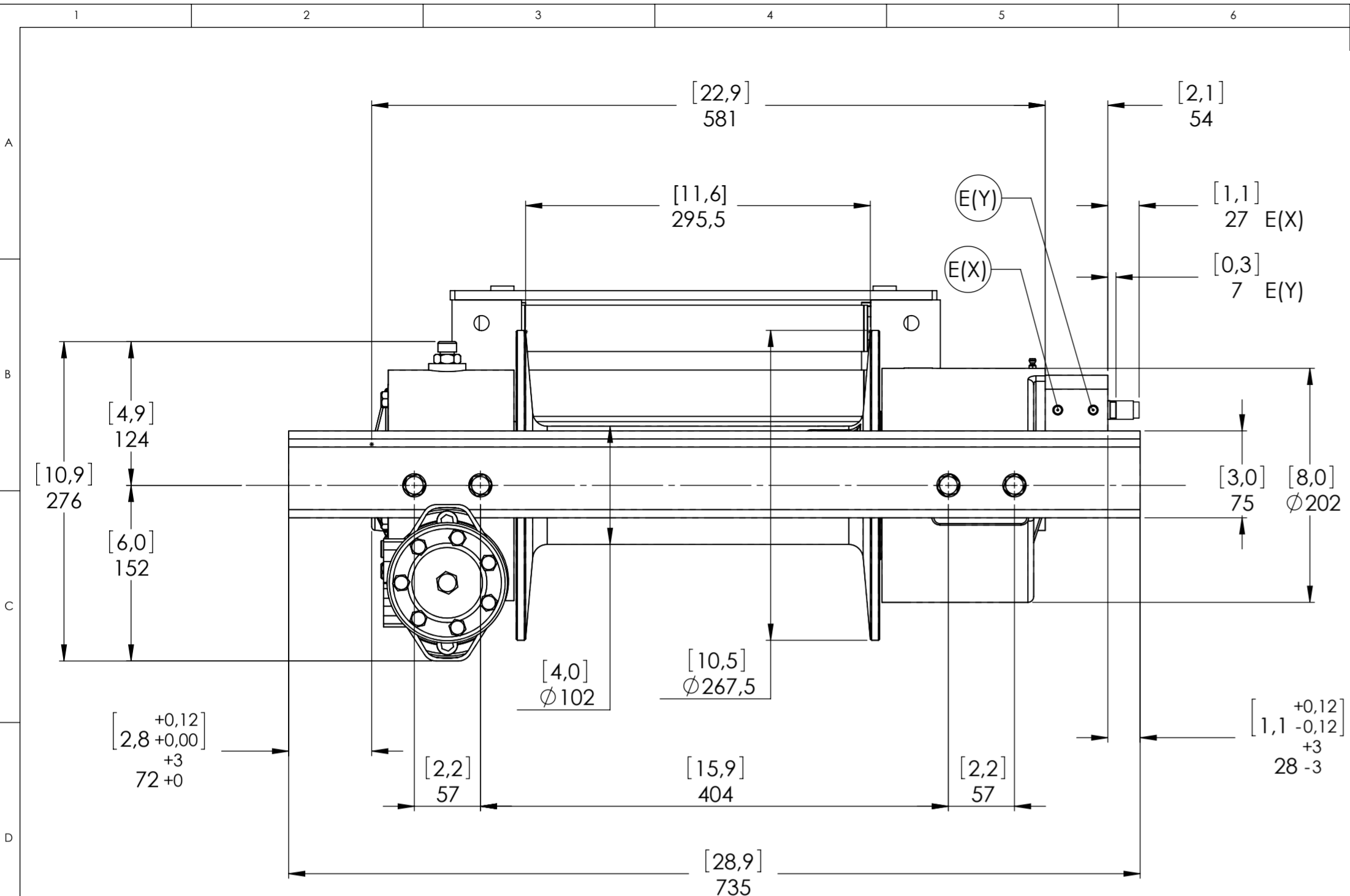
SCALE 1:4

WEIGHTS	
Winch (without oil)	60 Kgs.
Roller fairlead	-----
Heavy-duty roller fairlead	9,6 Kgs.
Rope tensioner	2,2 Kgs.

CODE RSH45D125GR



Machinery Directive 2006/42/CE
EN 14492-1



WINCH MODEL		WINCH GROUP		WORM GEAR	
RSH		Date		Modification	
Pulling capacity (Kgs.)	4500	DANGEROUS: Do not use winch to lift support or transport personnel.			
Max.Oil flow	60 Lt./Min.				
Speed Line - first layer	5,3 Mt./Min.				
Speed Line - top layer	9,4 Mt./Min.				
Gear ratio		29:1			
Orbital hydr. motor		125 cc			
Working pressure		150 bar			
Drum size		295,5 mm			
Drum clutch		Air-operated			
Funo - Bologna (Italy) www.vimeindustrial.com		DATE		12/05/2010	
The Quality is Transparent		VIME Industrial reserves the right to improve its products through changes in designed or materials as it may seem desirable without notice.			

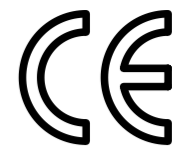
CONNECTIONS	
A	1/2"G
B	1/2"G
C	-----
E (X) DISENGAGED	1/8"G
E (Y) ENGAGED	1/8"G

PLUGS	
1.Fill	3/8"G
2.Level	1/4"G
3.Drain	3/8"G

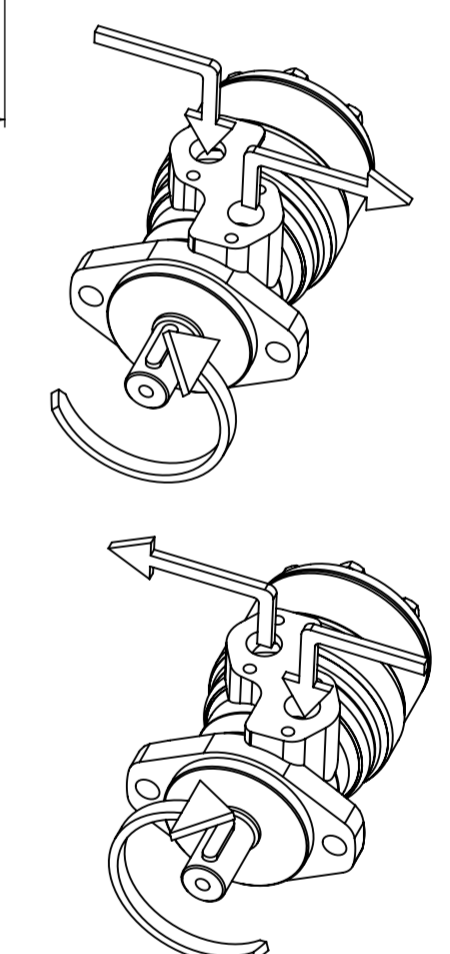
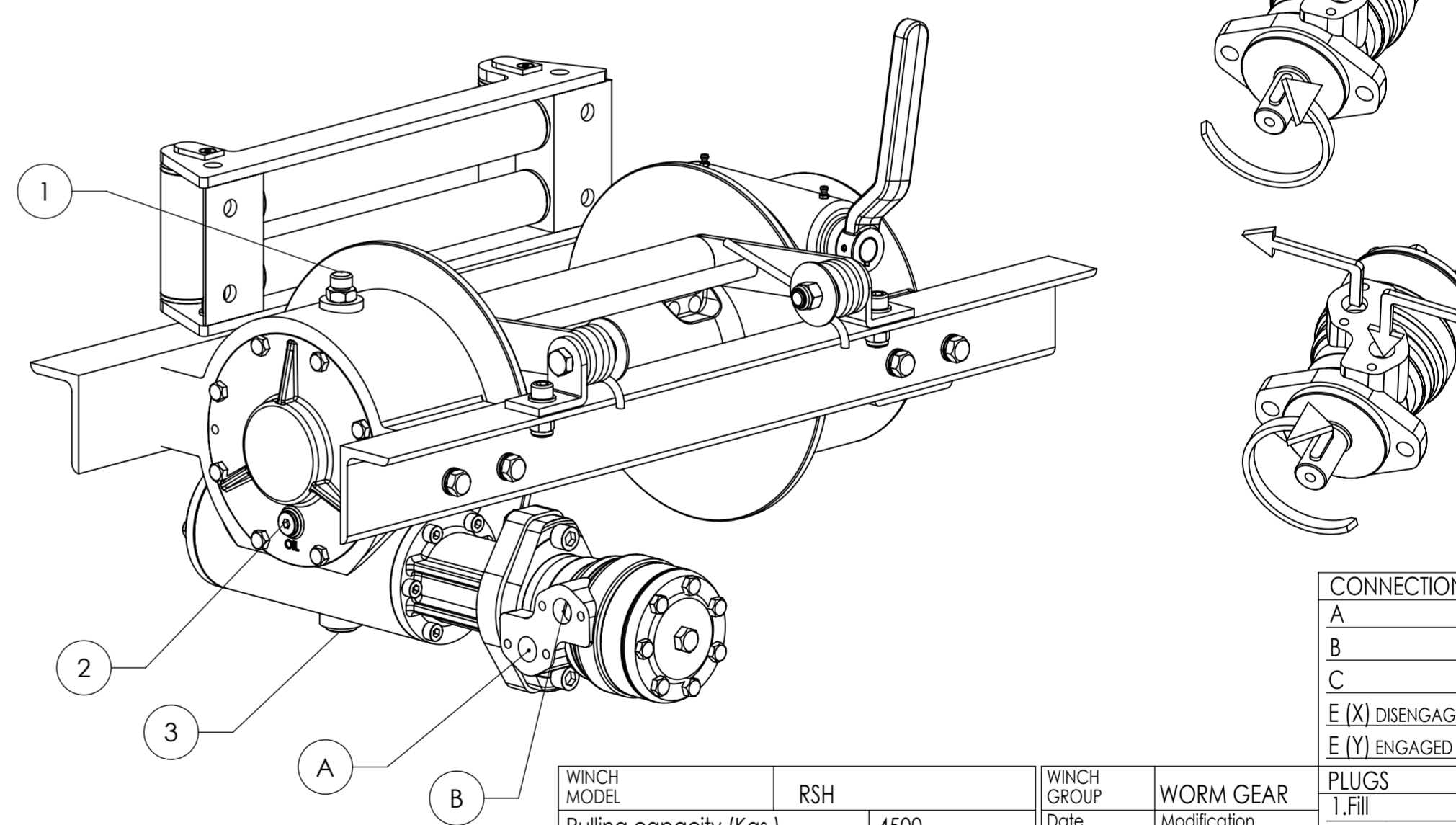
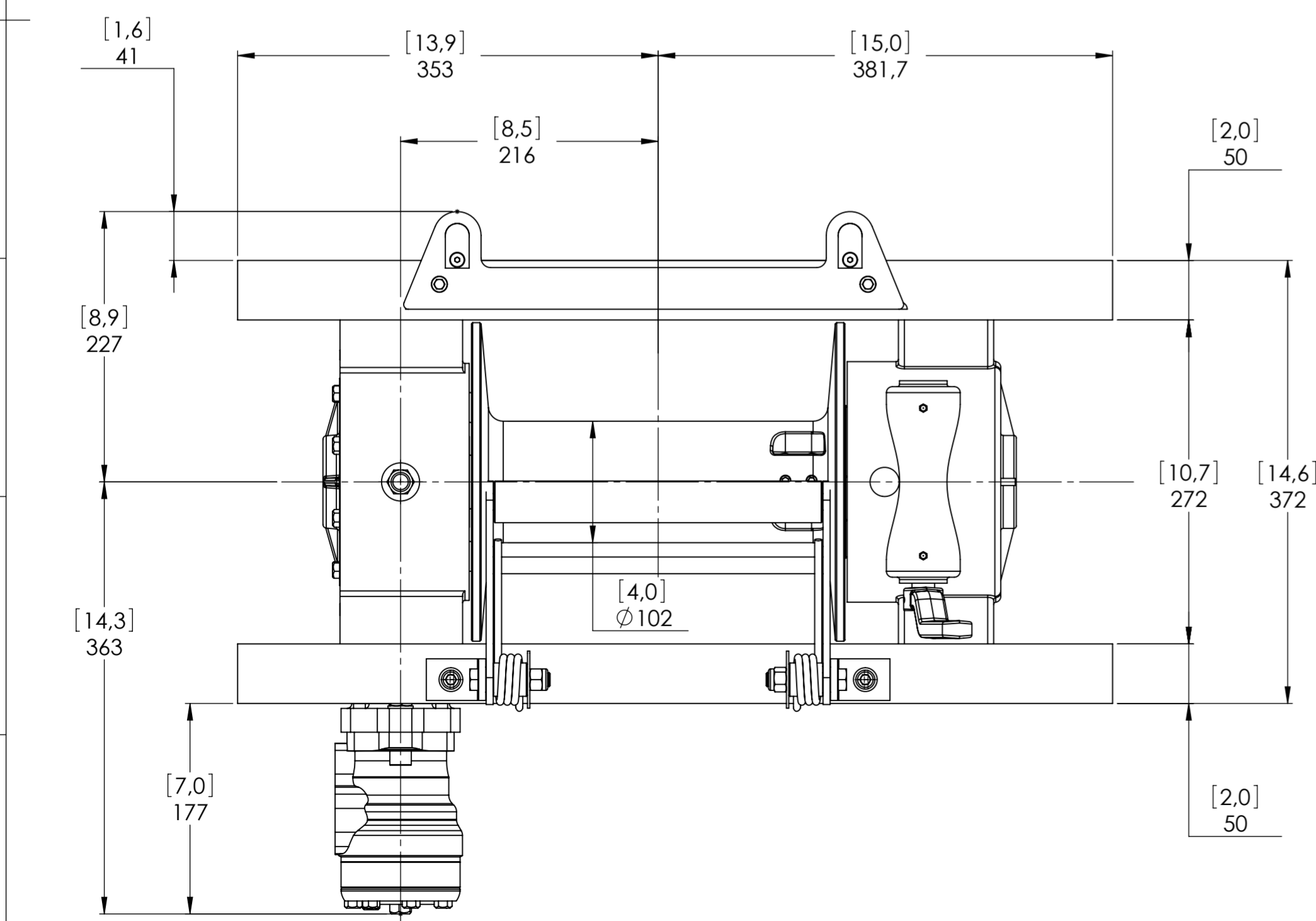
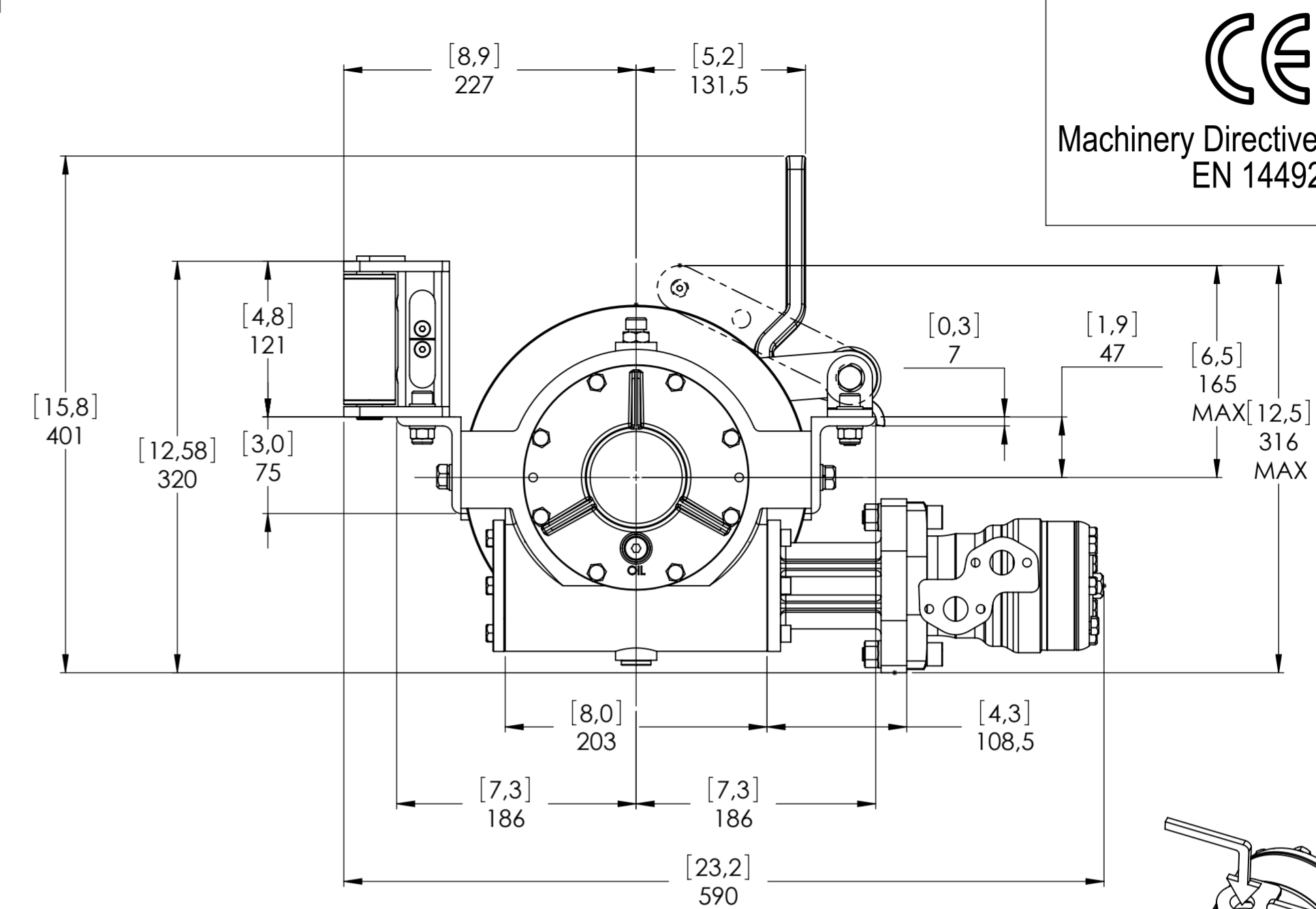
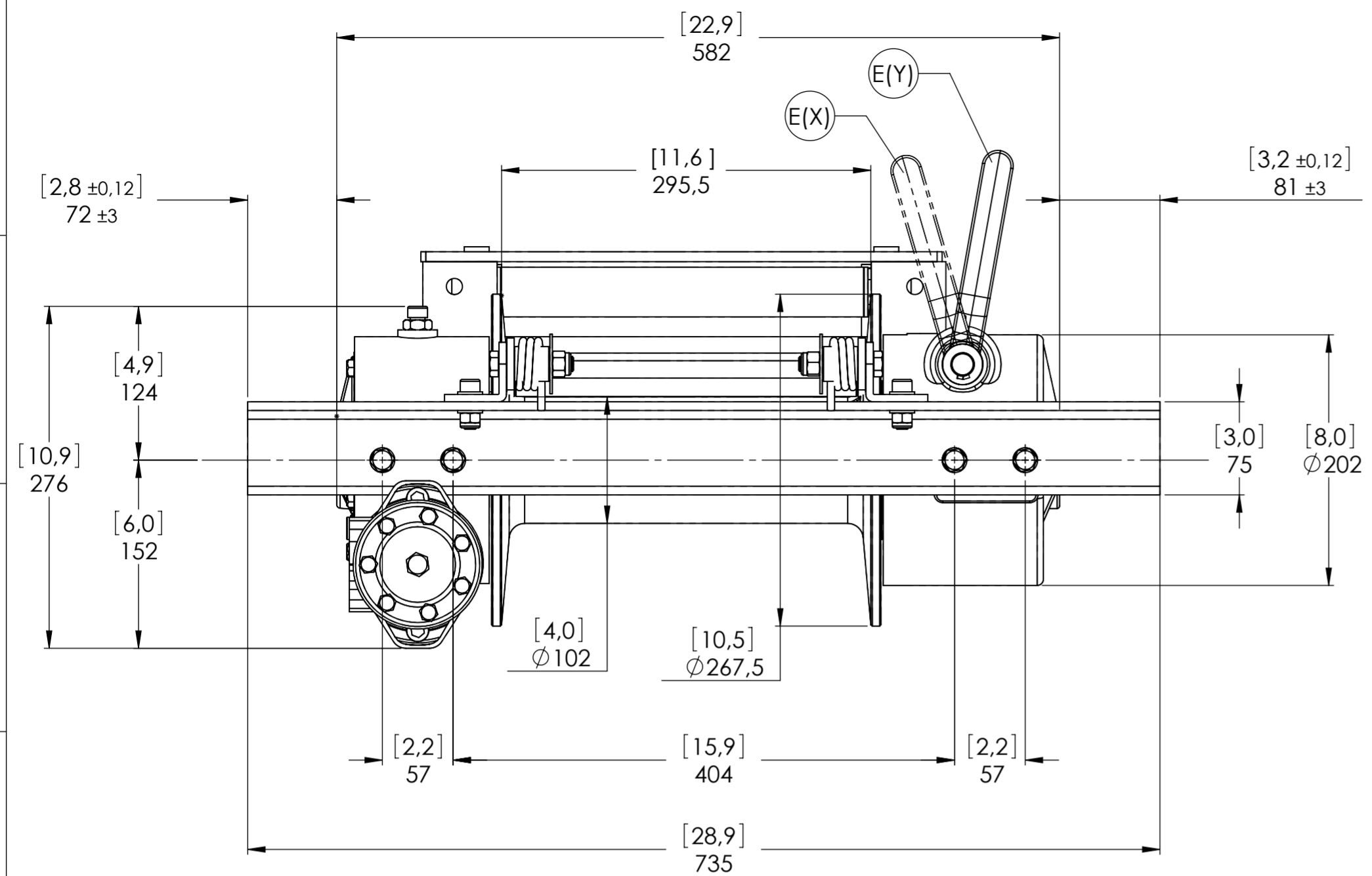
SCALE 1:4

WEIGHTS	
Winch (without oil)	60 Kgs.
Roller fairlead	-----
Heavy-duty roller fairlead	9,6 Kgs.
Rope tensioner	2,2 Kgs.

CODE RSH45D125AGR



Machinery Directive 2006/42/CE
EN 14492-1



CONNECTIONS	
A	1/2" G
B	1/2" G
C	-----
E (X) DISENGAGED	-----
E (Y) ENGAGED	-----

PLUGS	
1.Fill	3/8" G
2.Level	1/4" G
3.Drain	3/8" G

SCALE 1:4

WEIGHTS	
Winch (without oil)	60 Kgs.
Roller fairlead	-----
Heavy-duty roller fairlead	9,6 Kgs.
Rope tensioner	2,2 Kgs.

CODE RSH45D125GRP

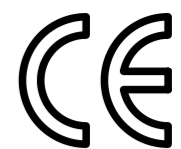
WINCH MODEL	RSH	WINCH GROUP	WORM GEAR
Pulling capacity (Kgs.)	4500	Date	Modification
Max.Oil flow	60 Lt./Min.		
Speed Line - first layer	5,3 Mt./Min.		
Speed Line - top layer	9,4 Mt./Min.		

DANGEROUS: Do not use winch to lift support or transport personnel.

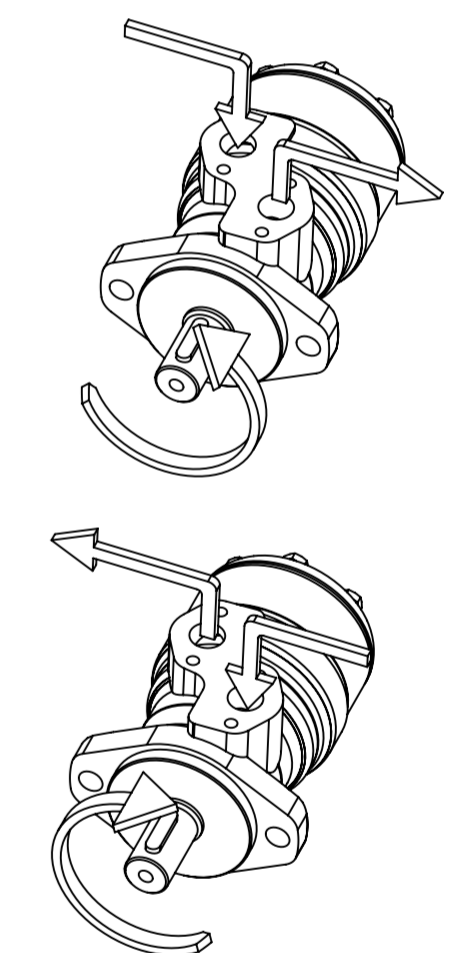
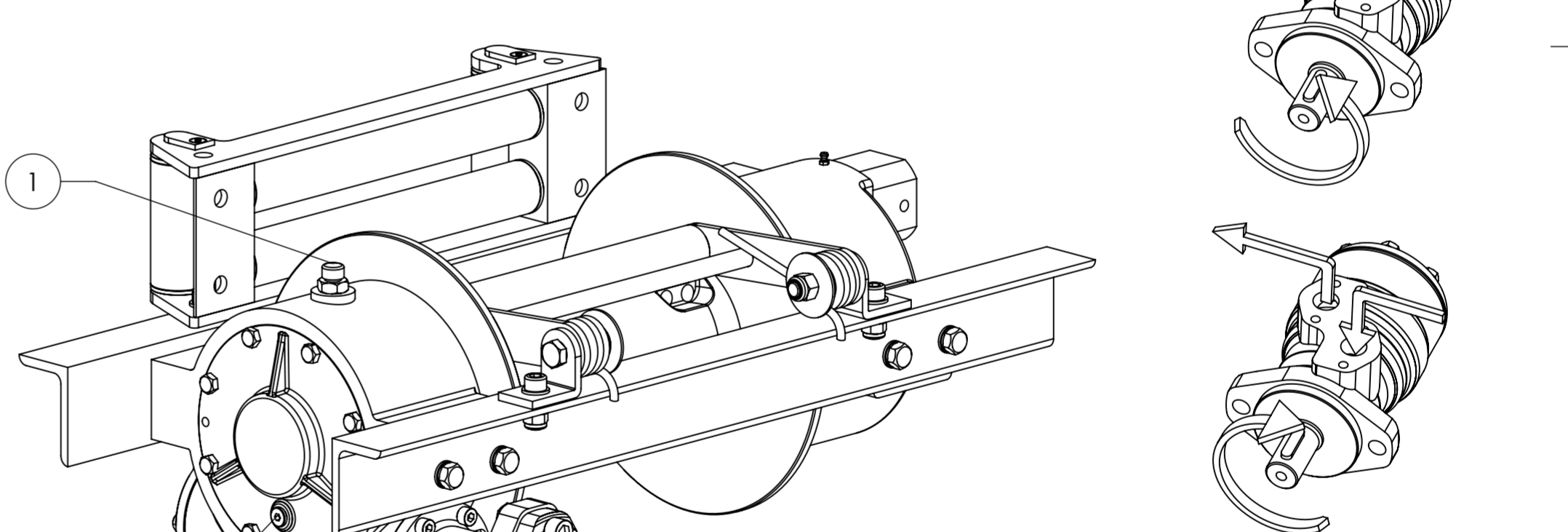
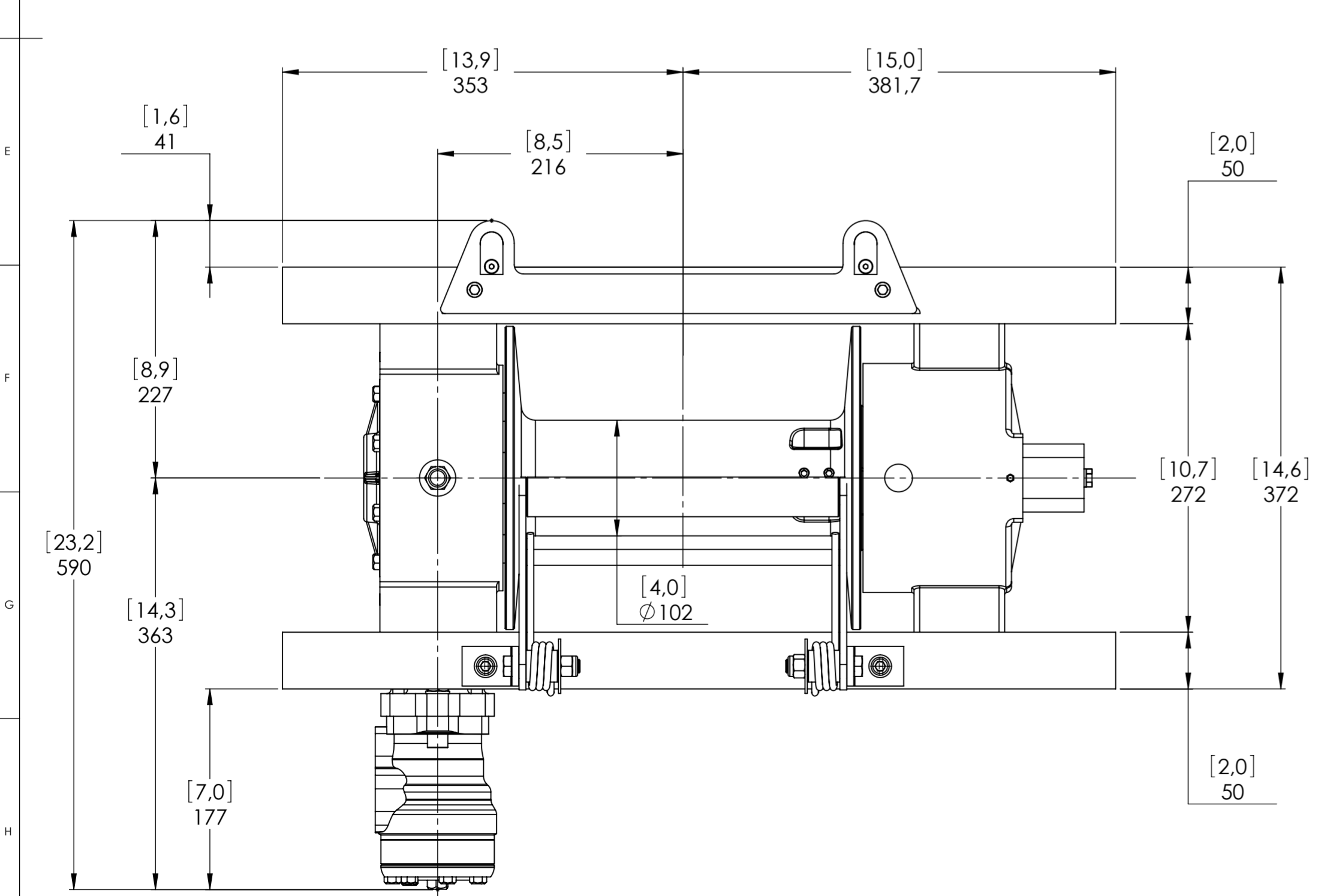
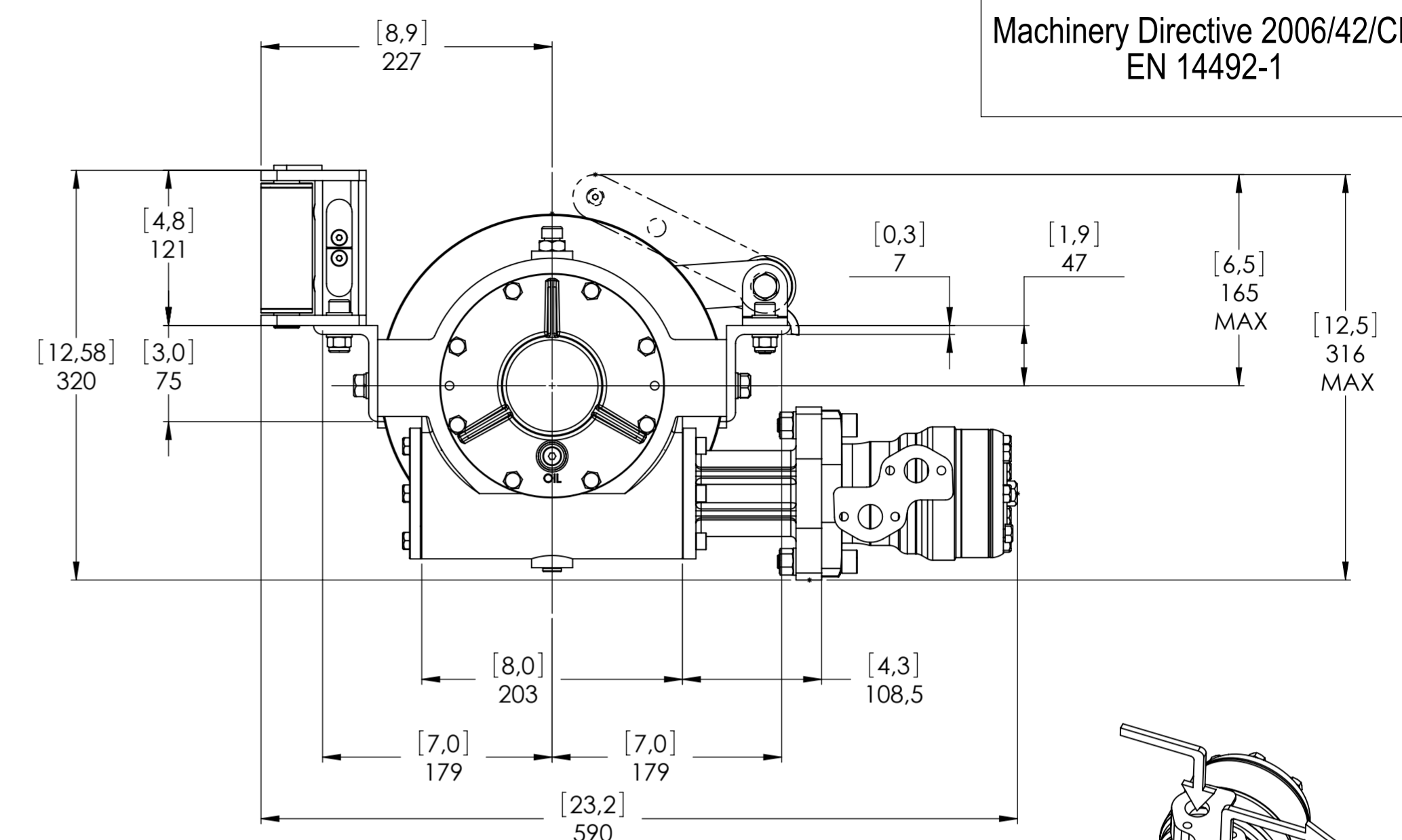
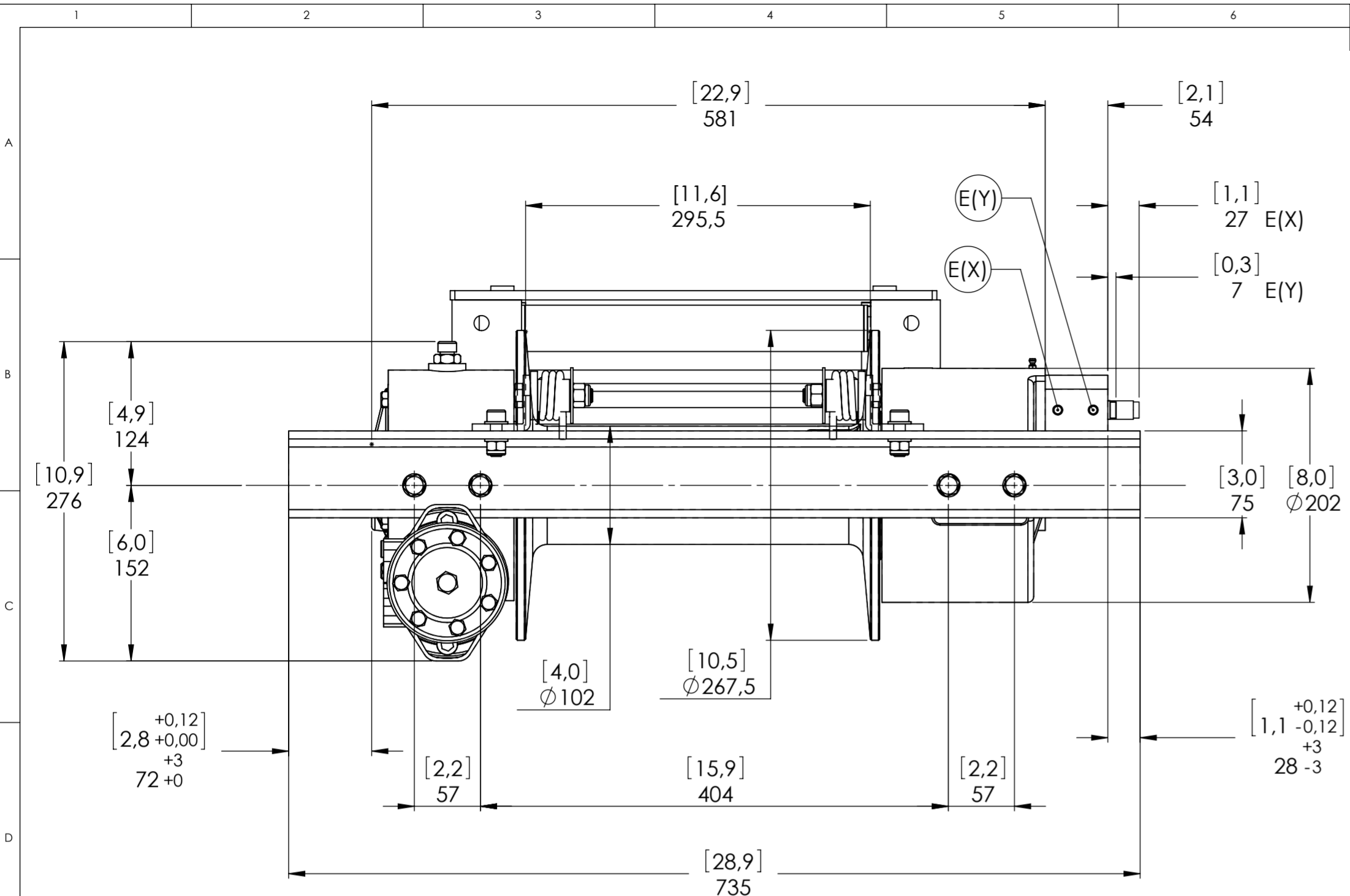
Gear ratio	29:1
Orbital hydr. motor	125 cc
Working pressure	150 bar
Drum size	295,5
Drum clutch	Manual

VIME INDUSTRIAL
Funo - Bologna (Italy)
www.vimeindustrial.com
The Quality is Transparent

VIME Industrial reserves the right to improve its products through changes in designed or materials as it may seem desirable without notice. DATE 12/05/2010



Machinery Directive 2006/42/CE
EN 14492-1



WINCH MODEL		WORM GEAR	
RSH		Date	
Pulling capacity (Kgs.)	4500	Modification	
Max.Oil flow	60 Lt./Min.	DANGEROUS: Do not use winch to lift support or transport personnel.	
Speed Line - first layer	5,3 Mt./Min.		
Speed Line - top layer	9,4 Mt./Min.	SCALE 1:4	
Gear ratio 29:1		WEIGHTS	
Orbital hydr. motor 125 cc		Winch (without oil) 60 Kgs.	
Working pressure 150 bar		Roller fairlead -----	
Drum size 295,5 mm		Heavy-duty roller fairlead 9,6 Kgs.	
Drum clutch Air-operated		Rope tensioner 2,2 Kgs.	
VIME Industrial : reserves the right to improve its products through changes in designed or materials as it may seem desirable without notice		DATE 12/05/2010	
The Quality is Transparent		CODE RSH45D125AGR	

CONNECTIONS	
A	1/2"G
B	1/2"G
C	-----
E (X) DISENGAGED	1/8"G
E (Y) ENGAGED	1/8"G

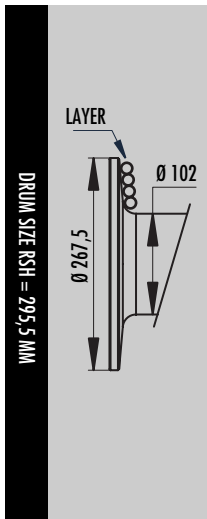
PLUGS	
1.Fill	3/8"G
2.Level	1/4"G
3.Drain	3/8"G

1.4.6 RSH 4500 WINCH TECHNICAL DATA

RATIO	WIRE ROPE SIZE [MM]	LAYER	LINE PULL
			[KGS.]
29:1	11*	1	4.500
		2	3.770
		3	3.240
		4	2.840
		5	2.530

OIL SUPPLY [LT/MIN]	DRUM REVOLUTION [RPM]	LINE SPEED [MT/MIN]				
		1	2	3	4	5
30	7,3	2,6	3,1	3,6	4,1	4,6
40	9,7	3,4	4,1	4,8	5,5	6,1
60	14,9	5,3	6,3	7,3	8,4	9,4

WIRE ROPE MIN. BREAKING LOAD EN 14492-1 [KGS.]	9.000
--	-------



LAYER	DRUM DIAMETER		WIRE ROPE ON LAYER [MT]		WIRE ROPE QUANTITY [MT]	
	Ø MM	-	11 MM	00 MM	11 MM	00 MM
			Ø MM	-	-	-
8	267	-	21,7	-	123,5	-
7	245	-	19,9	-	101,8	-
6	223	-	18,1	-	81,9	-
5	201	-	16,3	-	63,8	-
4	179	-	14,5	-	47,5	-
3	157	-	12,8	-	32,9	-
2	135	-	11,0	-	20,2	-
1	113	-	9,2	-	9,2	-
0	102	-	-	-	-	-

WIRE ROPE CAPACITY [MT]		MAX. WIRE ROPE CAPACITY EN 14492-1 [MT]		MAX. WIRE ROPE CAPACITY [MT]	
11 MM	00 MM	11 MM	00 MM	11 MM	00 MM
30	00	81**	00	123	00

DESCRIPTION	WEIGHTS
	[KG]
WINCH (WITHOUT CABLE)	60
ACCESSORY : ROLLER FAIRLEAD	9,6
ACCESSORY : CABLE TENSIONER	2,2

NOTES

Specifications are subject to change without notification and without incurring obligation. Specifications in this publication are theoretical and may vary depending on hydraulic system, environment, etc.

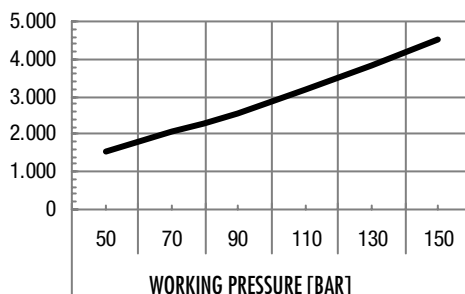
NOTES

*Wire rope size must be respected. Recommended wire rope min. tensile strength 2160 N/mm².
Wire rope minimum breaking load must be at least double of winch max. pulling capacity.

** Max. wire rope capacity according with EN 14492-1.

1.4.7 RSH 4500 WINCH PERFORMANCE CHARTS AT THE 1ST LAYER

LINE PULL-FIRST LAYER [KG]



LINE SPEED [MT/MIN]

