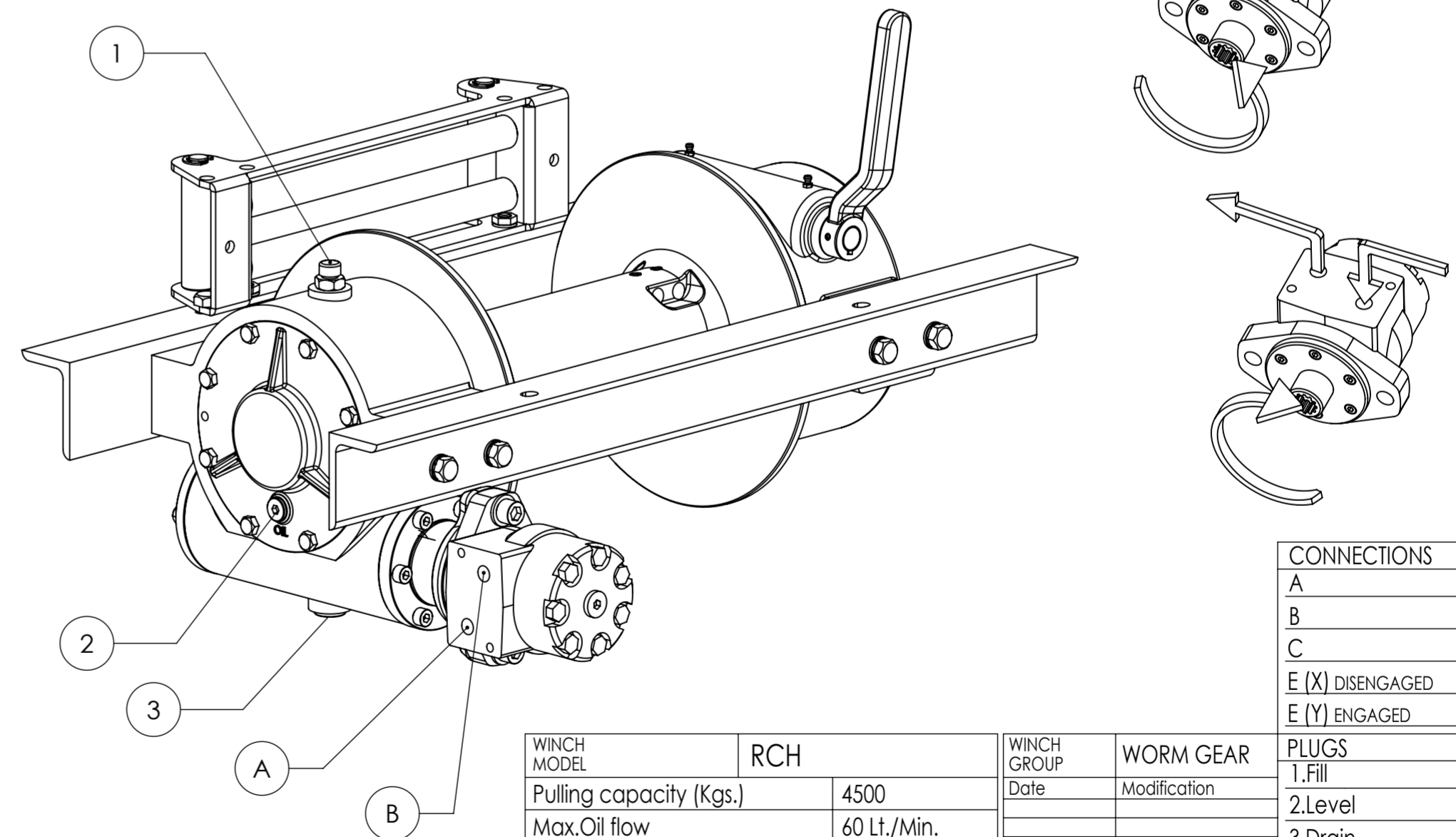
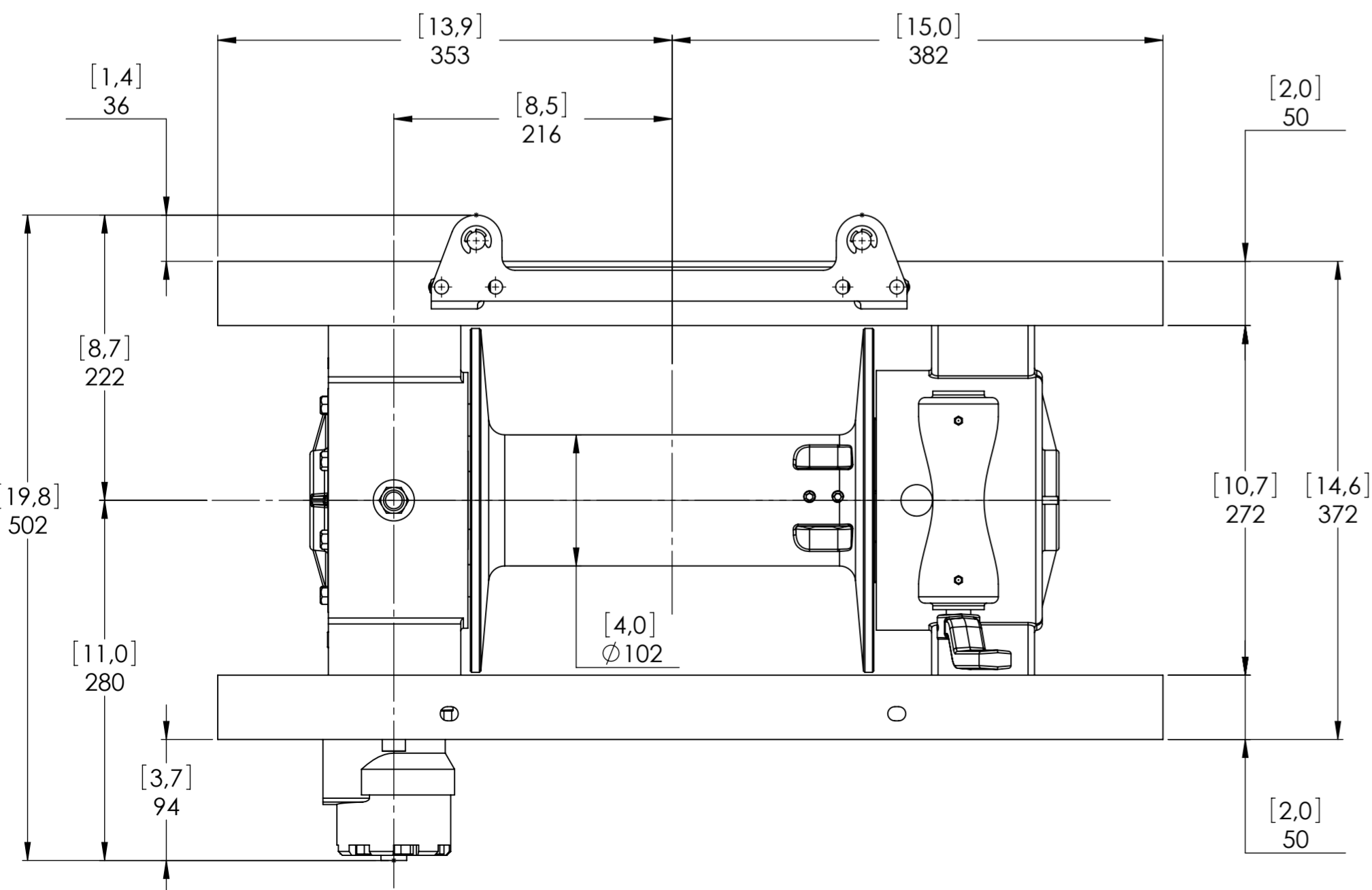
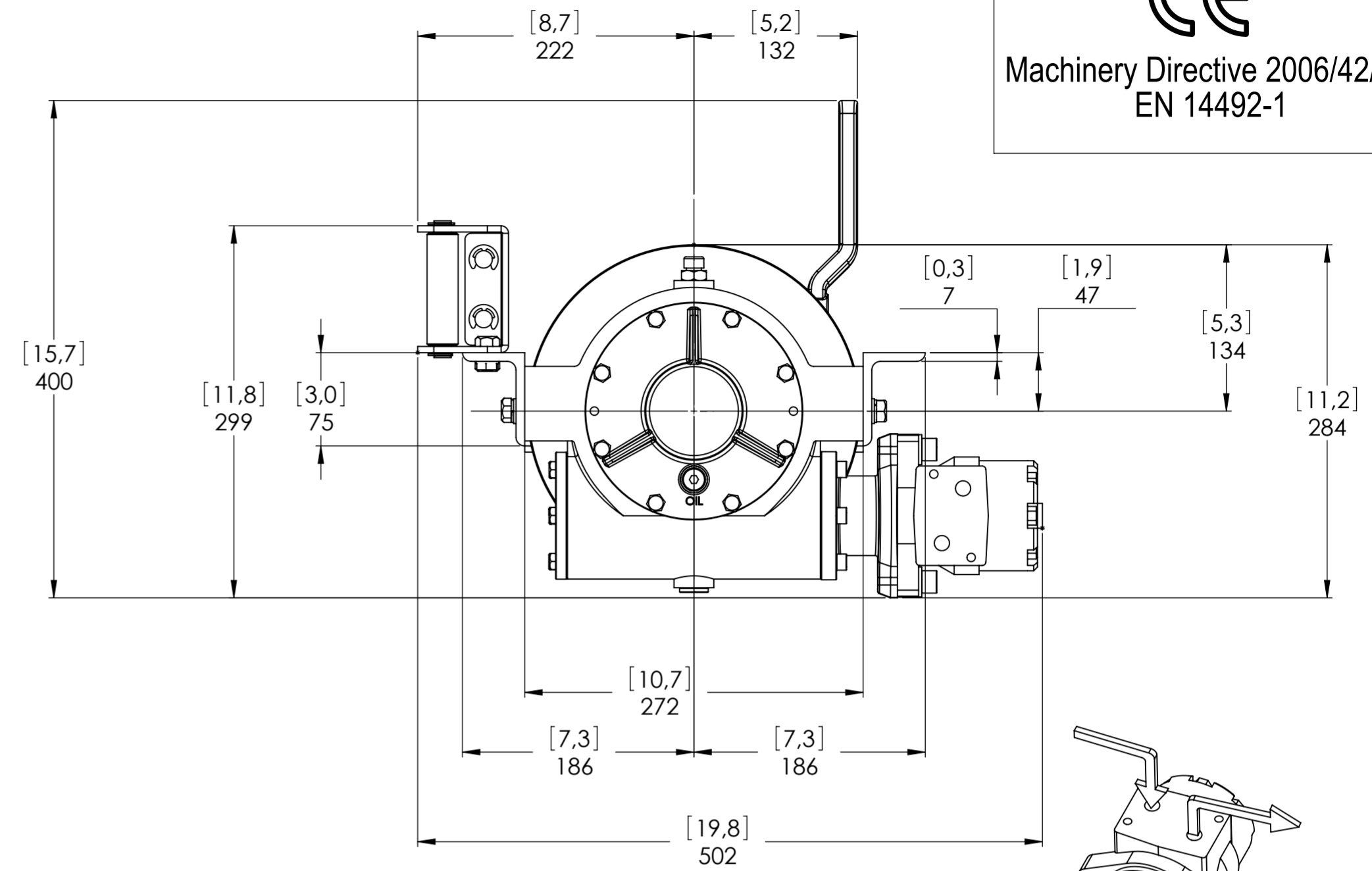
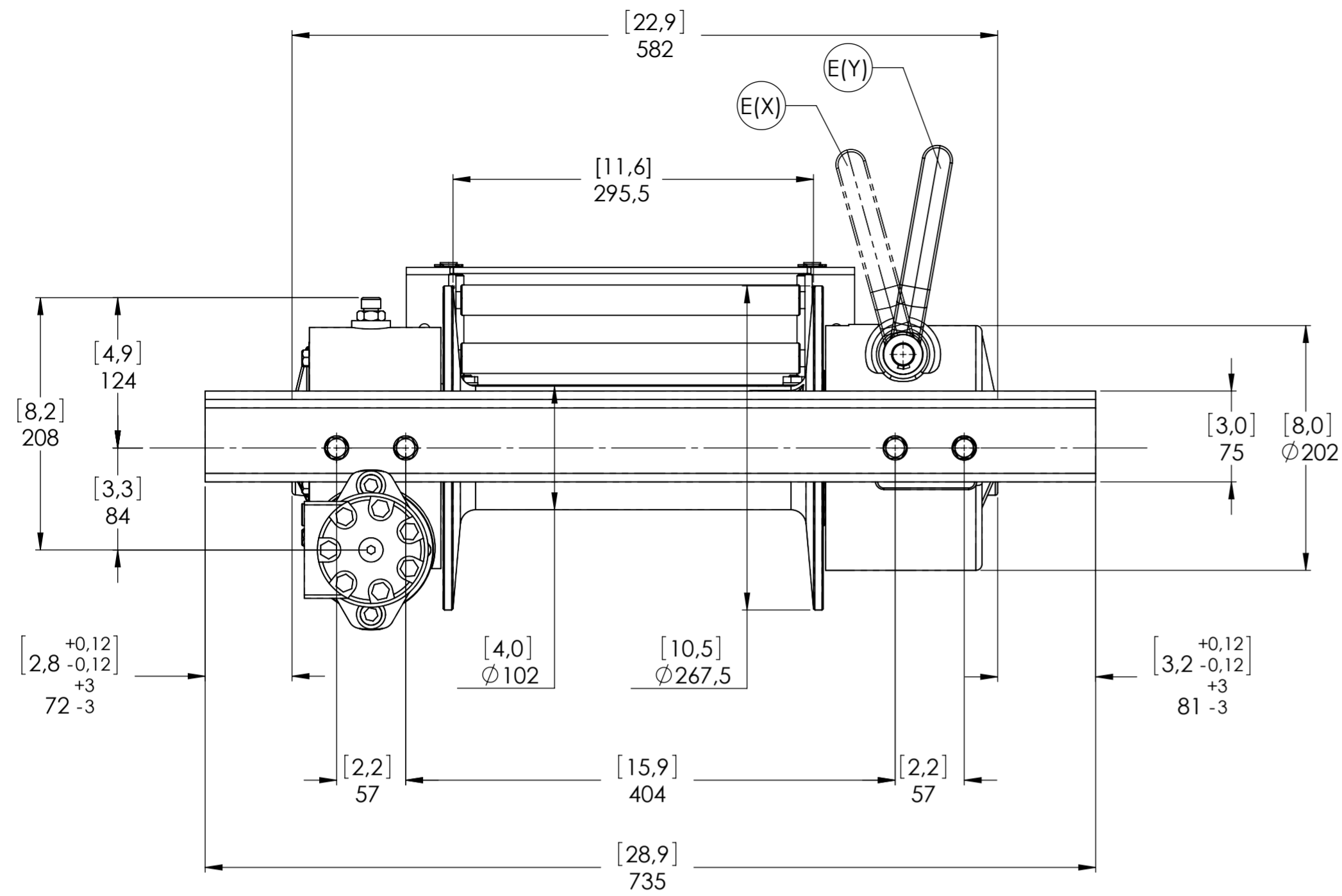


Machinery Directive 2006/42/CE  
EN 14492-1



CONNECTIONS	
A	1/2" G
B	1/2" G
C	-----
E (X)	DISENGAGED
E (Y)	ENGAGED

PLUGS	
1.Fill	3/8" G
2.Level	1/4" G
3.Drain	3/8" G

SCALE 1:4

WEIGHTS	
Winch (without oil)	58 Kgs.
Roller fairlead	4,4 Kgs.
Heavy-duty roller fairlead	-----
Rope tensioner	-----

CODE RCH45K160G

WINCH MODEL	RCH	WINCH GROUP	WORM GEAR
Pulling capacity (Kgs.)	4500	Date	Modification
Max.Oil flow	60 Lt./Min.		
Speed Line - first layer	4,3 Mt./Min.		
Speed Line - top layer	7,6 Mt./Min.		

**DANGEROUS:** Do not use winch to lift support or transport personnel.

Gear ratio	29:1
Orbital hydr. motor	160 cc
Working pressure	130
Drum size	295,5
Drum clutch	Manual

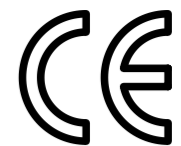


Funo - Bologna (Italy)  
www.vimeindustrial.com

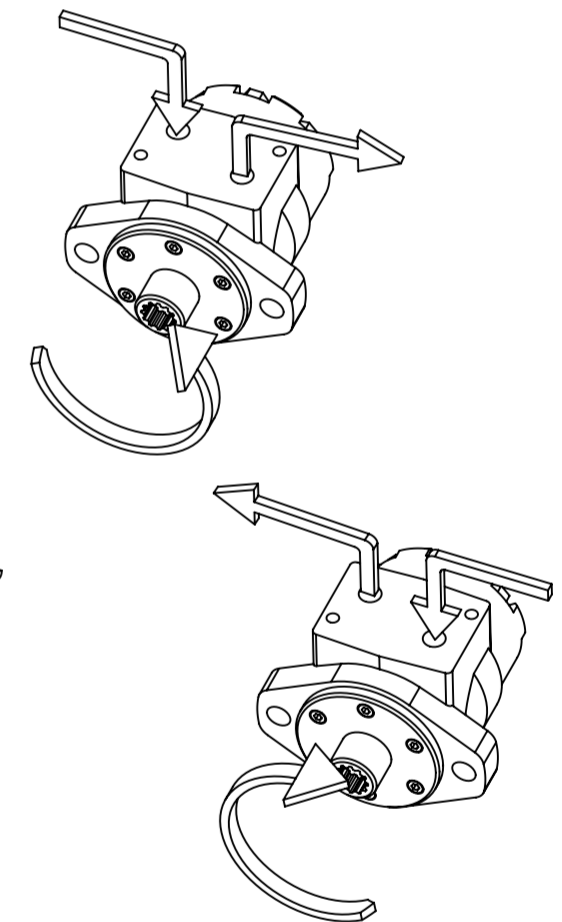
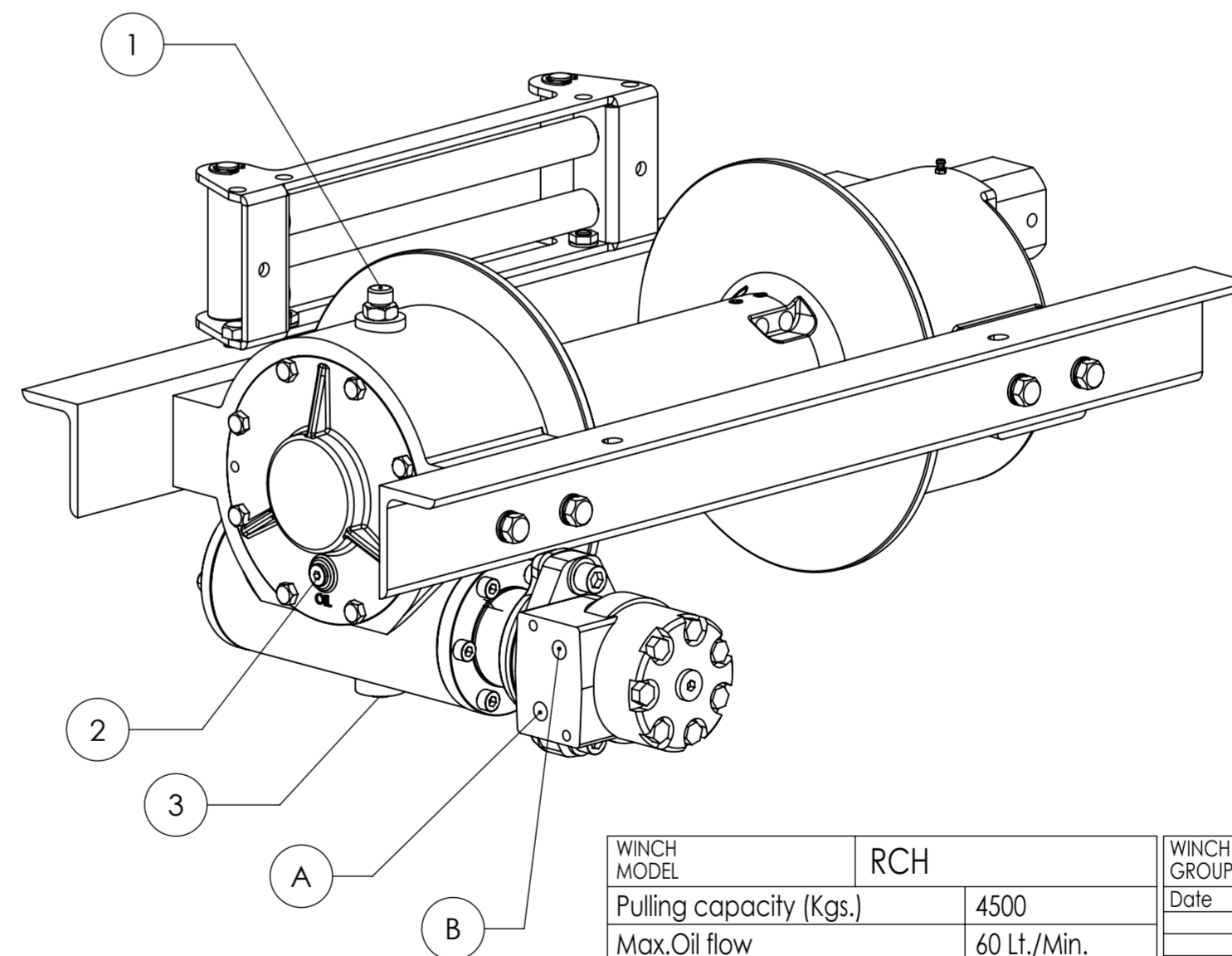
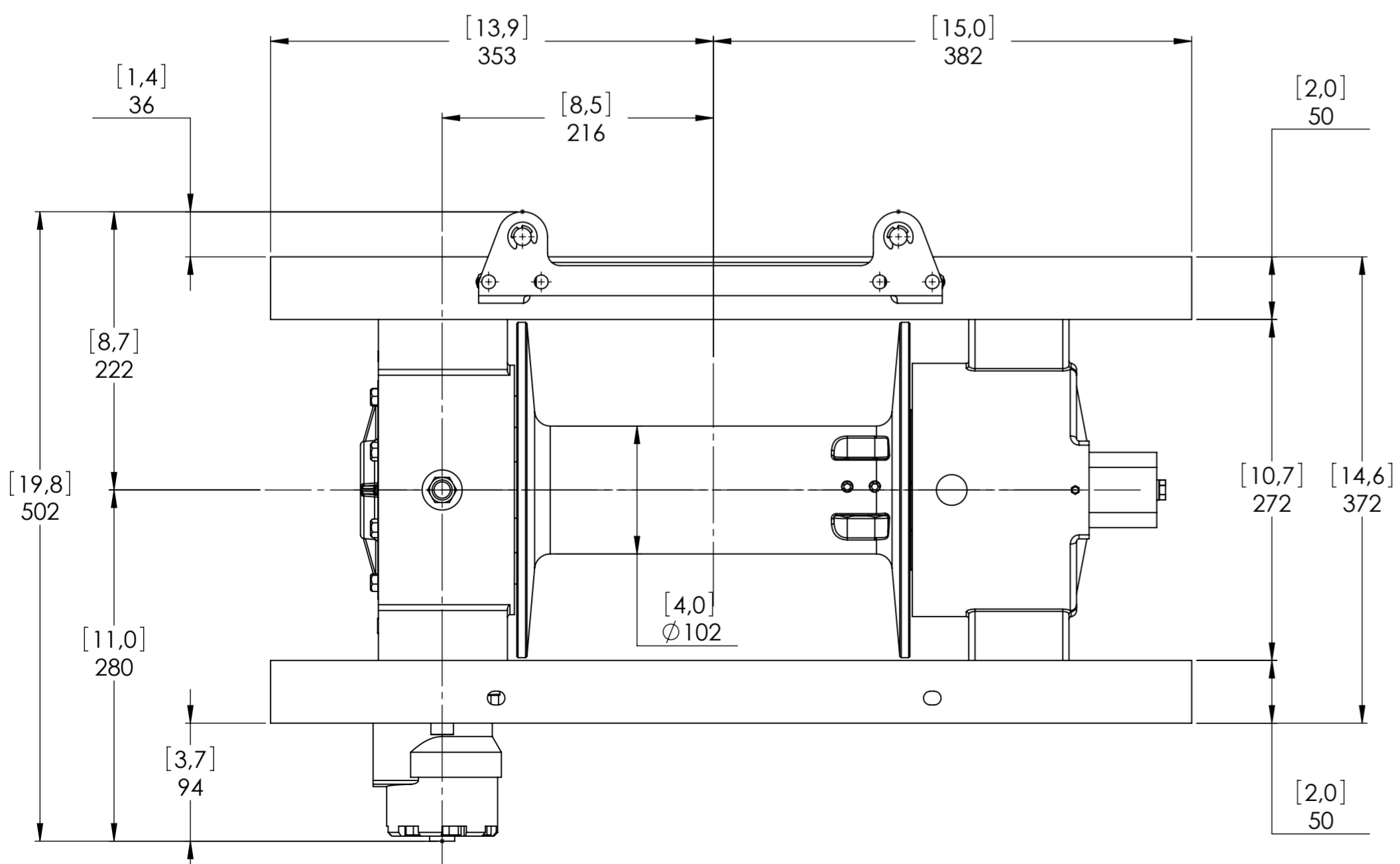
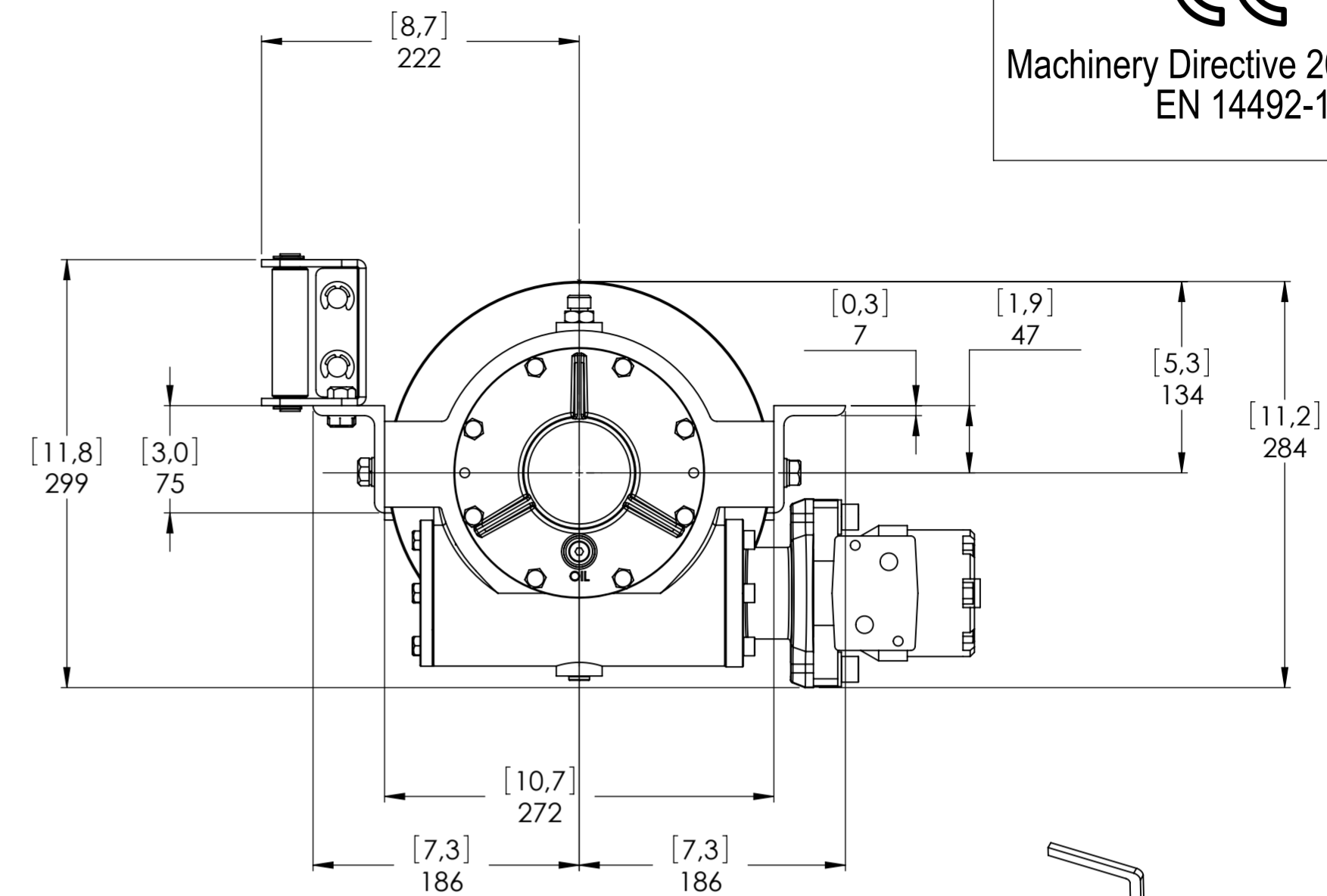
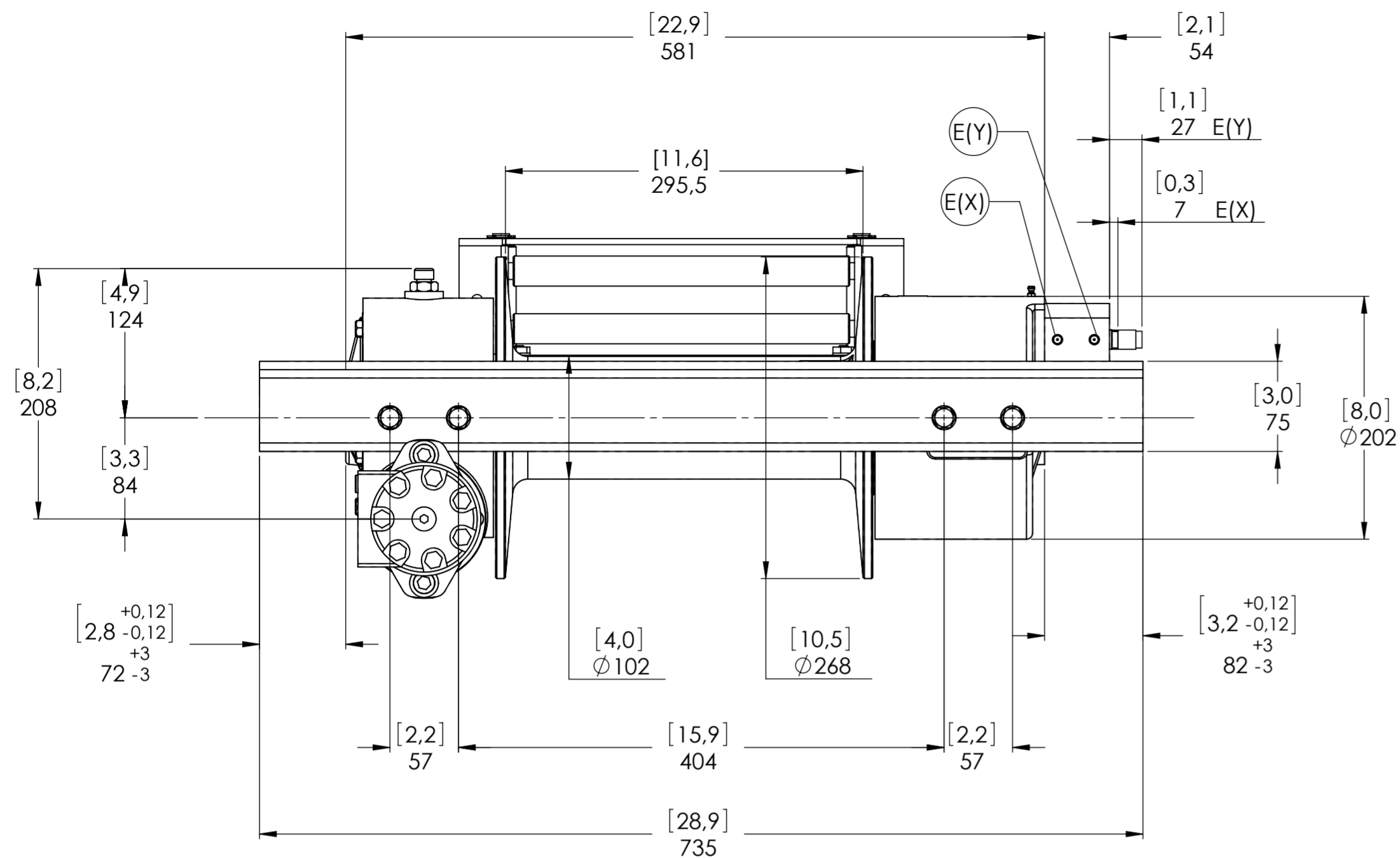
The Quality is Transparent

VIME Industrial reserves the right to improve its products through changes in designed or materials as it may seem desirable without notice.

DATE 12/05/2010



Machinery Directive 2006/42/CE  
EN 14492-1



WINCH MODEL	RCH	WINCH GROUP	WORM GEAR
Pulling capacity (Kgs.)	4500	Date	Modification
Max.Oil flow	60 Lt./Min.		
Speed Line - first layer	4,3 Mt./Min.		
Speed Line - top layer	7,6 Mt./Min.		

<b>DANGEROUS:</b> Do not use winch to lift support or transport personnel.	
Gear ratio	29:1
Orbital hydr. motor	160 cc
Working pressure	130
Drum size	295,5
Drum clutch	Air-operated

CONNECTIONS	
A	1/2"G
B	1/2"G
C	-----
E (X) DISENGAGED	1/8"G
E (Y) ENGAGED	1/8"G

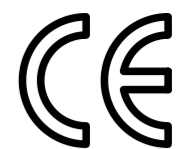
PLUGS	
1.Fill	3/8"G
2.Level	1/4"G
3.Drain	3/8"G

SCALE	1:4
-------	-----

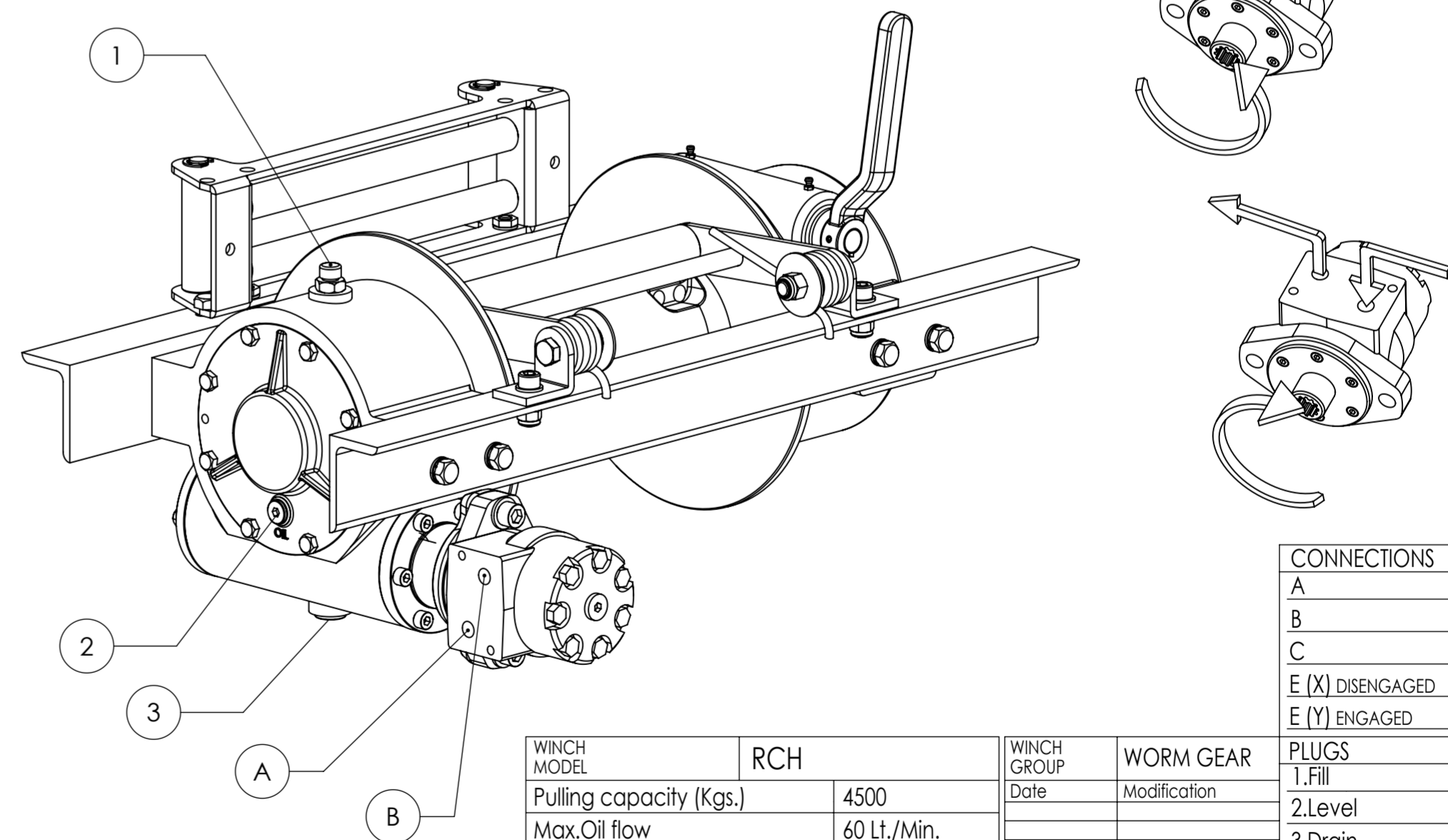
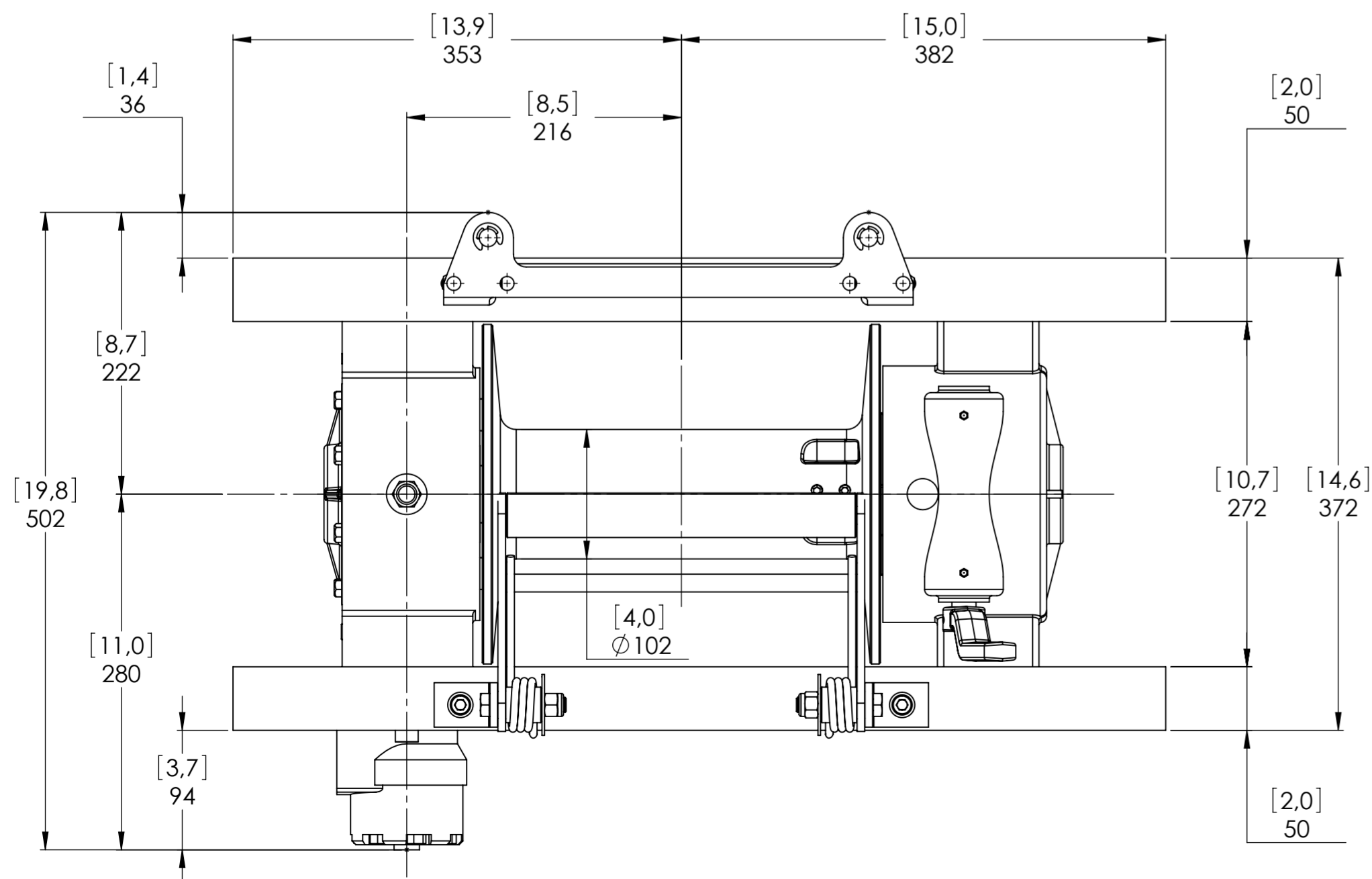
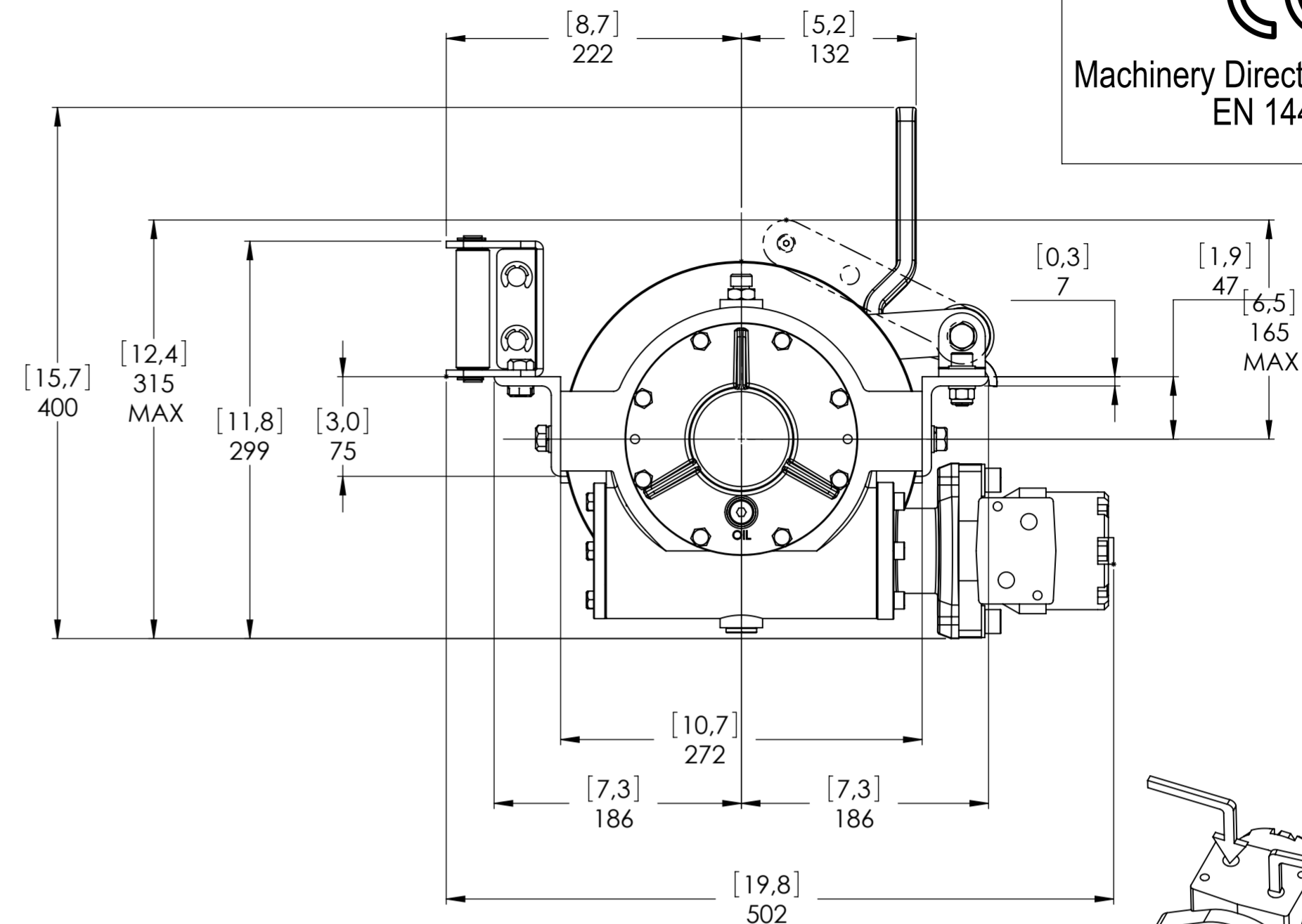
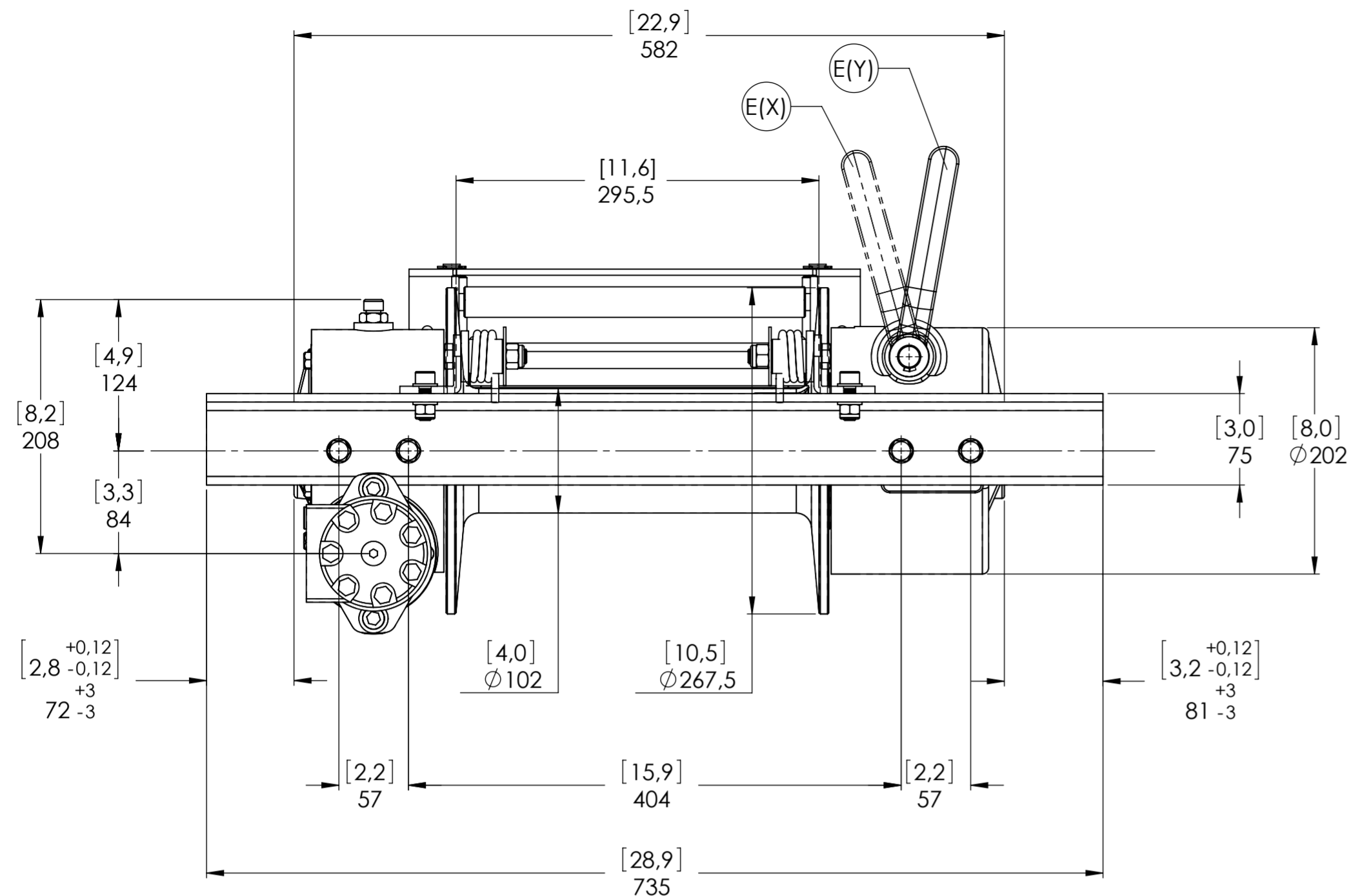
WEIGHTS	
Winch (without oil)	58 Kgs.
Roller fairlead	4,4 Kgs.
Heavy-duty roller fairlead	-----
Rope tensioner	-----

**VIME INDUSTRIAL**  
Funo - Bologna (Italy)  
www.vimeindustrial.com  
*The Quality is Transparent*

DATE	12/05/2010
CODE	RCH45K160AG



Machinery Directive 2006/42/CE  
EN 14492-1



CONNECTIONS	
A	1/2" G
B	1/2" G
C	-----
E (X) DISENGAGED	-----
E (Y) ENGAGED	-----

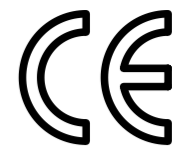
WINDCH MODEL		RCH		WINDCH GROUP		WORM GEAR	
Pulling capacity (Kgs.)	4500	Date	Modification				
Max.Oil flow	60 Lt./Min.	<b>DANGEROUS:</b> Do not use winch to lift support or transport personnel.					
Speed Line - first layer	4,3 Mt./Min.						
Speed Line - top layer	7,6 Mt./Min.						

PLUGS		SCALE		WEIGHTS	
1.Fill	3/8" G	1:4		Winch (without oil)	58 Kgs.
2.Level	1/4" G			Roller fairlead	4,4 Kgs.
3.Drain	3/8" G			Heavy-duty roller fairlead	-----
				Rope tensioner	2,2 Kgs.

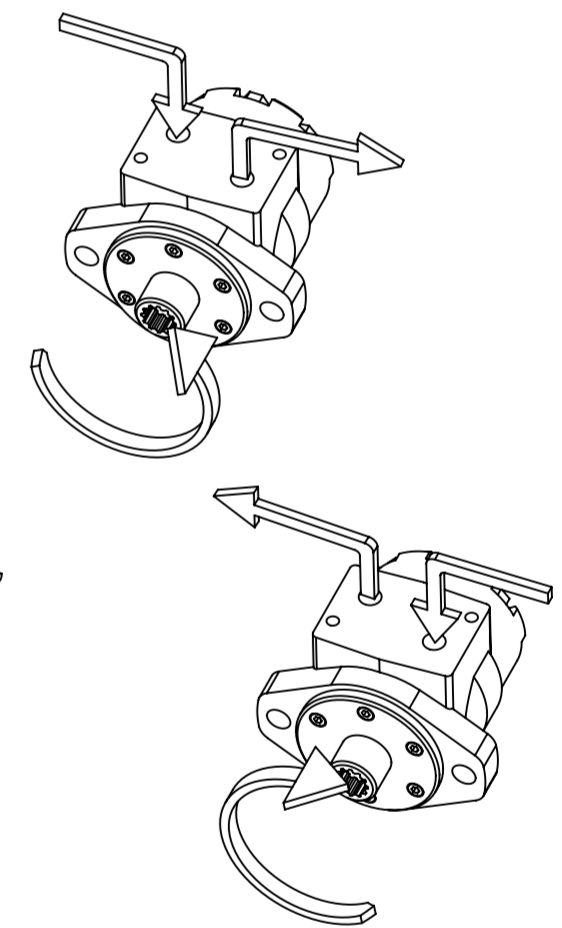
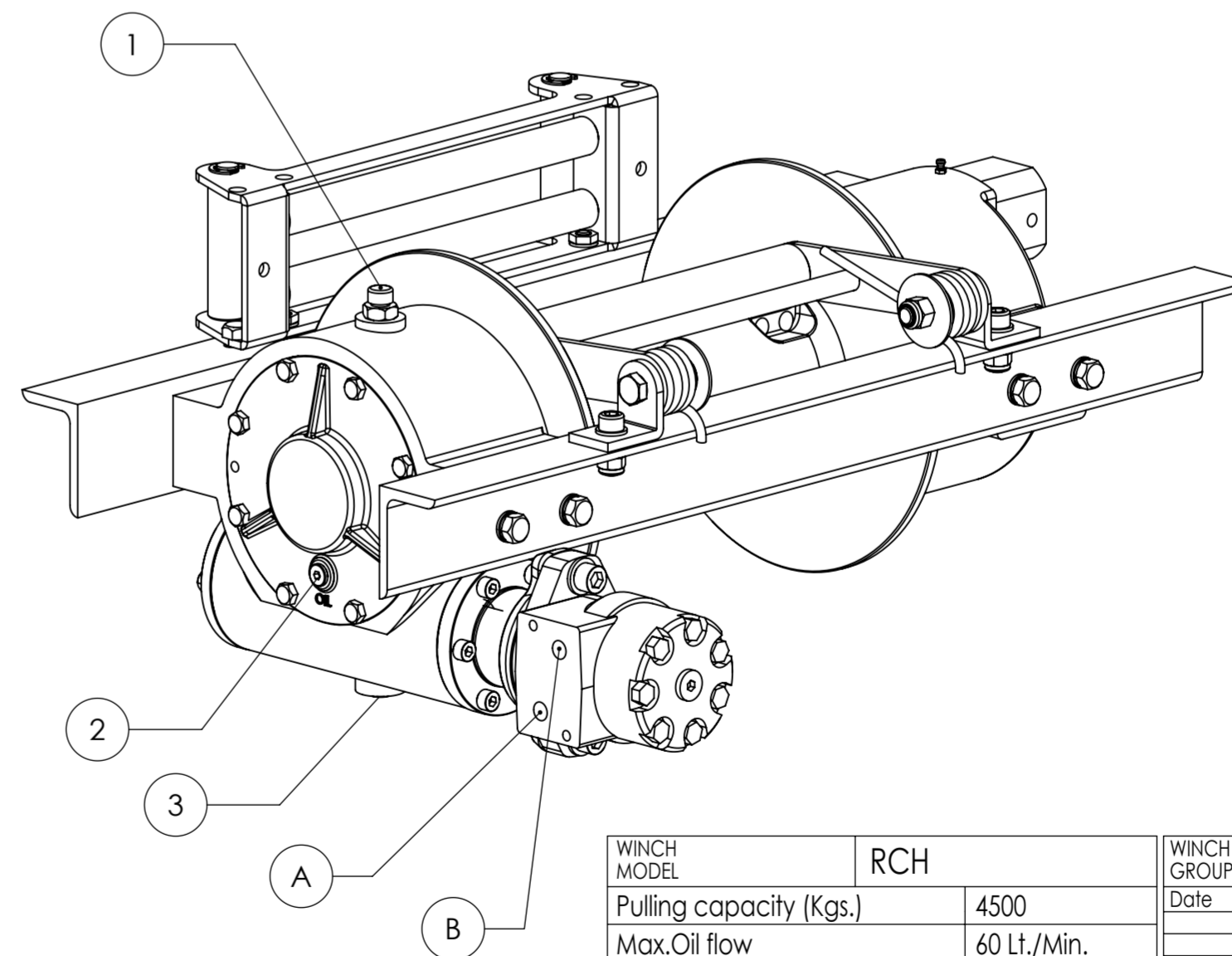
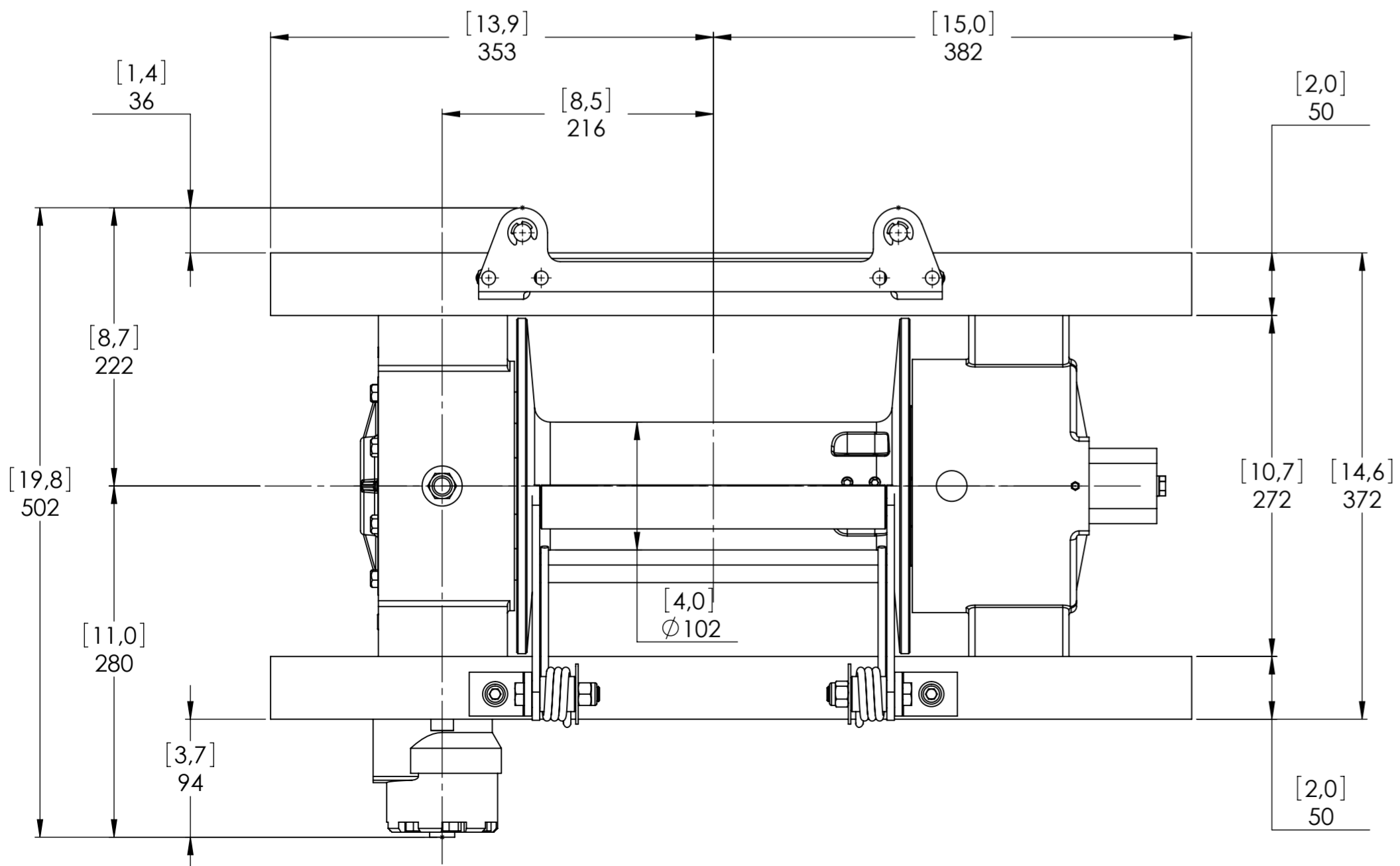
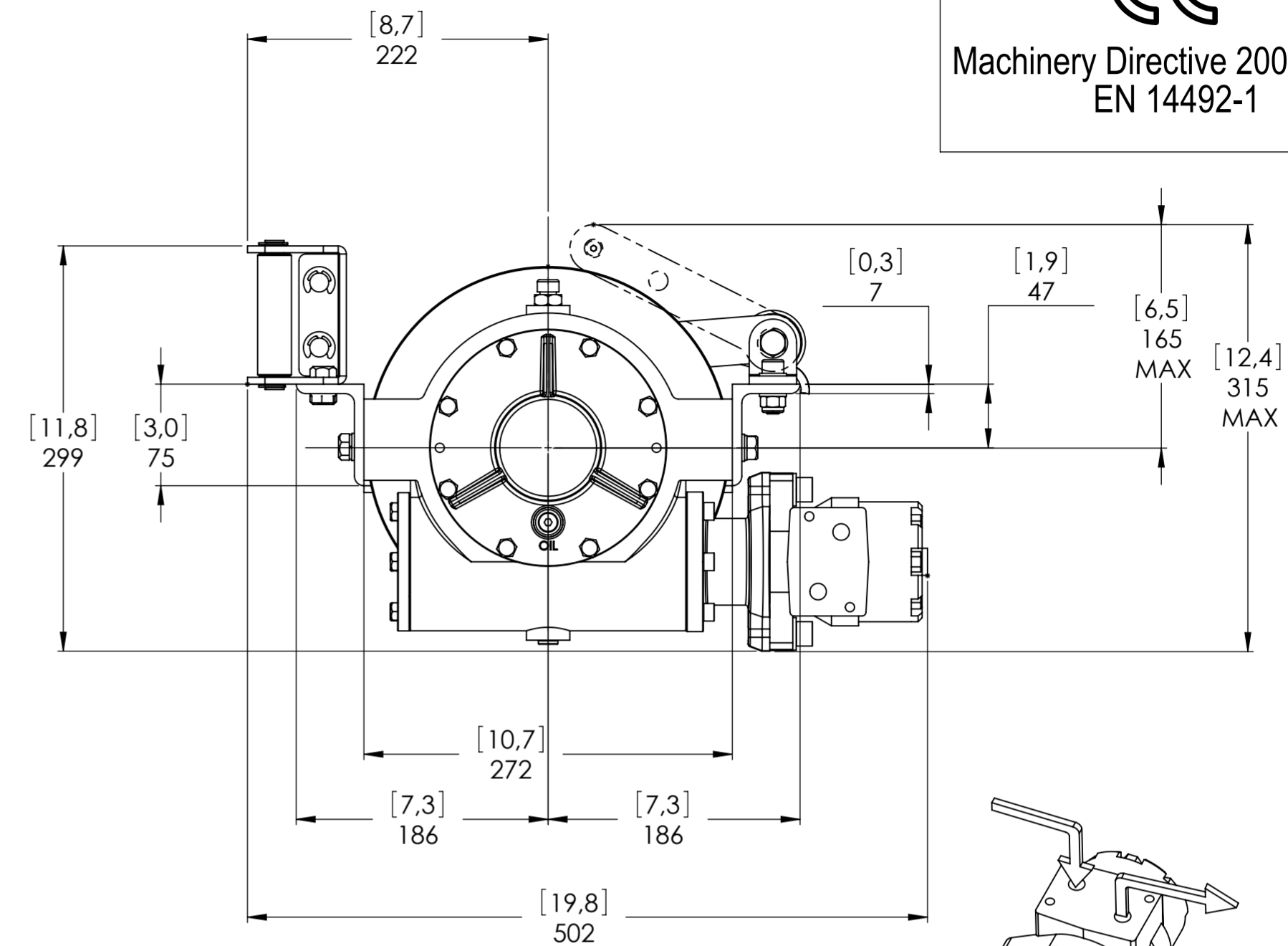
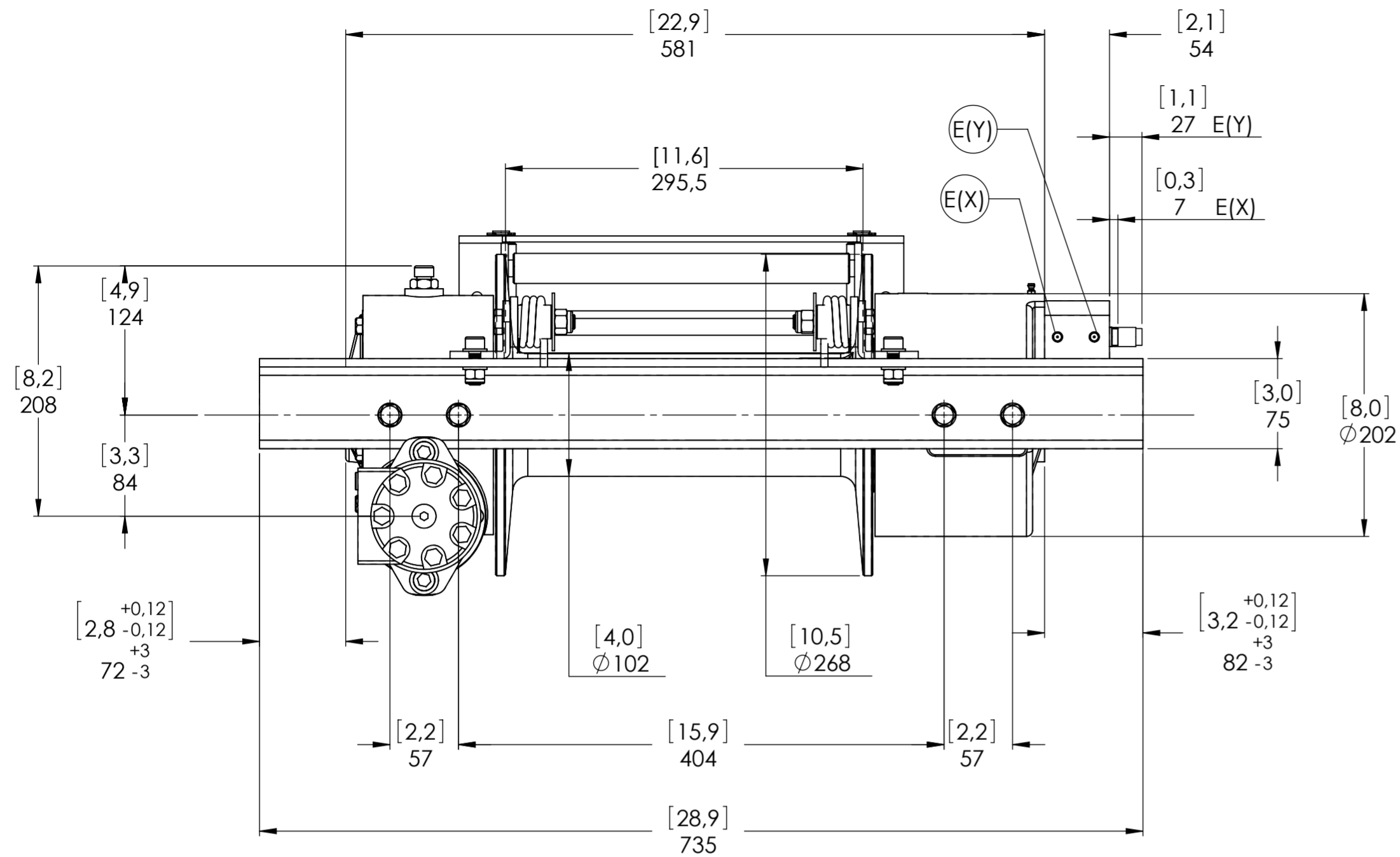
**VIME INDUSTRIAL**  
Funo - Bologna (Italy)  
www.vimeindustrial.com  
*The Quality is Transparent*

Gear ratio | 29:1  
Orbital hydr. motor | 160 cc  
Working pressure | 130  
Drum size | 295,5  
Drum clutch | Manual  
VIME Industrial : reserves the right to improve its products through changes in designed or materials as it may seem desirable without notice  
DATE 12/05/2010

CODE RCH45K160GP



Machinery Directive 2006/42/CE  
EN 14492-1



CONNECTIONS	
A	1/2"G
B	1/2"G
C	-----
E (X) DISENGAGED	1/8"G
E (Y) ENGAGED	1/8"G

PLUGS	
1.Fill	3/8"G
2.Level	1/4"G
3.Drain	3/8"G

SCALE 1:4

WEIGHTS	
Winch (without oil)	58 Kgs.
Roller fairlead	4,4 Kgs.
Heavy-duty roller fairlead	----
Rope tensioner	2,2 Kgs.

CODE RCH45K160AGP

WINCH MODEL	RCH	WINCH GROUP	WORM GEAR
Pulling capacity (Kgs.)	4500	Date	Modification
Max.Oil flow	60 Lt./Min.		
Speed Line - first layer	4,3 Mt./Min.		
Speed Line - top layer	7,6 Mt./Min.		

**DANGEROUS:** Do not use winch to lift support or transport personnel.

Gear ratio	29:1
Orbital hydr. motor	160 cc
Working pressure	130
Drum size	295,5
Drum clutch	Air-operated



The Quality is Transparent

VIME Industrial reserves the right to improve its products through changes in designed or materials as it may seem desirable without notice. DATE 12/05/2010

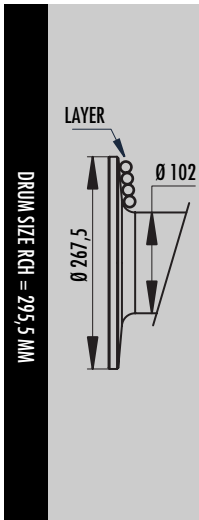
## 1.4.12 RCH 4500 WINCH TECHNICAL DATA

RATIO	WIRE ROPE SIZE [MM]	LAYER	LINE PULL
			[KGS.]
1/29	11*	1	4.500
		2	3.770
		3	3.240
		4	2.840
		5	2.530

OIL SUPPLY [LT/MIN]	DRUM REVOLUTION [RPM]	LINE SPEED [MT/MIN]				
		1	2	3	4	5
30	7,3	1,8	2,2	2,6	2,9	3,3
40	9,7	2,8	3,4	4,0	4,5	5,1
60	14,9	4,3	5,1	5,9	6,8	7,6

WIRE ROPE MINIMUM BREAKING LOAD EN 14492-1 [KG]	9.000
---	-------

LAYER	DRUM DIAMETER		WIRE ROPE ON LAYER		WIRE ROPE QUANTITY	
	Ø MM	-	[MT]		[MT]	
			11 MM	00 MM	11 MM	00 MM
8	267	-	21,7	-	123,5	-
7	245	-	19,9	-	101,8	-
6	223	-	18,1	-	81,9	-
5	201	-	16,3	-	63,8	-
4	179	-	14,5	-	47,5	-
3	157	-	12,8	-	32,9	-
2	135	-	11,0	-	20,2	-
1	113	-	9,2	-	9,2	-
0	102	-	-	-	-	-



WIRE ROPE CAPACITY [MT]		MAX. WIRE ROPE CAPACITY EN 14492-1 [MT]		MAX. WIRE ROPE CAPACITY [MT]	
11 MM	00 MM	11 MM	00 MM	11 MM	00 MM
30	00	81**	00	123	00

DESCRIPTION	WEIGHT
	[KGS.]
WINCH (WITHOUT CABLE)	53
ACCESSORY : ROLLERFAILREAD	9,6
ACCESSORY : CABLE TENSIONER	2,2

### NOTE

Specifications are subject to change without notification and without incurring obligation. Specifications in this publication are theoretical and may vary depending on hydraulic system, environment, etc.

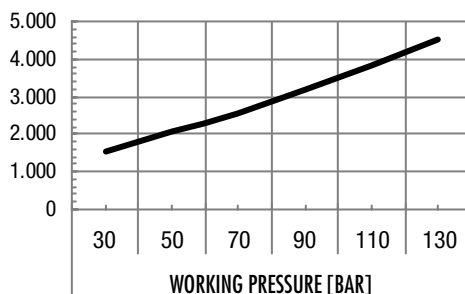
### NOTE

\*Wire rope size must be respected. Recommended wire rope min. tensile strength 2160 N/mm<sup>2</sup>.  
Wire rope minimum breaking load must be at least double of winch max. pulling capacity.

\*\* Max. wire rope capacity according with EN 14492-1.

## 1.4.13 RCH 4500 WINCH PERFORMANCE CHARTS AT THE 1<sup>ST</sup> LAYER

LINE PULL-FIRST LAYER [KGS]



LINE SPEED [MT/MIN]

