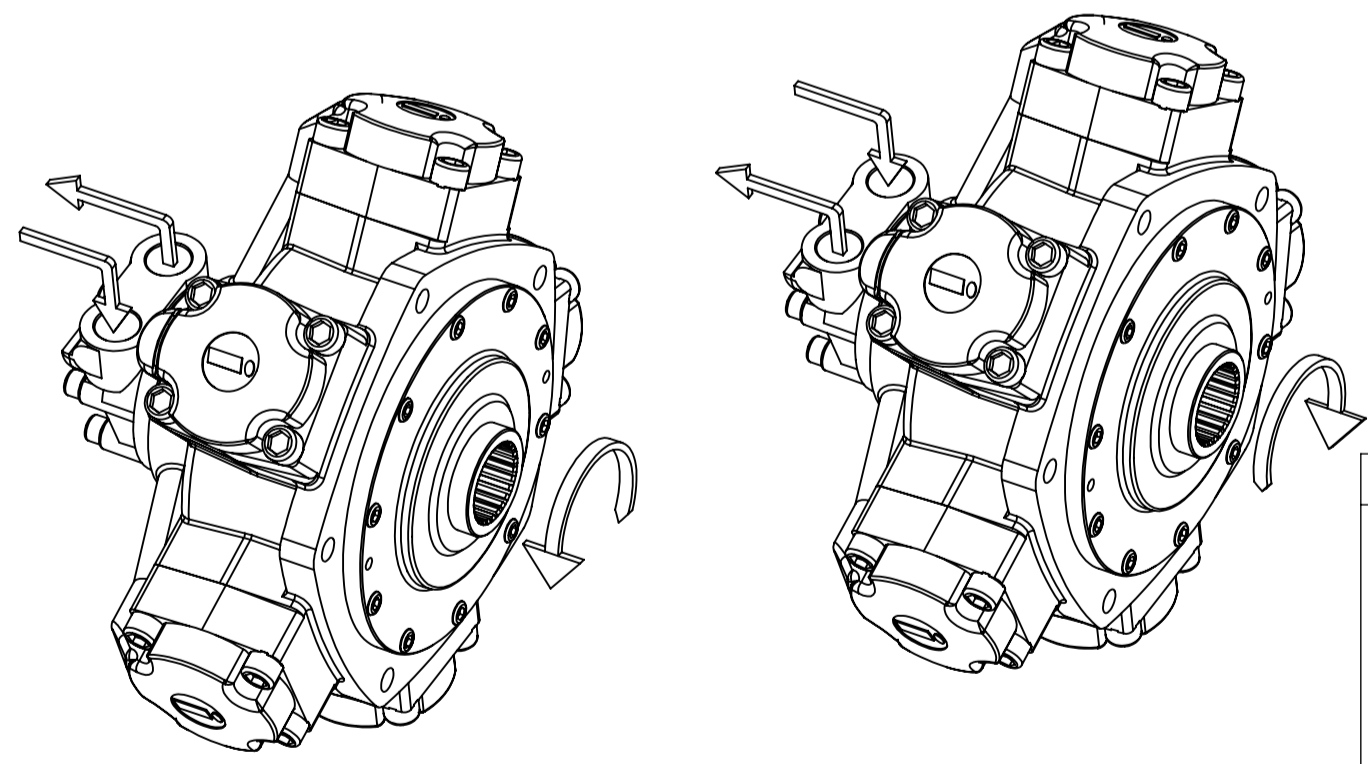
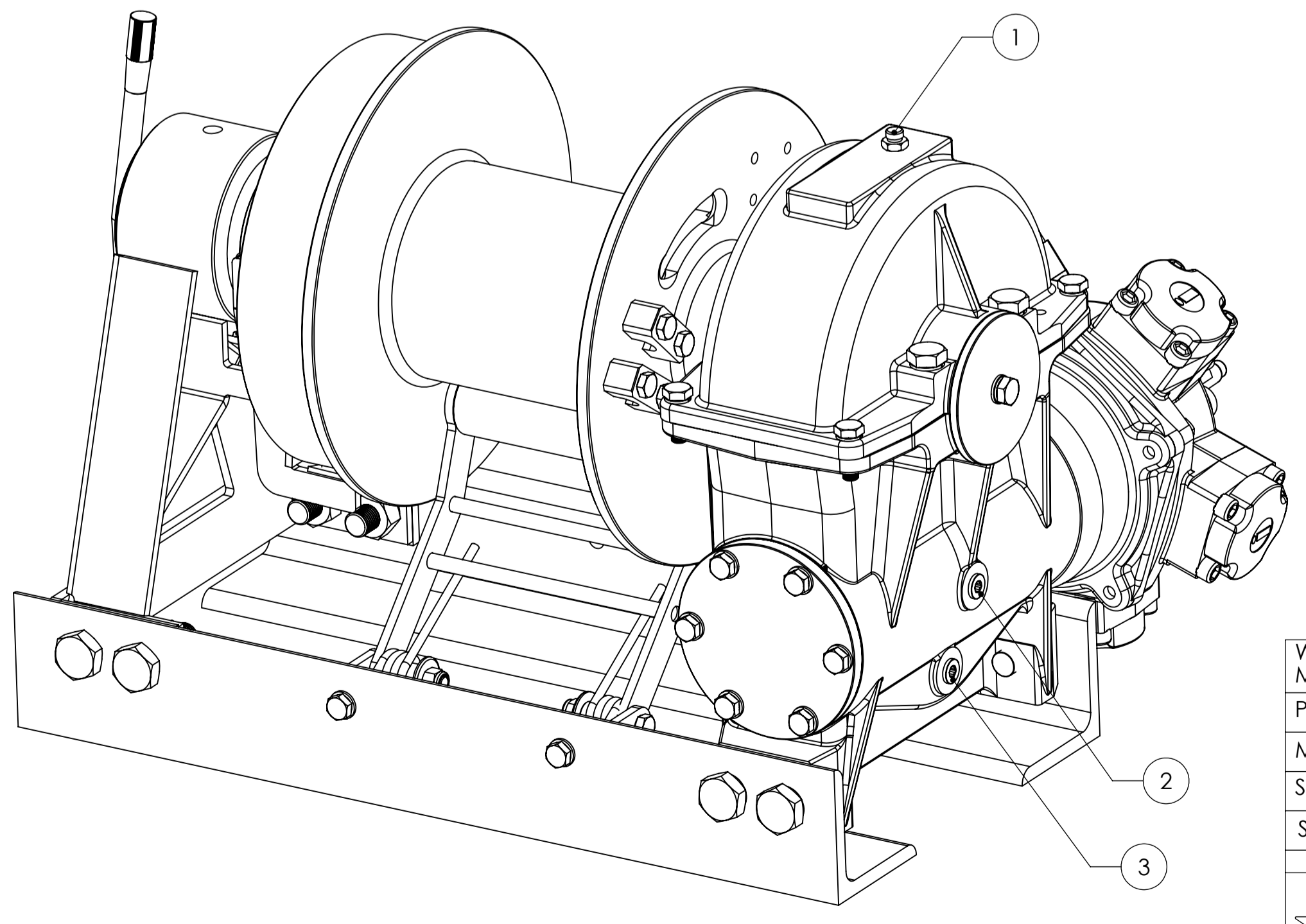
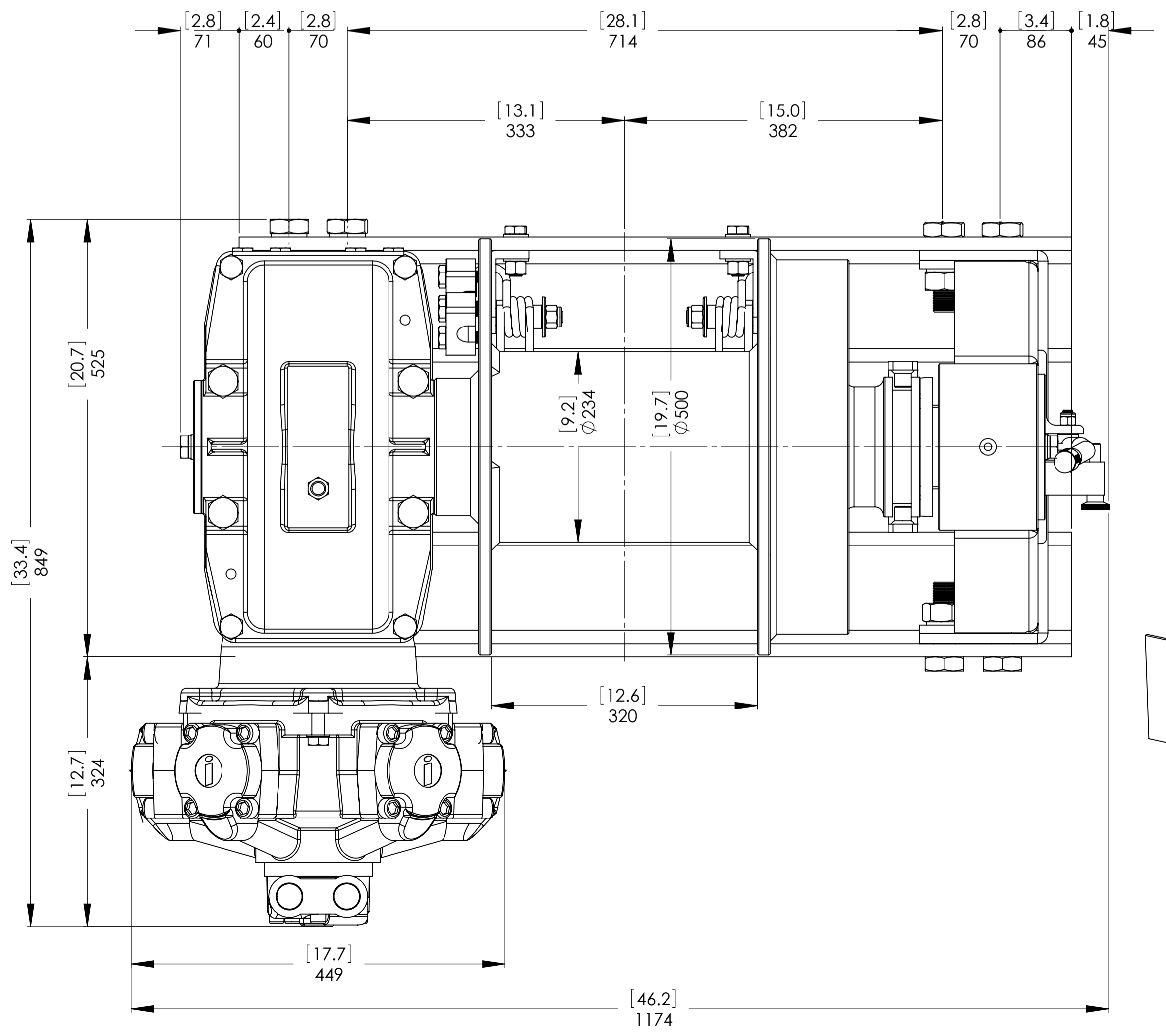
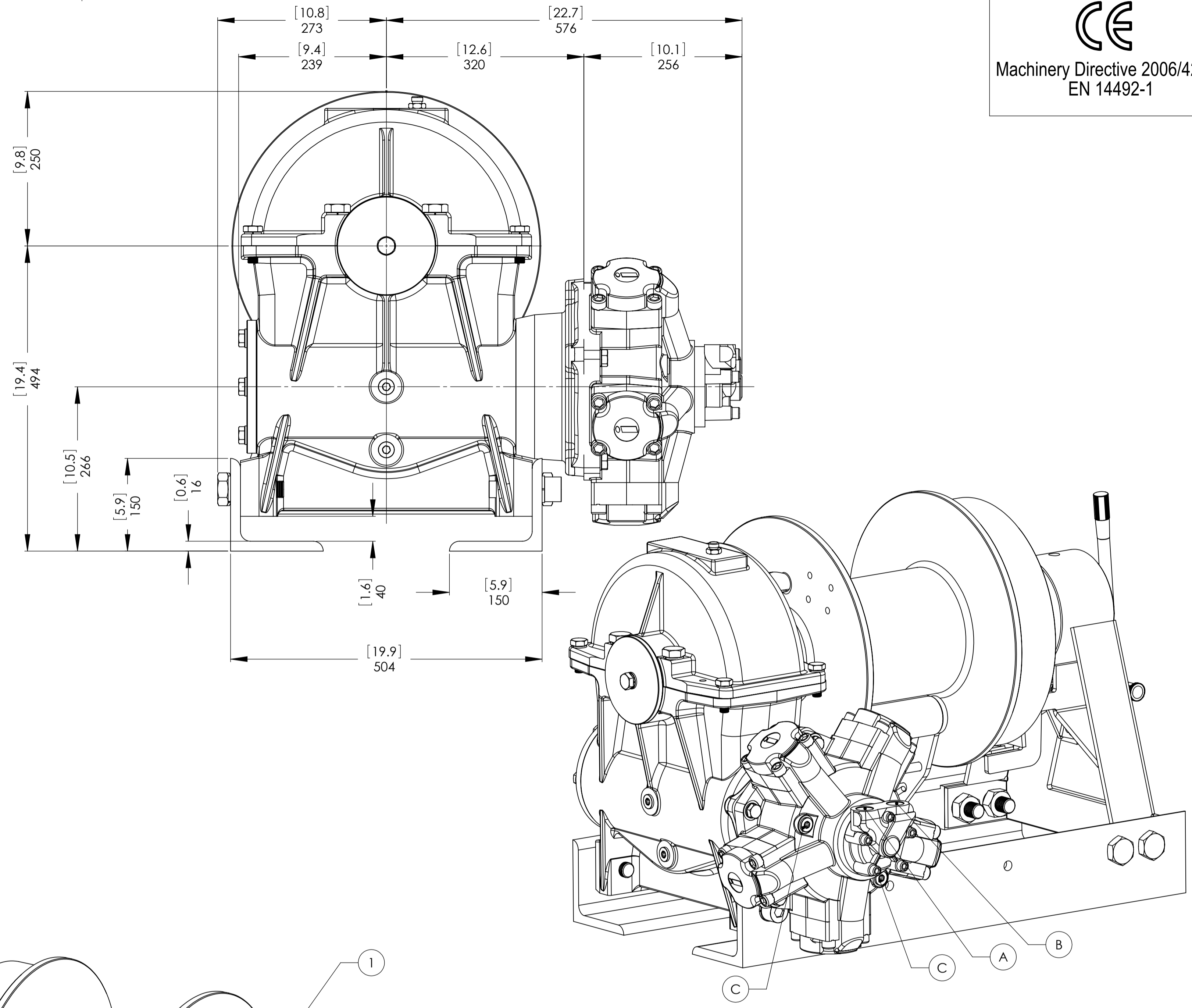
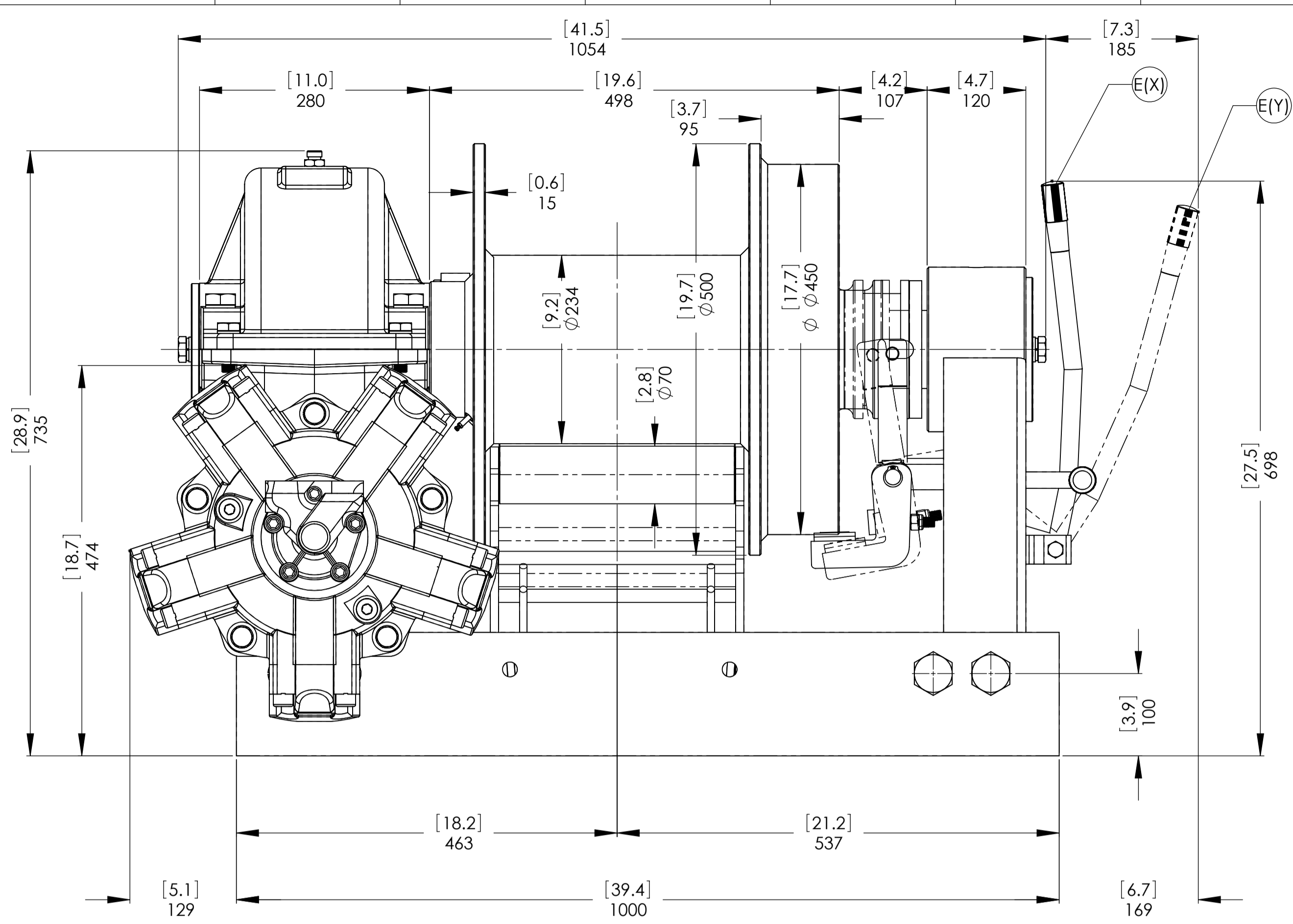
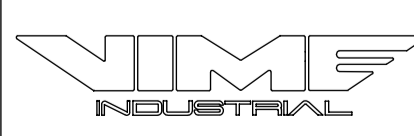
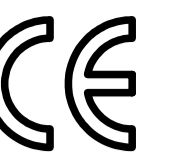


Machinery Directive 2006/42/CE
EN 14492-1

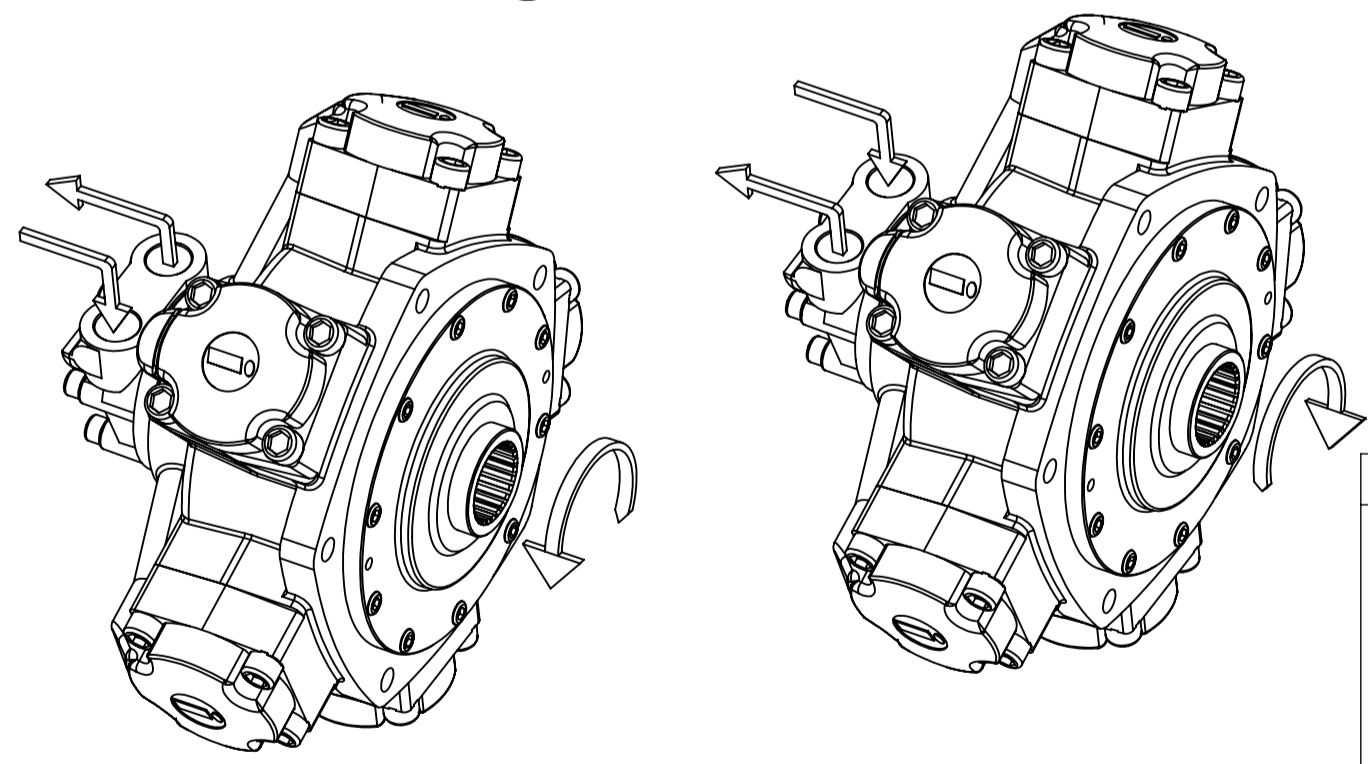
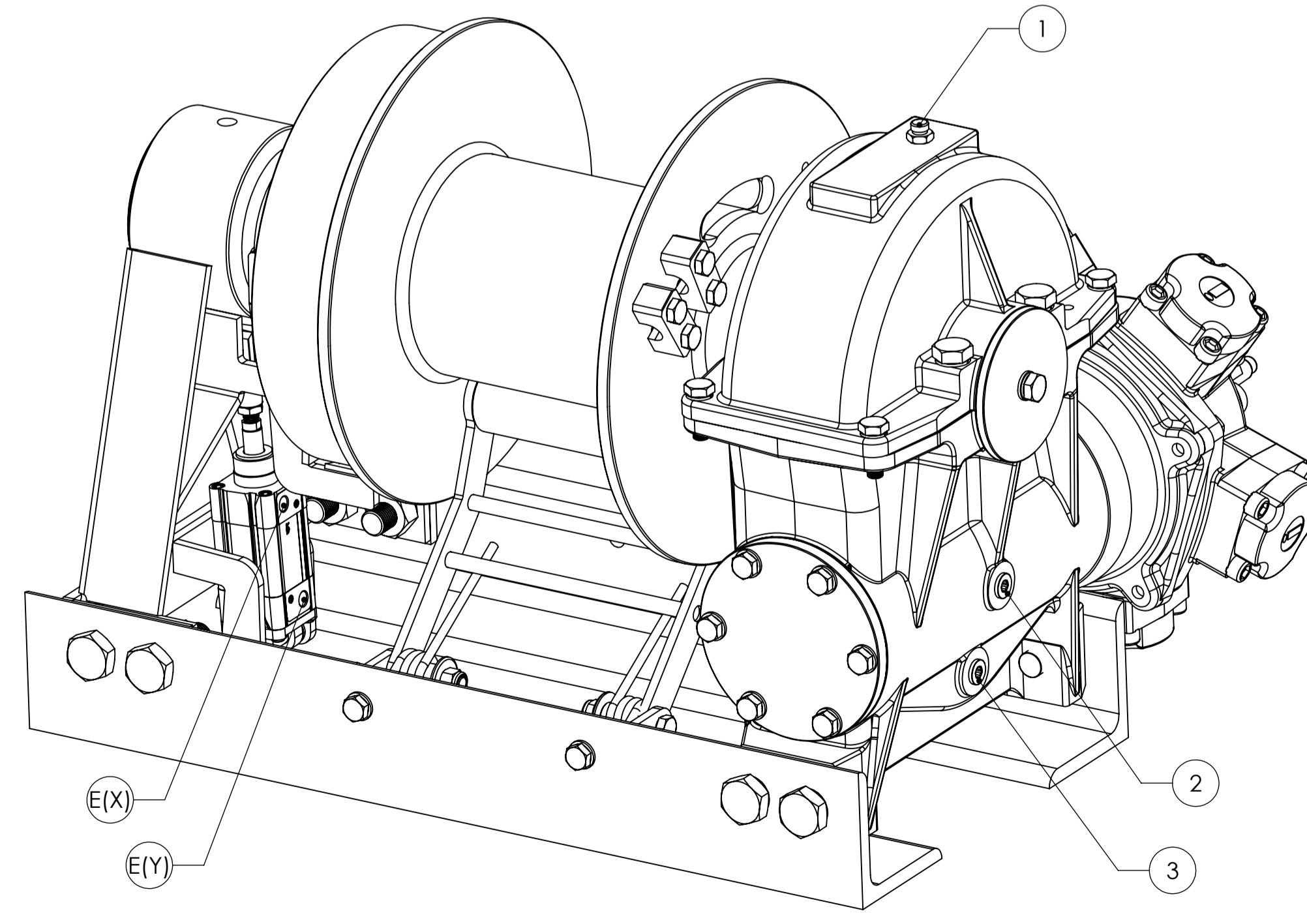
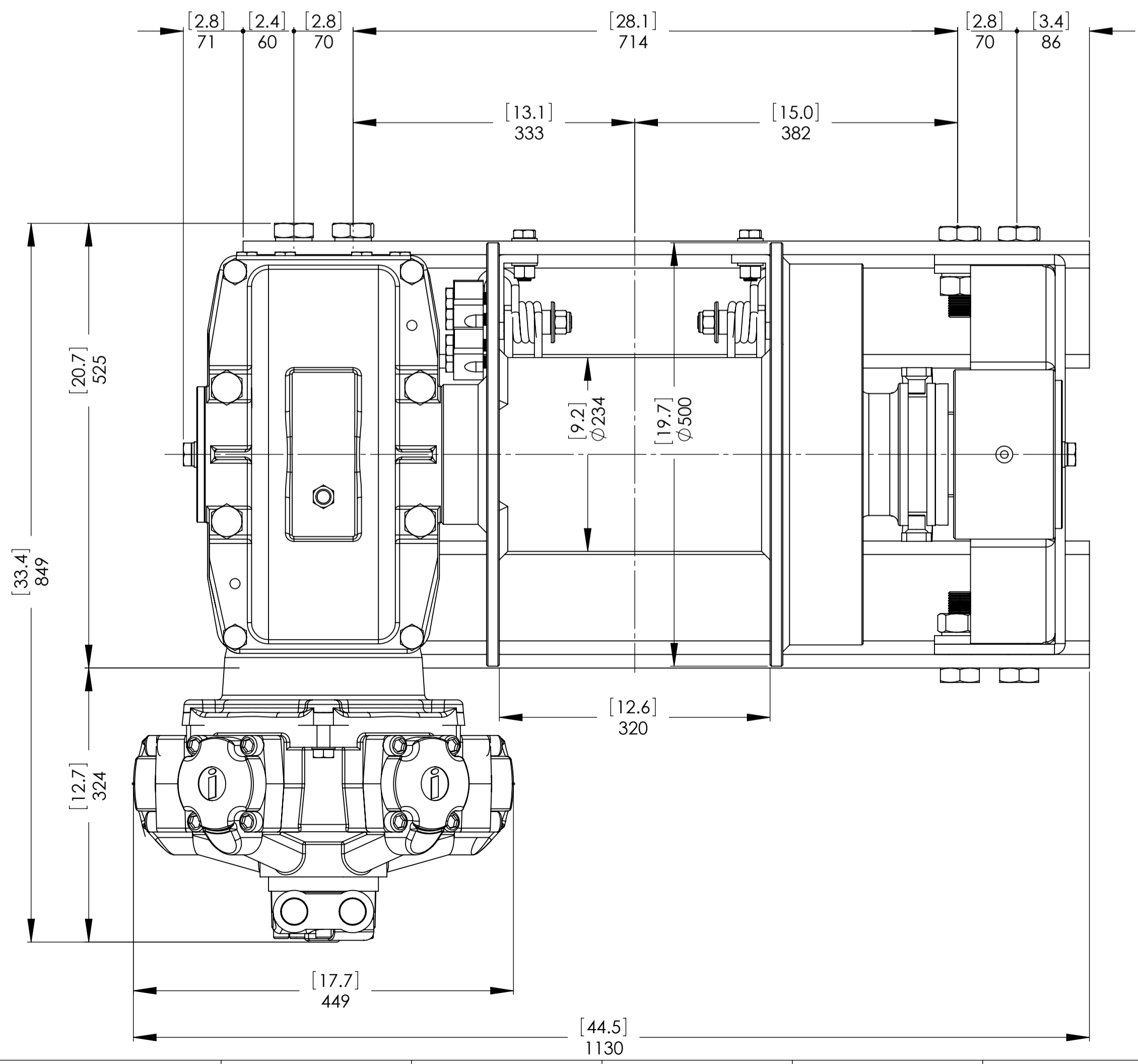
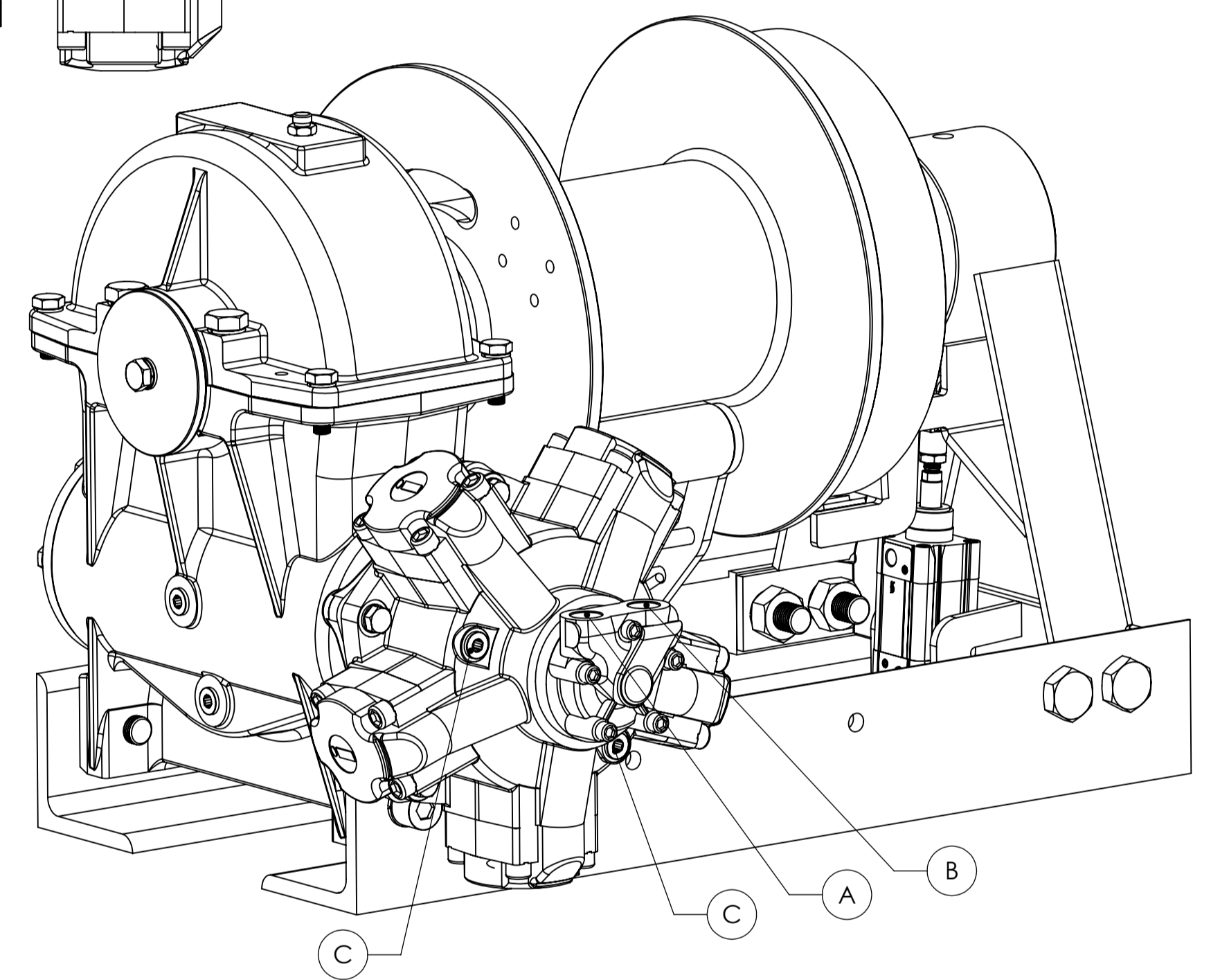
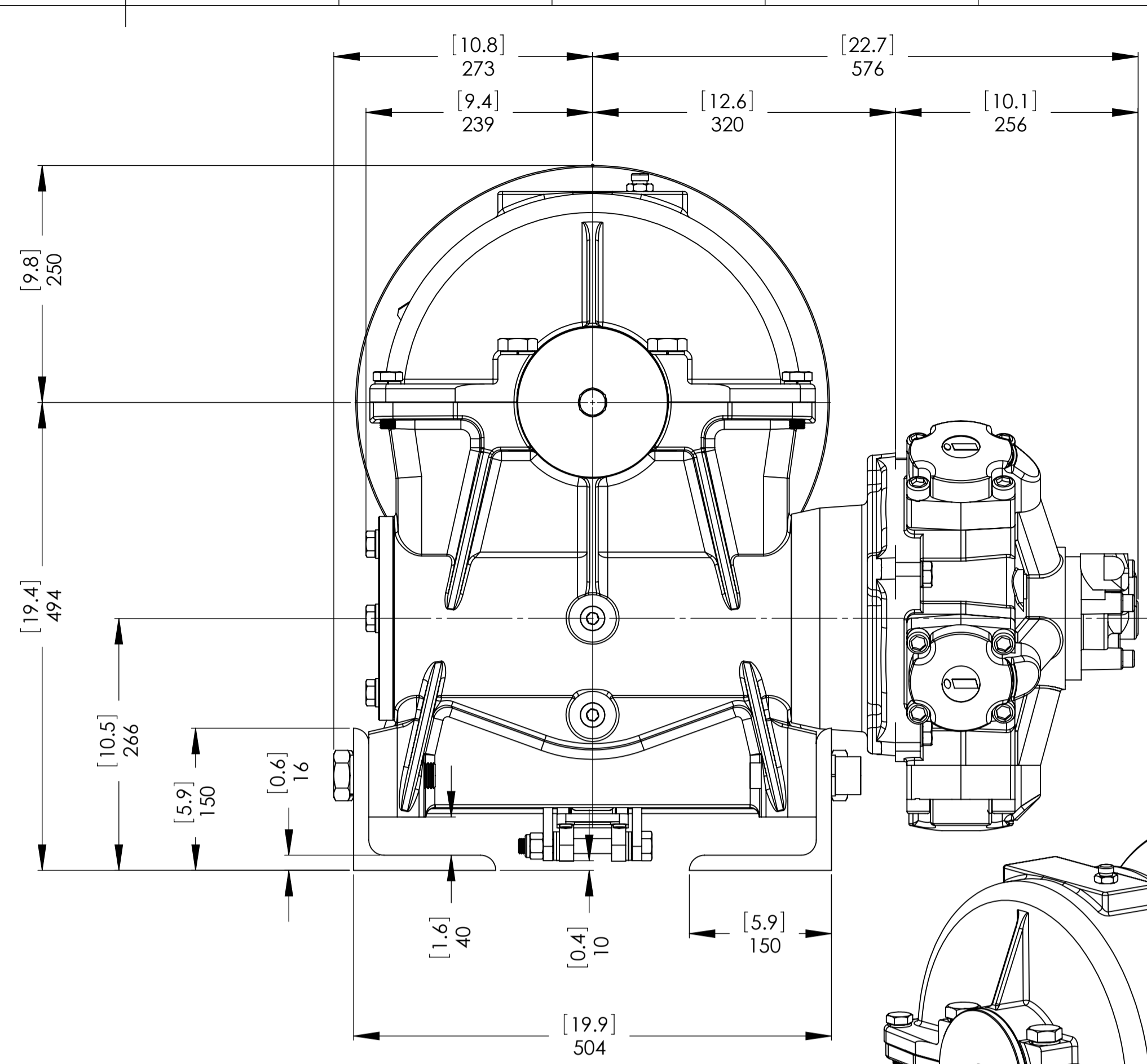
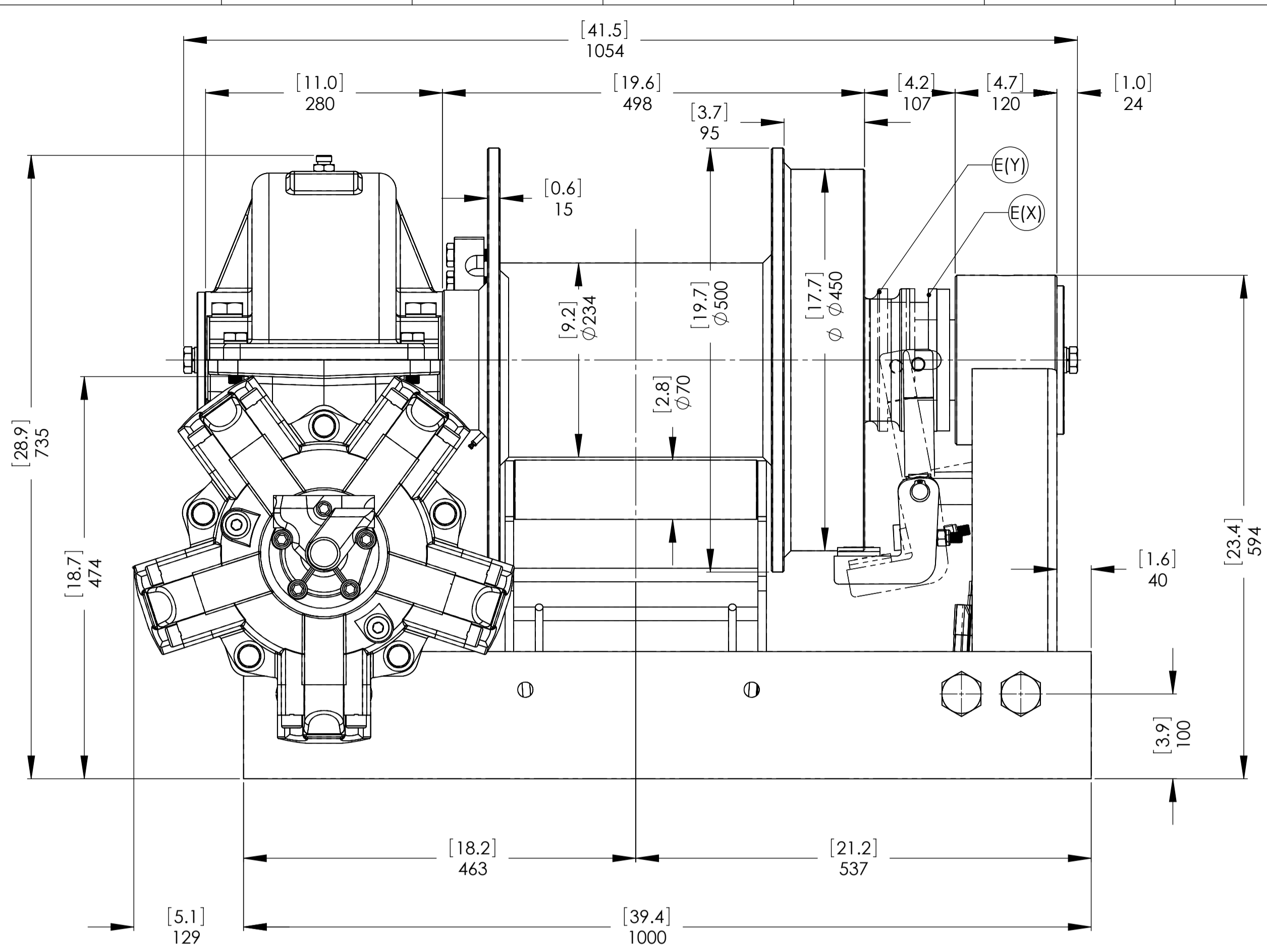


CONNECTIONS	
A	1" G
B	1" G
C	1/2" G
E (X)	DISENGAGED
E (Y)	ENGAGED

WINCH MODEL	PH	WINCH GROUP	WORM GEAR	PLUGS
Pulling capacity	30000 Kg	Date	Modification	1.Fill 1/2" G
Max.Oil flow	200 Lt./Min.			2.Level 1/2" G
Speed Line - first layer	4.1 Mt./Min.			3.Drain 1/2" G
Speed Line - top layer	7.5 Mt./Min.	DANGEROUS: Do not use winch to lift support or transport personnel.		
				SCALE 1:4.5
				WEIGHTS
				Winch (without oil) 630 Kgs
				Heavy-duty
				Roller fairlead
				Rope tensioner 10 Kgs
				CODE PH300I1000CEP
 Funo - Bologna (Italy) www.vimeindustrial.com The Quality is Transparent				DATE 13/04/2011 VIME Industrial reserves the right to improve its products through changes in designed or materials as it may seem considerable without notice.



Machinery Directive 2006/42/CE
EN 14492-1



CONNECTIONS	
A	1" G
B	1" G
C	1/2" G
E (X) DISENGAGED	3/8" G
E (Y) ENGAGED	3/8" G

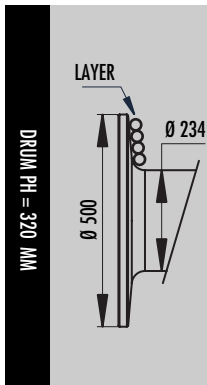
WINCH MODEL	PH	WINCH GROUP	WORM GEAR	PLUGS
Pulling capacity	30000 Kg	Date	Modification	1.Fill 1/2" G
Max.Oil flow	200 Lt./Min.			2.Level 1/2" G
Speed Line - first layer	4.1 Mt./Min.			3.Drain 1/2" G
Speed Line - top layer	7.5 Mt./Min.	DANGEROUS: Do not use winch to lift support or transport personnel.		
				SCALE 1:4.5
				WEIGHTS
				Winch (without oil) 630 Kgs
				Heavy-duty
				Roller fairlead -----
				Rope tensioner 10 Kgs
				COD. PH30011000CEAP
 Funo - Bologna (Italy) www.vimeindustrial.com		Gear ratio 1/37 Radial pistons hydr. motor 1000 cc Working pressure 200 bar Drum size 320 mm Drum clutch Air- operated		DATE 13/04/2011
<i>The Quality is Transparent</i>		VIME Industrial reserves the right to improve its products through changes in designed or materials as it may seem considerable without notice.		

1.4.13 PH 30000 CE WINCH TECHNICAL DATA

RATIO	WIRE ROPE SIZE [MM]	LAYER	LINE PULL [KGS]
37:1	26*	1	30.000
		2	24.920
		3	21.310
		4	18.615
		5	16.525

OIL SUPPLY [LT/MIN]	DRUM REVOLUTION [RPM]	LINE SPEED [MT/MIN]				
		1	2	3	4	5
120	3,1	2,5	3,0	3,5	4,0	4,5
160	4,2	3,3	4,0	4,7	5,4	6,0
198	5,1	4,1	4,9	5,8	6,6	7,5


WIRE ROPE MIN. BREAKING LOAD EN 14492-1 [KG]	60.000
--	--------




LAYER	DRUM DIAMETER [MM]		WIRE ROPE ON LAYER [MT]		WIRE ROPE QUANTITY [MT]	
	00 MM	26 MM	00 MM	26 MM	00 MM	26 MM
	5	-	468	-	16,4	-
4	-	416	-	14,6	-	47,3
3	-	364	-	12,8	-	32,7
2	-	312	-	10,9	-	20,0
1	-	260	-	9,1	-	9,1
0	-	234	-	-	-	-

WIRE ROPE CAPACITY [MT]		MAX. WIRE ROPE CAPACITY EN 14492-1 [MT]		MAX. WIRE ROPE CAPACITY [MT]	
00 MM	26 MM	00 MM	26 MM	00 MM	26 MM
-	40	-	47**	-	63

DESCRIPTION	WEIGHT
	[KGS]
WINCH (WITHOUT CABLE)	630
ACCESSORY : ROLLERFAILREAD	-
ACCESSORY : CABLE TENSIONER	10

NOTE 

Specifications are subject to change without notification and without incurring obligation. Specifications in this publication are theoretical and may vary depending on hydraulic system, environment, etc.

NOTE 

*Wire rope size must be respected. Recommended wire rope min. tensile strength 2160 N/mm².
Wire rope minimum breaking load must be at least double of winch max. pulling capacity.

** Max. wire rope capacity according with EN 14492-1.

1.4.14 PH 30000 CE WINCH PERFORMANCE CHARTS AT THE 1ST LAYER

