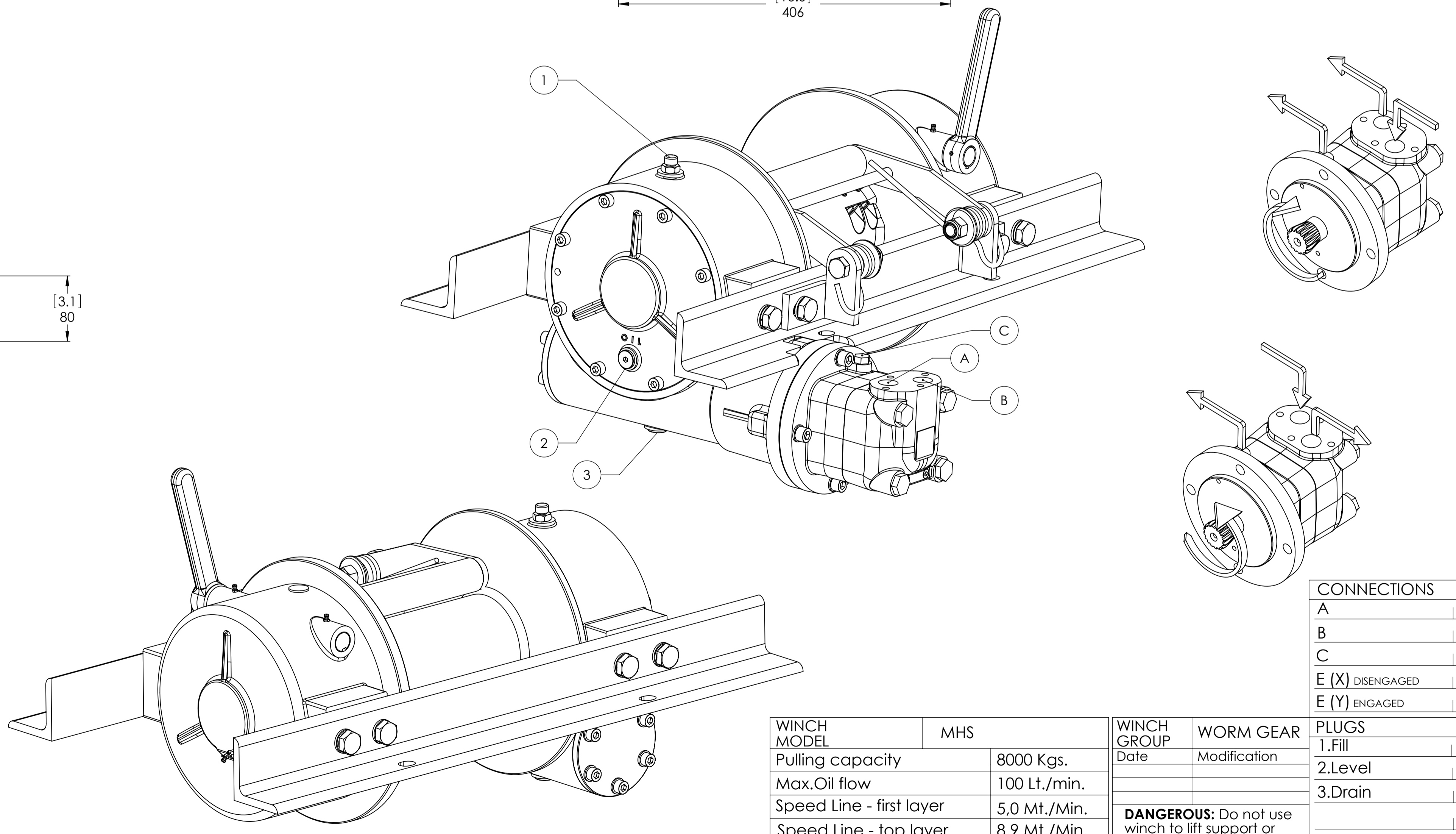
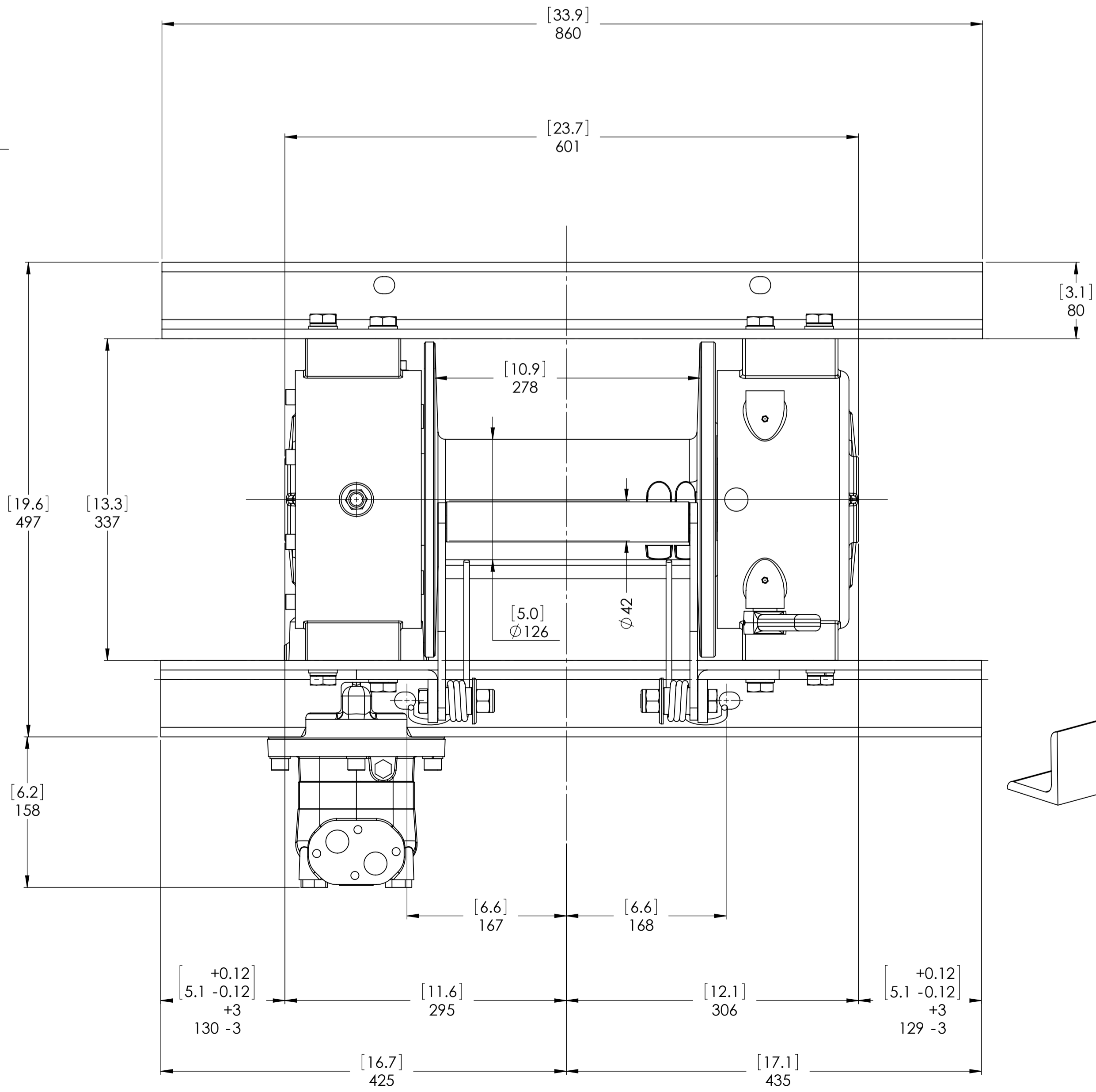
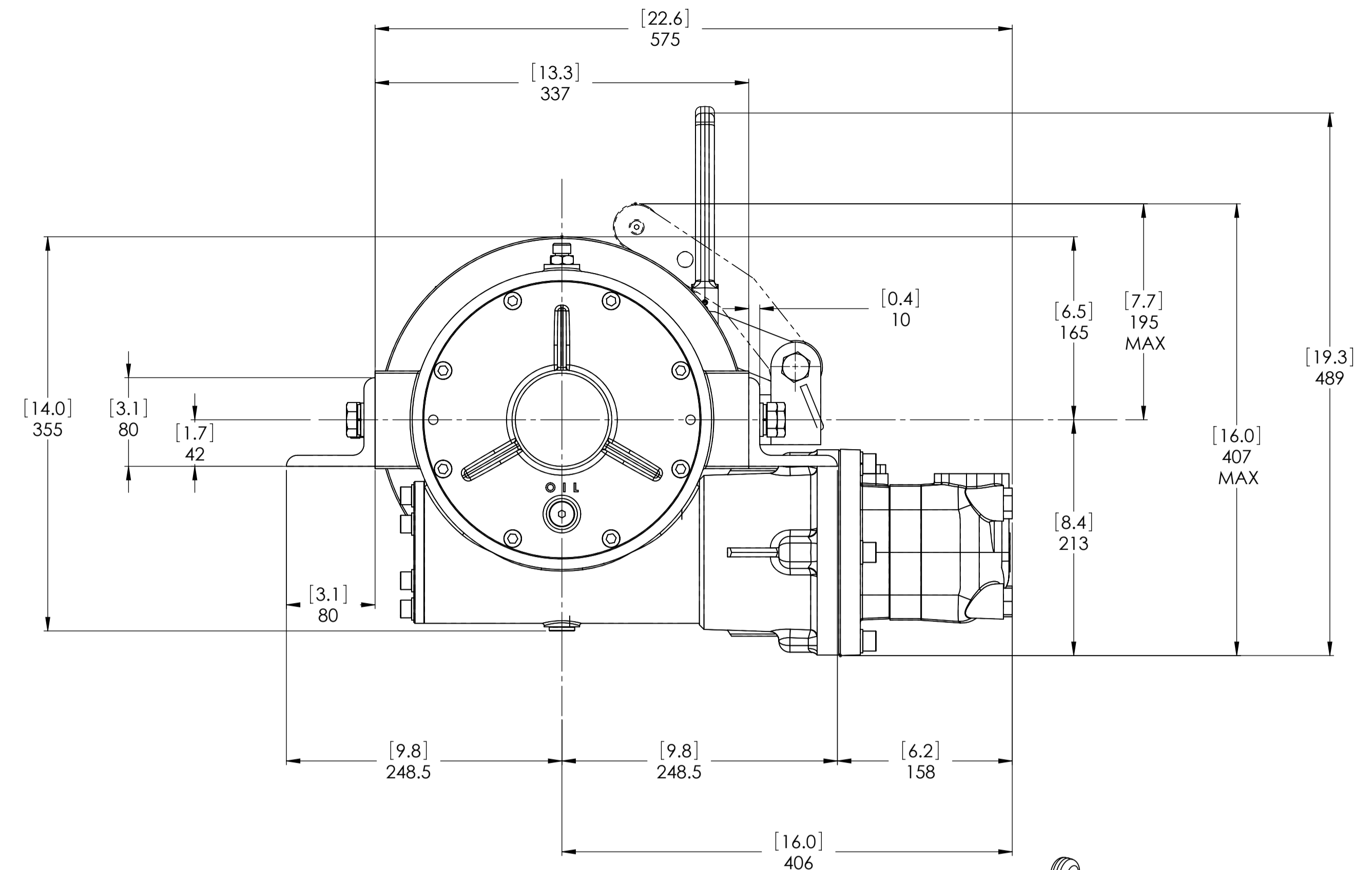
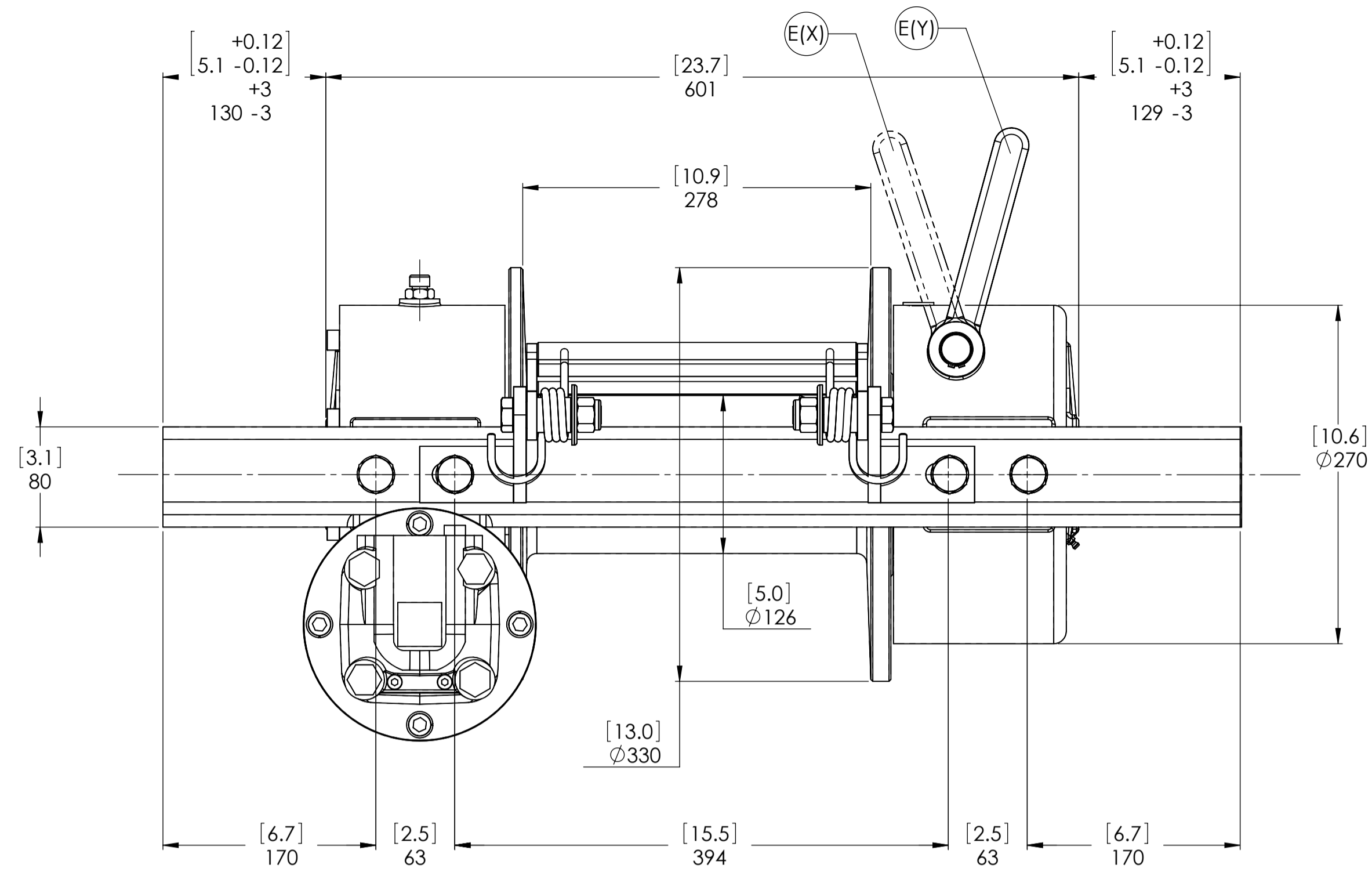


Machinery Directive 2006/42/CE
EN 14492-1



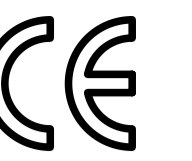
CONNECTIONS	
A	3/4"G
B	3/4"G
C	1/4"G
E (X) DISENGAGED	-----
E (Y) ENGAGED	-----

WINCH MODEL	MHS	WINCH GROUP	WORM GEAR	PLUGS
Pulling capacity	8000 Kgs.	Date	Modification	1.Fill 3/8"G
Max.Oil flow	100 Lt./min.			2.Level 3/8"G
Speed Line - first layer	5,0 Mt./Min.			3.Drain 3/8"G
Speed Line - top layer	8,9 Mt./Min.			
		DANGEROUS: Do not use winch to lift support or transport personnel.		SCALE 1:3.5
		Gear ratio	35:1	WEIGHTS
		Orbital hydr. motor	250 cc	Winch 125 Kgs.
		Working pressure	160 Bar	Heavy-duty Roller fairlead 28,9 Kgs.
		Drum size	278 mm	Rope tensioner 4 Kgs.
		Drum clutch	Manual	
				DATE 23/07/2010
				COD. MHS80D250P

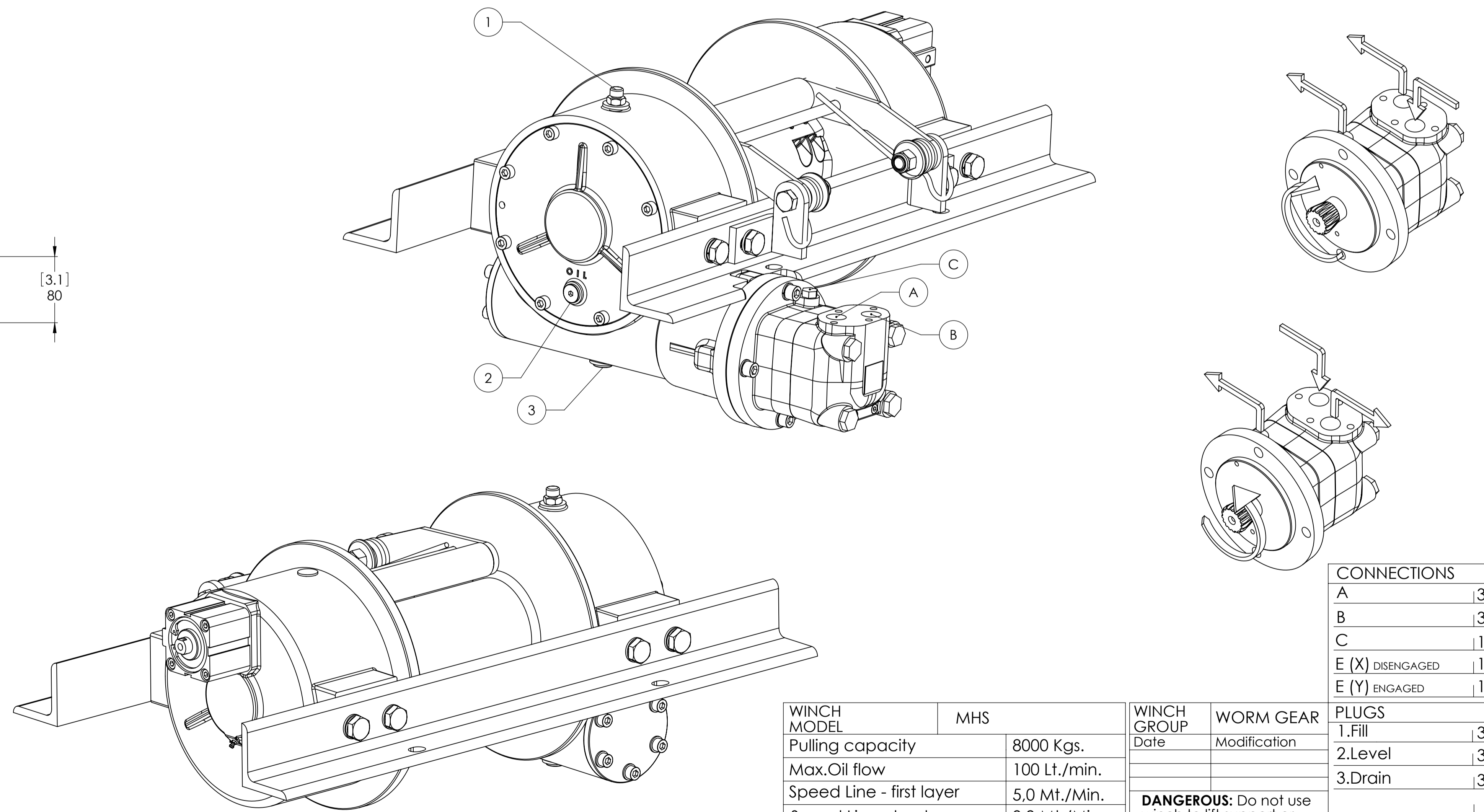
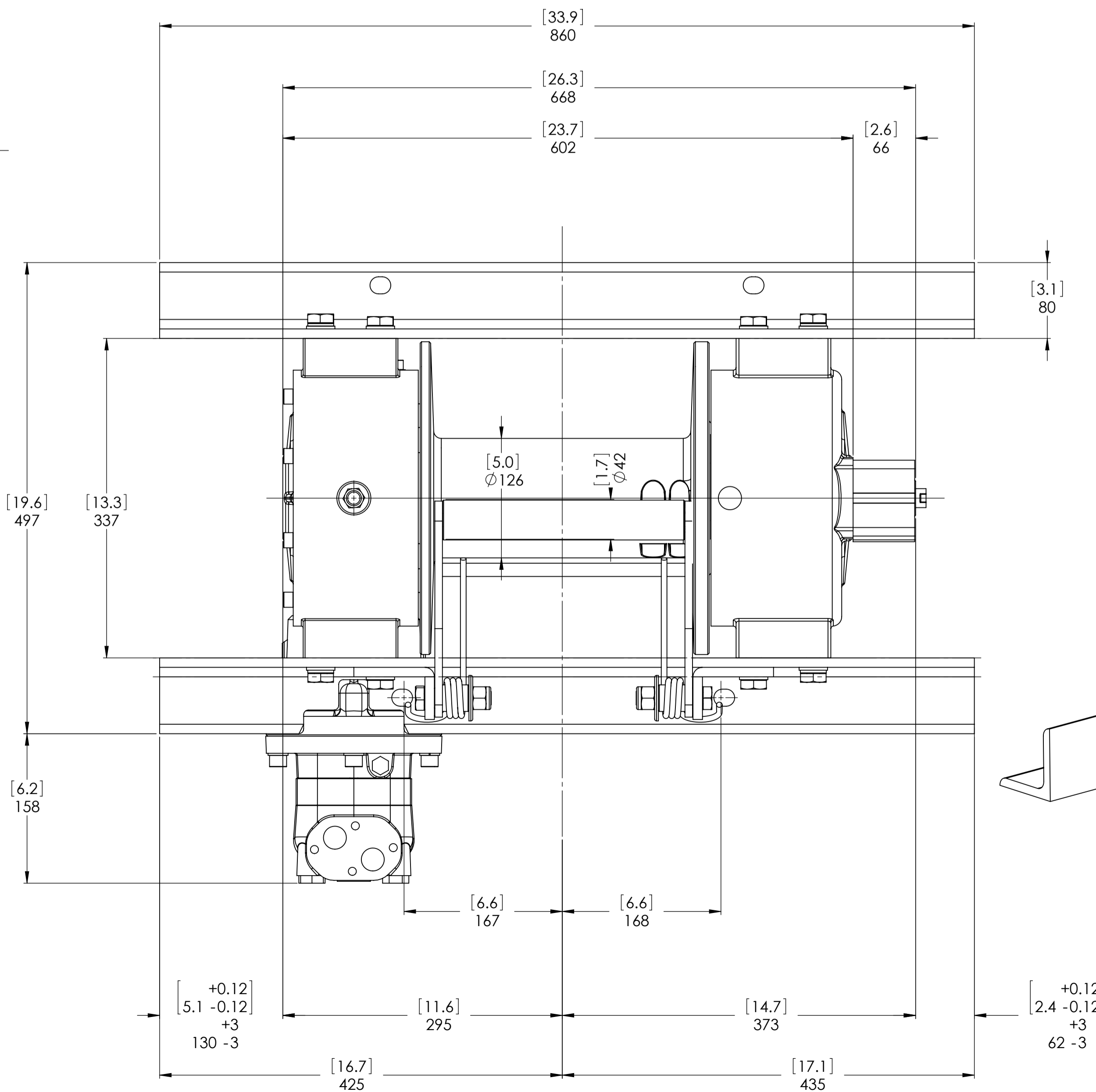
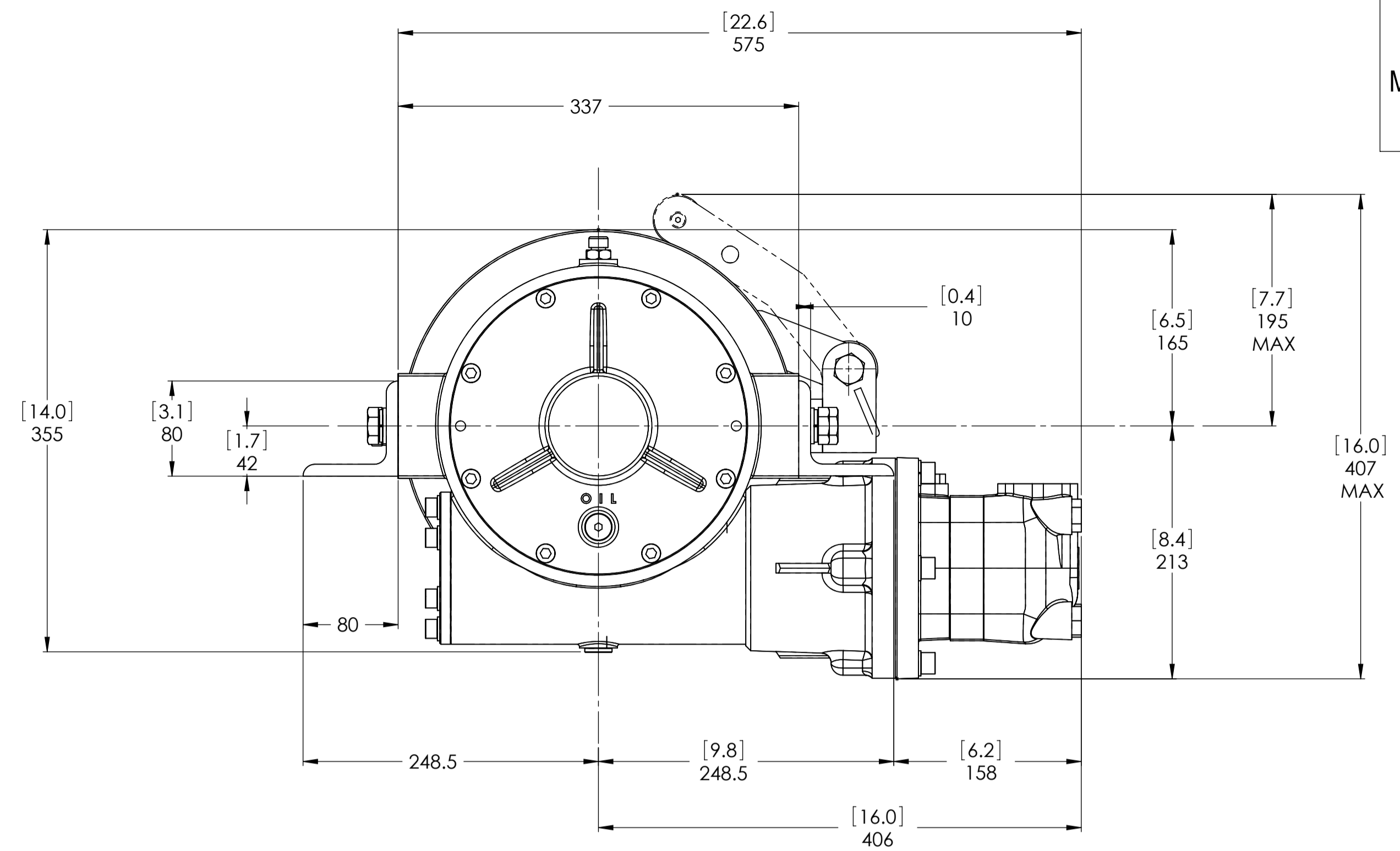
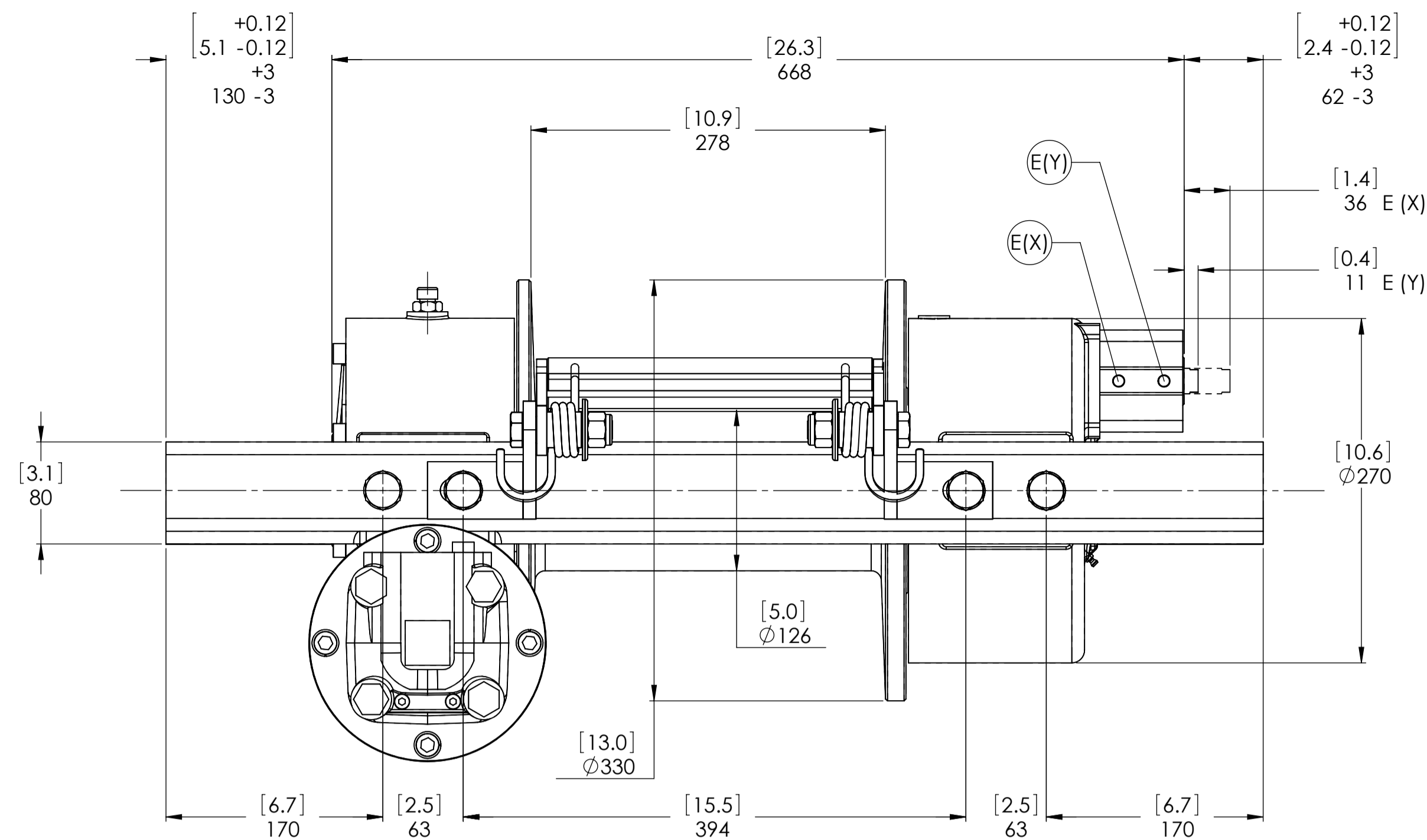


The Quality is Transparent

VIME Industrial reserves the right to improve its products through changes in designed or materials as it may seem desirable without notice.

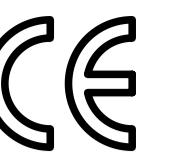


Machinery Directive 2006/42/CE
EN 14492-1

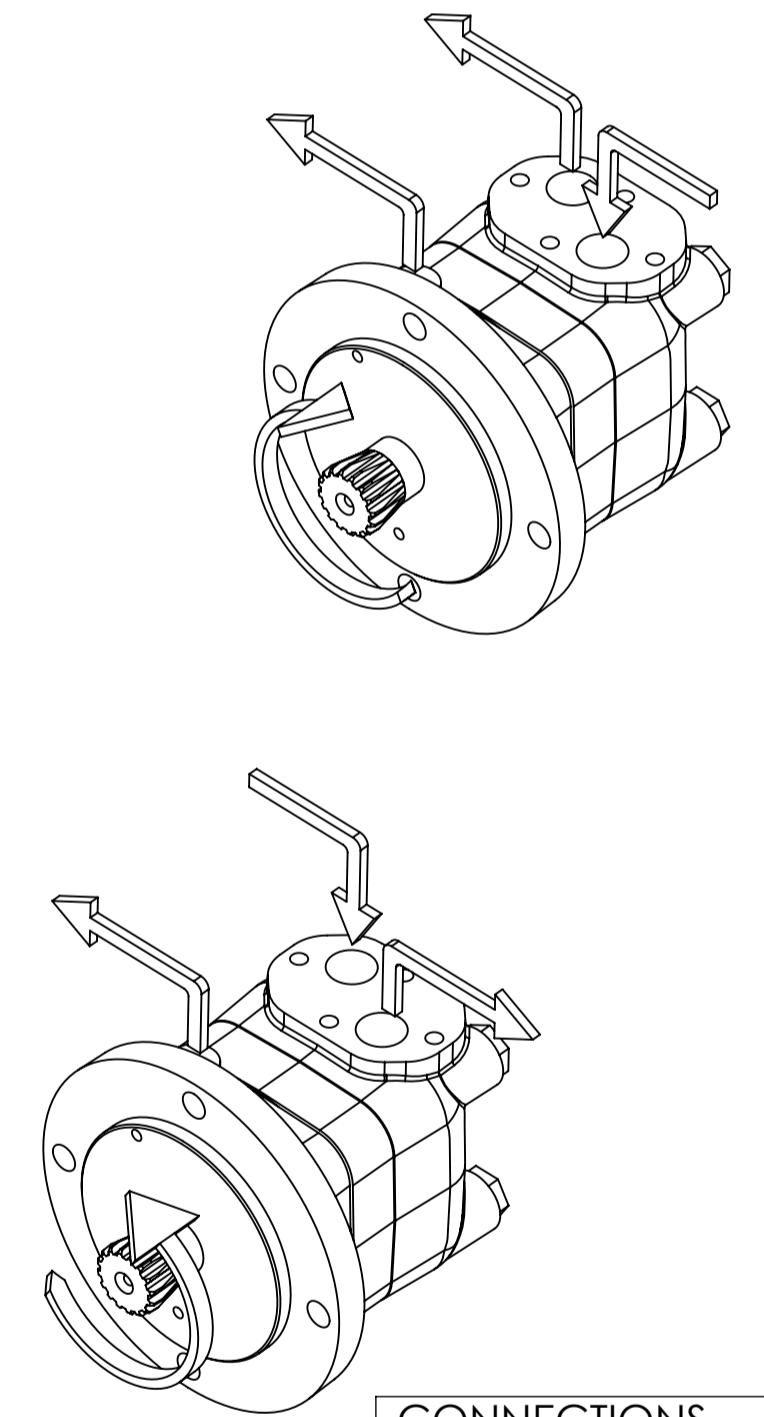
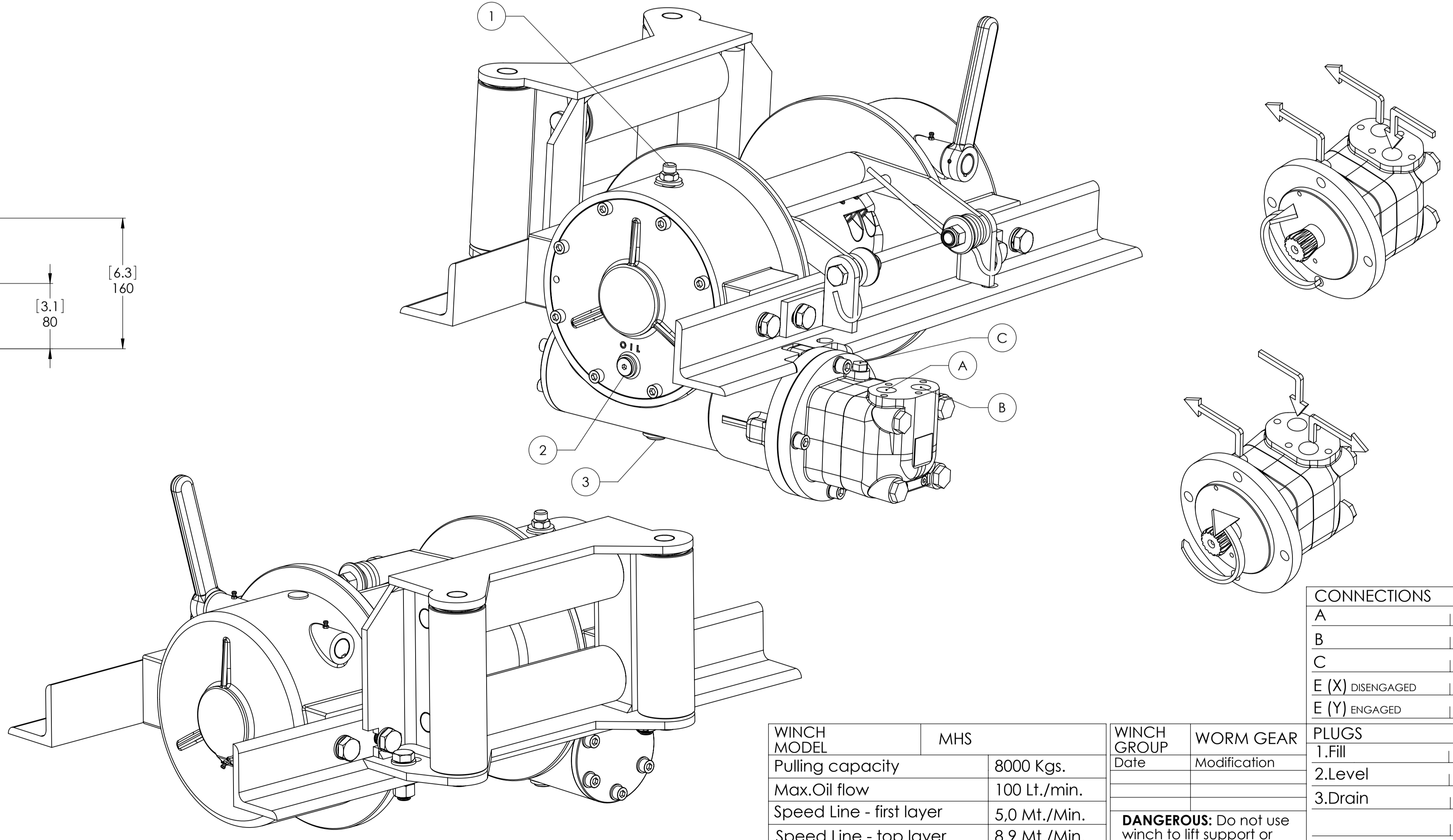
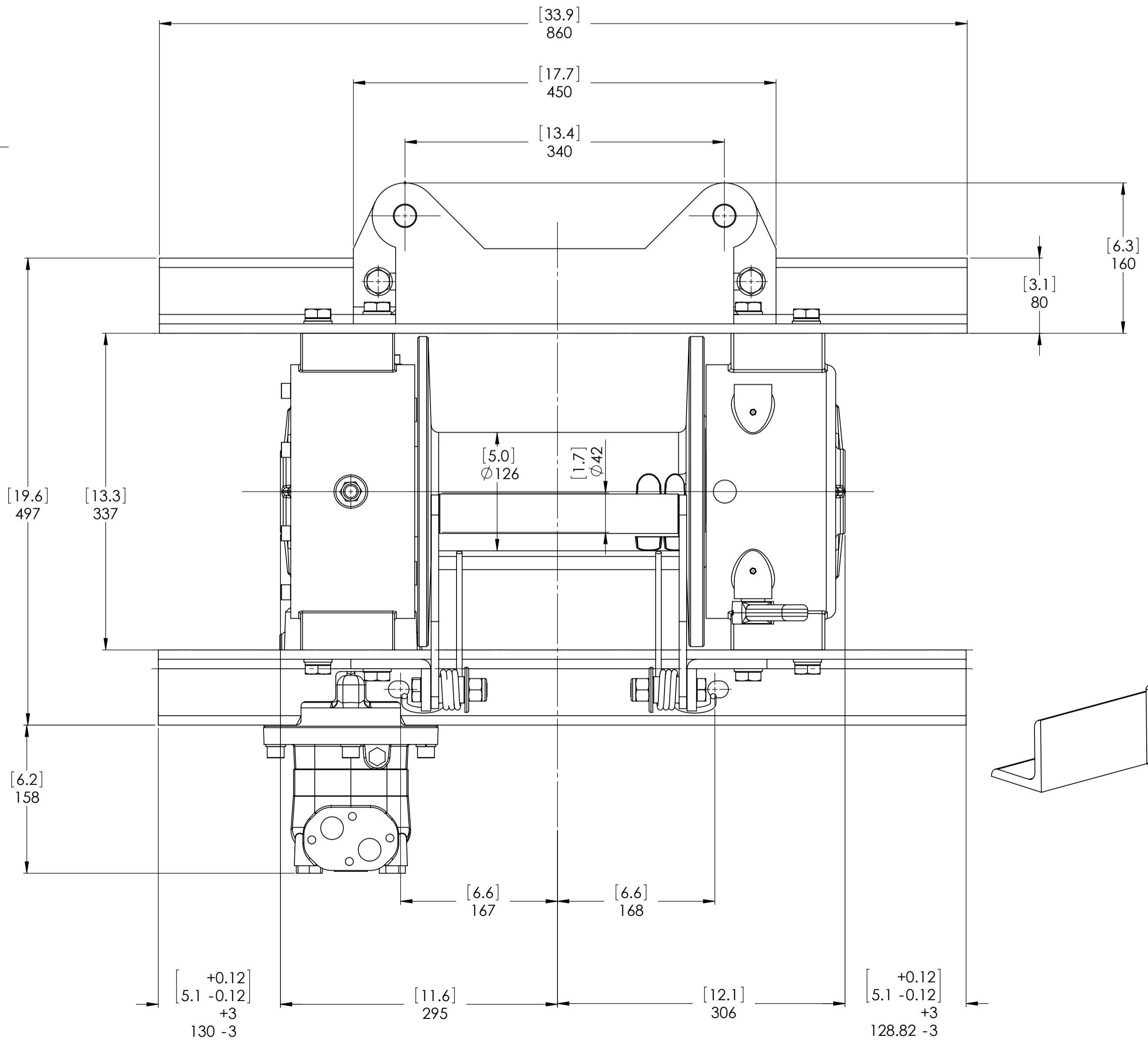
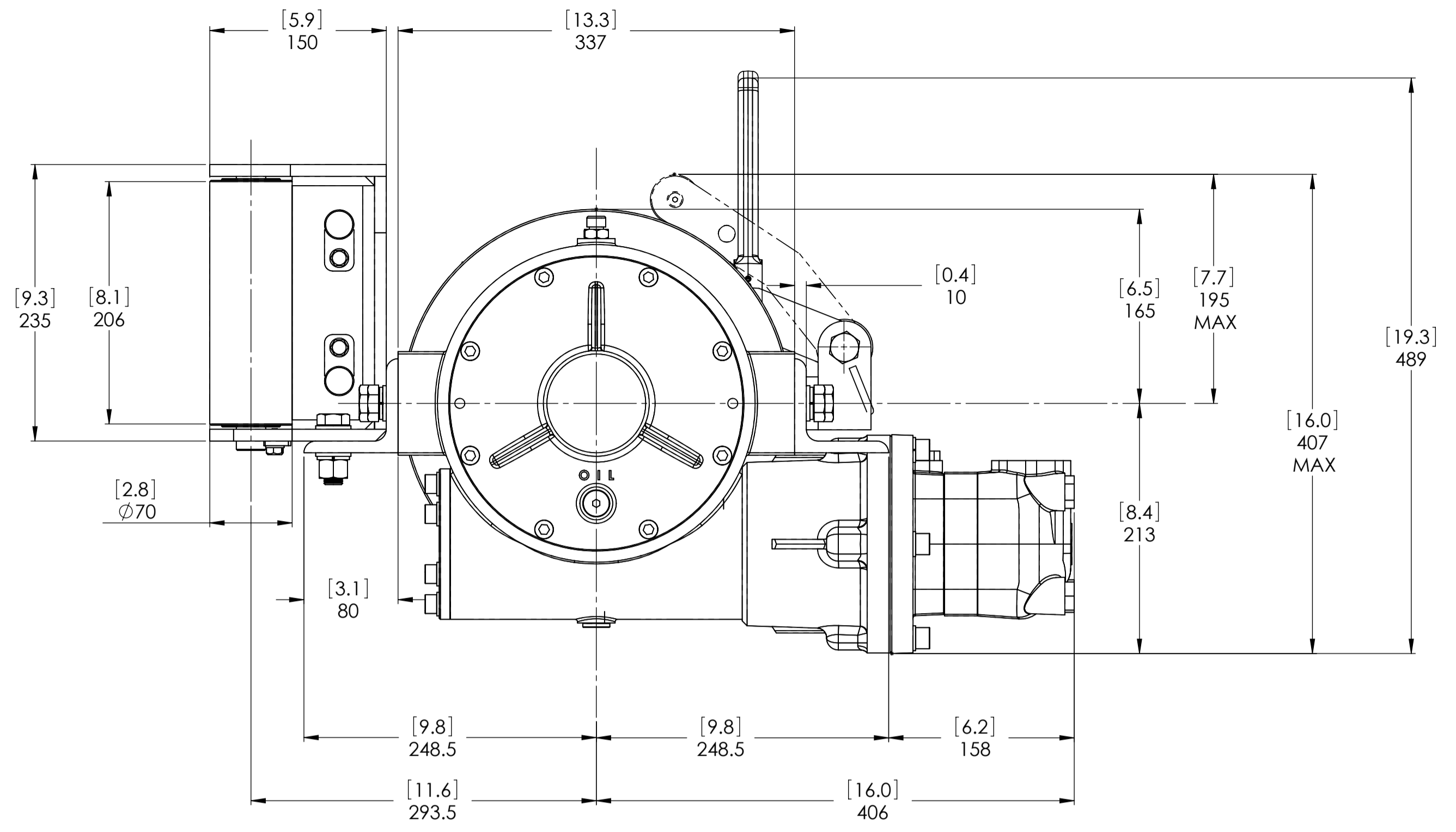
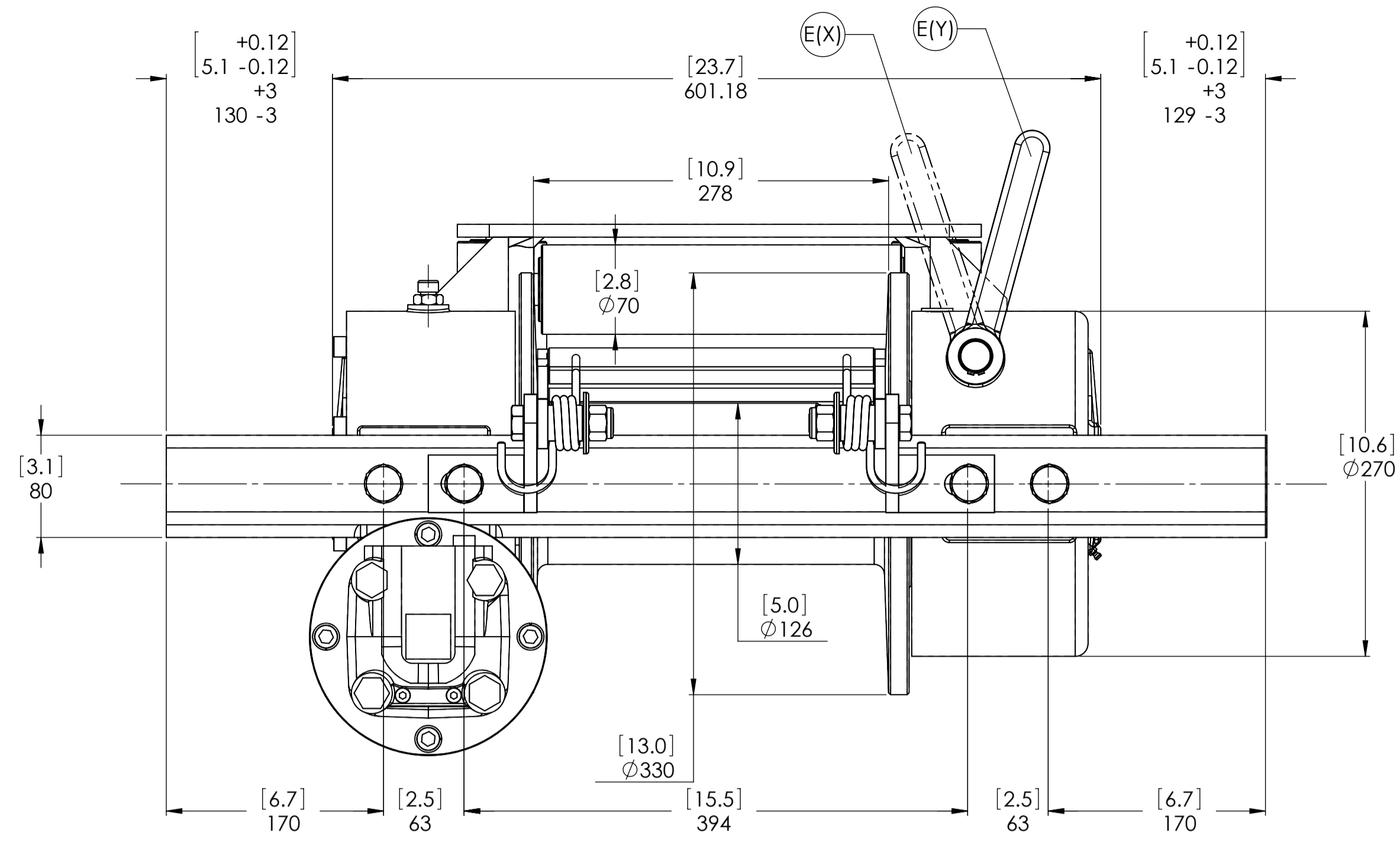


CONNECTIONS	
A	3/4"G
B	3/4"G
C	1/4"G
E (X) DISENGAGED	1/8"G
E (Y) ENGAGED	1/8"G

WINCH MODEL	MHS	WINCH GROUP	WORM GEAR	PLUGS
Pulling capacity	8000 Kgs.	Date	Modification	1.Fill 3/8"G
Max.Oil flow	100 Lt./min.			2.Level 3/8"G
Speed Line - first layer	5,0 Mt./Min.			3.Drain 3/8"G
Speed Line - top layer	8,9 Mt./Min.	DANGEROUS: Do not use winch to lift support or transport personnel.		
 Funo - Bologna (Italy) www.vimeindustrial.com The Quality is Transparent				SCALE 1:3.5
Gear ratio 35:1 Orbital hydr. motor 250 cc Working pressure 160 Bar Drum size 278 mm Drum clutch Pneumatic				WEIGHTS Winch 125 Kgs. Heavy-duty Roller fairlead 28.9 Kgs. Rope tensioner 4 Kgs.
VIME Industrial reserves the right to improve its products through changes in designed or materials as it may seem desirable without notice.				DATE 23/07/2010 COD. MHS80D250AP

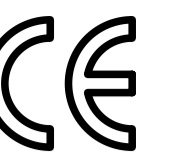


Machinery Directive 2006/42/CE
EN 14492-1

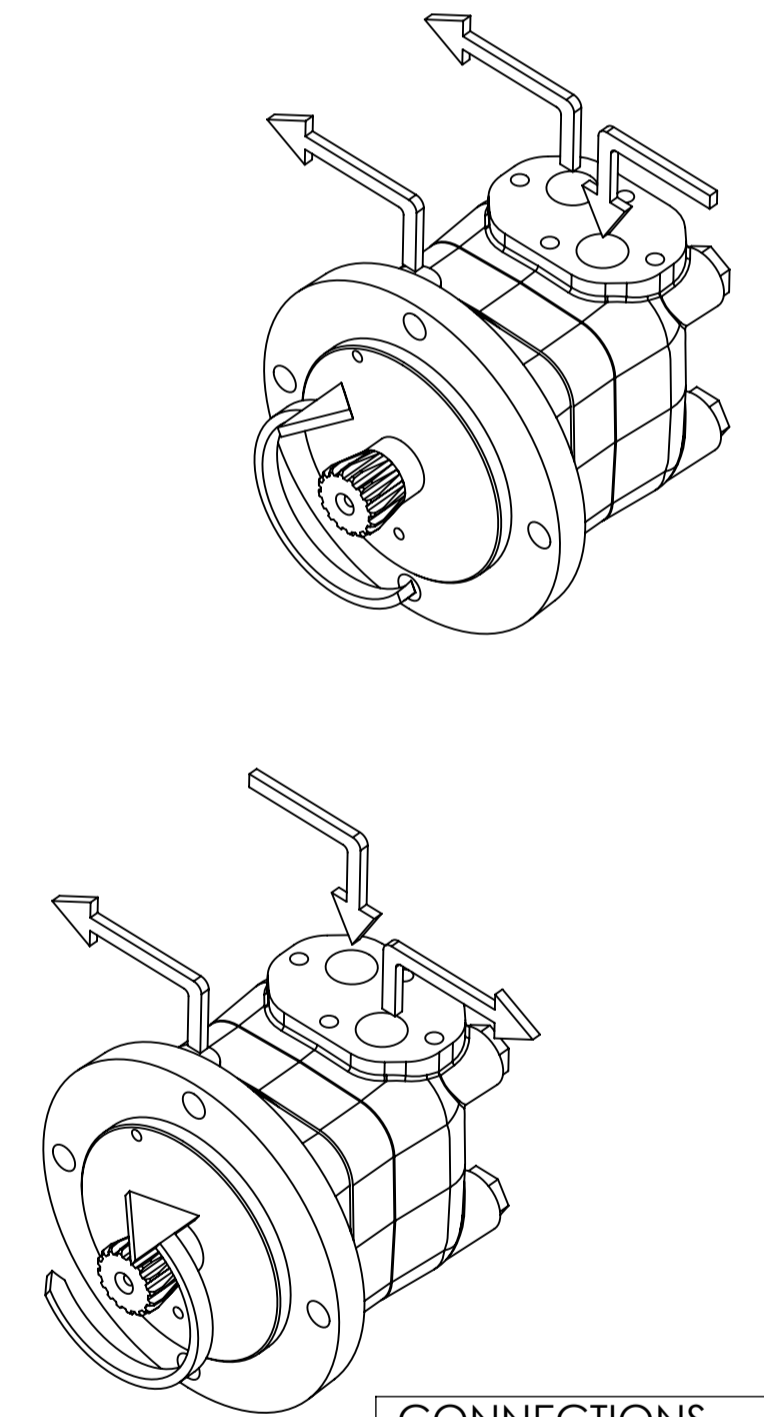
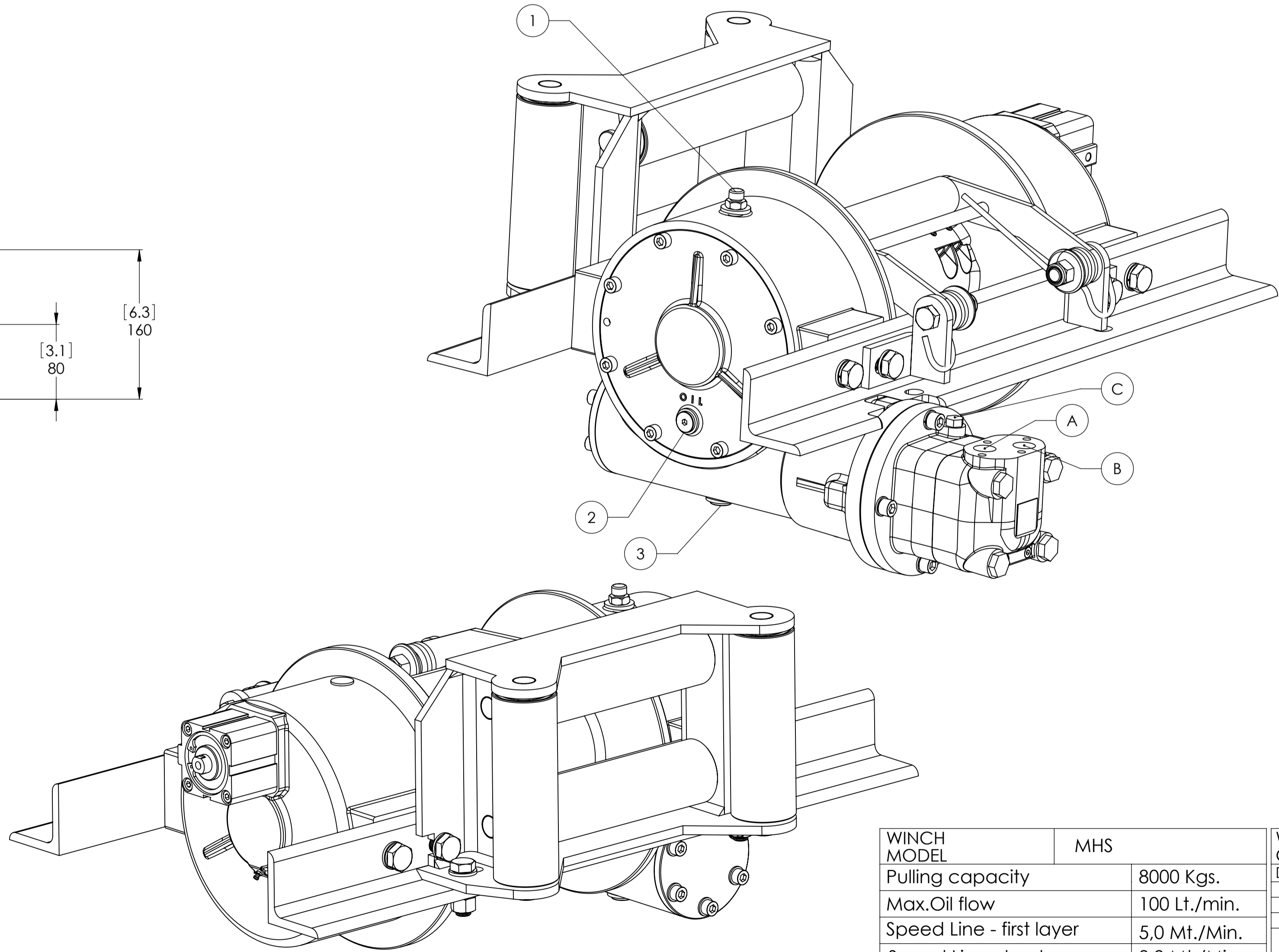
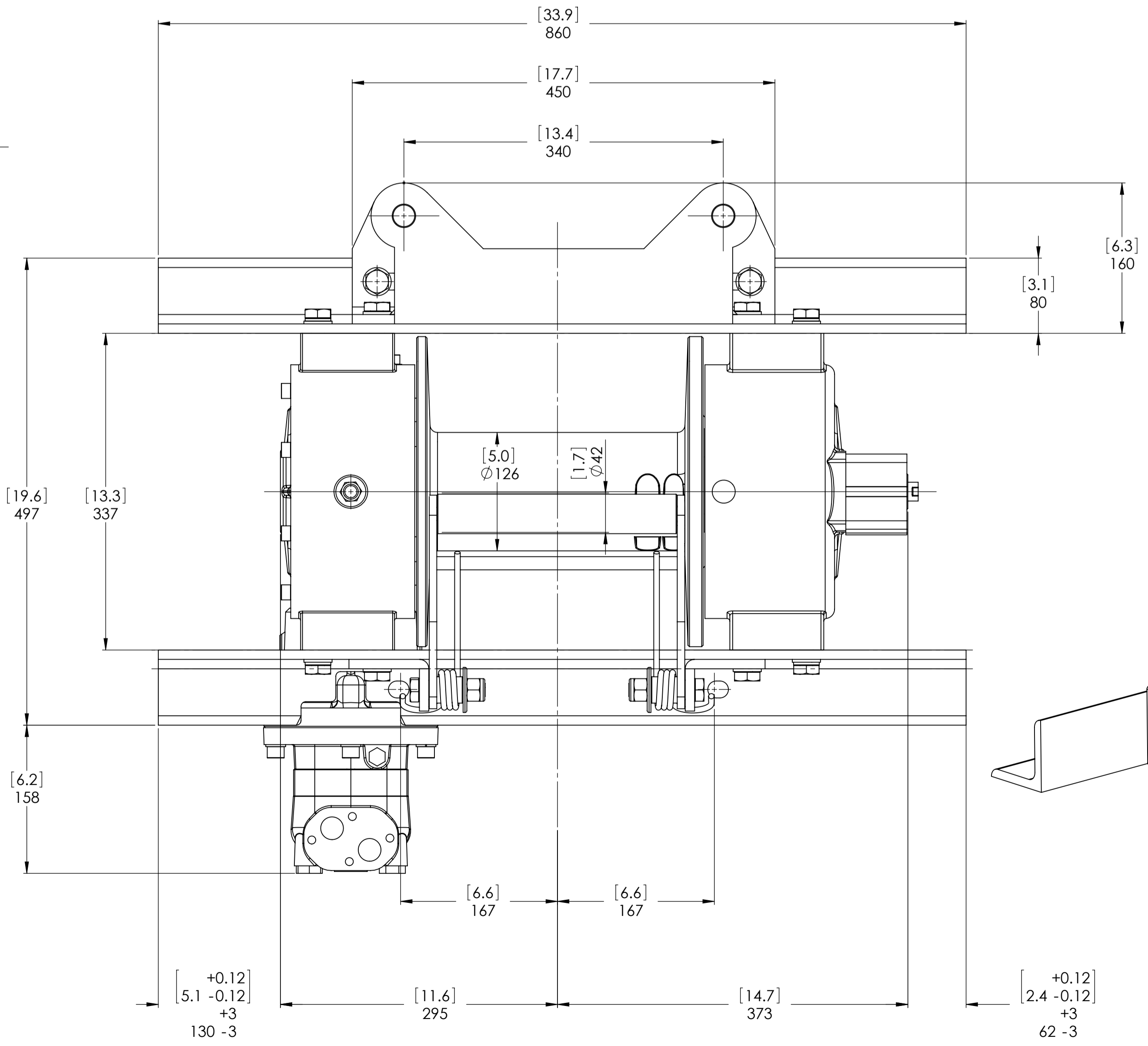
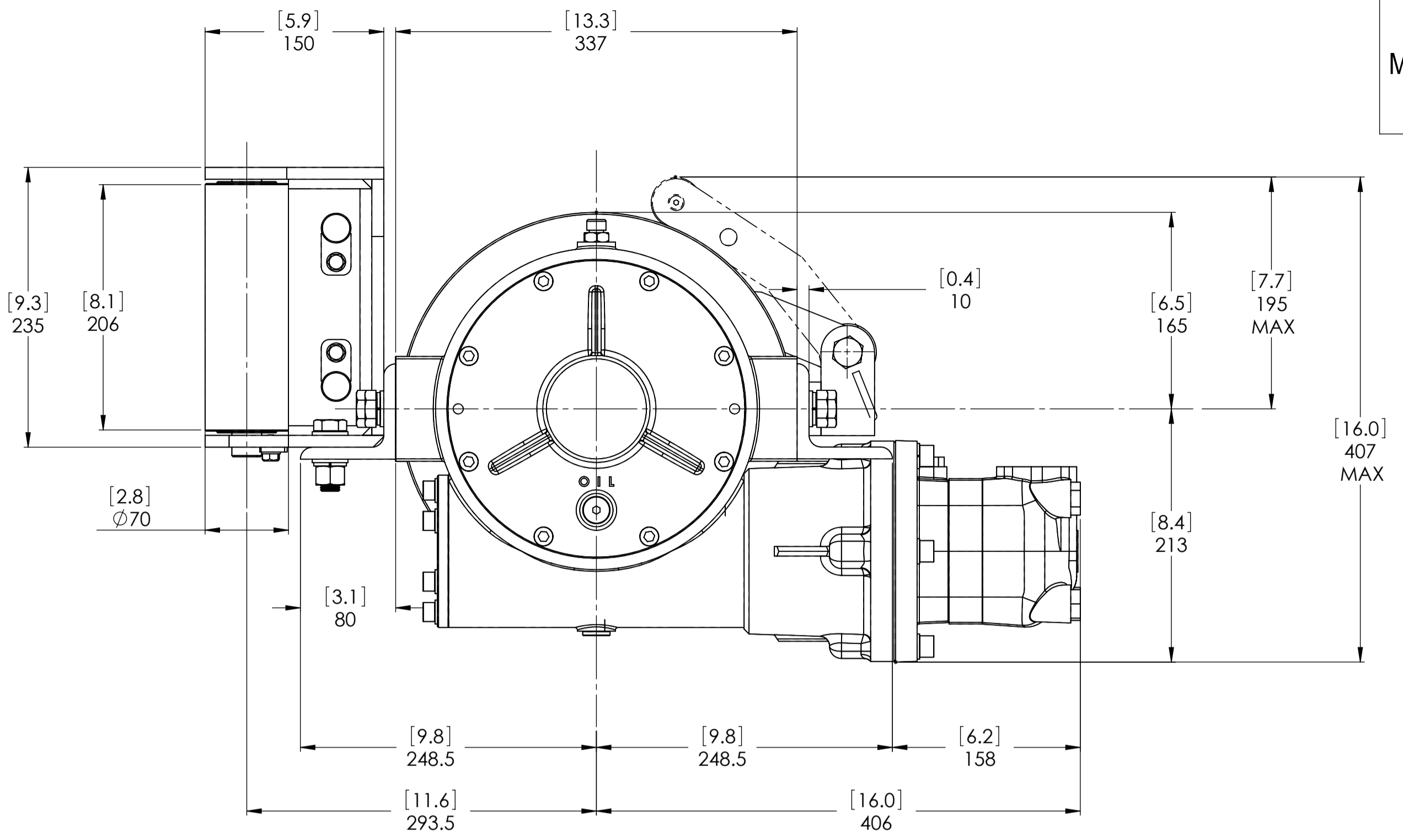
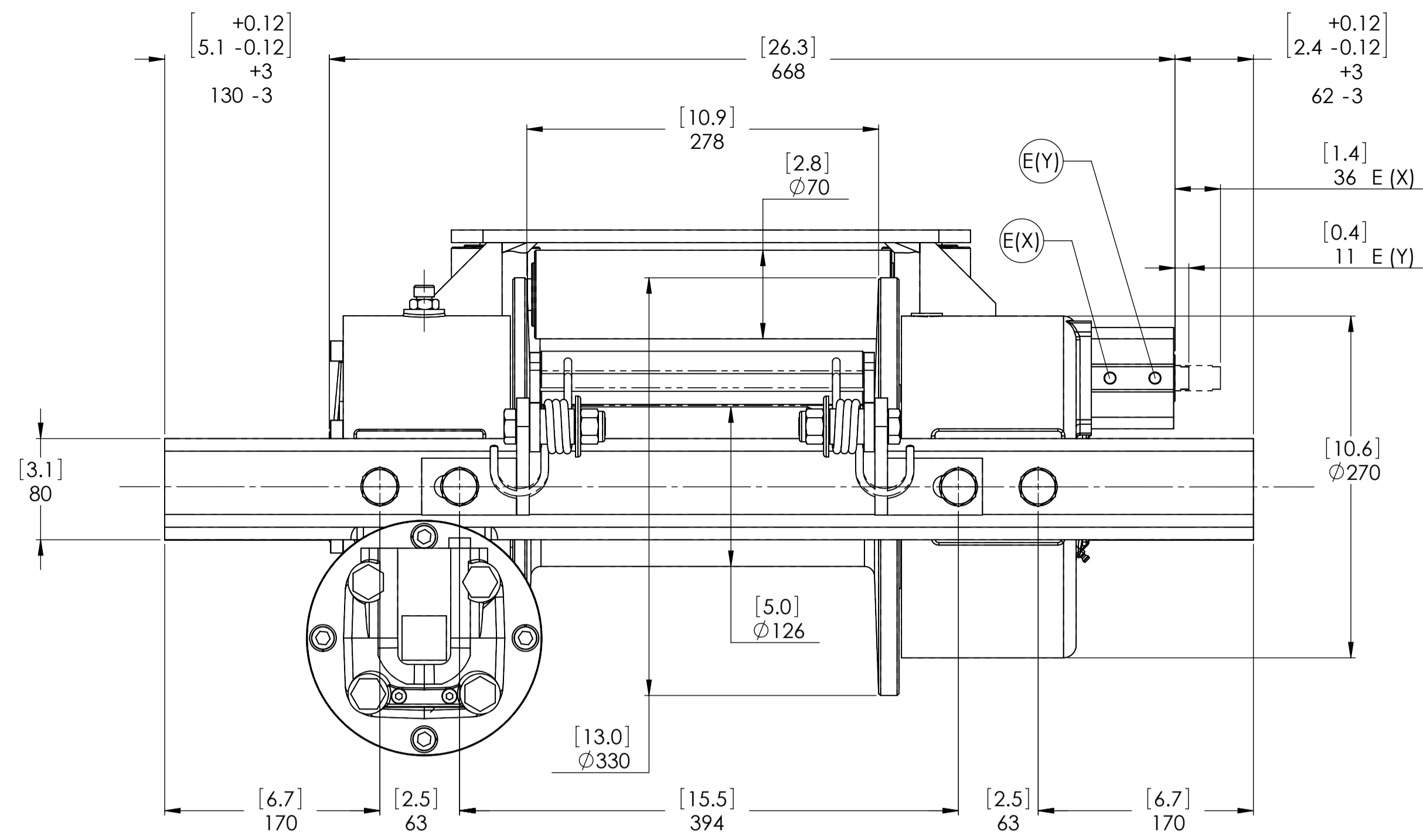


WINCH MODEL	MHS	WINCH GROUP	WORM GEAR	PLUGS
Pulling capacity	8000 Kgs.	Date	Modification	1.Fill 3/8"G
Max.Oil flow	100 Lt./min.			2.Level 3/8"G
Speed Line - first layer	5,0 Mt./Min.			3.Drain 3/8"G
Speed Line - top layer	8,9 Mt./Min.	DANGEROUS: Do not use winch to lift support or transport personnel.		SCALE 1:3.5
VIME INDUSTRIAL		Gear ratio	35:1	WEIGHTS
Funo - Bologna (Italy) www.vimeindustrial.com		Orbital hydr. motor	250 cc	Winch 125 Kgs.
The Quality is Transparent		Working pressure	160 Bar	Heavy-duty Roller fairlead 28,9 Kgs.
		Drum size	278 mm	Rope tensioner 4 Kgs.
		Drum clutch	Manual	COD. MHS80D250GP
		VIME Industrial reserves the right to improve its products through changes in designed or materials as it may seem desirable without notice.		DATE 23/07/2010

CONNECTIONS	
A	3/4"G
B	3/4"G
C	1/4"G
E (X) DISENGAGED	-----
E (Y) ENGAGED	-----



Machinery Directive 2006/42/CE
EN 14492-1



CONNECTIONS	
A	3/4"G
B	3/4"G
C	1/4"G
E (X) DISENGAGED	1/8"G
E (Y) ENGAGED	1/8"G

WINCH MODEL	MHS	WINCH GROUP	WORM GEAR	PLUGS
Pulling capacity	8000 Kgs.	Date	Modification	1.Fill 3/8"G
Max.Oil flow	100 Lt./min.			2.Level 3/8"G
Speed Line - first layer	5,0 Mt./Min.			3.Drain 3/8"G
Speed Line - top layer	8,9 Mt./Min.	DANGEROUS: Do not use winch to lift support or transport personnel.		
				SCALE 1:3.5
				WEIGHTS
				Winch 125 Kgs.
				Heavy-duty Roller fairlead 28,9 Kgs.
				Rope tensioner 4 Kgs.
				COD. MHS80D250AGP
				DATE 23/07/2010



Funo - Bologna (Italy)
www.vimeindustrial.com

The Quality is Transparent

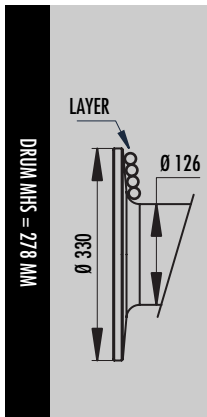
Gear ratio 35:1
Orbital hydr. motor 250 cc
Working pressure 160 Bar
Drum size 278 mm
Drum clutch Pneumatic
VIME Industrial reserves the right to improve its products through changes in designed or materials as it may seem desirable without notice.

DATE 23/07/2010

1.3.4 MHS 8000 WINCH TECHNICAL DATA

RATIO	WIRE ROPE SIZE [MM]	LAYER	LINE PULL
			[KGS.]
35:1	14*	1	8.000
		2	6.665
		3	5.710
		4	5.000
		5	4.440

OIL SUPPLY [LT/MIN]	DRUM REVOLUTION [RPM]	LINE SPEED [MT/MIN]				
		1	2	3	4	5
60	6,7	3,0	3,5	4,1	4,7	5,3
80	9,0	4,0	4,8	5,5	6,3	7,1
100	11,3	5,0	6,0	7,0	7,9	8,9



LAYER	DRUM DIAMETER		WIRE ROPE ON LAYER [MT]		WIRE ROPE QUANTITY [MT]	
	Ø MM	-	14 MM	00 MM	14 MM	00 MM
			Ø MM	-	-	-
5	252	-	14,9	-	58,1	-
4	224	-	13,3	-	43,1	-
3	196	-	11,6	-	29,9	-
2	168	-	10,0	-	18,2	-
1	140	-	8,3	-	8,3	-
0	126	-	-	-	-	-

WIRE ROPE CAPACITY [MT]		MAX. WIRE ROPE CAPACITY EN 14492-1 [MT]		MAX. WIRE ROPE CAPACITY [MT]	
14 MM	00 MM	14 MM	00 MM	14 MM	00 MM
55	00	70**	00	90	00

DESCRIPTION	WEIGHT
	[KGS.]
WINCH (WITHOUT CABLE)	125
ACCESSORY : ROLLER/FAILREAD	28
ACCESSORY : CABLE TENSIONER	5

NOTA

Specifications are subject to change without notification and without incurring obligation. Specifications in this publication are theoretical and may vary depending on hydraulic system, environment, etc.

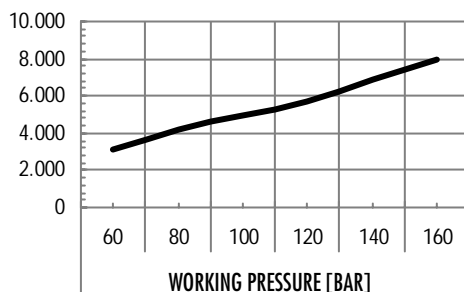
NOTA

*Wire rope size must be respected. Recommended wire rope min. tensile strength 2160 N/mm².
Wire rope minimum breaking load must be at least double of winch max. pulling capacity.

** Max. wire rope capacity according with EN 14492-1.

1.3.5 MHS 8000 WINCH PERFORMANCE CHARTS AT THE 1ST LAYER

LINE PULL-FIRST LAYER [KGS]



LINE SPEED [MT/MIN]

