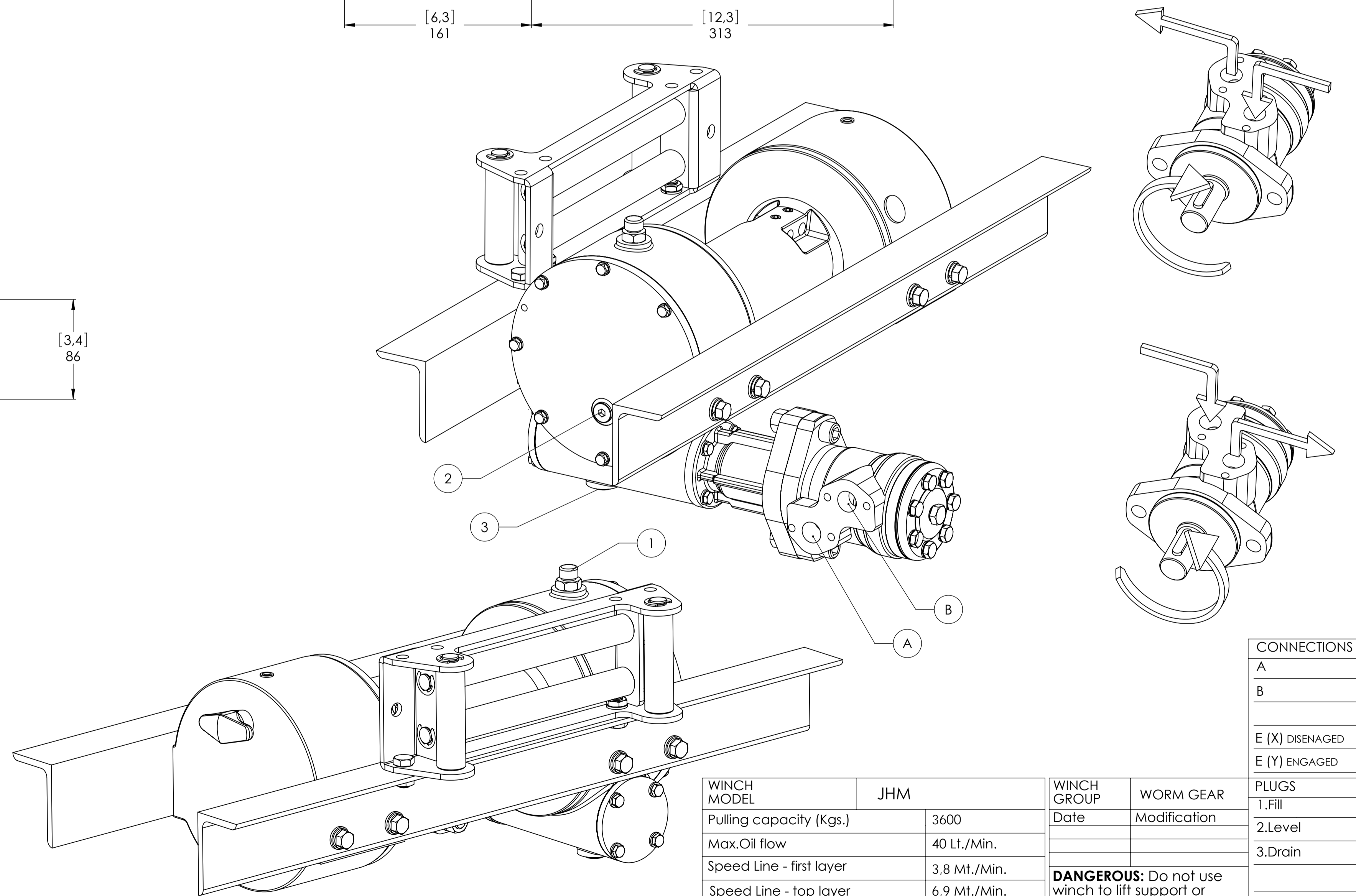
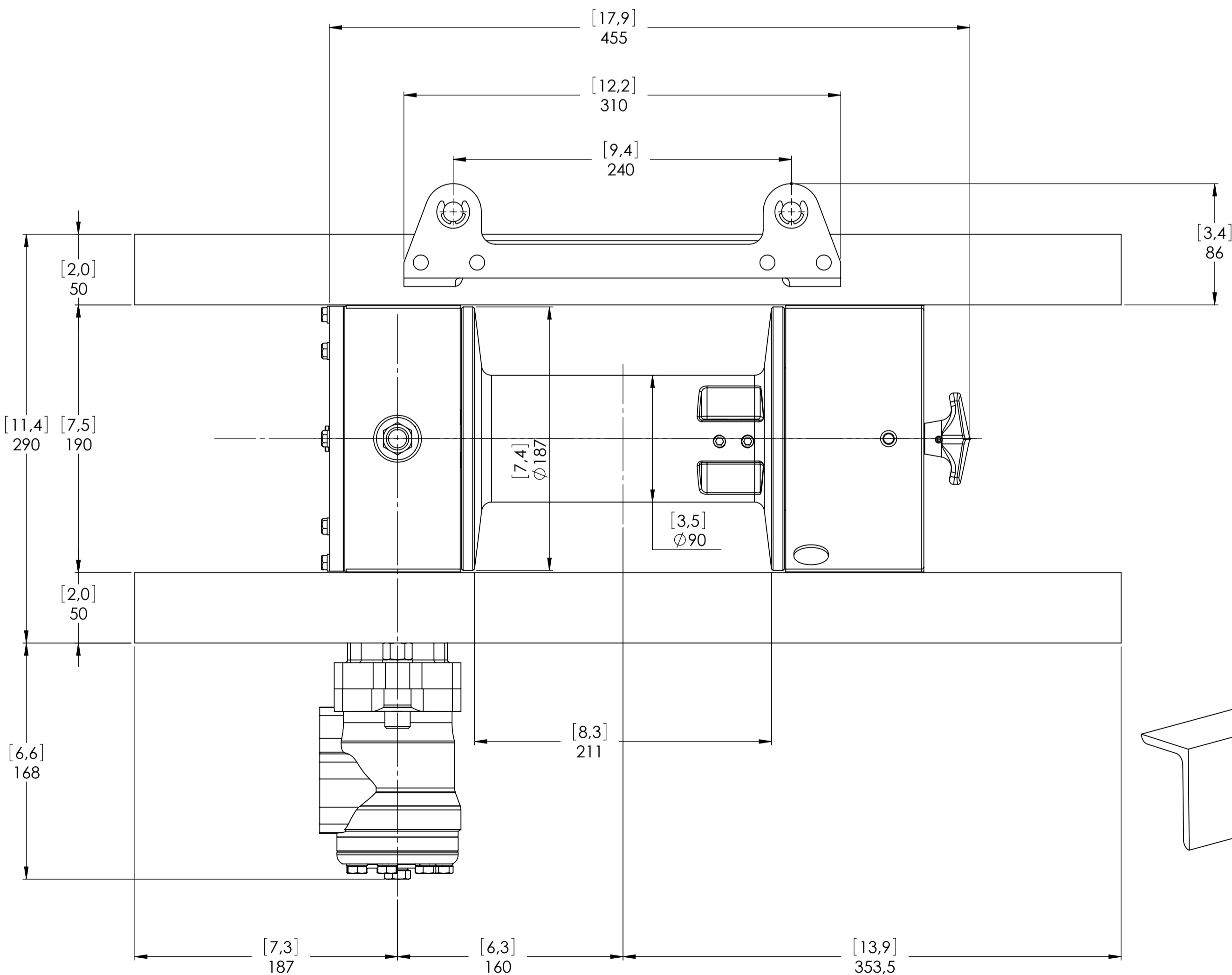
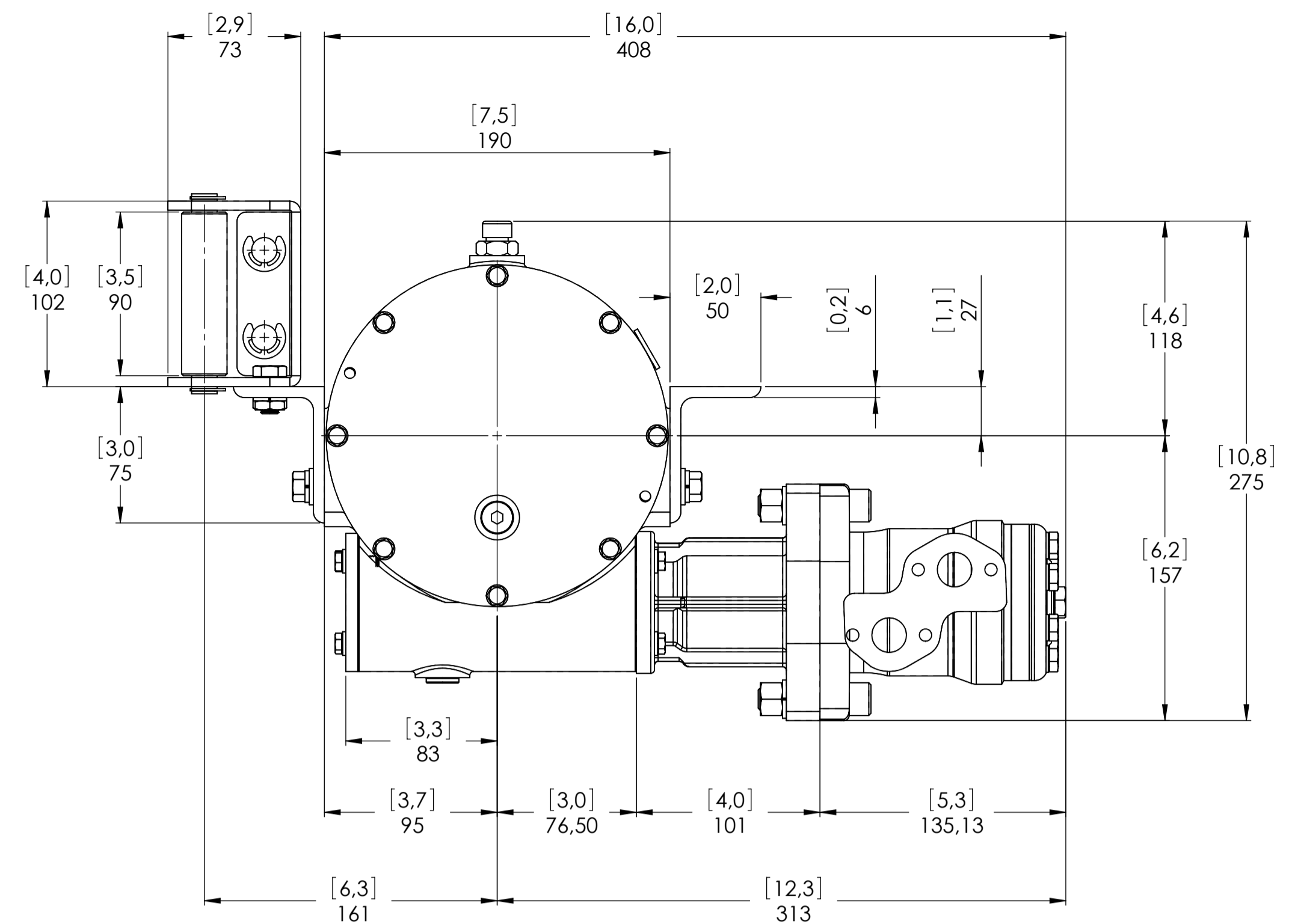
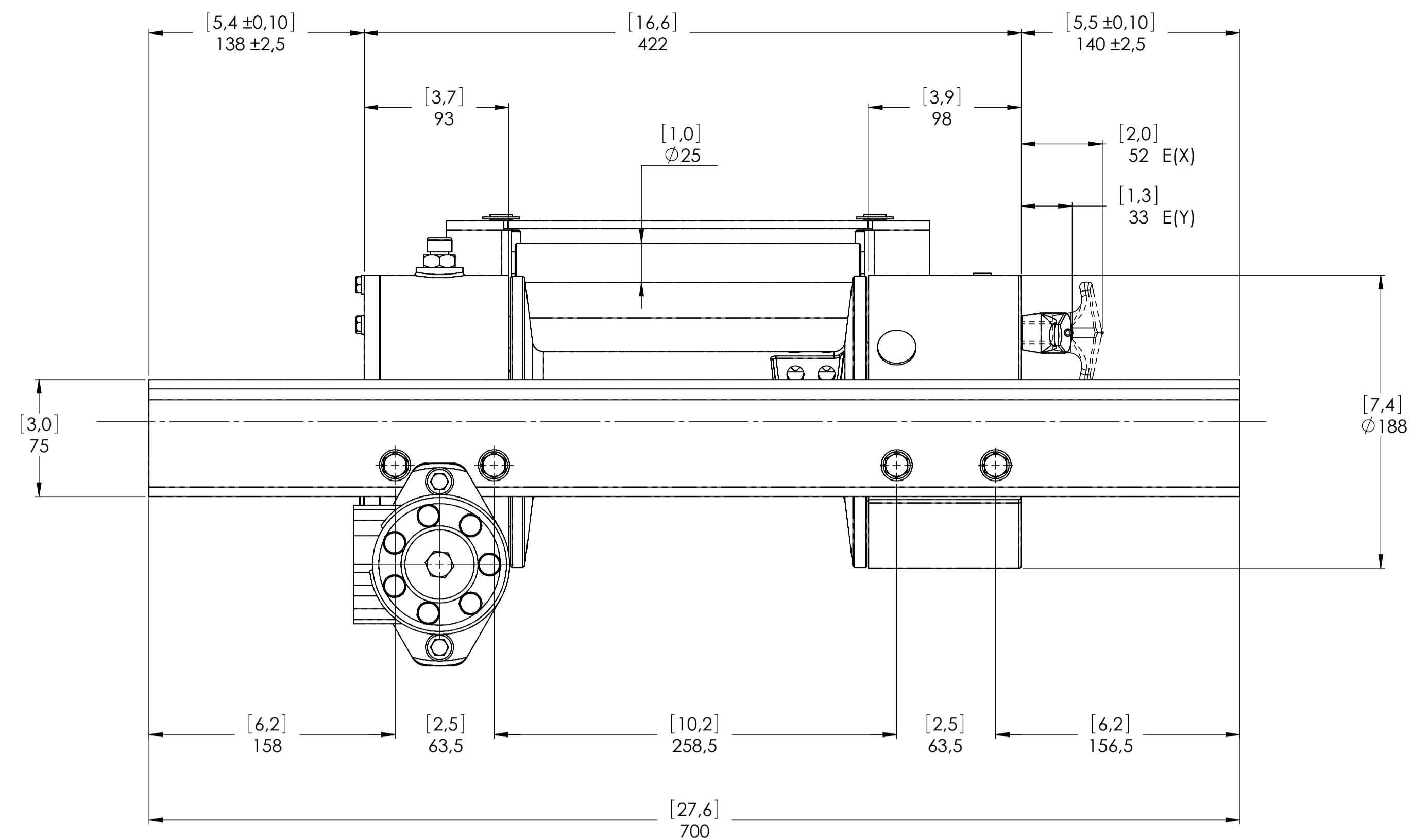


Machinery Directive 2006/42/CE
EN 14492-1



CONNECTIONS	
A	1/2" G
B	1/2" G
E (X) DISENGAGED	-----
E (Y) ENGAGED	-----

WINCH MODEL	JHM	WINCH GROUP	WORM GEAR
Pulling capacity (Kgs.)	3600	Date	Modification
Max.Oil flow	40 Lt./Min.	DANGEROUS: Do not use winch to lift support or transport personnel.	
Speed Line - first layer	3,8 Mt./Min.		
Speed Line - top layer	6,9 Mt./Min.		

Gear ratio	60:1
Orbital hydr. motor	50 cc
Working pressure	130 Bar
Drum size	211 mm
Drum clutch	Manual

PLUGS	
1.Fill	3/8" G
2.Level	3/8" G
3.Drain	3/8" G
SCALE 1:2,5	
WEIGHTS	
Winch (without oil)	35 Kgs.
Roller fairlead	3,5 Kgs.
Heavy-duty roller fairlead	-----
Rope tensioner	-----



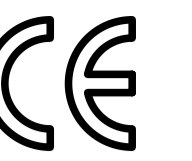
Funo - Bologna (Italy)
www.vimeindustrial.com

The Quality is Transparent

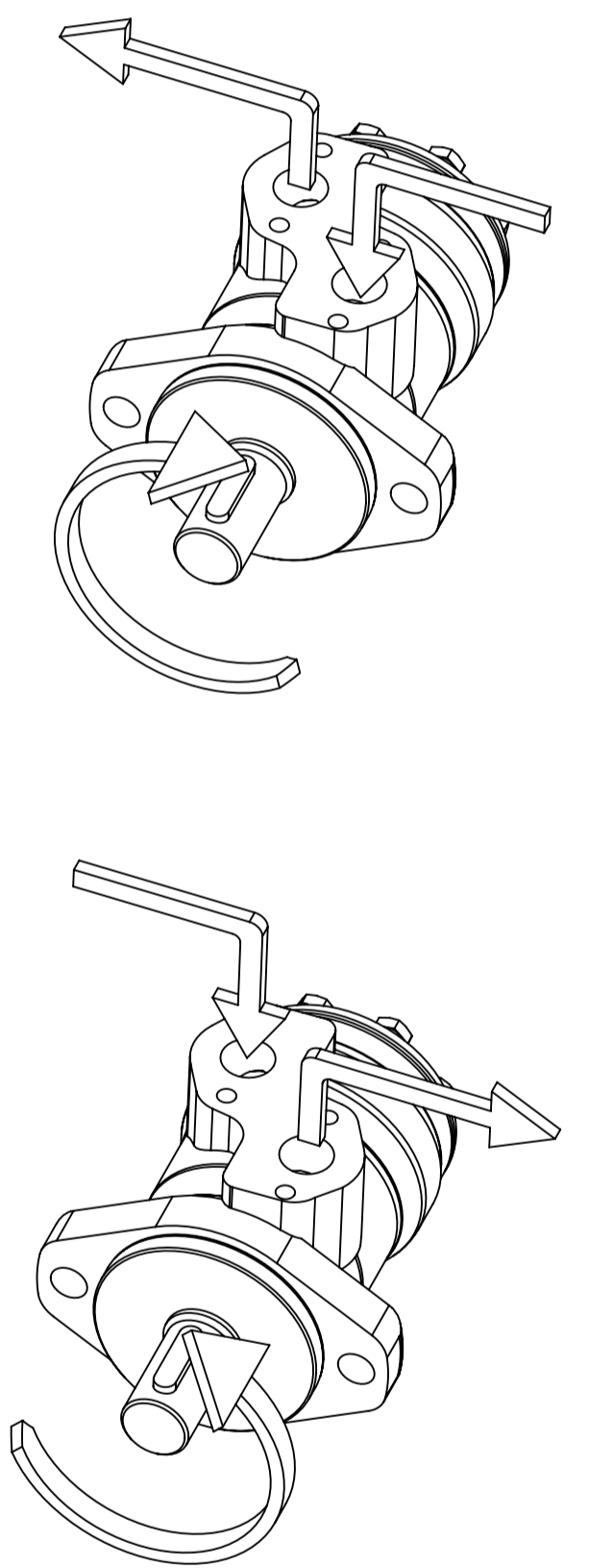
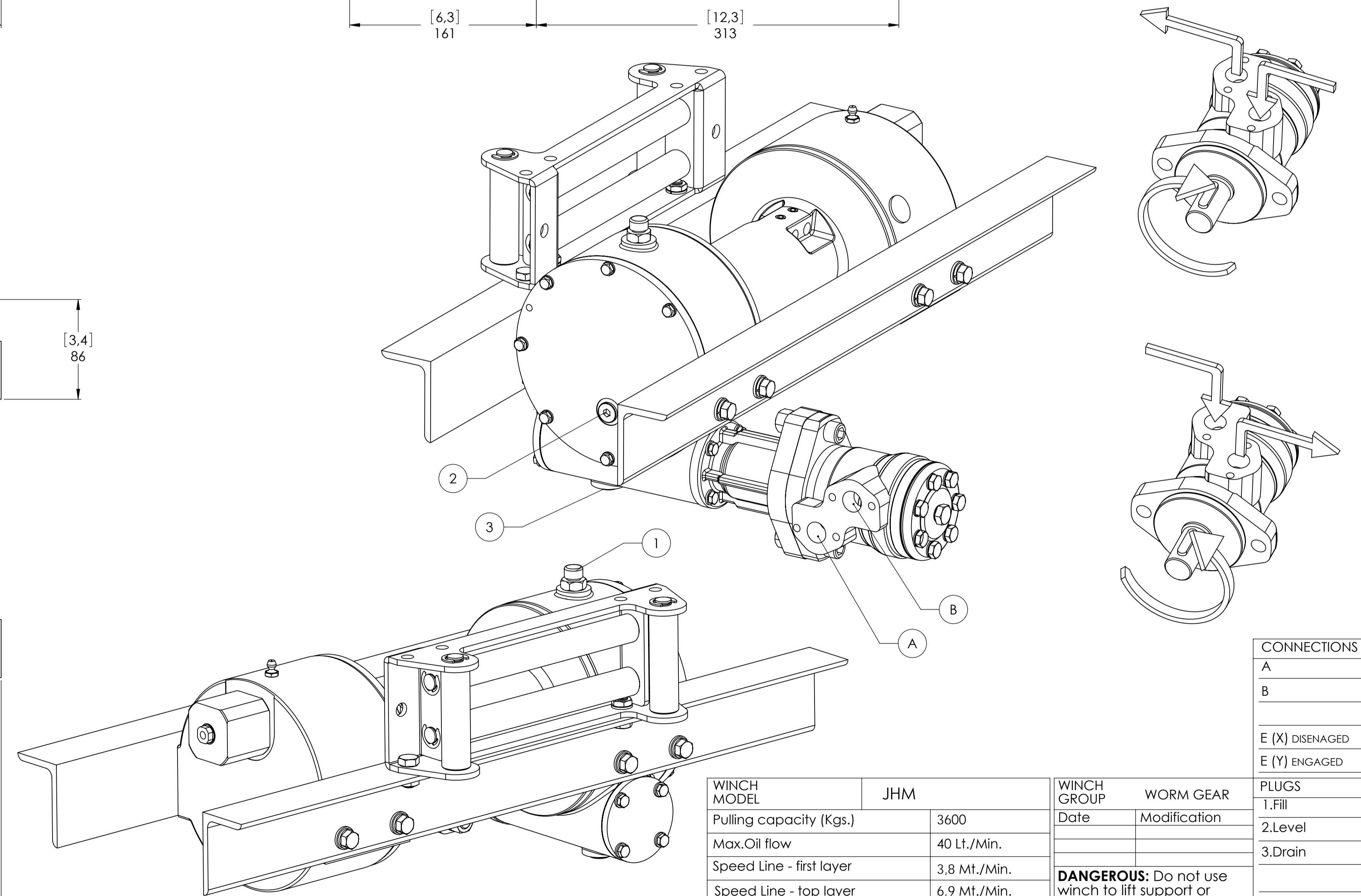
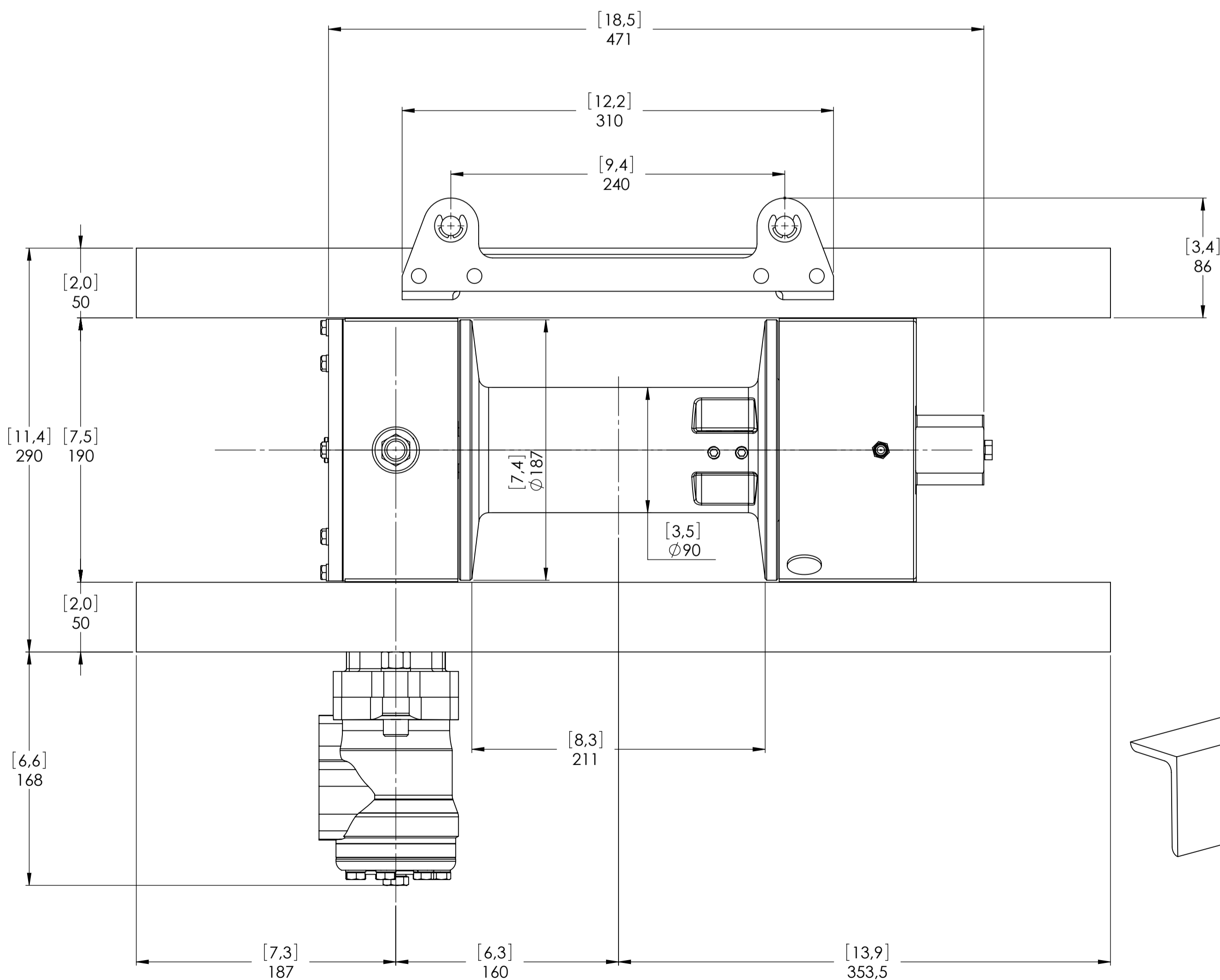
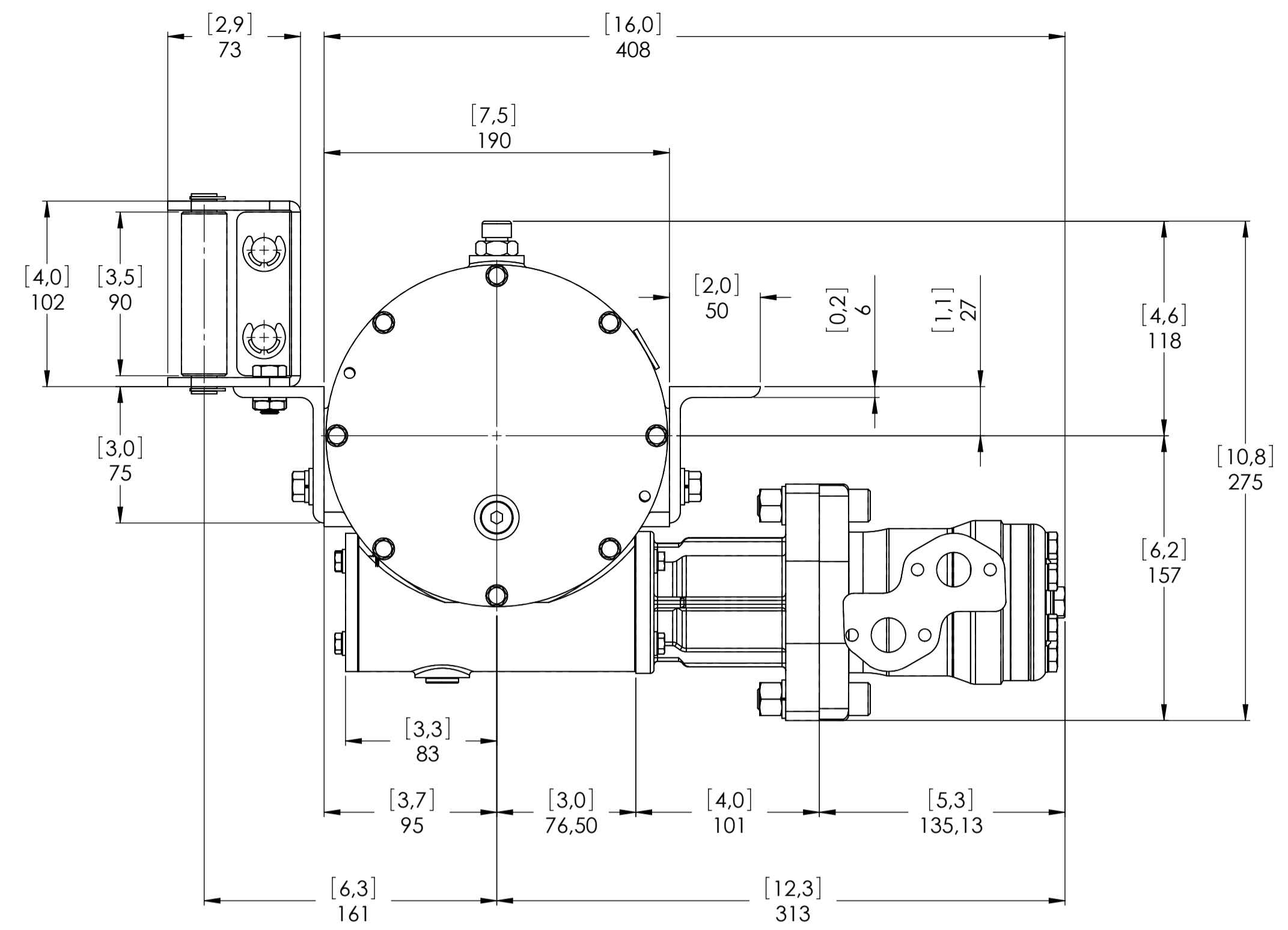
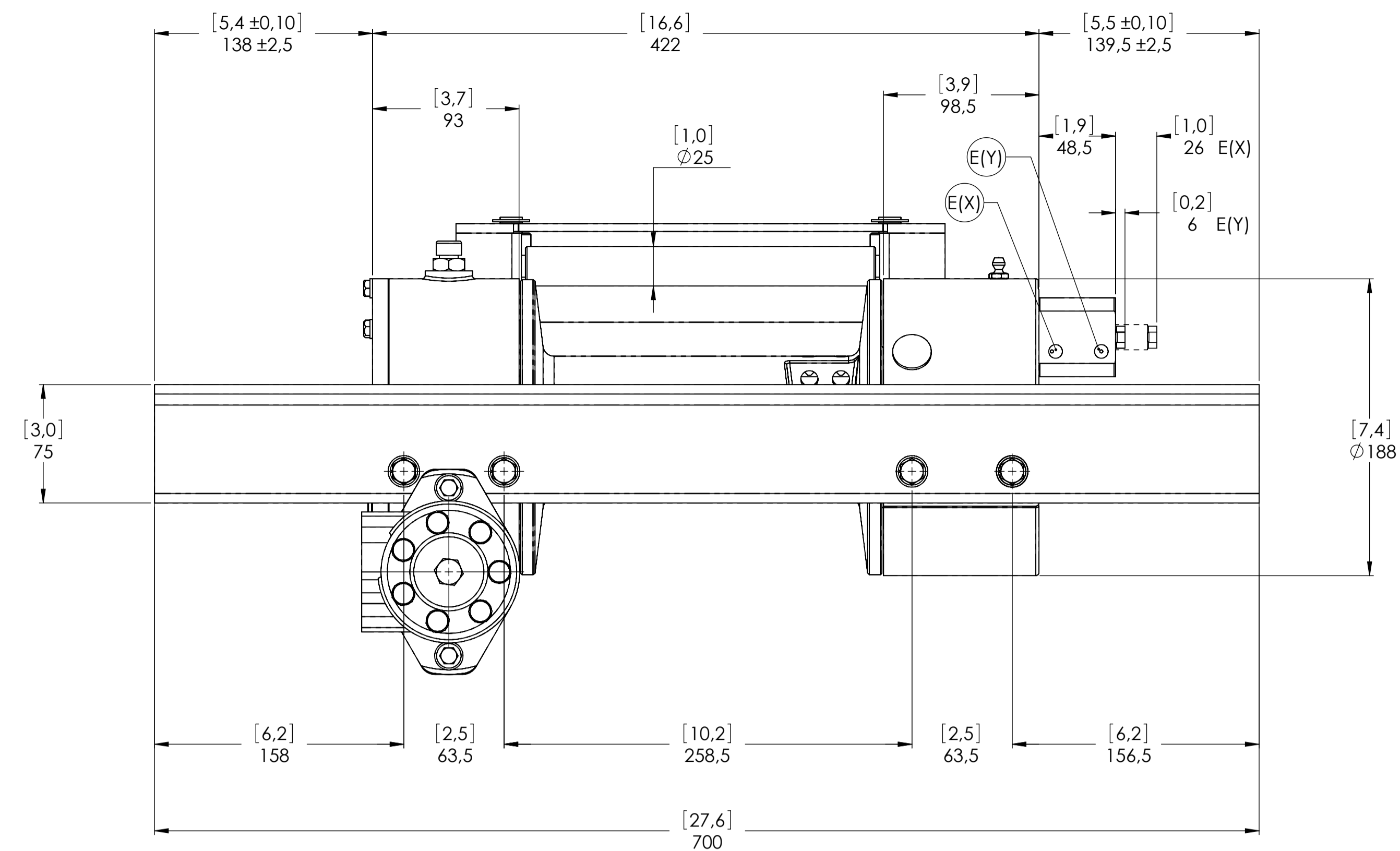
VIME Industrial reserves the right to improve its products through changes in design or materials as it may seem desirable without notice.

DATA
09/11/2010

CODE JHM36D50G



Machinery Directive 2006/42/CE
EN 14492-1



WINCH MODEL		JHM	WINCH GROUP	WORM GEAR	PLUGS
Pulling capacity (Kgs.)		3600	Date	Modification	1.Fill 3/8"G
Max.Oil flow		40 Lt./Min.			2.Level 3/8"G
Speed Line - first layer		3,8 Mt./Min.			3.Drain 3/8"G
Speed Line - top layer		6,9 Mt./Min.			
					SCALE 1:2,5
					WEIGHTS
					Winch (without oil) 35 Kgs.
					Roller fairlead 3,5 Kgs.
					Heavy-duty roller fairlead -----
					Rope tensioner -----
					CODE JHM36D50AG
					DATE 9/11/2010



Funo - Bologna (Italy)
www.vimeindustrial.com

The Quality is Transparent

VIME Industrial reserves the right to improve its products through changes in designed or materials as it may seem desiderable without notice

DATE 9/11/2010

CONNECTIONS	
A	1/2"G
B	1/2"G
E (X) DISENAGED	1/8"G
E (Y) ENGAGED	1/8"G

PLUGS	
1.Fill	3/8"G
2.Level	3/8"G
3.Drain	3/8"G

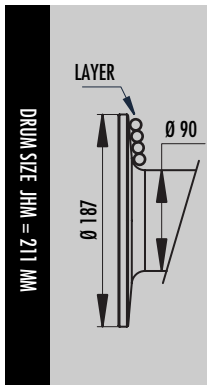
WEIGHTS	
Winch (without oil)	35 Kgs.
Roller fairlead	3,5 Kgs.
Heavy-duty roller fairlead	-----
Rope tensioner	-----

1.4.9 JHM 3600 WINCH TECHNICAL DATA

RATIO	WIRE ROPE SIZE [MM]	LAYER	LINE PULL [KGS]
60:1	10*	1	3.600
		2	3.000
		3	2.570
		4	2.250
		5	2.000

OIL SUPPLY [LT/MIN]	DRUM REVOLUTION [RPM]	LINE SPEED [MT/MIN]				
		1	2	3	4	5
20	5,1	1,6	1,9	2,2	2,6	2,9
30	9,2	2,9	3,5	4,0	4,6	5,2
40	12,2	3,8	4,6	5,4	6,1	6,9


WIRE ROPE MIN. BREAKING LOAD EN 14492-1 [KGS]	7.200
---	-------




LAYER	DRUM DIAMETER [MM]		WIRE ROPE ON LAYER [MT]		WIRE ROPE QUANTITY [MT]	
	00 MM	10 MM	00 MM	10 MM	00 MM	10 MM
	5	-	180	-	11,4	-
4	-	160	-	10,1	-	32,8
3	-	140	-	8,8	-	22,7
2	-	120	-	7,6	-	13,9
1	-	100	-	6,3	-	6,3
0	-	90	-	-	-	-

WIRE ROPE CAPACITY [MT]		MAX. WIRE ROPE CAPACITY EN 14492-1 [MT]		MAX. WIRE ROPE CAPACITY [MT]	
00 MM	10 MM	00 MM	00 MM	00 MM	10 MM
-	30	-	32**	-	44

DESCRIPTION	WEIGHT
	[KGS]
WINCH (WITHOUT CABLE)	35
ACCESSORY : ROLLERFAILREAD	3,5
ACCESSORY : CABLE TENSIONER	-----

NOTES 

Specifications are subject to change without notification and without incurring obligation. Specifications in this publication are theoretical and may vary depending on hydraulic system, environment, etc.

NOTES 

*Wire rope size must be respected. Recommended wire rope min. tensile strength 2160 N/mm².
Wire rope minimum breaking load must be at least double of winch max. pulling capacity.

** Max. wire rope capacity according with EN 14492-1.

1.4.10 JHM 3600 WINCH PERFORMANCE CHARTS AT THE 1ST LAYER

