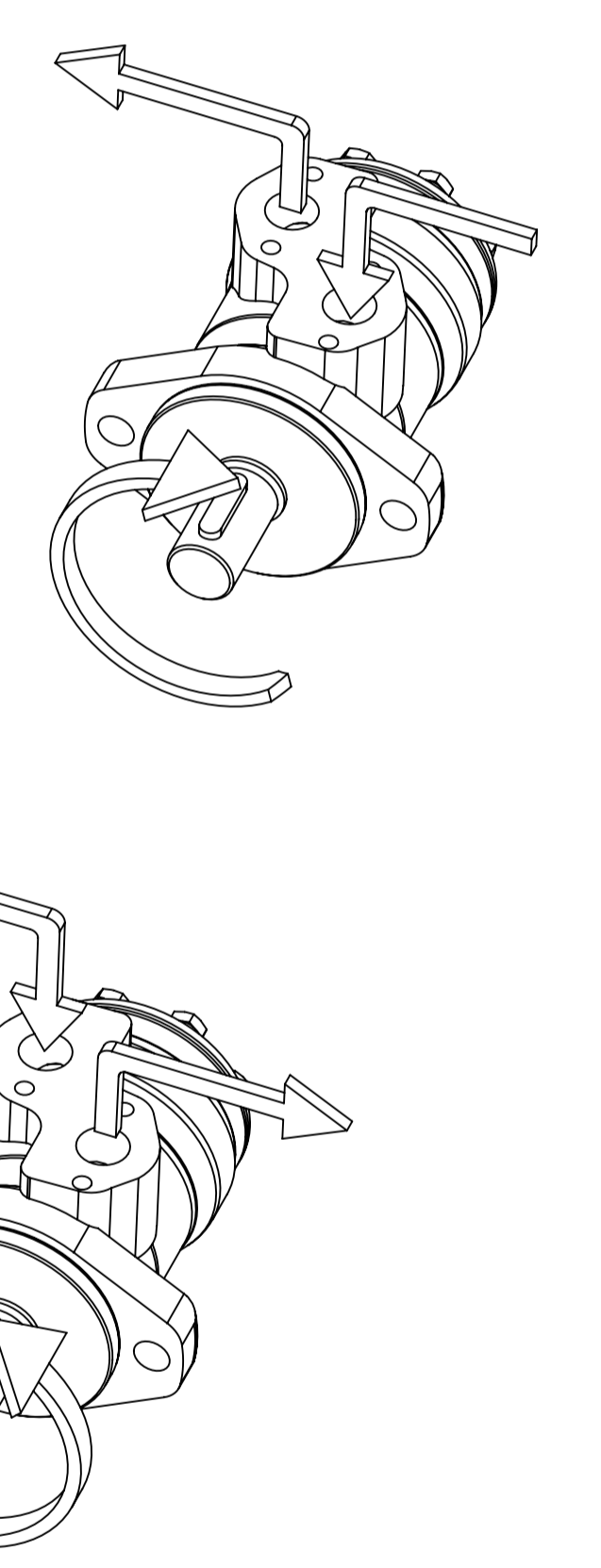
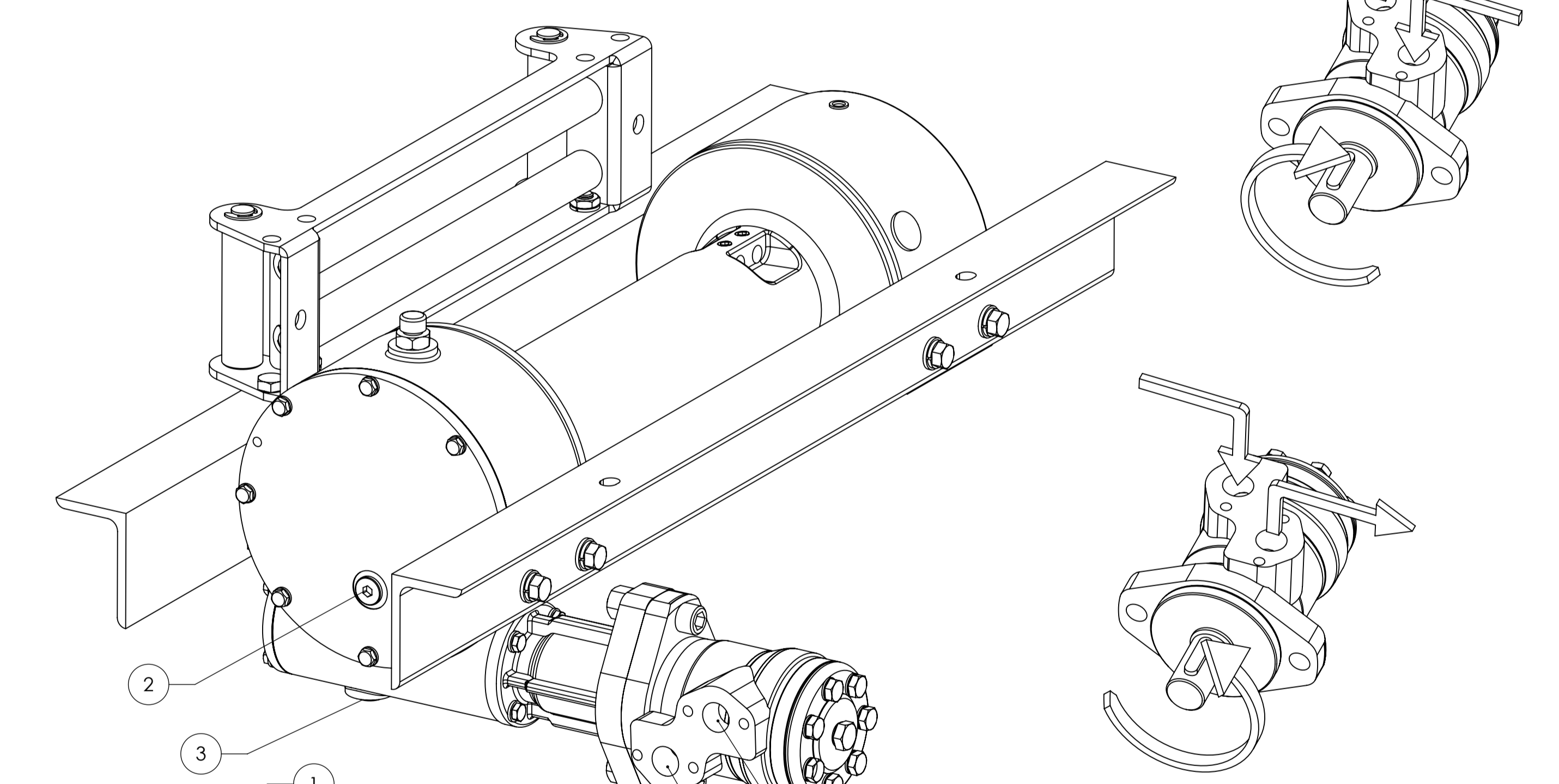
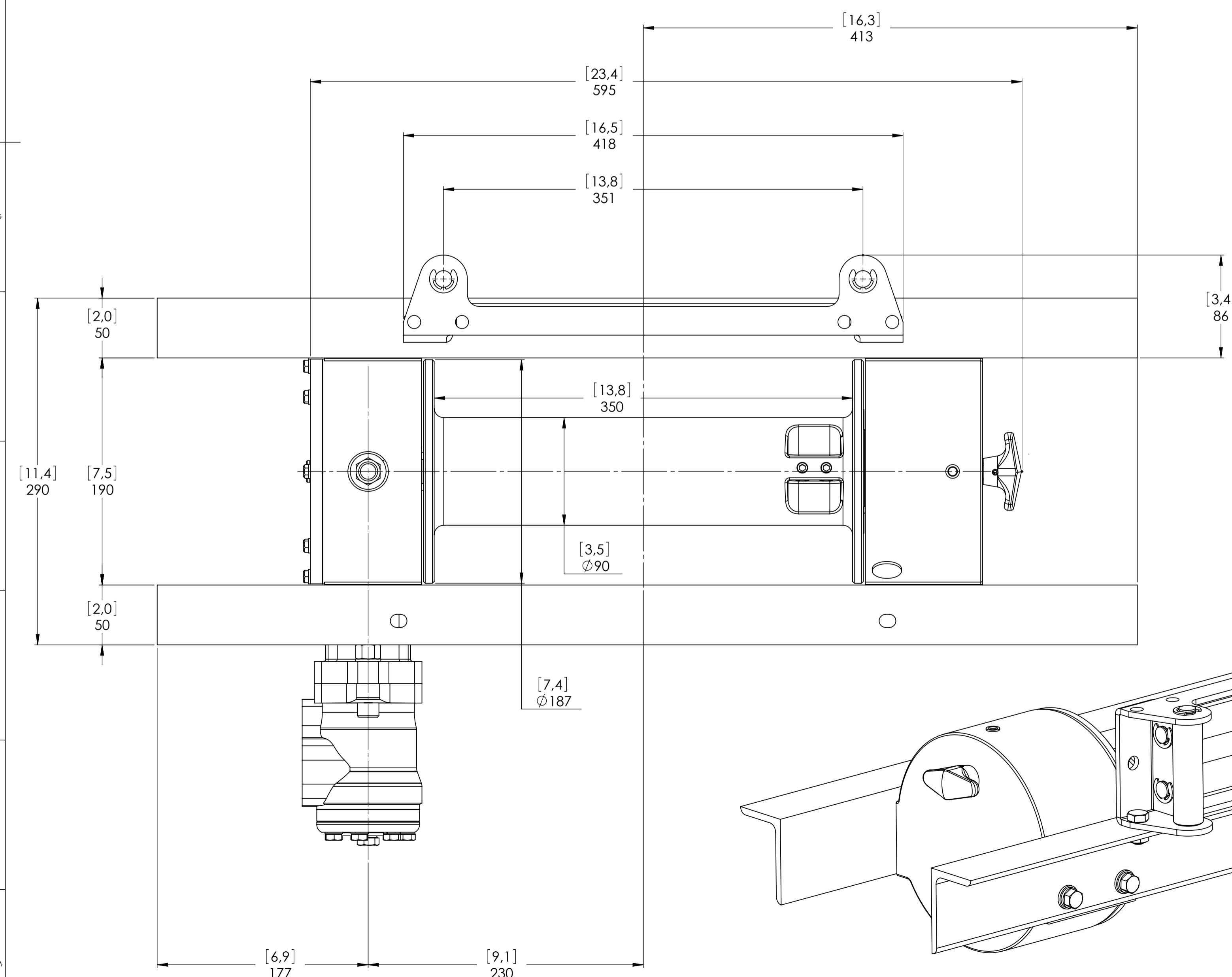
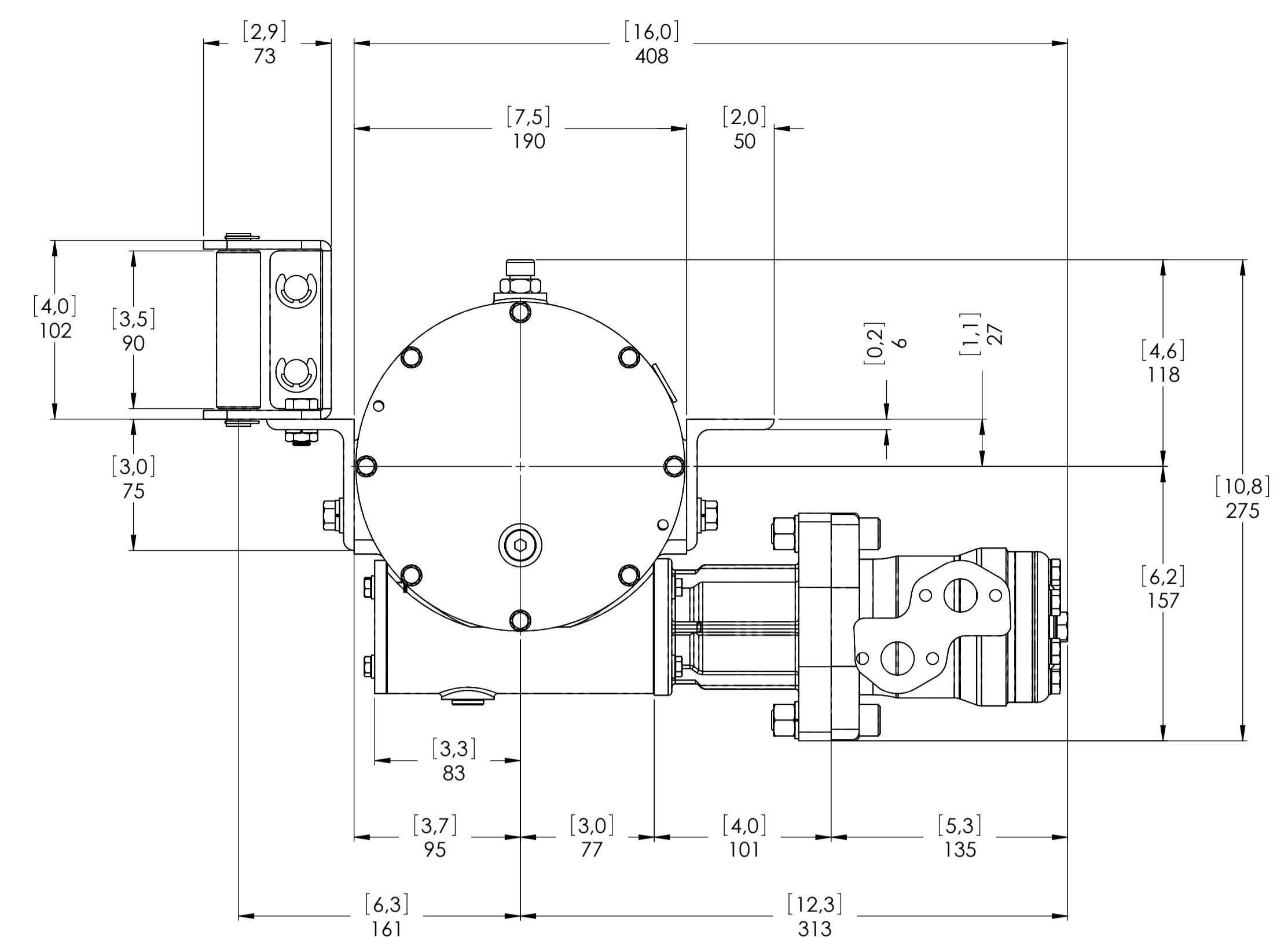
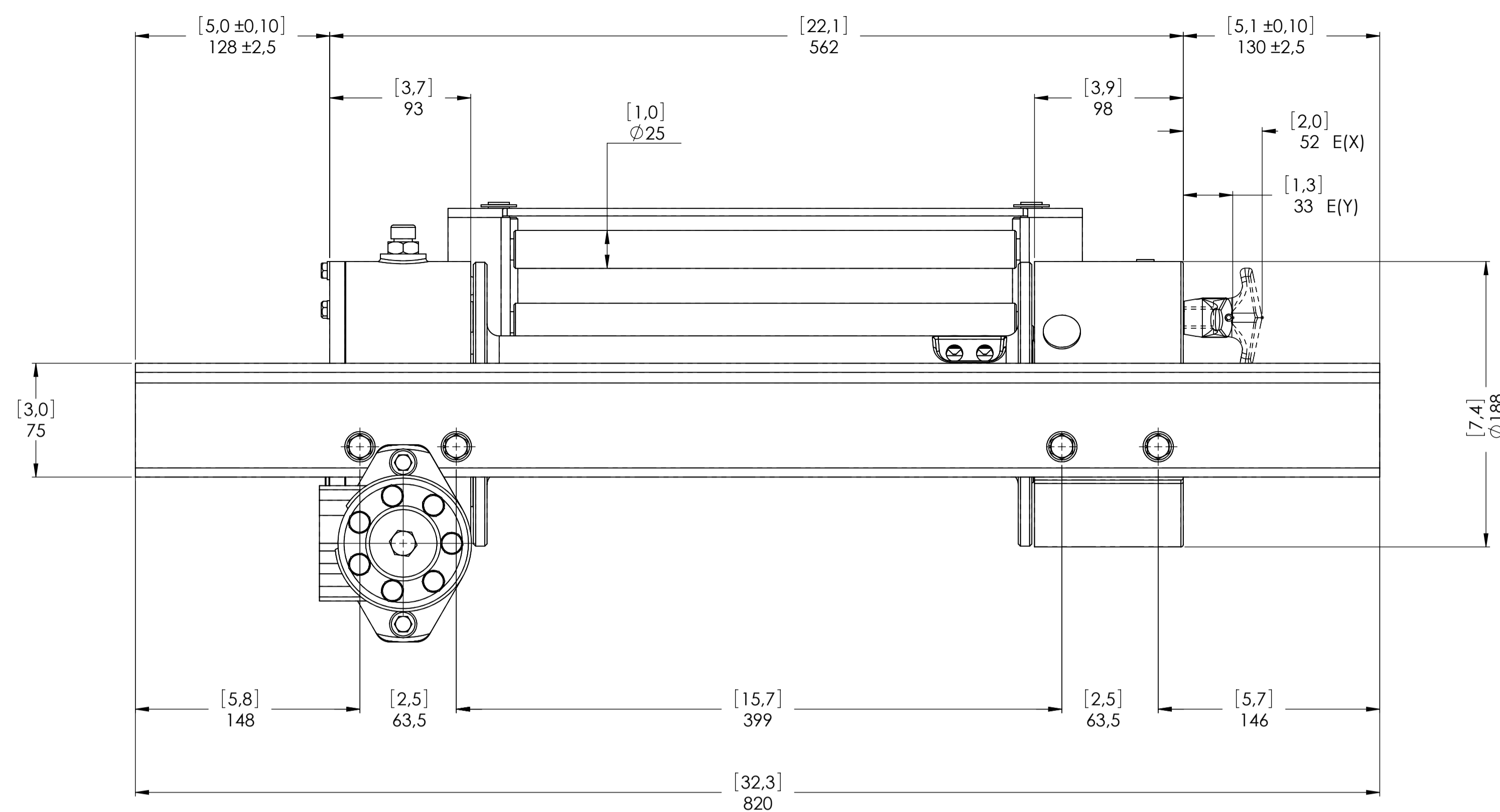


Machinery Directive 2006/42/CE  
EN 14492-1



WINCH MODEL		JHL	WINCH GROUP	WORM GEAR	PLUGS
Pulling capacity (Kgs.)		3600	Date	Modification	1.Fill 3/8"G
Max.Oil flow		40 Lt./Min.			2.Level 3/8"G
Speed Line - first layer		3,8 Mt./Min.			3.Drain 3/8"G
Speed Line - top layer		6,9 Mt./Min.			
					SCALE 1:2,5
					WEIGHTS
					Winch (without oil) 45 Kgs.
					Roller fairlead 4,7 Kgs.
					Heavy-duty roller fairlead -----
					Rope tensioner -----
					CODE JHL36D50G
					DATA 09/11/2010

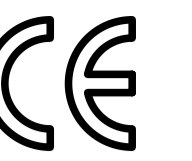


Funo - Bologna (Italy)  
www.vimeindustrial.com

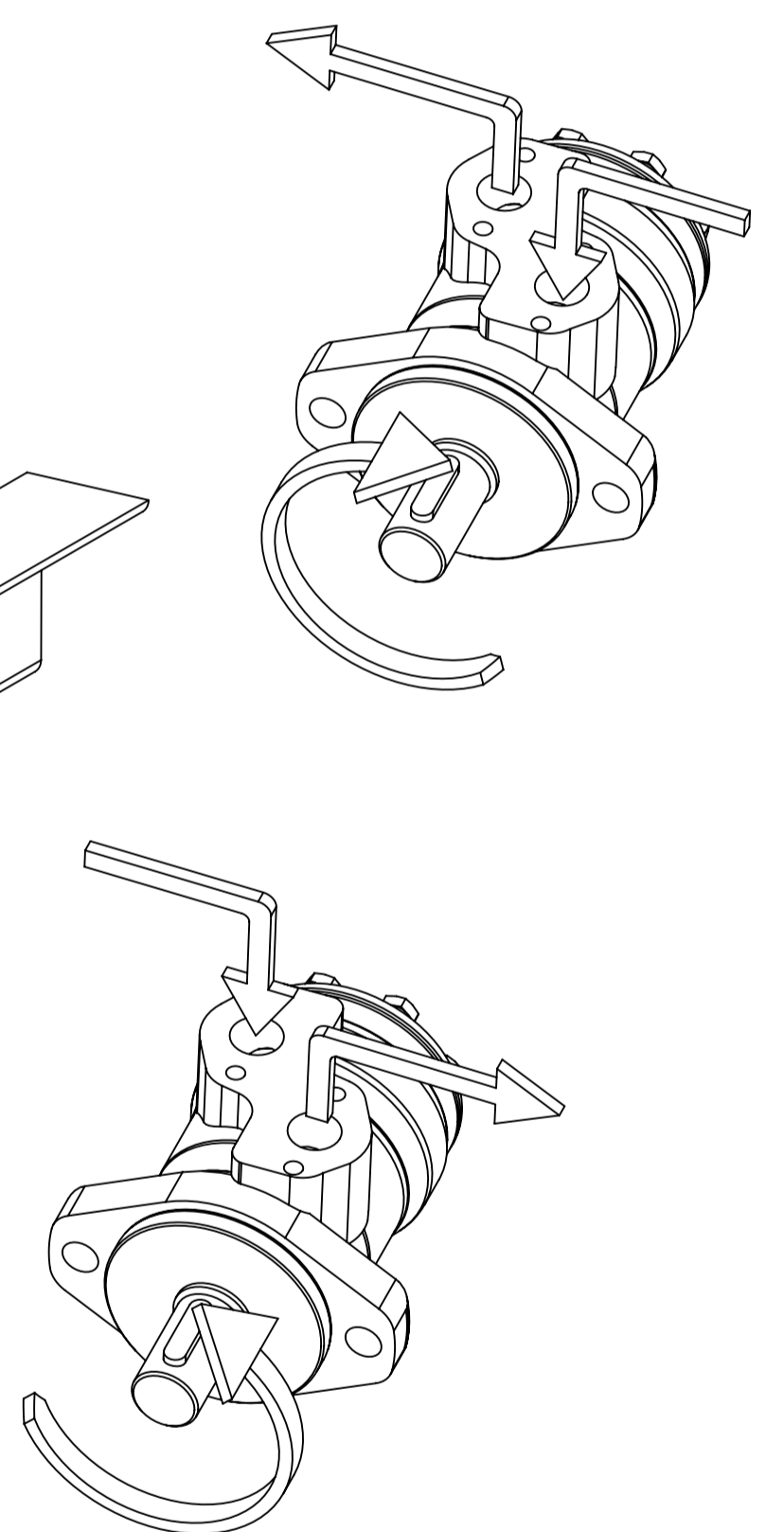
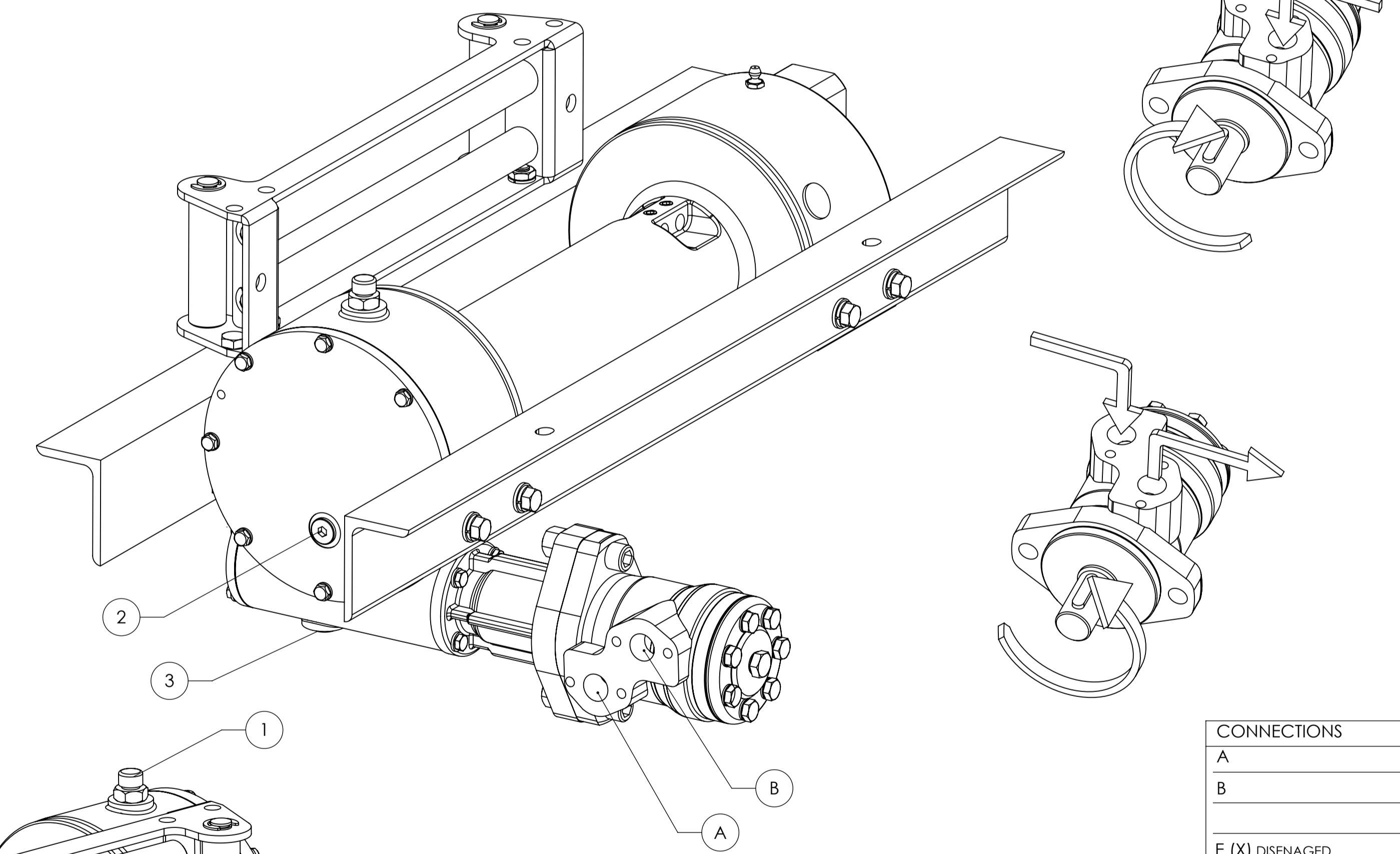
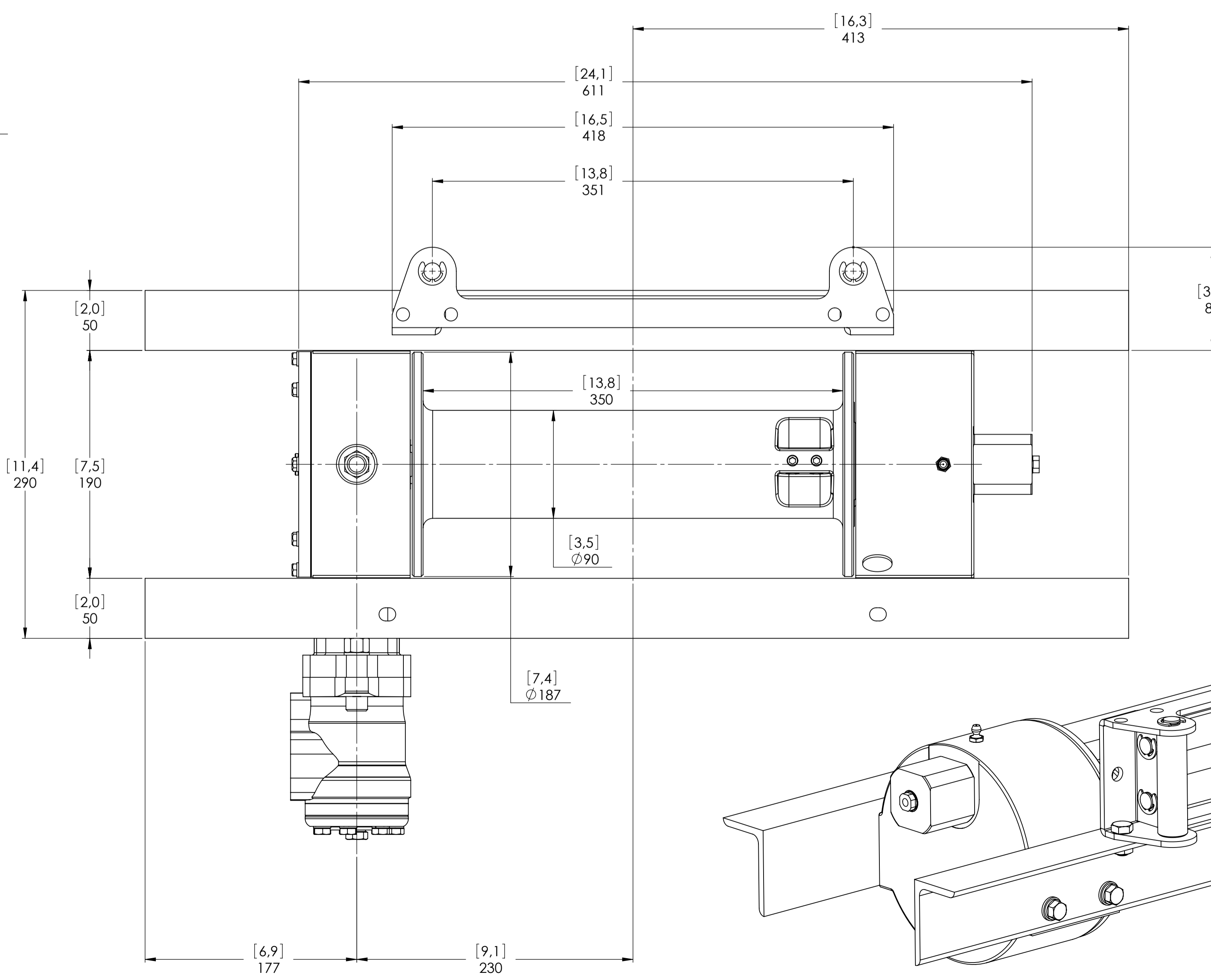
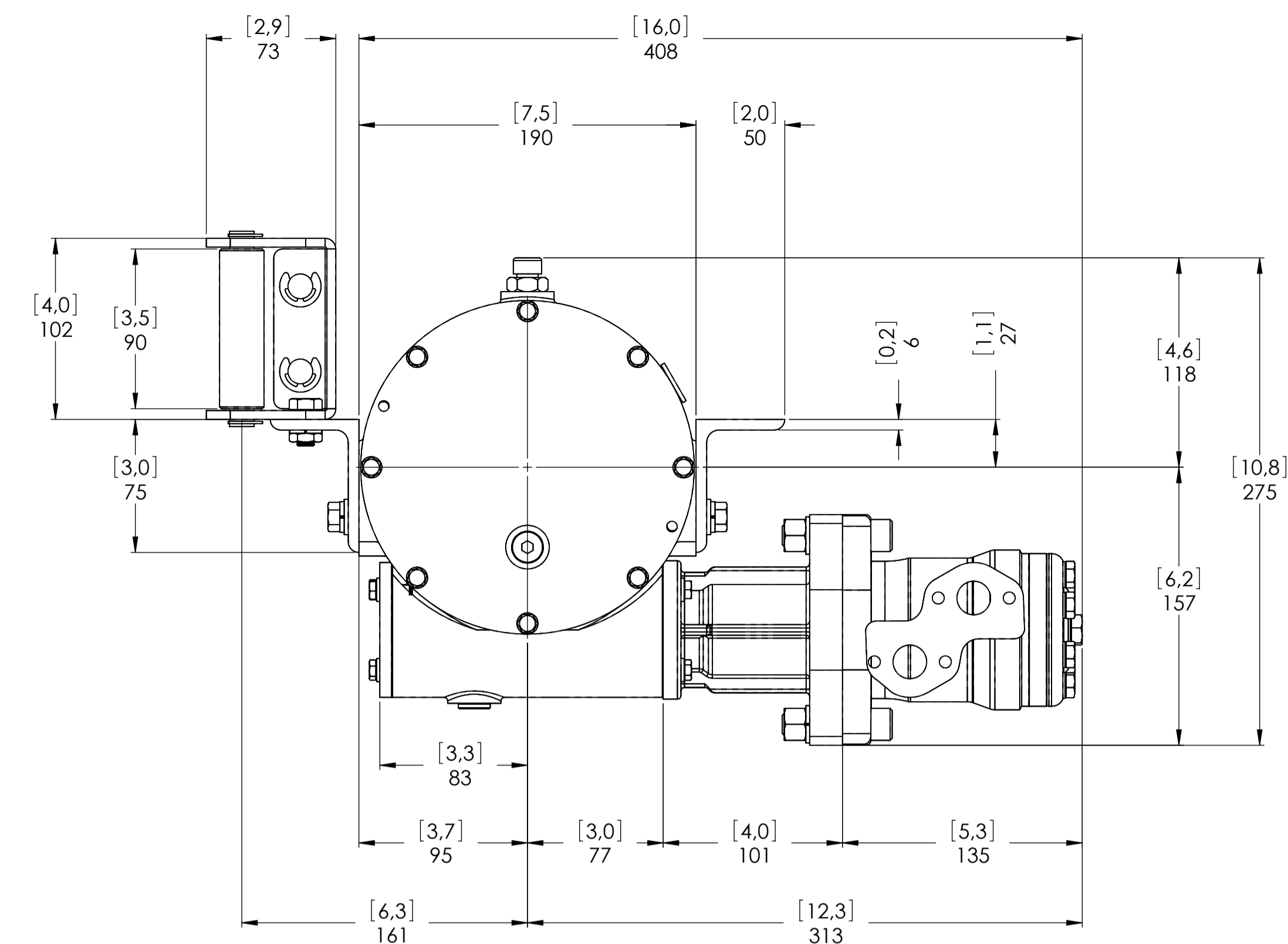
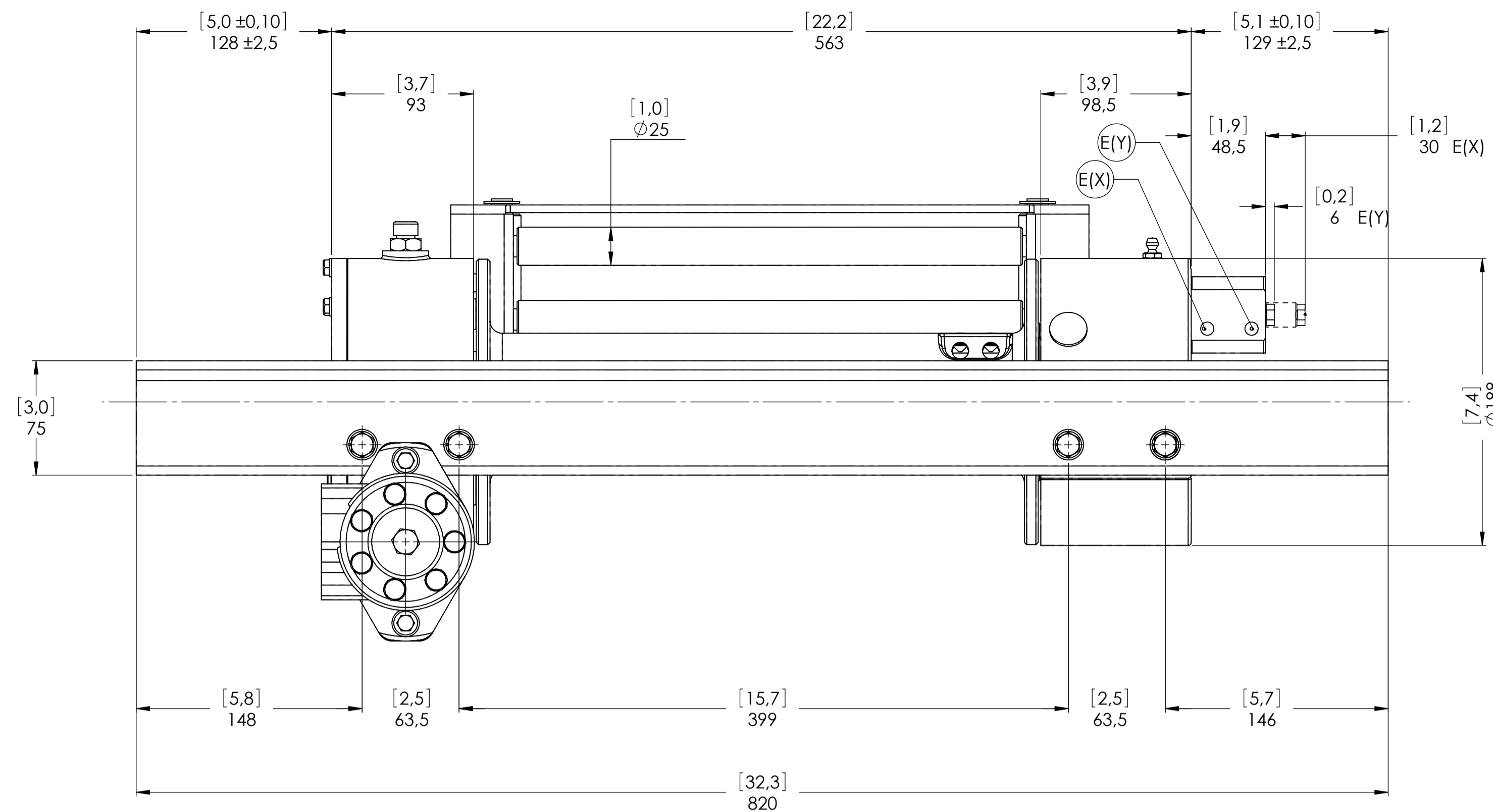
The Quality is Transparent  
VIME industrial reserves the right to improve its products through changes in designed or materials as it may seem desirable without notice


DATA 09/11/2010

CONNECTIONS	
A	1/2"G
B	1/2"G
E (X)	DISENAGED -----
E (Y)	ENGAGED -----

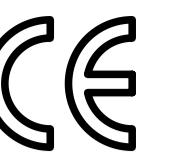


Machinery Directive 2006/42/CE  
EN 14492-1

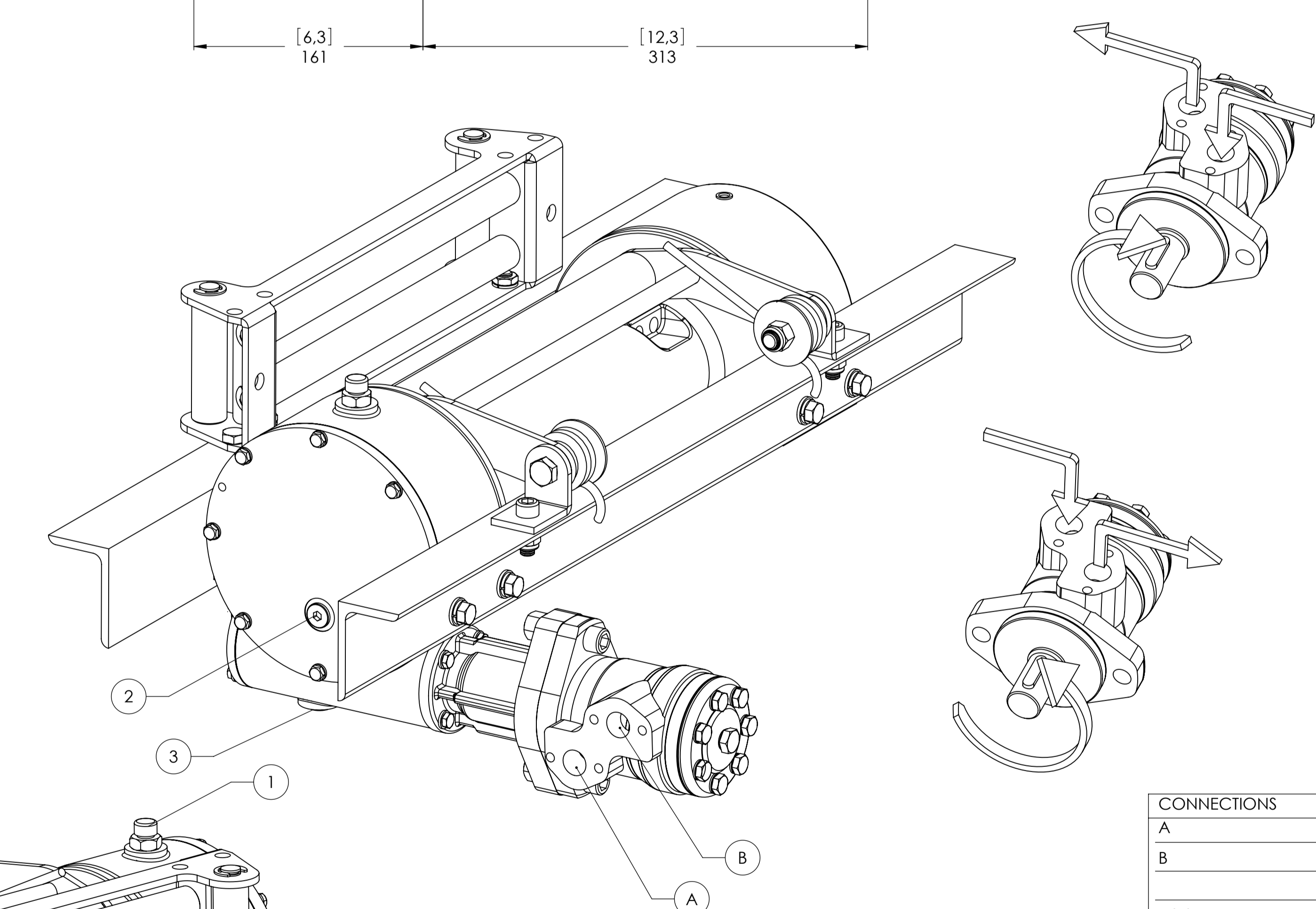
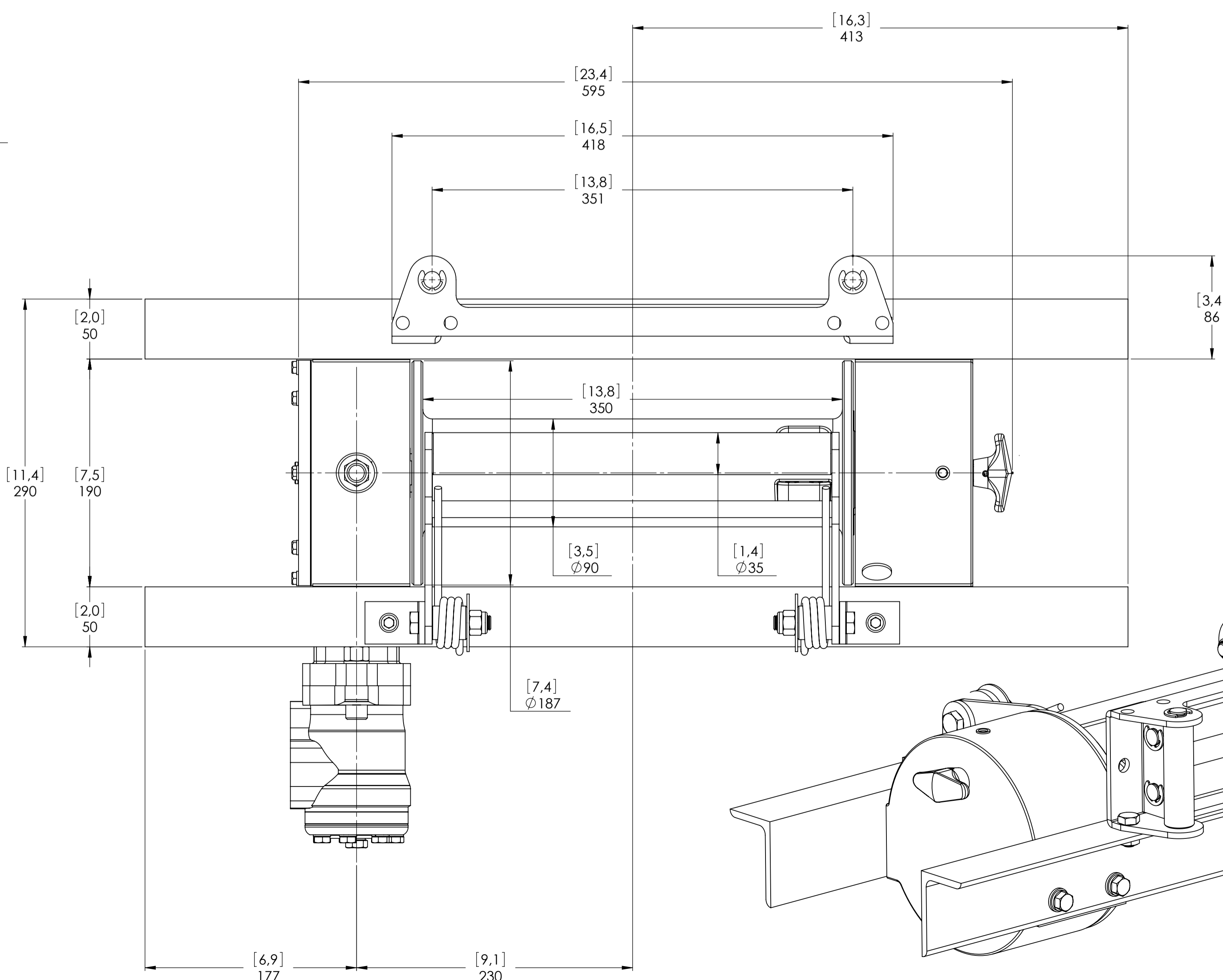
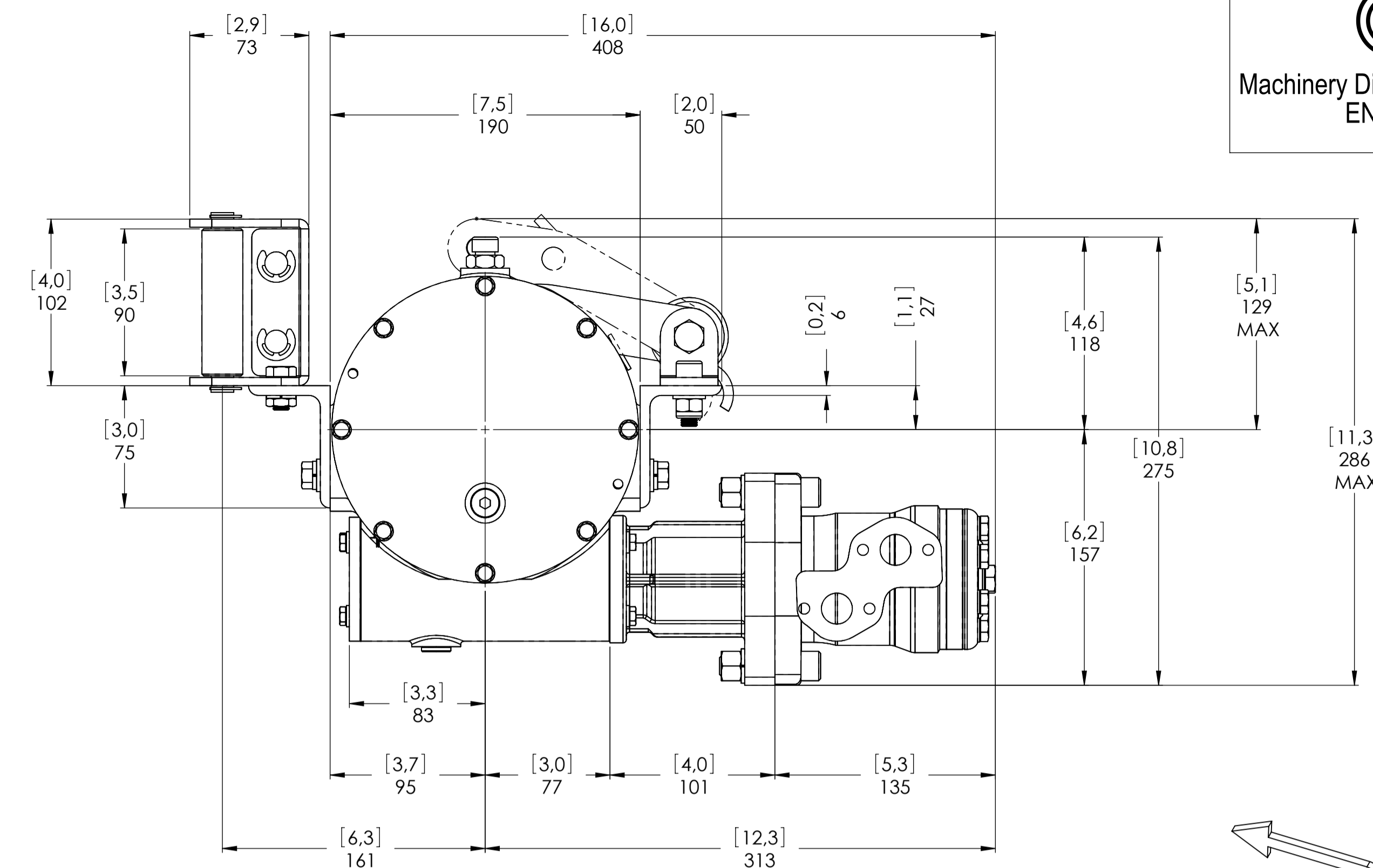
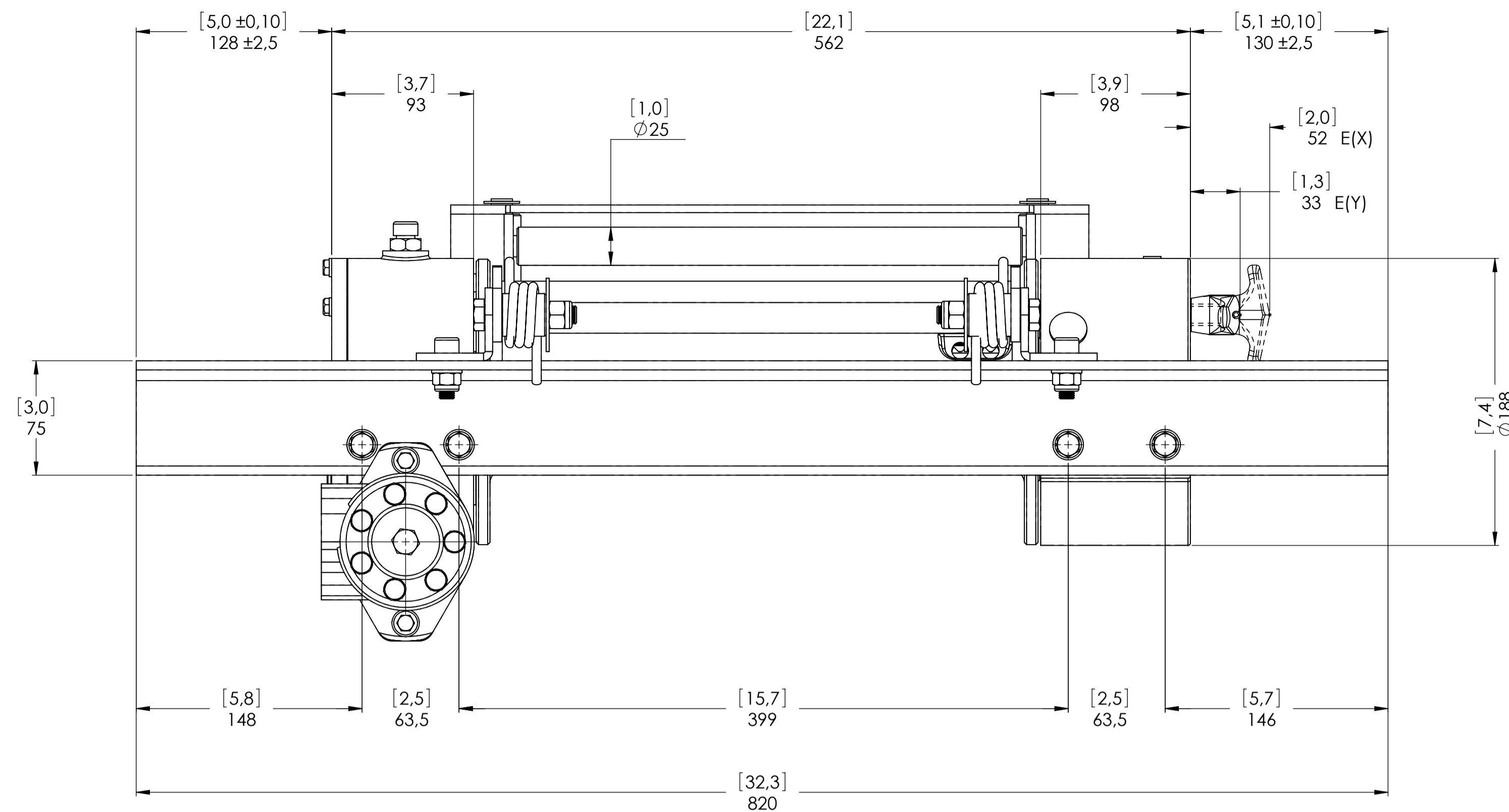


WINCH MODEL		JHL	WINCH GROUP	WORM GEAR	PLUGS
Pulling capacity (Kgs.)		3600	Date	Modification	1.Fill 3/8"G
Max.Oil flow		40 Lt./Min.			2.Level 3/8"G
Speed Line - first layer		3,8 Mt./Min.			3.Drain 3/8"G
Speed Line - top layer		6,9 Mt./Min.			
<b>DANGEROUS:</b> Do not use winch to lift support or transport personnel.					SCALE 1:2,5
					WEIGHTS
					Winch (without oil) 45 Kgs.
Funo - Bologna (Italy) www.vimeindustrial.com					Roller fairlead 4,7 Kgs.
The Quality is Transparent					Heavy-duty roller fairlead -----
VIME Industrial reserves the right to improve its products through changes in designed or materials as it may seem desiderable without notice.					Rope tensioner -----
DATA 9/11/2010					CODE JHL36D50AG


CONNECTIONS	
A	1/2"G
B	1/2"G
E (X) DISENAGED	1/8"G
E (Y) ENGAGED	1/8"G

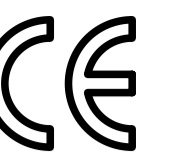


Machinery Directive 2006/42/CE  
EN 14492-1

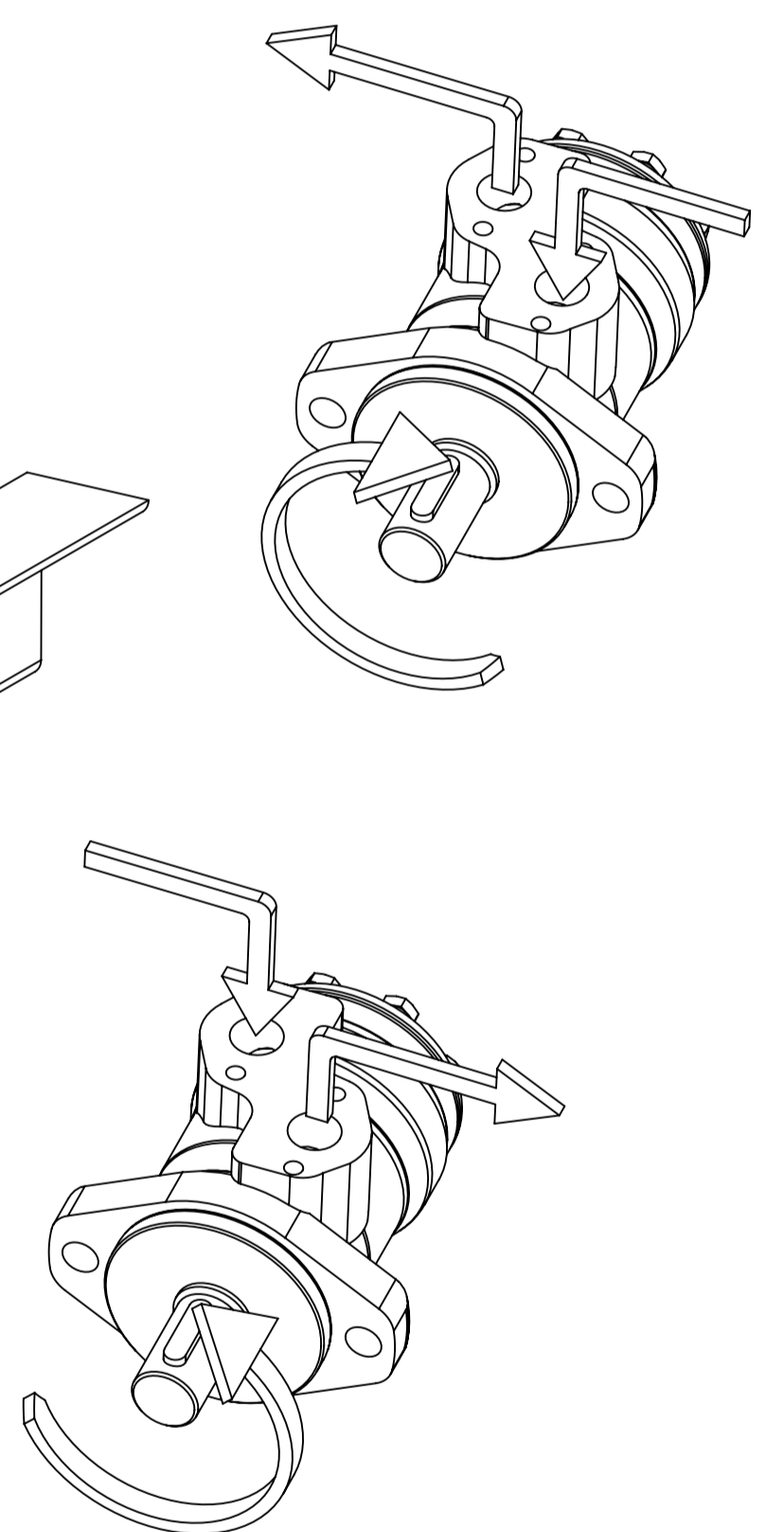
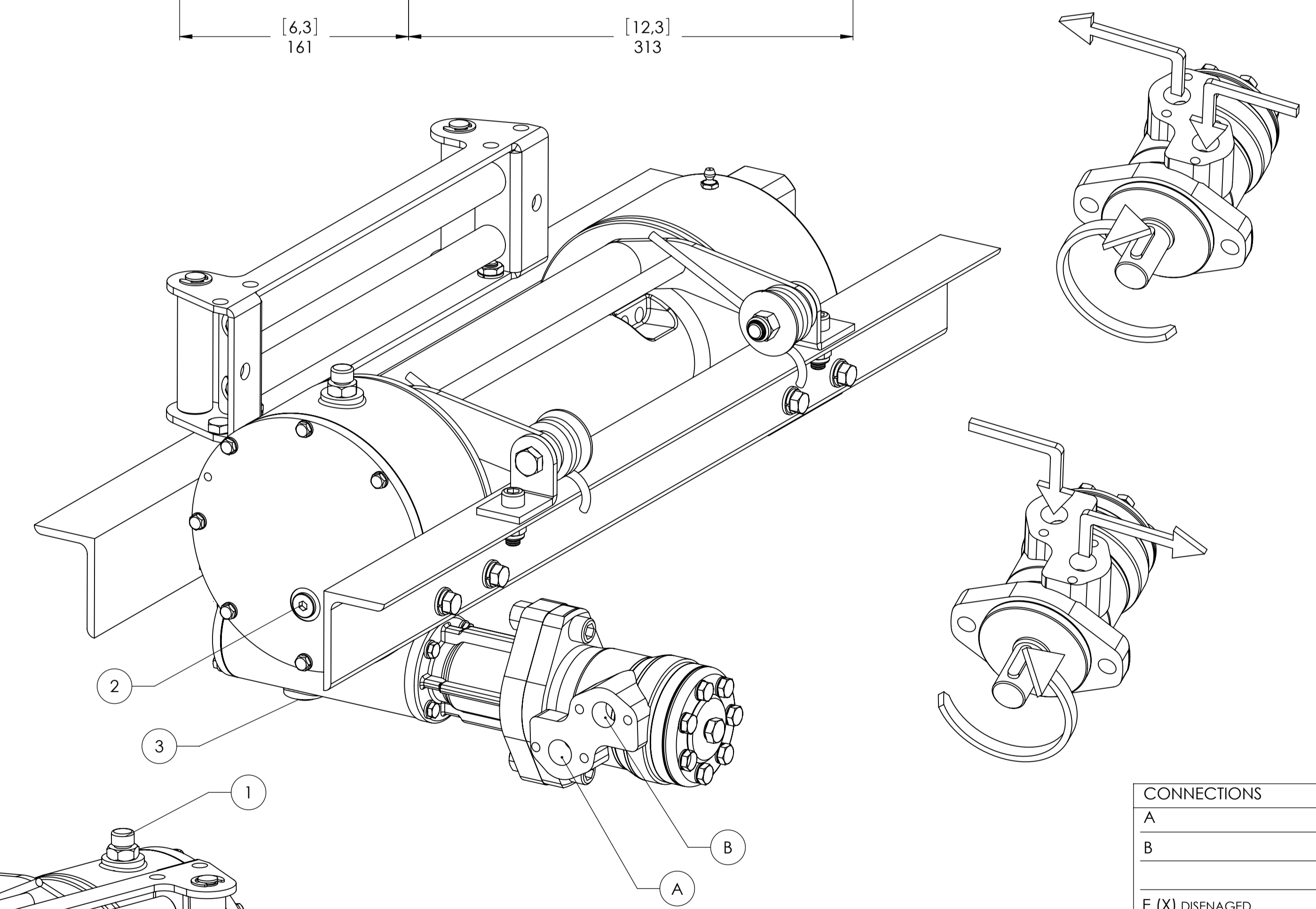
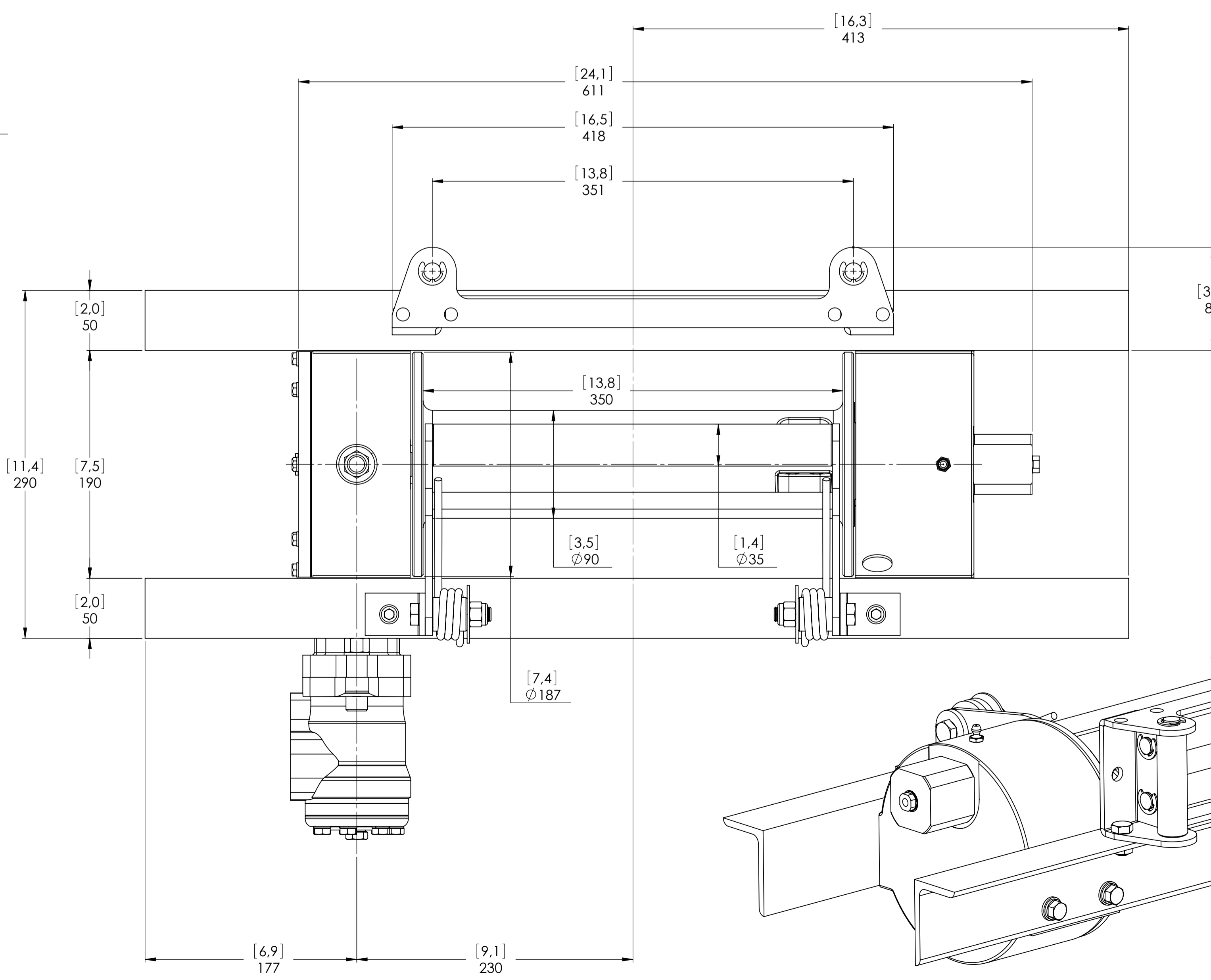
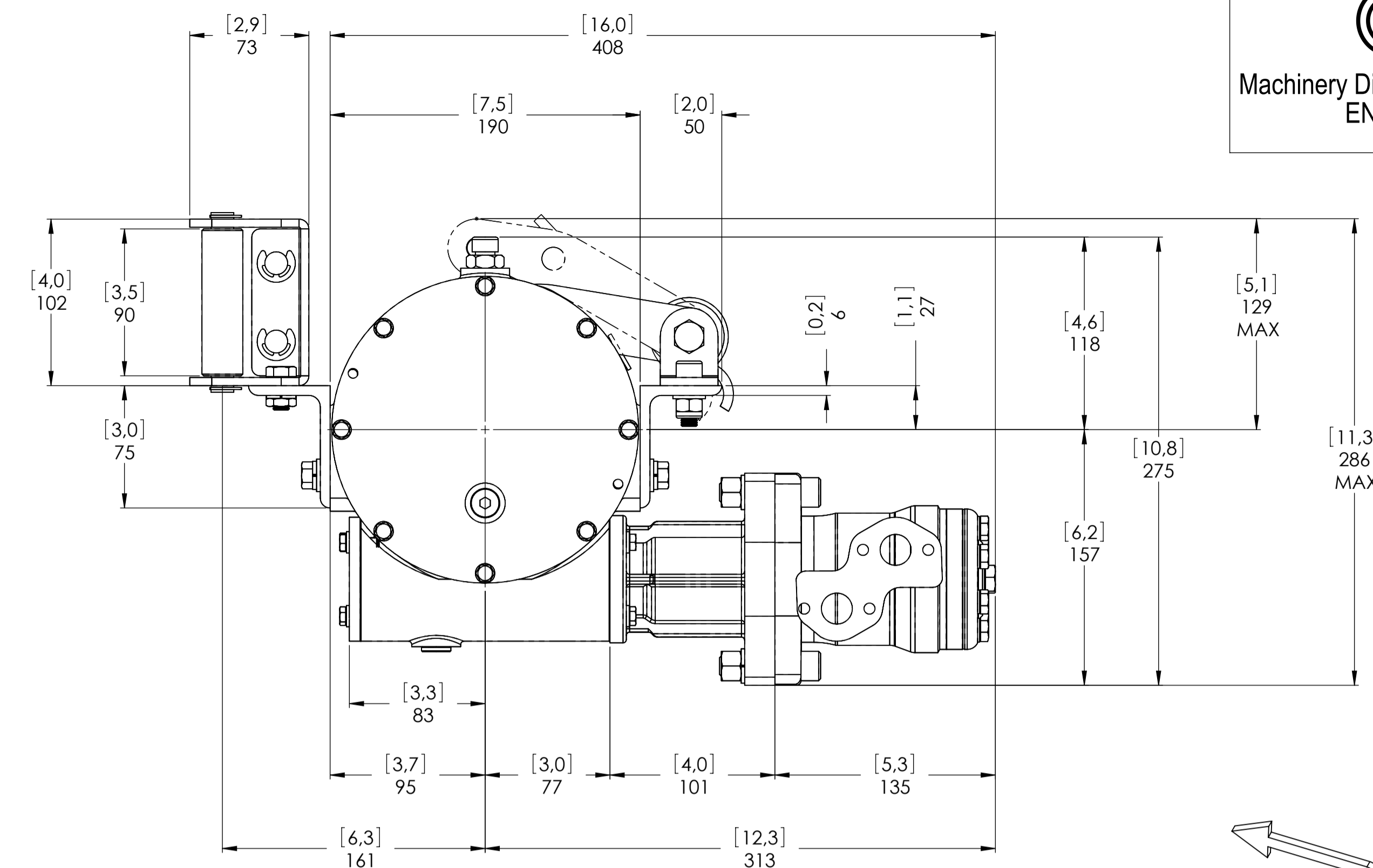
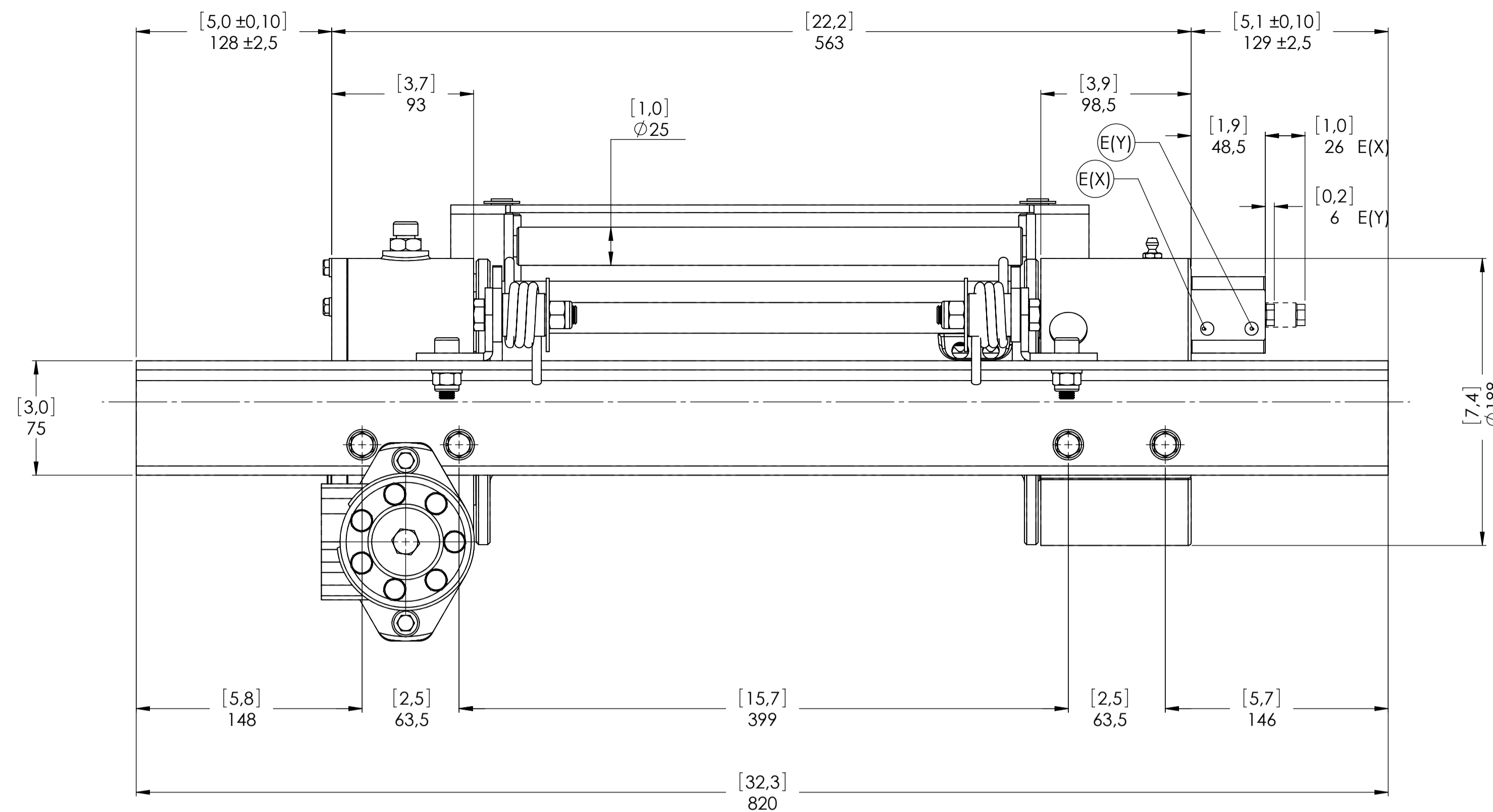


CONNECTIONS	
A	1/2" G
B	1/2" G
E (X) DISENGAGED	-----
E (Y) ENGAGED	-----

WINCH MODEL	JHL	WINCH GROUP	WORM GEAR	PLUGS
Pulling capacity (Kgs.)	3600	Date	Modification	1.Fill 3/8" G
Max.Oil flow	40 Lt./Min.			2.Level 3/8" G
Speed Line - first layer	3,8 Mt./Min.			3.Drain 3/8" G
Speed Line - top layer	6,9 Mt./Min.	<b>DANGEROUS:</b> Do not use winch to lift support or transport personnel.		SCALE 1:2,5
 Funo - Bologna (Italy) www.vimeindustrial.com		Gear ratio	60:1	WEIGHTS
		Orbital hydr. motor	50 cc	Winch (without oil) 45 Kgs.
		Working pressure	130 Bar	Roller fairlead 4,7 Kgs.
		Drum size	350 mm	Heavy-duty roller fairlead -----
		Drum clutch	Manual	Rope tensioner 2,5 Kgs.
The Quality is Transparent		VIME Industrial reserves the right to improve its products through changes in designed or materials as it may seem desirable without notice.		CODE JHL36D50GP
		DATA 09/11/2010		



Machinery Directive 2006/42/CE  
EN 14492-1



WINCH MODEL		JHL	WINCH GROUP	WORM GEAR	PLUGS
Pulling capacity (Kgs.)		3600	Date	Modification	1.Fill 3/8"G
Max.Oil flow		40 Lt./Min.			2.Level 3/8"G
Speed Line - first layer		3,8 Mt./Min.			3.Drain 3/8"G
Speed Line - top layer		6,9 Mt./Min.			
<b>DANGEROUS:</b> Do not use winch to lift support or transport personnel.					SCALE 1:2,5
					WEIGHTS
<b>VIME INDUSTRIAL</b> Funo - Bologna (Italy) www.vimeindustrial.com					Winch (without oil) 45 Kgs.
The Quality is Transparent <b>VIME Industrial</b> reserves the right to improve its products through changes in designed or materials as it may seem desiderable without notice.					Roller fairlead 4,7 Kgs.
					Heavy-duty roller fairlead -----
					Rope tensioner 2,5 Kgs.
					CODE JHL36D50AGP
					DATE 9/11/2010

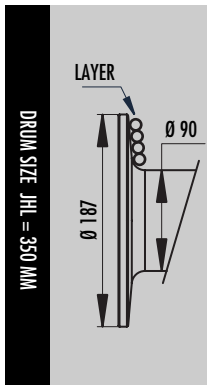
CONNECTIONS	
A	1/2"G
B	1/2"G
E (X) DISENAGED	1/8"G
E (Y) ENGAGED	1/8"G

### 1.4.13 JHL 3600 WINCH TECHNICAL DATA

RATIO	WIRE ROPE SIZE [MM]	LAYER	LINE PULL [KGS]
60:1	10*	1	3.600
		2	3.000
		3	2.570
		4	2.250
		5	2.000

OIL SUPPLY [LT/MIN]	DRUM REVOLUTION [RPM]	LINE SPEED [MT/MIN]				
		1	2	3	4	5
20	5,1	1,6	1,9	2,2	2,6	2,9
30	9,2	2,9	3,5	4,0	4,6	5,2
40	12,2	3,8	4,6	5,4	6,1	6,9

WIRE ROPE MIN. BREAKING LOAD EN 14492-1 [KGS]	7.200
---	-------



LAYER	DRUM DIAMETER [MM]		WIRE ROPE ON LAYER [MT]		WIRE ROPE QUANTITY [MT]	
	00 MM	10 MM	00 MM	10 MM	00 MM	10 MM
	5	-	180	-	19,2	-
4	-	160	-	17,1	-	55,5
3	-	140	-	15,0	-	38,5
2	-	120	-	12,8	-	23,5
1	-	100	-	10,7	-	10,7
0	-	90	-	-	-	-

WIRE ROPE CAPACITY [MT]		MAX. WIRE ROPE CAPACITY EN 14492-1 [MT]		MAX. WIRE ROPE CAPACITY [MT]	
00 MM	10 MM	00 MM	00 MM	00 MM	10 MM
-	40	-	55**	-	74

DESCRIPTION	WEIGHT
	[KGS]
WINCH (WITHOUT CABLE)	45
ACCESSORY : ROLLERFAILREAD	4,7
ACCESSORY : CABLE TENSIONER	2,5

#### NOTES

Specifications are subject to change without notification and without incurring obligation. Specifications in this publication are theoretical and may vary depending on hydraulic system, environment, etc.

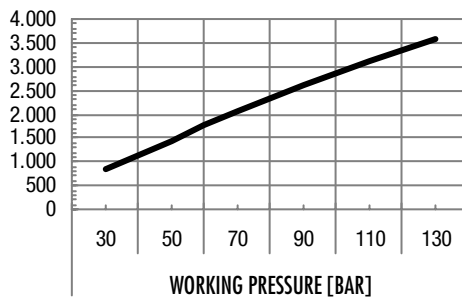
#### NOTES

\*Wire rope size must be respected. Recommended wire rope min. tensile strength 2160 N/mm<sup>2</sup>.  
Wire rope minimum breaking load must be at least double of winch max. pulling capacity.

\*\* Max. wire rope capacity according with EN 14492-1.

### 1.4.14 JHL 3600 WINCH PERFORMANCE CHARTS AT THE 1<sup>ST</sup> LAYER

LINE PULL-FIRST LAYER [KGS]



LINE SPEED [MT/MIN]

