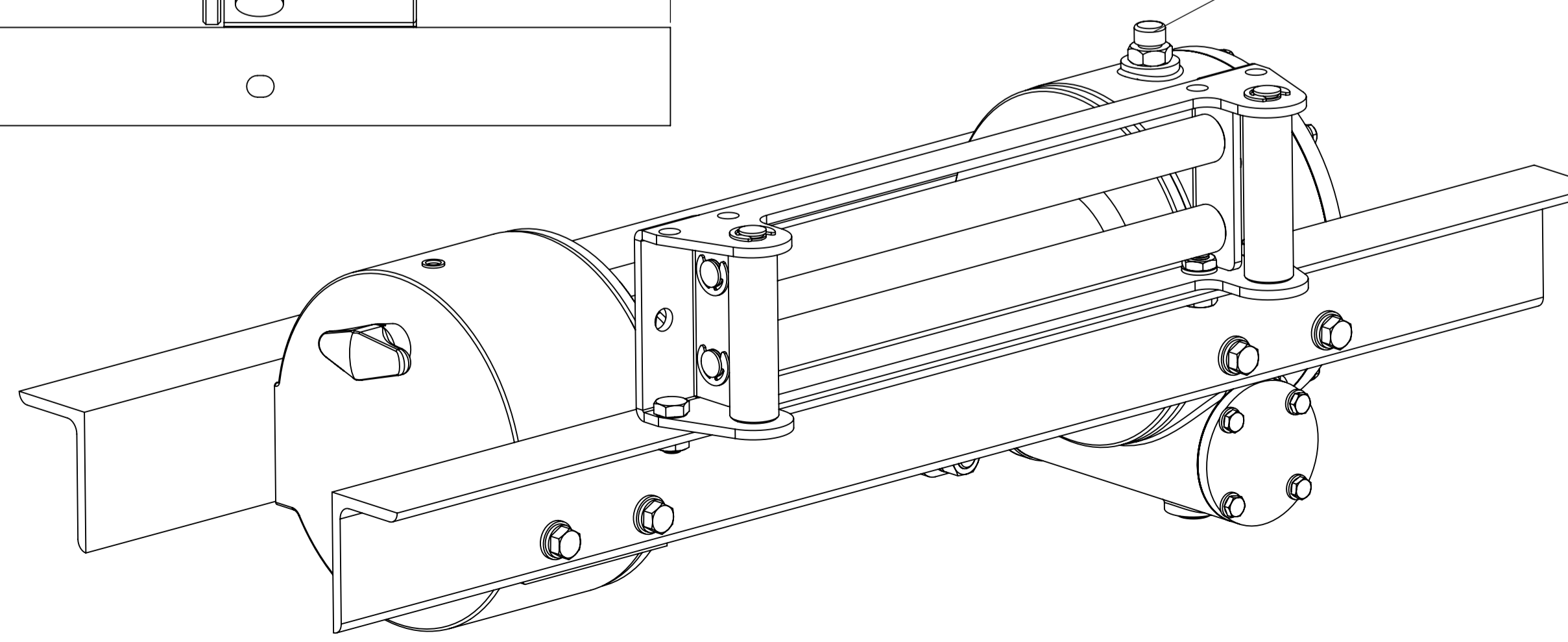
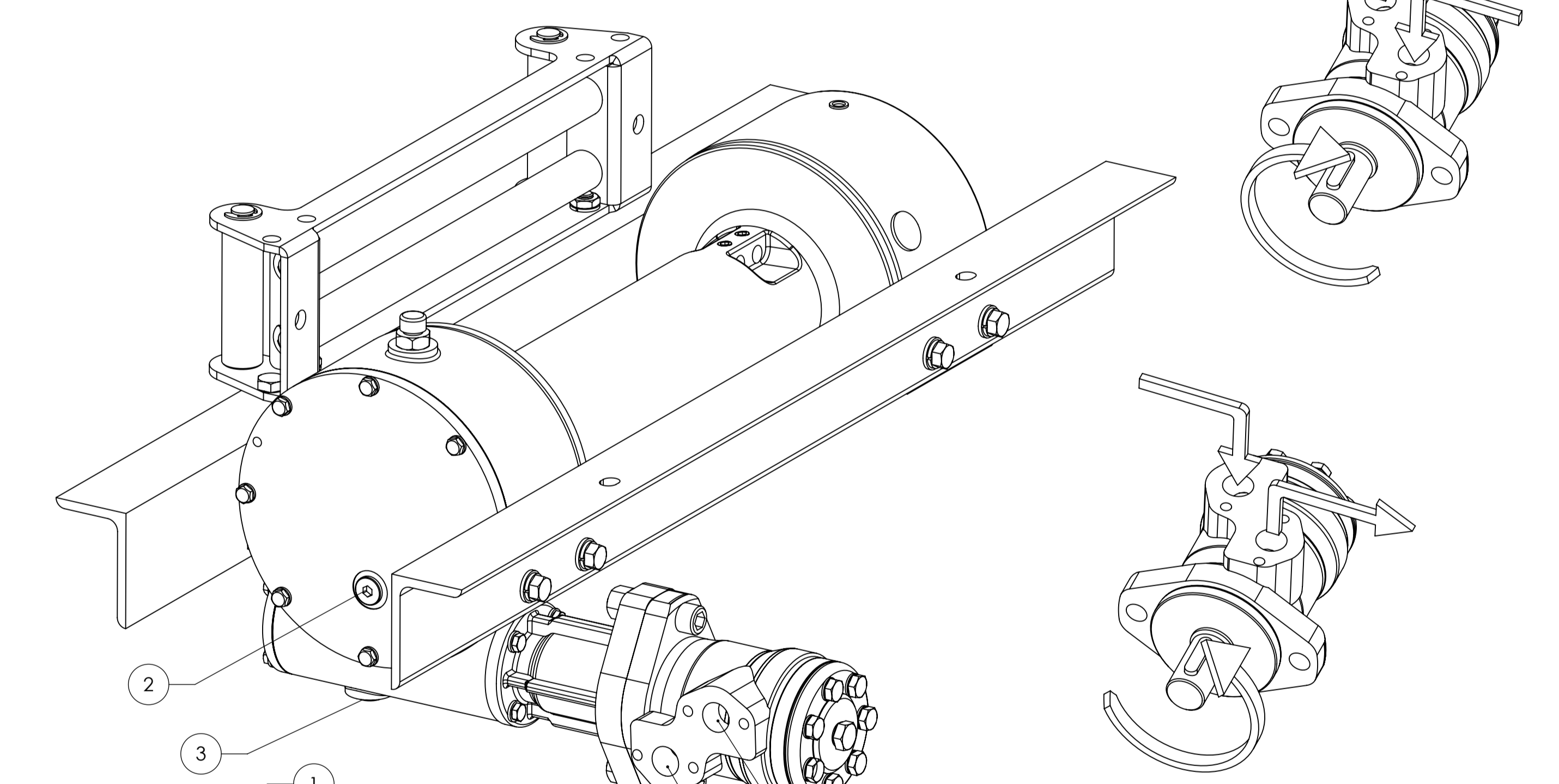
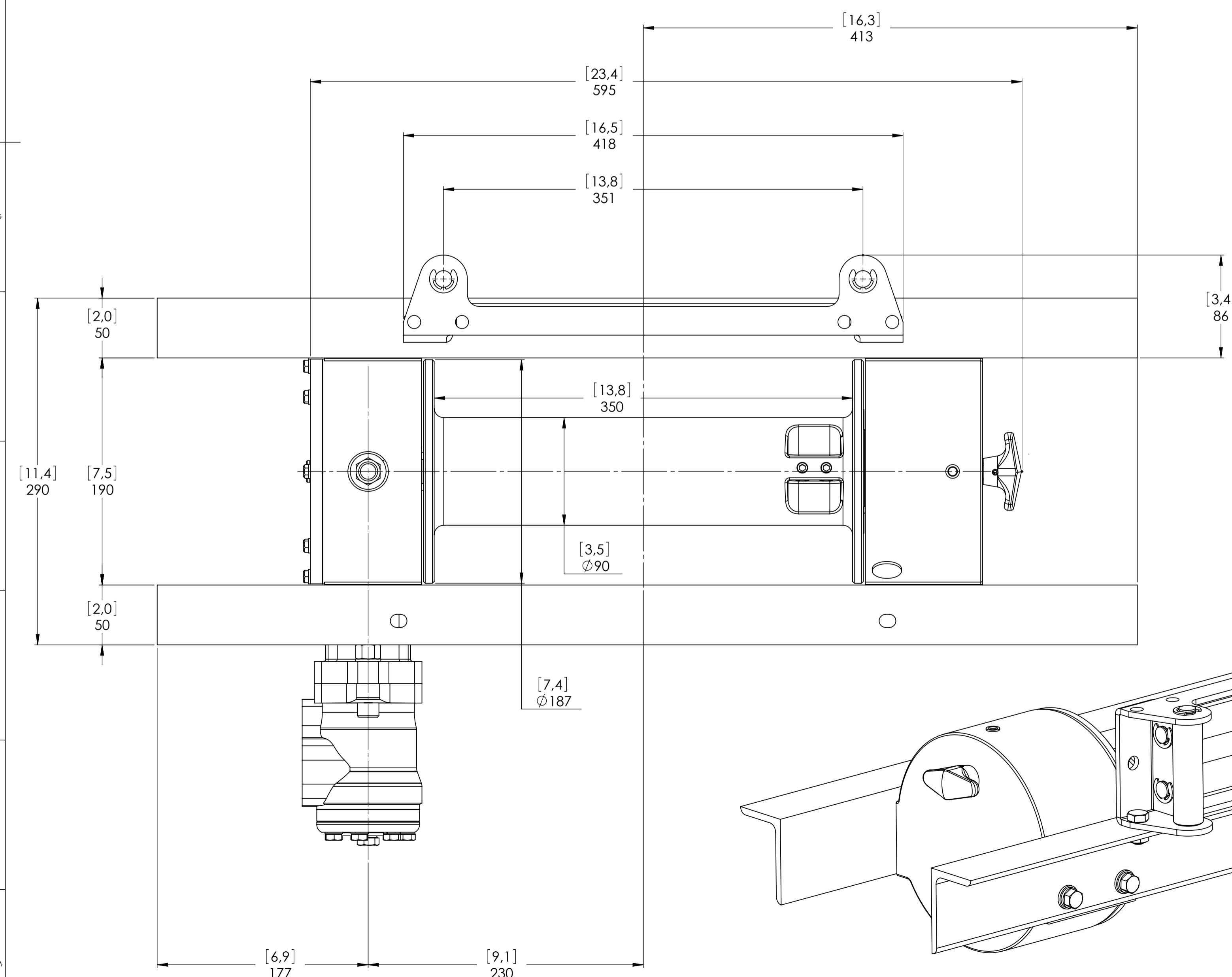
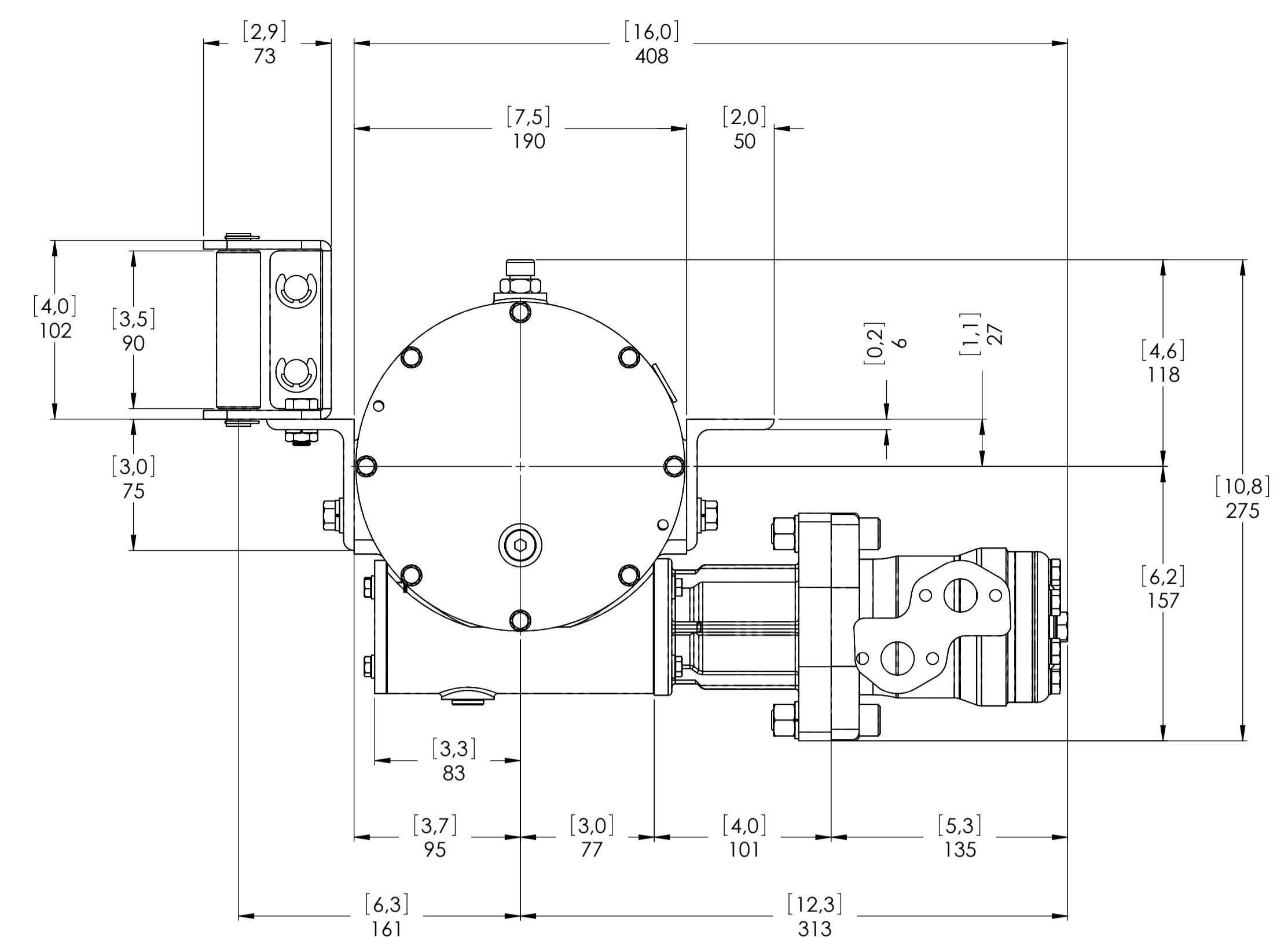
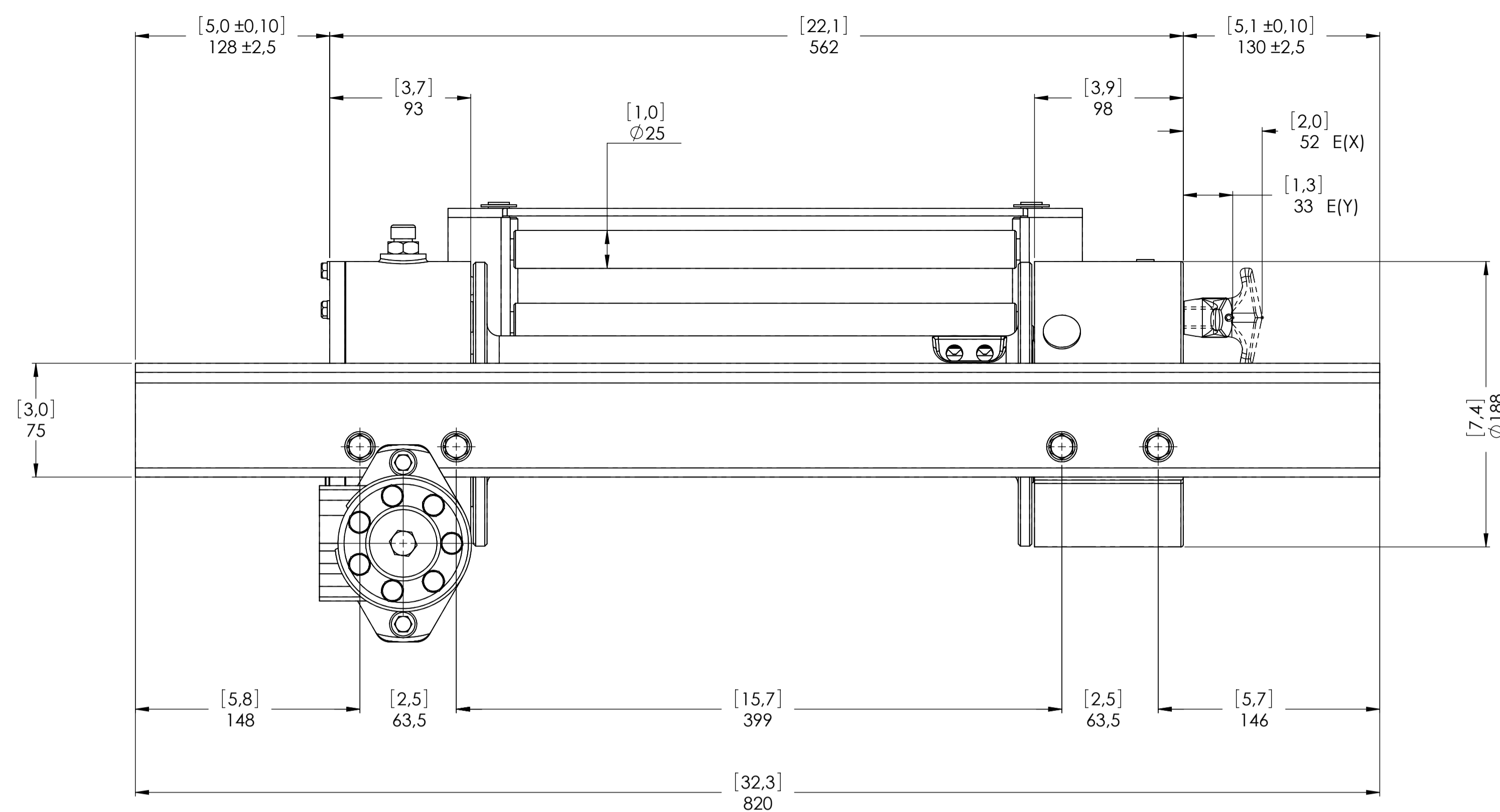


Machinery Directive 2006/42/CE
EN 14492-1



CONNECTIONS	
A	1/2" G
B	1/2" G
E (X) DISENGAGED	-----
E (Y) ENGAGED	-----

WINCH MODEL	JHL	WINCH GROUP	WORM GEAR	PLUGS
Pulling capacity (Kgs.)	2700	Date	Modification	1.Fill 3/8" G
Max.Oil flow	40 Lt./Min.			2.Level 3/8" G
Speed Line - first layer	4,9 Mt./Min.			3.Drain 3/8" G
Speed Line - top layer	8,1 Mt./Min.			
				DANGEROUS: Do not use winch to lift support or transport personnel.
				SCALE 1:2,5

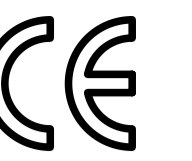
WEIGHTS	
Winch (without oil)	45 Kgs.
Roller fairlead	4,7 Kgs.
Heavy-duty roller fairlead	-----
Rope tensioner	-----
CODE	JHL27D50G



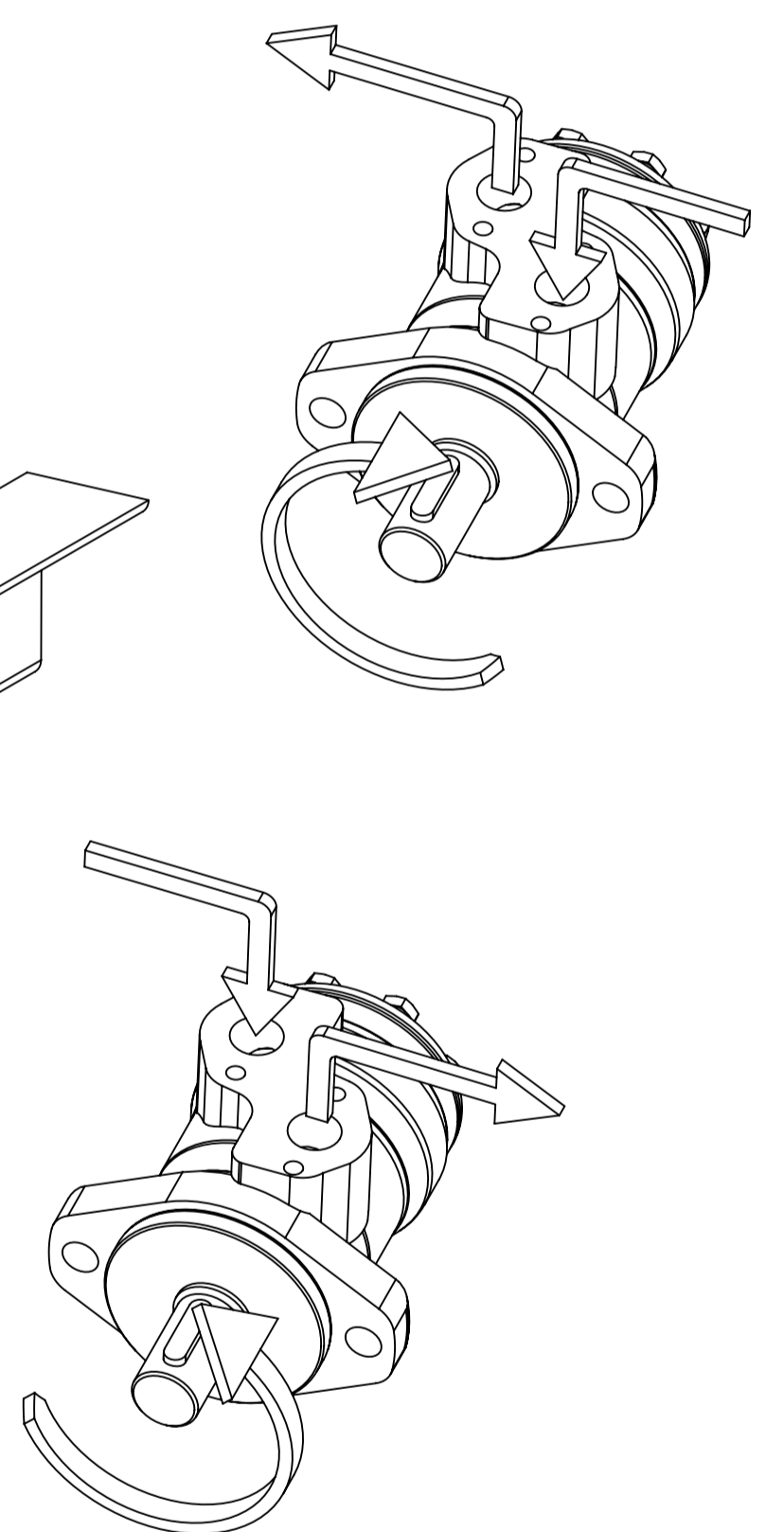
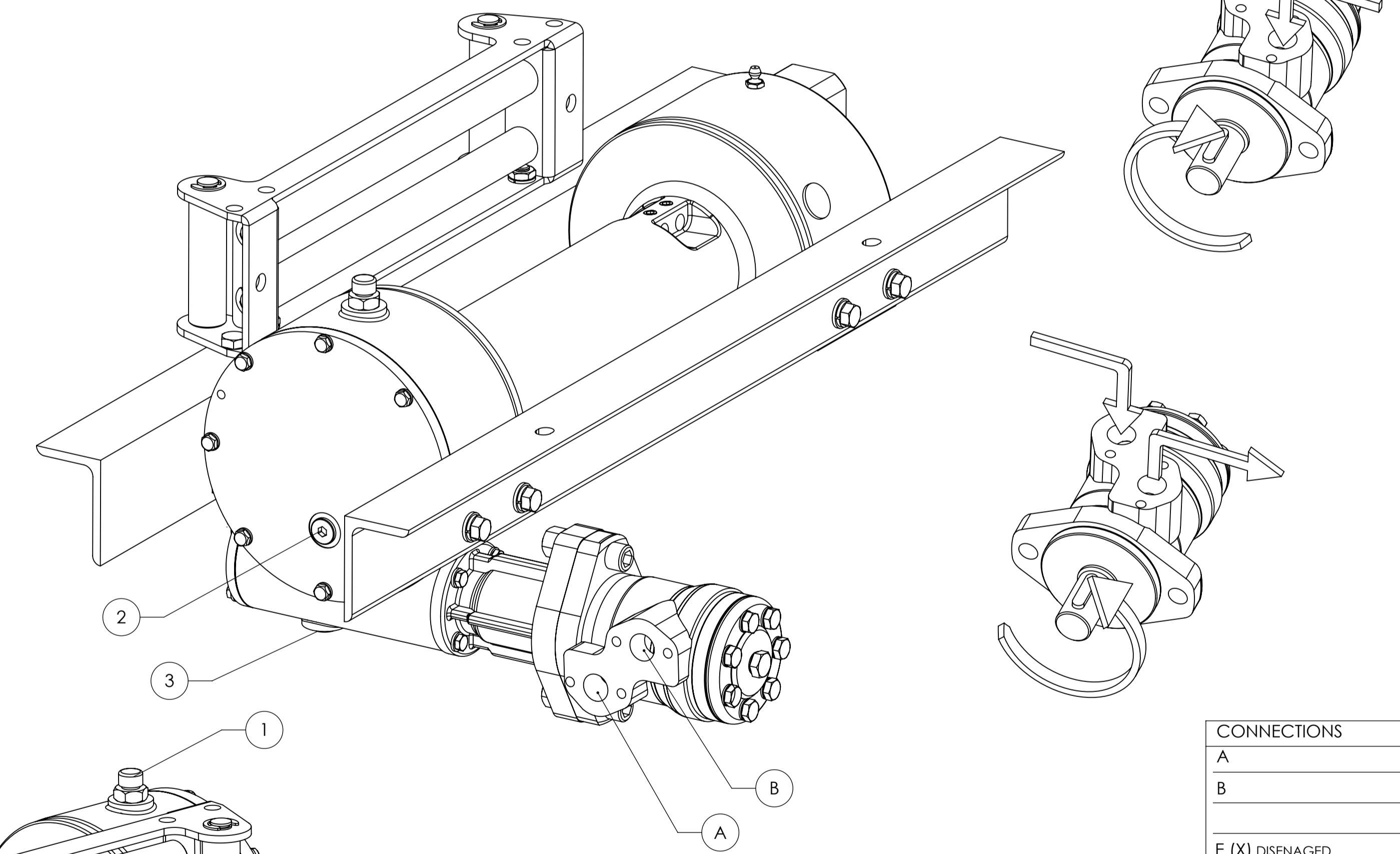
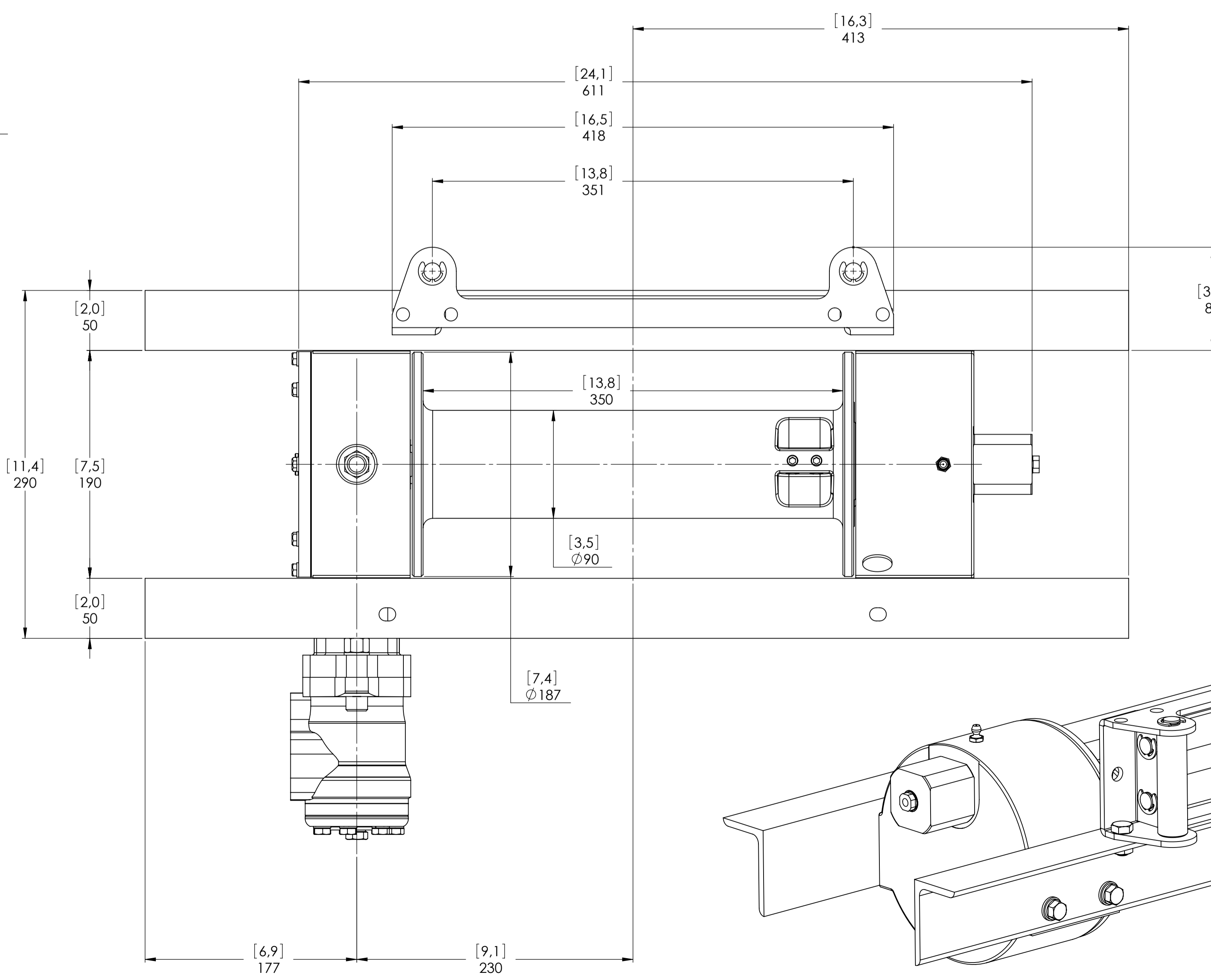
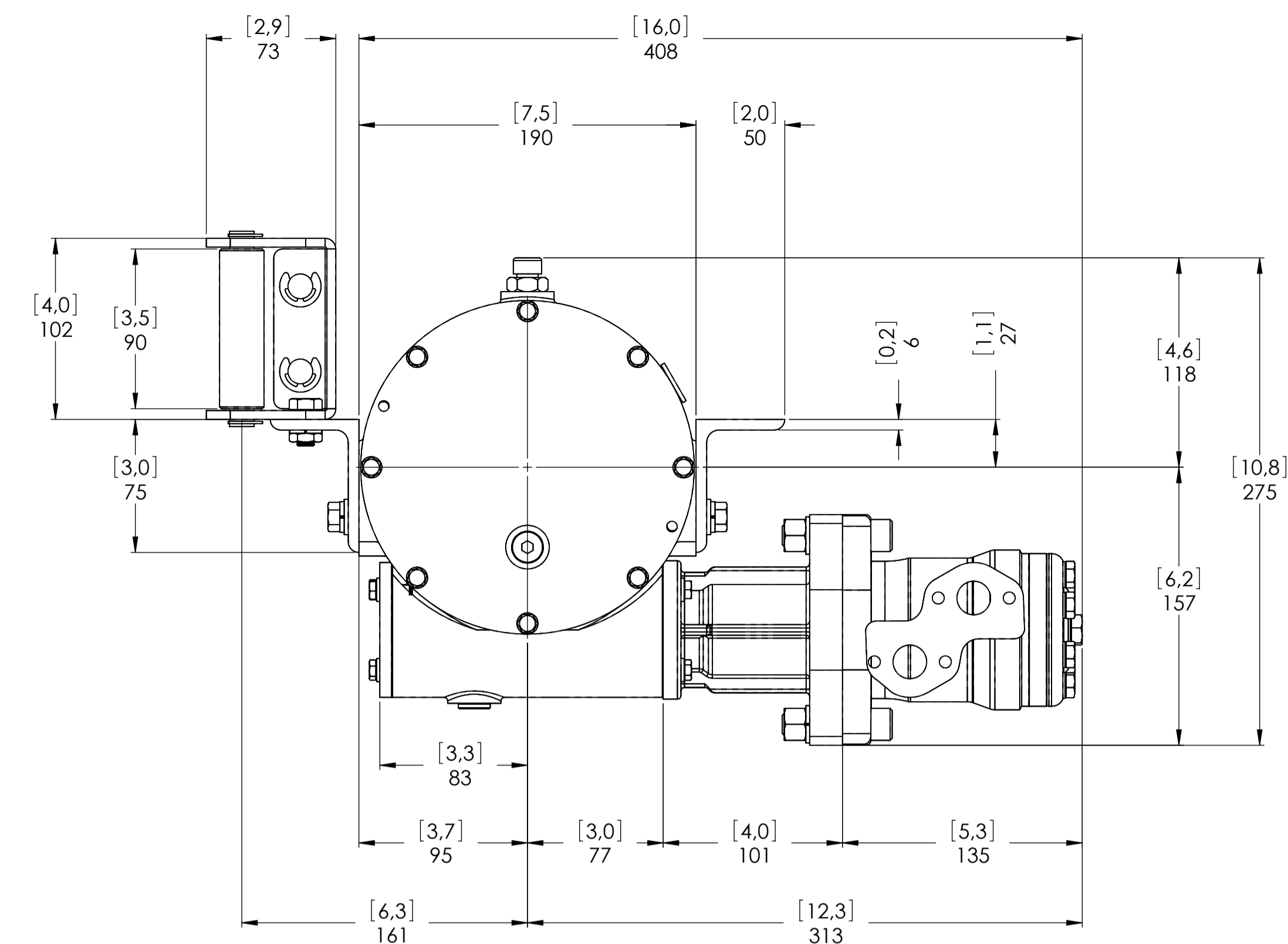
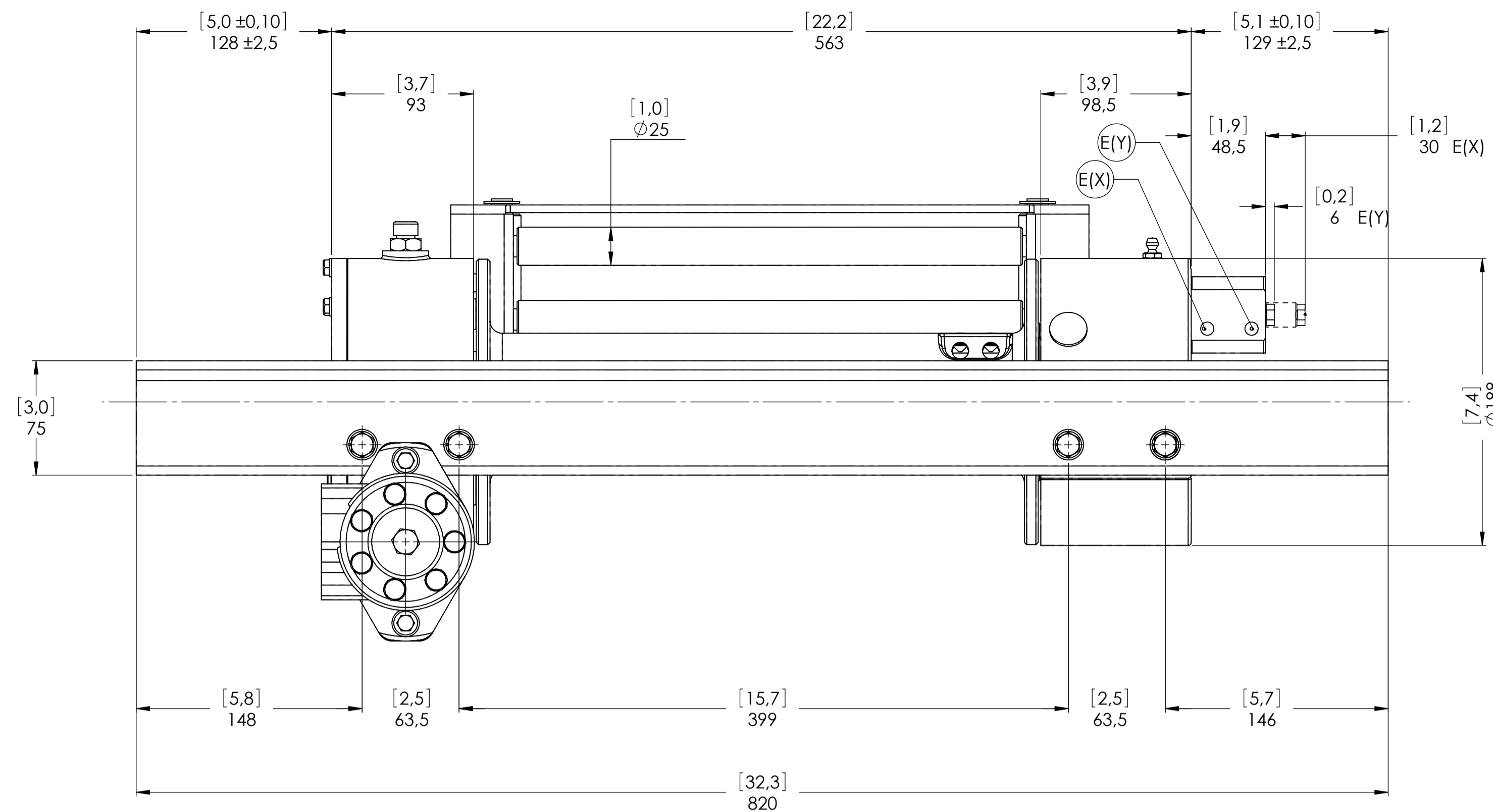
Funo - Bologna (Italy)
www.vimeindustrial.com

The Quality is Transparent
VIME Industrial reserves the right to improve its products through changes in designed or materials as it may seem desirable without notice

DATA
09/11/2010

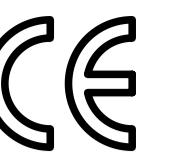


Machinery Directive 2006/42/CE
EN 14492-1

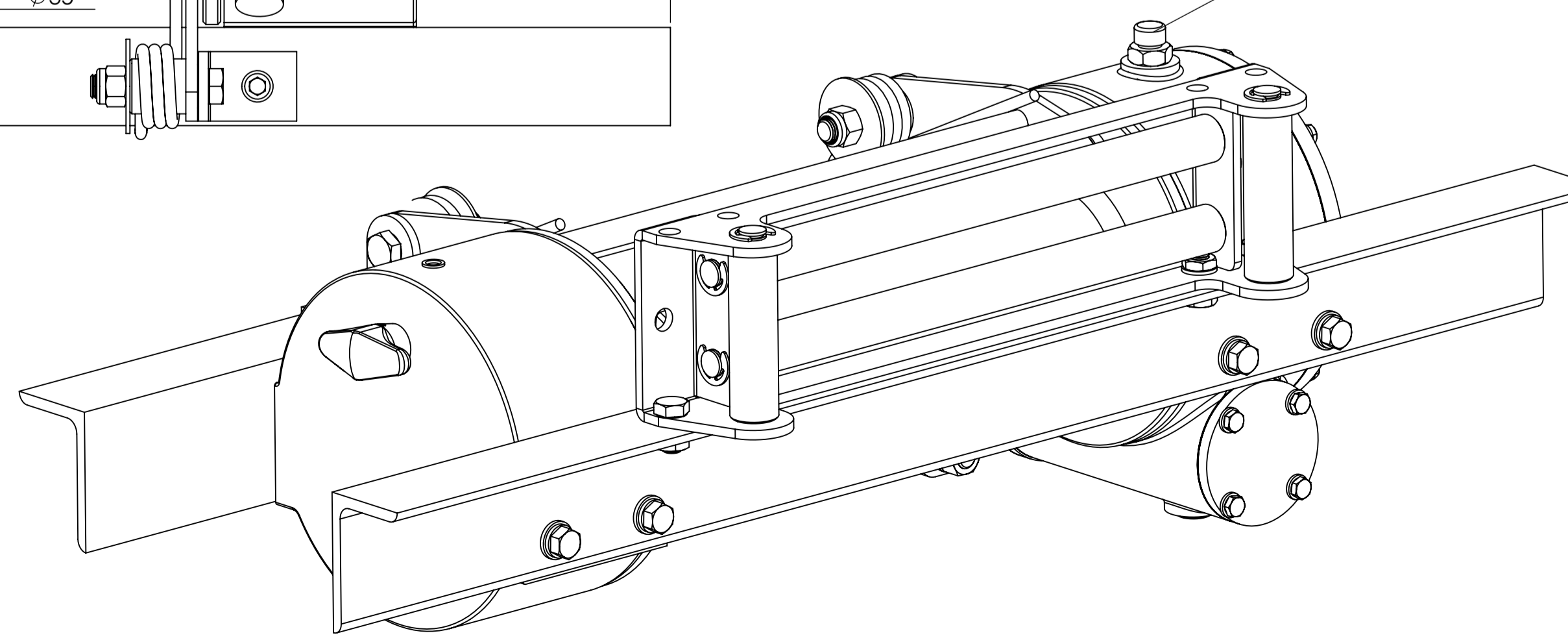
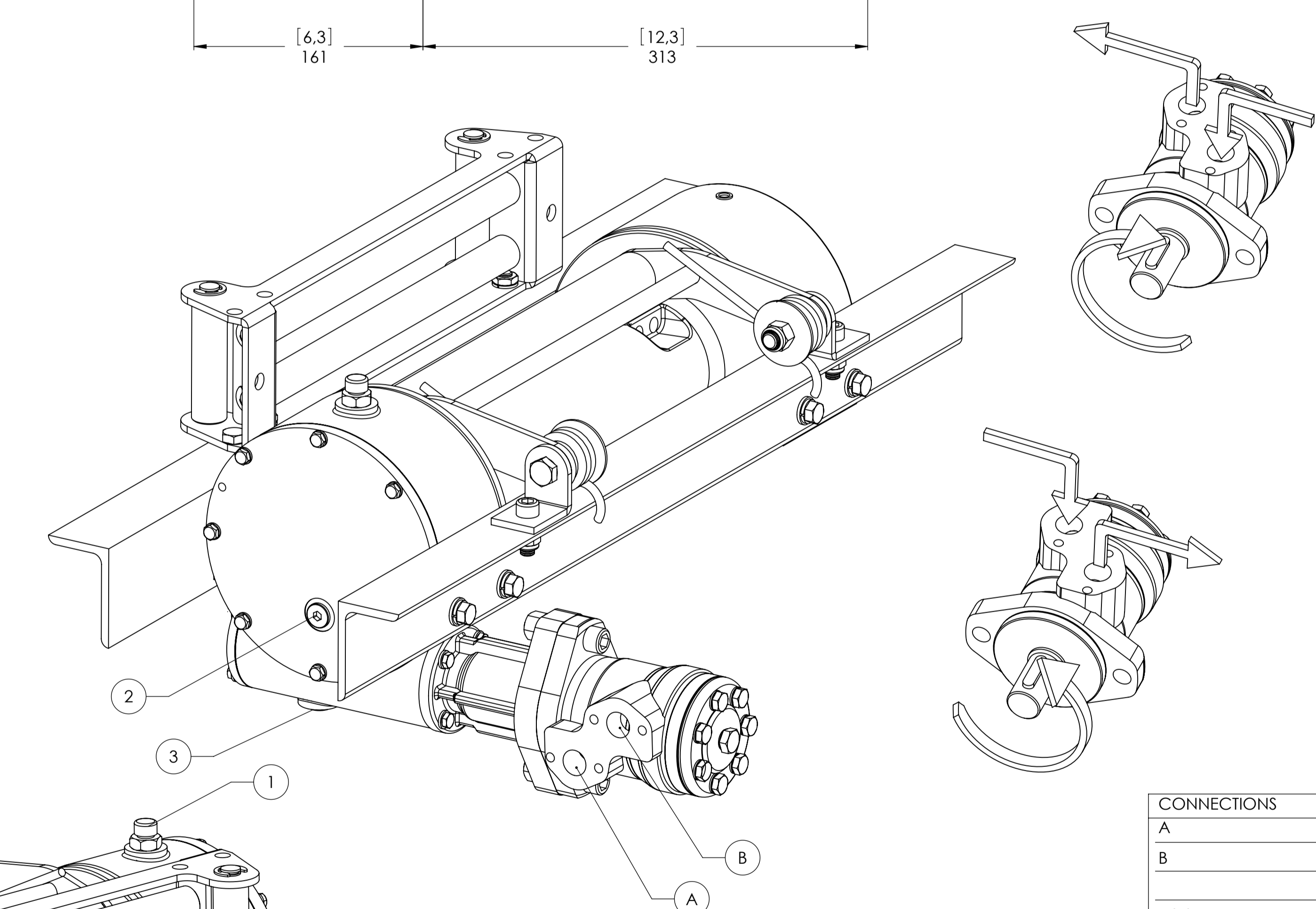
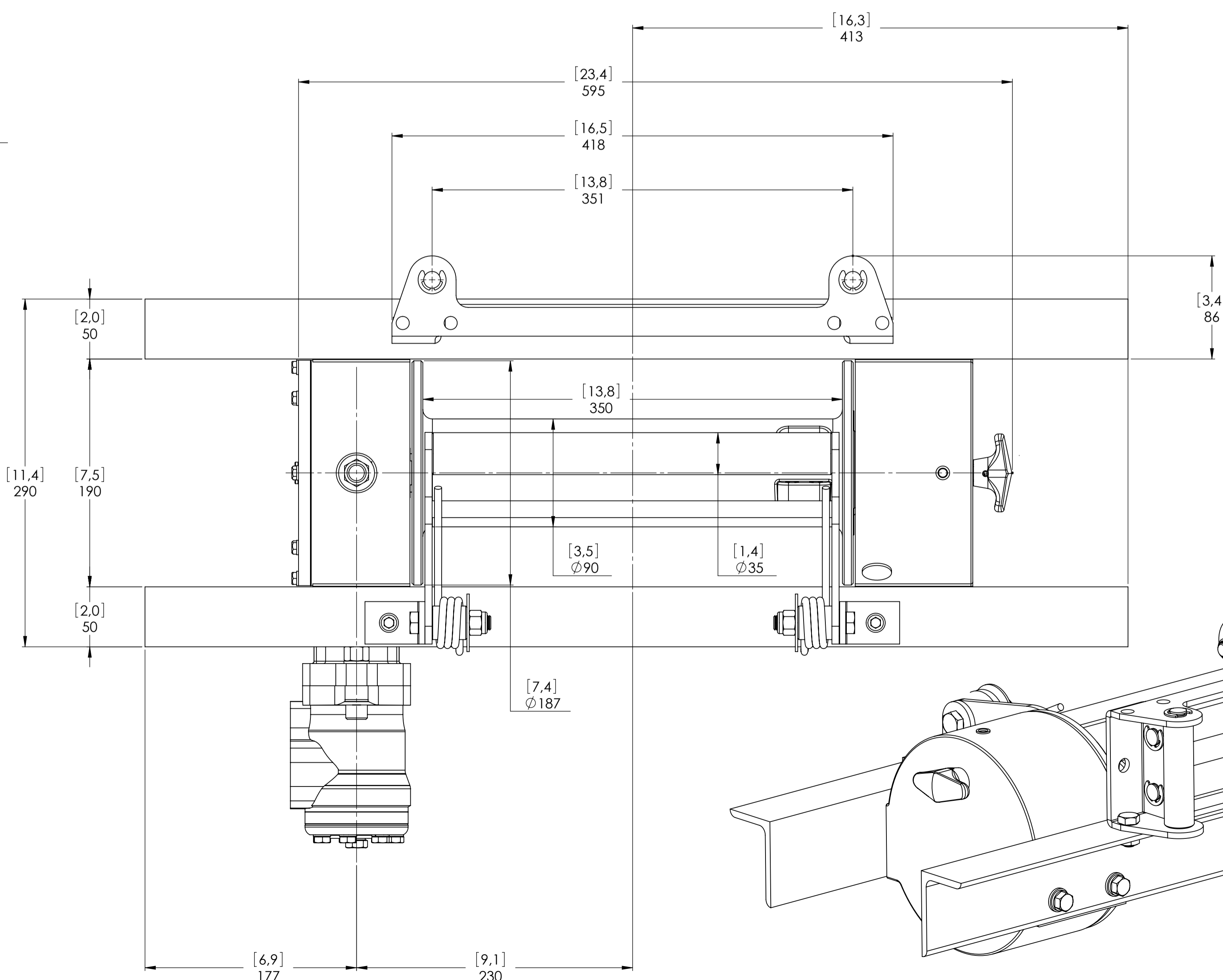
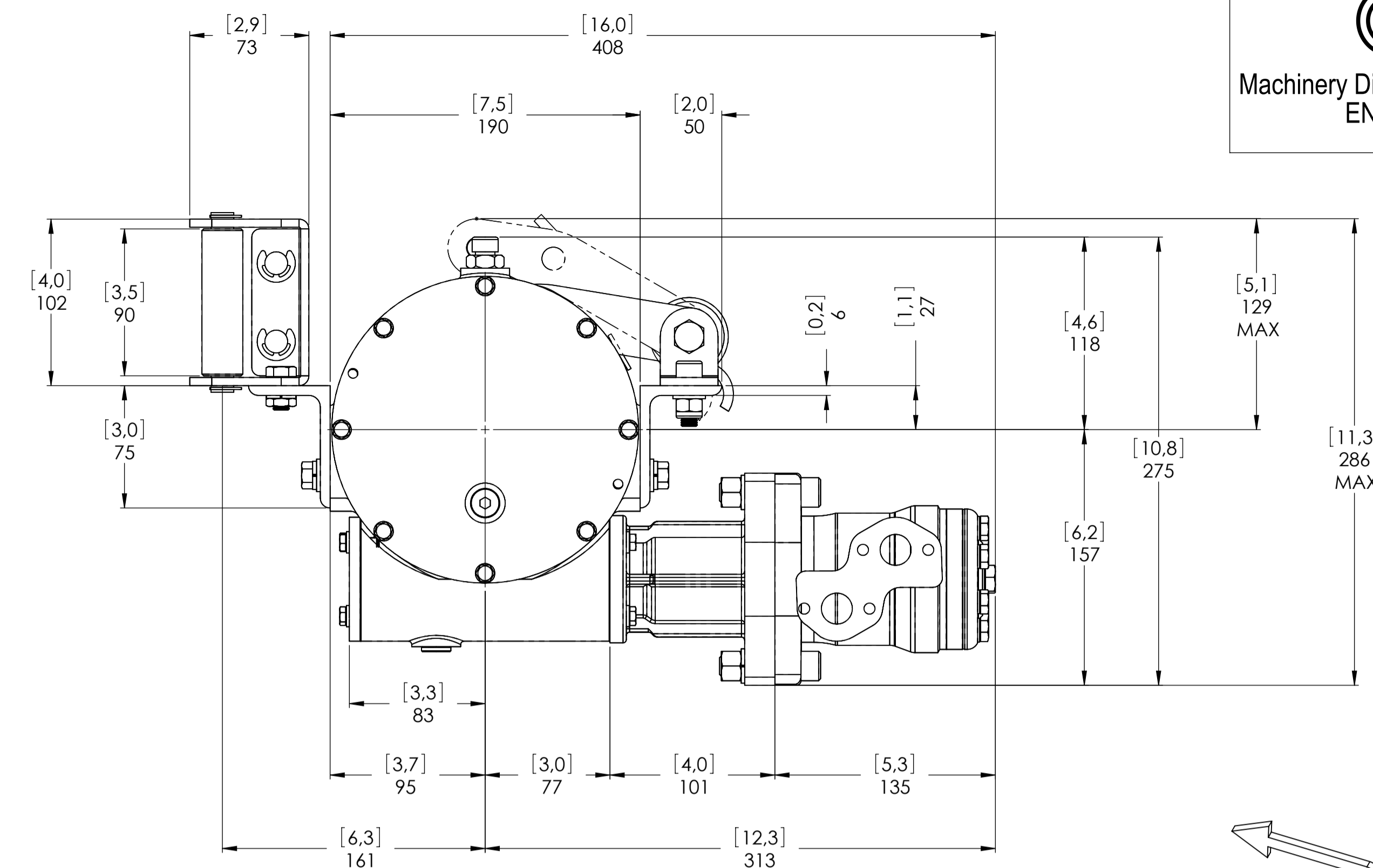
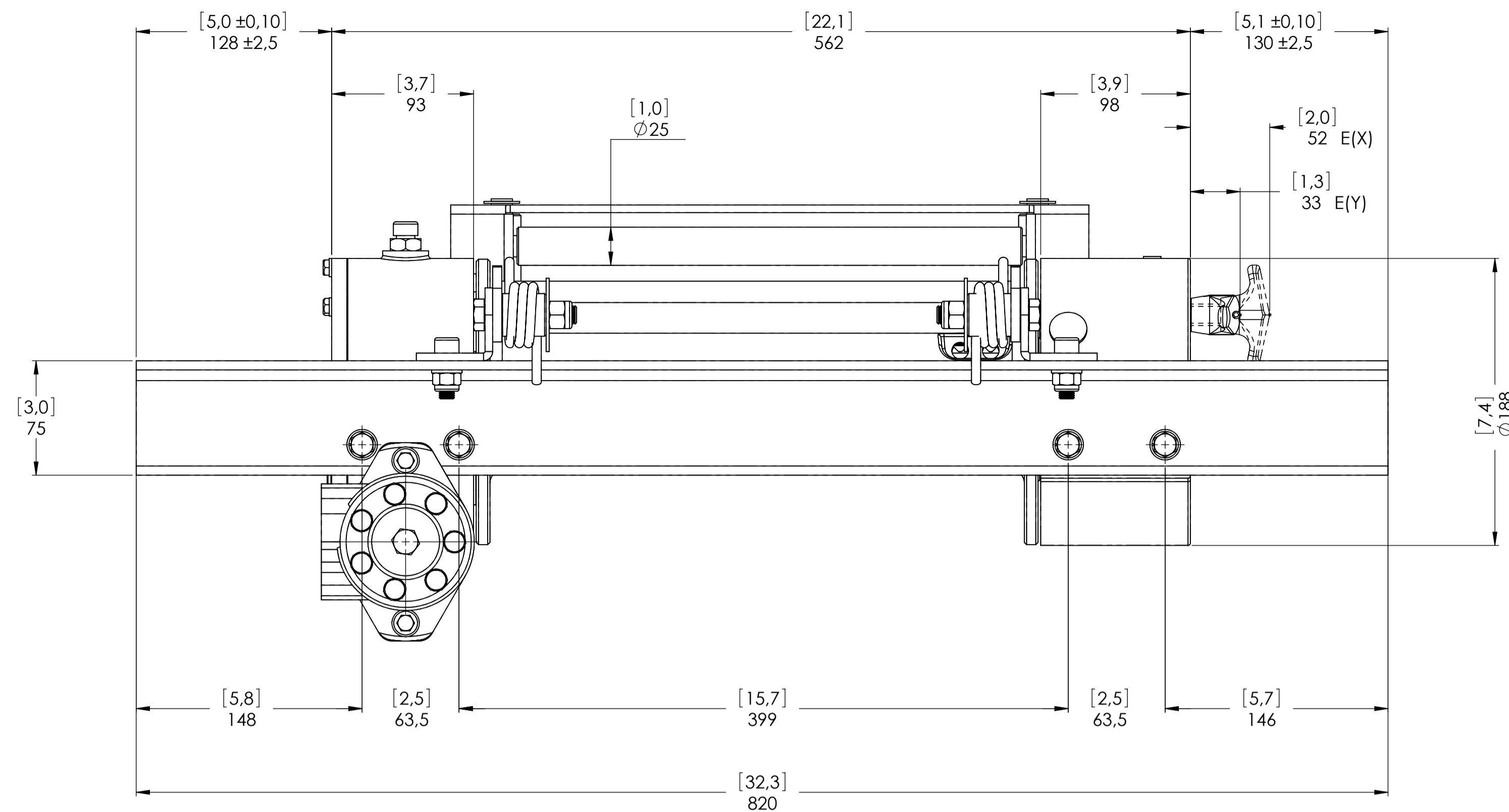


WINCH MODEL		WINCH GROUP		PLUGS	
JHL		WORM GEAR		1.Fill 3/8" G	
Pulling capacity (Kgs.) 2700		Date		2.Level 3/8" G	
Max.Oil flow 40 Lt./Min.		Modification		3.Drain 3/8" G	
Speed Line - first layer 4,9 Mt./Min.		DANGEROUS: Do not use winch to lift support or transport personnel.		SCALE 1:2,5	
Speed Line - top layer 8,1 Mt./Min.				WEIGHTS	
Gear ratio 46:1		Orbital hydr. motor 50 cc		Winch (without oil) 45 Kgs.	
Working pressure 130 Bar		Drum size 350 mm		Roller fairlead 4,7 Kgs.	
Drum clutch Air-operated		Drum clutch Air-operated		Heavy-duty roller fairlead -----	
The Quality is Transparent		VIME Industrial reserves the right to improve its products through changes in designed or materials as it may seem desiderable without notice		Rope tensioner -----	
Funo - Bologna (Italy) www.vimeindustrial.com		DATA 9/11/2010		CODE JHL27D50AG	

CONNECTIONS	
A	1/2" G
B	1/2" G
E (X) DISENAGED	1/8" G
E (Y) ENGAGED	1/8" G

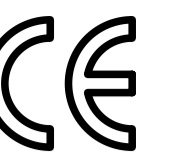


Machinery Directive 2006/42/CE
EN 14492-1

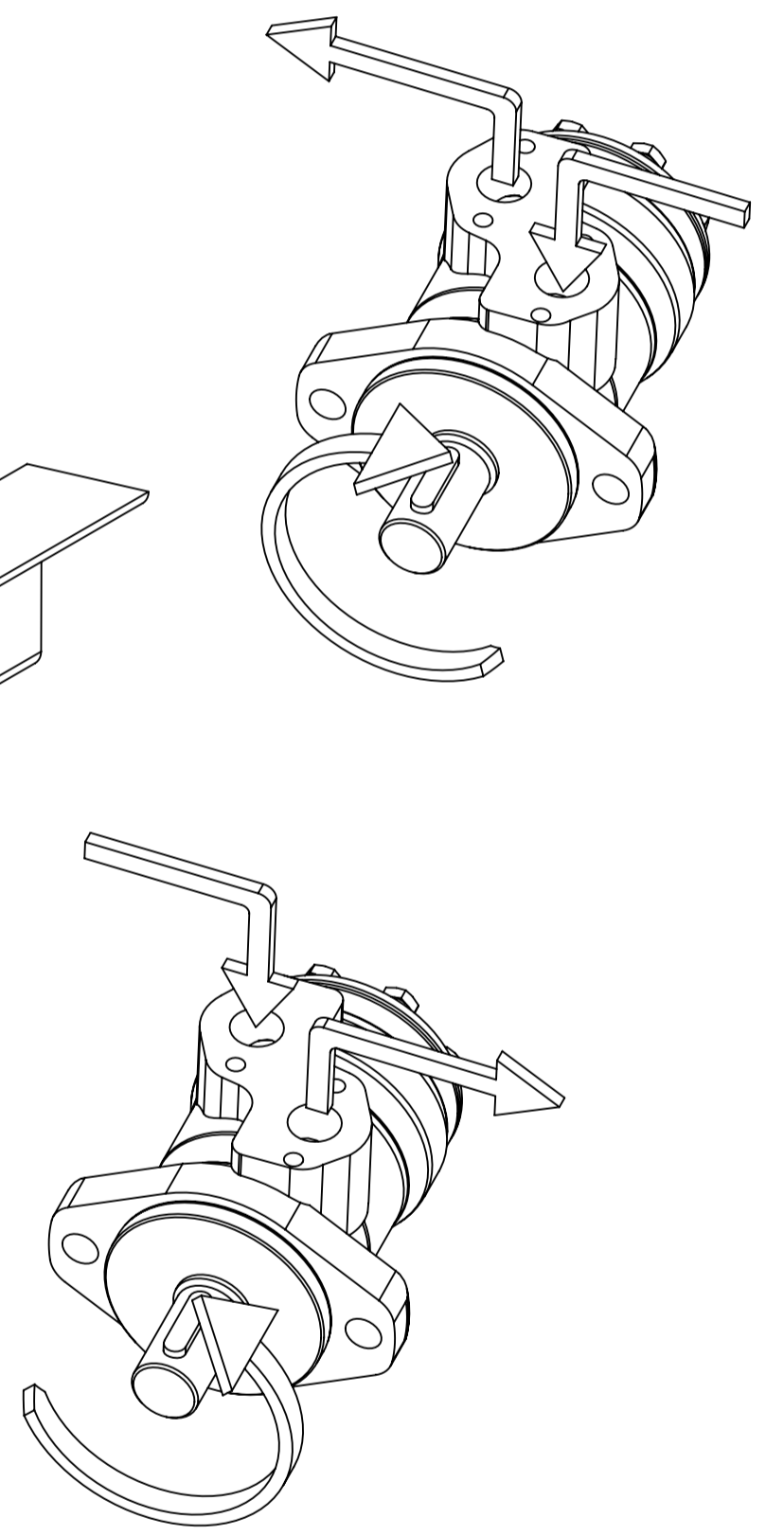
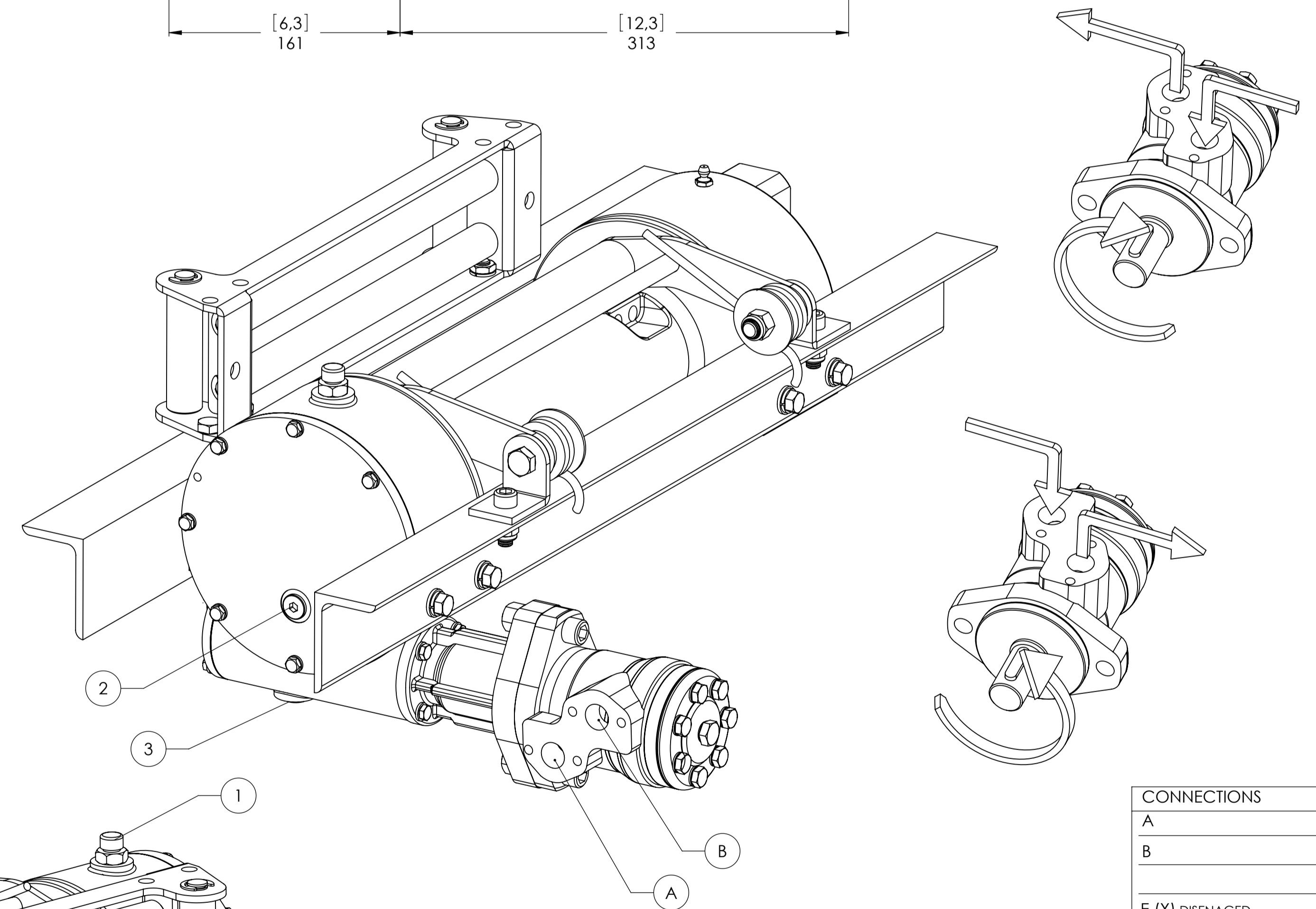
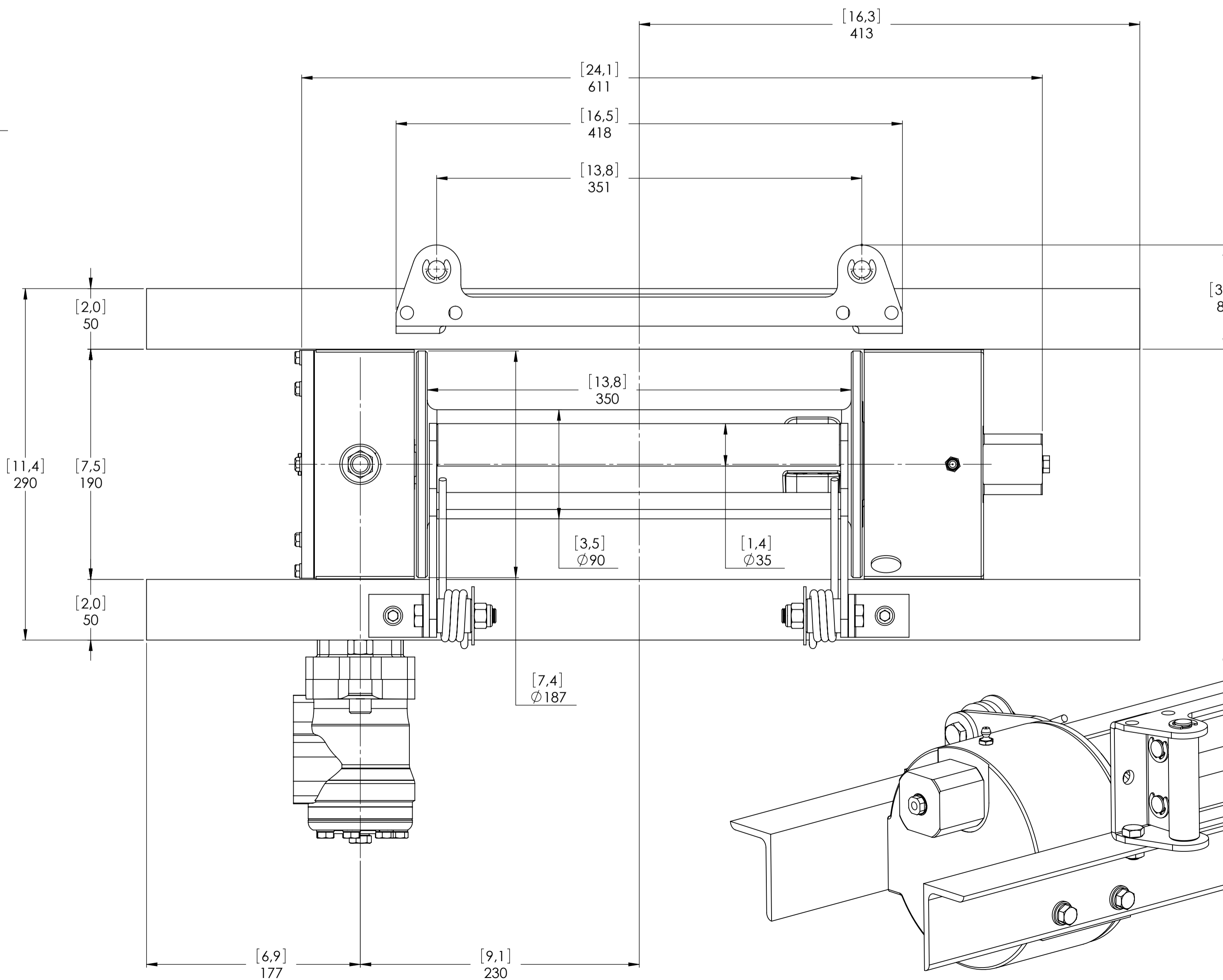
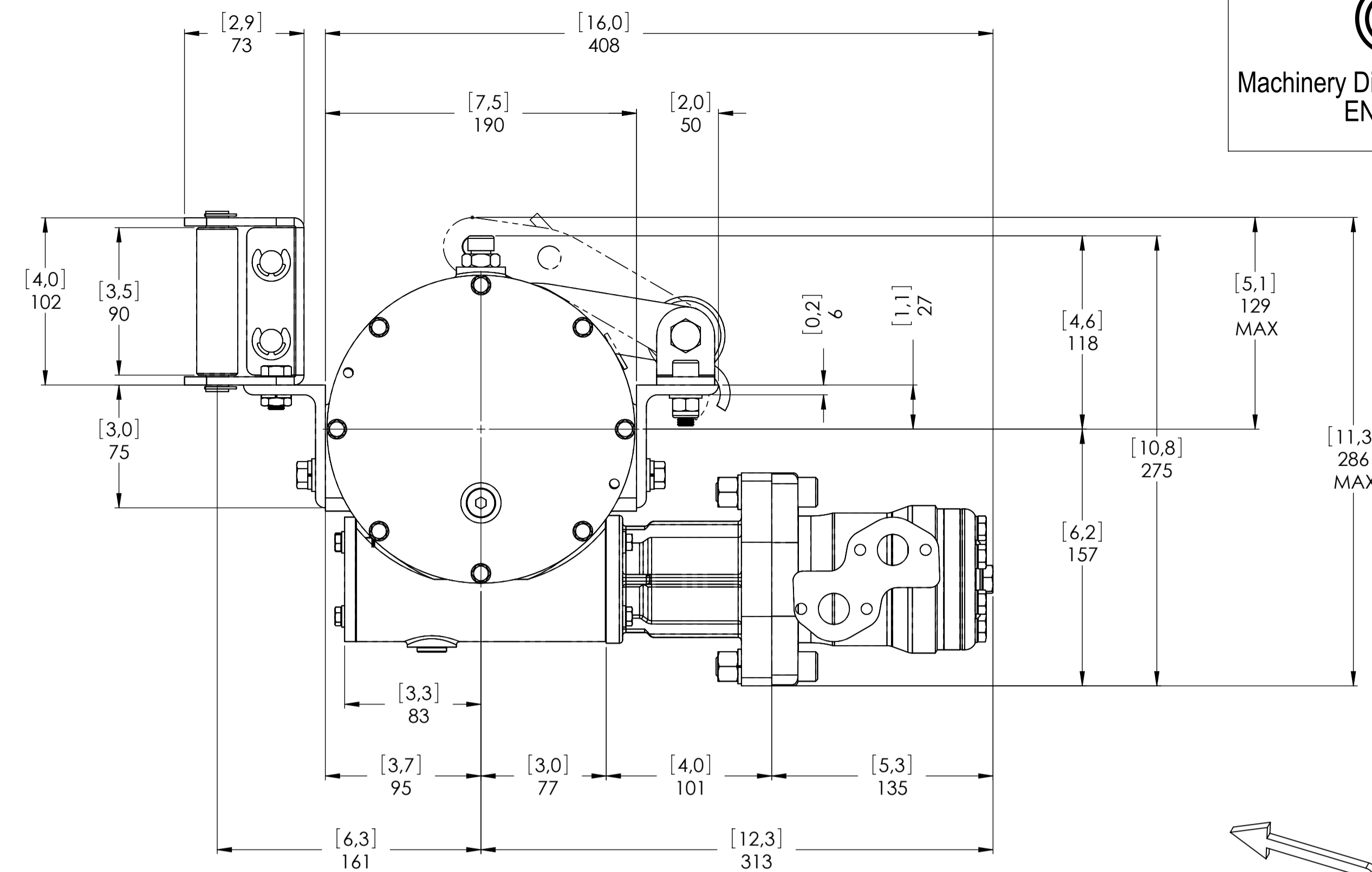
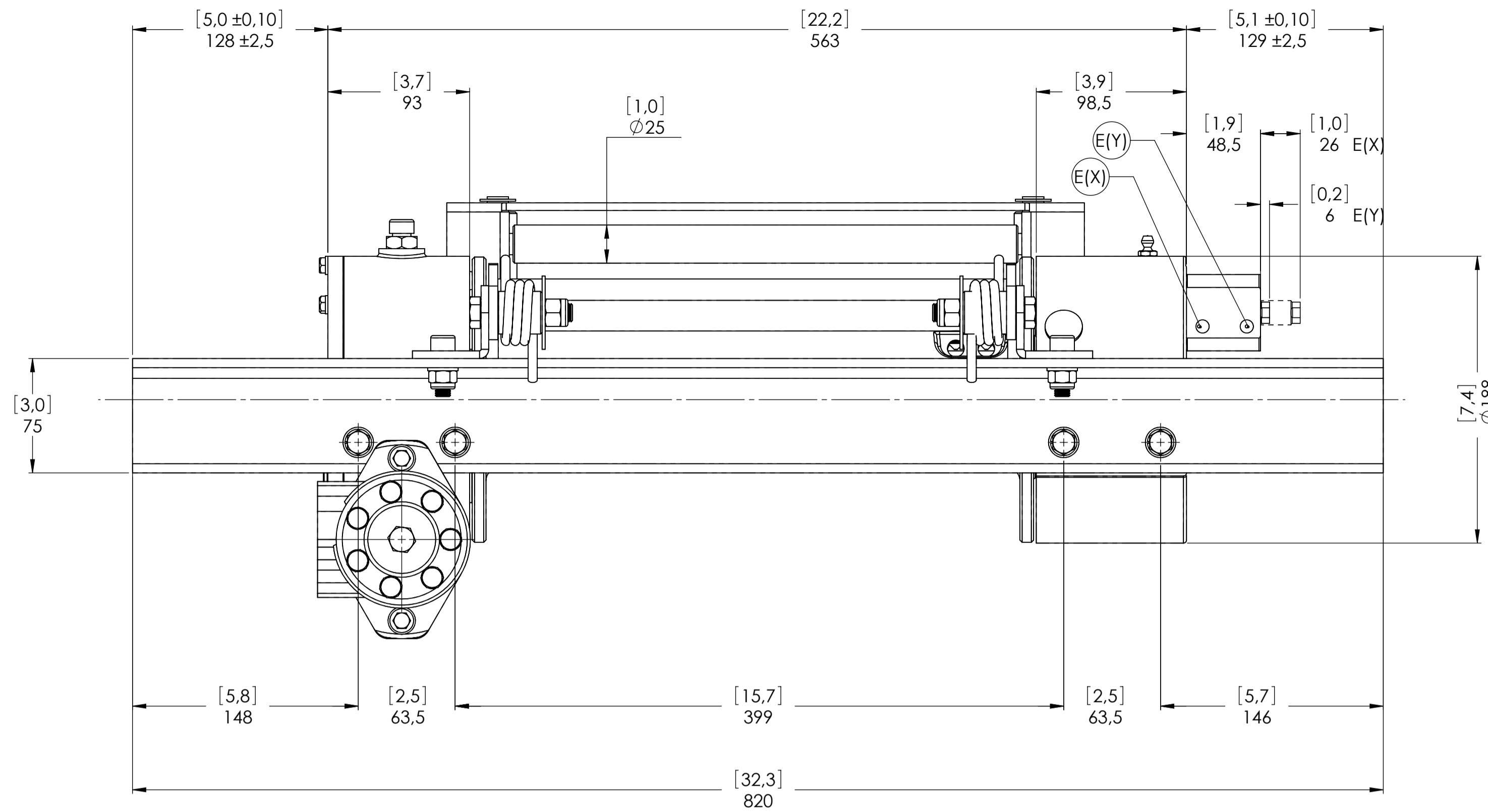



WINCH MODEL		JHL	WINCH GROUP	WORM GEAR	PLUGS
Pulling capacity (Kgs.)		2700	Date	Modification	1.Fill 3/8"G
Max.Oil flow		40 Lt./Min.			2.Level 3/8"G
Speed Line - first layer		4,9 Mt./Min.			3.Drain 3/8"G
Speed Line - top layer		8,1 Mt./Min.			
			DANGEROUS: Do not use winch to lift support or transport personnel.		SCALE 1:2,5
		Gear ratio	46:1		WEIGHTS
Funo - Bologna (Italy) www.vimeindustrial.com		Orbital hydr. motor	50 cc		Winch (without oil) 45 Kgs.
The Quality is Transparent		Working pressure	130 Bar		Roller fairlead 4,7 Kgs.
		Drum size	350 mm		Heavy-duty roller fairlead -----
		Drum clutch	Manual		Rope tensioner 2,5 Kgs.
		VIME Industrial : reserves the right to improve its products through changes in designed or materials as it may seem desiderable without notice			CODE JHL27D50GP
		DATA 09/11/2010			

CONNECTIONS	
A	1/2"G
B	1/2"G
E (X) DISENAGED	-----
E (Y) ENGAGED	-----



Machinery Directive 2006/42/CE
EN 14492-1



WINCH MODEL		JHL	WINCH GROUP	WORM GEAR	PLUGS
Pulling capacity (Kgs.)		2700	Date	Modification	1.Fill 3/8"G
Max.Oil flow		40 Lt./Min.			2.Level 3/8"G
Speed Line - first layer		4,9 Mt./Min.			3.Drain 3/8"G
Speed Line - top layer		8,1 Mt./Min.			
DANGEROUS: Do not use winch to lift support or transport personnel.					SCALE 1:2,5
					WEIGHTS
					Winch (without oil) 45 Kgs.
Funo - Bologna (Italy) www.vimeindustrial.com					Roller fairlead 4,7 Kgs.
The Quality is Transparent					Heavy-duty roller fairlead -----
Gear ratio 46:1 Orbital hydr. motor 50 cc Working pressure 130 Bar Drum size 350 mm Drum clutch Air-operated					Rope tensioner 2,5 Kgs.
VIME Industrial reserves the right to improve its products through changes in designed or materials as it may seem desiderable without notice.					CODE JHL27D50AGP
					DATE 9/11/2010

CONNECTIONS	
A	1/2"G
B	1/2"G
E (X) DISENAGED	1/8"G
E (Y) ENGAGED	1/8"G

1.4.11 JHL 2700 WINCH TECHNICAL DATA

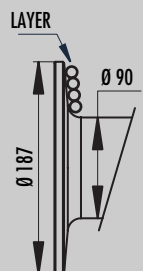
RATIO	WIRE ROPE SIZE [MM]	LAYER	LINE PULL [KGS]
46:1	8*	1	2.700
		2	2.320
		3	2.035
		4	1.815
		5	1.635
	10*	1	2.700
		2	2.250
		3	1.930
		4	1.690
		5	1.500

WIRE ROPE SIZE 8 MM	OIL SUPPLY	DRUM REVOLUTION [RPM]	LINE SPEED [MT/MIN]				
	[LT/MIN]		1	2	3	4	5
	20	6,6	2,0	2,4	2,7	3	3,4
	30	11,9	3,7	4,3	4,9	5,5	6,1
	40	15,9	4,9	5,7	6,5	7,3	8,1

WIRE ROPE SIZE 10 MM	OIL SUPPLY	DRUM REVOLUTION [RPM]	LINE SPEED [MT/MIN]				
	[LT/MIN]		1	2	3	4	5
	20	6,6	2,1	2,5	2,9	3,3	3,7
	30	11,9	3,8	4,5	5,3	6,0	6,8
	40	15,9	5,0	6,0	7,0	8,0	9,0


WIRE ROPE MIN. BREAKING LOAD EN 14492-1 [KGS]	5.400
---	-------

DRUM SIZE: JHL = 350 MM	LAYER	DRUM DIAMETER [MM]		WIRE ROPE ON LAYER [MT]		WIRE ROPE QUANTITY [MT]	
		8 MM	10 MM	8 MM	10 MM	8 MM	10 MM
		5	162	180	21,8	19,2	87,3
4	146	160	19,6	17,1	65,5	55,5	
3	130	140	17,5	15,0	45,9	38,5	
2	114	120	15,3	12,8	28,5	23,5	
1	98	100	13,2	10,7	13,2	10,7	
0	90	90	-	-	-	-	




WIRE ROPE CAPACITY [MT]		MAX. WIRE ROPE CAPACITY EN 14492-1 [MT]		MAX. WIRE ROPE CAPACITY [MT]	
8 MM	10 MM	8 MM	10 MM	8 MM	10 MM
50	40	87**	55**	109	74

DESCRIPTION	WEIGHT
	[KGS]
WINCH (WITHOUT CABLE)	45
ACCESSORY : ROLLERFAILREAD	4,7
ACCESSORY : CABLE TENSIONER	2,5

NOTES 

Specifications are subject to change without notification and without incurring obligation. Specifications in this publication are theoretical and may vary depending on hydraulic system, environment, etc.

NOTES 

*Wire rope size must be respected. Recommended wire rope min. tensile strength 2160 N/mm².
Wire rope minimum breaking load must be at least double of winch max. pulling capacity.

** Max. wire rope capacity according with EN 14492-1.

1.4.12 JHL 2700 WINCH PERFORMANCE CHARTS AT THE 1ST LAYER

