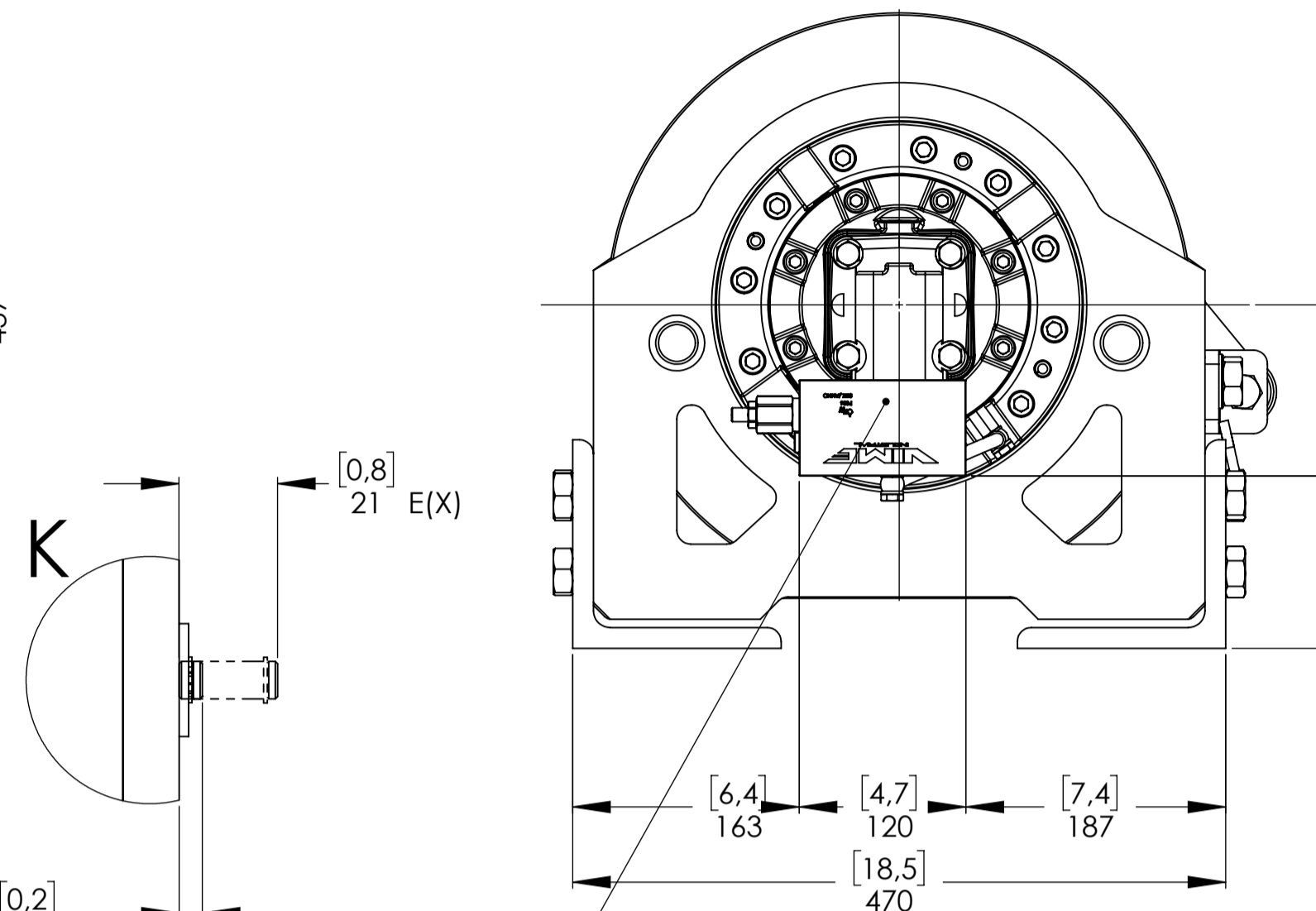
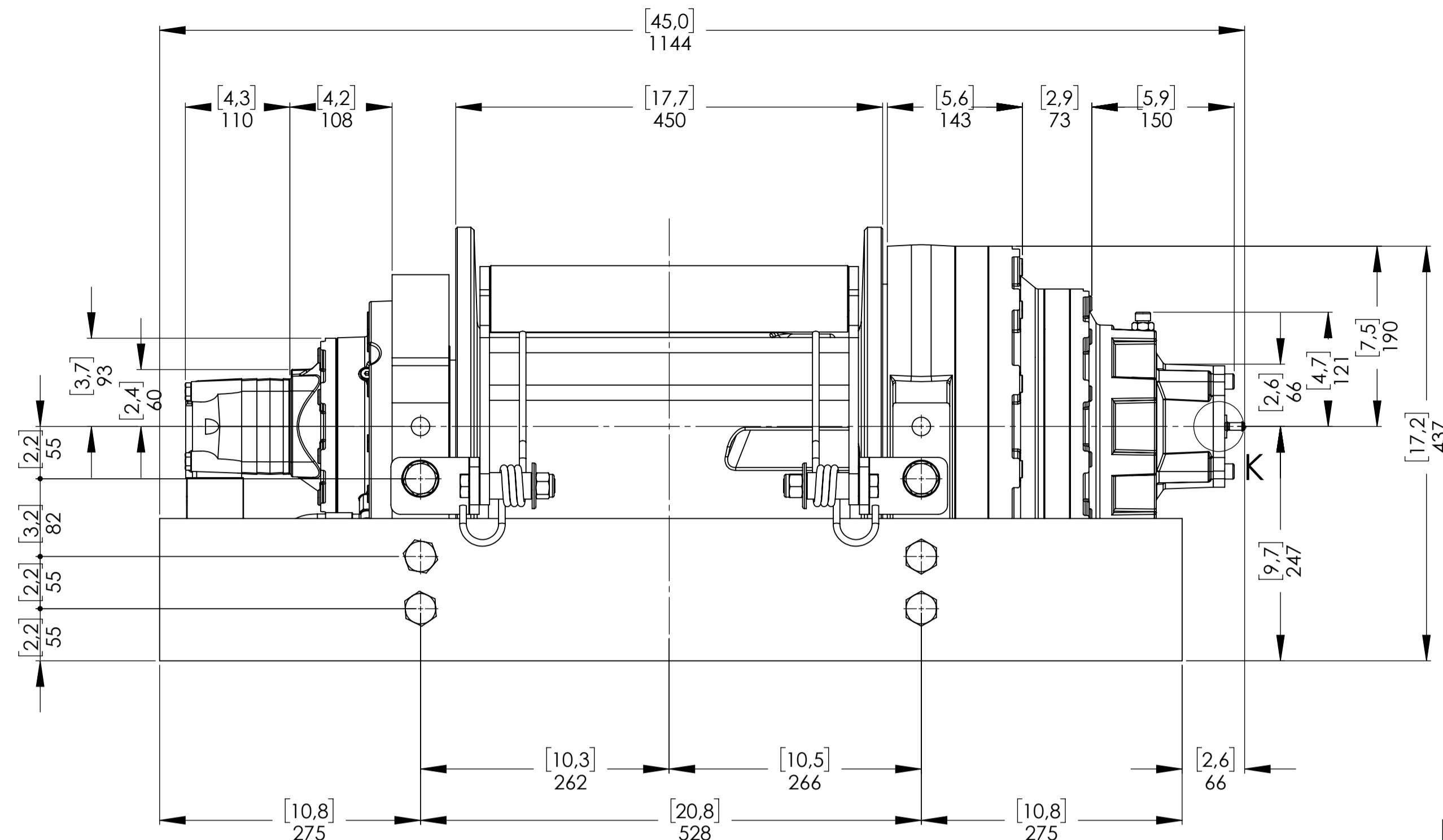
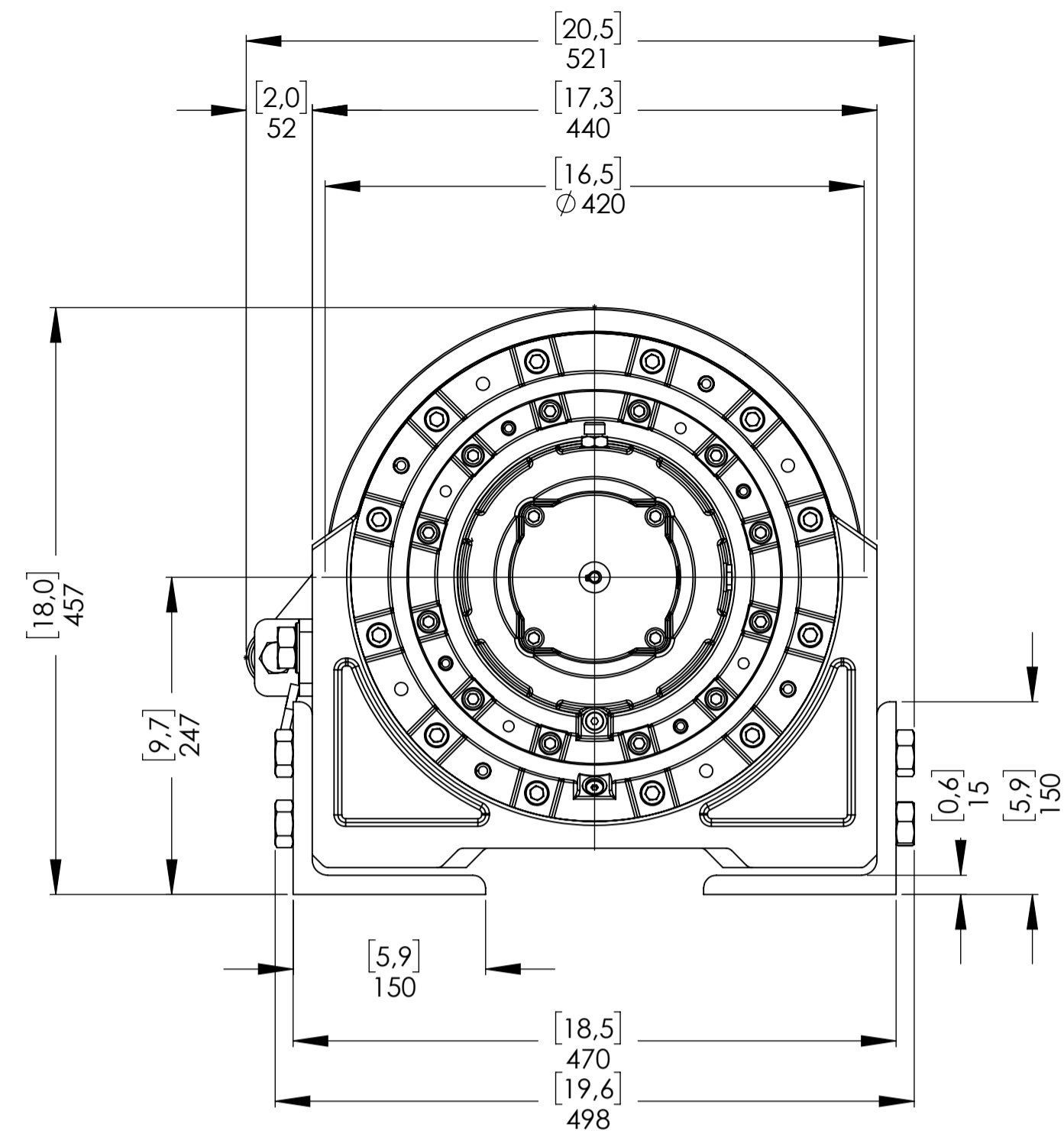
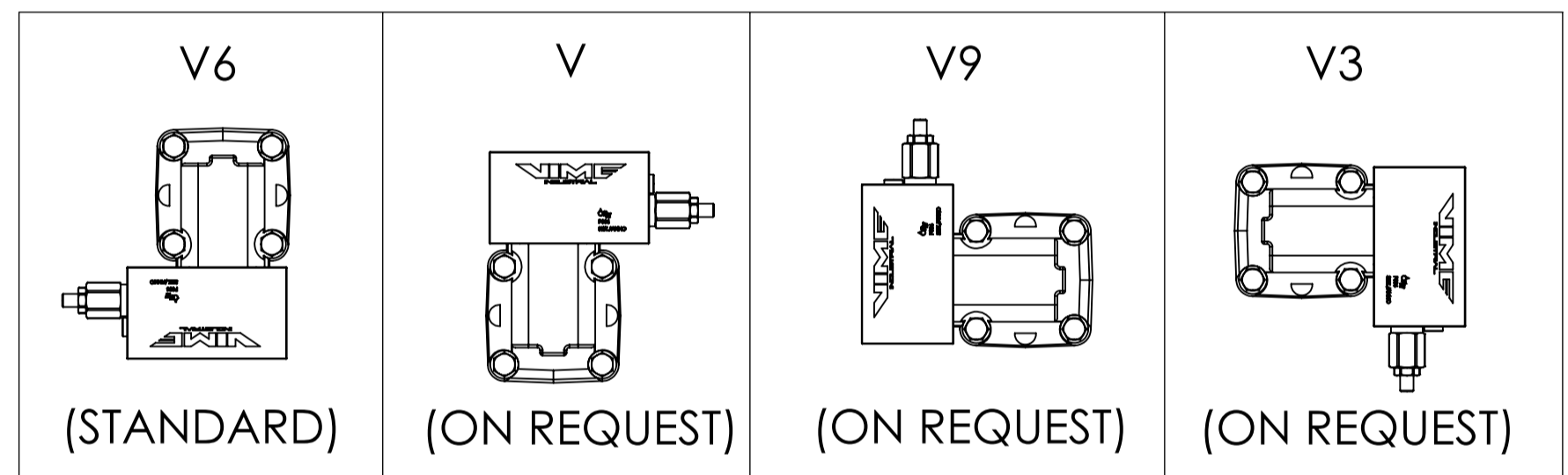


Machinery Directive 2006/42/CE
EN 14492-1



OVERCENTER VALVE POSITION*

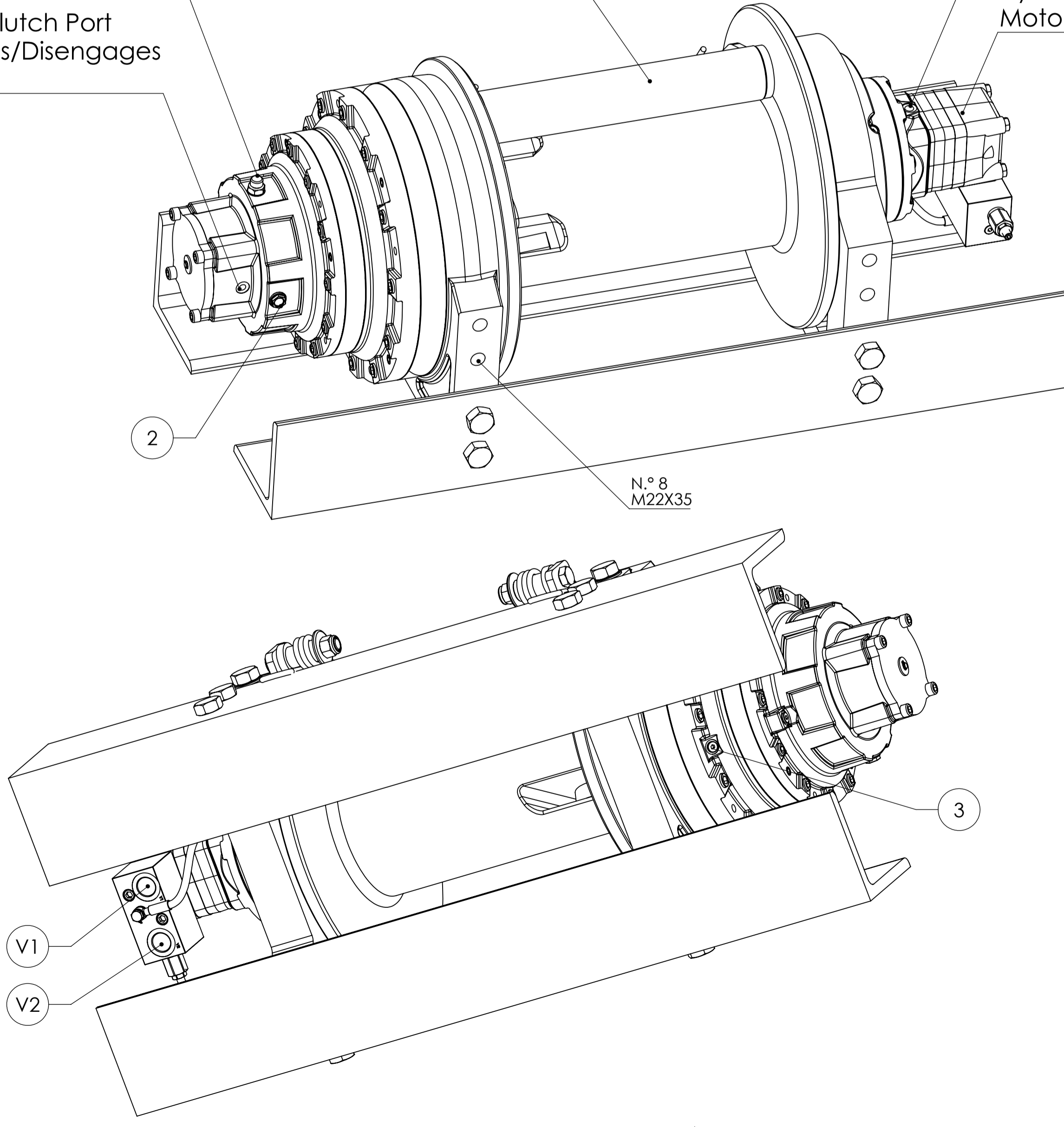
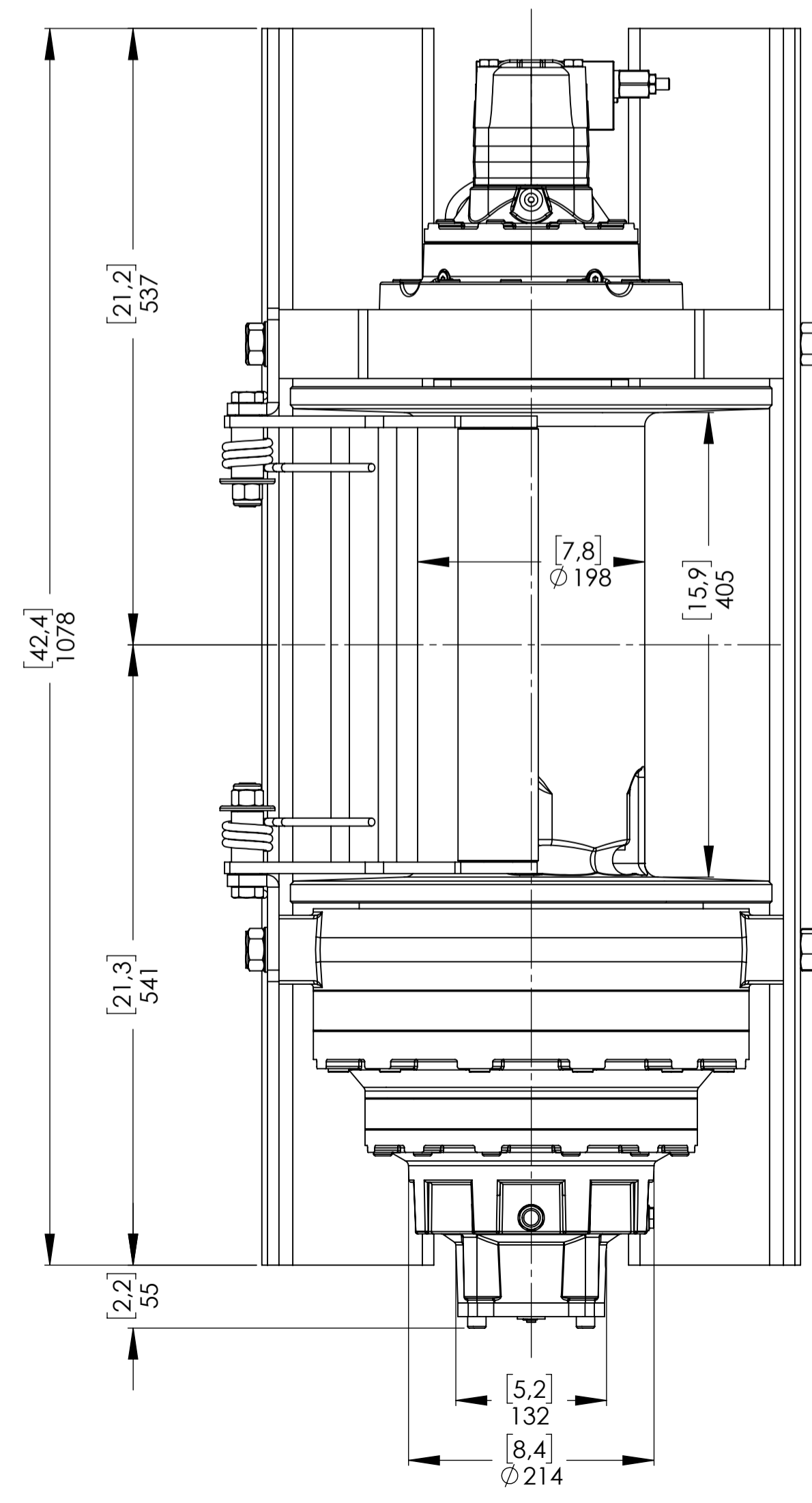


WINCH ORDERING CODE	AIR CLUTCH (STANDARD)	MANUAL CLUTCH (ON REQUEST)	HEAVY DUTY ROLLER FAIRLEAD (ON REQUEST)	CABLE TENSIONER (ON REQUEST)	OVER CENTER VALVE POSITION* (STANDARD V6)
EPHLFN200U10EAV6	X				X
EPHLFN200U10EAPV6	X			X	X
EPHLFN200U10EAGV6	X		X		X
EPHLFN200U10EAGPV6	X		X	X	X
EPHLFN200U10EV6		X			X
EPHLFN200U10EPV6		X		X	X
EPHLFN200U10EGV6		X	X		X
EPHLFN200U10EGPV6		X	X	X	X

E - Air Clutch Port Engages/Disengages Drum

Cable Tensioner

Hydraulic Motor



*AT THE MOMENT OF ORDER IS POSSIBLE REQUEST THE OVERCENTER VALVE PORTS ORIENTED ACCORDING TO THE LAYOUT ABOVE. IF NOT SPECIFIED, THE WINCH WILL BE SUPPLIED WITH THE OVERCENTER VALVE PORTS ORIENTED AS PER OUR STANDARD CONFIGURATION V6.

CONNECTIONS

V1 OUT LET	G 3/4
V2 IN LET	G 3/4
C CASE DRAIN	G 1/4
E (X) DISENGAGED	G 1/8
E (Y) ENGAGED	RETURN SPRING

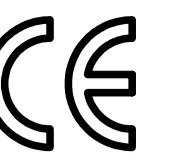
WINCH MODEL	EPHL 200 FN	WINCH GROUP	PLANETARY GEAR	PLUGS
Pulling capacity	20000 Kg	Date	Modification	1.Fill G 3/8
Max.Oil flow	75 Lt./Min.			2.Level G 3/8
Speed Line - first layer	5,1 Mt./Min.			3.Drain G 1/4
Speed Line - top layer	8,2 Mt./Min.	DANGEROUS: Do not use winch to lift support or transport personnel.		SCALE 1:4.5
				WEIGHTS
				Winch (without oil) 410 Kg
				Heavy-duty Roller fairlead -----
				Cable tensioner 10 Kg
				COD. EPHLFN200U10EAPV6



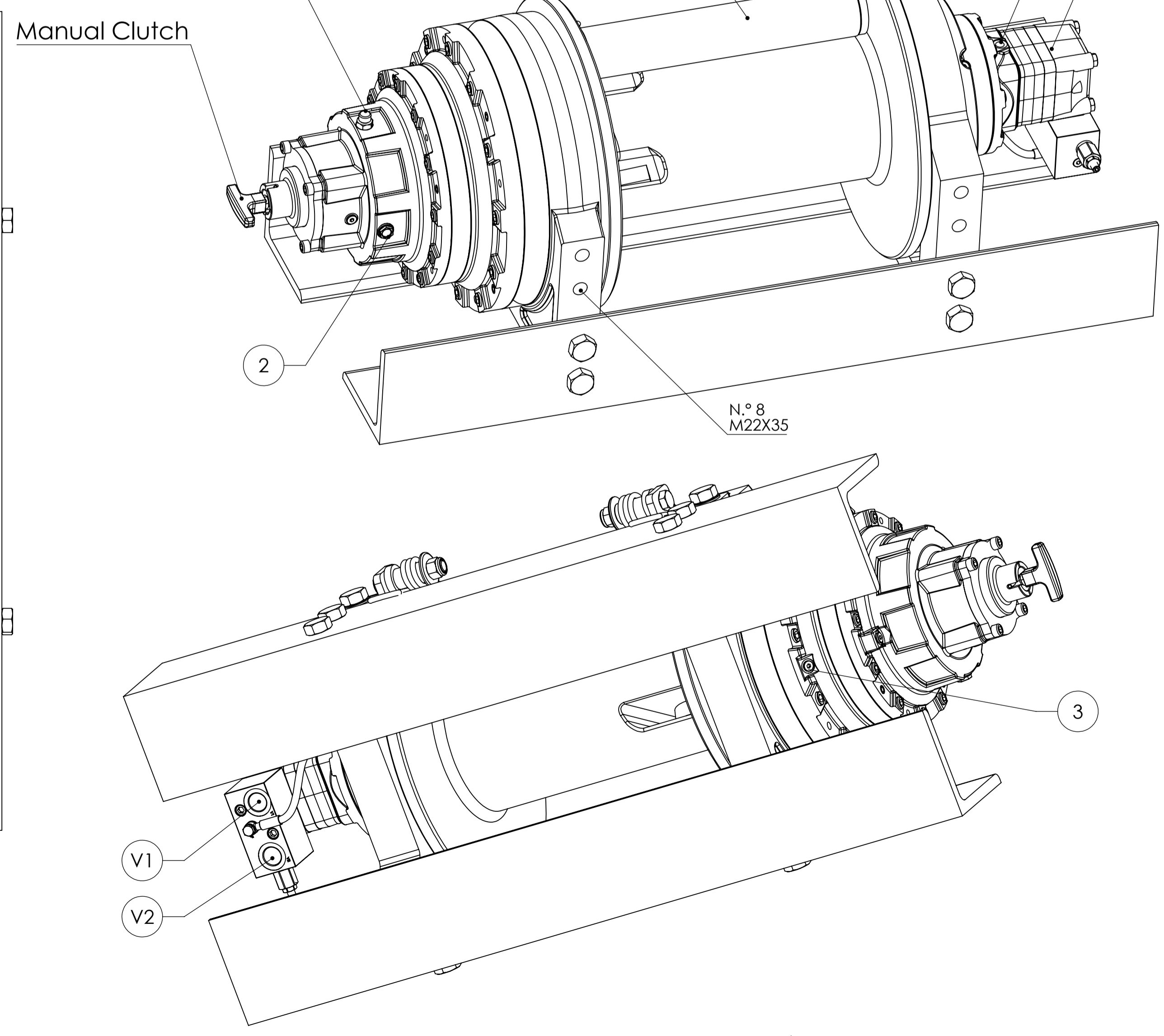
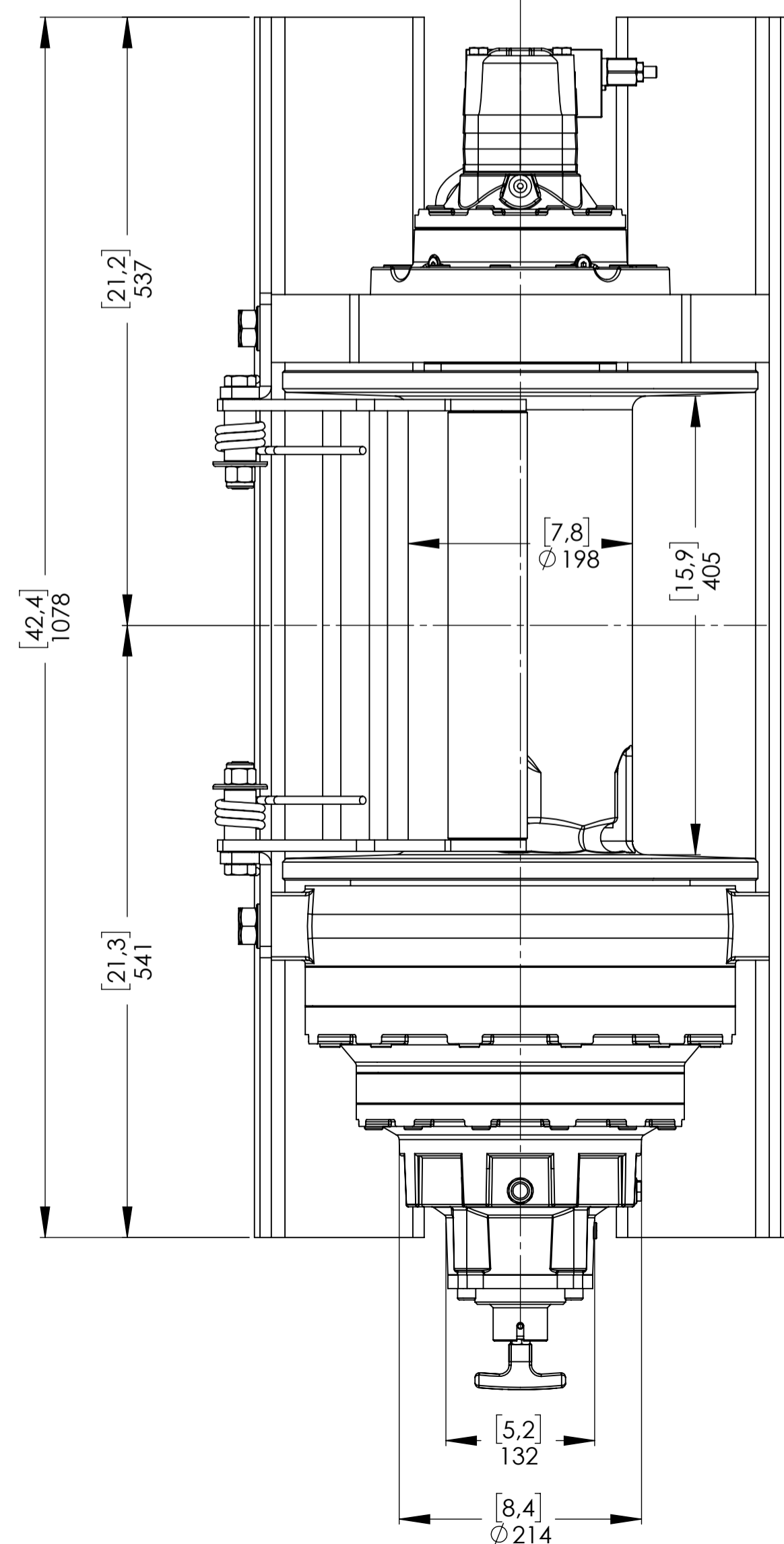
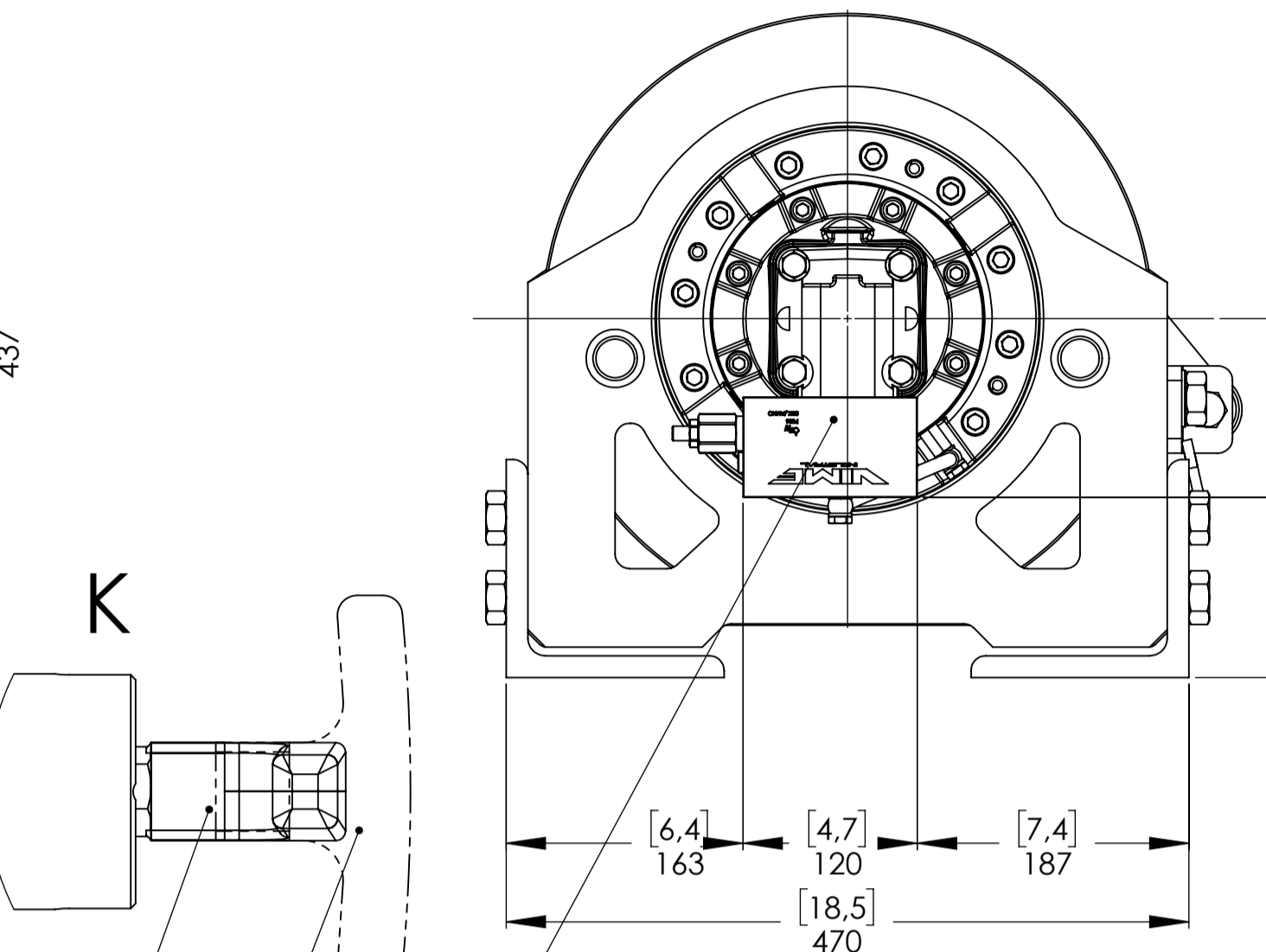
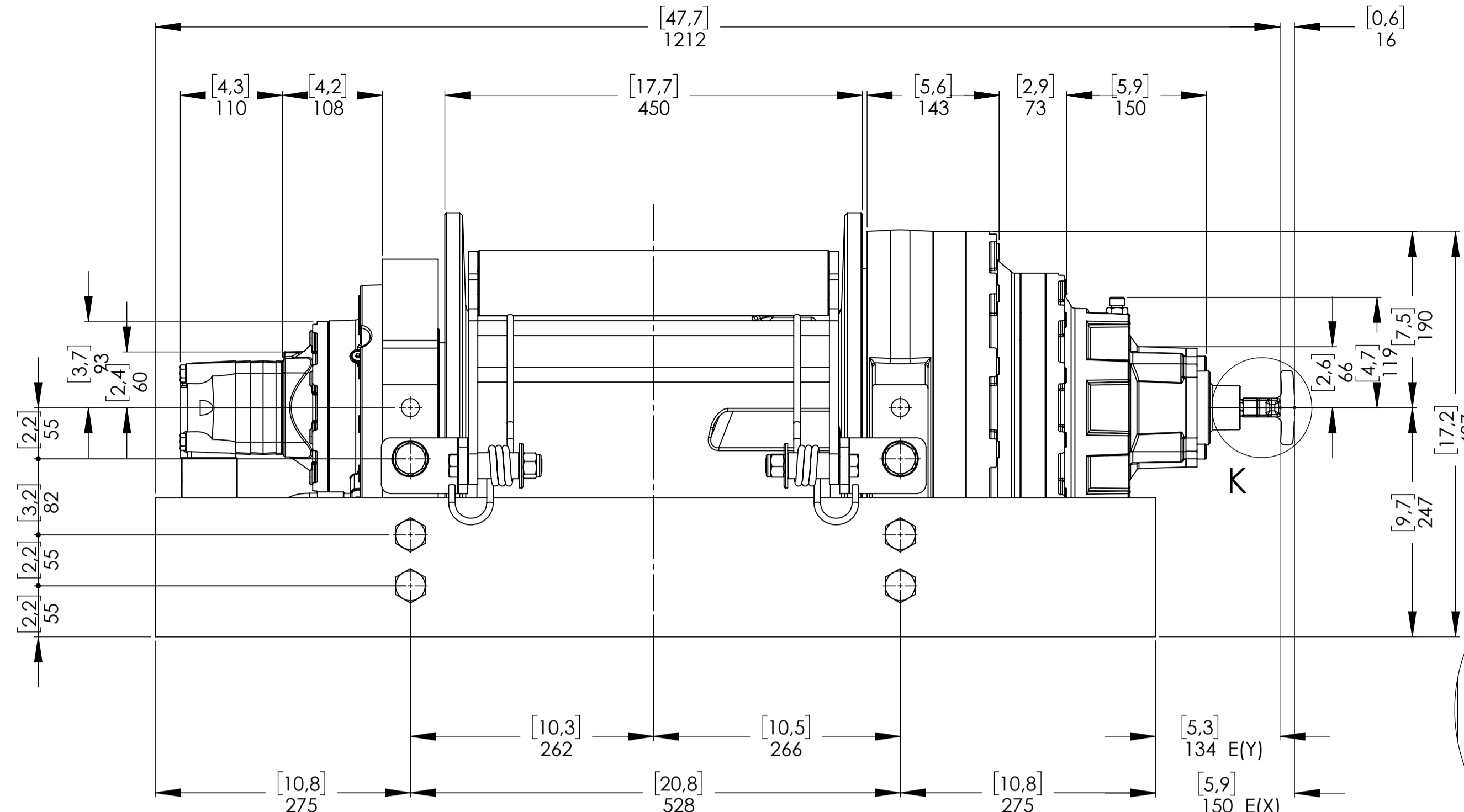
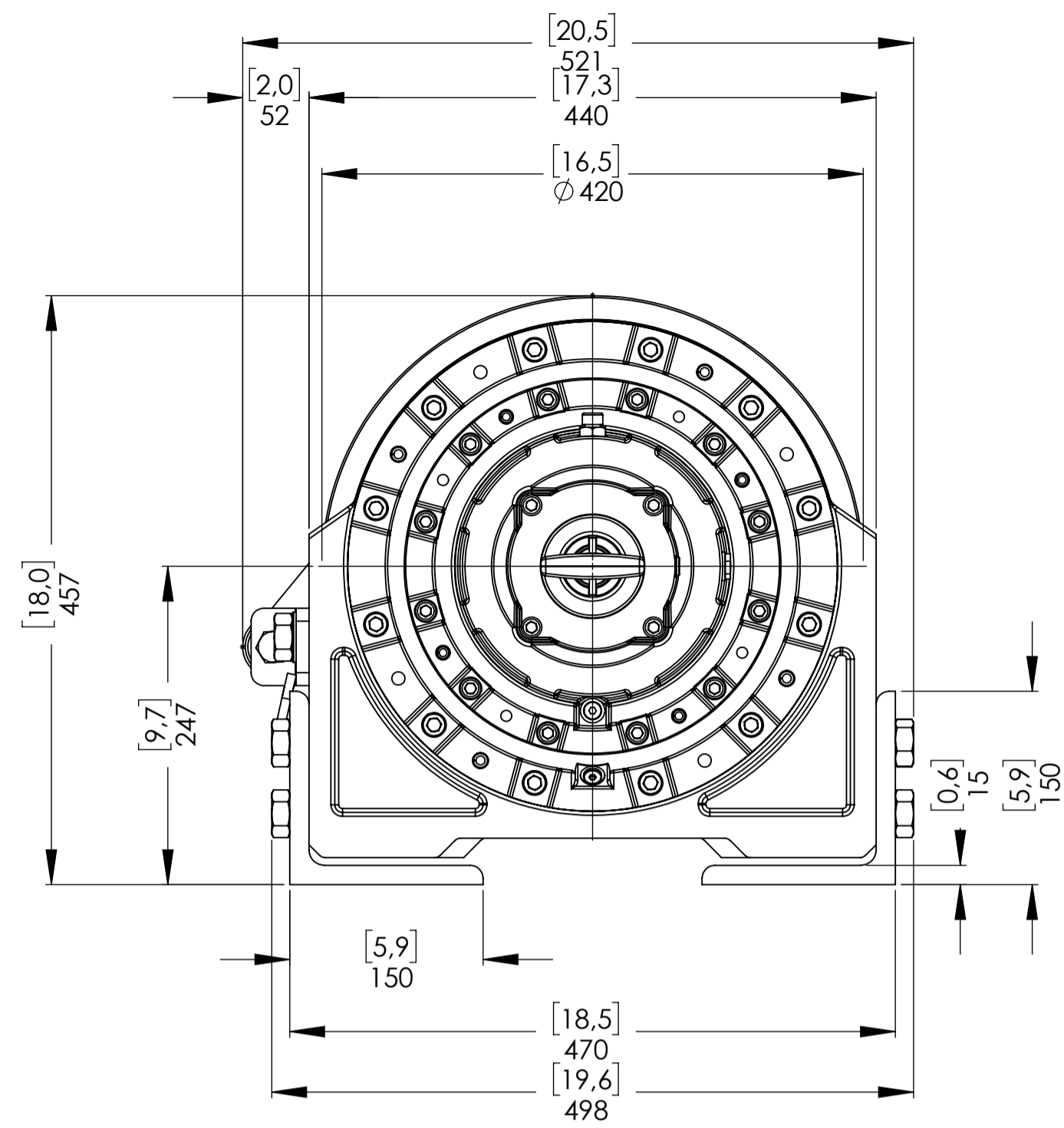
Funo - Bologna (Italy)
www.vimeindustrial.com

The Quality is Transparent

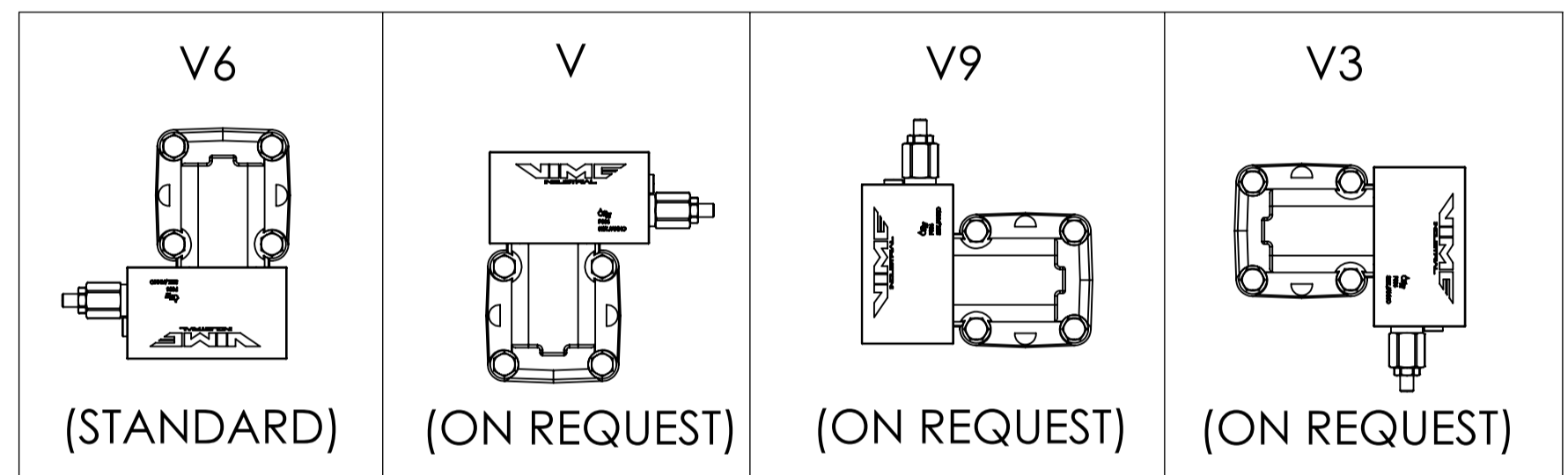
Gear ratio	1/97,23
Orbital hydr. motor	100 cc
Working pressure	210 bar
Drum size	405 mm
Drum clutch	Air-operated
VIME Industrial : reserves the right to improve its products through changes in designed or materials as if may seem desirable without notice	
DATA 21/03/2018	



Machinery Directive 2006/42/CE
EN 14492-1



OVERCENTER VALVE POSITION*



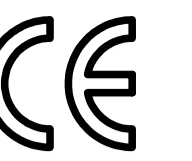
WINCH ORDERING CODE	AIR CLUTCH (STANDARD)	MANUAL CLUTCH (ON REQUEST)	HEAVY DUTY ROLLER FAIRLEAD (ON REQUEST)	CABLE TENSIONER (ON REQUEST)	OVER CENTER VALVE POSITION* (STANDARD V6)
EPHLFN200U10EAV6	X				X
EPHLFN200U10EAPV6	X			X	X
EPHLFN200U10EAGV6	X		X		X
EPHLFN200U10EAGPV6	X		X	X	X
EPHLFN200U10EV6		X			X
EPHLFN200U10EPV6		X		X	X
EPHLFN200U10EGV6		X	X		X
EPHLFN200U10EGPV6		X	X	X	X

*AT THE MOMENT OF ORDER IS POSSIBLE REQUEST THE OVERCENTER VALVE PORTS ORIENTED ACCORDING TO THE LAYOUT ABOVE. IF NOT SPECIFIED, THE WINCH WILL BE SUPPLIED WITH THE OVERCENTER VALVE PORTS ORIENTED AS PER OUR STANDARD CONFIGURATION V6.

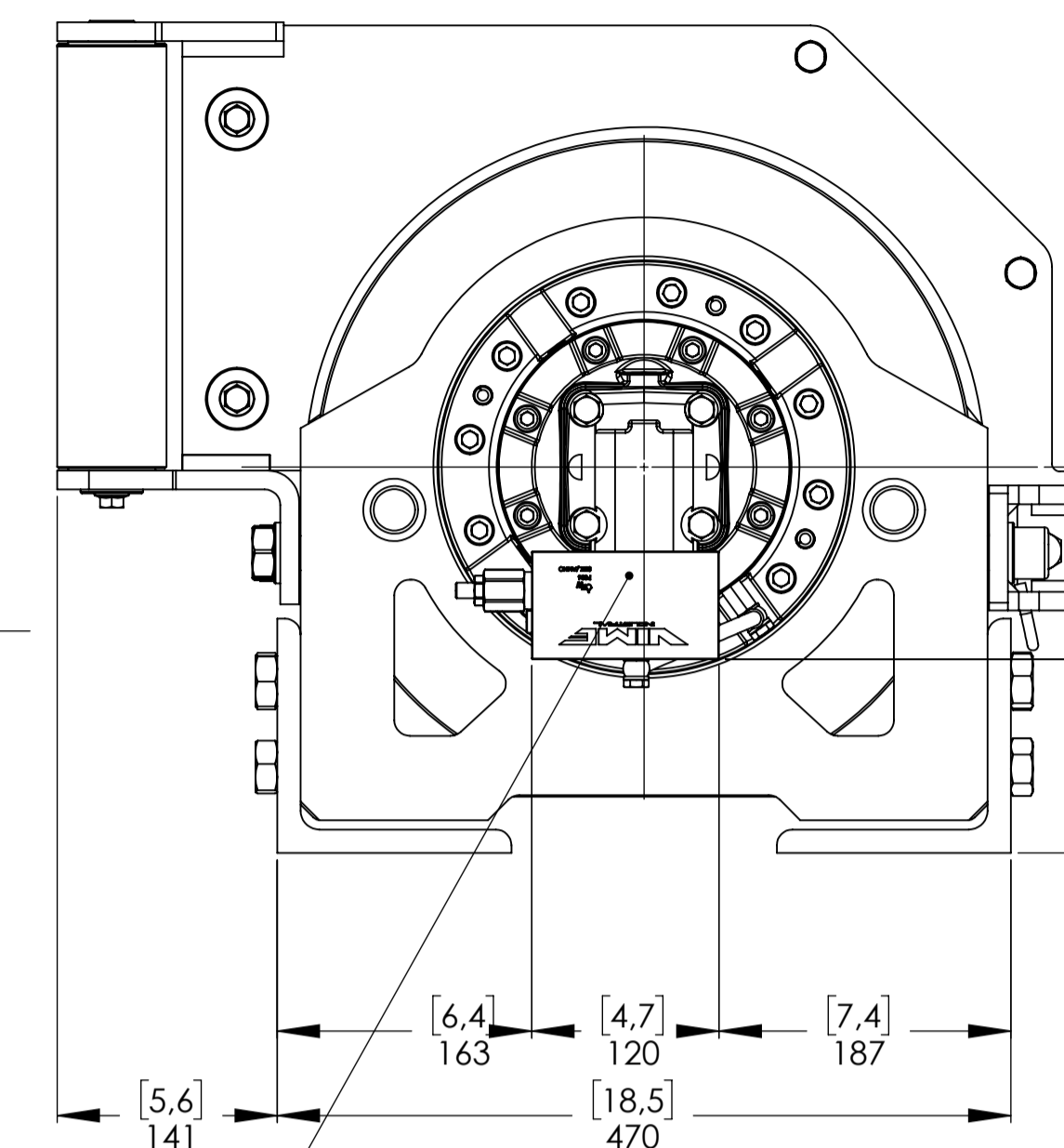
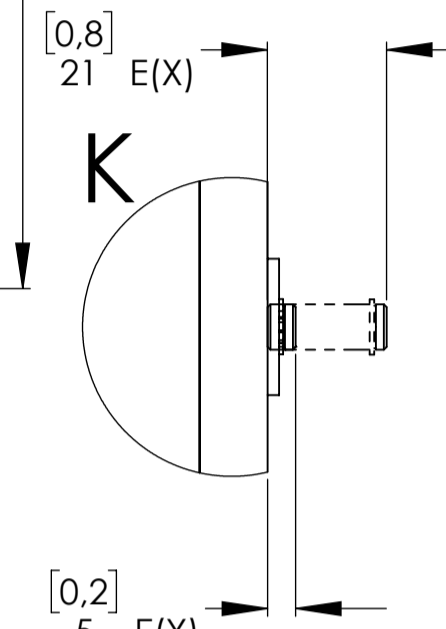
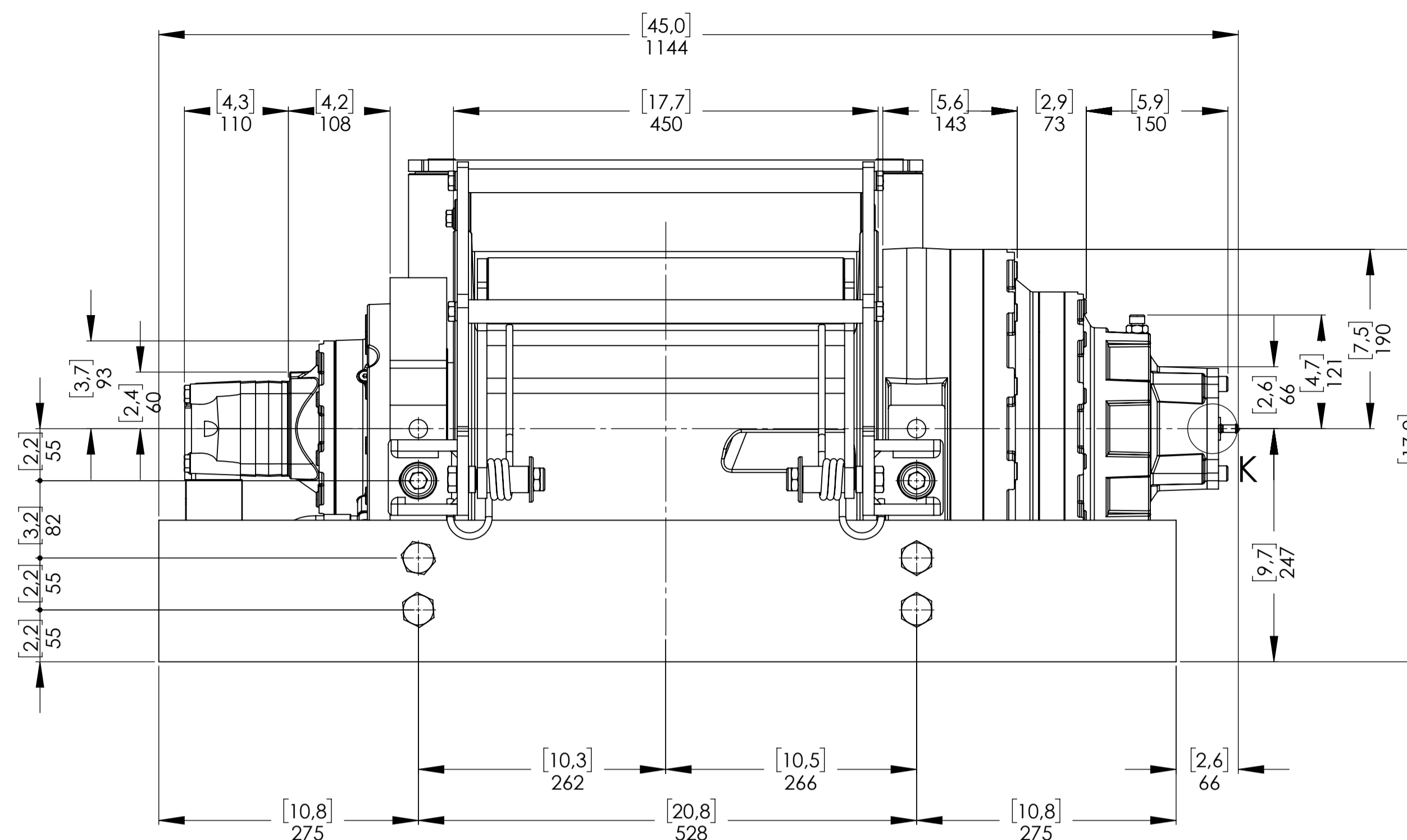
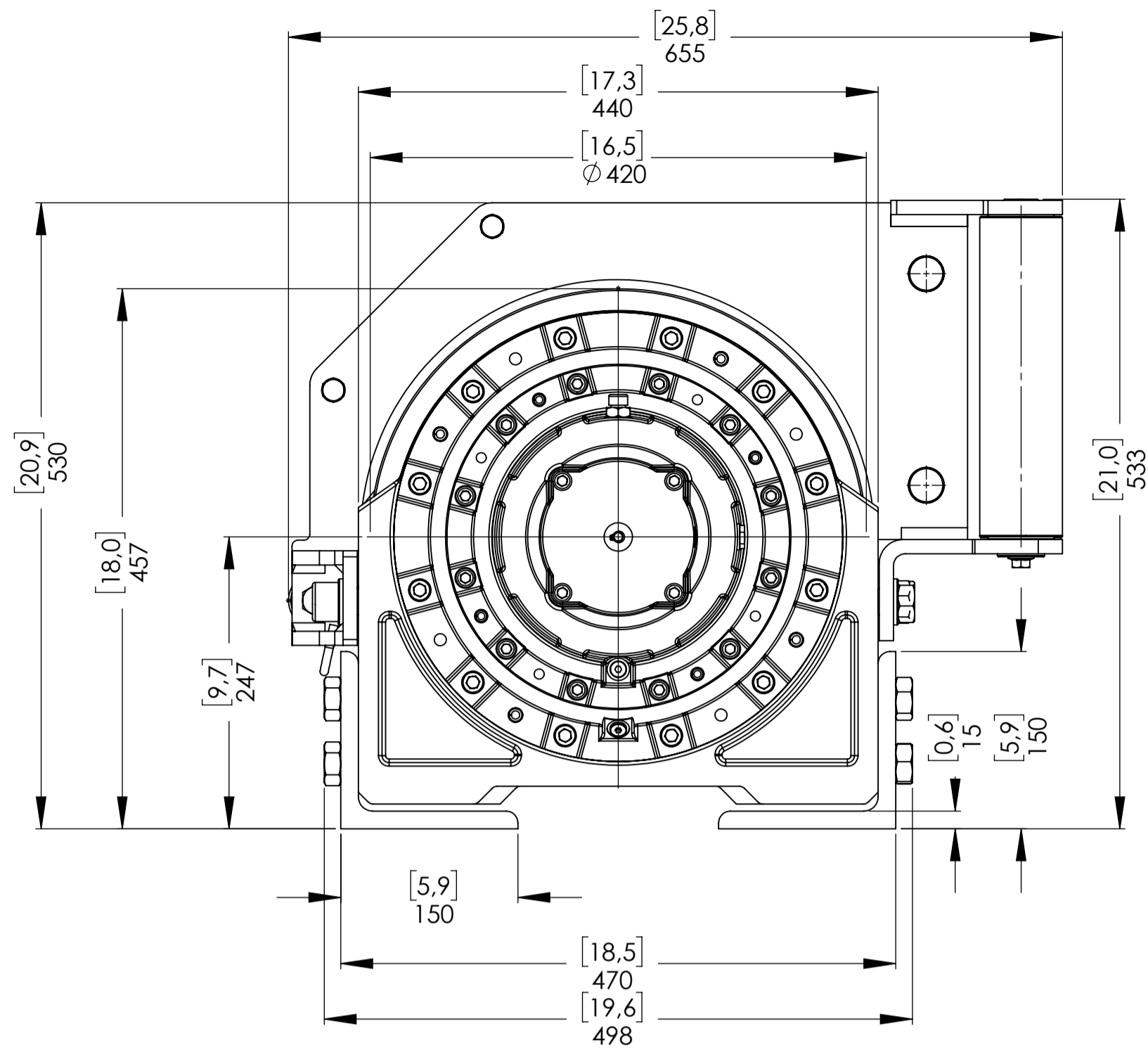
CONNECTIONS

V1 OUT LET	G 3/4
V2 IN LET	G 3/4
C CASE DRAIN	G 1/4
E (X) DISENGAGED	-----
E (Y) ENGAGED	-----

WINCH MODEL	EPHL 200 FN	WINCH GROUP	PLANETARY GEAR	PLUGS
Pulling capacity	20000 Kg	Date	Modification	1.Fill G 3/8
Max.Oil flow	75 Lt./Min.			2.Level G 3/8
Speed Line - first layer	5,1 Mt./Min.			3.Drain G 1/4
Speed Line - top layer	8,2 Mt./Min.	DANGEROUS: Do not use winch to lift support or transport personnel.		SCALE 1:4.5
		Gear ratio	1/97,23	WEIGHTS
		Orbital hydr. motor	100 cc	Winch (without oil) 410 Kg
		Working pressure	210 bar	Heavy-duty
		Drum size	405 mm	Roller fairlead -----
		Drum clutch	Manual	Cable tensioner 10 Kg
 Funo - Bologna (Italy) www.vimeindustrial.com The Quality is Transparent		VIME Industrial reserves the right to improve its products through changes in designed or materials as if may seem desiderable without notice.		DATA 21/03/2018 COD. EPHLFN200U10EPV6

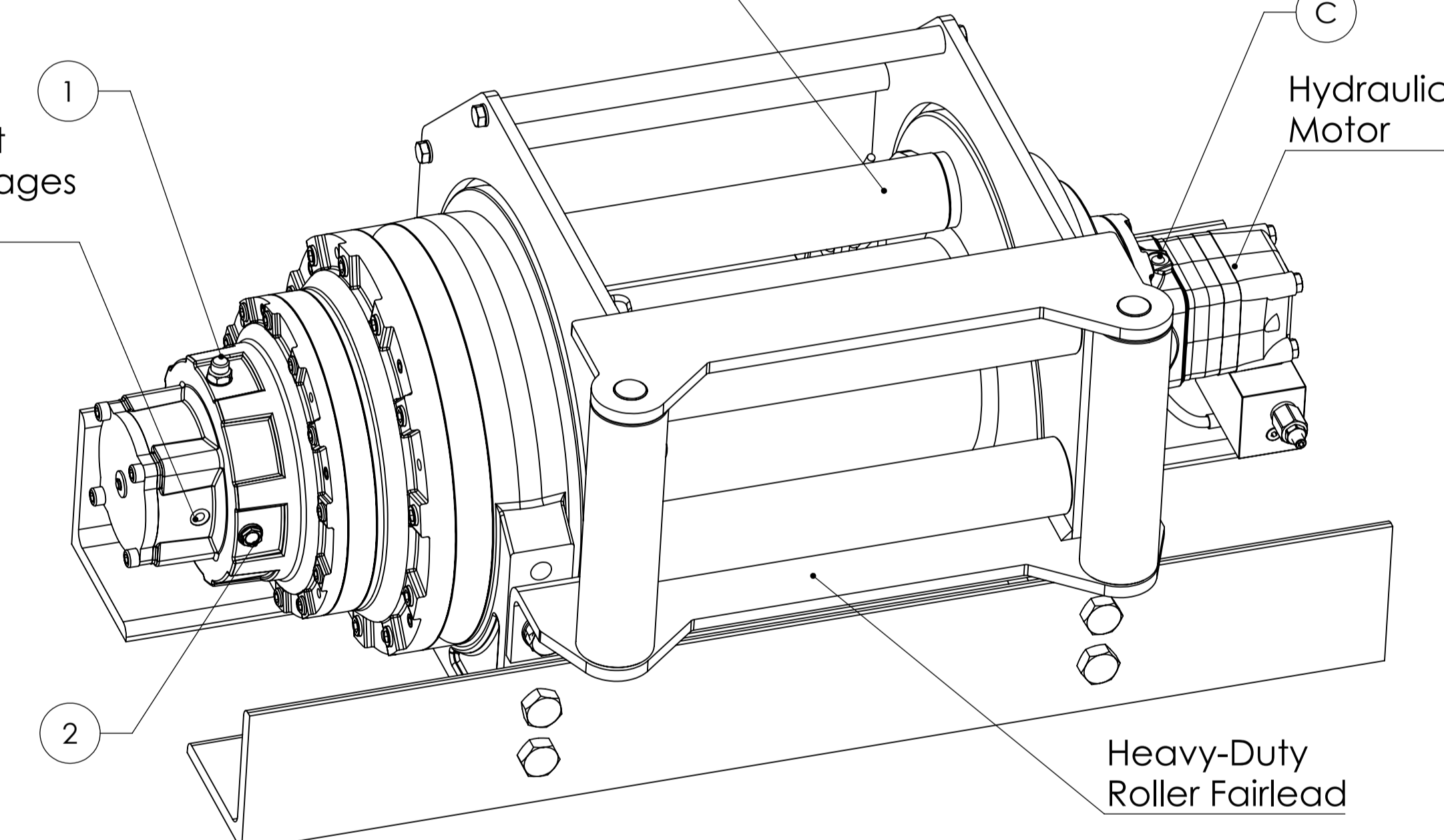


Machinery Directive 2006/42/CE
EN 14492-1

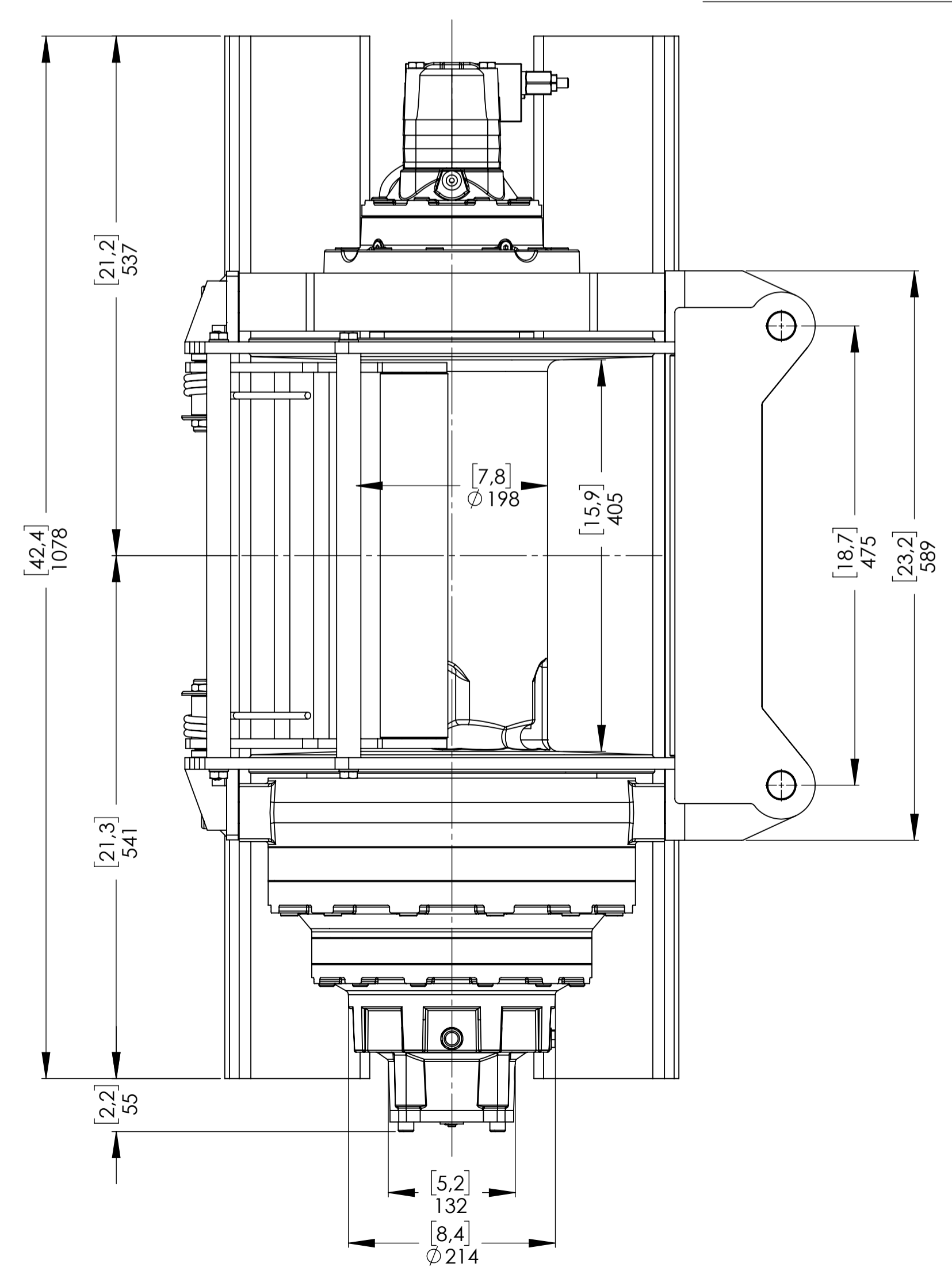
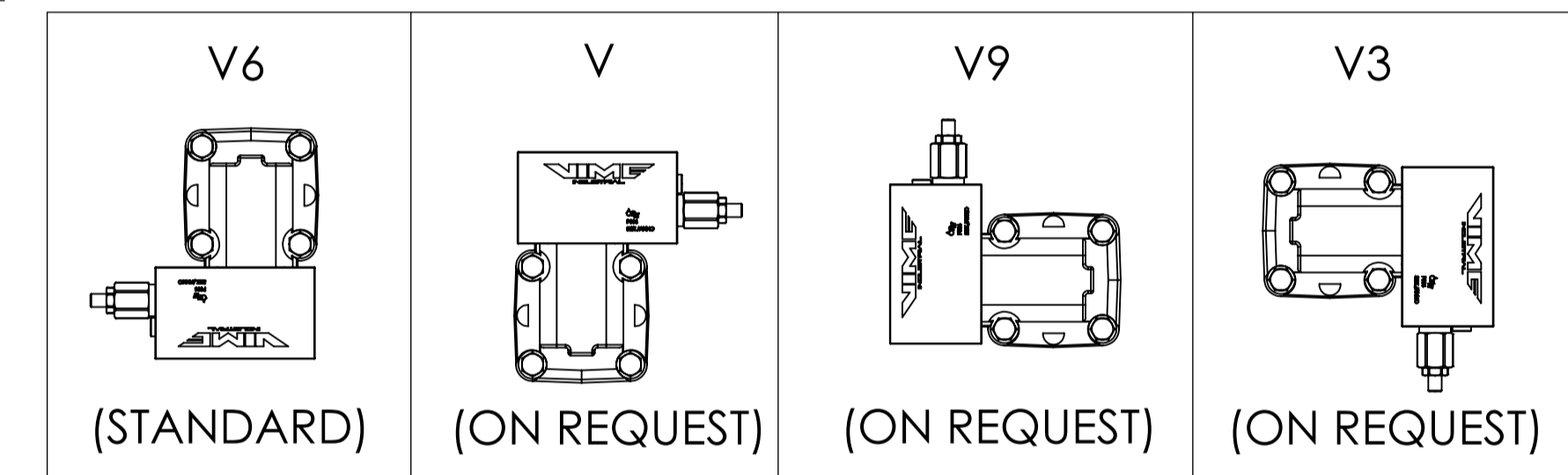


Cable Tensioner

E - Air Clutch Port Engages/Disengages Drum



OVERCENTER VALVE POSITION*

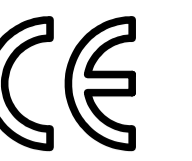


WINCH ORDERING CODE	AIR CLUTCH (STANDARD)	MANUAL CLUTCH (ON REQUEST)	HEAVY DUTY ROLLER FAIRLEAD (ON REQUEST)	CABLE TENSIONER (ON REQUEST)	OVER CENTER VALVE POSITION* (STANDARD V6)
EPHLFN200U10EAV6	X				X
EPHLFN200U10EAPV6	X			X	X
EPHLFN200U10EAGV6	X		X		X
EPHLFN200U10EAGPV6	X		X	X	X
EPHLFN200U10EV6		X			X
EPHLFN200U10EPV6		X		X	X
EPHLFN200U10EGV6		X	X		X
EPHLFN200U10EGPV6		X	X	X	X

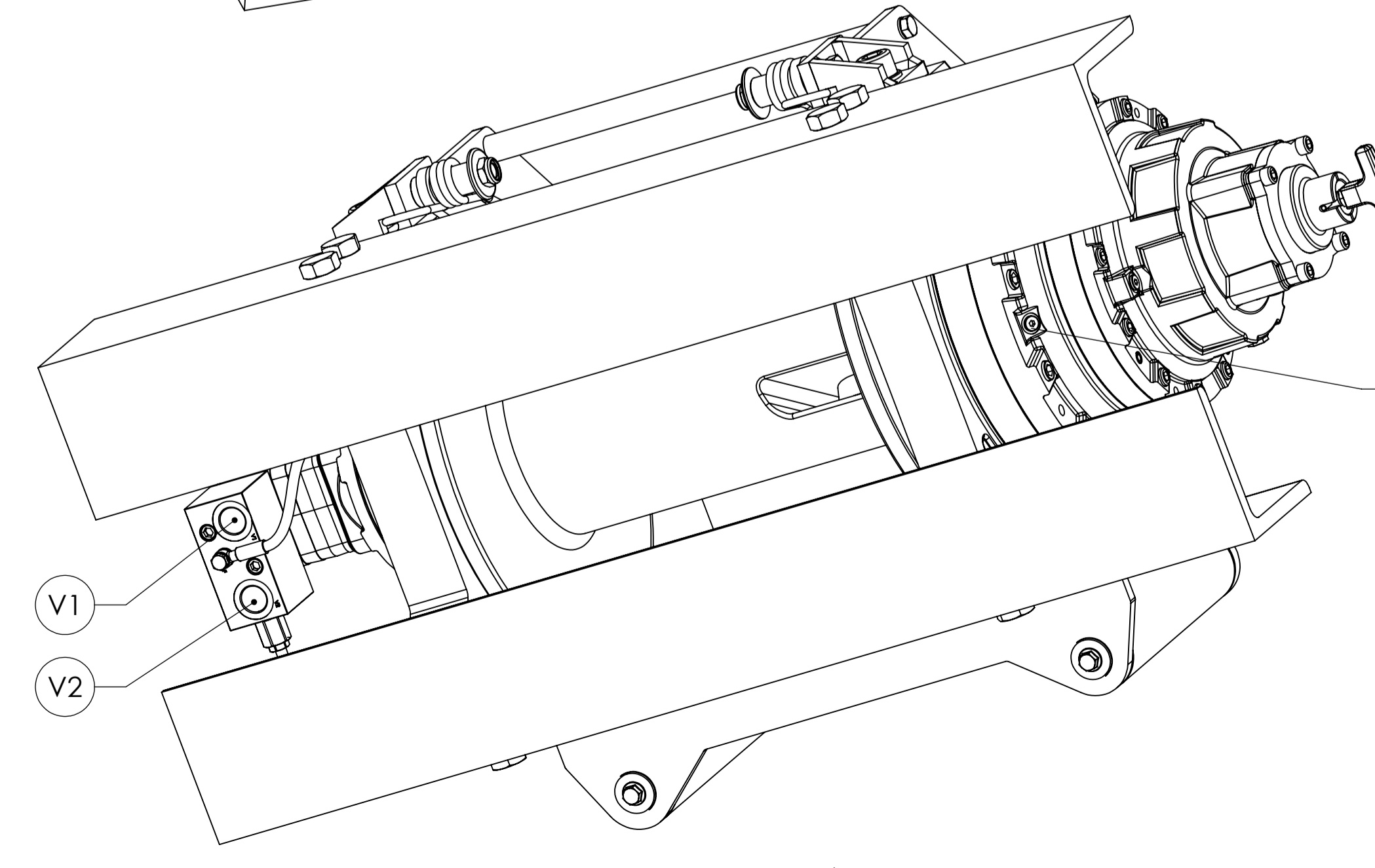
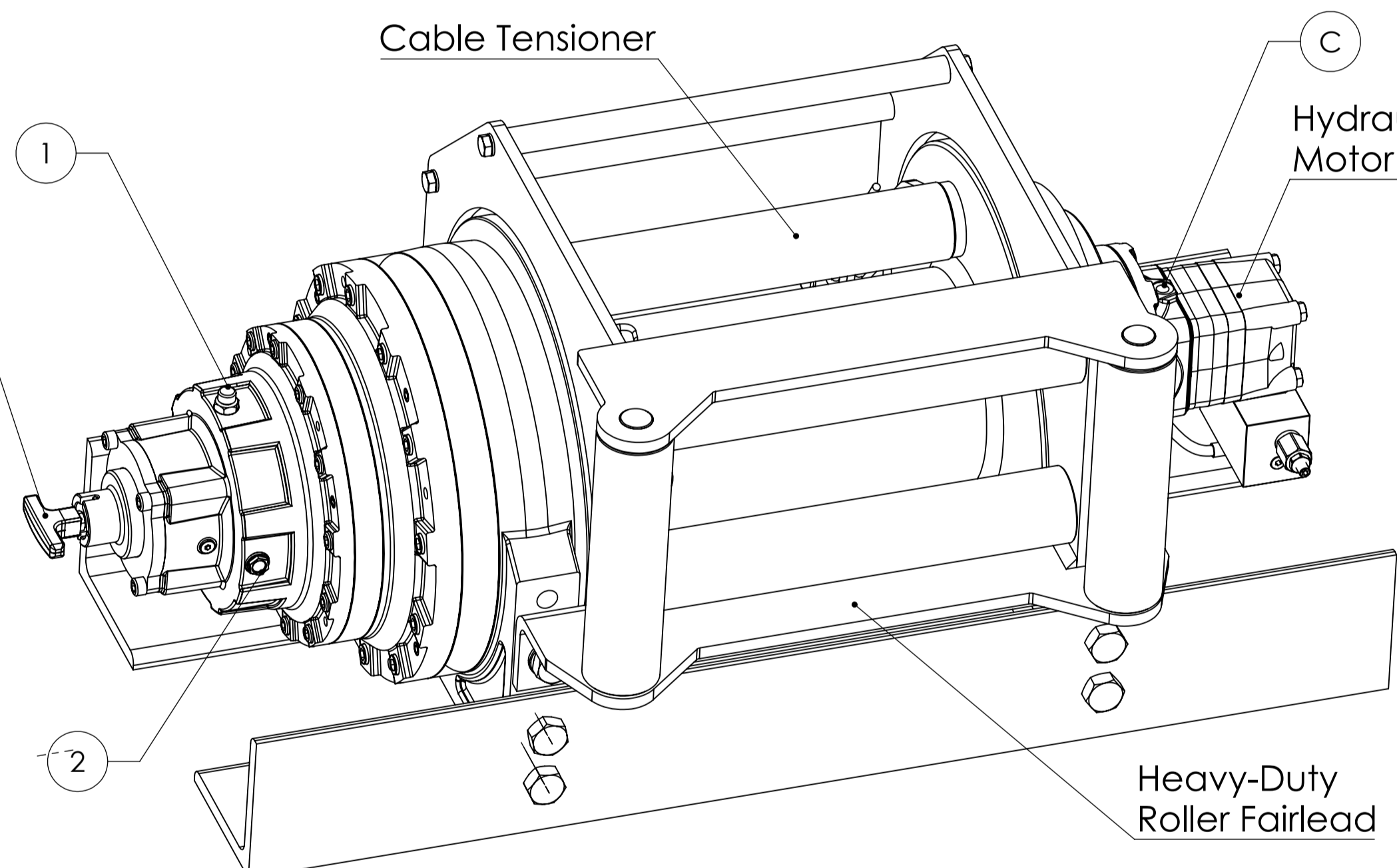
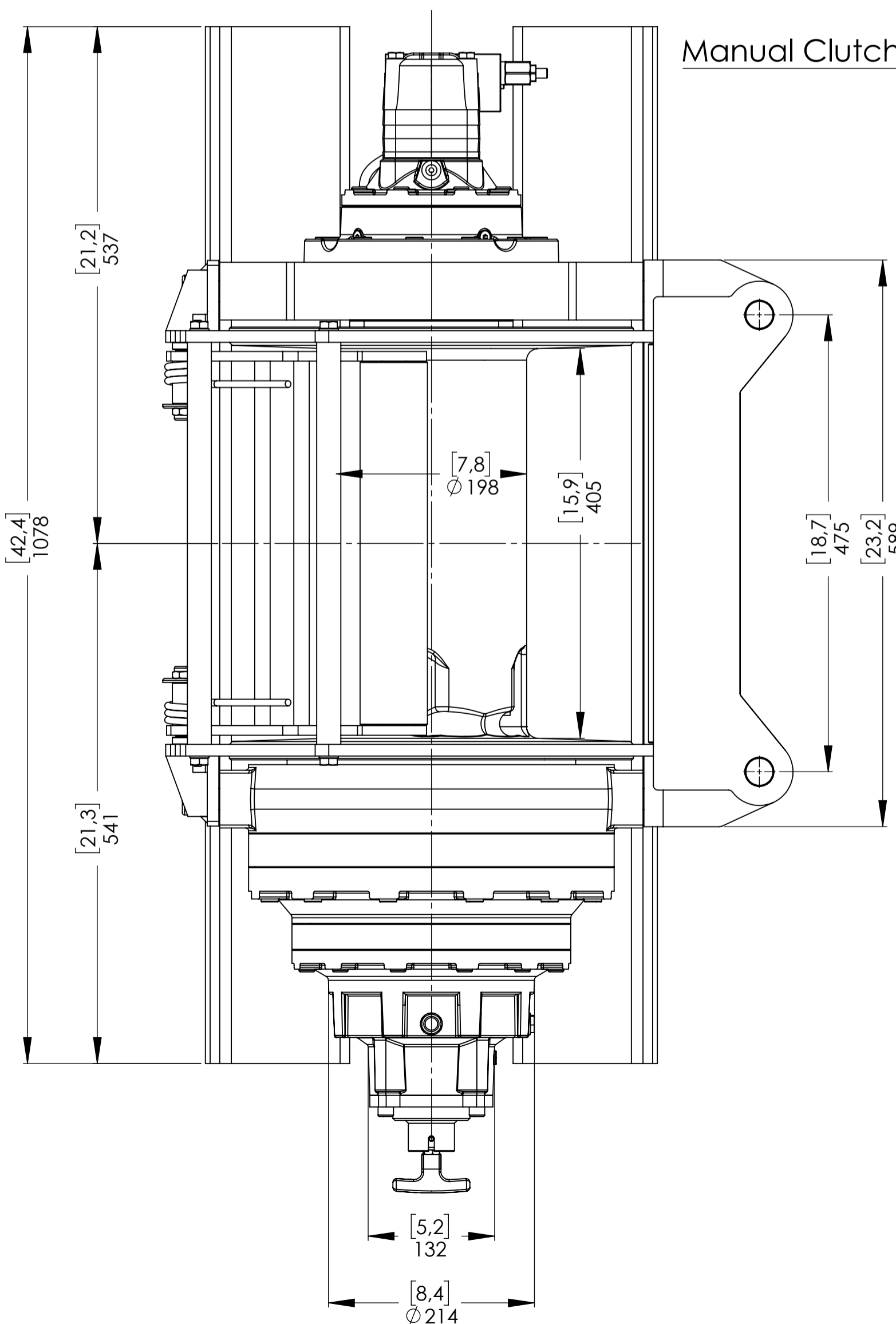
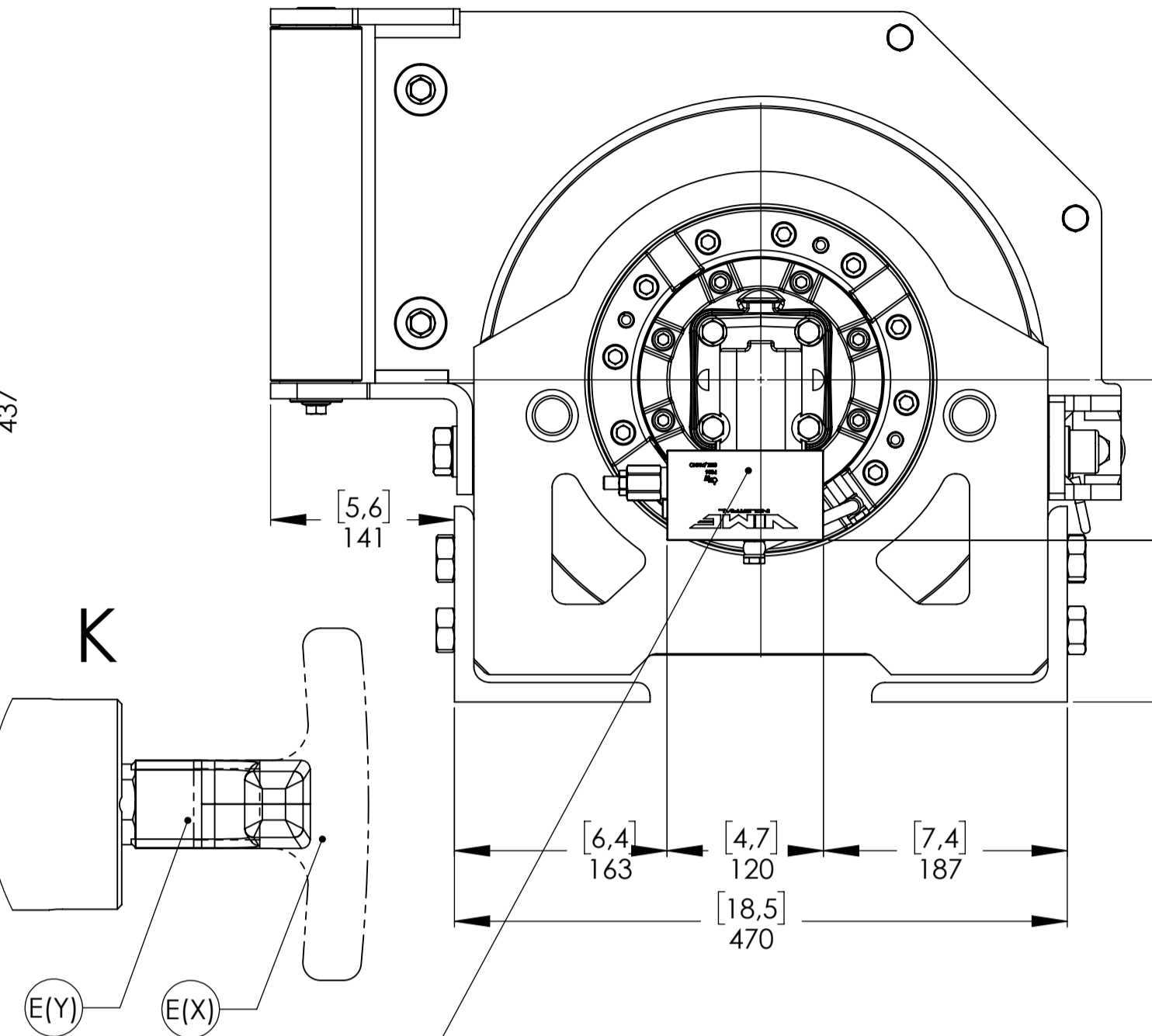
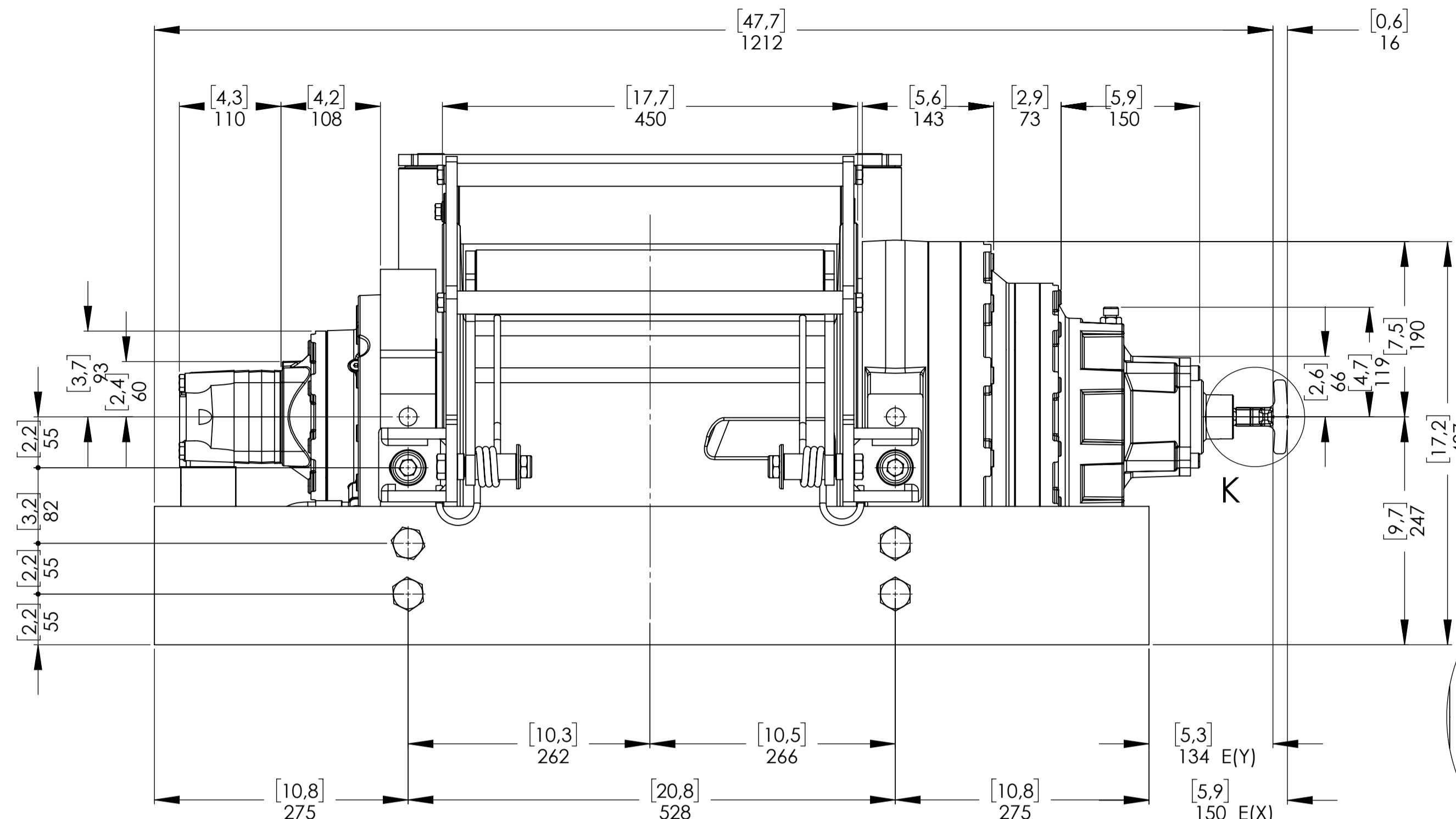
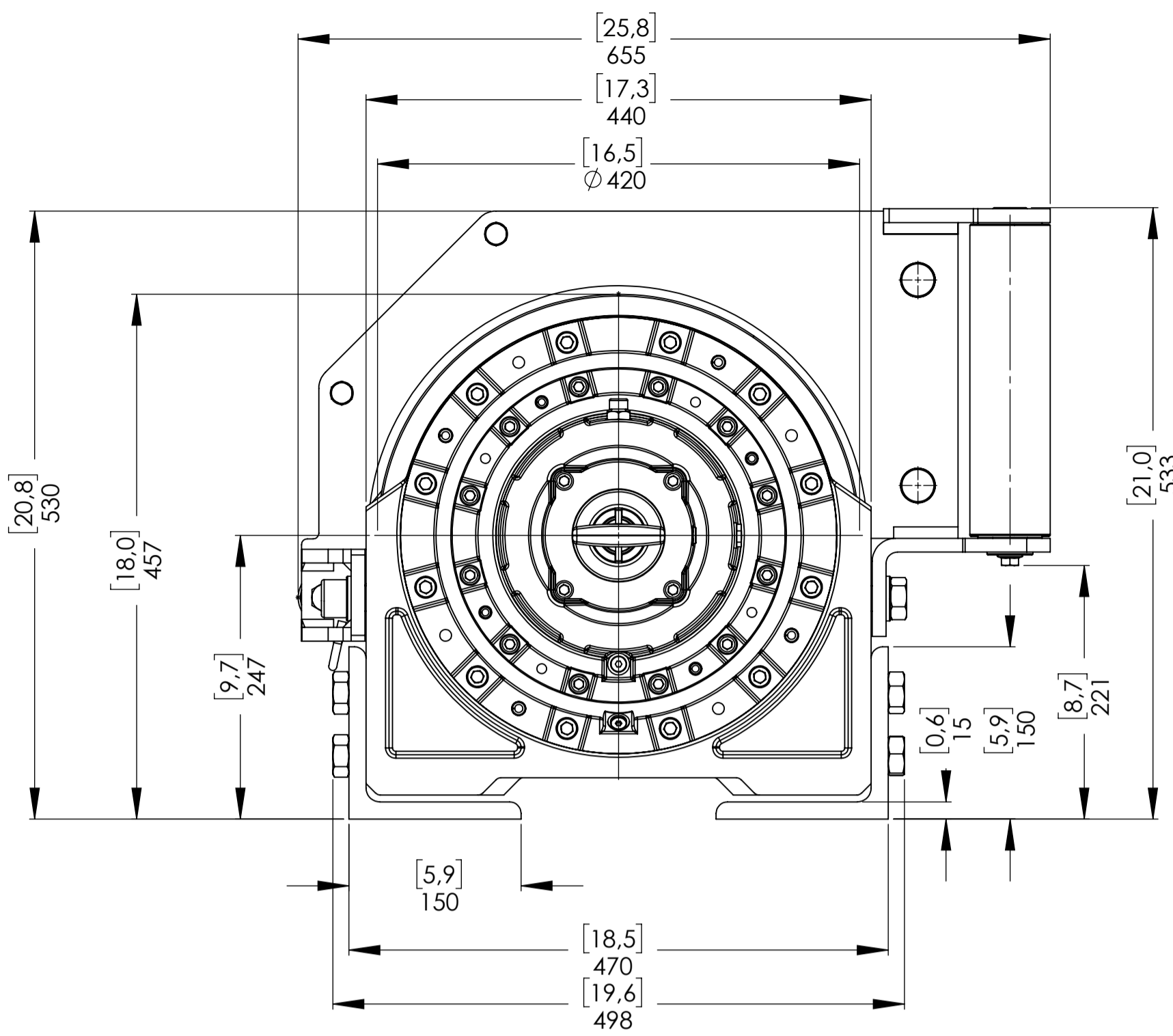
*AT THE MOMENT OF ORDER IS POSSIBLE REQUEST THE OVERCENTER VALVE PORTS ORIENTED ACCORDING TO THE LAYOUT ABOVE. IF NOT SPECIFIED, THE WINCH WILL BE SUPPLIED WITH THE OVERCENTER VALVE PORTS ORIENTED AS PER OUR STANDARD CONFIGURATION V6.

CONNECTIONS	
V1 OUT LET	G 3/4
V2 IN LET	G 3/4
C CASE DRAIN	G 1/4
E (X) DISENGAGED	G 1/8
E (Y) ENGAGED	RETURN SPRING

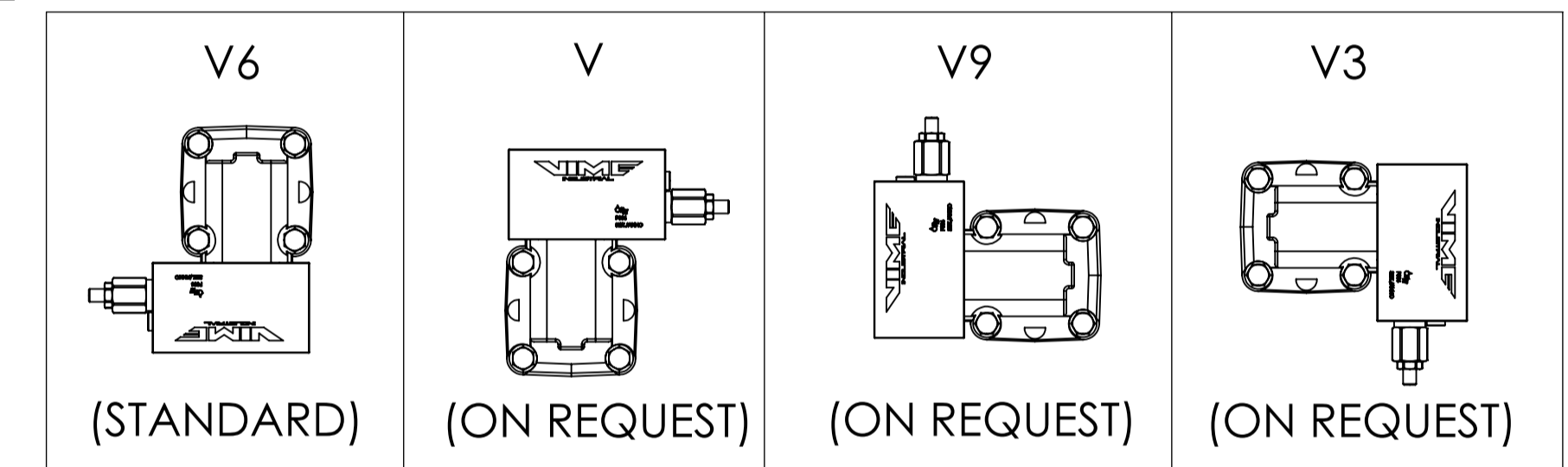
WINCH MODEL	EPHL 200 FN	WINCH GROUP	PLANETARY GEAR	PLUGS
Pulling capacity	20000 Kg	Date	Modification	1.Fill G 3/8
Max.Oil flow	75 Lt./Min.			2.Level G 3/8
Speed Line - first layer	5,1 Mt./Min.			3.Drain G 1/4
Speed Line - top layer	8,2 Mt./Min.	DANGEROUS: Do not use winch to lift support or transport personnel.		SCALE 1:4.5
 Funo - Bologna (Italy) www.vimeindustrial.com The Quality is Transparent		Gear ratio	1/97,23	WEIGHTS
		Orbital hydr. motor	100 cc	Winch (without oil) 410 Kg
		Working pressure	210 bar	Heavy-duty Roller fairlead 60 Kg
		Drum size	405 mm	Cable tensioner 10 Kg
		Drum clutch	Air-operated	
		VIME Industrial : reserves the right to improve its products through changes in designed or materials as if may seem desirable without notice		DATA 21/03/2018
				COD. EPHLFN200U10EAGPV6



Machinery Directive 2006/42/CE
EN 14492-1



OVERCENTER VALVE POSITION*



WINCH ORDERING CODE	AIR CLUTCH (STANDARD)	MANUAL CLUTCH (ON REQUEST)	HEAVY DUTY ROLLER FAIRLEAD (ON REQUEST)	CABLE TENSIONER (ON REQUEST)	OVER CENTER VALVE POSITION* (STANDARD V6)
EPHLFN200U10EAV6	X				X
EPHLFN200U10EAPV6	X			X	X
EPHLFN200U10EAGV6	X		X		X
EPHLFN200U10EAGPV6	X		X	X	X
EPHLFN200U10EV6		X			X
EPHLFN200U10EPV6		X		X	X
EPHLFN200U10EGV6		X	X		X
EPHLFN200U10EGPV6		X	X	X	X

*AT THE MOMENT OF ORDER IS POSSIBLE REQUEST THE OVERCENTER VALVE PORTS ORIENTED ACCORDING TO THE LAYOUT ABOVE. IF NOT SPECIFIED, THE WINCH WILL BE SUPPLIED WITH THE OVERCENTER VALVE PORTS ORIENTED AS PER OUR STANDARD CONFIGURATION V6.

CONNECTIONS

V1 OUT LET	G 3/4
V2 IN LET	G 3/4
C CASE DRAIN	G 1/4
E (X) DISENGAGED	-----
E (Y) ENGAGED	-----

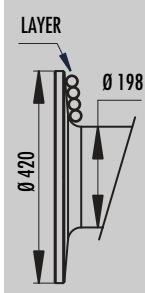
WINCH MODEL	EPHL 200 FN	WINCH GROUP	PLANETARY GEAR	PLUGS
Pulling capacity	20000 Kg	Date	Modification	1.Fill G 3/8
Max.Oil flow	75 Lt./Min.			2.Level G 3/8
Speed Line - first layer	5,1 Mt./Min.			3.Drain G 1/4
Speed Line - top layer	8,2 Mt./Min.	DANGEROUS: Do not use winch to lift support or transport personnel.		SCALE 1:4.5
		Gear ratio	1/97,23	WEIGHTS
		Orbital hydr. motor	100 cc	Winch (without oil) 410 Kg
		Working pressure	210 bar	Heavy-duty Roller fairlead 60 Kg
		Drum size	405 mm	Cable tensioner 10 Kg
		Drum clutch	Manual	
 Funo - Bologna (Italy) www.vimeindustrial.com The Quality is Transparent		VIME Industrial reserves the right to improve its products through changes in designed or materials as if may seem desirable without notice.		DATA 21/03/2018 COD. EPHLFN200U10EGPV6

1.4.13 EPHL 200 FN CE TECHNICAL DATA


FEATURES EPHL 200 FN CE (100 cc.)	
LINE PULL FIRST LAYER	20.000 KGF
LINE SPEED FIRST LAYER	5,1 MT/MIN.
MAX. WORKING PRESSURE	210 BAR
MAX. OIL SUPPLY	75 LT/MIN
MIN. OIL SUPPLY	20 LT/MIN
WIRE ROPE SIZE (EN 14492-1)	*22 MM
WIRE ROPE MINIMUM BREAKING ROPE (EN 14492-1)	40.000 KG
MAX. WIRE ROPE CAPACITY (EN 14492-1)	**60 MT

		LINE SPEED [MT/MIN]					
	OIL SUPPLY [LT/MIN]	DRUM REVOLUTION [RPM]	LINE SPEED PER LAYER [MT/MIN]				
			1	2	3	4	5
ROPE 22 MM	40	3,8	2,6	3,1	3,7	4,2	4,7
	60	5,8	4,0	4,8	5,6	6,5	7,3
	75	7,4	5,1	6,1	7,1	8,2	9,2

WIRE ROPE QUANTITY ON LAYER (DRUM LENGTH EPHL FN= 405 MM)						
LAYER	DRUM DIAMETER [MM]		WIRE ROPE ON LAYER [MT]		WIRE ROPE QUANTITY [MT]	
	22 MM	-	22 MM	-	22 MM	-
5	396	-	21,7	-	84,2	-
4	352	-	19,3	-	62,6	-
3	308	-	16,8	-	43,3	-
2	264	-	14,4	-	26,5	-
1	220	-	12,0	-	12,0	-
0	198	-	-	-	-	-



LINE PULL [KGF]		
RATIO	LAYER	LINE PULL ON [KGF]
1/97,23	1	20.000
	2	16.670
	3	14.290
	4	12.500
	5	11.110

NOTE 

Specifications are subject to change without notification and without incurring obligation. Specifications in this publication are theoretical and may vary depending on hydraulic system, environment, etc.

*Wire rope size must be respected. Recommended wire rope min. tensile strength 2160 N/mm². Wire rope minimum breaking load must be at least double of winch max. pulling capacity.

** Max. wire rope capacity according with EN 14492-1.

WEIGHT [KG]	
WINCH (WITHOUT CABLE)	410
ACCESSORY : ROLLERFAIRLEAD	60
ACCESSORY : CABLE TENSIONER	10

1.4.14 EPHL 200 FN CE WINCH PERFORMANCE CHARTS AT THE 1ST LAYER

