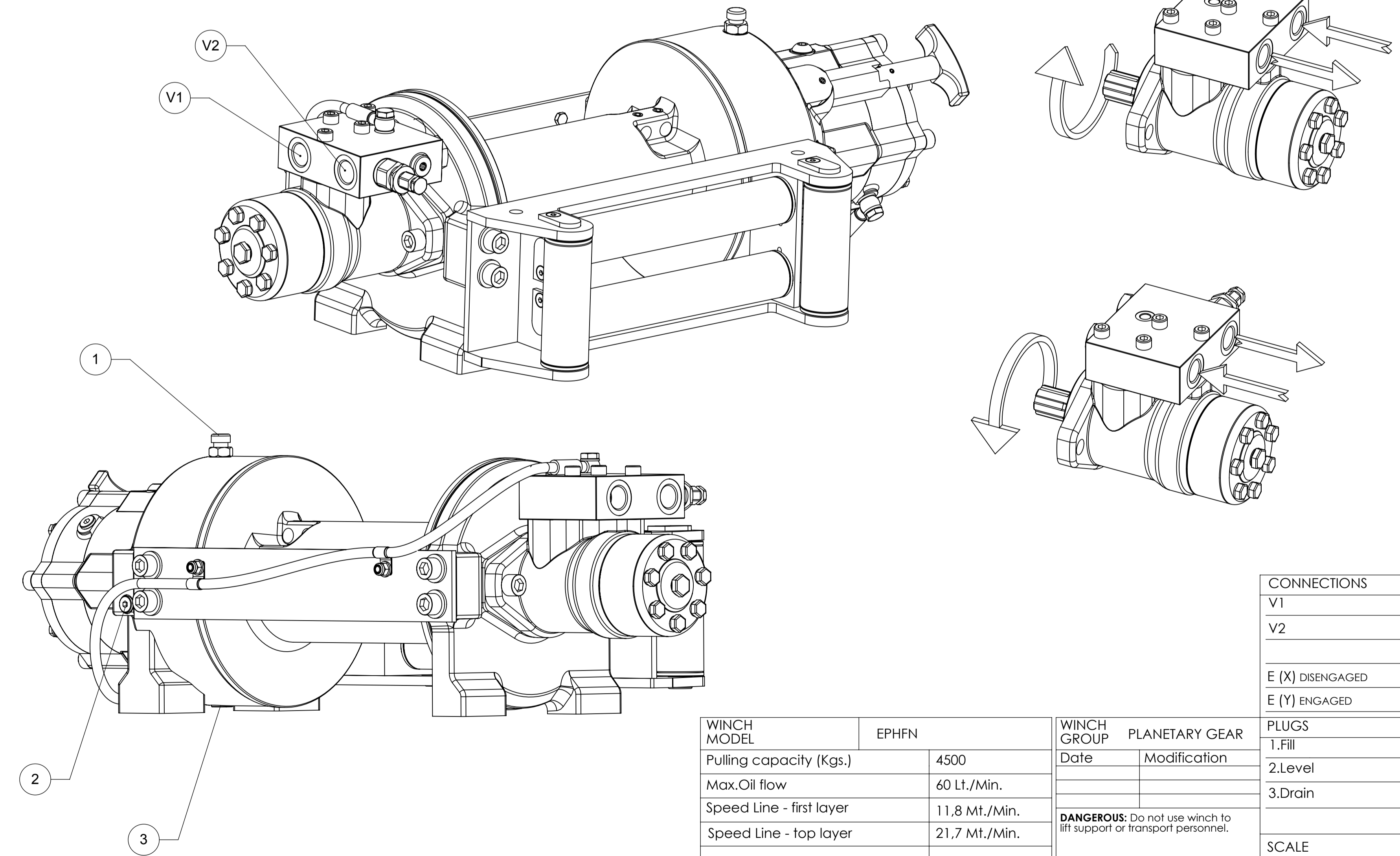
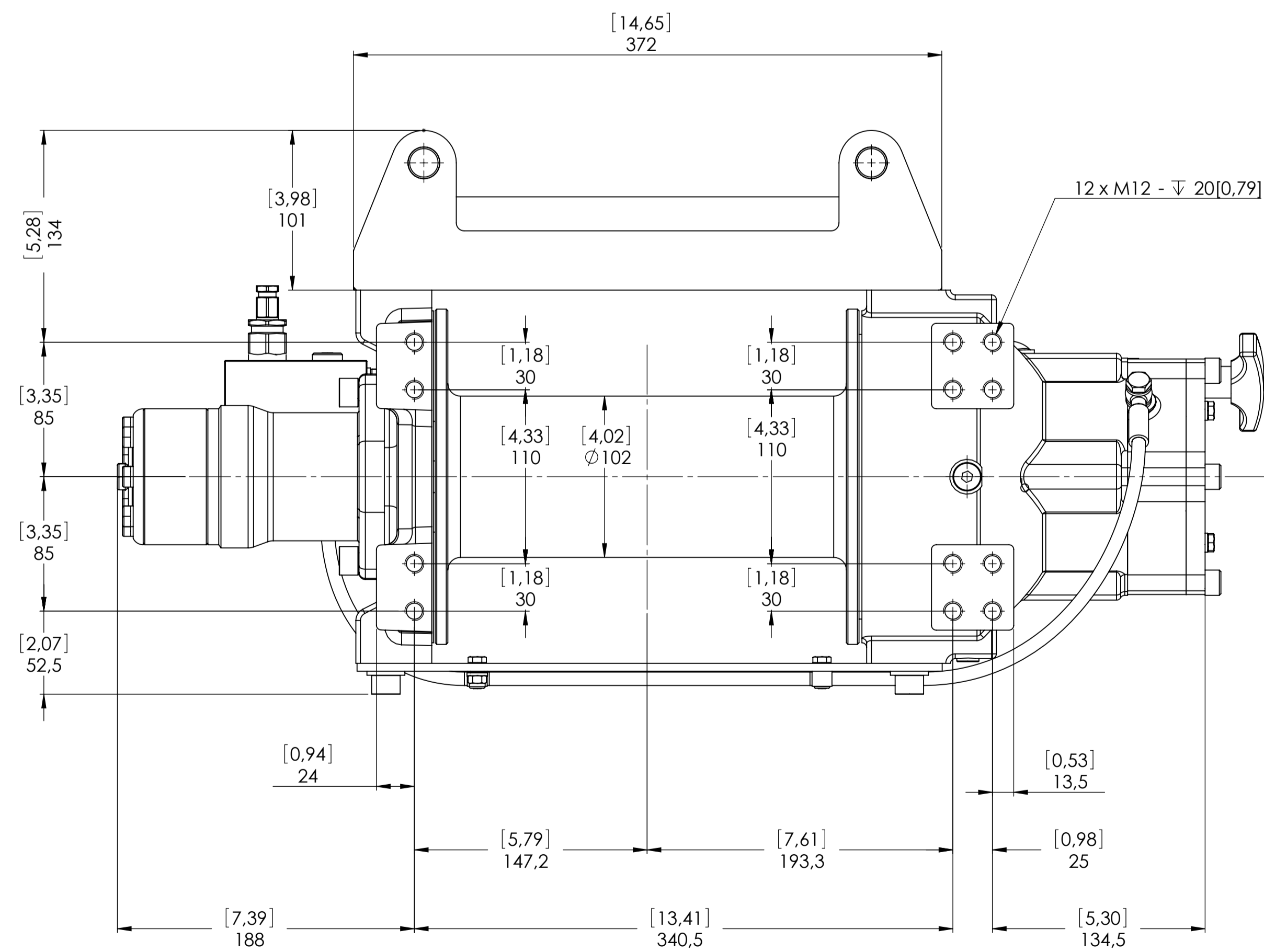
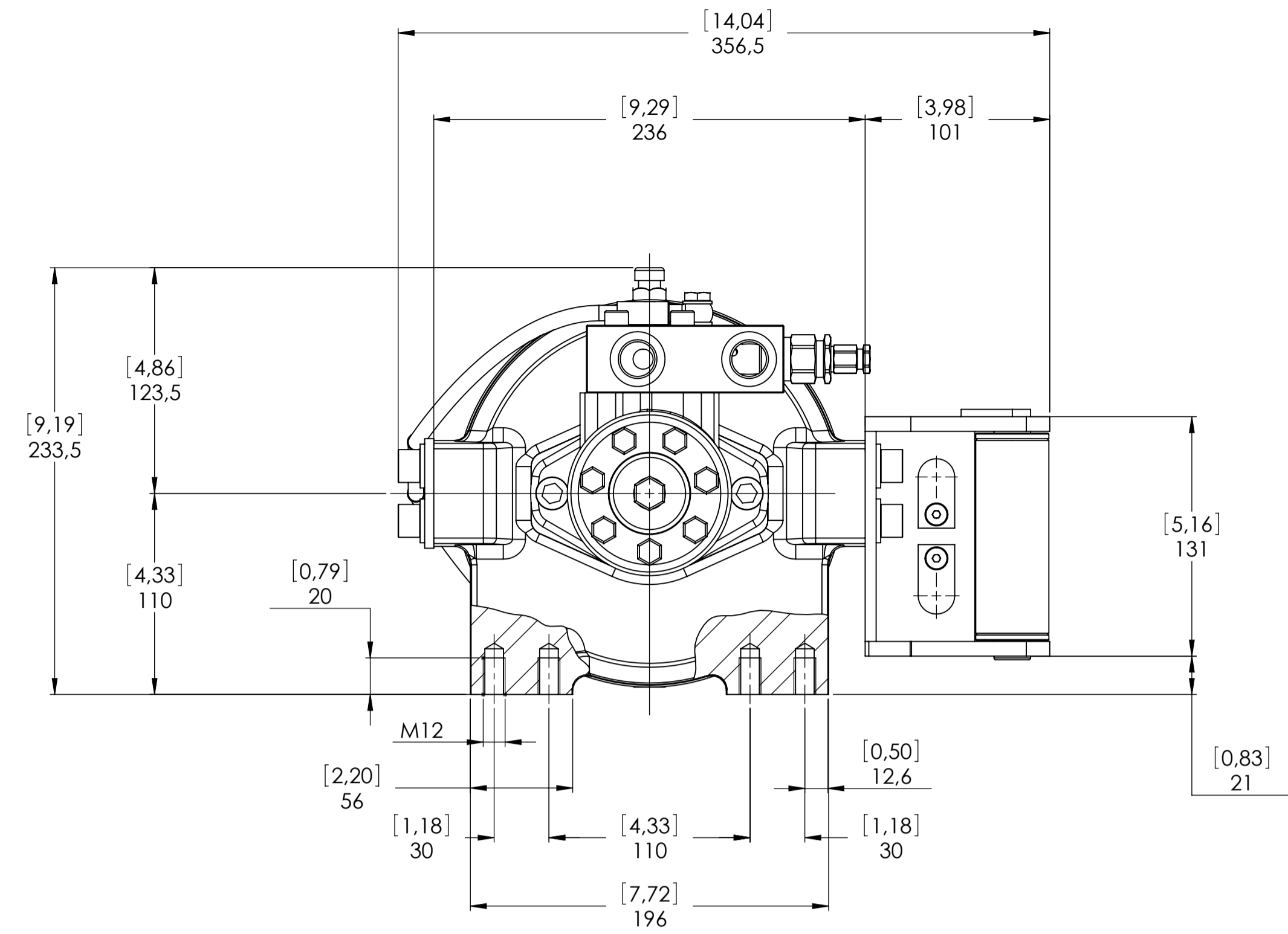
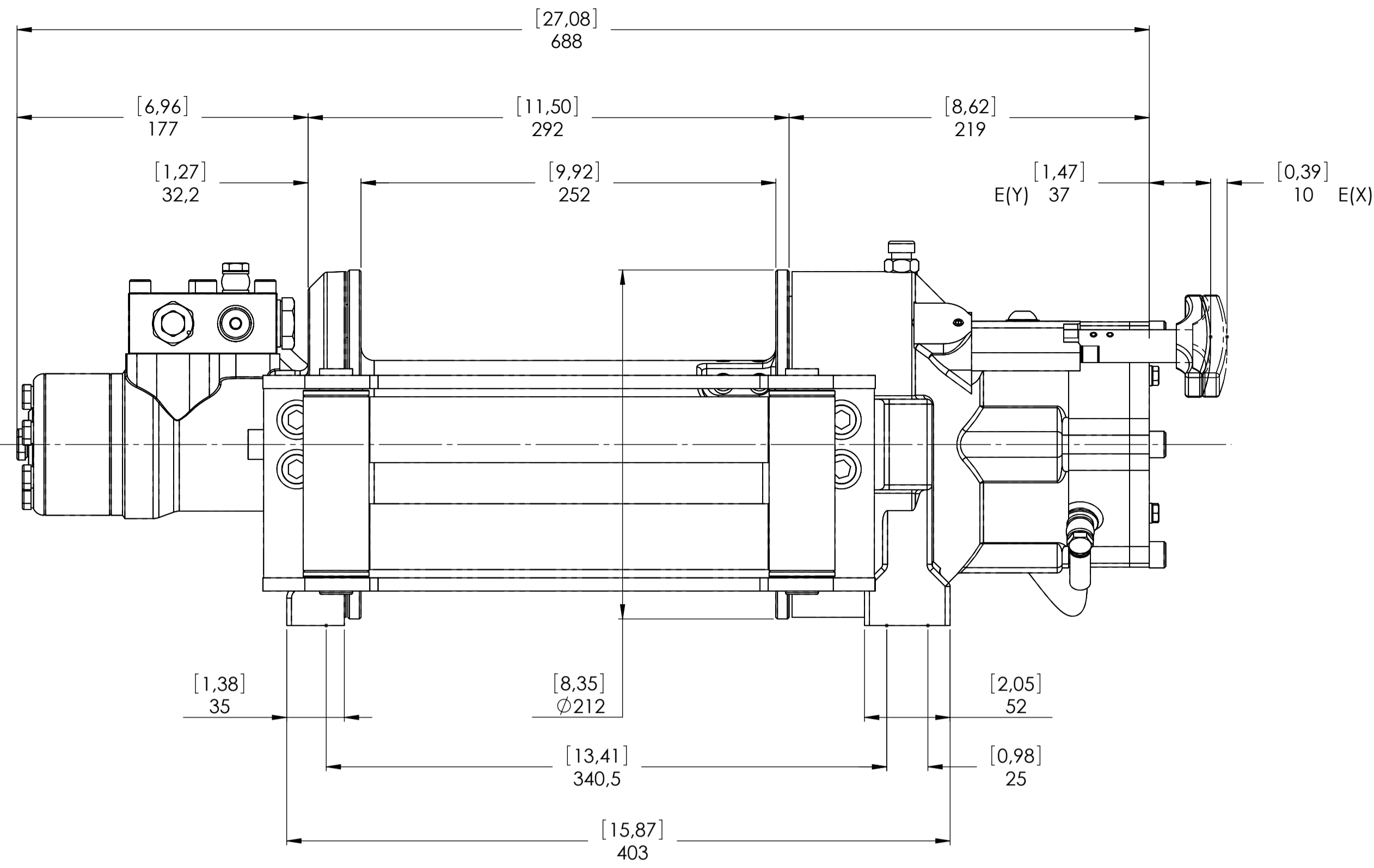
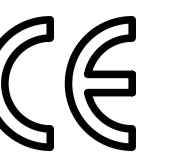


Machinery Directive 2006/42/CE  
EN 14492-1

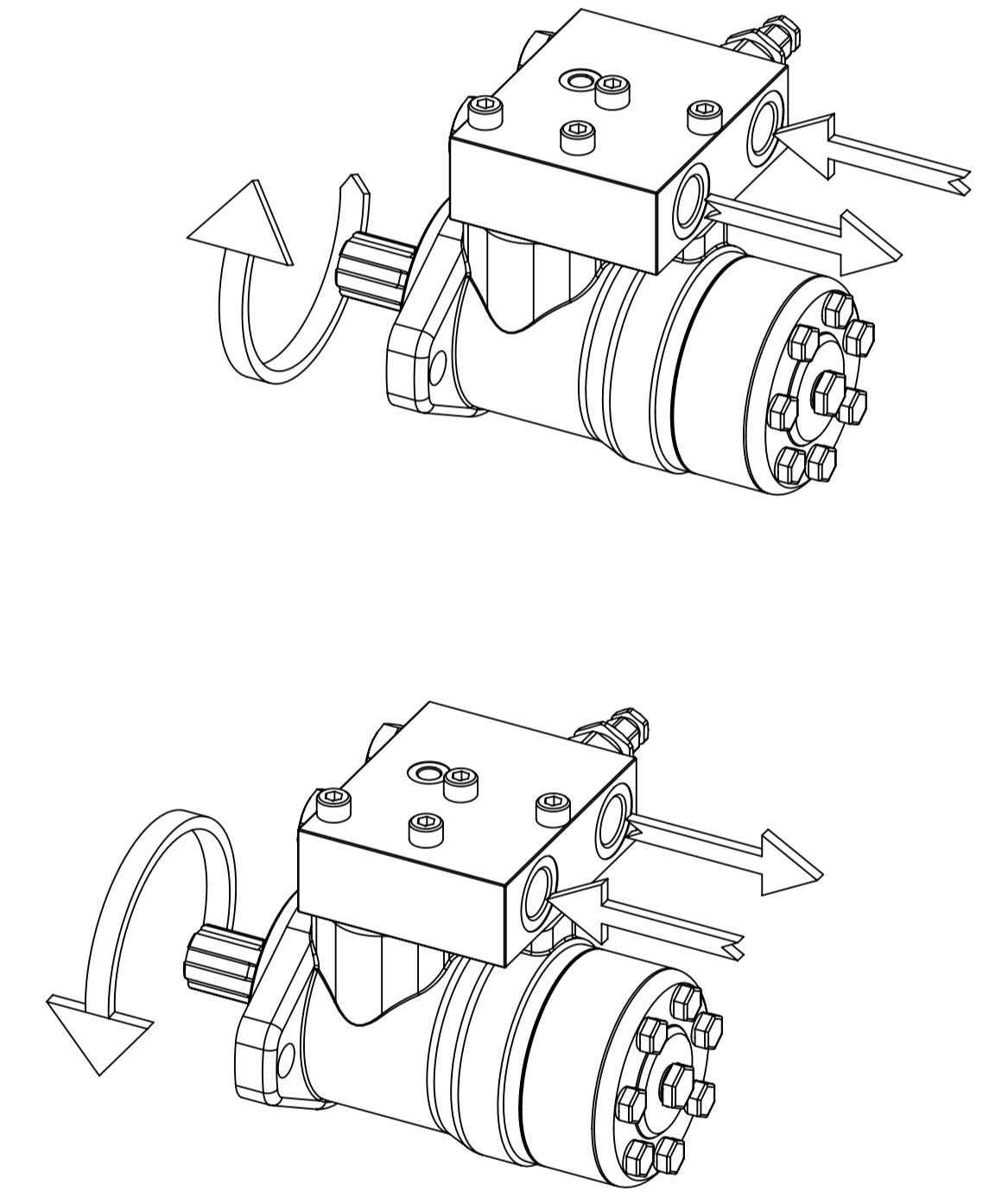
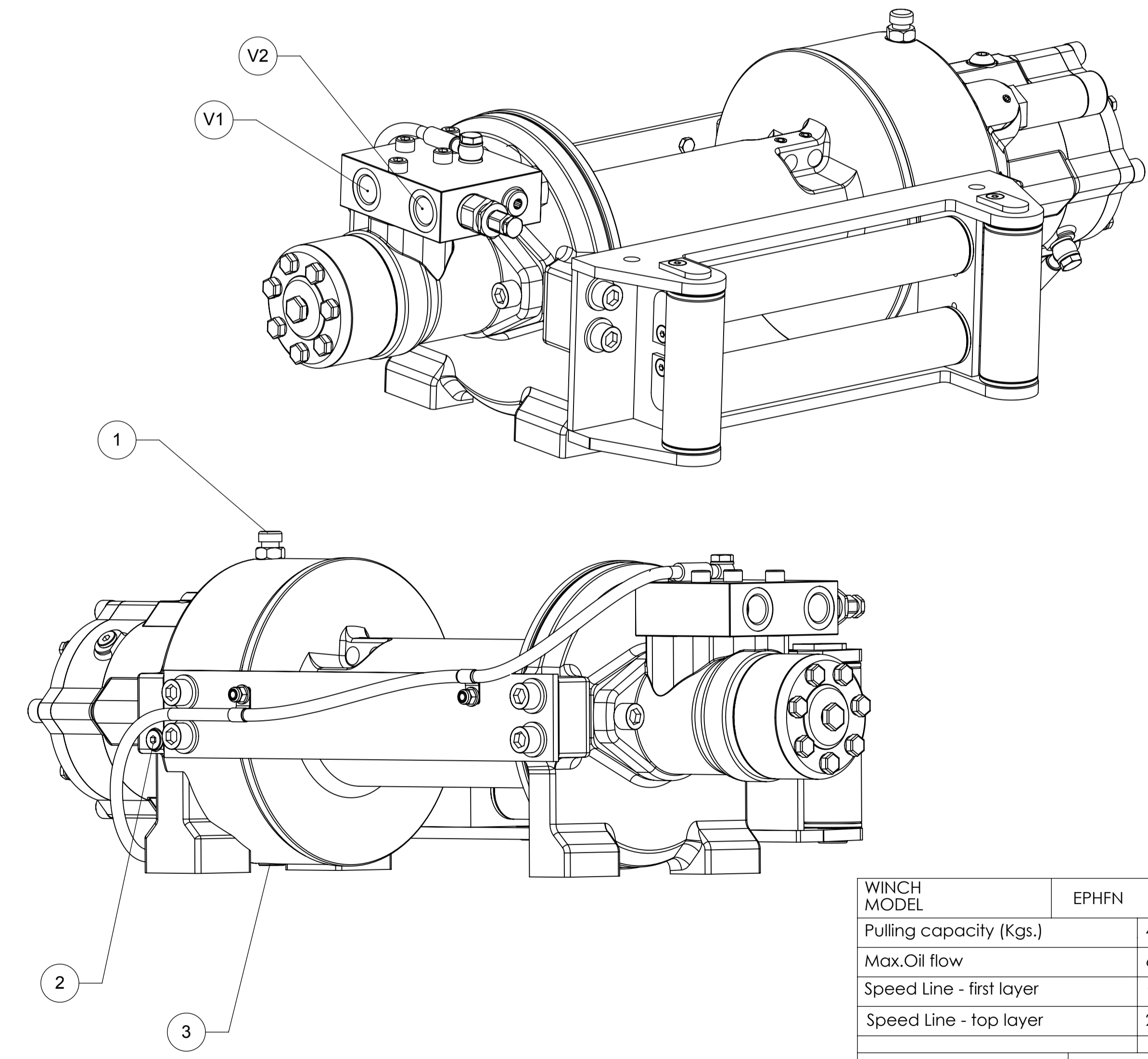
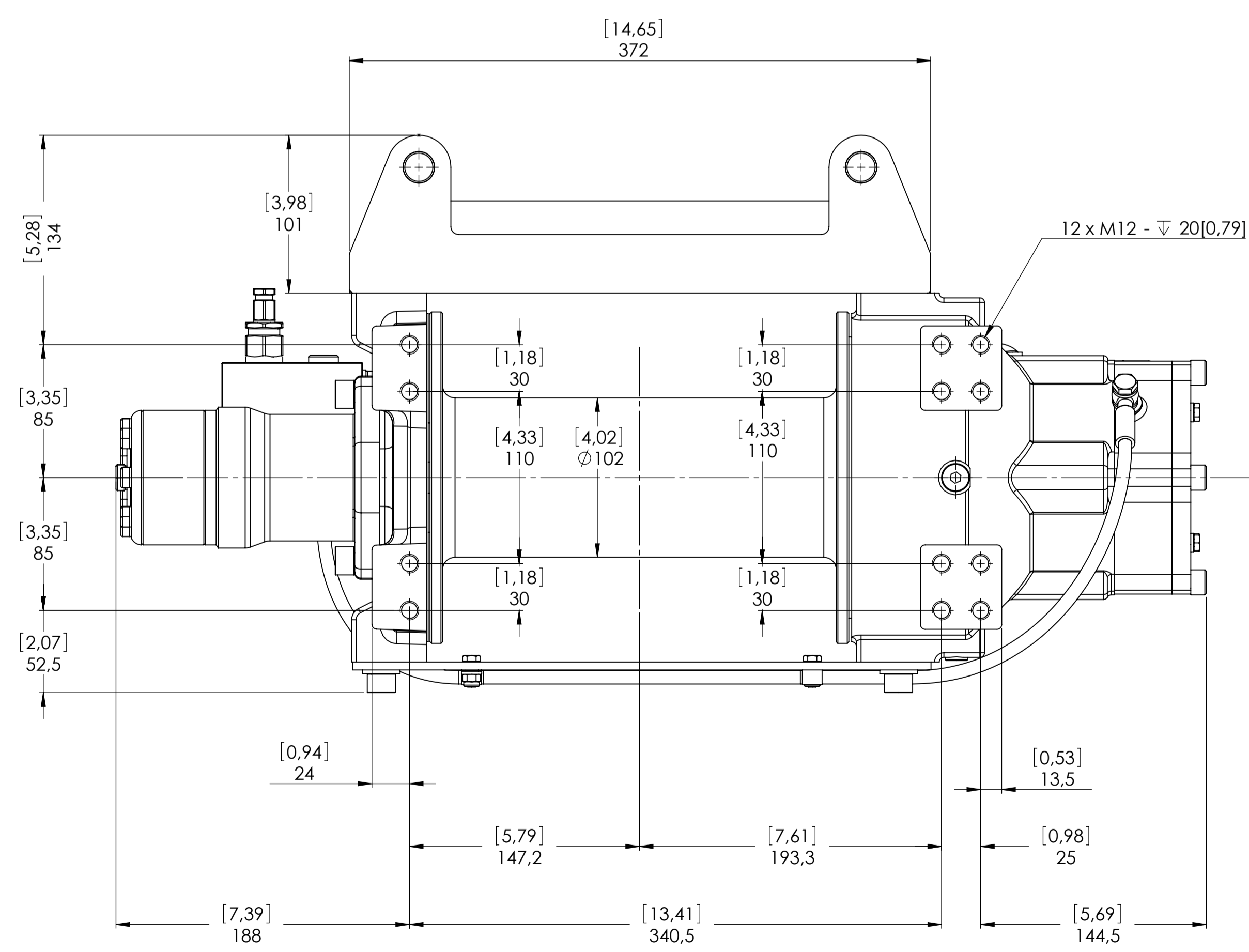
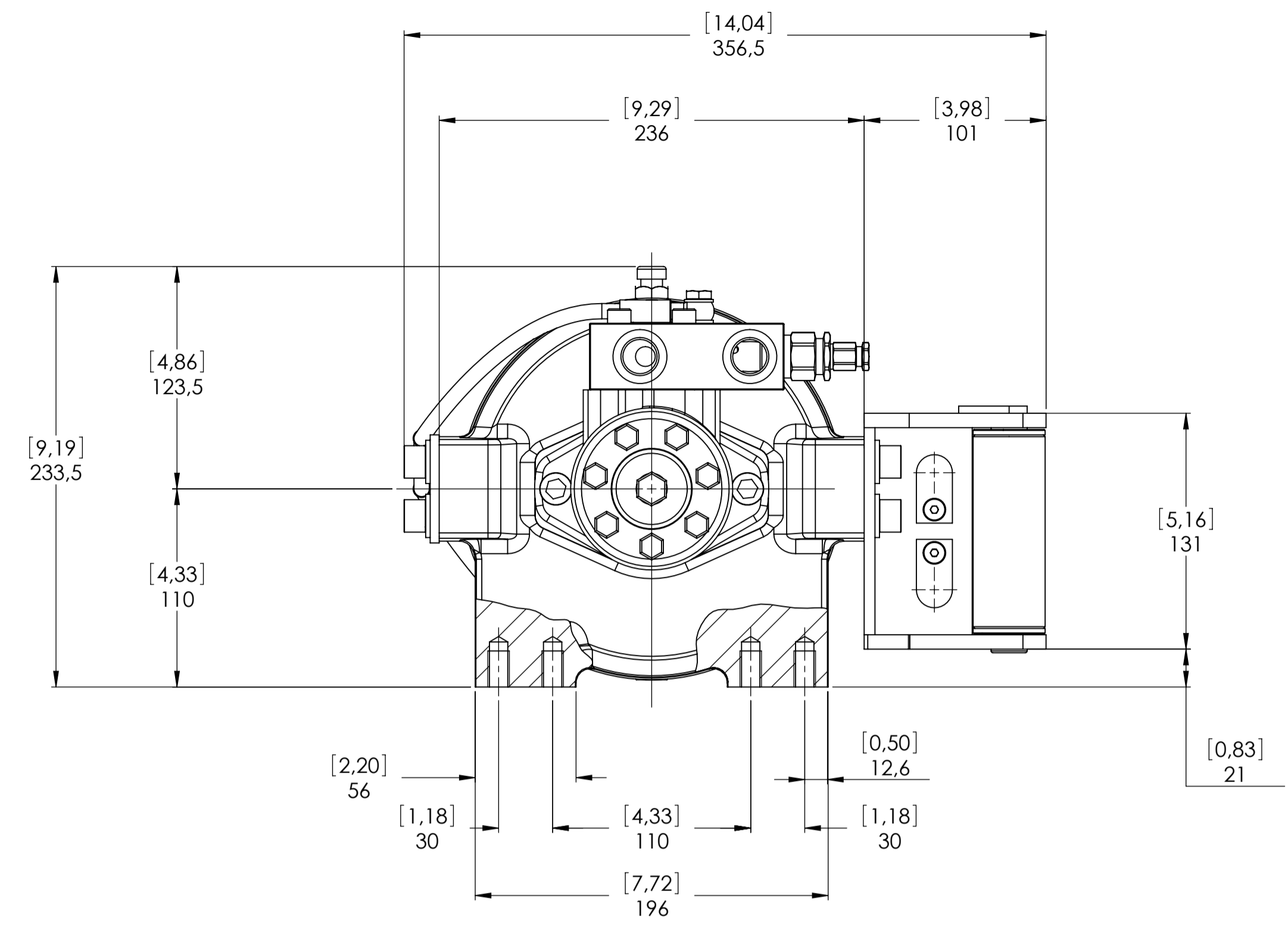
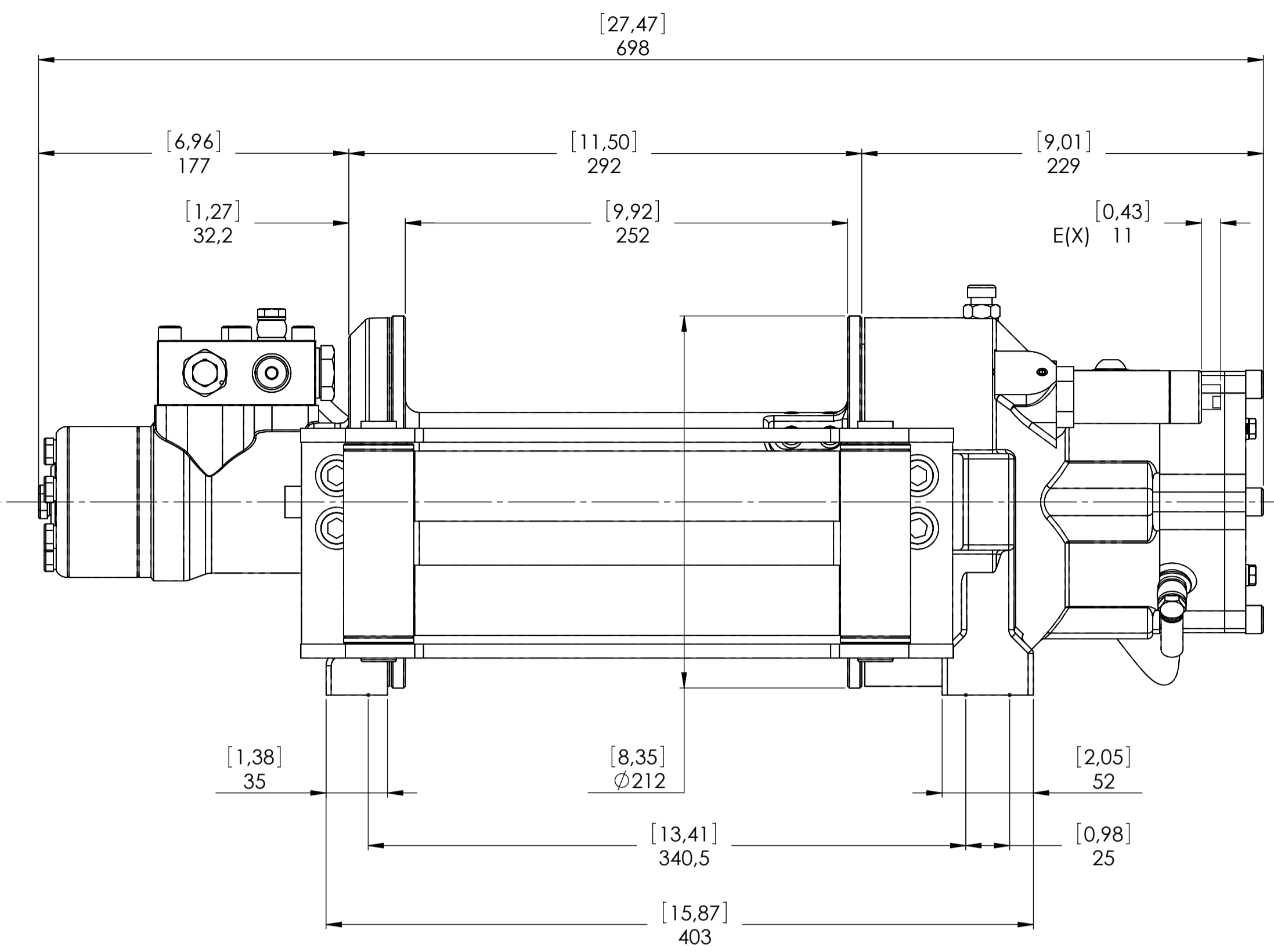


WINCH MODEL	EPHFN	WINCH GROUP	PLANETARY GEAR
Pulling capacity (Kgs.)	4500	Date	Modification
Max.Oil flow	60 Lt./Min.	<b>DANGEROUS:</b> Do not use winch to lift support or transport personnel.	
Speed Line - first layer	11,8 Mt./Min.		
Speed Line - top layer	21,7 Mt./Min.		
		Gear ratio	5,3 : 1
Funo - Bologna (Italy) www.vimeindustrial.com		Orbital hydr. motor	315 cc
The Quality is Transparent		Working pressure	150 Bar
		Drum size	252
		Drum clutch	Manual
		VIME Industrial reserves the right to improve its products through changes in designed or materials as it may seem desirable without notice.	
		DATE 26/04/2010	

CONNECTIONS	
V1	1/2" G
V2	1/2" G
E (X) DISENGAGED	-----
E (Y) ENGAGED	-----
PLUGS	
1.Fill	1/4" G
2.Level	1/8" G
3.Drain	1/4" G
SCALE 1: 2,5	
WEIGHTS	
Winch	47,9 Kgs.
Heavy-duty Roller fairlead	9,8 Kgs.
Rope tensiometer	2 Kgs.
CODE	EPHFN45D315GV

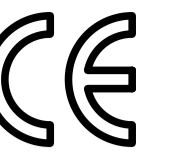


Machinery Directive 2006/42/CE  
EN 14492-1

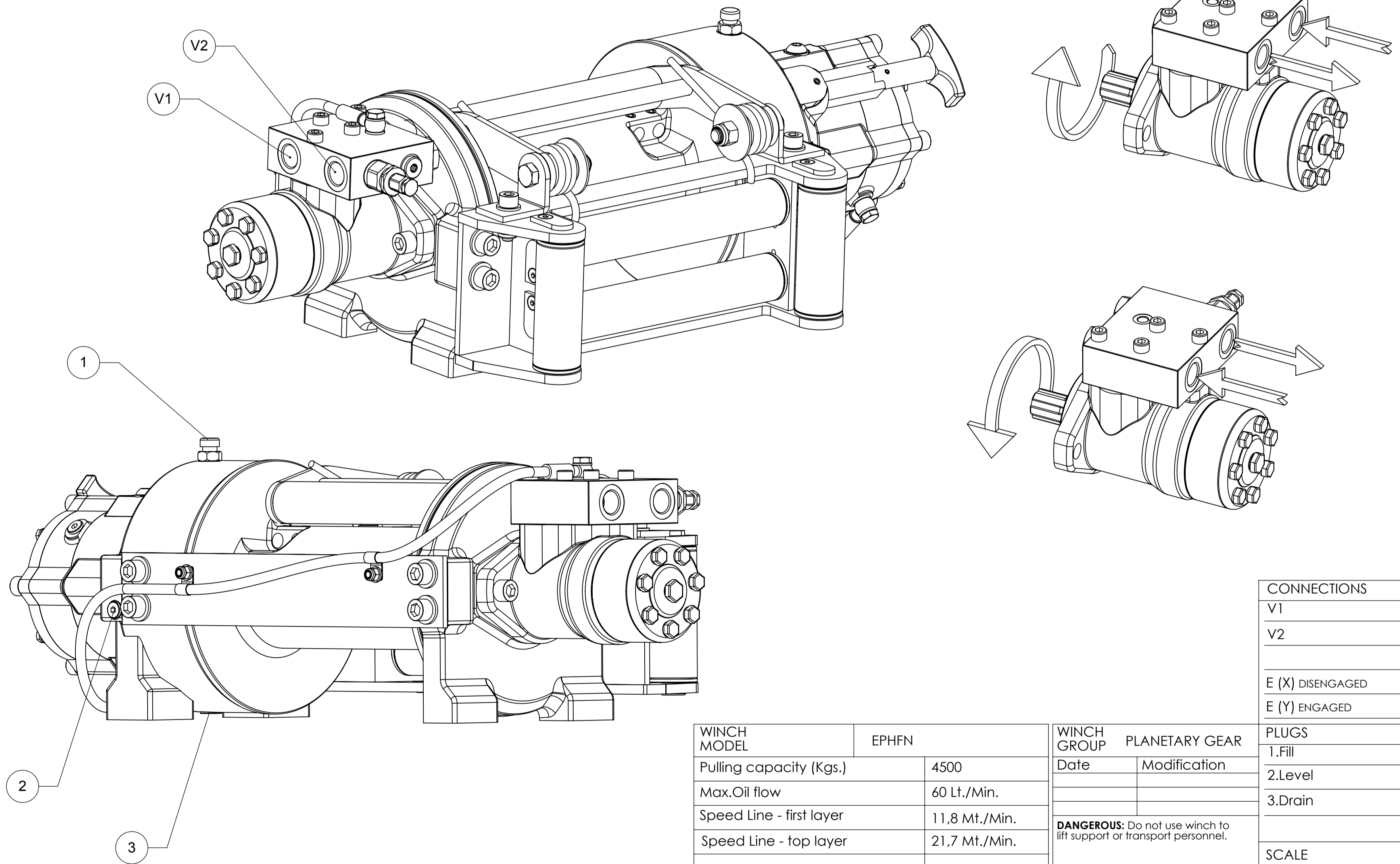
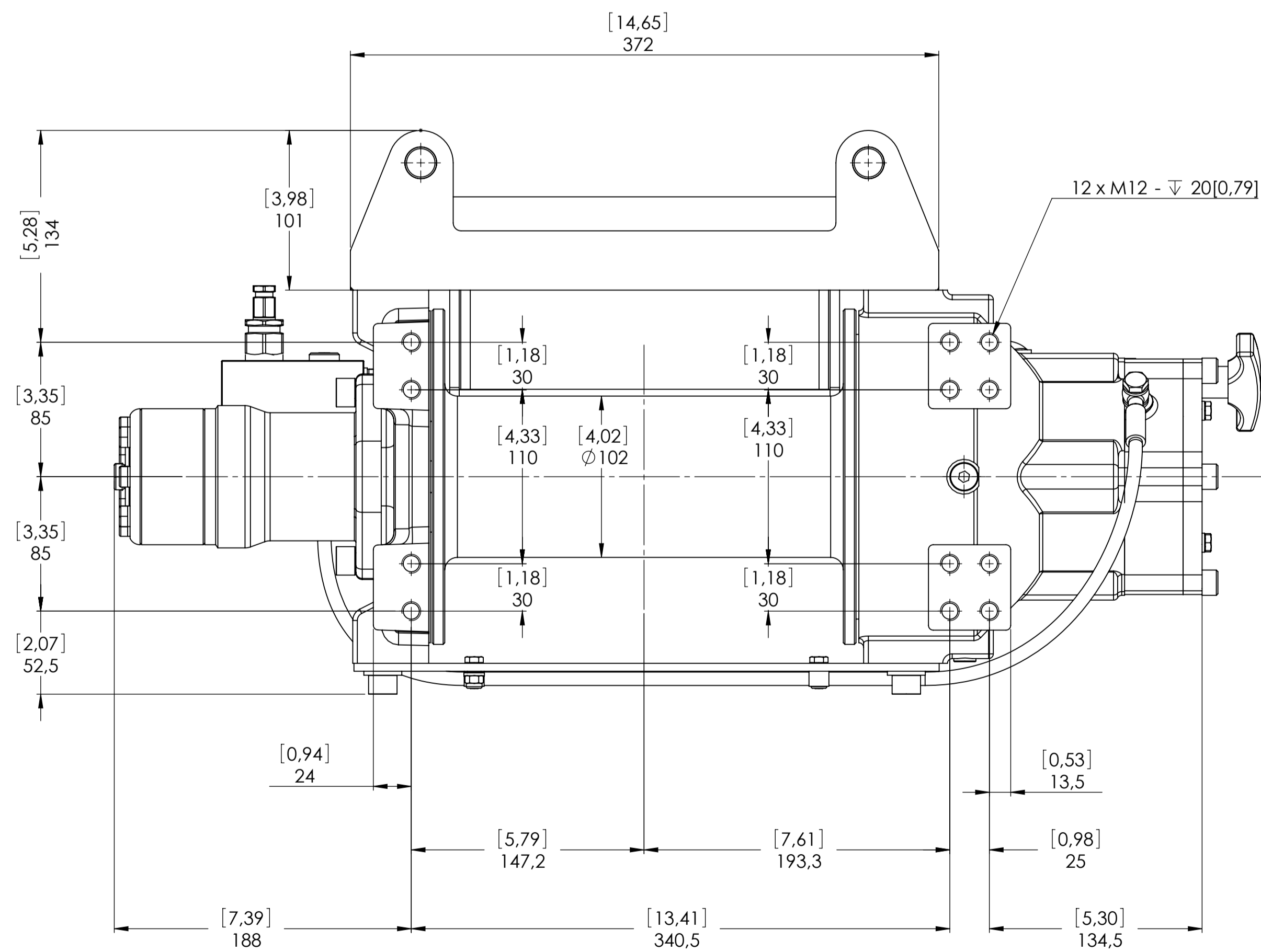
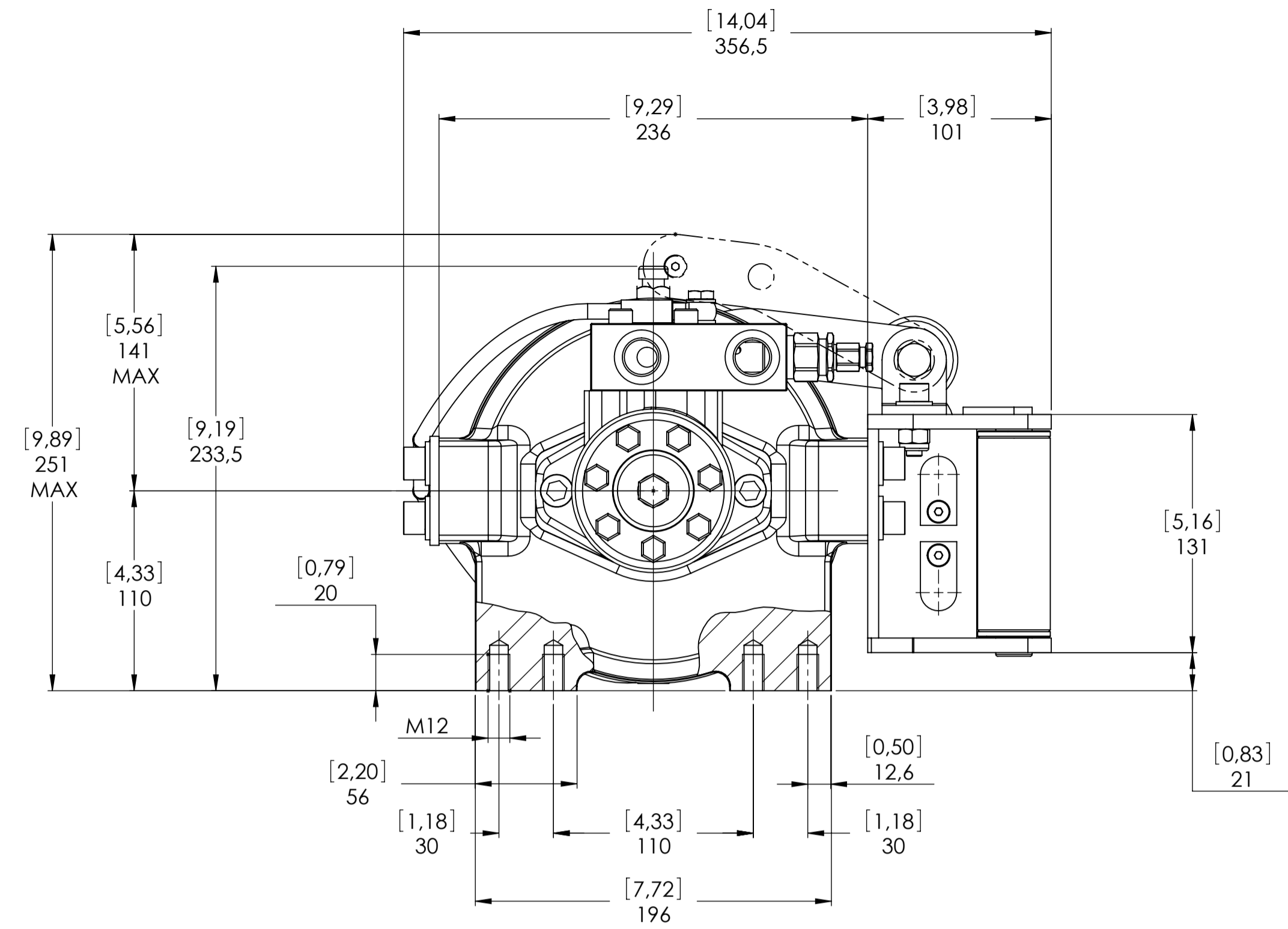
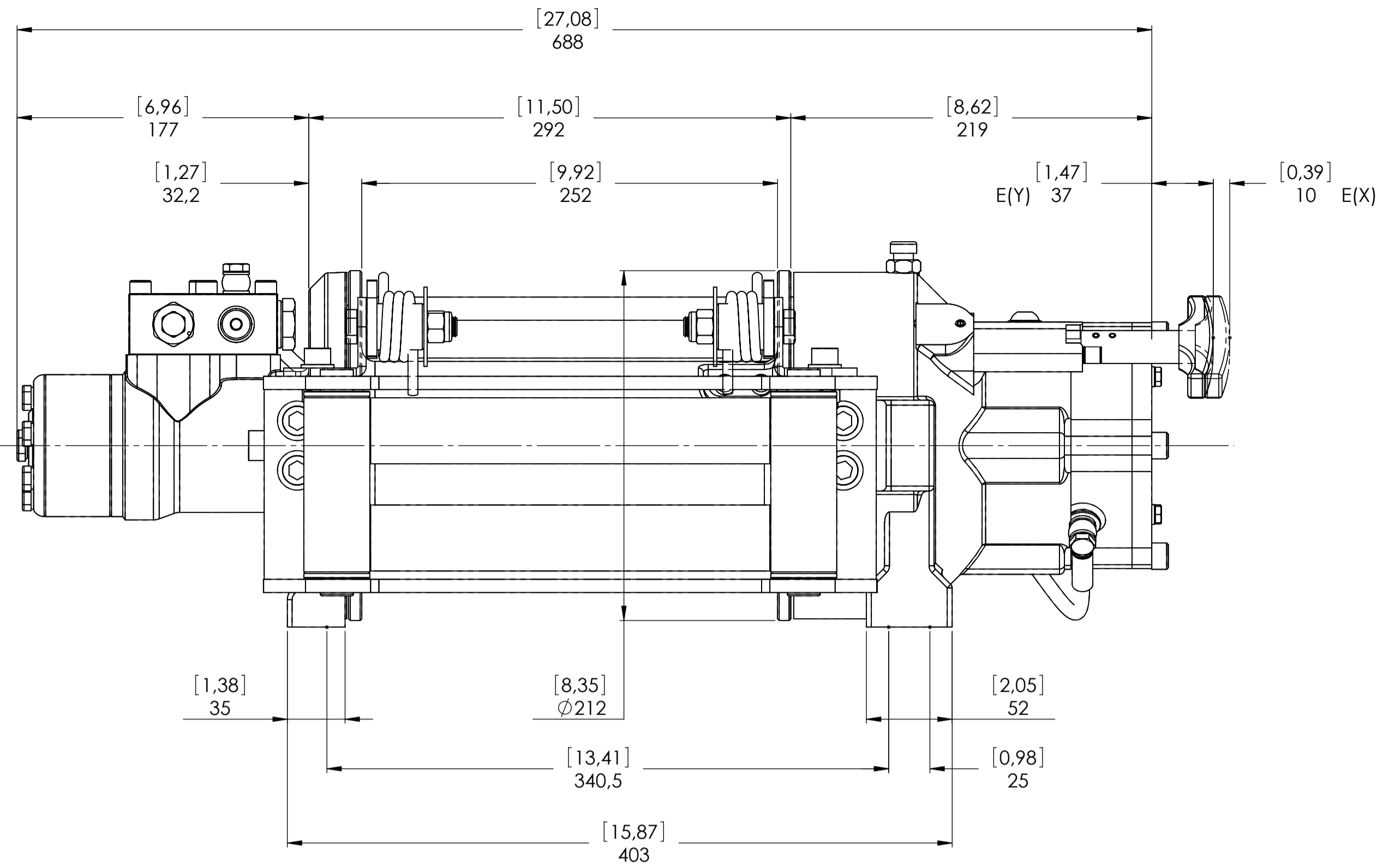


WINCH MODEL	EPHFN	WINCH GROUP	PLANETARY GEAR
Pulling capacity (Kgs.)	4500	Date	Modification
Max.Oil flow	60 Lt./Min.	<b>DANGEROUS:</b> Do not use winch to lift support or transport personnel.	
Speed Line - first layer	11,8 Mt./Min.		
Speed Line - top layer	21,7 Mt./Min.		
Gear ratio		5,3 : 1	
Orbital hydr. motor		315 cc	
Working pressure		150 Bar	
Drum size		252	
Drum clutch		Air-operated	
The Quality is Transparent		DATE 26/04/2010	

CONNECTIONS	
V1	1/2" G
V2	1/2" G
E (X) DISENGAGED	1/8 G
E (Y) ENGAGED	RETURN SPRING
PLUGS	
1.Fill	1/4" G
2.Level	1/8" G
3.Drain	1/4" G
SCALE	
1 : 2,5	
WEIGHTS	
Winch	47,9 Kgs.
Heavy-duty Roller fairlead	9,8 Kgs.
Rope tensioner	2 Kgs.
CODE	EPHFN45D315AGV

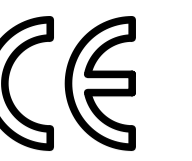


Machinery Directive 2006/42/CE  
EN 14492-1

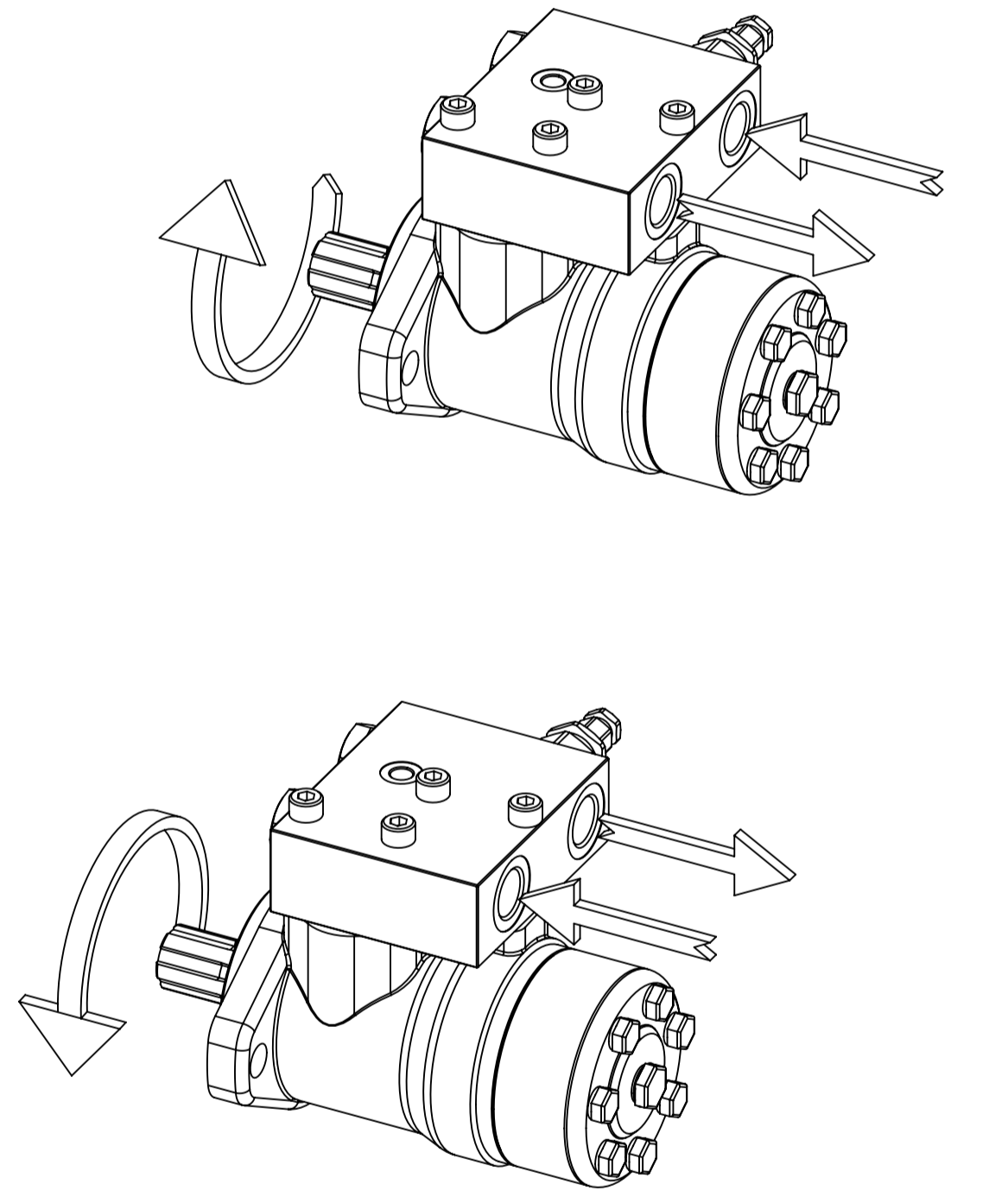
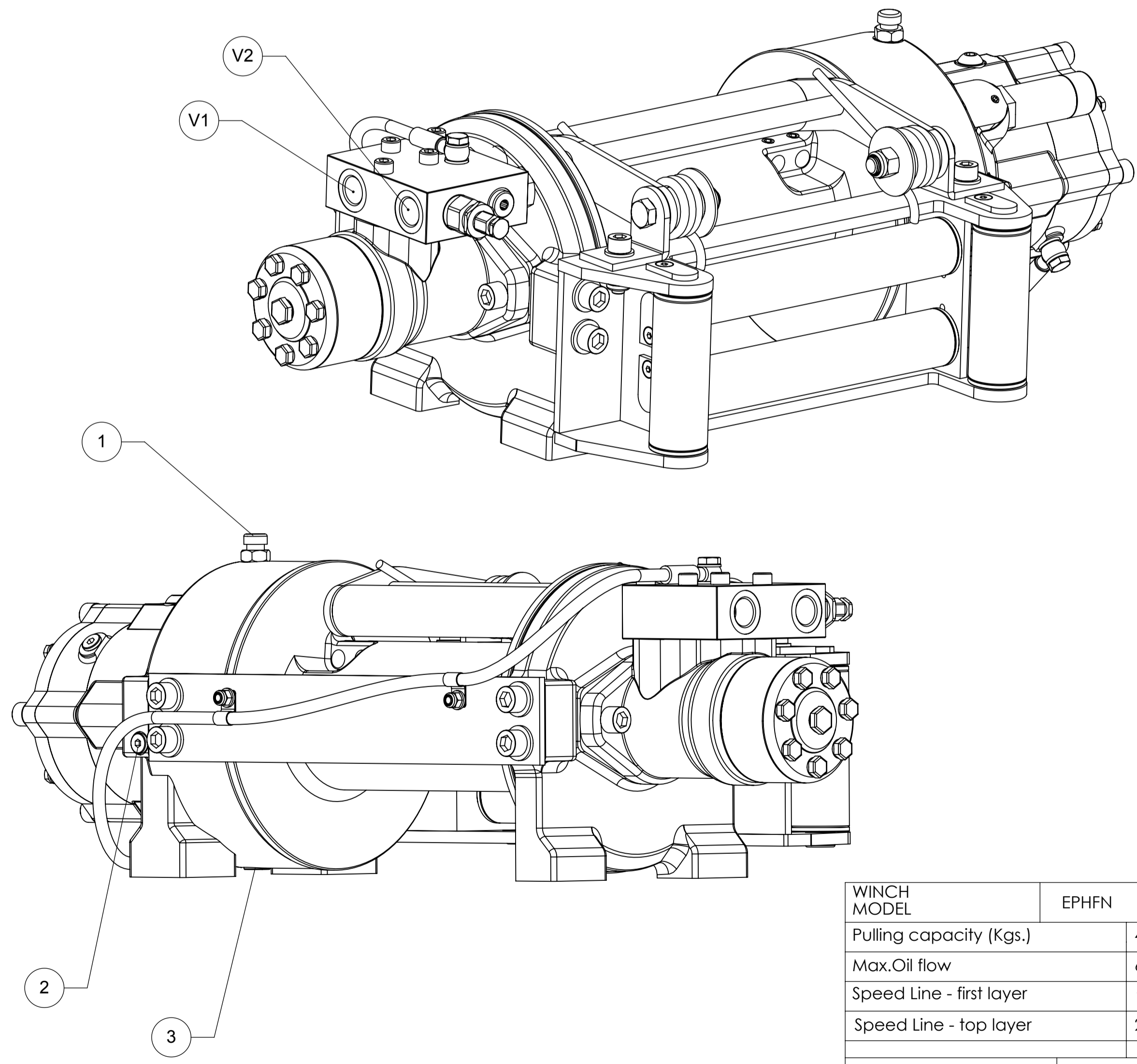
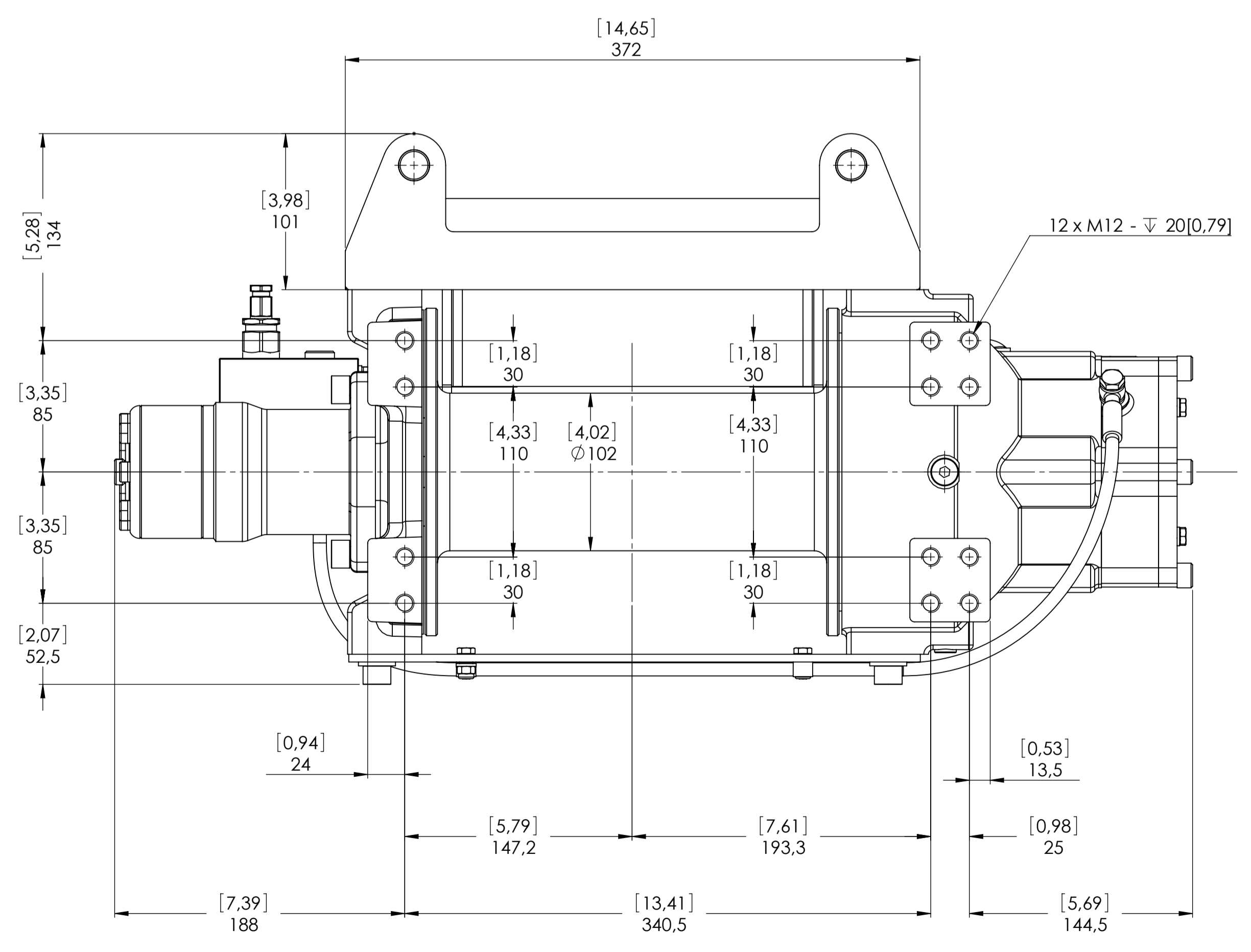
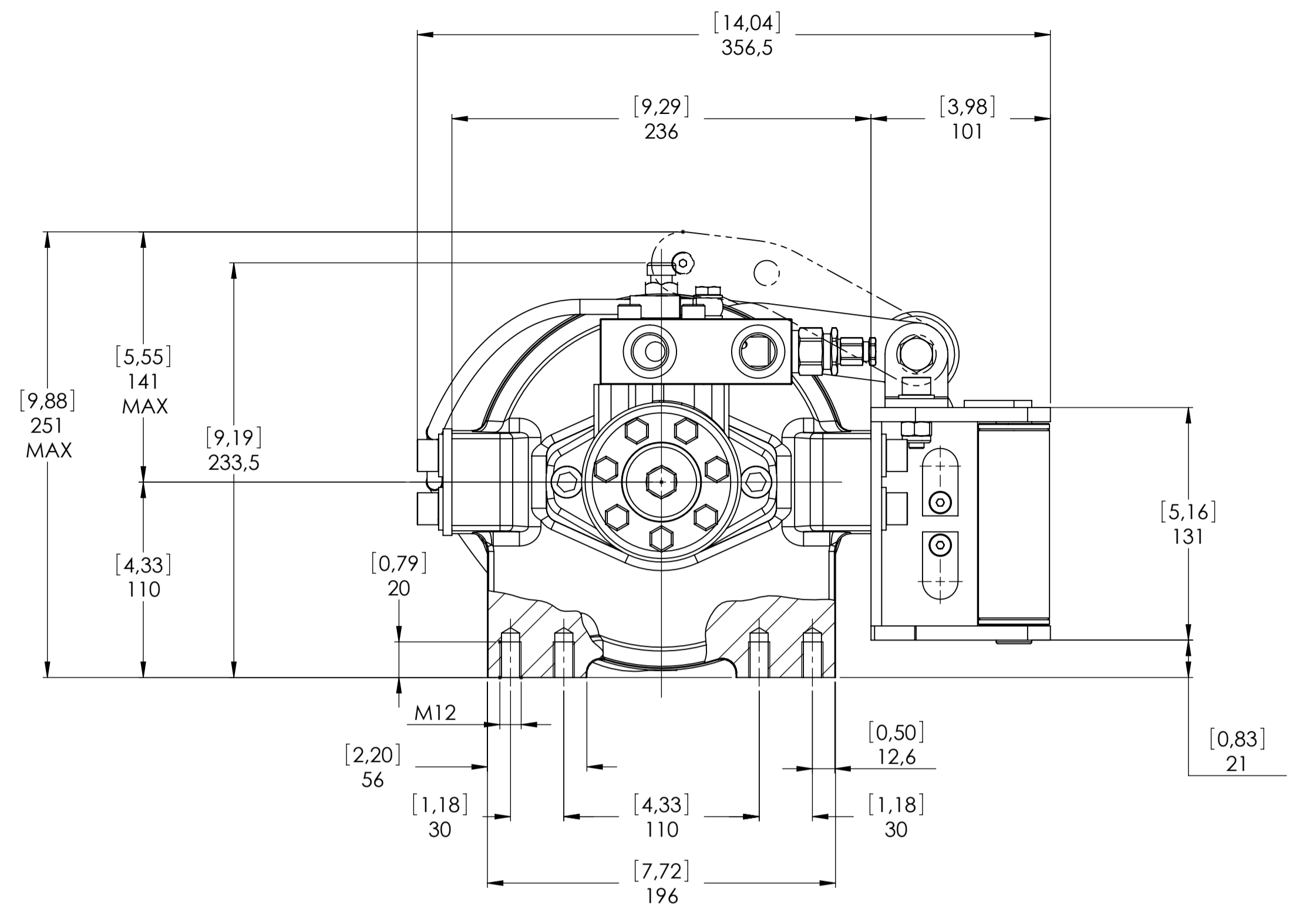
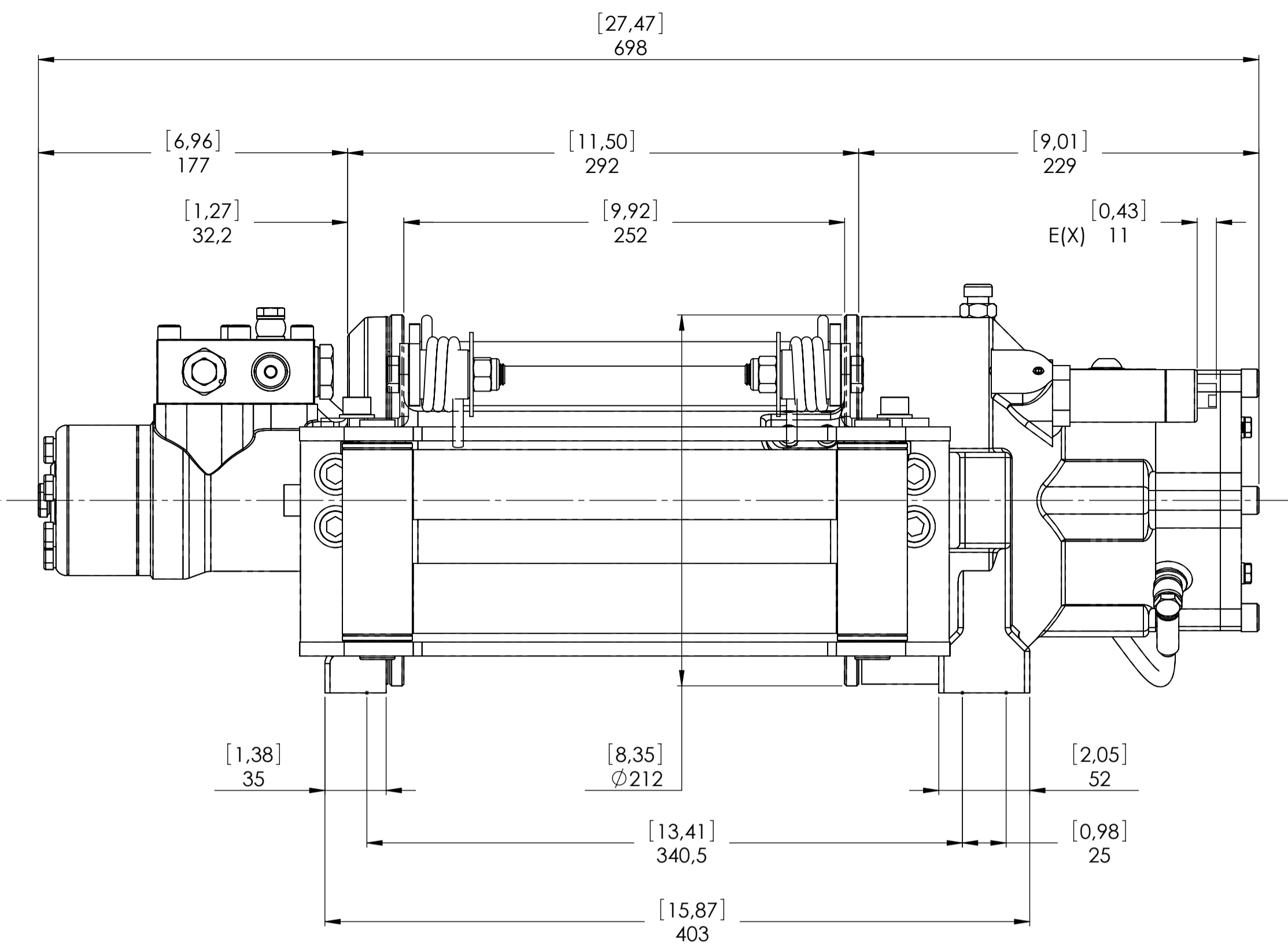


WINCH MODEL	EPHFN	WINCH GROUP	PLANETARY GEAR
Pulling capacity (Kgs.)	4500	Date	Modification
Max.Oil flow	60 Lt./Min.	<b>DANGEROUS:</b> Do not use winch to lift support or transport personnel.	
Speed Line - first layer	11,8 Mt./Min.		
Speed Line - top layer	21,7 Mt./Min.	SCALE   1: 2,5	
Gear ratio		5,3 : 1	
Orbital hydr. motor		315 cc	
Working pressure		150 Bar	
Drum size		252	
Drum clutch		Manual	
The Quality is Transparent		DATE 26/04/2010	

CONNECTIONS	
V1	1/2" G
V2	1/2" G
E (X) DISENGAGED	-----
E (Y) ENGAGED	-----
PLUGS	
1.Fill	1/4" G
2.Level	1/8" G
3.Drain	1/4" G
WEIGHTS	
Winch	47,9 Kgs.
Heavy-duty Roller fairlead	9,8 Kgs.
Rope tensioner	2 Kgs.
CODE	EPHFN45D315GPV



Machinery Directive 2006/42/CE  
EN 14492-1



WINCH MODEL	EPHFN	WINCH GROUP	PLANETARY GEAR
Pulling capacity (Kgs.)	4500	Date	Modification
Max.Oil flow	60 Lt./Min.	<b>⚠ DANGEROUS:</b> Do not use winch to lift support or transport personnel.	
Speed Line - first layer	11,8 Mt./Min.		
Speed Line - top layer	21,7 Mt./Min.	DATE 26/04/2010	
<p>Funo - Bologna (Italy) www.vimeindustrial.com</p>		Gear ratio	5,3 : 1
The Quality is Transparent		Orbital hydr. motor	315 cc
		Working pressure	150 Bar
		Drum size	252
		Drum clutch	Air-operated

CONNECTIONS	
V1	1/2" G
V2	1/2" G
E (X) DISENGAGED	1/8 G
E (Y) ENGAGED	RETURN SPRING
PLUGS	
1.Fill	1/4" G
2.Level	1/8" G
3.Drain	1/4" G
SCALE	
1 : 2,5	
WEIGHTS	
Winch	47,9 Kgs.
Heavy-duty Roller fairlead	9,8 Kgs.
Rope tensioner	2 Kgs.
CODE	EPHFN45D315AGPV

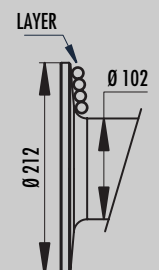
## 1.4.9 EPH 4500 FN WINCH TECHNICAL DATA

RATIO	WIRE ROPE SIZE [MM]	LAYER	LINE PULL [KG]
5,3:1	11*	1	4.500
		2	3.767
		3	3.239
		4	2.841
		5	2.530

OIL SUPPLY [LT/MIN]	DRUM REVOLUTION [RPM]	LINE SPEED [MT/MIN]				
		1	2	3	4	5
40	19,9	7,1	8,4	9,8	11,2	12,5
50	27,4	9,7	11,6	13,5	15,4	17,3
60	32,9	11,7	14,0	16,2	18,5	20,8

WIRE ROPE MINIMUM BREAKING LOAD EN 14492-1 [KG]	9.000
---	-------

DRUM EPH 4500 FN = 252 MM



LAYER	DRUM DIAMETER		WIRE ROPE ON LAYER		WIRE ROPE QUANTITY	
			[MT]		[MT]	
	Ø MM		11 MM	00 MM	11 MM	00 MM
5	201	-	13,8	-	54,0	-
4	179	-	12,3	-	40,2	-
3	157	-	10,8	-	27,9	-
2	135	-	9,3	-	17,1	-
1	113	-	7,8	-	7,8	-
0	102	-	-	-	-	-

WIRE ROPE CAPACITY [MT]		MAX. WIRE ROPE CAPACITY EN 14492-1 [MT]		MAX. WIRE ROPE CAPACITY [MT]	
11 MM	00 MM	11 MM	00 MM	11 MM	00 MM
28	00	40**	00	54	00

DESCRIPTION	WEIGHTS
	KGS.
WINCH (WITHOUT CABLE)	47,9
ACCESSORY : ROLLERFAILREAD	9,8
ACCESSORY : CABLE TENSIONER	2,0

### NOTES

Specifications are subject to change without notification and without incurring obligation. Specifications in this publication are theoretical and may vary depending on hydraulic system, environment, etc.

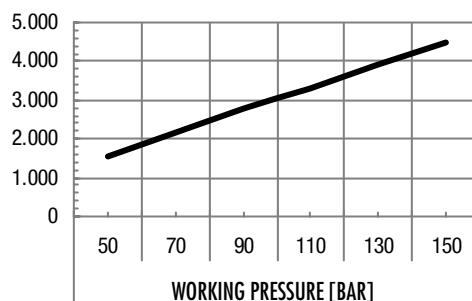
### NOTES

\*Wire rope size must be respected. Recommended wire rope min. tensile strength 2160 N/mm<sup>2</sup>.  
Wire rope minimum breaking load must be at least double of winch max. pulling capacity.

\*\* Max. wire rope capacity according with EN 14492-1.

## 1.4.10 EPH 4500 FN WINCH PERFORMANCE CHARTS AT THE 1<sup>ST</sup> LAYER

LINE PULL-FIRST LAYER [KG]



LINE SPEED [M/MIN]

