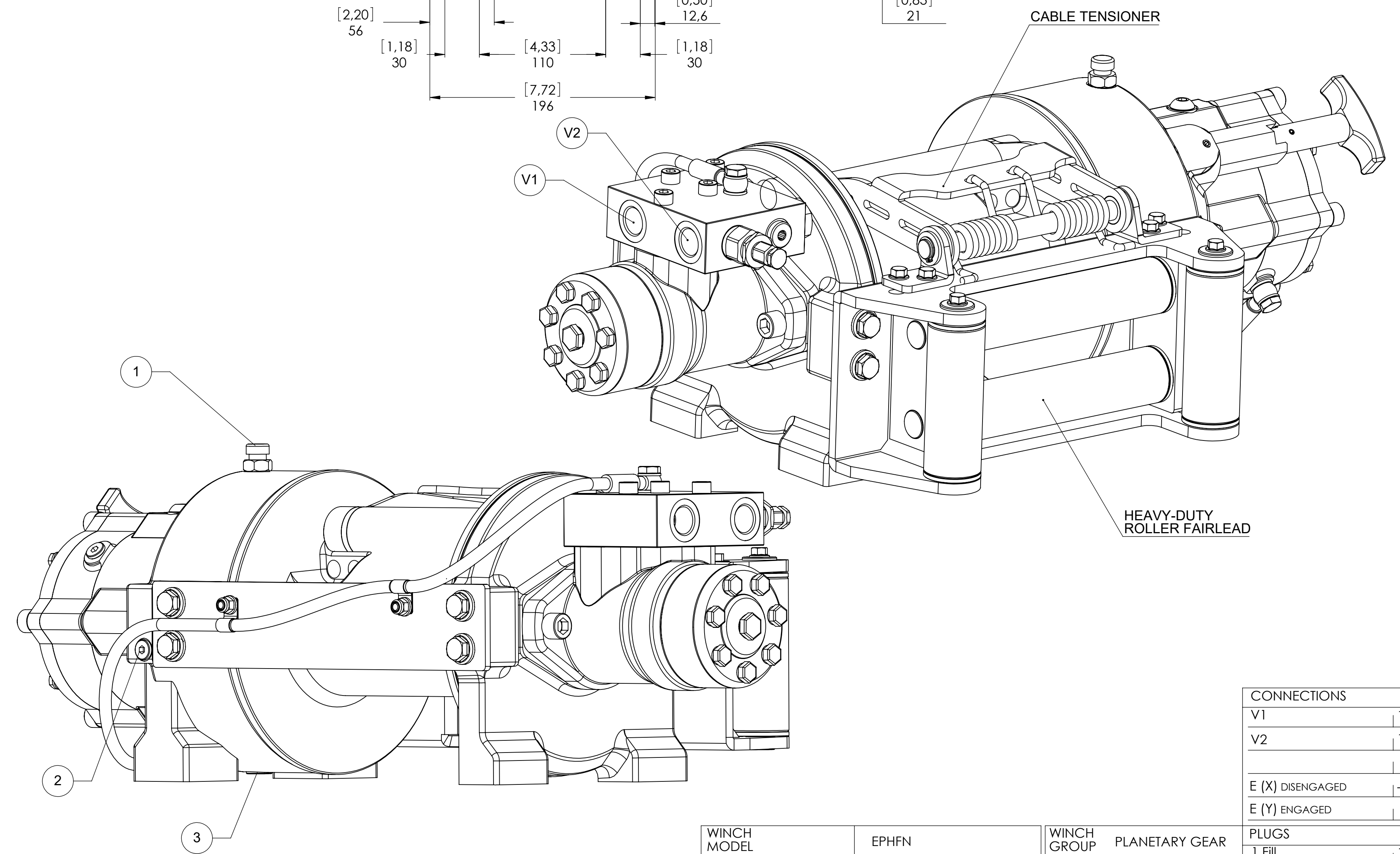
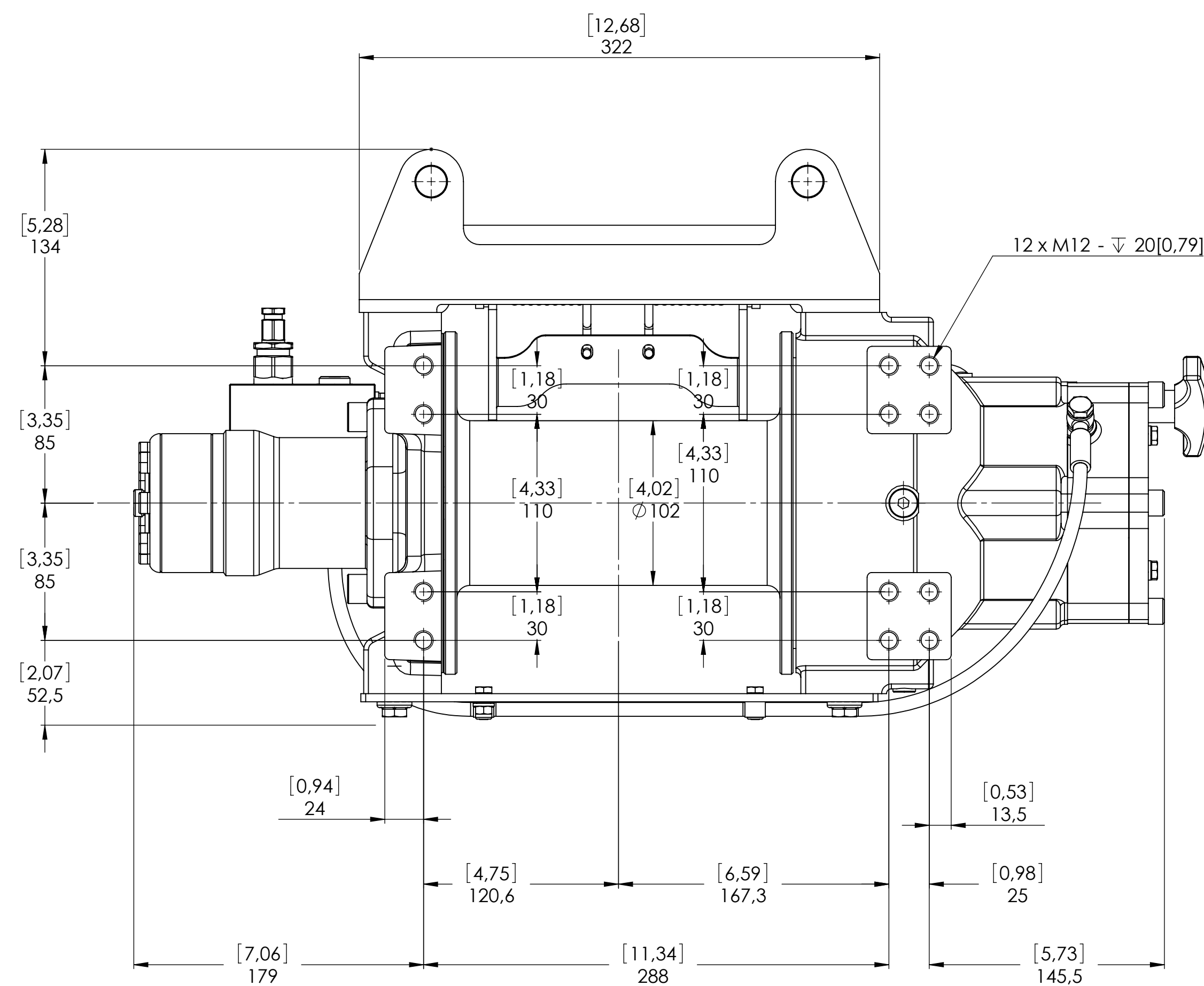
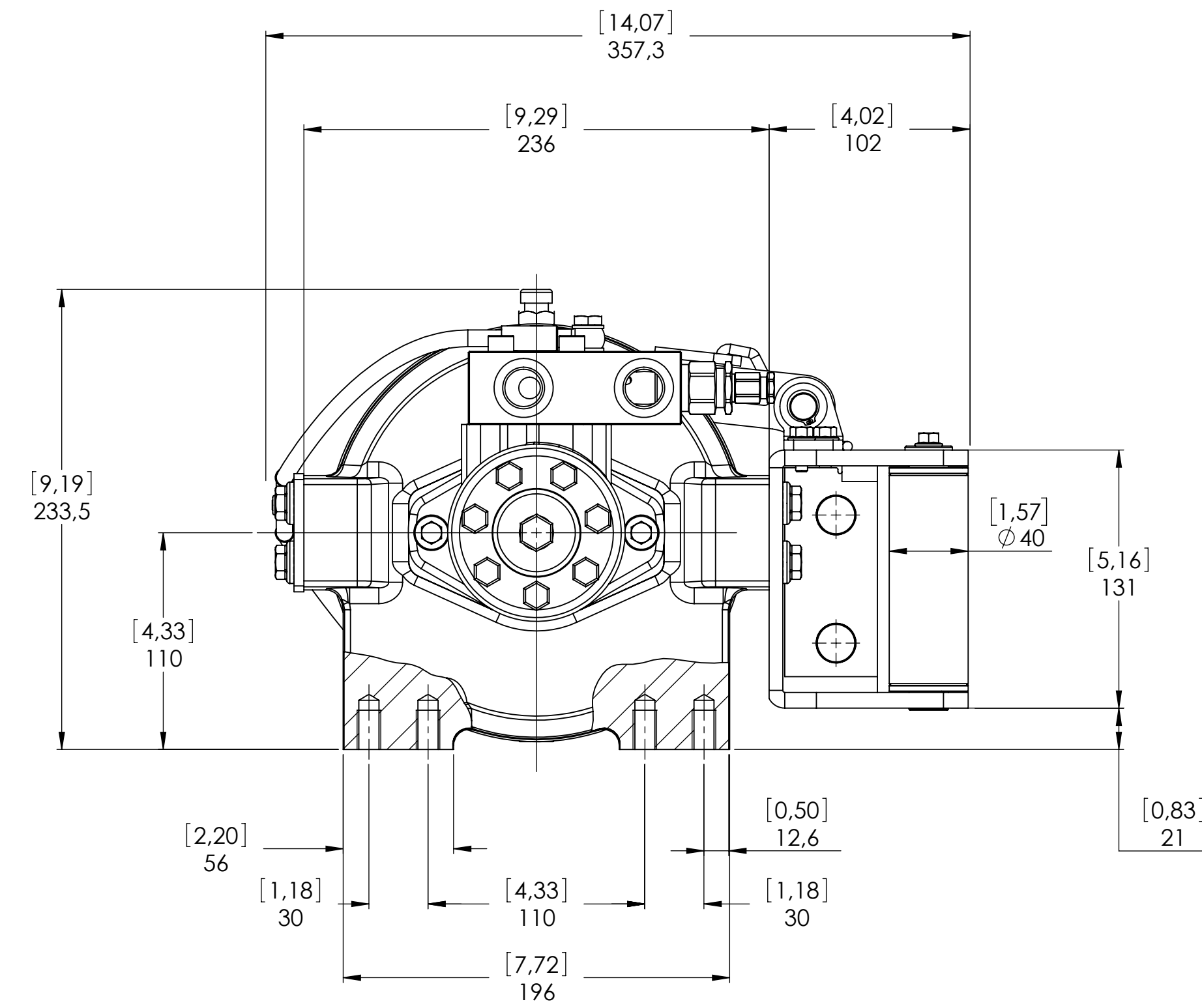
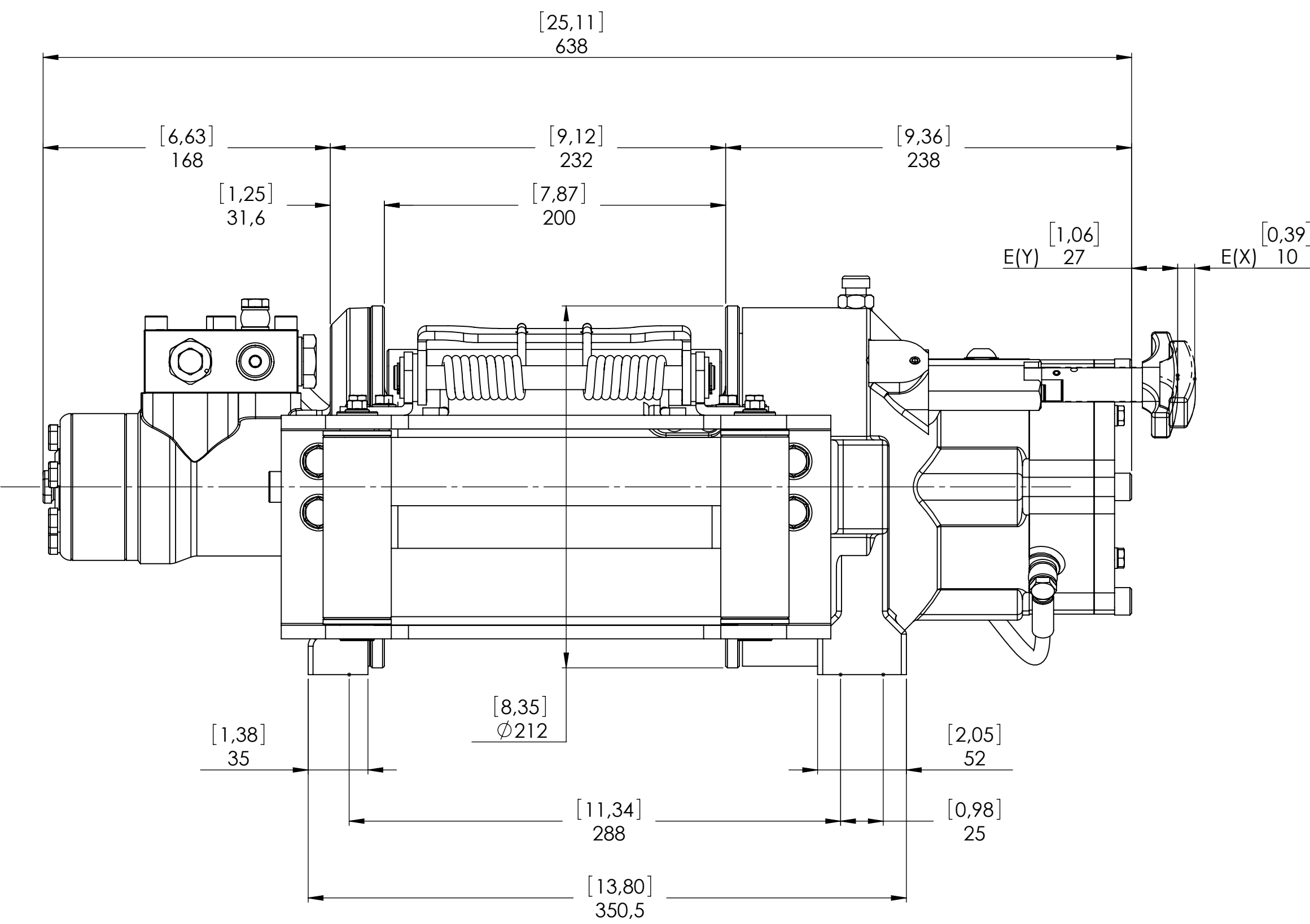
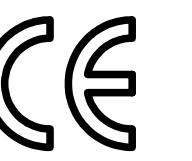


Machinery Directive 2006/42/CE
EN 14492-1

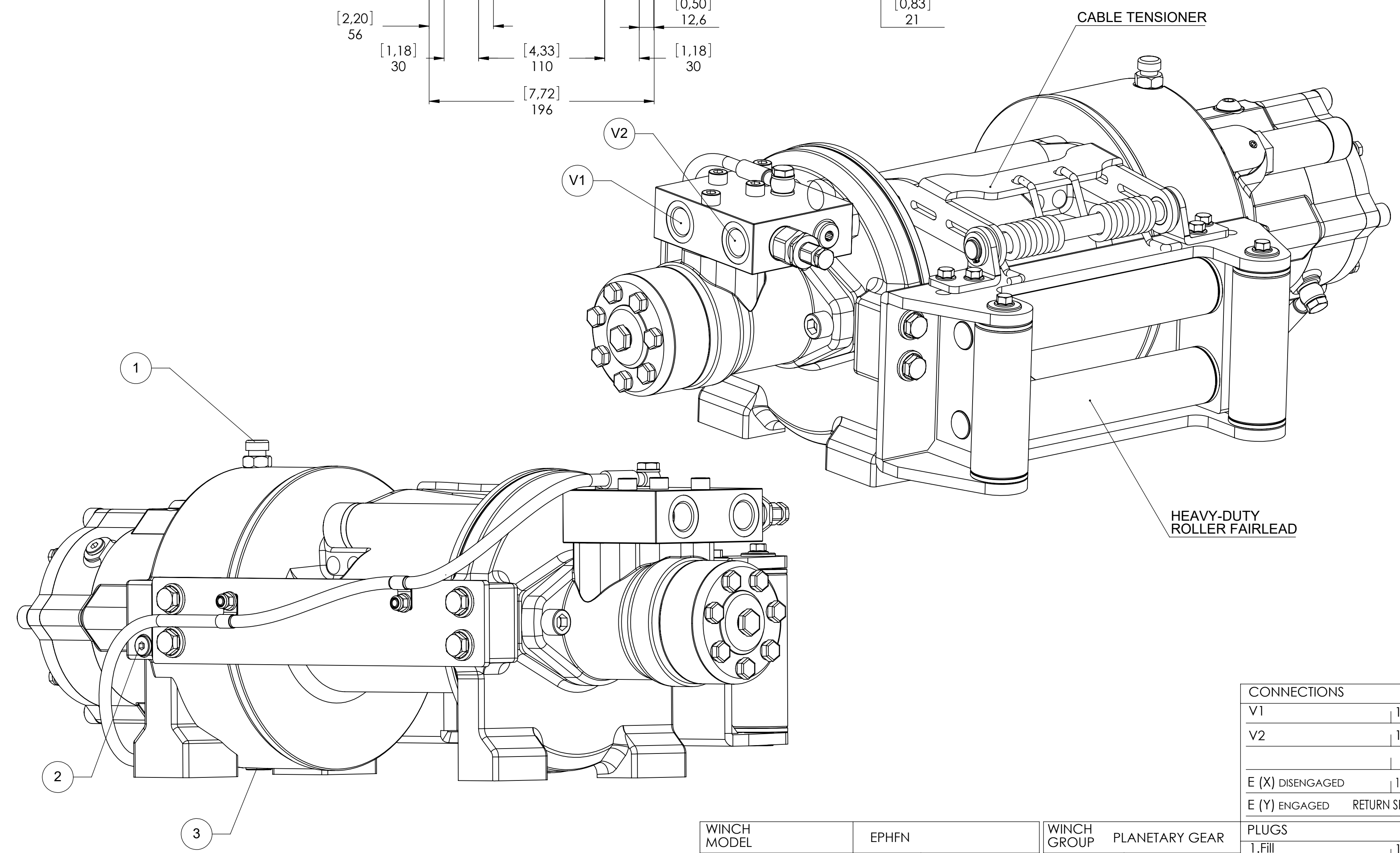
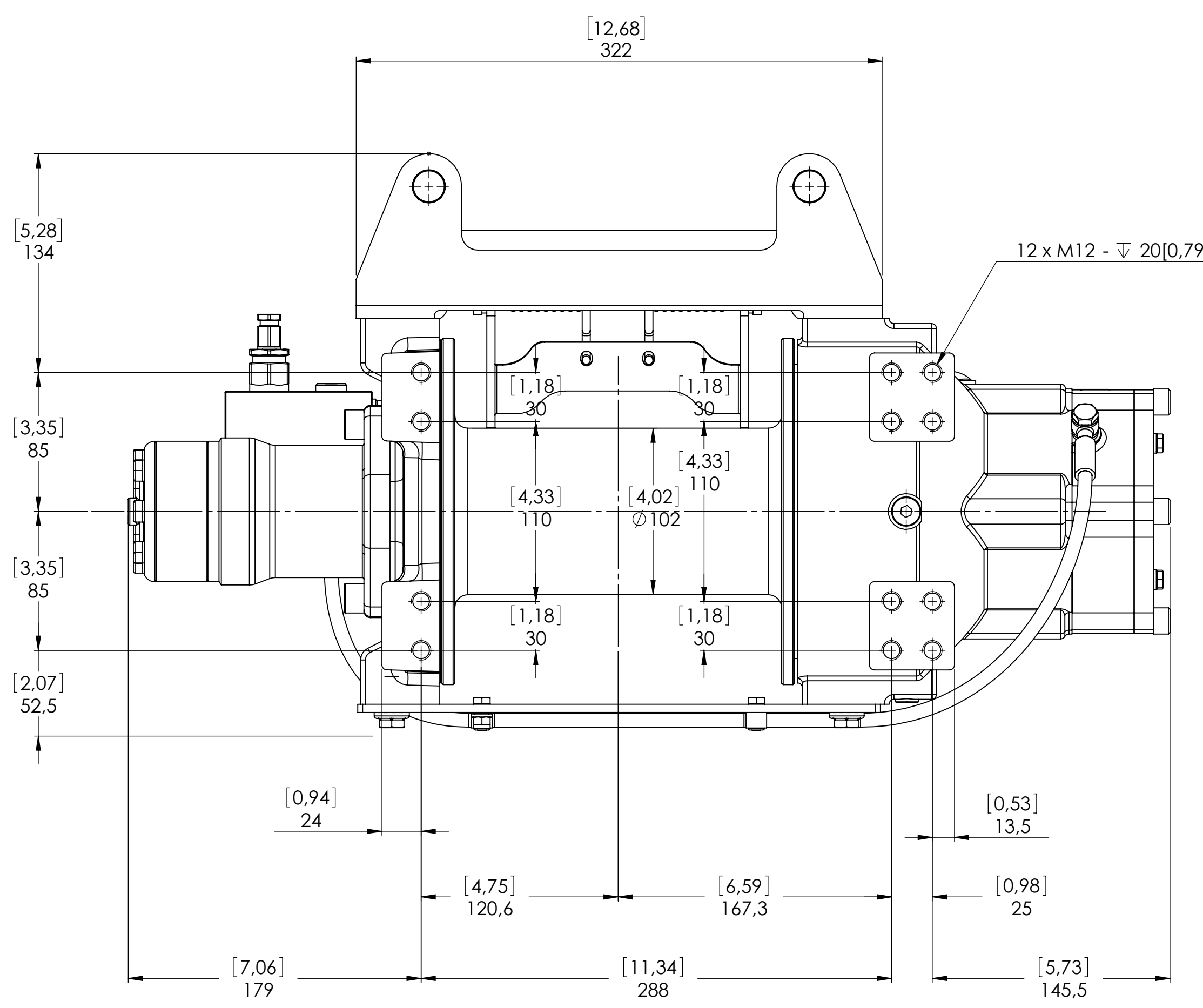
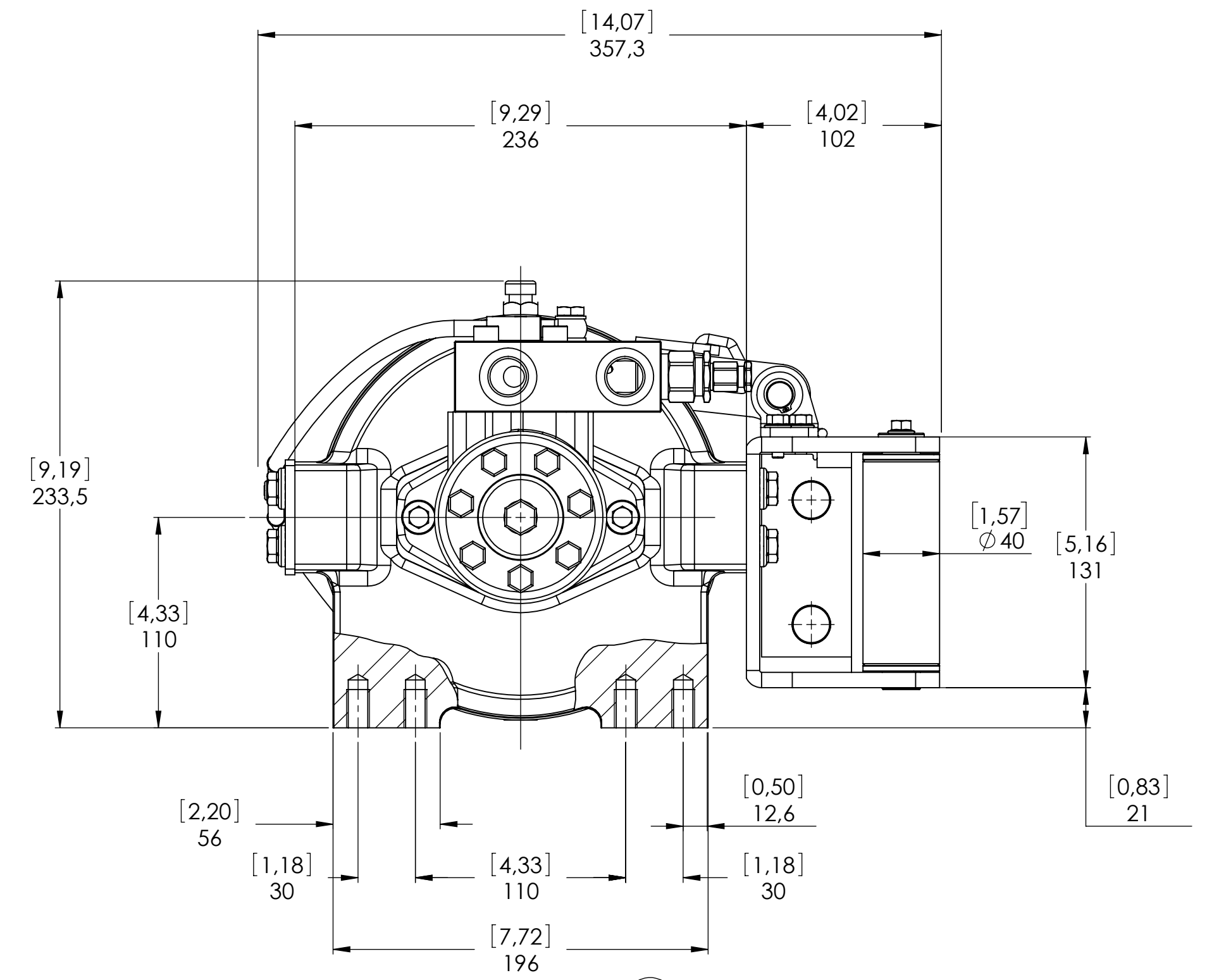
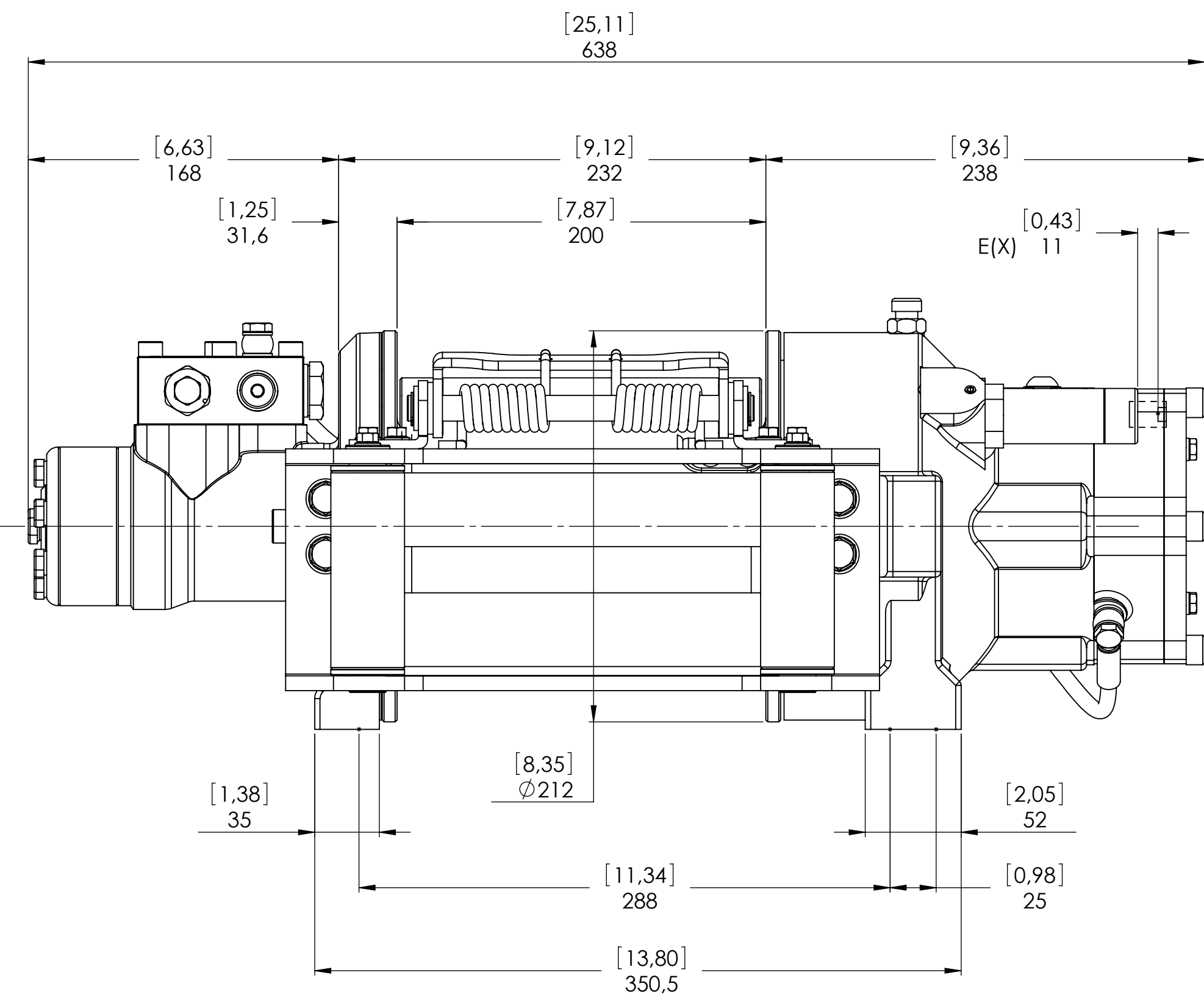


CONNECTIONS	
V1	1/2"
V2	1/2"
E (X) DISENGAGED	----
E (Y) ENGAGED	----

WINCH MODEL	EPHFN	WINCH GROUP	PLANETARY GEAR	PLUGS
Pulling capacity (Kgs.)	4500	Date	Modification	1.Fill 1/4"
Max.Oil flow	60 Lt./Min.			2.Level 1/8"
Speed Line - first layer	11,7 Mt./Min.	DANGEROUS: Do not use winch to lift support or transport personnel.		3.Drain 1/4"
Speed Line - top layer	20,8 Mt./Min.			
				SCALE 1: 2.5
				WEIGHTS
				Winch 43 Kgs.
				Heavy-duty Roller fairlead 8,7 Kgs.
				Rope tensioner 1,9 Kgs.
 Funo - Bologna (Italy) www.vimeindustrial.com				
The Quality is Transparent		Drum clutch	Manual	
VIME Industrial reserves the right to improve its products through changes in designed or materials as it may seem desirable without notice.				DATE 12/04/2016
				COD. EPH/CFN45D315GPV



Machinery Directive 2006/42/CE
EN 14492-1



CONNECTIONS	
V1	1/2"
V2	1/2"
E (X) DISENGAGED	1/8"
E (Y) ENGAGED	RETURN SPRING

WINCH MODEL	EPHFN	WINCH GROUP	PLANETARY GEAR
Pulling capacity (Kgs.)	4500	Date	Modification
Max.Oil flow	60 Lt./Min.	⚠ DANGEROUS: Do not use winch to lift support or transport personnel.	
Speed Line - first layer	11,7 Mt./Min.		
Speed Line - top layer	20,8 Mt./Min.	SCALE 1: 2.5	
 Funo - Bologna (Italy) www.vimeindustrial.com		Gear ratio	5,3 : 1
		Orbital hydr. motor	315 cc
		Working pressure	150 Bar
		Drum size	200 mm
The Quality is Transparent		Drum clutch	Air-operated
		DATE 12/04/2016	

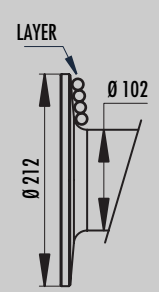
WEIGHTS	
Winch	43 Kgs.
Heavy-duty Roller fairlead	8,7 Kgs.
Rope tensioner	1,9 Kgs.
COD. EPH/CFN45D315AGPV	

1.4.6 EPH/C 4500 FN WINCH TECHNICAL DATA

RATIO	WIRE ROPE SIZE [MM]	LAYER	LINE PULL [KG]
1/5,3	11*	1	4.500
		2	3.767
		3	3.239
		4	2.841
		5	2.530

OIL SUPPLY [LT/MIN]	DRUM REVOLUTION [RPM]	LINE SPEED [MT/MIN]				
		1	2	3	4	5
40	19,9	7,1	8,4	9,8	11,2	12,5
50	27,4	9,7	11,6	13,5	15,4	17,3
60	32,9	11,7	14,0	16,2	18,5	20,8

DRUM EPH/C 4500 FN = 200 MM



LAYER	DRUM DIAMETER		WIRE ROPE ON LAYER [MT]		WIRE ROPE QUANTITY [MT]	
	Ø MM		11 MM	00 MM	11 MM	00 MM
5	201	-	10,8	-	42,4	-
4	179	-	9,7	-	31,5	-
3	157	-	8,5	-	21,9	-
2	135	-	7,3	-	13,4	-
1	113	-	6,1	-	6,1	-
0	102	-	-	-	-	-

WIRE ROPE CAPACITY [MT]		MAX. WIRE ROPE CAPACITY EN 14492-1 [MT]		MAX. WIRE ROPE CAPACITY [MT]	
11 MM	00 MM	11 MM	00 MM	11 MM	00 MM
20	00	30**	00	40	00

DESCRIPTION	WEIGHTS
	KG.
WINCH (WITHOUT CABLE)	46,7
ACCESSORY : ROLLERFAILREAD	8,7
ACCESSORY : CABLE TENSIONER	1,9

NOTE

Specifications are subject to change without notification and without incurring obligation. Specifications in this publication are theoretical and may vary depending on hydraulic system, environment, etc.

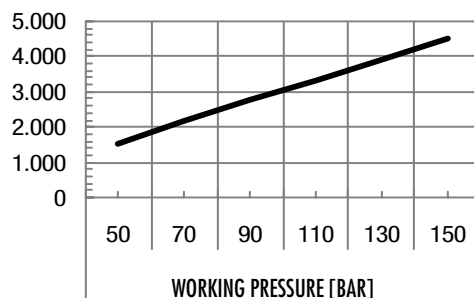
NOTE

*Wire rope size must be respected. Recommended wire rope min. tensile strength 2160 N/mm².
Wire rope minimum breaking load must be at least double of winch max. pulling capacity.

** Max. wire rope capacity according with EN 14492-1.

1.4.7 EPH/C 4500 FN WINCH PERFORMANCE CHARTS AT THE 1ST LAYER

LINE PULL-FIRST LAYER [KG]



LINE SPEED [M/MIN]

