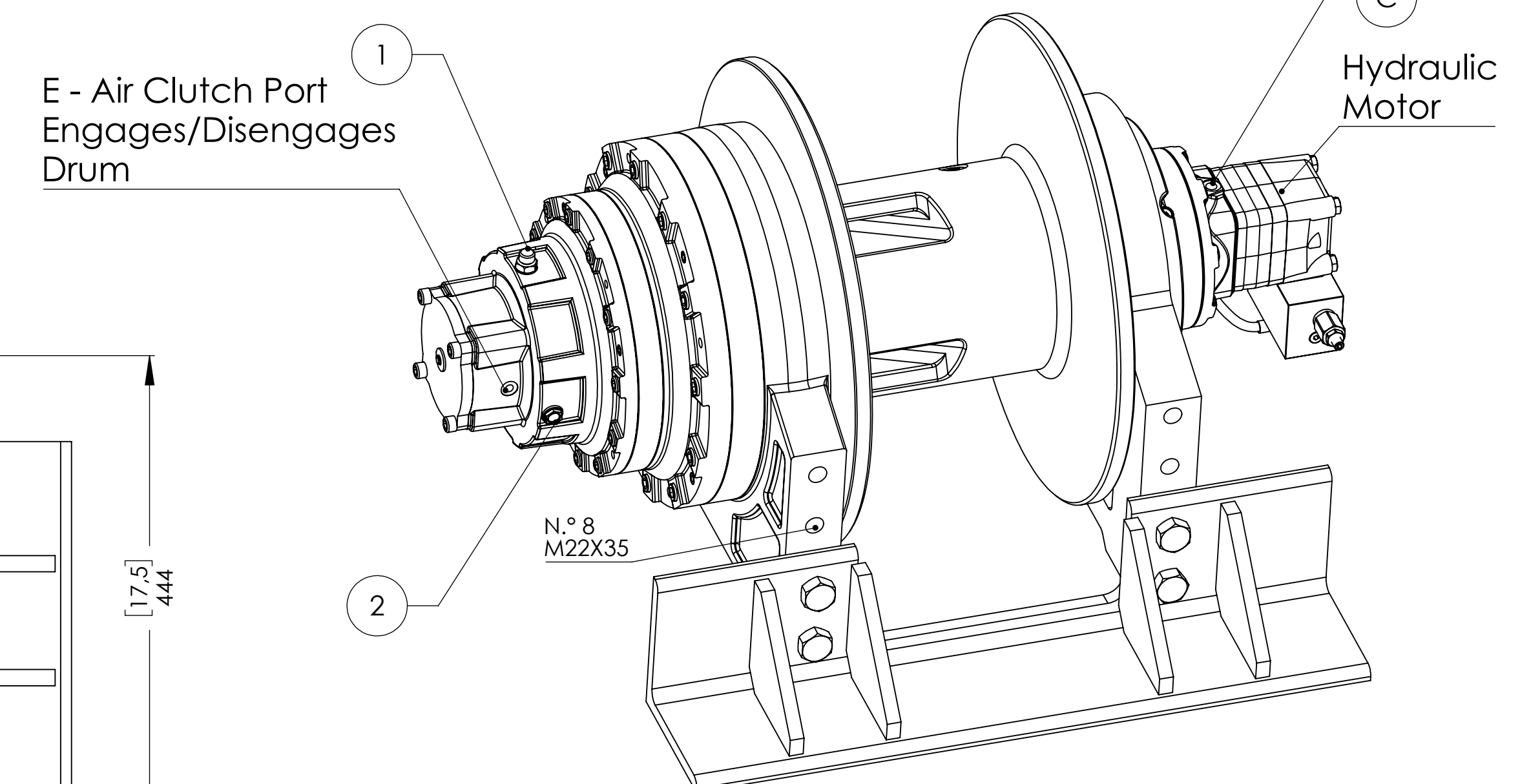
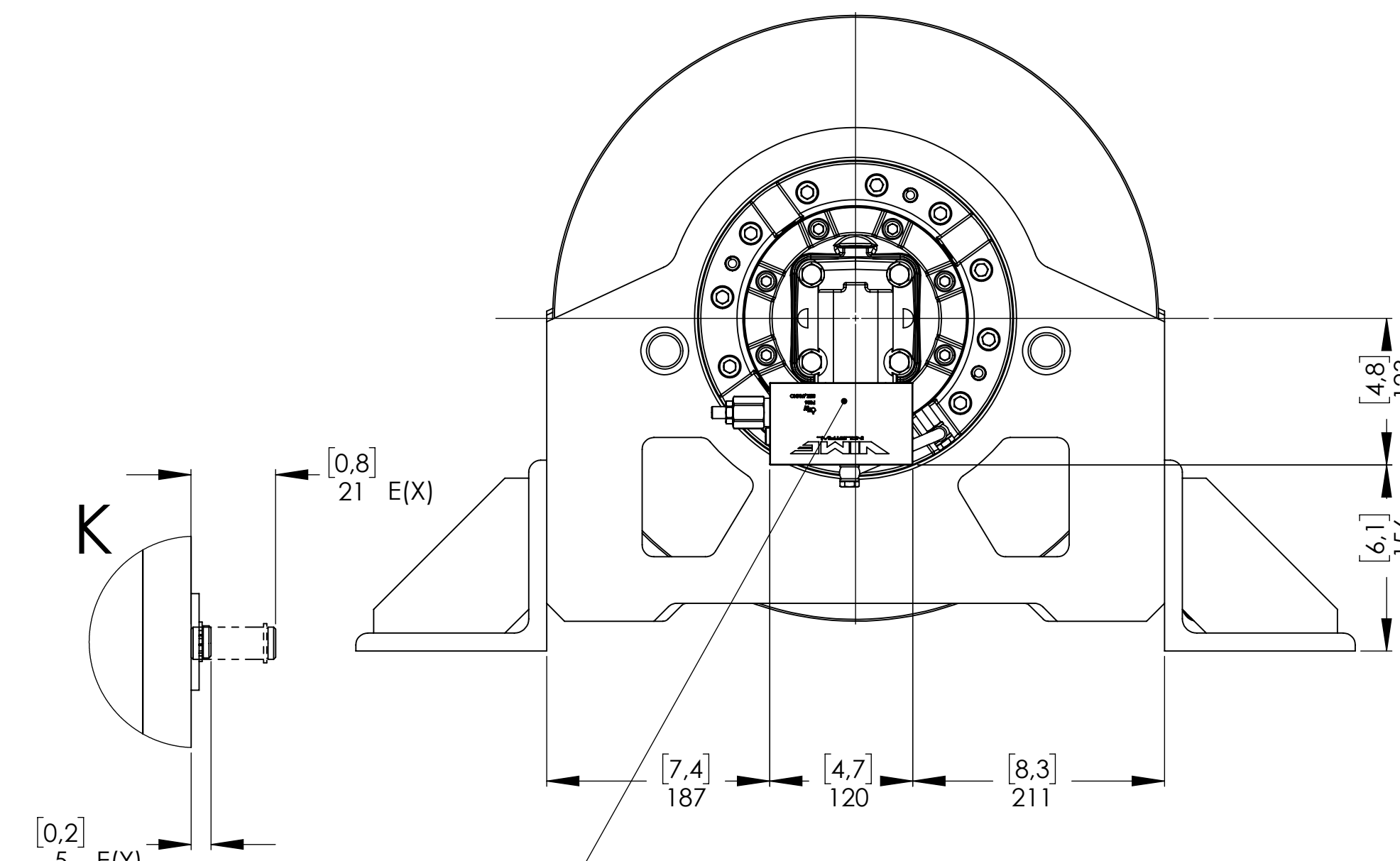
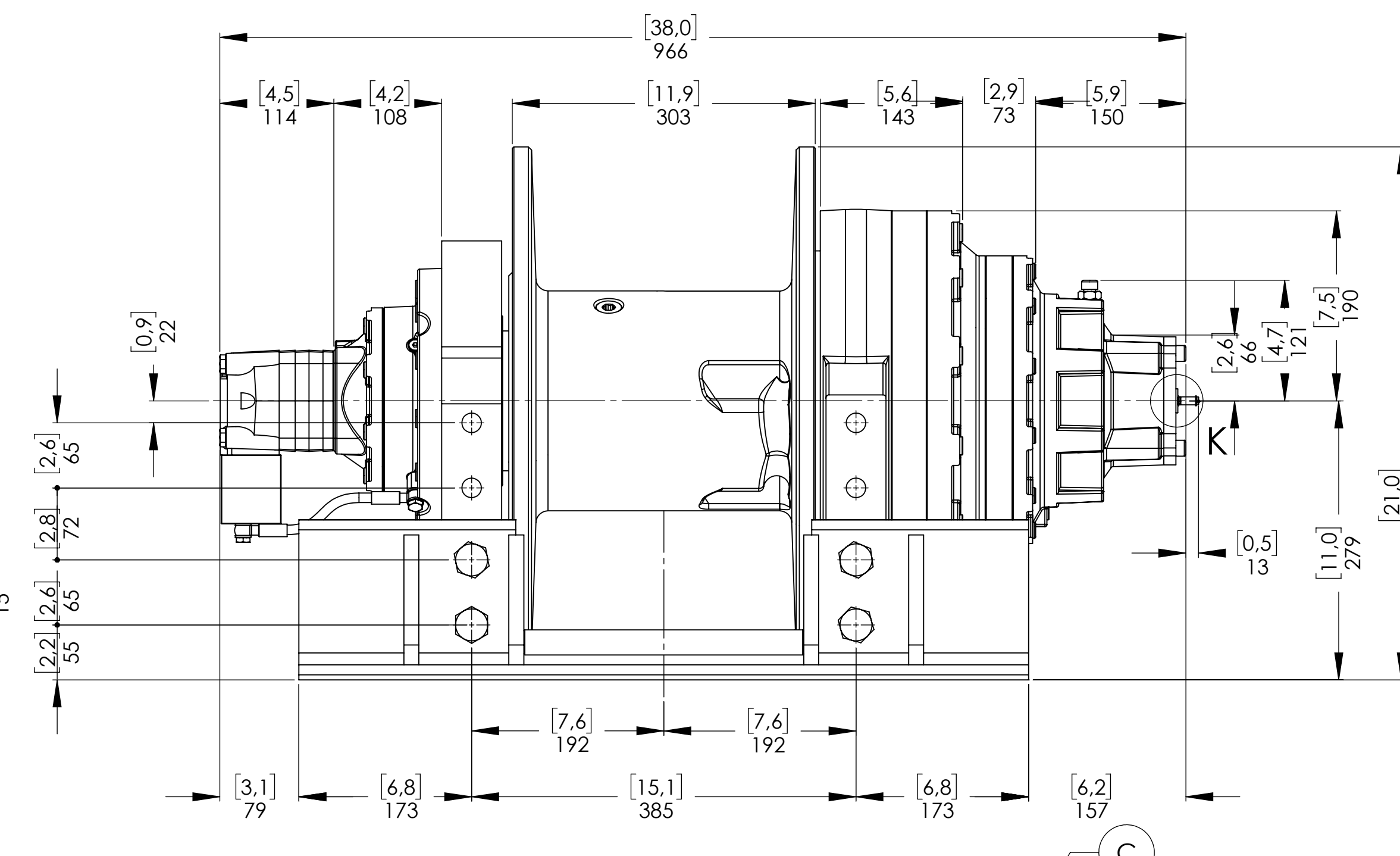
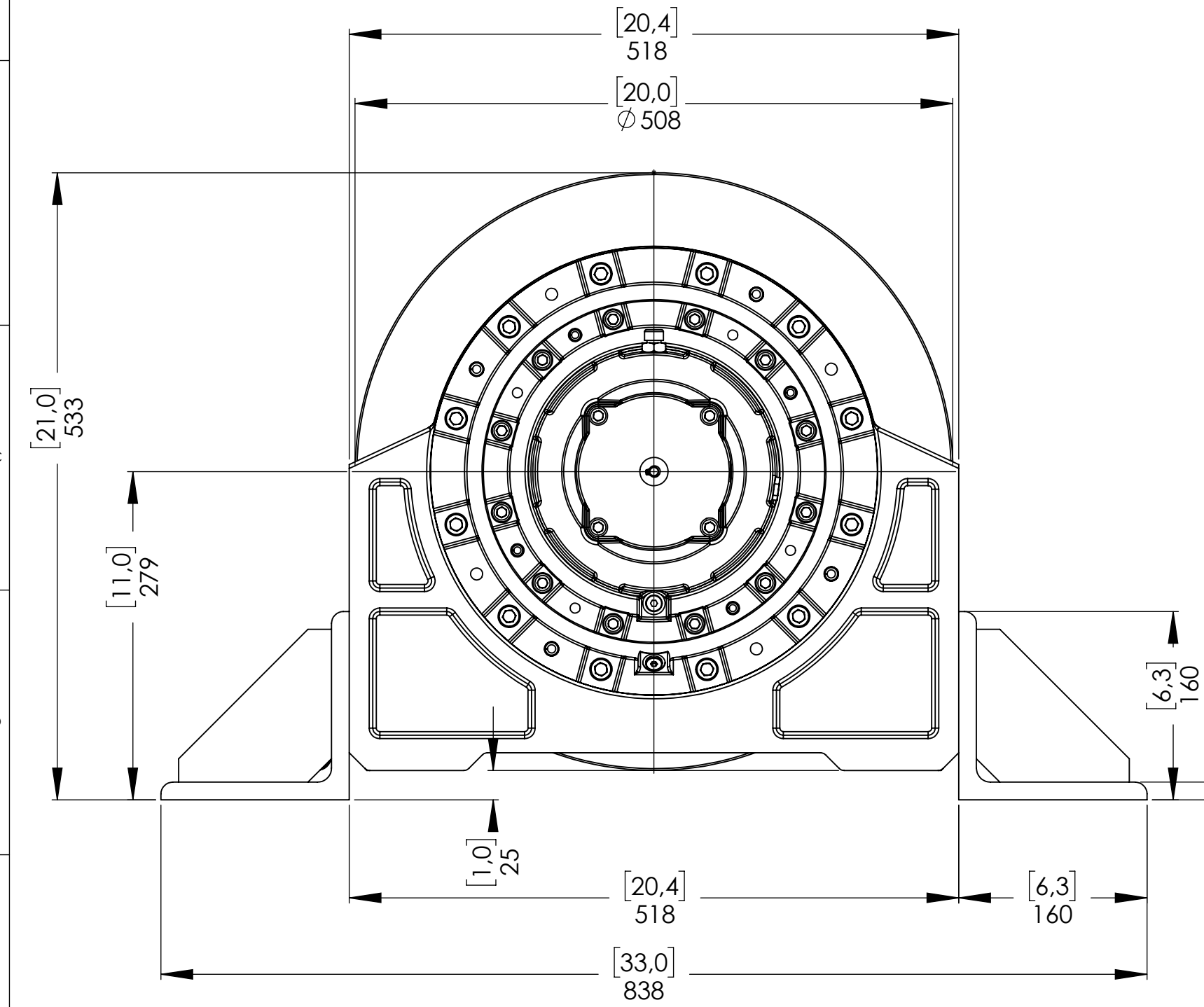
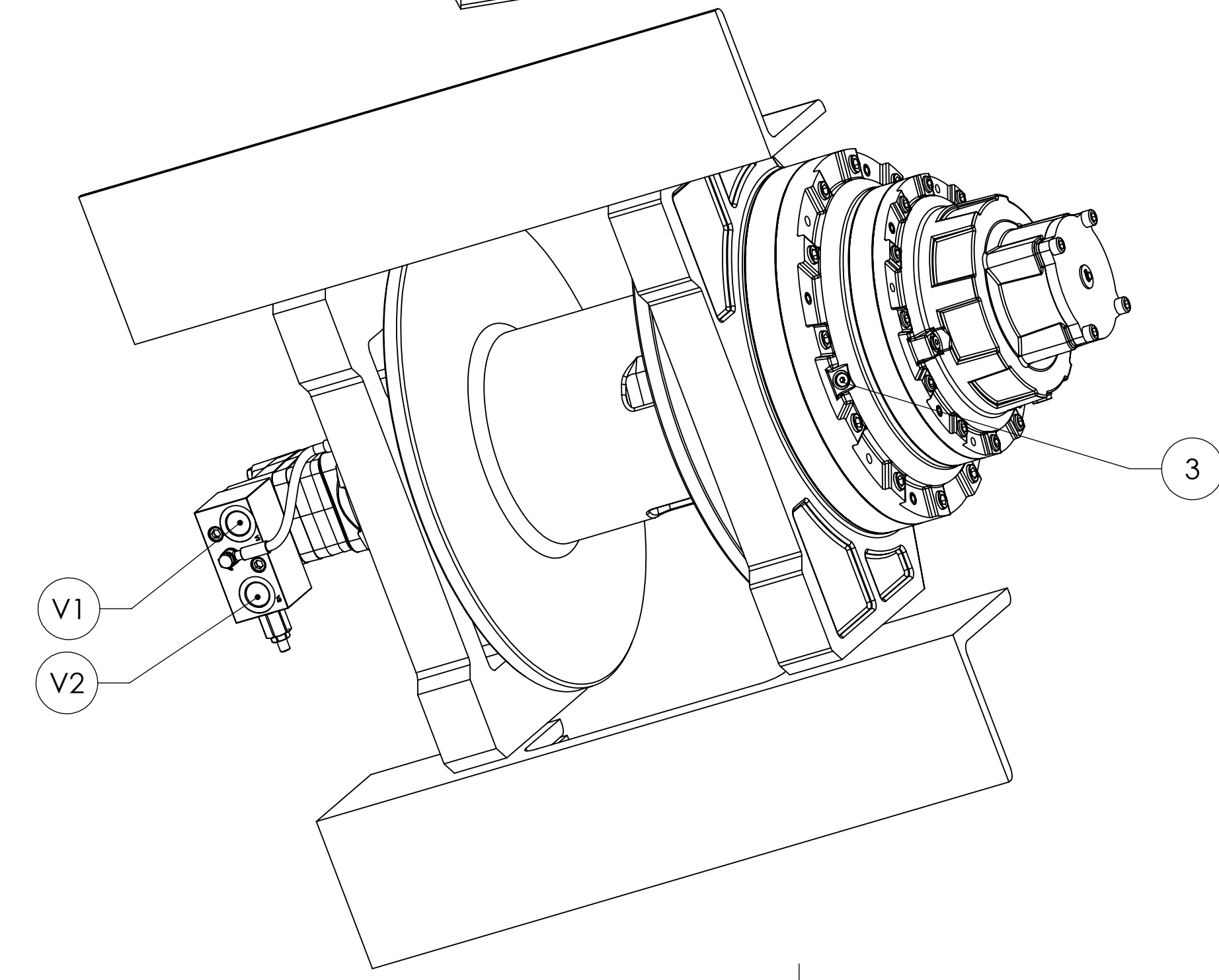
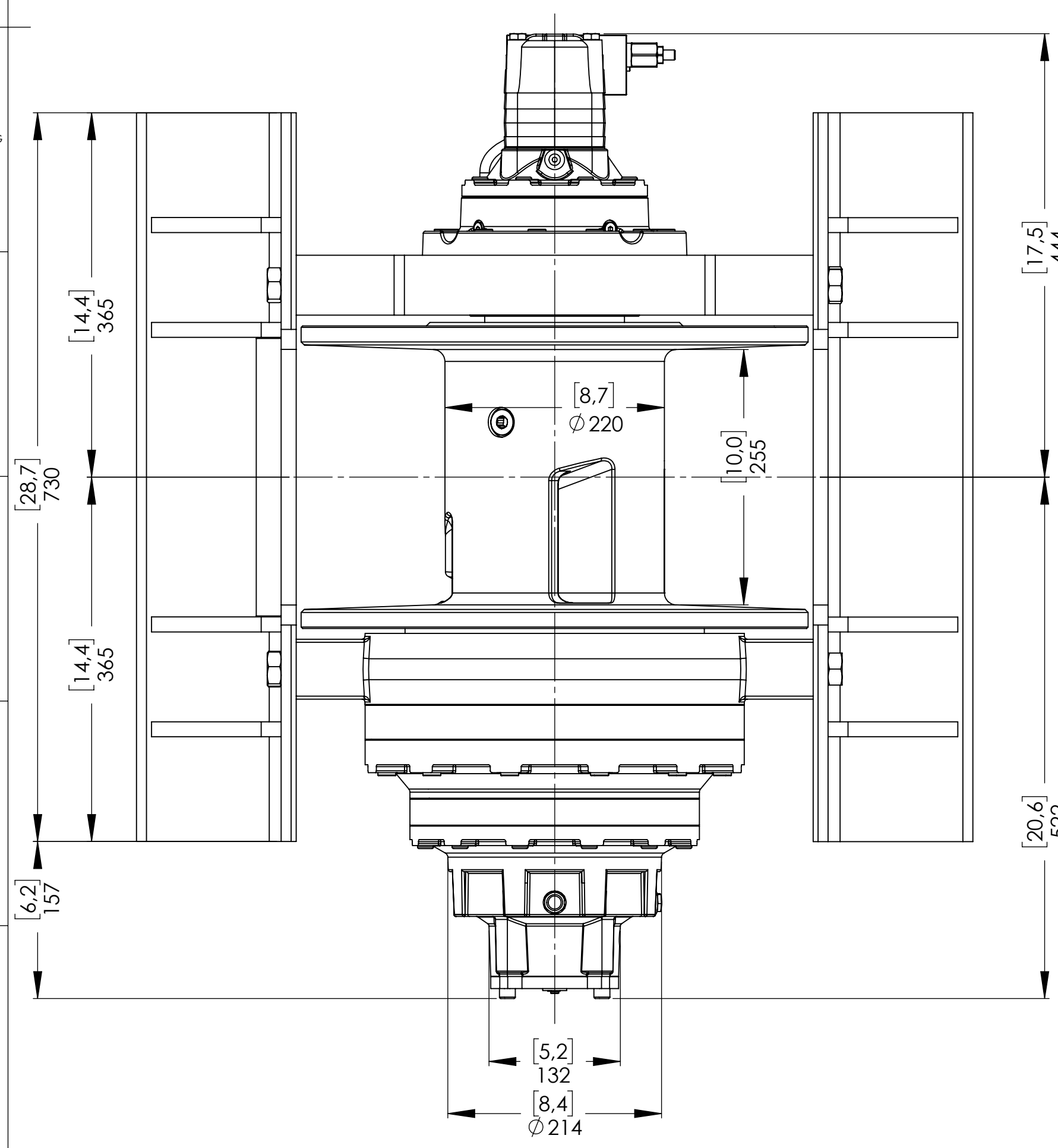
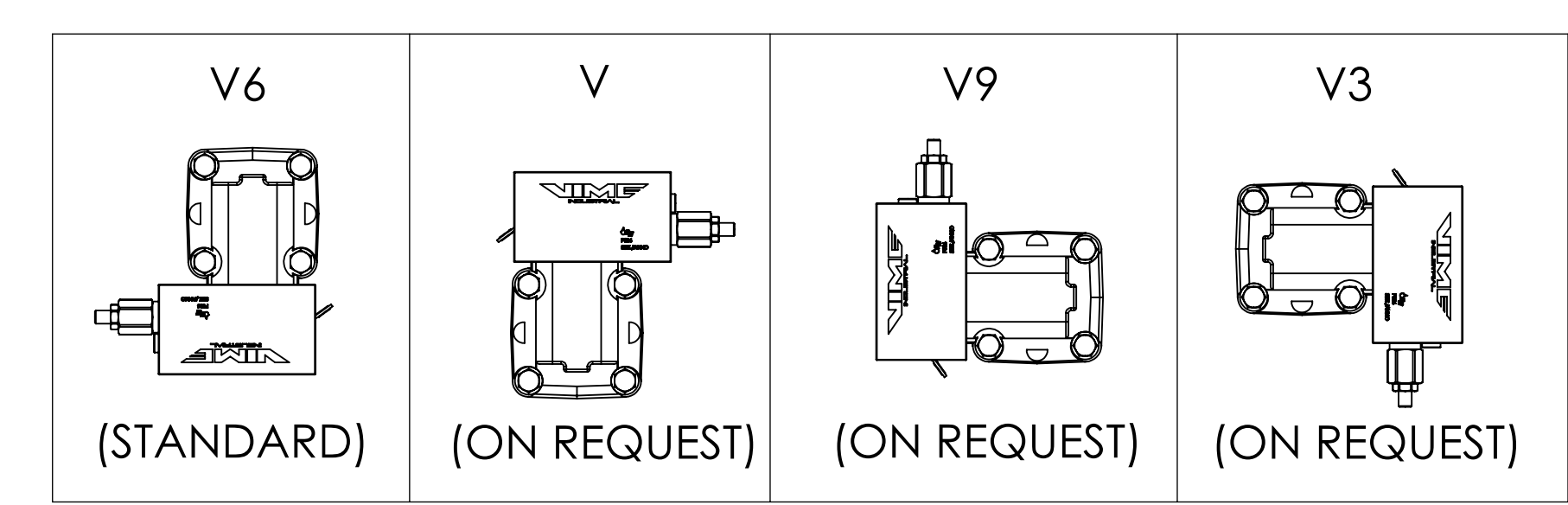


Machinery Directive 2006/42/CE
EN 14492-1



OVERCENTER VALVE POSITION*



WINCH ORDERING CODE	AIR CLUTCH (STANDARD)	MANUAL CLUTCH (ON REQUEST)	HEAVY DUTY ROLLER FAIRLEAD (ON REQUEST)	CABLE TENSIONER (ON REQUEST)	OVER CENTER VALVE POSITION* (STANDARD V6)
EPHCFN200U12EAV6U	X				X
EPHCFN200U12EAPV6U	X			X	X
EPHCFN200U12EAGV6U	X		X		X
EPHCFN200U12EAGPV6U	X		X	X	X
EPHCFN200U12EV6U		X			X
EPHCFN200U12EPV6U		X		X	X
EPHCFN200U12EGV6U		X	X		X
EPHCFN200U12EGPV6U		X	X	X	X

*AT THE MOMENT OF ORDER IS POSSIBLE REQUEST THE OVERCENTER VALVE PORTS ORIENTED ACCORDING TO THE LAY OUT ABOVE. IF NOT SPECIFIED, THE WINCH WILL BE SUPPLIED WITH THE OVERCENTER VALVE PORTS ORIENTED AS PER OUR STANDARD CONFIGURATION V6.

CONNECTIONS	
V1 OUT LET	G 3/4
V2 IN LET	G 3/4
C CASE DRAIN	G 1/4
E (X) DISENGAGED	G 1/8
E (Y) ENGAGED	RETURN SPRING

WINCH MODEL	EPHC 200 FN	WINCH GROUP	PLANETARY GEAR	PLUGS
Pulling capacity	20000 Kg	Date	Modification	1.Fill G 3/8
Max.Oil flow	75 Lt./Min.			2.Level G 3/8
Speed Line - first layer	4,5 Mt./Min.			3.Drain G 1/4
Speed Line - top layer	7,7 Mt./Min.	DANGEROUS: Do not use winch to lift support or transport personnel.		SCALE 1:4.5
 Funo - Bologna (Italy) www.vimeindustrial.com The Quality is Transparent		Gear ratio	1/97.23	WEIGHTS
		Orbital hydr. motor	125 cc	Winch (without oil) 435 Kg
		Working pressure	195 bar	Heavy-duty
		Drum size	255 mm	Roller fairlead -----
		Drum clutch	Air-operated	Cable tensioner -----
		VIME Industrial : reserves the right to improve its products through changes in designed or materials as if may seem desirable without notice		COD. EPHCFN200U12EAV6U
		DATA 21/04/2022		

1.4.13 EPHC 200 FN CE TECHNICAL DATA

FEATURES EPHC 200 FN CE (125 cc.)	
LINE PULL FIRST LAYER	20.000 KGF
LINE SPEED FIRST LAYER	4,5 MT/MIN.
MAX. WORKING PRESSURE	195 BAR
MAX. OIL SUPPLY	75 LT/MIN
MIN. OIL SUPPLY	20 LT/MIN
WIRE ROPE SIZE (EN 14492-1)	*22/24 MM
WIRE ROPE MINIMUM BREAKING ROPE (EN 14492-1)	20.000 KG
MAX. WIRE ROPE CAPACITY (EN 14492-1)	**52/50 MT

WIRE ROPE QUANTITY ON LAYER (DRUM LENGTH EPHC FN= 255 MM)							
LAYER	LAYER	DRUM DIAMETER [MM]		WIRE ROPE ON LAYER [MT]		WIRE ROPE QUANTITY [MT]	
		22 MM	24 MM	22 MM	24 MM	22 MM	24 MM
		6	-	-	-	-	-
5	418	436	13,9	13,2	54,9	51,4	
4	374	388	12,4	11,7	41,0	38,2	
3	330	340	11,0	10,3	28,5	26,5	
2	286	292	9,5	8,8	17,6	16,2	
1	242	244	8,1	7,4	8,1	7,4	
0	220	220	-	-	-	-	

NOTE 

Specifications are subject to change without notification and without incurring obligation. Specifications in this publication are theoretical and may vary depending on hydraulic system, environment, etc.

*Wire rope size must be respected. Recommended wire rope min. tensile strength 2160 N/mm². Wire rope minimum breaking load must be at least double of winch max. pulling capacity.

** Max. wire rope capacity according with EN 14492-1.

LINE SPEED [MT/MIN]							
	OIL SUPPLY [LT/MIN]	DRUM REVOLUTION [RPM]	LINE SPEED PER LAYER [MT/MIN]				
			1	2	3	4	5
ROPE 22 MM	40	2,99	2,3	2,7	3,1	3,5	3,9
	60	4,64	3,5	4,2	4,8	5,5	6,1
	75	5,87	4,5	5,3	6,1	6,9	7,7
ROPE 24 MM	40	2,99	2,3	2,7	3,2	3,6	4,1
	60	4,64	3,6	4,3	5,0	5,7	6,4
	75	5,87	4,5	5,4	6,3	7,2	8,0

LINE PULL [KGF]			
	RATIO	LINE PULL [KGF]	
ROPE 22 MM	1/97,23	1	20.000
		2	16,920
		3	14,660
		4	12,940
		5	11,580
ROPE 24 MM	1/97,23	1	20.000
		2	16.700
		3	14.350
		4	12.570
		5	11.190

WEIGHT [KG]	
WINCH (WITHOUT CABLE)	420
ACCESSORY : ROLLERFAIRLEAD	-
ACCESSORY : CABLE TENSIONER	11