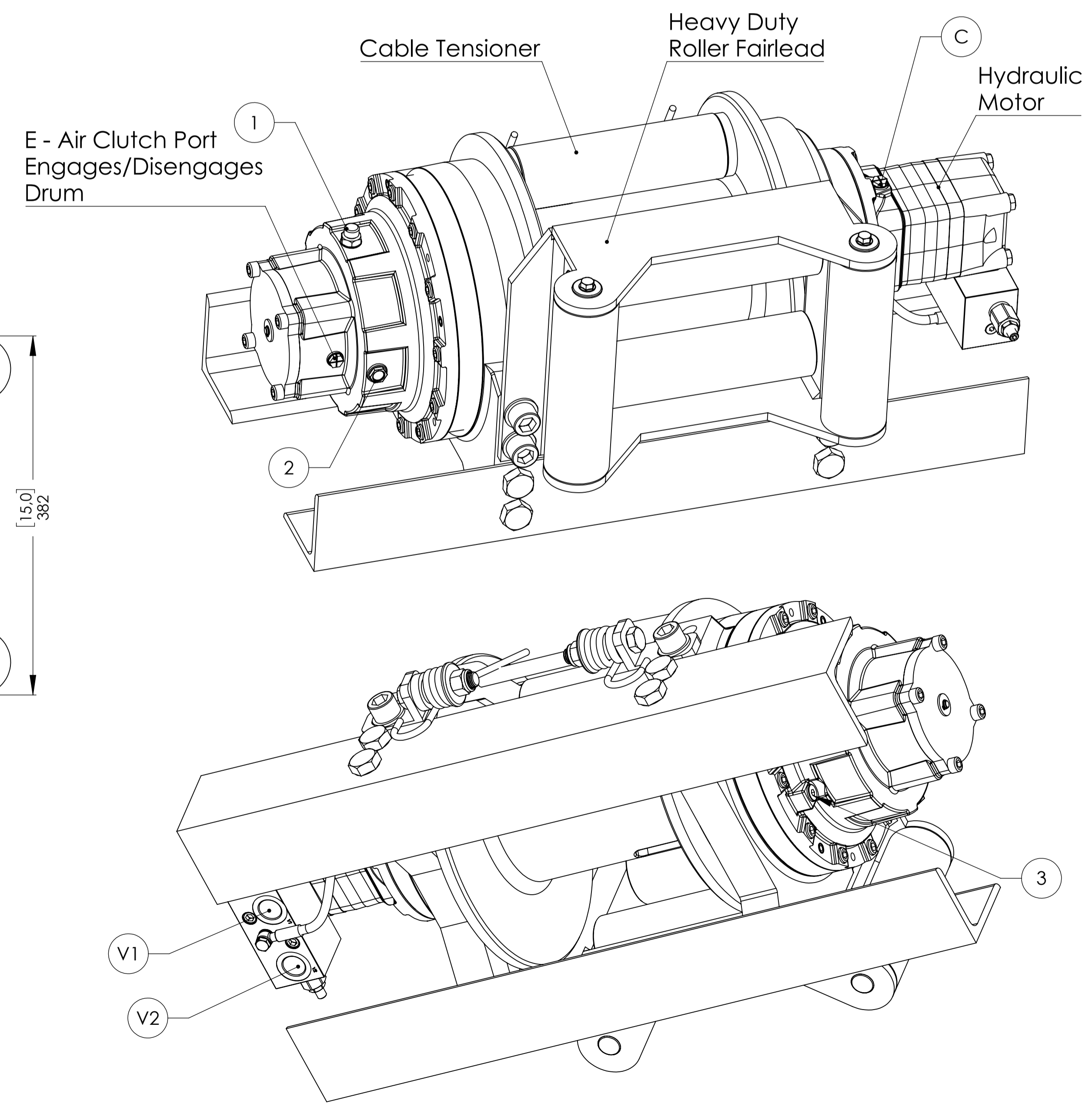
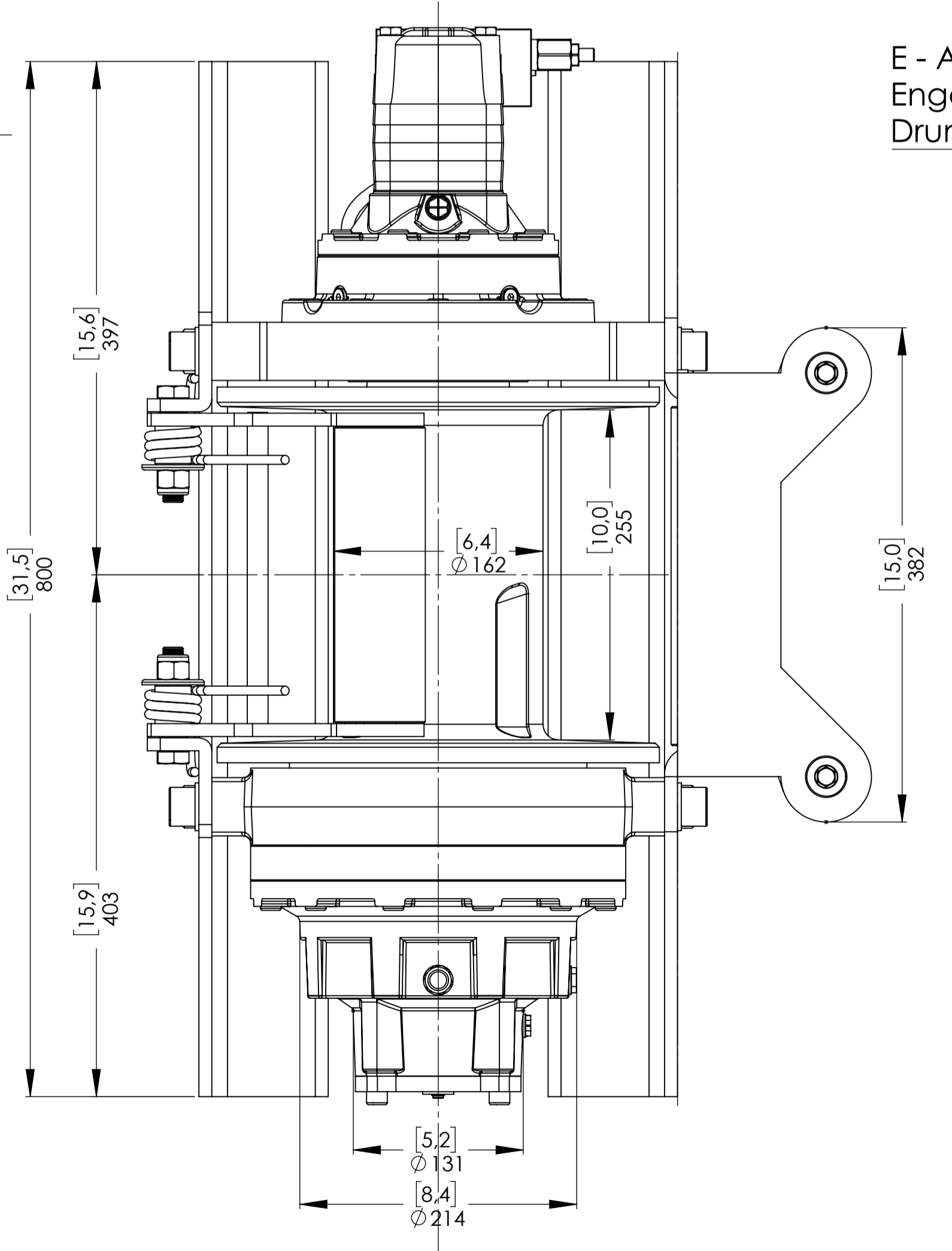
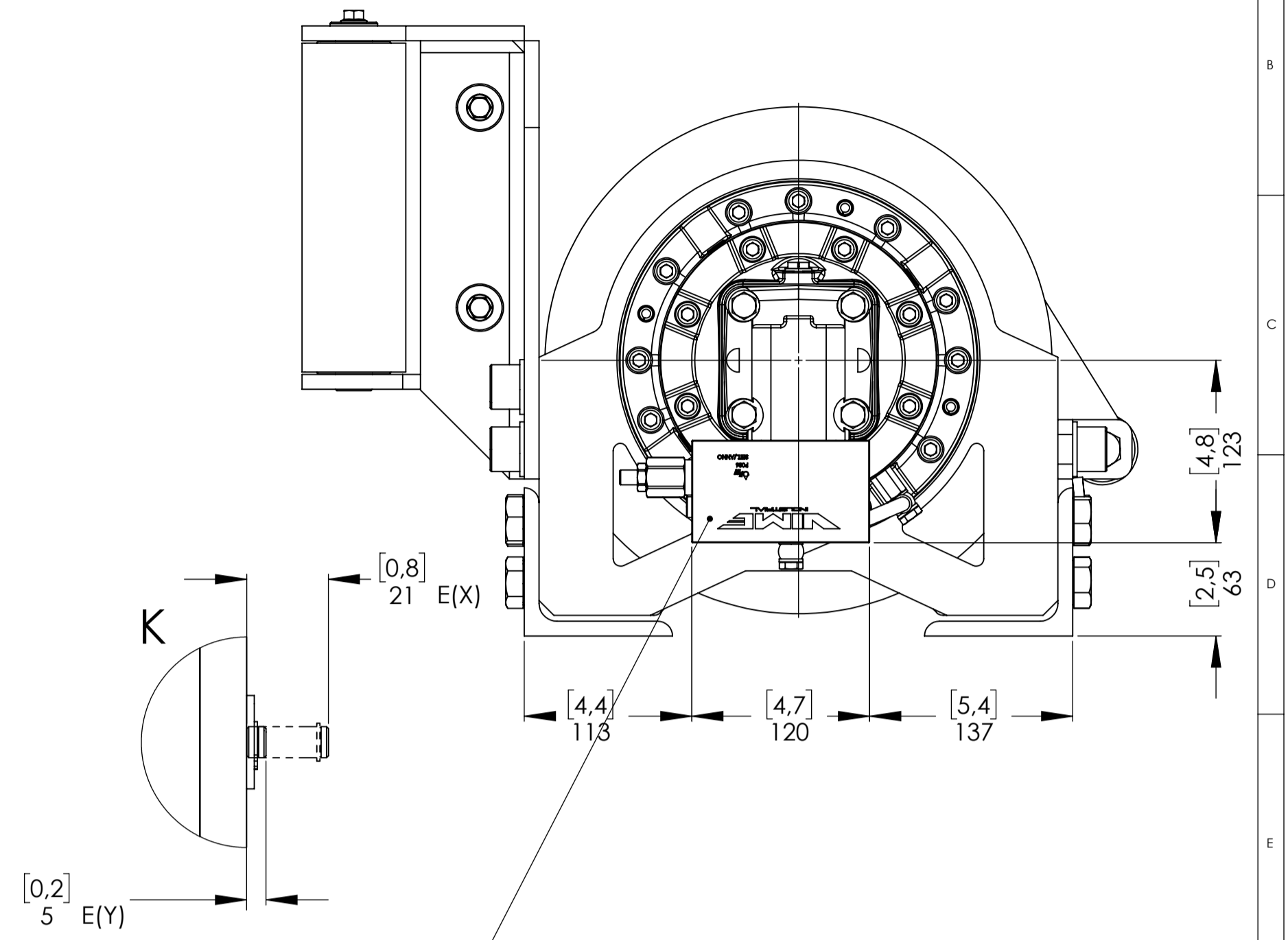
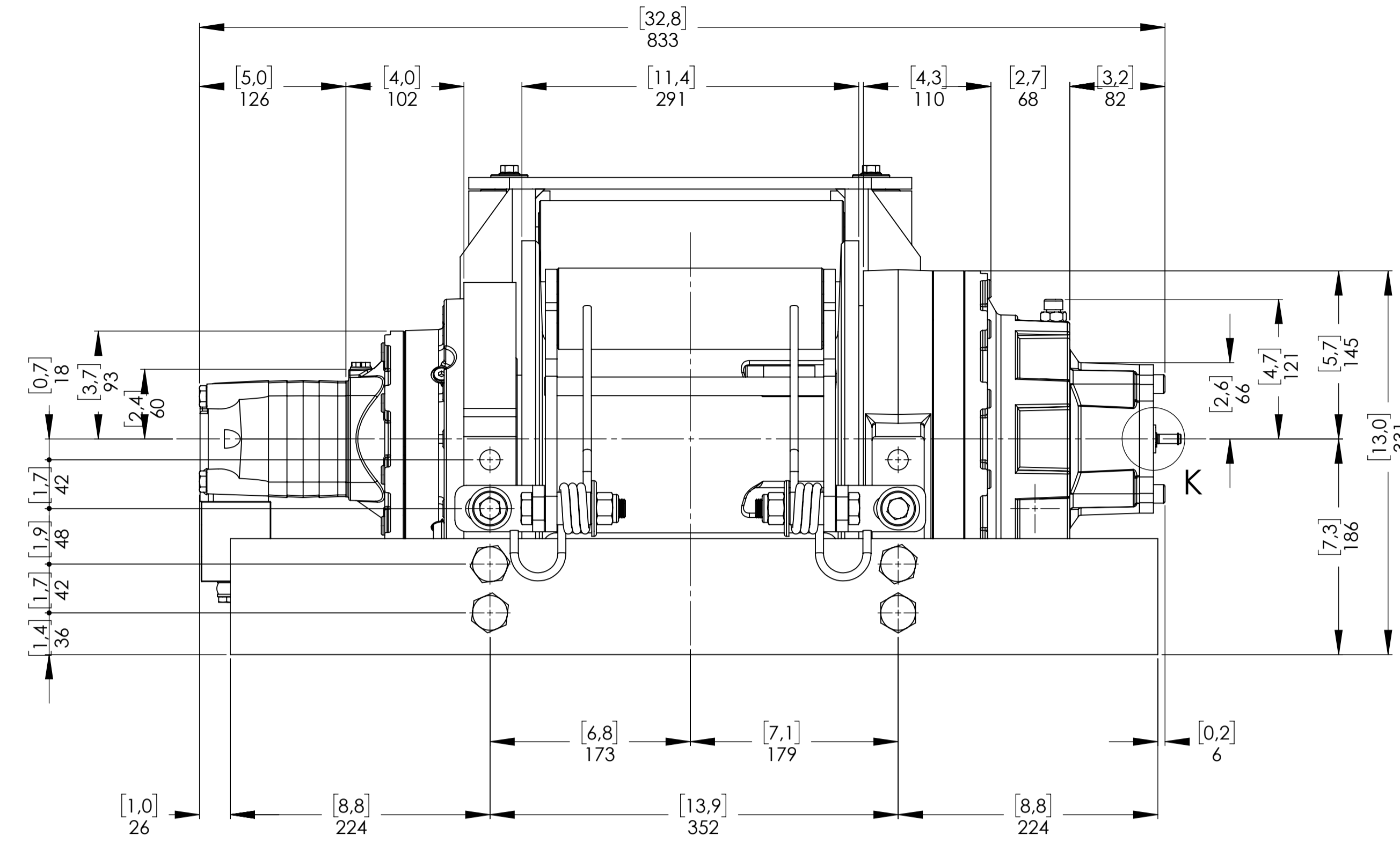
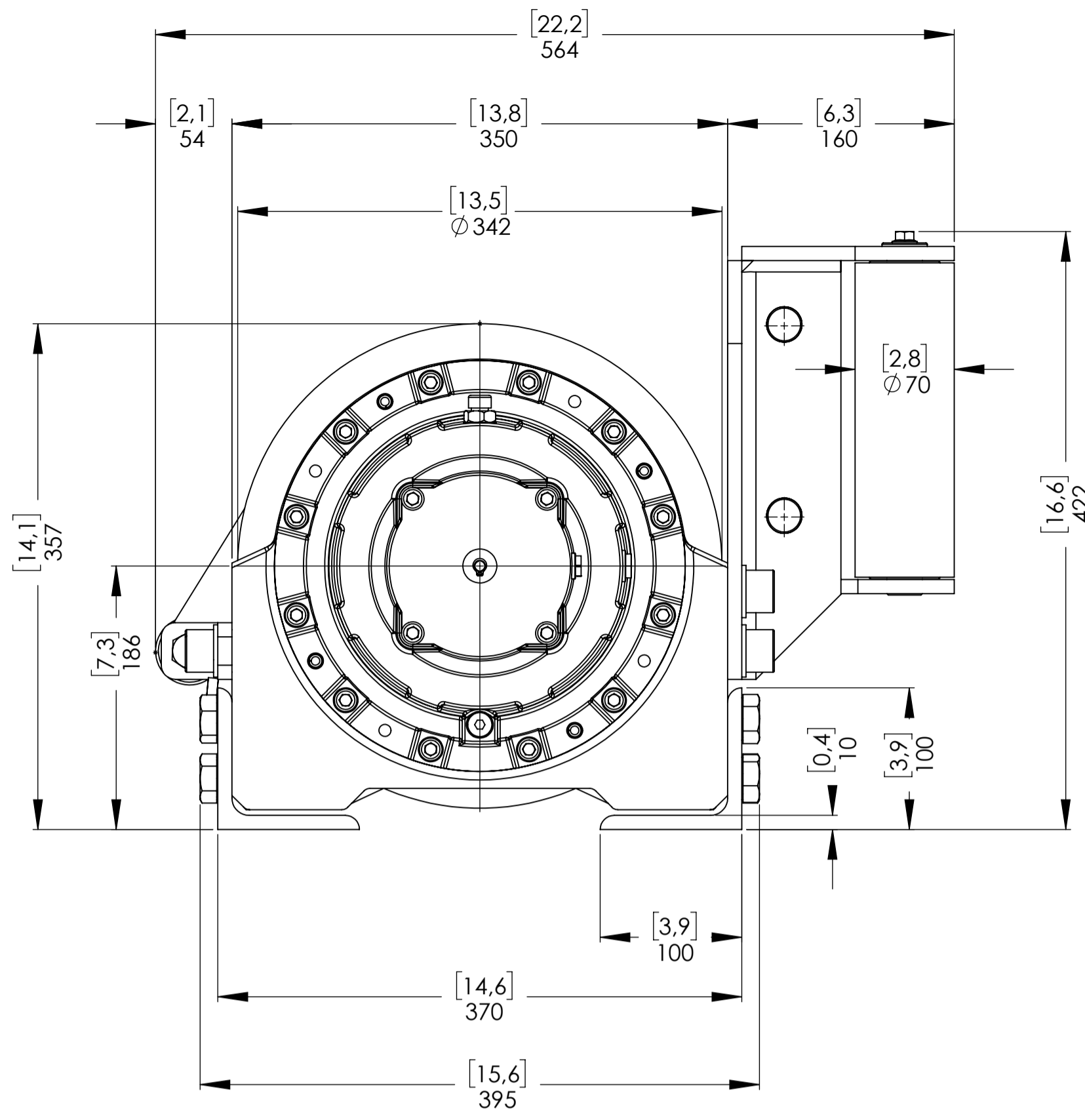
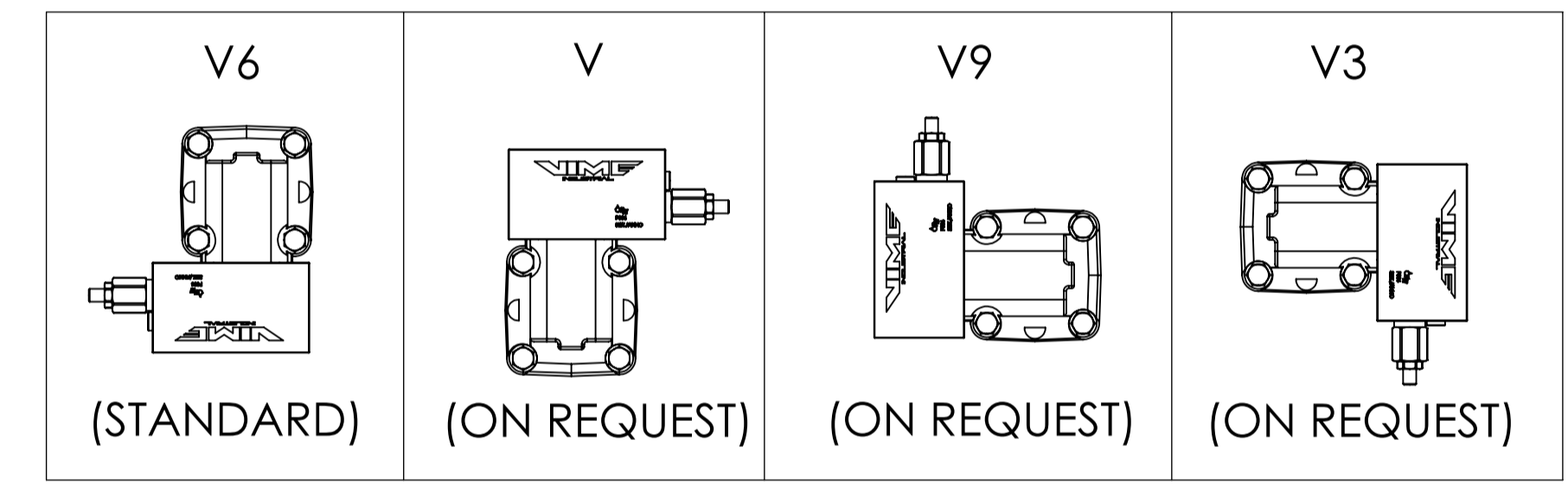


Machinery Directive 2006/42/CE
EN 14492-1



OVERCENTER VALVE POSITION*

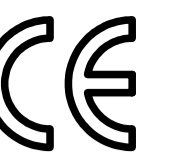


WINCH ORDERING CODE	AIR CLUTCH (STANDARD)	MANUAL CLUTCH (ON REQUEST)	HEAVY DUTY ROLLER FAIRLEAD (ON REQUEST)	CABLE TENSIONER (ON REQUEST)	OVER CENTER VALVE POSITION* (STANDARD V6)
EPHCFN125U20EAV6	X				X
EPHCFN125U20EAPV6	X			X	X
EPHCFN125U20EAGV6	X		X		X
EPHCFN125U20EAGPV6	X		X	X	X
EPHCFN125U20EV6		X			X
EPHCFN125U20EPV6		X		X	X
EPHCFN125U20EGV6		X	X		X
EPHCFN125U20EGPV6		X	X	X	X

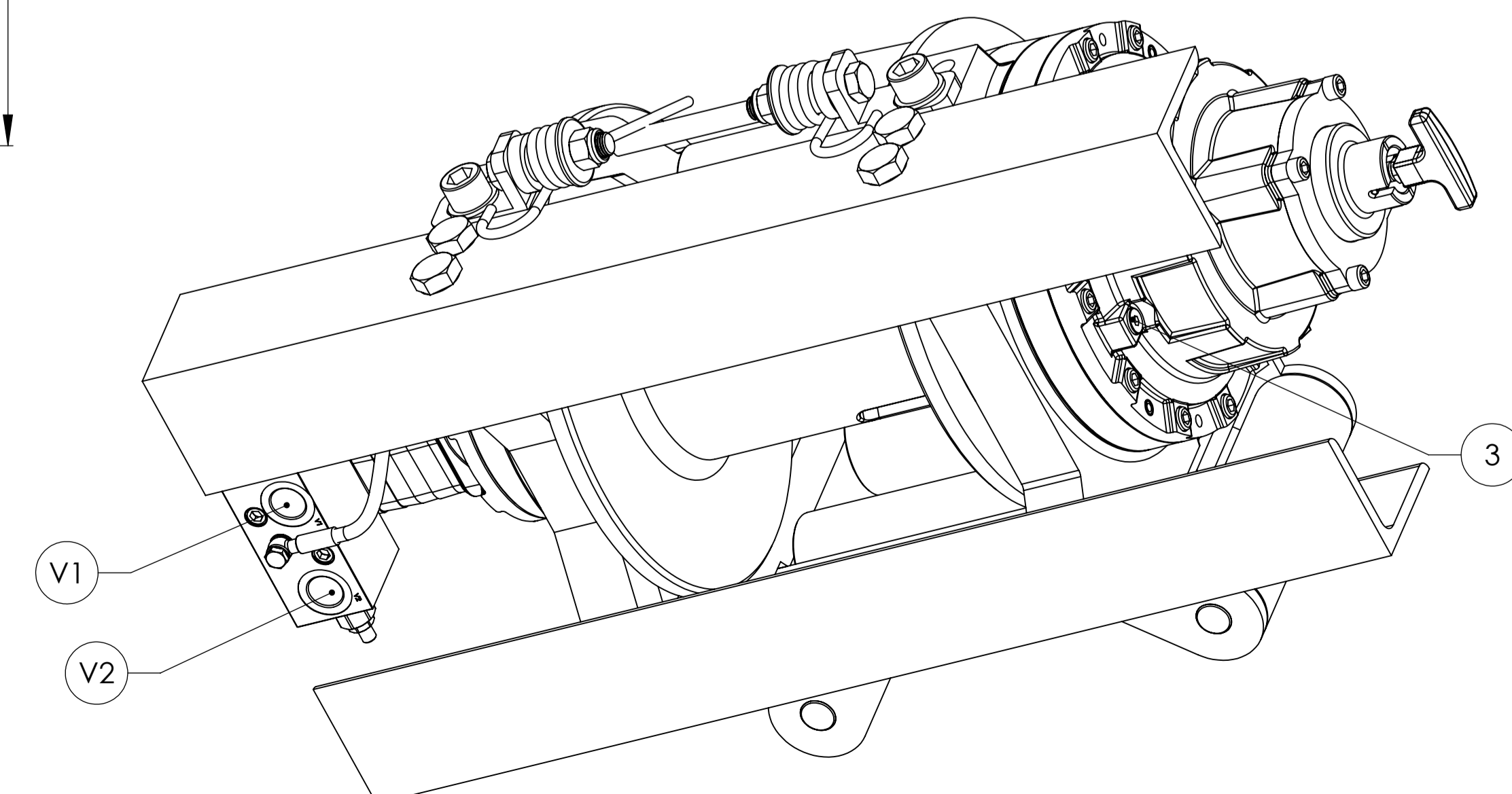
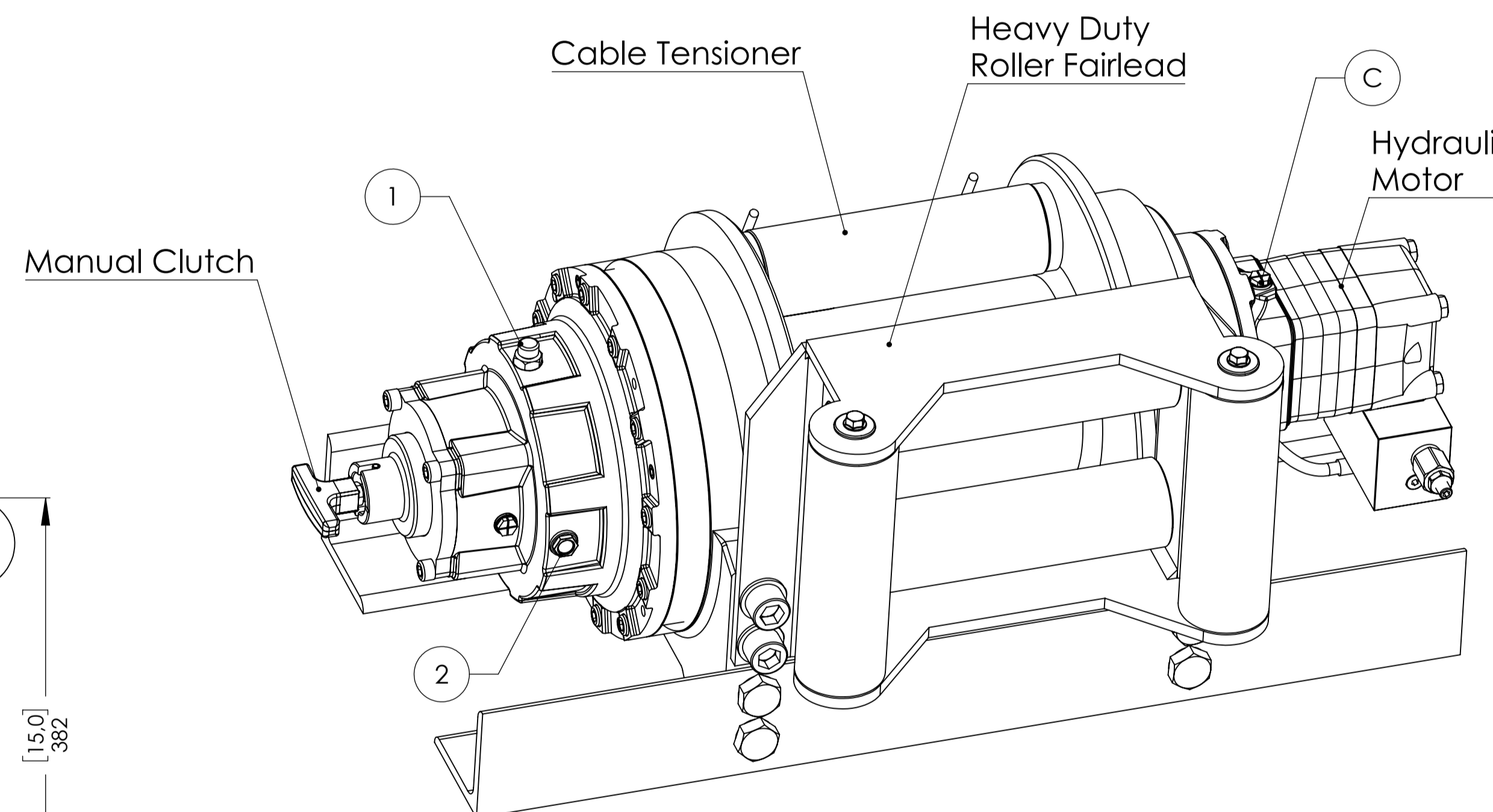
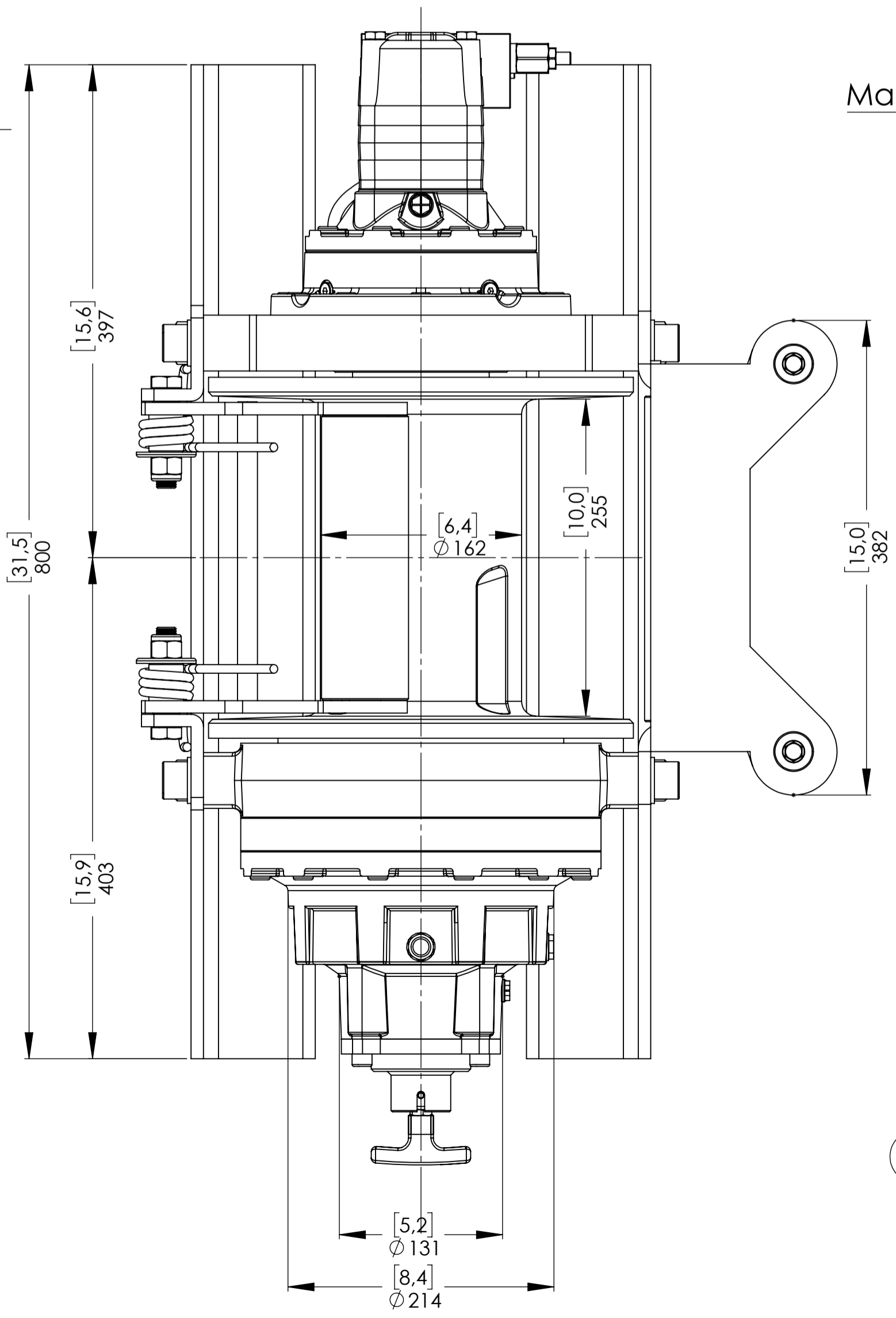
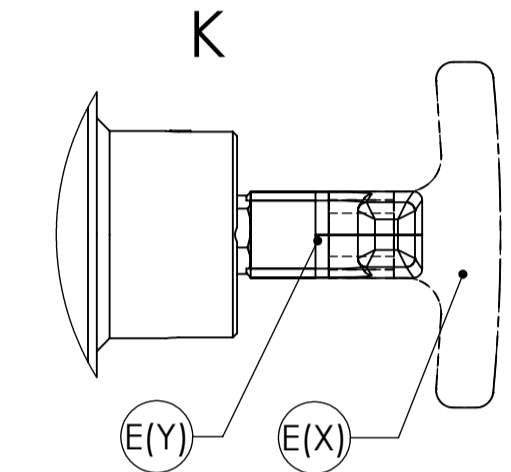
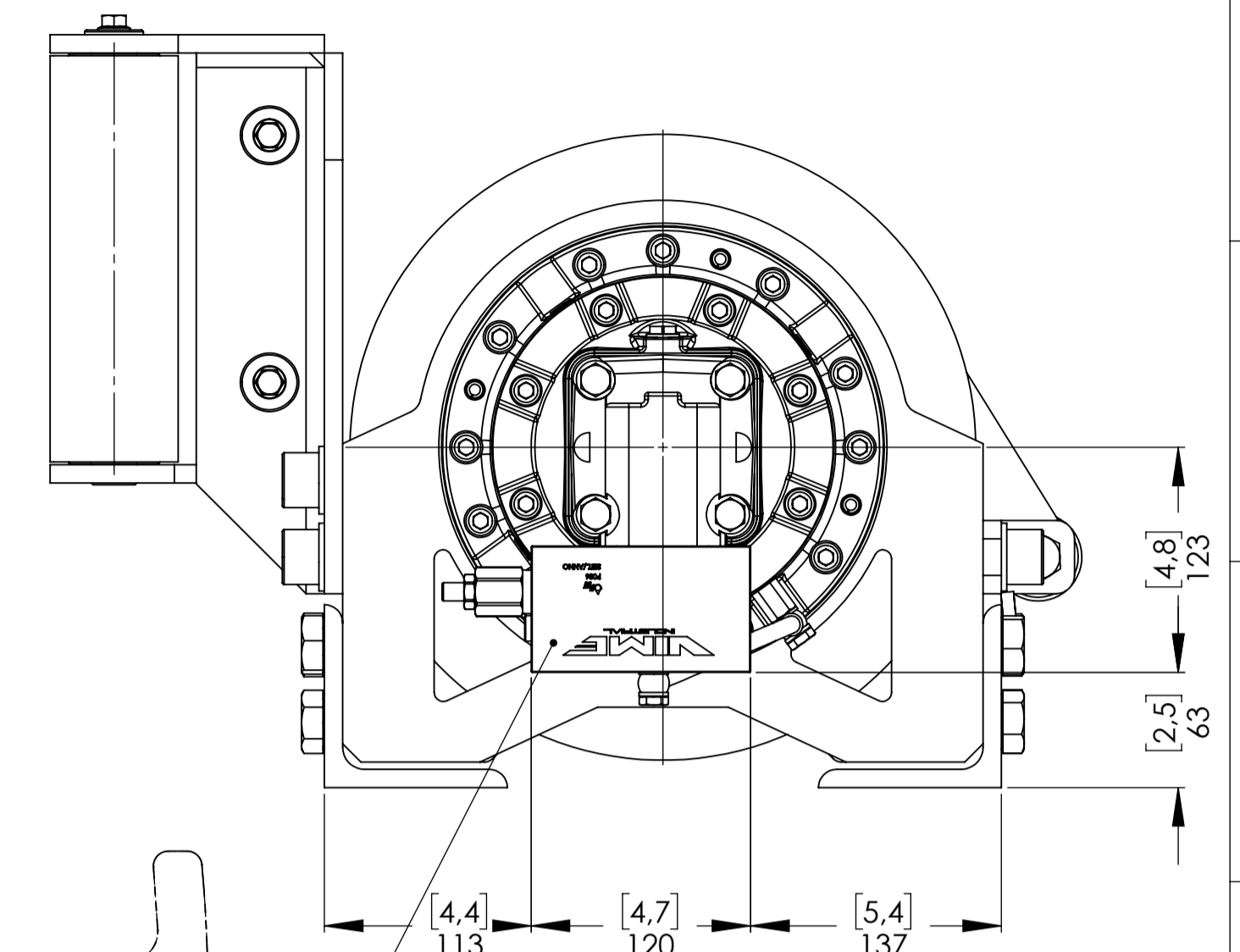
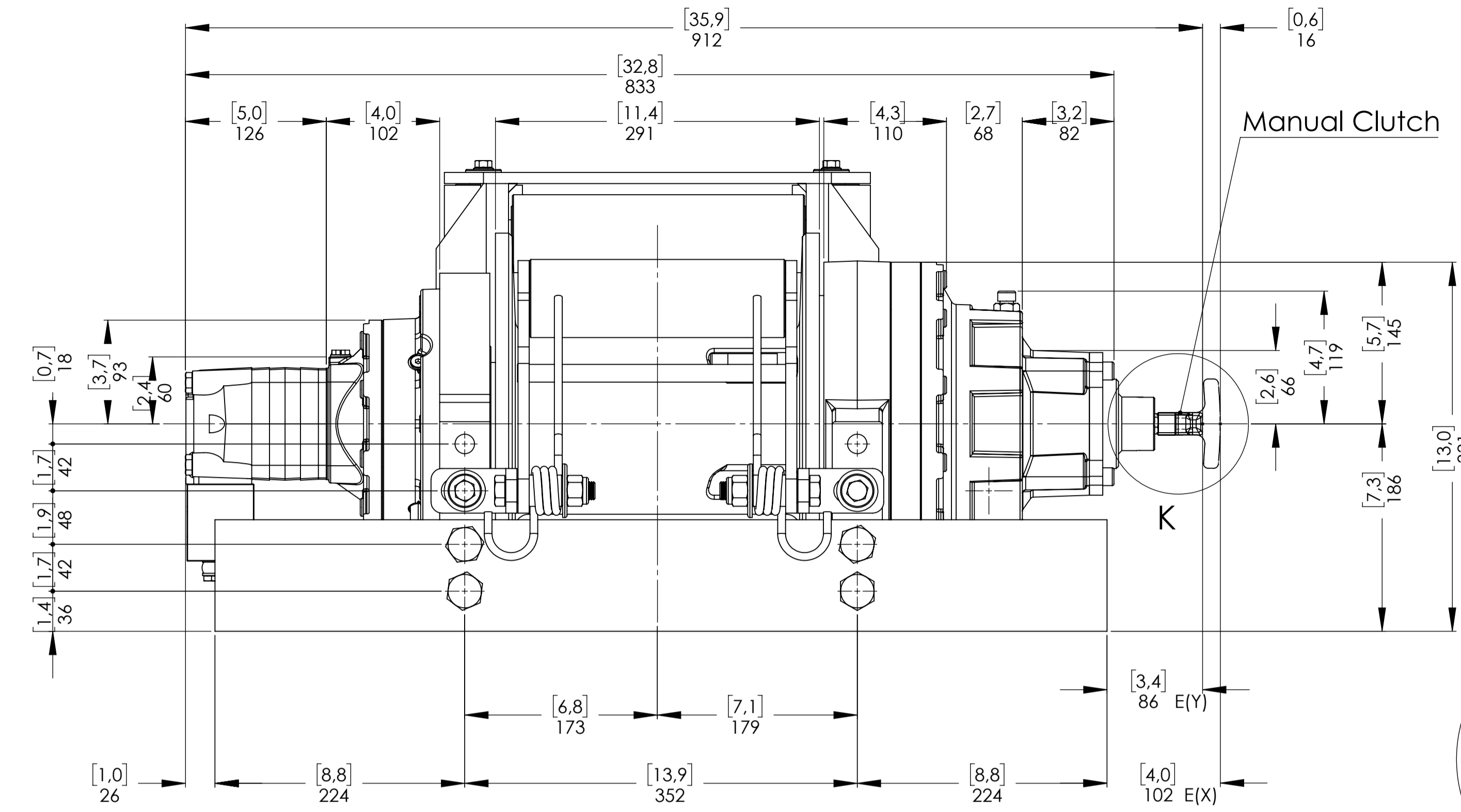
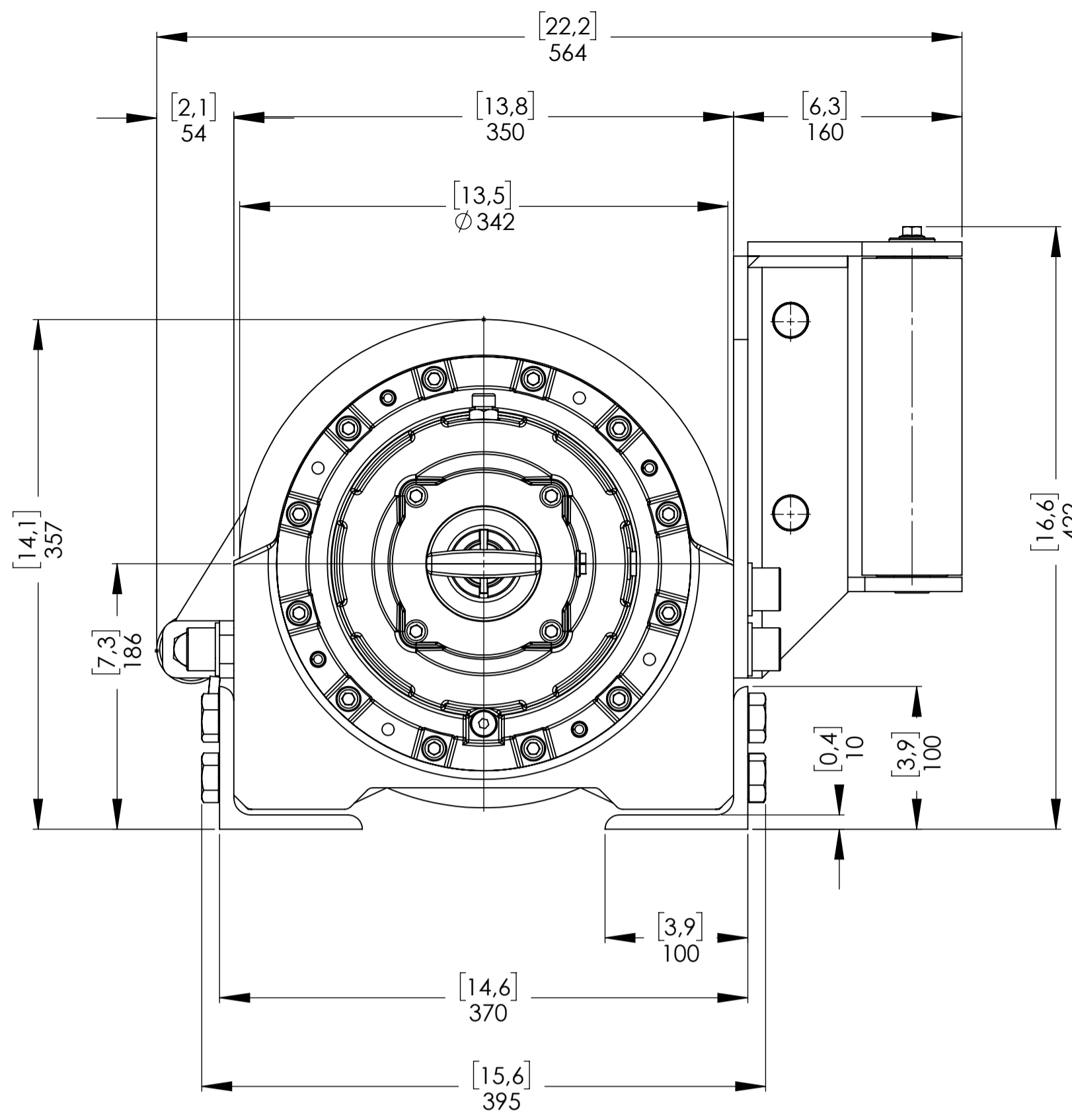
*AT THE MOMENT OF ORDER IS POSSIBLE REQUEST THE OVERCENTER VALVE PORTS ORIENTED ACCORDING TO THE LAYOUT ABOVE. IF NOT SPECIFIED, THE WINCH WILL BE SUPPLIED WITH THE OVERCENTER VALVE PORTS ORIENTED AS PER OUR STANDARD CONFIGURATION V6.

CONNECTIONS	
V1 OUT LET	G 3/4
V2 IN LET	G 3/4
C CASE DRAIN	G 1/4
E (X) DISENGAGED	G 1/8
E (Y) ENGAGED	RETURN SPRING

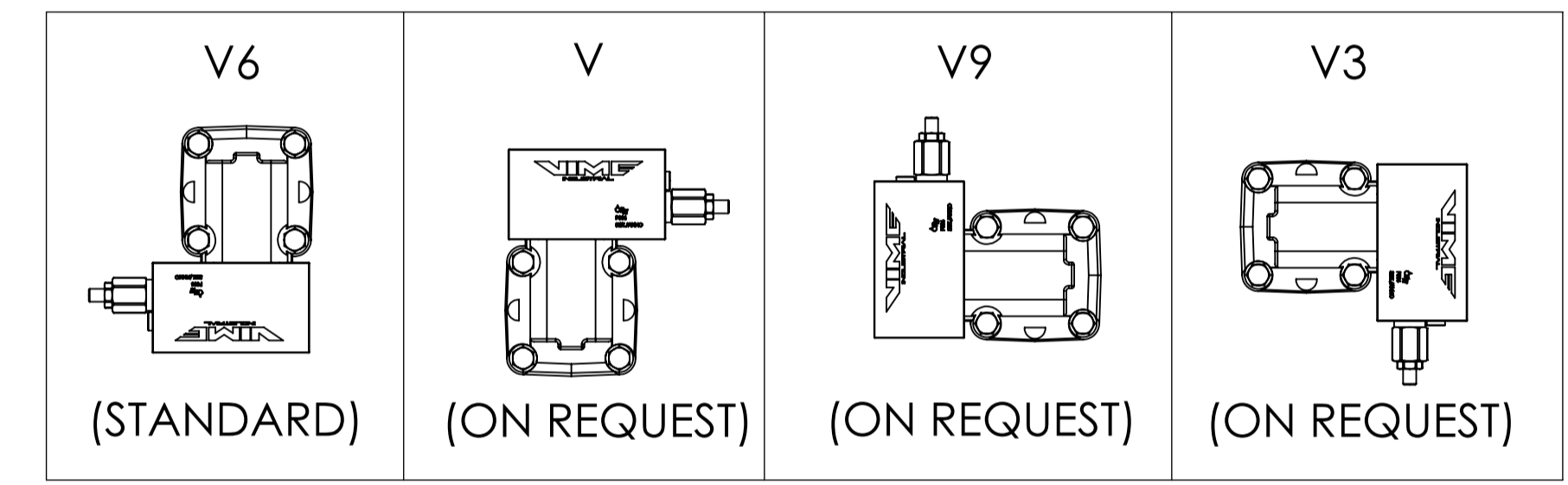
WINCH MODEL	EPHC 125 FN	WINCH GROUP	PLANETARY GEAR	PLUGS
Pulling capacity	12500 Kg	Date	Modification	1.Fill G 3/8
Max.Oil flow	75 Lt./Min.			2.Level G 3/8
Speed Line - first layer	9,2 Mt./Min.			3.Drain G 1/4
Speed Line - top layer	14,5 Mt./Min.	DANGEROUS: Do not use winch to lift support or transport personnel.		SCALE 1:3.5
	Gear ratio	1/22,69		WEIGHTS
	Orbital hydr. motor	200 cc		Winch (without oil) 190 Kg
	Working pressure	200 bar		Heavy-duty Roller fairlead 30 Kg
	Drum size	255 mm		Cable tensioner 8 Kg
	Drum clutch	Air-operated		
 Funo - Bologna (Italy) www.vimeindustrial.com The Quality is Transparent		VIME Industrial reserves the right to improve its products through changes in designed or materials as if may seem desirable without notice.		DATA 19/09/2016 COD. EPHCFN125U20EAGPV6



Machinery Directive 2006/42/CE
EN 14492-1



OVERCENTER VALVE POSITION*



WINCH ORDERING CODE	AIR CLUTCH (STANDARD)	MANUAL CLUTCH (ON REQUEST)	HEAVY DUTY ROLLER FAIRLEAD (ON REQUEST)	CABLE TENSIONER (ON REQUEST)	OVER CENTER VALVE POSITION* (STANDARD V6)
EPHCFN125U20EAV6	X				X
EPHCFN125U20EAPV6	X			X	X
EPHCFN125U20EAGV6	X		X		X
EPHCFN125U20EAGPV6	X		X	X	X
EPHCFN125U20EV6		X			X
EPHCFN125U20EPV6		X		X	X
EPHCFN125U20EGV6		X	X		X
EPHCFN125U20EGPV6		X	X	X	X

*AT THE MOMENT OF ORDER IS POSSIBLE REQUEST THE OVERCENTER VALVE PORTS ORIENTED ACCORDING TO THE LAY OUT ABOVE. IF NOT SPECIFIED, THE WINCH WILL BE SUPPLIED WITH THE OVERCENTER VALVE PORTS ORIENTED AS PER OUR STANDARD CONFIGURATION V6.

CONNECTIONS	
V1 OUT LET	G 3/4
V2 IN LET	G 3/4
C CASE DRAIN	G 1/4
E (X) DISENGAGED	-----
E (Y) ENGAGED	-----

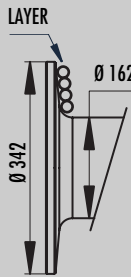
WINCH MODEL	EPHC 125 FN	WINCH GROUP	PLANETARY GEAR	PLUGS
Pulling capacity	12500 Kg	Date	Modification	1.Fill G 3/8
Max.Oil flow	75 Lt./Min.			2.Level G 3/8
Speed Line - first layer	9,2 Mt./Min.			3.Drain G 1/4
Speed Line - top layer	14,5 Mt./Min.	DANGEROUS: Do not use winch to lift support or transport personnel.		SCALE 1:3.5
		Gear ratio	1/22,69	WEIGHTS
Funo - Bologna (Italy) www.vimeindustrial.com		Orbital hydr. motor	200 cc	Winch (without oil) 190 Kg
The Quality is Transparent		Working pressure	200 bar	Heavy-duty Roller fairlead 30 Kg
VIME Industrial reserves the right to improve its products through changes in designed or materials as it may seem desirable without notice.		Drum size	255 mm	Cable tensioner 8 Kg
		Drum clutch	Manual	COD. EPHCFN125U20EGPV6
				DATA 19/09/2016

1.4.13 EPHC 125 FN CE TECHNICAL DATA


FEATURES EPHC 125 FN CE (200 cc.)	
LINE PULL FIRST LAYER	12.500 KGF
LINE SPEED FIRST LAYER	9,2 MT/MIN.
MAX. WORKING PRESSURE	200 BAR
MAX. OIL SUPPLY	75 LT/MIN
MIN. OIL SUPPLY	20 LT/MIN
WIRE ROPE SIZE (EN 14492-1)	*15/18 mm
WIRE ROPE MINIMUM BREAKING ROPE (EN 14492-1)	25.000 KG
MAX. WIRE ROPE CAPACITY (EN 14492-1)	**50/30 MT

LINE SPEED [MT/MIN]							
	OIL SUPPLY [LT/MIN]	DRUM REVOLUTION [RPM]	LINE SPEED PER LAYER [MT/MIN]				
			1	2	3	4	5
ROPE 15 MM	40	8,1	4,5	5,1	5,9	6,7	7,3
	60	12,6	7,1	8,1	9,4	10,6	11,6
	75	16	9,1	10,4	12,0	13,5	15,0
ROPE 18 MM	40	8,1	4,6	5,5	6,4	7,3	8,2
	60	12,6	7,2	8,6	10	11,4	12,8
	75	16	9,2	10,9	12,7	14,5	16,3

WIRE ROPE QUANTITY ON LAYER (DRUM LENGTH EPHC FN= 255 MM)							
LAYER	LAYER	DRUM DIAMETER [MM]		WIRE ROPE ON LAYER [MT]		WIRE ROPE QUANTITY [MT]	
		15 MM	18 MM	15 MM	18 MM	15 MM	18 MM
		6	327	-	16,4	14,9	76
5	297	324	14,9	13,4	59,6	52,1	
4	267	288	13,4	11,9	44,6	38,7	
3	237	252	11,9	10,4	31,2	26,8	
2	207	216	10,4	8,9	19,3	16,4	
1	177	180	8,9	7,4	8,9	7,4	
0	162	162	-	-	-	-	



LINE PULL [KGF]		
RATIO	LAYER	LINE PULL [KGF]
22,69:1	1	12.500
	2	10.680
	3	9.330
	4	8.280
	5	7.440
22,69:1	1	12.500
	2	10.410
	3	8.920
	4	7.810
	5	6.940

NOTE 

Specifications are subject to change without notification and without incurring obligation. Specifications in this publication are theoretical and may vary depending on hydraulic system, environment, etc.

*Wire rope size must be respected. Recommended wire rope min. tensile strength 2160 N/mm². Wire rope minimum breaking load must be at least double of winch max. pulling capacity.

** Max. wire rope capacity according with EN 14492-1.

WEIGHT [KG]	
WINCH (WITHOUT CABLE)	190
ACCESSORY : ROLLERFAIRLEAD	30
ACCESSORY : CABLE TENSIONER	8

1.4.14 EPHC 125 FN CE WINCH PERFORMANCE CHARTS AT THE 1ST LAYER

